



Mental Health and Wellbeing Reform Progress Report 2026





To receive this document in another format email
DSO.MentalHealthWellbeingDivision@health.vic.gov.au

Authorised and published by the Victorian
Government, 1 Treasury Place, Melbourne.

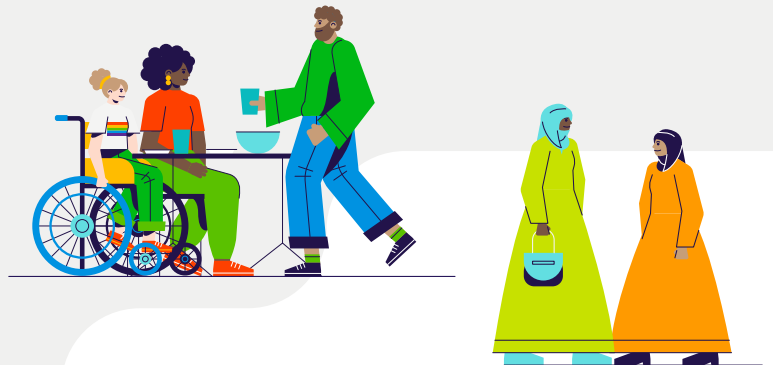
© State of Victoria, Australia, Department of Health,
May 2026.

ISBN 978-1-76131-999-0

Except where otherwise indicated, the images in this document show models and illustrative settings only, and do not necessarily depict actual services, facilities or recipients of services. This document may contain images of deceased Aboriginal and Torres Strait Islander peoples.

Contents

Acknowledgements	4
Minister's Foreword	5
1 About this report	6
2 Where we are now	8
3 Building on our progress	36



Acknowledgements

Acknowledgement of Aboriginal people and communities in Victoria

We proudly acknowledge Aboriginal and Torres Strait Islander people as Australia's First Peoples and the Traditional Owners and custodians of the lands and waters on which we live, learn, work and play. We pay our respects to Elders and leaders, past and present. We recognise the ongoing enrichment that Aboriginal and Torres Strait Islander people, culture and communities bring to the cultural landscape of this state. We acknowledge that sovereignty has never been ceded.

Since time immemorial, Aboriginal and Torres Strait Islander people have practised their lores, customs and languages and nurtured Country through spiritual, material and economic connections to land, water and resources. These connections are central to Aboriginal and Torres Strait Islander social and emotional wellbeing. We know we get better outcomes when Aboriginal and Torres Strait Islander people are making the decisions that affect First Nations communities. Victoria's Treaty process gives us a pathway to give First Peoples a say on the policies that impact First Peoples' lives. We commit to working proactively to support this work in line with the aspirations of Traditional Owners and Aboriginal and Torres Strait Islander people living in Victoria.

We look forward to a time where, through the Treaty process, we have recognised the wrongs of the past, made peace, and can walk together with greater respect, understanding and connection, and fully celebrate the strength, resilience and diversity of First Nations people living in Victoria.



Statement of recognition of lived and living experience of mental illness

The Department of Health recognises the strength of people living with trauma, neurodiversity, mental illness, and substance use or addiction, and their families, carers, and supporters, and remembers those who have been lost to suicide.

We acknowledge the many individuals and organisations who contributed their time, stories, experience, and wisdom to guide and contribute to the reform program and the development of this plan.

We also recognise the continued advocacy of the mental health and wellbeing sector and the Victorian community for improved mental health outcomes, including calling for and contributing to the Royal Commission into Victoria's Mental Health System.

Minister's Foreword



Over the past five years, Victoria's mental health reform journey has been shaped by the experiences and voices of people across the state.

In my time as Minister for Mental Health, I have had the privilege of meeting many Victorians whose stories continue to strengthen and guide this work.

Those conversations have stayed with me because they are a reminder that mental health reform is ultimately about people. It is about creating a system that responds with compassion, dignity and humanity. A system that better supports people to access care earlier, closer to home and in ways that work for them.

Through an investment of more than \$6 billion, more Victorians are able to access free mental health support in their local community without needing a referral. More people are receiving support before reaching crisis point, with expanded community-based services creating new pathways into care outside hospital settings.

Families and carers are increasingly being recognised as partners in recovery. Services are becoming more connected and responsive to people's individual needs and experiences. We are also growing a more diverse workforce to strengthen the system's ability to meet increasing demand for care.

Importantly, this reform journey has also been shaped by stronger collaboration. People with lived experience, services, clinicians, community organisations and government have worked together in new ways to build a more connected and responsive mental health and wellbeing system for Victorians. Improved collaboration across the sector is helping strengthen local pathways into care, improve coordination and better support Victorians to access the care they need.

While there is still more work ahead, this report demonstrates the strong foundations now in place for long-term change. Reform of this scale takes time, persistence and partnership. It requires us to keep listening, learning and adapting as the system continues to evolve.

What gives me confidence for the future is the commitment across the mental health and wellbeing system to continue building on the progress made so far, and ensuring more Victorians can access the support they need.

To everyone who has contributed to this reform journey so far, thank you. Your care, expertise, advocacy and dedication are helping create lasting change for current and future generations of Victorians.

A handwritten signature in black ink, appearing to read 'Ingrid Stitt'.

Ingrid Stitt MP
Minister for Mental Health

1

About this report



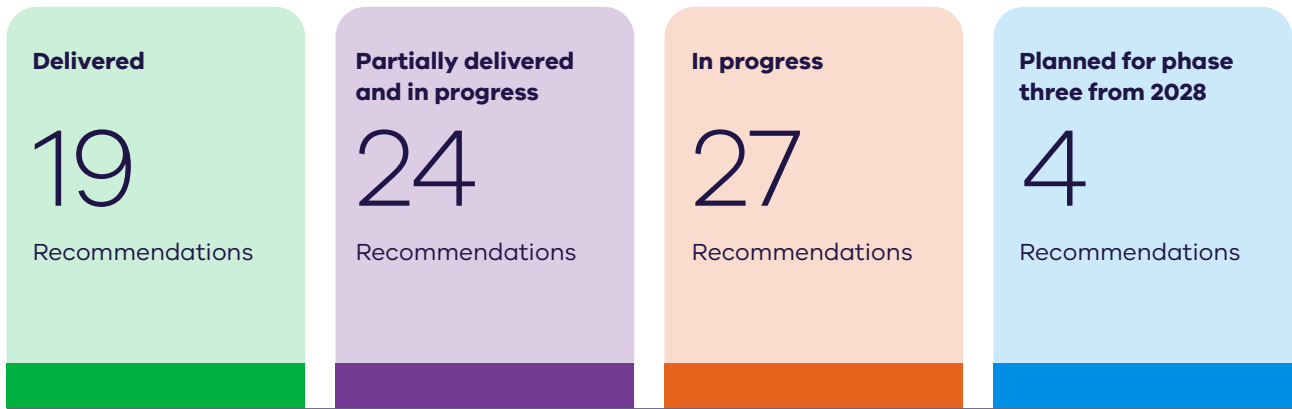
The Royal Commission into Victoria's Mental Health System set in motion one of the most significant reform programs undertaken in Victoria's health system.

Its recommendations were informed by over 12,500 Victorians, including people with lived and living experience, families, carers, clinicians, service providers and community organisations, whose experiences helped shape the direction for reform.

This report tracks progress against the Royal Commission's 74 recommendations. It brings together reform activity across the mental health system, highlighting what has been delivered to date, work currently underway, and areas where reform will continue over time.

The report reflects the Victorian Government's commitment to transparency and accountability throughout Victoria's 10-year mental health reform journey.

Progress at a glance



As of May 2026

Work is underway on

95%

of recommendations

Including

26%

delivered in full.



Understanding the implementation status

Each recommendation includes an implementation status and a summary of the reform activity contributing to progress.

Delivered:

The intent of the recommendation has been met through reform delivered to date.

Partially delivered and in progress:

Some components of the recommendation have been delivered, others remain as in progress, with work underway to deliver the recommendation.

In progress:

Work is underway to deliver this recommendation.

Planned from 2028:

The recommendation is planned to commence in phase three of reform from 2028.

Scope and limitations

This report reflects progress as of May 2026. Reform is ongoing and progress will continue to evolve over time. The report focuses on work led or supported by the Victorian Government and does not capture the breadth of activity across the sector.

To understand how the performance of Victoria's mental health and wellbeing system is measured, refer to the *Mental Health and Wellbeing Outcomes and Performance Framework* (MHWOPF).

2

Where we are now



In 2021, the Royal Commission into Victoria’s Mental Health System set an ambitious 10-year vision to create a compassionate and person-centred mental health system.

Halfway in, we have made meaningful progress.

We are now delivering tangible improvements for Victorians, while recognising that there is always more work to be done.

More people are accessing free mental health and wellbeing support earlier and closer to home, whether through expanded community mental health services, Mental Health and Wellbeing Locals (Local Services), Children’s Health and Wellbeing Locals, Mental Health and Wellbeing Connect Centres, or Youth Prevention and Recovery Care Centres. There are a range of services helping shift the system towards earlier intervention and prevention, making it easier for people to access support before their needs escalate.

This broader shift is also reflected in increased service delivery across the system. Since the Royal Commission, the number of registered consumers of mental health services has increased by 21 per cent. More than 41,000 Victorians have accessed care through 22 Local Services across 24 locations, representing a level of support not previously available within the system. Community mental health service activity grew from 1.312 million hours in 2020-21 to 1.787 million hours in 2024-25 across all age groups – that’s 475,000 additional community mental health service hours - and we’re on track to deliver a further increase by the end of 2025-26.

At the same time, care is becoming more connected. Greater coordination between providers is improving continuity of care and reducing fragmentation across the system. Initiatives such as the Women’s Recovery Network are contributing to more tailored and trauma-informed responses, providing gender-safe inpatient care to more than 750 women each year.

Mental health and wellbeing is now a shared priority across the Victorian Government, with reform extending beyond the health system into schools, workplaces and communities. Initiatives such as the Mental Health in Primary Schools program embed early intervention within education settings, while the *Mentally Healthy Workplaces Framework* supports organisations to prevent psychological harm through better leadership, culture and risk management. This is backed by targeted investment in high-risk industries through WorkSafe programs.

We have continued to grow and diversify the workforce while embedding lived and living experience across the system. The lived and living experience workforce has grown by 125 per cent and the broader public mental health workforce has grown by 33 per cent since 2021. Programs such as the Aboriginal Social and Emotional Wellbeing Scholarship Program are also contributing to a more culturally capable workforce.

Reform continues to be driven by partnership. Aboriginal community-controlled organisations and communities are leading the design and delivery of culturally responsive approaches to social and emotional wellbeing. More broadly, services are increasingly working in partnership with the communities they support.

This progress has occurred in a context of sustained and increasing demand, influenced by the impacts of the COVID-19 pandemic, natural disasters, and broader social and economic pressures.

While challenges remain, the foundations for long-term reform are now established. Victoria’s mental health and wellbeing system is becoming more accessible, more connected, and more community-based.

As reform continues, the focus will be on building on this progress to deliver a system that supports all Victorians to access care when and where they need it.



Progress update on the Royal Commission recommendations

The following section provides an update on progress against each recommendation of the *Royal Commission into Victoria's Mental Health System*. Each recommendation includes a summary of activity contributing to implementation progress.

Recommendation 1:

Supporting good mental health and wellbeing

What progress has looked like

The *Mental Health and Wellbeing Outcomes and Performance Framework (MHWOPF)* was released in December 2024, outlining a new approach to measuring performance for the mental health and wellbeing system. An accompanying implementation plan is guiding the first phase of action for government and oversight entities.

Partially delivered and in progress

Recommendation 2:

Governance arrangements for promoting good mental health and preventing mental illness

What progress has looked like

Wellbeing Promotion Office was established within the Department of Health in 2022 to address the governance requirements in this recommendation.

Wellbeing in Victoria: a strategy to promote good mental health and wellbeing 2025-2035, along with the *Wellbeing Action Plan for 2025-27* provide the foundation and strategic direction for the Wellbeing Promotion Office to develop and coordinate a statewide approach to promoting good mental health and wellbeing.

The Wellbeing Promotion Office is focused on strengthening cross-sector leadership, building workforce capability, and supporting community-led wellbeing initiatives.

Delivered

Recommendation 3:

Establishing a responsive and integrated mental health and wellbeing system

What progress has looked like

22 Local Services are now operating in 24 locations across Victoria. As of 31 March 2026, more than 41,000 people have received care and support.

All 15 Infant, Child and Youth Area Mental Health and Wellbeing Services (ICY AMHWS) are delivering treatment and support to children and young people aged 0–25 across the state.

Local Health Service Networks (LHSNs) were established in July 2025 and are responsible for supporting collaborative care for their community, as close to home as possible. LHSNs have commenced clinical service planning, including hospital based mental health and wellbeing services to improve access and support an integrated consumer journey for those who experience mental ill-health.

In progress

Recommendation 4:

Towards integrated regional governance

What progress has looked like

Interim Regional Bodies (IRB), established in 2022, provided advice on regional mental health needs, with final reports delivered in 2024.

Their findings are guiding the work of Victoria's LHSNs. Each Network is developing *Regional Mental Health and Wellbeing Collaboration Plans*, shaped by IRB findings and ongoing engagement with local communities and sector partners.

Partially delivered and in progress

Recommendation 5:**Core functions of community mental health and wellbeing services****What progress has looked like**

Local Services are delivering the core functions of community mental health and wellbeing services, providing flexible options to access care and respond to the needs of local communities.

Work is progressing to develop a strategy to redesign community-based care, currently delivered by Area Mental Health and Wellbeing Services (AMHWS) and NGOs. This includes the development of a service framework, supported by an Expert Advisory Group that was appointed in early 2025 to guide the design process.

In progress**Recommendation 7:****Identifying needs and providing initial support in mental health and wellbeing services****What progress has looked like**

Access and Intake policy and guidelines have been developed after extensive consultation. Work is now underway to finalise and implement them to support a more connected mental health and wellbeing system.

The service framework for Local Services informed the work to develop the draft access and intake policy. This includes reference to needs identification and initial support functions, delivered within a 'how can we help' philosophy.

In progress**Recommendation 6:****Helping people find and access treatment, care and support****What progress has looked like**

All Local Services have clear referral pathways in place with local GPs, other service providers, and AMHWS, making it easier for people to move between services and get the support they need.

To provide up-to-date information about Victoria's mental health and wellbeing system, a new website concept has been co-designed.

Partially delivered and in progress**Recommendation 8:****Responding to mental health crises****What progress has looked like**

Eight Mental Health and Alcohol and Other Drugs Emergency Department Hubs (MHAOD ED Hubs) are operating across Victoria, allowing specialist, dedicated care within emergency departments, while easing pressure on existing resources. The Hubs are located at Monash Medical Centre, St Vincent's Hospital, Sunshine Hospital, Royal Melbourne Hospital, University Hospital Geelong, Latrobe Regional Hospital, New Footscray Hospital and Peninsula University Hospital. Additional MHAOD ED Hubs are in the planning stage.

Two enhanced metropolitan crisis outreach services will commence in 2026-27.

Updated guidance to the sector has been published on the operation of the MHAOD ED Hubs.

In progress

Recommendation 9:

Developing 'safe spaces' and crisis respite facilities

What progress has looked like

Work is underway to build a connected system of mental health crisis supports. This includes designing Safe Spaces where people can get help during times of distress, as an alternative to going to an emergency department. These services are being designed to reflect the Royal Commission's vision for peer-led care, with people with lived experience playing a central role in support and recovery.

In progress

Recommendation 11:

New models of care for bed-based services

What progress has looked like

Victoria's first *Statewide Mental Health and Wellbeing Service and Capital Plan* was released in October 2024. It provides an evidence base to guide the planning of future services, including hospital-based mental health services using projections of service demand, based on population needs, growth and demographics.

New acute mental health beds have been delivered, including Hospital in the Home (HITH) beds as part of the response to the Royal Commission's interim report. New beds are located at Barwon, Northern, Western and Melbourne Health, Parkville Youth Mental Health and Wellbeing Services (PYMHWS), and the Women's Recovery Network (Alfred, Goulburn Valley, Ramsay Health).

In progress

Recommendation 10:

Supporting responses from emergency services to mental health crises

What progress has looked like

The *Mental Health and Wellbeing Act 2022* introduced new guiding principles for emergency responders to support a least restrictive, health-led response to mental health crises. Since the Act commenced, reform has progressed in phases, with current work focused on system improvements to support greater health-led responses.

We have worked closely with Ambulance Victoria and Victoria Police to develop new protocols when supporting people experiencing mental health crises. The protocols clarify the roles, responsibilities and procedures for police, paramedics and mental health clinicians. This enables for future implementation of a health-led response by paramedics, including transport to designated mental health services, ensuring

individuals in crisis receive support from health clinicians rather than primarily police.

While this longer term reform work continues, the TelePROMPT service delivered by Eastern Health connects paramedics with specialist mental health clinicians in real time, supporting better assessment of people who are experiencing a mental health crisis.

Data sharing arrangements between Ambulance Victoria, Victoria Police and Triple Zero Victoria have been established to allow for better understanding of how often mental health crises occur and how emergency services respond. This data provides a clear starting point to track progress and measure improvements over time.

In progress

Recommendation 12:**Developing new bed-based rehabilitation services****What progress has looked like**

Recommendation 12 is planned to begin in the third phase of the reform.

Planned for phase three from 2028

Recommendation 14:**Supporting mental health consultation liaison services****What progress has looked like**

A new Performance Monitoring Framework, introduced on 1 July 2024, has strengthened accountability for hospital-based mental health services, including consultation liaison. Changes to national activity-based funding classifications in September 2023 ensure consultation liaison services are consistently recorded, monitored and funded across the system.

Delivered

Recommendation 13:**Addressing gender-based violence in mental health facilities****What progress has looked like**

The Pathway to Mental Health Beds program was completed in January 2024, delivering 120 new mental health beds across McKellar Centre (Geelong), Sunshine, Northern and Royal Melbourne hospitals. These facilities incorporate contemporary design to support gender-sensitive care.

Safer Care Victoria is delivering its Improving Sexual Safety initiative across five health services, trialling targeted changes to strengthen sexual safety for consumers, carers, families and workforce.

Funding was allocated to deliver capital works to improve the safety of vulnerable consumers, including gender-based separation, in Intensive Care Areas (ICAs). 24 ICAs across the state are being upgraded, of which 21 are complete, and 3 projects are in delivery.

The Office of the Chief Psychiatrist has updated its sexual safety guideline, *Improving sexual safety in mental health and wellbeing services*.

In progress

Recommendation 15:**Supporting good mental health and wellbeing in local communities****What progress has looked like**

10 Social Inclusion Action Groups operate across Victoria to strengthen community connection and participation.

Between 2022 and 2025, social prescribing trials delivered through Local Services supported more than 3,200 people experiencing loneliness and social isolation.

Resources have also been developed to help mental health and wellbeing services introduce or strengthen social prescribing practices, supporting people to build confidence and engage in community-based activities.

Social connection and social prescribing are increasingly being embedded into the delivery of mental health care across the reformed system.

In progress

Recommendation 16:

Establishing mentally healthy workplaces

What progress has looked like

The *Victorian Mentally Healthy Workplaces Framework* and *WorkWell Mental Health Industry Trials* have been implemented to reduce mental health harm and strengthen psychological health and safety across Victorian workplaces.

The Mental Health Improvement Fund (MHIF) has also been established to support mentally healthy workplaces.

Partially delivered and in progress

Recommendation 17:

Supporting social and emotional wellbeing in schools

What progress has looked like

Delivered by the Department of Education, the Schools Mental Health Fund and Menu provide Victorian government schools with access to evidence-based mental health programs and supports.

The Mental Health in Primary Schools initiative has been rolled out to more than 1,000 schools, enabling the employment of Mental Health and Wellbeing Leaders and strengthening whole-school approaches to student wellbeing.

More than 95 per cent of participating schools report increased capacity to support student mental health.

Delivered

Recommendation 18:

Supporting the mental health and wellbeing of prospective and new parents

What progress has looked like

The Perinatal Emotional Health Program has been expanded to support women's mental health from the time of pregnancy until their baby turns one.

Offering assessment, treatment, and referral pathways, the program now supports more prospective and new parents in the community, improving access to early intervention and specialist treatment for antenatal and postnatal mental health presentations.

Investments have been made to strengthen specialist perinatal mental health capability and deliver more early intervention care and support to new and expectant parents.

St Vincent's Hospital and Bayside Health deliver dedicated Perinatal Emotional Health Programs, increasing the availability of specialist perinatal mental health services within the public system.

An Expert Advisory Group (EAG) was established to inform the development of improved perinatal mental health screening guidelines, with work continuing to support implementation.

In progress



Reommendation 19:**Supporting infant, child and family mental health and wellbeing****What progress has looked like**

ICY AMHWS are transitioning to new agebased service streams to ensure infants, children, young people, and their families receive care that is right for their stage of development. The full transition to the 0–11 and 12–25 age groups is expected to be completed by the end of 2026.

Three Children’s Mental Health and Wellbeing Locals are operating in Sunshine, Bendigo and Cranbourne, providing integrated care for children aged 0–11 and their families in their local communities. They are delivered through partnerships between community health services, local mental health services, and family support providers.

Every regional Infant, Child and Youth mental health service is delivering Group-based Parenting programs to support families.

The first residential family admissions centre, Booboop Narrkwarren Nagarra-jarranoun (The Family Healing Centre), at Austin Hospital is operational, providing specialised acute mental health care for children up to 11 years old with severe or complex needs, while supporting their families as part of treatment.

Partially delivered and in progress**Recommendation 20:****Supporting the mental health and wellbeing of young people****What progress has looked like**

ICY AMHWS are transitioning to new age streams to ensure infants, children and their families are receiving developmentally appropriate treatment, care and support by the end of 2026.

The Intensive Mobile Youth Outreach Service has expanded to more locations across Victoria, providing specialised outreach support for young people with complex needs. The service supports young people who may struggle to attend clinic-based appointments by delivering treatment, care and support in places they feel most comfortable, including at home, in their local community or nearby public spaces.

We are improving integration between headspace services (Level 4) and ICY AMHWS (Level 5), including the development of Guideline for Enhancing and Integrating Youth Mental Health and Wellbeing in Victoria. This is a joint commitment from the Victorian Government and the Commonwealth Government for a more consistent, integrated youth mental health system. It will set expectations for stronger partnerships, clearer referral pathways, and the importance of clinical in-reach and shared-care arrangements between headspace and ICY AMHWS.

PYMHWS was established in July 2025 as a new health service to deliver bed based and community mental health care for young people in Northwest Metropolitan Melbourne.

In progress

Recommendation 21:

Redesigning bed-based services for young people

What progress has looked like

To support youth mental health, construction of new Youth Prevention and Recovery Care (YPARC) centres has been completed at four out of five locations in Shepparton, Geelong, Heidelberg and Traralgon, with Ballarat due for completion in June 2026. The Heidelberg and Traralgon YPARCS are now operational, with the remaining three due to open in mid-2026.

Three YPARCS in Bendigo, Dandenong and Frankston have been upgraded and the Parkville YPARC opened in 2022.

From 2026–27, every region will have a YPARC service operating.

PYMHWS delivers an innovative 10 HITH beds.

We are planning a new stream of youth inpatient beds and have worked closely with people with lived experience and the sector to develop a new statewide framework. This will guide care for youth and adolescent inpatient beds.

Partially delivered and in progress

Recommendation 23:

Establishing a new Statewide Trauma Service

What progress has looked like

A consortium of organisations with expertise in trauma, alongside people with lived and living experience, was established to design a new approach to trauma care.

The consortium finalised an operating model for Transforming Trauma Victoria based on co-design and consultation with people with lived and living experience of trauma, AMHWS, non-government organisations and Aboriginal Community Controlled Health Organisations.

In progress

Recommendation 22:

Supporting the mental health and wellbeing of older Victorians

What progress has looked like

Recommendation 22 is planned to begin in the third phase of the reform.

Planned for phase three from 2028

Recommendation 24:

A new approach to addressing trauma

What progress has looked like

The implementation of recommendation 24 is planned for Phase three and is linked to the establishment of the Statewide Trauma Service (Recommendation 23).

Planned for phase three from 2028

Recommendation 25:**Supported housing for adults and young people living with mental illness****What progress has looked like**

The Victorian Government is delivering 505 purpose-built homes across Victoria for adults living with mental health challenges. These homes are co-designed by people with lived experience of mental ill-health to ensure they are safe, supportive and responsive to residents' needs. People supported through this program are connected with a range of dedicated supports including through Area Mental Health and Wellbeing Services, the Early Intervention Psychosocial Support Response or the National Disability Insurance Scheme.

Partially delivered and in progress**Recommendation 26:****Governance arrangements for suicide prevention and response efforts****What progress has looked like**

The Suicide Prevention and Response Office, established within the Department of Health in 2022, leads Victoria's coordinated approach to suicide prevention and response. It is headed by the State Suicide Prevention and Response Adviser and employs people with lived and living experience of suicide in designated roles.

The *Victorian suicide prevention and response strategy 2024–2034* was launched on World Suicide Prevention Day (10 September) in 2024. Co-designed with people with lived and living experience of suicide, the strategy outlines a 10-year vision for a systems-based, whole-of-government and community-wide approach.

Delivered**Recommendation 27:****Facilitating suicide prevention and response initiatives****What progress has looked like**

Collaborated with Impact Co and community members to co-design a new LGBTIQ+ aftercare model to support people after a suicide attempt, planning or intent, and/or self-harm. To provide interim support, funding has been provided to Mind Australia to continue delivery of their LGBTIQ+ aftercare service.

Delivered in partnership with the Commonwealth Government, statewide postvention support continues through the StandBy Support After Suicide program.

Also delivered in partnership with the Commonwealth Government, the Distress Support Service trial was launched in Darebin and Greater Shepparton in September 2025. It provides short-term, community based support for people experiencing distress.

In addition, Safer Care Victoria has worked with 18 mental health services to review and strengthen their alignment with the Zero Suicide Framework, supporting safer, more consistent suicide prevention practices across the system.

**Partially delivered and in progress**

Recommendation 28:

Developing system-wide roles for the full and effective participation of people with lived experience of mental illness or psychological distress

What progress has looked like

The number of lived experience roles for families and carers has grown, with a significant increase in dedicated positions across the mental health and wellbeing system.

Senior lived experience roles are embedded across the mental health and wellbeing system, including the Department of Health, Mental Health and Wellbeing Commission, Victorian Collaborative Centre for Mental Health and Wellbeing (Collaborative Centre), AMHWS, Non-Governmental Organisations and Forensicare.

A 10-year Lived and Living Experience (LLE) Leadership Framework is being developed in partnership with LLE organisations. Informed by lived experience-led research and consultation, it will set out the Victorian Government's longterm vision for lived experience leadership, workforce development, and partnerships across public mental health and AOD services. It is informed by lived experience-led research and consultation and is expected to be finalised in 2026.

Partially delivered and in progress

Recommendation 29:

A new agency led by people with lived experience of mental illness or psychological distress

What progress has looked like

Early development work for the new agency is underway, led by a partnership between the Victorian Mental Illness Awareness Council, the Self Help Addiction Resource Centre, and the Department of Health. Purpose and core functions of the new agency have been defined to ensure it will be grounded in lived experience and well placed to support future mental health reforms.

In progress

Recommendation 30:

Developing system-wide involvement of family members and carers

What progress has looked like

Lived experience roles for families and carers have been expanded across Area Mental Health Services, Local Services, Connect Centres, and Community Mental Health Services, strengthening lived experience involvement throughout the system. Consumer and carer rights have been enshrined into the law through the Mental Health and Wellbeing Act 2022.

This work has laid the groundwork for the Lived and Living Experience Leadership Framework, which will guide consistent, systemwide leadership and involvement.

Partially delivered and in progress

Recommendation 31:**Supporting families, carers and supporters****What progress has looked like**

Eight Mental Health and Wellbeing Connect Centres are operational across Victoria. As a first-of-its-kind service, it offers free services to those who are supporting people living with mental health and substance use challenges or psychological distress. There is a significant peer workforce of lived experience family carers employed across the Connect Centres.

The *Changing Lives report* was delivered in 2025 by the Family and Carer Research Advocacy Network highlighting the value and impact of the lived and living experience workforce.

The co-design of a new statewide peer callback model of care has also been completed, marking an important step toward improved support for families, carers, supporters of suicide attempt survivors, those experiencing suicidal distress, and people bereaved by suicide.

Partially delivered and in progress**Recommendation 32:****Supporting young carers****What progress has looked like**

The Satellite Foundation has expanded supports for young carers and children across Victoria, with an evaluation demonstrating increasing demand, participation and positive outcomes for young carers.

Work to strengthen identification and referral pathways for young carers through the education system has been delivered by the Department of Education.

Partially delivered and in progress**Recommendation 33:****Supporting Aboriginal social and emotional wellbeing****What progress has looked like**

The Balit Durn Durn Centre of Excellence in Aboriginal Social and Emotional Wellbeing completed an Aboriginalled codesign process in 2024–25 for two major initiatives:

- Healing Centres, supporting Aboriginal individuals, families, and communities to access culturally safe healing
- The Nest, a new model to support Aboriginal children who need intensive social and emotional wellbeing support.

Funding to pilot The Nest has been provided to ensure Aboriginal children (aged 0-11) and their families receive integrated and culturally safe care.

Ongoing funding has been provided for 10 Koori Mental Health Liaison Officer (KMHLO) roles within infant, child and youth mental health and wellbeing services across Victoria. These roles strengthen culturally safe care, support shared care, and improve coordination between mainstream services and Aboriginal communitycontrolled health organisations, complementing the 11 existing adult KMHLO roles.

Aboriginal community controlled health organisations have been funded to access specialist primary and secondary mental health consultations, enabling specialists to work alongside local Aboriginal social and emotional wellbeing teams.

Shared care partnerships between Aboriginal community controlled organisations and mainstream services have been established, helping young people transition more smoothly to and from acute mental health services when needed.

Partially delivered and in progress

Recommendation 34:

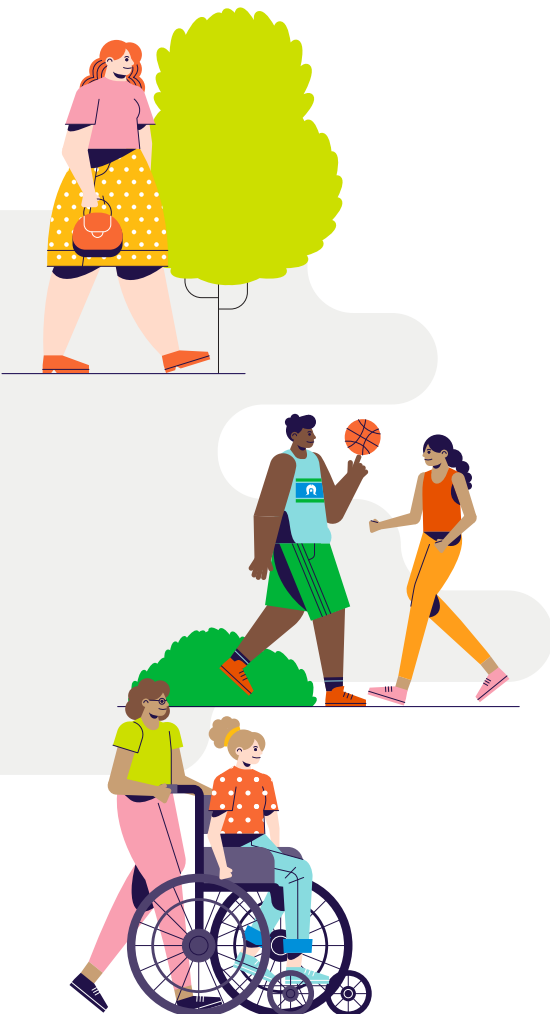
Working in partnership with and improving accessibility for diverse communities

What progress has looked like

The *Diverse Communities Mental Health and Wellbeing Framework* was released in October 2025. Delivery of the 10-year framework (2025-2035) is supported by a series of rolling action plans. The first of these extends from 2025-2028 and is guiding implementation.

Over 40 grants were provided to community-led organisations over the four years of the *Diverse Communities Grants Program* (2022-2025), enabling them to support the mental health and wellbeing of their communities and ensure the mental health and wellbeing system better supports the needs of diverse communities.

Partially delivered and in progress



Recommendation 35:

Improving outcomes for people living with mental illness and substance use or addiction

What progress has looked like

Health services expanded access to specialist AOD clinicians within community mental health teams, including in-reach to hospitals in 2024-25.

The Victorian Government has set a clear expectation that people with co-occurring mental health and alcohol and other drug (AOD) needs receive integrated treatment and care.

Working closely with people with lived and living experience, their families and supporters, service providers, and workforce, we have developed new [guidance](#) to improve care for people who experience both mental illness and substance use or addiction. The guidance sets out a clear, shared approach for mental health and AOD services across Victoria. It includes clear expectations for service providers based on four key principles, to help ensure people receive coordinated, integrated, and person-centred treatment, care, and support that meets their full range of needs.

This expectation is reinforced through the *Victorian Alcohol and Other Drugs Strategy 2025-35*, reform funding and commissioning settings.

Together, these settings establish integrated care as a funded and expected mode of practice, with implications for performance, access, and system stewardship where integration is not effectively delivered.

MHAOD ED Hubs continue to streamline access to specialist care for people presenting with co-occurring mental health and AOD needs, reducing pressure on existing resources (refer to Recommendation 8).

In progress

Recommendation 36:**A new statewide service for people living with mental illness and substance use or addiction****What progress has looked like**

Established the [Hamilton Centre](#) as a statewide network that brings mental health and AOD care together for people with co-occurring needs. The network provides specialist advice to services, supports integrated care, delivers workforce training, and builds specialist capability across Victoria. It has received more than 4,500 referrals since opening.

Operated by Turning Point, the Hamilton Centre delivers translational research and workforce development and leads the operation of the network.

Investments continue to grow Victoria's addiction specialist workforce by funding training positions, including increasing addiction medicine trainee places through the 2026 Victorian Medical Specialist Training Program.

As described in Recommendation 35, we have undertaken work to strengthen access to integrated mental health and addiction support, helping reduce fragmented care, support earlier intervention, and address long emergency department stays for people with complex needs.

**Partially delivered and in progress****Recommendation 37:****Supporting the mental health and wellbeing of people in contact with, or at risk of coming into contact with, the criminal and youth justice systems****What progress has looked like**

Eight new Regional Forensic Mental Health Service teams are in operation, improving access to specialist care for people with complex mental health and forensic needs.

Youth justice custodial mental health services are being expanded to improve support for young people with complex mental health needs in custody. This includes strengthening Parkville Youth Mental Health and Wellbeing Service's (PYMHWS) specialist youth forensic mental health service at the Parkville and Malmsbury Youth Justice Precincts. PYMHWS is also leading the development of a service plan to ensure young people receive safe, high quality, specialist mental health care while in custody.

The [Assessment and Referral Court \(ARC\)](#) is now available at 11 Magistrates' Courts, with plans to expand to two additional headquarter courts by 2027. This expansion will exceed the Royal Commission's recommendation of 12, further strengthening access to therapeutic court pathways across the state.

A new section for Secondary Mental Health Services (Part C) was added to the [Healthcare Services Quality Framework for Victorian Prisons](#). This enables the transition from custodial mental health services to the mainstream mental health and wellbeing system following release.

The approach includes early transition planning, referral to ongoing treatment and support, and handover to receiving health services.

Partially delivered and in progress

Recommendation 38:

Providing safe and appropriate mental health treatment, care and support at Thomas Embling Hospital

What progress has looked like

Significant progress has been made on the expansion of Thomas Embling Hospital. Major construction for stage one is complete, including a dedicated 34-bed women's precinct, a 48-bed medium-security men's facility and new administration facilities. Stage two is also complete, delivering a new entry complex and purpose-built woodwork, horticulture and maintenance building.

Construction has commenced on a new multi-deck carpark.

Operational funding has been secured for a phased opening of the first 40 beds.

In progress

Recommendation 40:

Providing incentives for the mental health and wellbeing workforce in rural and regional areas

What progress has looked like

The [Regional Mental Health Workforce Incentives Program](#) supported more than 300 workers to move to regional Victoria to work in AMHWS, Local Services, and community organisations.

The program also employed local community navigators across the state to support workers before commencement, during relocation, and as they settle into their communities. Together with other workforce initiatives, these efforts have strengthened the regional mental health workforce, which has grown by 25% since 2021. This has helped to address critical service gaps across regional Victoria.

Delivered

Recommendation 39:

Supporting the mental health and wellbeing of people in rural and regional Victoria

What progress has looked like

In 2024–25, Latrobe Regional Hospital and Albury Wodonga Health completed design work to develop new digital service models and identify the technology needed to deliver tailored digital mental health services.

Albury Wodonga Health successfully trialled virtual clinician and peerled education groups for adults after hospital discharge, and for parents and guardians of children and young people receiving community mental health care. The pilot was completed in December 2025, with evaluation results guiding plans to continue and expand the service in 2026.

Latrobe Regional Hospital progressed a multipart digital pilot in 2025–26, including virtual peer support groups, vehicle mounted Starlink internet on outreach vehicles to support clinicians in remote areas, and a Healthdirect virtual clinic for people in East Gippsland. Local evaluation is underway to inform scaling of these digital service models.

In progress

Recommendation 41:**Addressing stigma and discrimination****What progress has looked like**

The Victorian Government is working to reduce stigma and discrimination through targeted initiatives and ensuring rights-based protections are in place for all Victorians. For example, the 10-year *Diverse Communities Mental Health and Wellbeing Framework* actively promotes inclusive, intersectional approaches to support marginalised communities. As part of this effort, the *Diverse Communities Grants Program* has funded organisations like Wellspring for Women to create mental health resources in multiple languages, helping reach culturally diverse groups. In schools, early findings from the Mental Health in Primary Schools program

show that, over time, increasing the capacity of schools to support the mental health and wellbeing of their students is helping to reduce stigma among staff and families. As of April 2025, Victoria's strengthened anti-vilification laws protect individuals from public hatred based on protected attributes, including disability. In addition, the Victorian Equal Opportunity and Human Rights Commission plays an important role in promoting fairness and protecting rights. It helps people address unlawful discrimination and supports individuals experiencing discrimination related to mental illness.

In progress

Recommendation 42:

A new Mental Health and Wellbeing Act

What progress has looked like

Victoria's *Mental Health and Wellbeing Act 2022* (the Act) commenced on 1 September 2023. It contains new rights-based objectives and principles to drive the highest possible standard of mental health and wellbeing for Victorians.

It also establishes new roles and entities including a new Mental Health and Wellbeing Commission, the non-legal mental health advocacy service, and a new Chief Officer for Mental Health and Wellbeing.

We have also created a range of resources to help the community and mental health and wellbeing services understand the Act and what it means in practice.

Delivered

Recommendation 44:

A new Mental Health and Wellbeing Commission

What progress has looked like

The Mental Health and Wellbeing Commission was established as an independent statutory authority on 1 September 2023 under the *Mental Health and Wellbeing Act 2022*.

It elevates the leadership of people with lived experience and provides functions to monitor and publicly report on the performance, quality and safety of the mental health and wellbeing system; undertake resolution processes and investigations into complaints; and conduct inquiries.

Delivered

Recommendation 43:

Future review of mental health laws

What progress has looked like

Recommendation 43 is planned to begin in the third phase of the reform.

Planned for phase three from 2028

Recommendation 45:

Effective leadership of and accountability for the mental health and wellbeing system

What progress has looked like

Mental Health Reform Victoria (MHRV) was established in 2020 to start early work on the Royal Commission's recommendations. The MHRV office and its responsibilities were transferred to the Mental Health and Wellbeing Division of the Department of Health on 26 July 2021.

As part of the transition, roles have been created for people with lived and living experience as a carer or consumer.

The *Mental Health and Wellbeing Act 2022* established a new role of Chief Officer for Mental Health and Wellbeing.

Delivered

Recommendation 46:**Facilitating government-wide efforts****What progress has looked like**

A range of governance structures to implement the Royal Commission's recommendations and facilitate government-wide and community-wide approaches to improving mental health and wellbeing were established. These include the:

- Mental Health and Wellbeing Secretaries' Board Sub-Committee
- Suicide Prevention and Response Secretaries' Board Sub-Committee; and
- Interdepartmental Committee on Mental Health.

Delivered**Recommendation 48:****Selecting providers and resourcing services****What progress has looked like**

Admitted mental health services are now funded under the National Activity-Based Funding model. Most non-admitted mental health services transitioned to Activity-Based Funding on 1 July 2025.

We continue to progress work to ensure funding models appropriately reflect service complexity and workforce requirements.

In progress**Recommendation 47:****Planning the new mental health and wellbeing system****What progress has looked like**

The *Statewide Mental Health and Wellbeing Service and Capital Plan 2024-2037* has been released to guide government and sector decisions in planning for future mental health and wellbeing services.

Work on Regional Plans has recently commenced, leveraging the process for Local Health Service Network Clinical Service Plans.

Partially delivered and in progress**Recommendation 49:****Monitoring and improving mental health and wellbeing service provision****What progress has looked like**

The Mental Health and Wellbeing Outcomes and Performance Framework (MHWOPF) was released in December 2024, outlining a new approach to measuring performance for the mental health and wellbeing system. Refer to Recommendation 1 for progress on this connected reform.

In progress

Recommendation 50:

Encouraging national partnerships

What progress has looked like

The first National Mental Health and Suicide Prevention Agreement was signed, along with Victoria's related agreement with the Commonwealth Government, in 2021–22. Both the National and Bilateral agreements are currently being delivered.

A new five-year National Agreement is being negotiated, guided by the recommendations of the Productivity Commission's 2025 review.

Delivered

Recommendation 51:

Commissioning for integration

What progress has looked like

The *National Health Reform Agreement* progresses updated commissioning models for mental health and wellbeing services.

In progress

Recommendation 52:

Improving the quality and safety of mental health and wellbeing services

What progress has looked like

Delivered by Safer Care Victoria, the Mental Health Improvement Program was established in 2021 to strengthen safety and quality of mental health and wellbeing care across services. Statewide initiatives have been driven to reduce restrictive practices, improve sexual safety, reduce compulsory treatment, embed evidence informed guidelines and build capability in co-design, quality improvement and system leadership.

The Office of the Chief Psychiatrist has a legislated role to provide clinical leadership and expert clinical advice, working with services to support continuous improvement. It partners with the Safer Care Victoria's Mental Health Improvement Program and supports engagement with the sector. This includes hosting regular sector-wide forums and issuing bulletins to address quality and safety issues in mental health service provision and promote continuous improvement.

Partially delivered and in progress



Recommendation 53:**Strong oversight of the quality and safety of mental health and wellbeing services****What progress has looked like**

In 2024-25, we strengthened engagement with the sector and advanced consumer rights through delivering a complaints handling webinar, running a statewide service visits roadshow, and launching the Mental Health and Wellbeing Commission's *Lived Experience Plan*.

Key outputs included major reports and submissions on system monitoring, complaints, restrictive practices, prescribing standards and system reviews to support transparency, learning, and continuous improvement across the mental health and wellbeing system.

**Partially delivered and in progress****Recommendation 54:****Towards the elimination of seclusion and restraint****What progress has looked like**

The *Towards Elimination of Restrictive Practices* initiative has surpassed the target of a 20% reduction since 2022. Now in phase two, the initiative has expanded to 27 units across 16 health services.

The regulation of chemical restraint in mental health services commenced in 2022 under the *Mental Health and Wellbeing Act*. This enabled the regulation of restrictive practices in emergency departments and urgent care centres. As part of this change, the Office of the Chief Psychiatrist now monitors chemical restraint and mental health service provision in emergency departments and urgent care centres, so that restrictive practices are only ever used as a last resort.

To uplift workforce capability, the Office of the Chief Psychiatrist has also issued clinical guidelines and factsheets, held quality and safety forums and carried out site visits to all designated mental health services.

The *Seclusion and Restraint Report* was published in November 2025 to provide a comprehensive account of restrictive intervention use in Victoria, promoting transparency and providing a basis for clinical accountability from health services. The report provides a broad overview of seclusion and restraint data, documenting a steady reduction in seclusion and restraint in Victoria from 2020-21 to 2024-25.

Partially delivered and in progress

Recommendation 55:

Ensuring compulsory treatment is only used as a last resort

What progress has looked like

Safer Care Victoria's Reducing Compulsory Treatment initiative has established a co-designed, evidence-informed approach, including a 'what works' package, to support community mental health services to reduce compulsory treatment. Across the first phase of implementation, participating health services achieved a significant increase in completed advance statement of preference for consumers on compulsory treatment, strengthening supported decision-making capability.

In progress

Recommendation 56:

Supporting consumers to exercise their rights

What progress has looked like

Victoria Legal Aid has fully operationalised its database and information sharing systems, recruited staff, and delivered opt-out non-legal advocacy through [Independent Mental Health Advocacy \(IMHA\)](#).

A triage line for accessing legal representation for people seeking representation at [Mental Health Tribunal Hearings](#) has also been established.

Partially delivered and in progress

Recommendation 57:

Workforce strategy, planning and structural reform

What progress has looked like

Workforce programs, including the commissioning of early career and graduate programs, have supported a 33 per cent growth in the Victorian public mental health workforce between 2021 and 2025. This equates to over 2800 FTE. A nation leading investment in the Lived and Living experience workforce has enabled this workforce to grow by 125 per cent since 2021.

The annual Mental Health and AOD Workforce Census and Personnel survey was introduced in 2021, with five annual data collections of the Census and four collections of the Personnel survey completed. These have informed ongoing workforce planning and collated evidence to support the development of workforce initiatives.

Investment in mental health and AOD traineeships, scholarships, registrar training programs and graduate programs for mental health nursing, allied health and psychiatry workforces have continued.

Targeted supports have also been delivered to grow and expand the Lived and Living Experience and the Aboriginal Social and Emotional Wellbeing workforces.

Delivered

Recommendation 58:**Workforce capabilities and professional development****What progress has looked like**

The 'Our workforce, our future' capability framework was released in December 2023. Implementation has been supported through the provision of practical resources, including guidance and tools to help organisations and workers embed the framework into everyday practice across Victoria. In 2024, over 300 mental health and wellbeing workers participated in metro and regional forums, fostering shared understanding and advancing local implementation of the workforce capability framework.

The Collaborative Centre launched its *Translational Research Strategy 2024-27* in September 2024 and also launched its Strategic Plan 2024-27.

In 2025, the functions of the Centre for Mental Health Learning were transitioned into the Collaborative Centre to support workforce development for the mental health and wellbeing sector.

Delivered**Recommendation 60:****Building a contemporary system through digital technology****What progress has looked like**

A new system is being developed to replace the current Client Management Interface/Operational Data Store, which is over 30 years old, to support better digital services and modern ways of working.

The system will be rolled out in stages to enable us to learn from each phase and improve how information is shared. The anticipated completion date of the project is mid-2028.

In progress**Recommendation 59:****Workforce safety and wellbeing****What progress has looked like**

The Mental Health Workforce Safety and Wellbeing Committee was established in May 2022 and was enshrined in the *Mental Health and Wellbeing Act 2022*. The Committee works to identify and address safety and wellbeing risks and monitor the health and wellbeing of the mental health workforce.

Training in clinical supervision has been provided to allied health professionals and mental health nurses to create safe and supportive working environments.

Partially delivered and in progress**Recommendation 61:****Sharing mental health and wellbeing information****What progress has looked like**

A workplan is being established in 2026 for how information sharing will be integrated into the Mental Health and Wellbeing Client Management System (MHCMS) implementation project. The aim is to ensure that the new system enables the policy and legislative intent of information sharing reforms. This recommendation is strongly tied to Recommendation 62.

In progress



Recommendation 62:

Contemporary information architecture

What progress has looked like

Delivery of the new Mental Health and Wellbeing Client Management System (MHCMS) is underway, with vendor selected, implementation pathway complete and technical base platform built. The program is currently focused on delivery of the MHCMS into Local Services and Area Mental and Health and Wellbeing Services. The anticipated completion date for the project is June 2028.

In progress

Recommendation 64:

Driving innovation in mental health treatment, care and support

What progress has looked like

The Collaborative Centre was established in 2022 to drive innovation in mental health treatment, care and support.

It has two lead partners, the Royal Melbourne Hospital and the University of Melbourne, supported by a network of 18 other mental health and research collaborators.

It brings together lived experience leadership, innovative service delivery and cutting-edge mental health research to drive mental health system transformation.

In progress

Recommendation 63:

Facilitating translational research and its dissemination

What progress has looked like

The Collaborative Centre launched its *Translational Research Strategy 2024-27* in September 2024.

The Strategy emphasises the use of research and evidence across the mental health and wellbeing system to guide care delivery, policy decisions, and workforce development.

Partially delivered and in progress

Recommendation 65:

Evaluating mental health and wellbeing programs, initiatives and innovations

What progress has looked like

We adhere to the Department of Treasury and Finance's Performance Management Framework, which requires programs seeking State Budget funding to consider evaluation from the design phase. This ensures appropriate evaluation frameworks are in place to generate credible and meaningful performance data over the life of the program.

Partially delivered and in progress

Progress update on the Royal Commission Interim Report recommendations

Interim Recommendation 1:

Victorian Collaborative Centre for Mental Health and Wellbeing

What progress has looked like

The Collaborative Centre has been established, and its functions are set out in the *Mental Health and Wellbeing Act 2022*. It is governed by an independent board, which includes lived experience representation. It has two lead partners, the Royal Melbourne Hospital and the University of Melbourne and is supported by a network of mental health and research collaborators.

Delivered

Interim Recommendation 2:

Targeted acute mental health service expansion

What progress has looked like

New acute mental health beds have been delivered across the system, including Hospital in the Home beds. New beds are located at Barwon, Northern, Western and Melbourne Health, PYMHWS, and the Women's Recovery Network (WREN) at Alfred, Goulburn Valley, Ramsay Health.

New mental health Hospital in the Home (HITH) programs have been implemented for adults and young people. Barwon Health delivers HITH services to adults in the Barwon area, and Parkville Youth Mental Health and Wellbeing Service delivers HITH services for young people aged 16–25 in metropolitan Melbourne. Further expansion of HITH program has included WREN and Western and a new program will be established at Monash Health in 2026–27.

Delivered

Interim Recommendation 3:

Suicide prevention

What progress has looked like

The Hospital Outreach Post-suicidal Engagement (HOPE) program provides peer, wellbeing and clinical support for people after a suicide attempt, planning or intent, and/or self-harm. HOPE has been expanded from the initial 12 sites to all 22 AMHWS and is operating at 36 locations spanning metropolitan Melbourne and regional Victoria.

In partnership with public hospitals, referral pathways into HOPE are being expanded and hours of service extended so more people can access their local HOPE service and get help at a time that suits them, without the need to attend a hospital emergency department.

A specialised HOPE service for children and young people has also been established at four infant, child and youth mental health and wellbeing services:

- Monash Children's Hospital
- Alfred Health
- Royal Children's Hospital
- PYMHWS



Delivered



Interim Recommendation 4:

Aboriginal social and emotional wellbeing

What progress has looked like

The Victorian Aboriginal Community Controlled Health Organisation (VACCHO) and the Department of Health are proudly working in partnership to enable Aboriginal and Torres Strait Islander Peoples living in Victoria to access safe, inclusive and respectful social and emotional wellbeing care and mental health services for themselves, their families, and their communities.

We have delivered three key reforms:

- Balit Durn Durn Centre for Excellence in Aboriginal Social and Emotional Wellbeing
- Multi-disciplinary Aboriginal social and emotional wellbeing teams in mental health services

- New training scholarships to build a skilled and qualified Aboriginal mental health and social and emotional wellbeing workforce.

78 Aboriginal and Torres Strait Islander students undertaking undergraduate and post-graduate qualifications in mental health related disciplines have been awarded scholarships since 2022. This exceeds the target of 30 scholarships over five years.

Delivered



Interim Recommendation 5:

A service designed and delivered by people with lived experience

What progress has looked like

The Lived Experience Residential Service trial is an innovative peer-led model co-designed in partnership with Victorians with lived and living experience of mental ill-health.

Led by Mind Australia in partnership with Barwon Health, the trial will deliver holistic, safe and trauma-informed care for people experiencing high levels of distress or crisis.

The service will operate from a purpose-built facility in Moolap, Greater Geelong.

In progress

Interim Recommendation 6:

Lived experience workforces

What progress has looked like

The Lived Experience Workforce Development Program continues to build strong supports and structures for LLE roles. Oversight has now transitioned to the Collaborative Centre.

This program has increased the LLE workforce by 125% in Area Mental Health and Wellbeing Services since 2021.

In progress

Interim Recommendation 7:

Workforce readiness

What progress has looked like

Since 2021, there has been a 33 per cent growth in FTE in public mental health and wellbeing services and a 125 per cent increase in the LLE workforce. This includes:

- 575 junior medical officer rotations each year across 22 health services since 2022
- more than 100 new credited psychiatry registrar positions
- more than 2,500 new early career and graduate roles supported by discipline specific educators, also creating development opportunities for experienced clinicians roles
- more than 1,200 scholarships have been awarded to support training pathways for mental health nursing, allied health, AOD and LLE workforce
- implemented mid-career Transition to Mental Health program to develop alternate progression pathways for registered nurses, occupational therapists and social workers
- encouraged workforce relocation into Victoria's regional and rural locations through the Regional and Rural Incentive Program.

Delivered

Interim Recommendation 8:

New approach for mental health investment

What progress has looked like

On 1 January 2022, the Victorian Government implemented a new revenue mechanism for the provision of operational funding for mental health services, known as the Mental Health and Wellbeing Levy (the Levy).

The Levy is a payroll surcharge on wages paid in Victoria by businesses with national payrolls over \$10 million a year.

The revenue mechanism provides dedicated funding that supports investment in Victoria's mental health system, supplementing the current level and future expected growth of the Government's funding commitments as recommended by the Royal

Commission. The amount raised through the levy and government's total output expenditure for mental health and wellbeing is reported in the *Chief Officer for Mental Health and Wellbeing Report*.

Additionally, the Mental Health and Alcohol and Other Drugs Capital Renewal Fund, now valued at \$80 million overall, aims to address physical safety and wellbeing risks in Victoria's mental health and AOD facilities, through works such as remodelling and refurbishment to make services better and safer for consumers, staff and carers.

Delivered

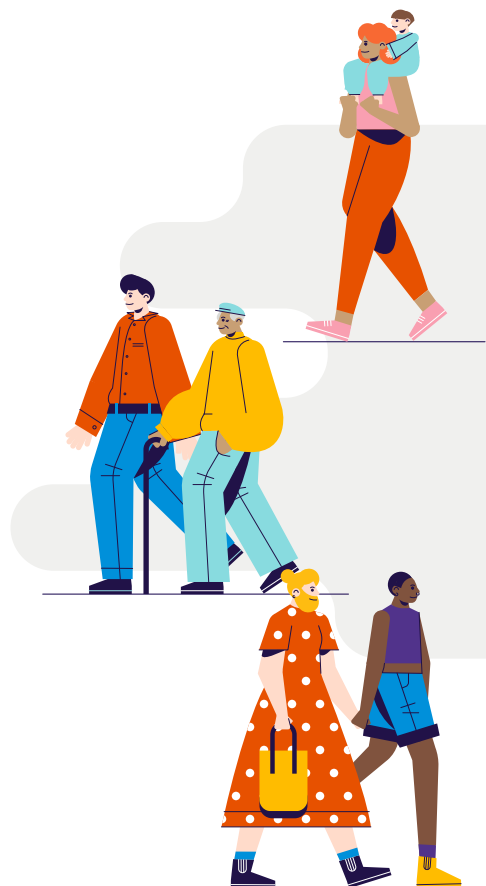
Interim Recommendation 9:

The Mental Health Implementation Office

What progress has looked like

The Victorian Government established a mental health implementation office in Mental Health Reform Victoria in February 2020. Its responsibilities were transferred to the Mental Health and Wellbeing Division, Department of Health in 2021.

Delivered





3

Building on our progress

Over the past five years, Victoria has made substantial progress in building a more accessible, connected and community-based system. This progress provides a strong foundation, while reinforcing that reform is ongoing.

Future work is guided by *The Next Phase of Reform*, released in December 2024, which sets a clear pathway to consolidate gains and deliver lasting, system-wide change.

This next phase focuses on strengthening what has been established - embedding reforms, improving system performance, and ensuring services continue to meet the needs of Victorians. It will be delivered in partnership with people with lived and living experience, families and carers, alongside sector and community stakeholders.

Transparency and accountability will continue to underpin this work. Progress will be monitored and reported, providing visibility of reform outcomes and supporting continuous improvement.

Victoria's mental health and wellbeing reform is making progress with the foundations now in place to support long-term change. The focus ahead is on continuing to realise the vision set out by Victoria's Royal Commission and ensuring the system continues to evolve to better support all Victorians to access care when and where they need it.



