



Bush Remedies

How to support Speech Pathologists in the ‘bush’ in their provision of therapy to clients with an acquired brain injury.

Louise Wilkinson

Outline

- The Acquired Brain Injury (ABI) Unit
- The Community Integration and Support Service
- The DHS Pathways Home Scholarship
- Survey Findings
- Future



The ABI Unit

- Provides a state-wide in-patient rehabilitation service
- For clients aged 16-65years
- For clients with a non-compensable ABI
- With cognitive and/or behavioural difficulties



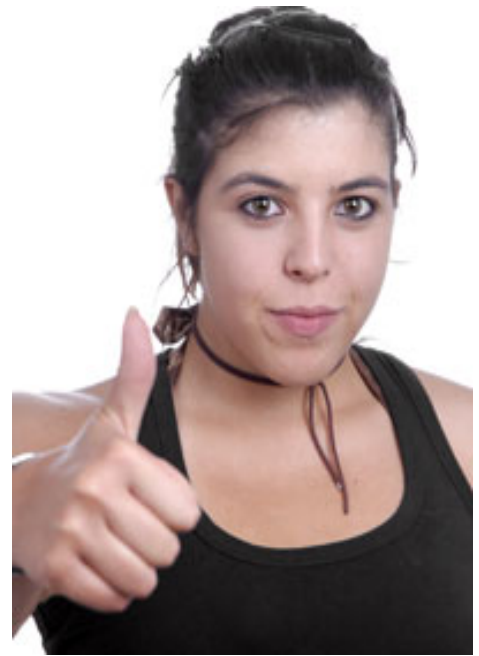
Community Integration and Support Service

- To assist clients in their transition from the ABI Unit to locally based sub-acute community services
- A state-wide primary and secondary consultation service
- Employs a neuro-psychologist and occupational therapist



Communication Difficulties

- Cognitive, linguistic and behavioural changes impact on everyday communication skills
- Trouble understanding others, participating in conversations, being understood by others, talking too much





Survey Findings

- Diverse and demanding caseloads
- Methods of prioritisation
- Time pressures



Survey Findings

- Reduced confidence
- Limited experience



Survey Findings

- Limited access to professional development and appropriate supports
- Difficult to work as part of an effective multi-disciplinary team



Support Solutions

- Case specific mentoring and advice from an ABI Speech Pathologist
- Opportunity to consult over time
- Accessible professional development



The Future

- Explore funding options to pilot a speech pathology service within the current CISS framework
- To evaluate a pilot and seek funding for an expansion of the CISS service

