

Sustaining Community Wellbeing

an integrated response to the emotional and social health impacts of drought and rural adjustment



Sylvia Barry Initiatives
Primary Health Branch

Department of Human Services



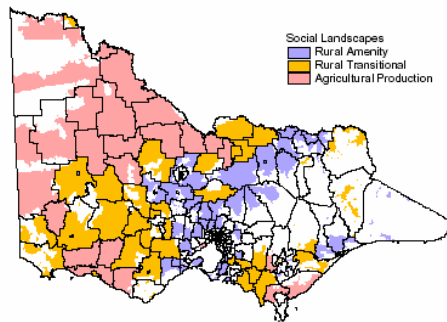
'Australia suffers worst drought in 1,000 years
Depleted reservoirs, failed crops and arid farmland spark
global warming tussle'

John Vidal, environment editor
Wednesday November 8, 2006

[The Guardian](http://www.theguardian.com)

The Emergence of Different Victorian Landscapes

- Neil Barr's major research project on social change in rural Victoria has significant implications for future policy settings.
- Economically and socially, rural Victoria consists of three regions, or landscapes:
 - agricultural production;
 - rural amenity;
 - rural transition;



'Sustaining community wellbeing' initiatives

A collage of images and text related to community wellbeing initiatives. At the top right, a cartoon shows a man asking 'DEPENDENTS?' and another man replying 'EC ASSISTANCE' with 'X X' marks. Below the cartoon, text reads '33.5 counsellors' and ''No bull' pragmatic counselling approach'. The collage includes photos of people at community workshops, a 'Primary Care Partnerships' logo, a 'Sustainable Farm Families' logo, a 'Facilitator Resource Manual' cover, and a photo of two women. At the bottom right, text reads 'Community & workforce skills development' and 'Integration & sustainability' with a date stamp '22/11/2015'.

Connecting... embedding
building sustainable & robust approaches



Further information

Sally Rose Primary Health Drought Coordination

sally.rose@dhs.vic.gov.au

www.health.vic.gov.au/pcps

No Bull – Bouverie Centre, La Trobe University

www.latrobe.edu.au/bouverie/handbook2007/section2/1_Cal_Work.pdf

Sign posts for action.....

**Protecting and
promoting
Health & resiliency
in Harrow –**

*Donna Bridge, Wimmera PCP
Anne Pekin, CEO of Harrow Bush Nursing Hospital*



**Strategic framework for health
promotion planning for climate
change and rural adjustment-**

*Rosie Row,
EO with Southern Grampians PCP*