



**Rosie Rowe**

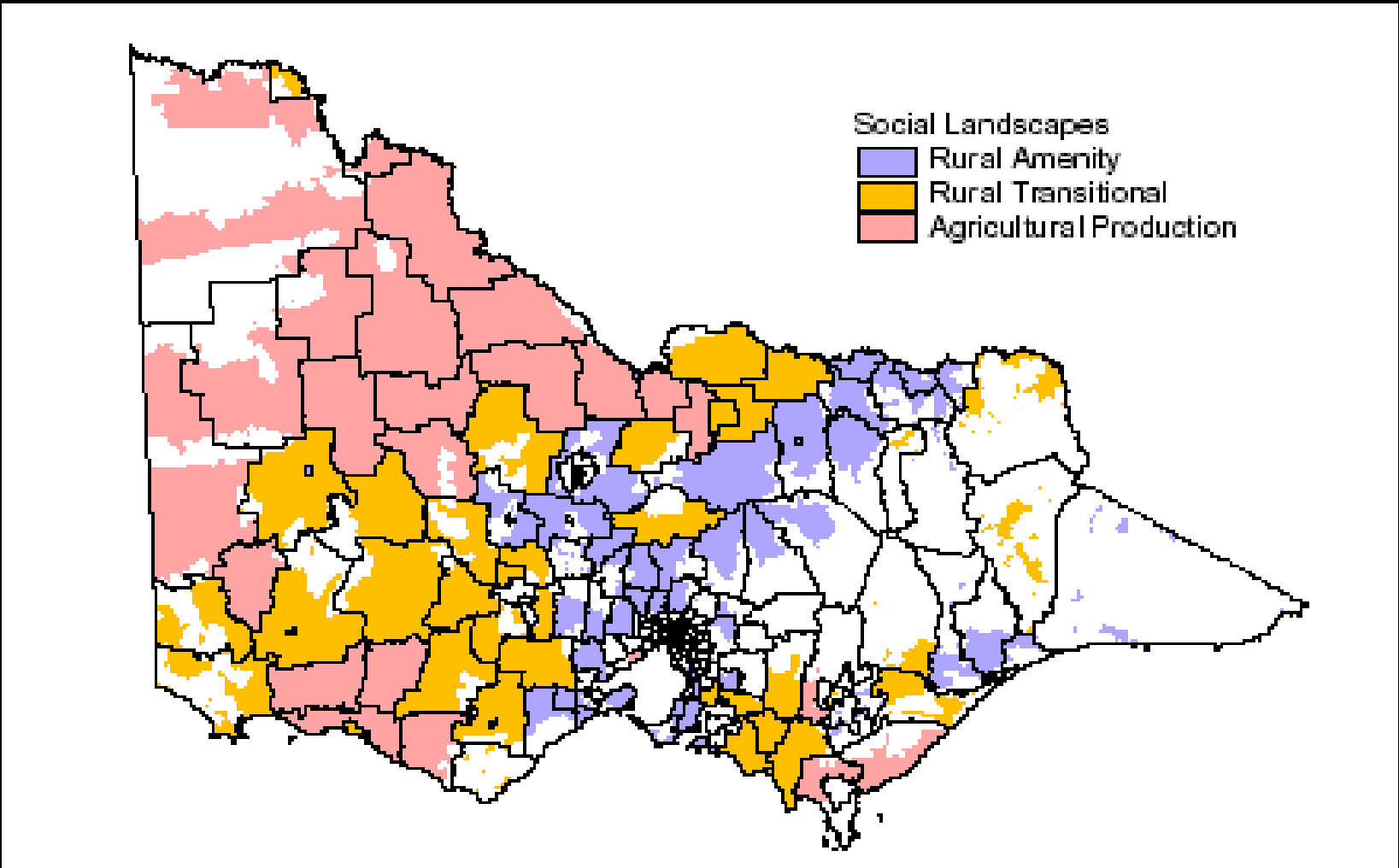
**Southern Grampians & Glenelg PCP**





Richard Weatherly - *Spirit Of Howqua*

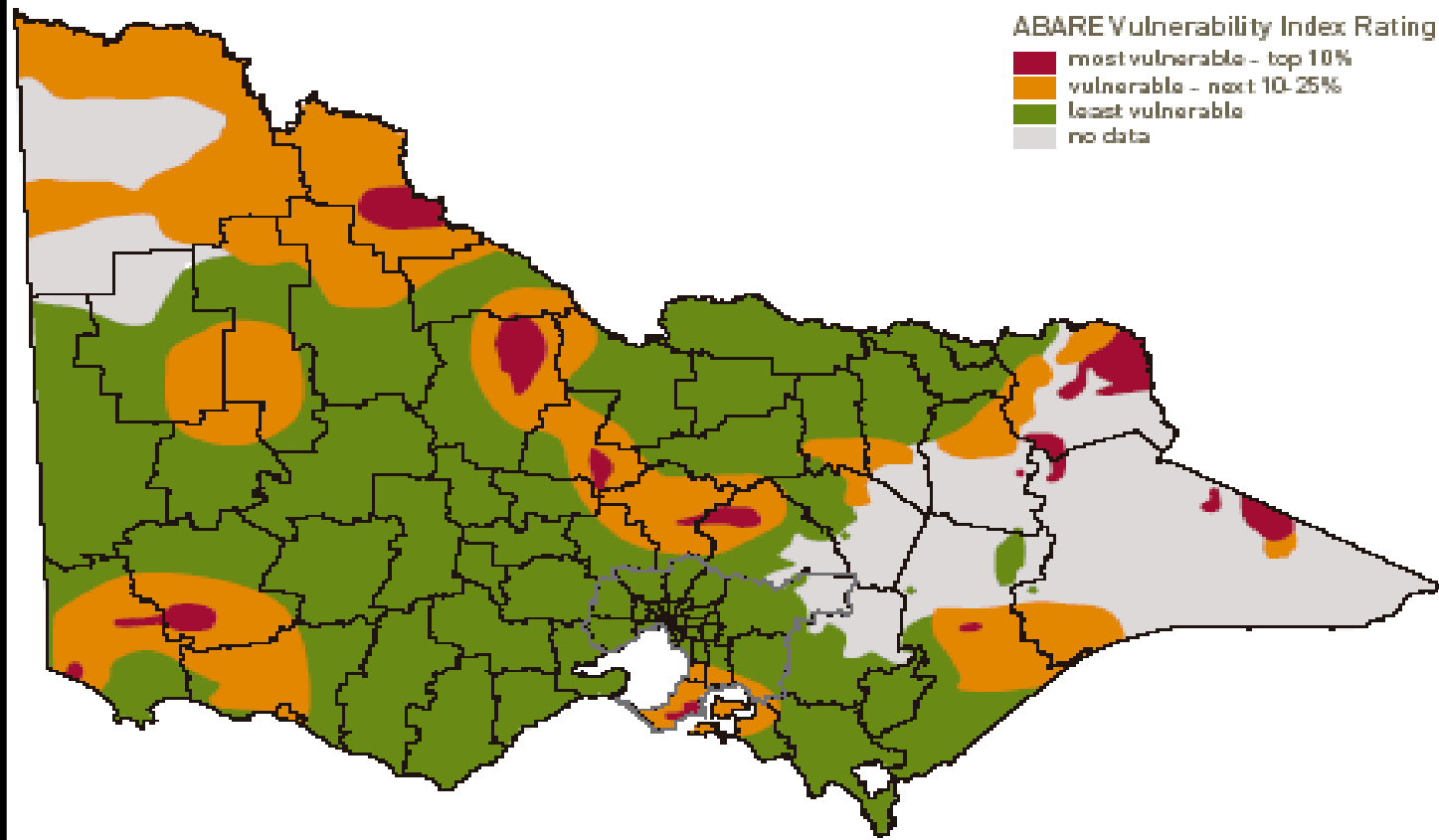
**Make the biggest difference**



**Vulnerability - social/demographic landscape**

# Level of community vulnerability in the face of structural adjustment<sup>1</sup>

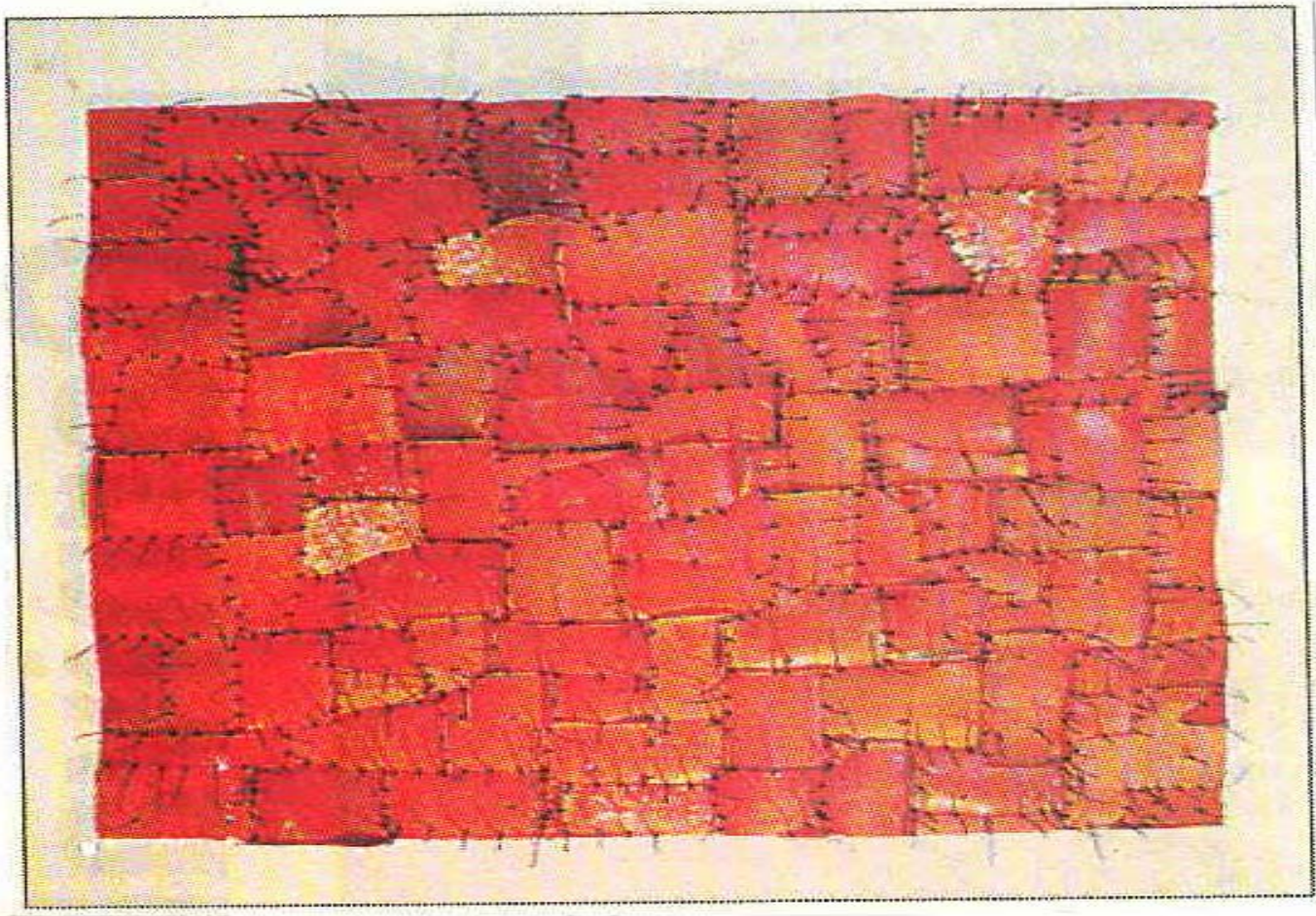
Agricultural regions of Victoria



**Vulnerability - rural adjustment**



**Highest Vulnerability = those without resources to adapt**



Carmel Wallace, untitled

## Integrated Action Plan

# Policy Signpost #3

Climate Change  
Adaptation:  
A Framework  
for Local Action

Southern Grampians and Glenelg  
Primary Care Partnership

Rosie Rowe and  
Anita Thomas



[www.sggpcp.com](http://www.sggpcp.com)



Nicky Hepburn - *Cuttlefish, Seed Pods, Galls II, Bark* 2007

**Partnership across silos & across the world**



Jean-Luc Cornec - *Phone Sheep*



Richard Weatherly - *Spirit Of Howqua*

[www.sggpcp.com](http://www.sggpcp.com)