

Engaging the Acute Sector with RIMS



**DHS State wide Forum:
Better care – going forward with e-health**

What is RIMS?

- System for collecting, sending & storing referrals electronically
- Primarily based on SCTT tools
- Supports secure email, Autofax & printing

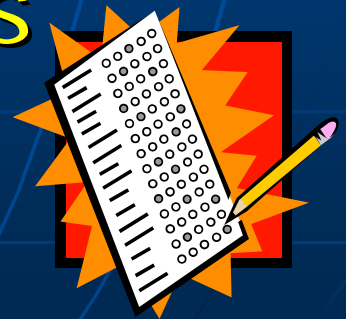
Goals

- Improve efficiency of referral procedure
- Eliminate duplicate data entry
- Provide an intuitive tool for referrals
- Rely on minimal training & expertise
- Provide statistical information
- Simplify transfer of information

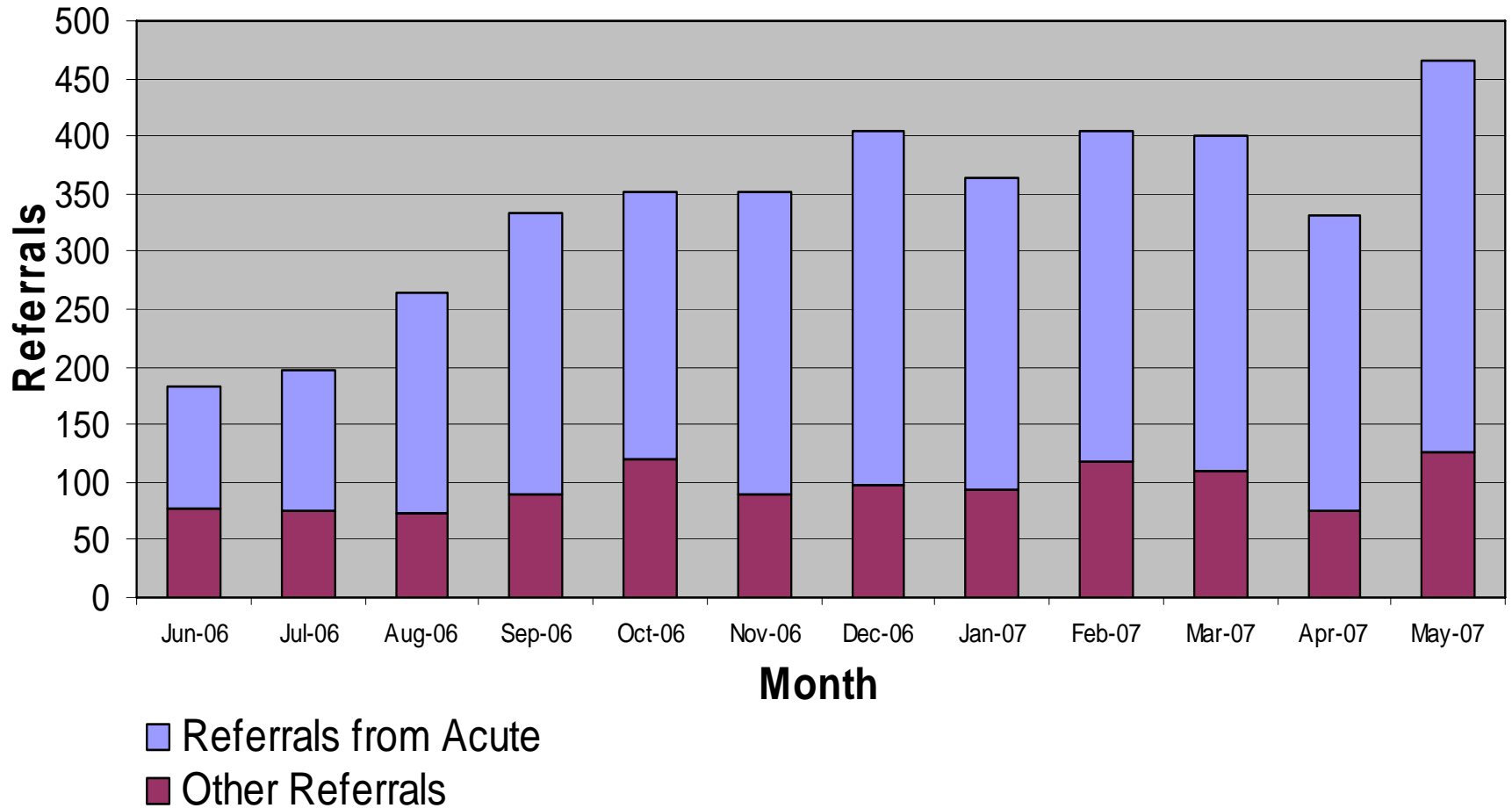


How RIMS Works

- PAS interface
- SCTT tools and non-SCTT forms
- Default forms per provider
- ConnectingCare service directory and secure email
- Shared data across referrals



Impact on e-Referrals



Deployment



- Ballarat Health Services
(subacute, acute, residential facilities
and community programs)
- Grampians region – Horsham, Ararat ,
Stawell and Creswick

BHS rollout

- Started within subacute sector
- Targeted areas such as PAC
- Exposure to acute wards
- Requests for access/training
- Psychiatric services targeted for 2007



Change Issues

- Varied computer skills
- Currency of PAS information
- PC access
- Confirmation of e-referrals
- Policies & procedures in place for receiving e-referrals



Benefits

- Interface with PAS
- Data defaults across referrals
- Standardised content
- Form wizards & prompts
- Flexible form design



continued.....

Benefits (continued)

- Analysis of referral activity
- Permanent copy of referrals
- Multiple transmission methods
- Paperless referrals

Future Development

- SCTT 2006 forms (in progress)
- TCM interface (in progress)
- Streamlined data entry
- Transfer form



Key Messages

e-referral systems will be used if they

- are simple to learn and use
- reduce multiple data entry
- manage the referral information requirements of receiving agencies
- keep a record of past referrals
- provide multiple ways of delivering referrals