
**2006-07 E-REFERRAL CAPACITY BUILDING THROUGH
PRIMARY CARE PARTNERSHIPS
SUMMARY REPORT – PCP ADDENDUM**

PREPARED BY: ADRIAN WATSON

RELEASE VERSION: 1.0

RELEASE DATE: 4 FEBRUARY 2008

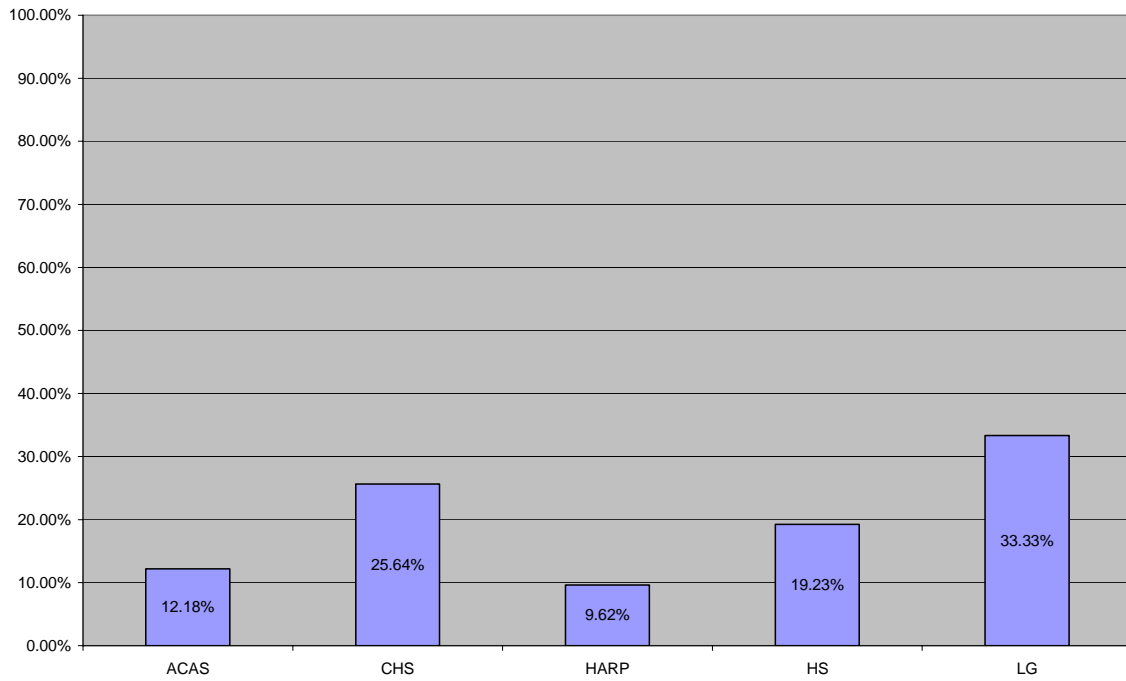


Figure 1 Percentage of total sent and received e-referrals in the Banyule Nillumbik PCP by service type for June of the 2006-07 financial year

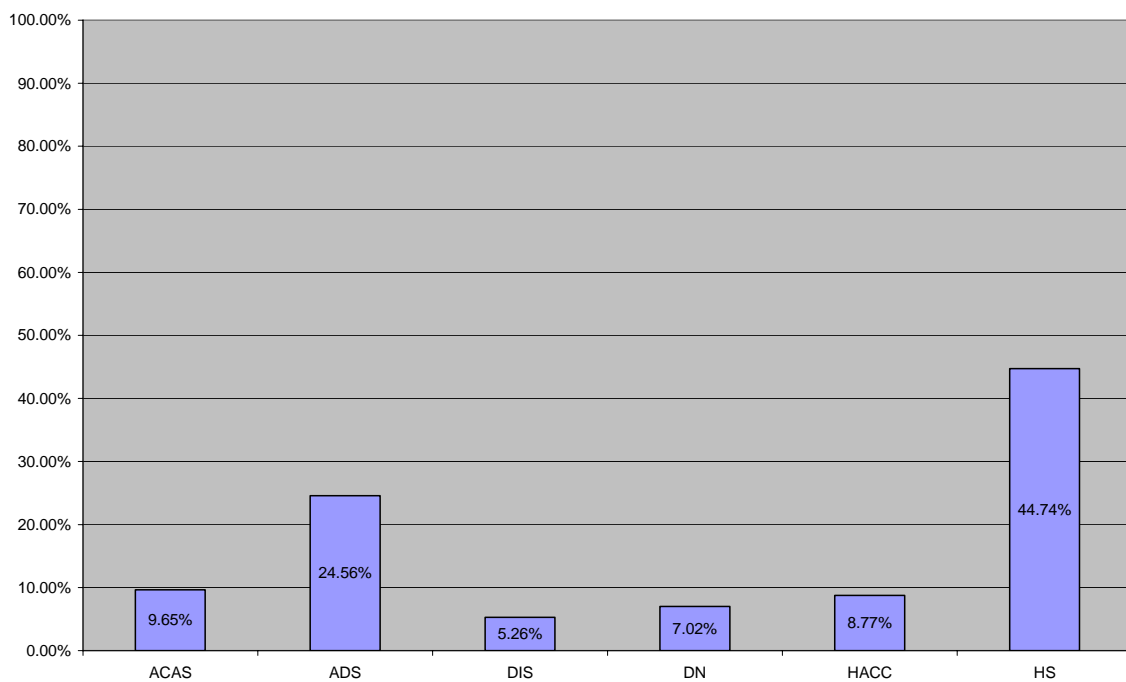


Figure 2 Percentage of total sent and received e-referrals in the Barwon PCP by service type for June of the 2006-07 financial year

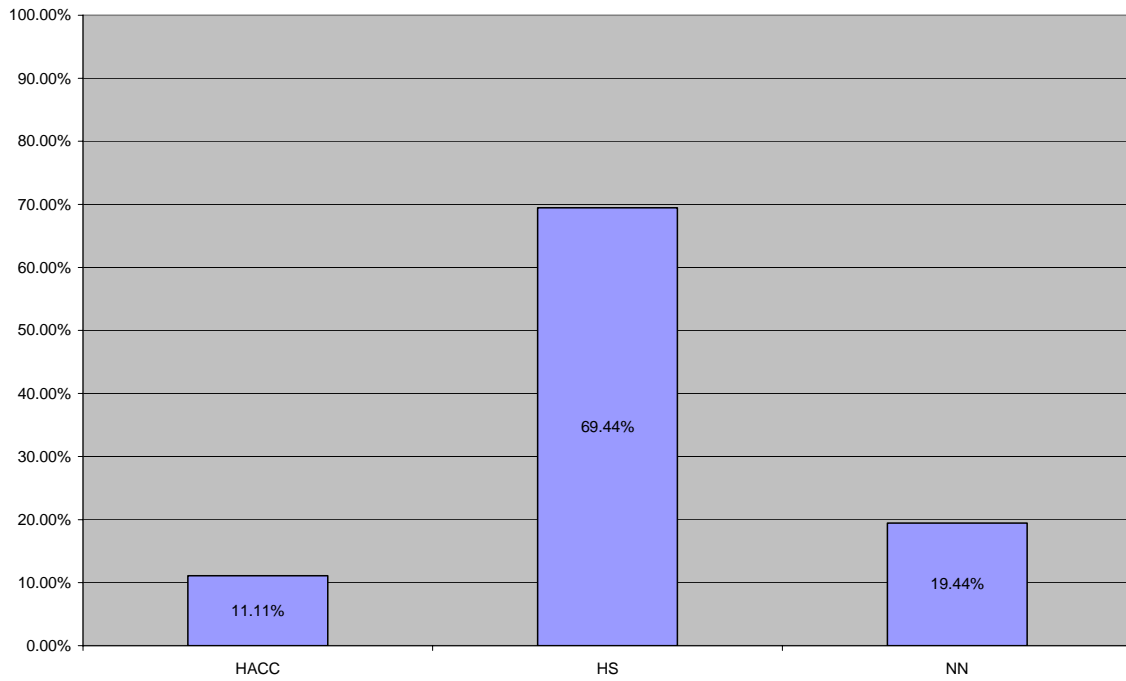


Figure 3 Percentage of total sent and received e-referrals in the Bendigo Loddon PCP by service type for June of the 2006-07 financial year

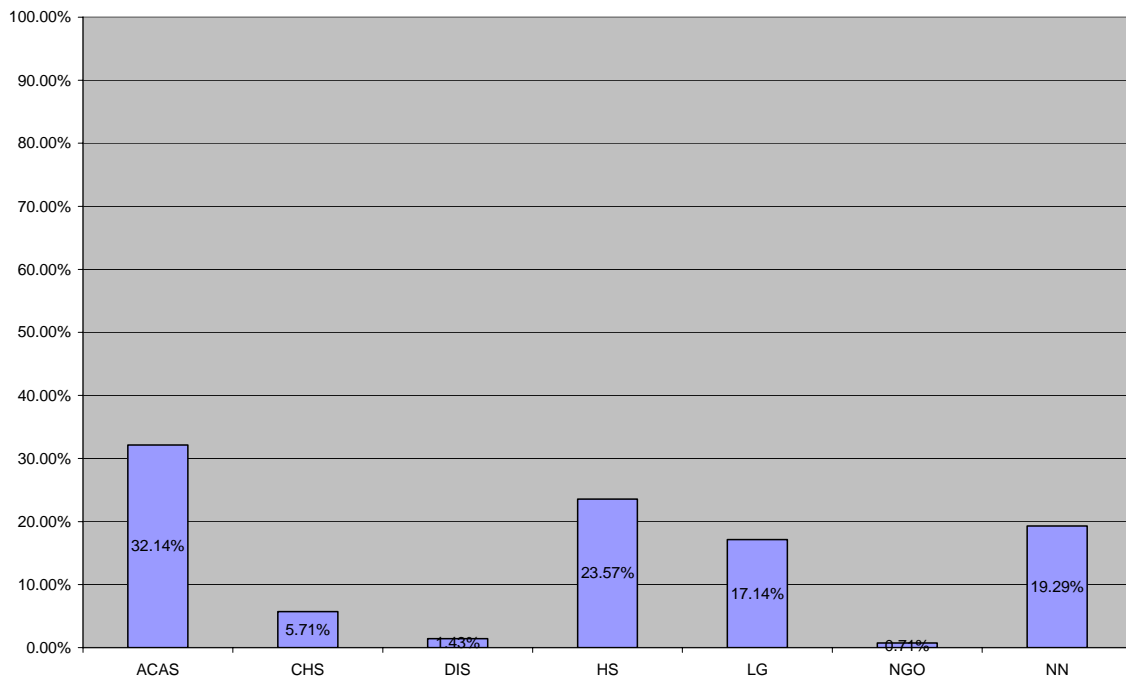


Figure 4 Percentage of total sent and received e-referrals in the Brimbank Melton PCP by service type for June of the 2006-07 financial year

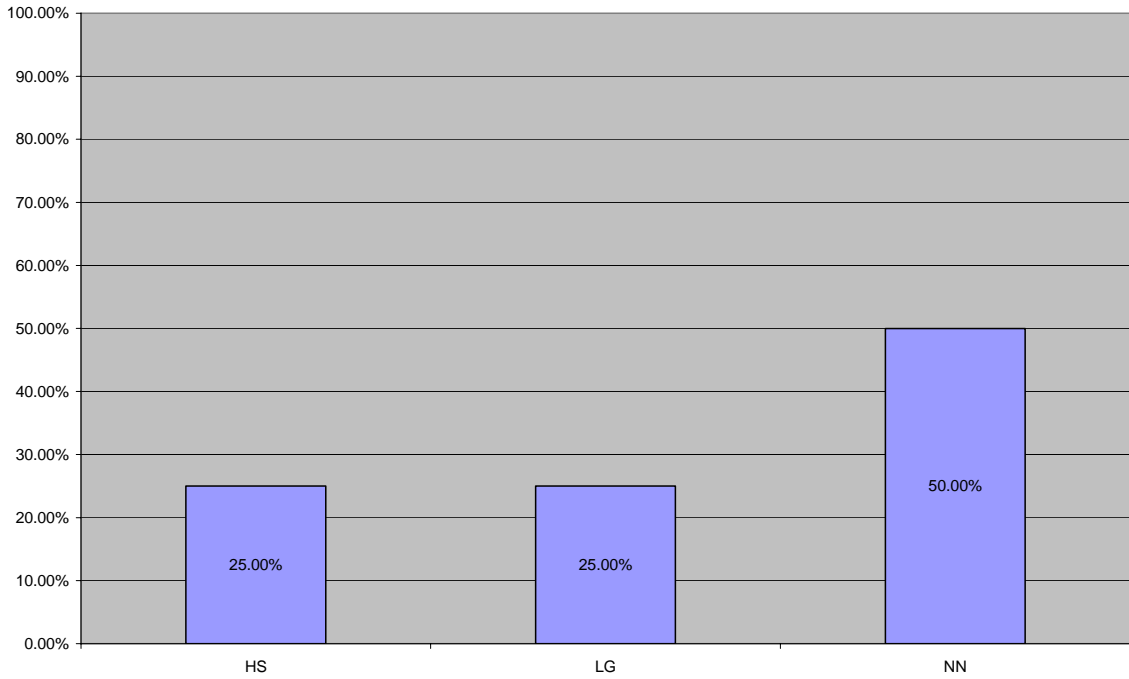


Figure 5 Percentage of total sent and received e-referrals in the Campaspe PCP by service type for June of the 2006-07 financial year

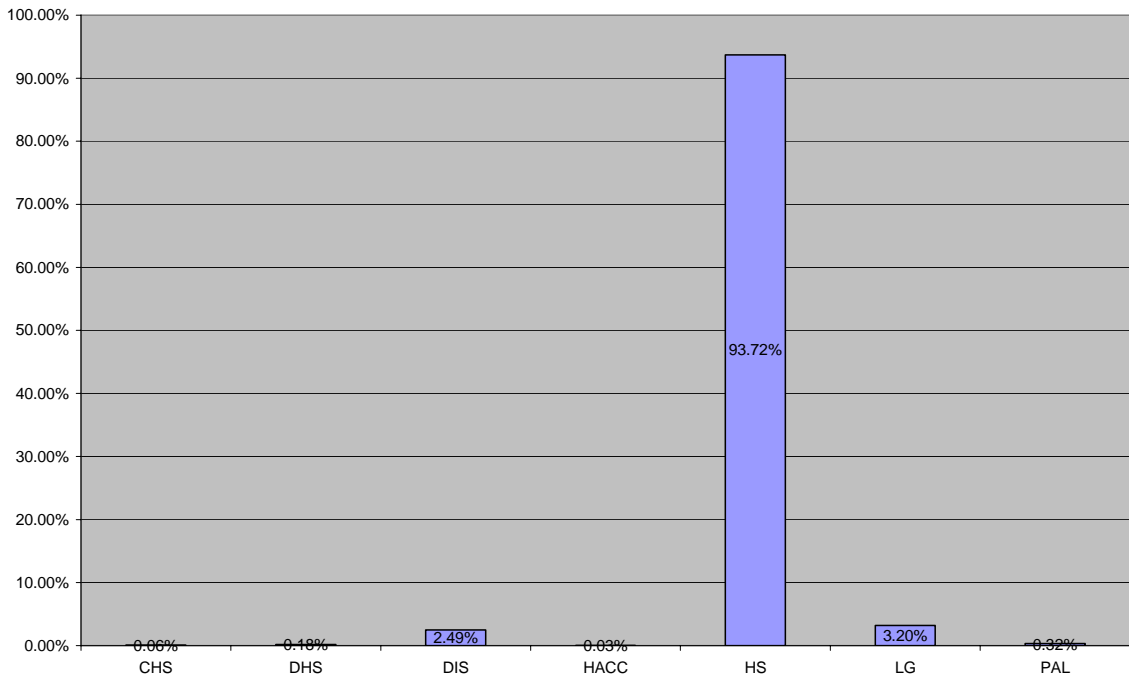


Figure 6 Percentage of total sent and received e-referrals in the Central Highlands PCP by service type for June of the 2006-07 financial year

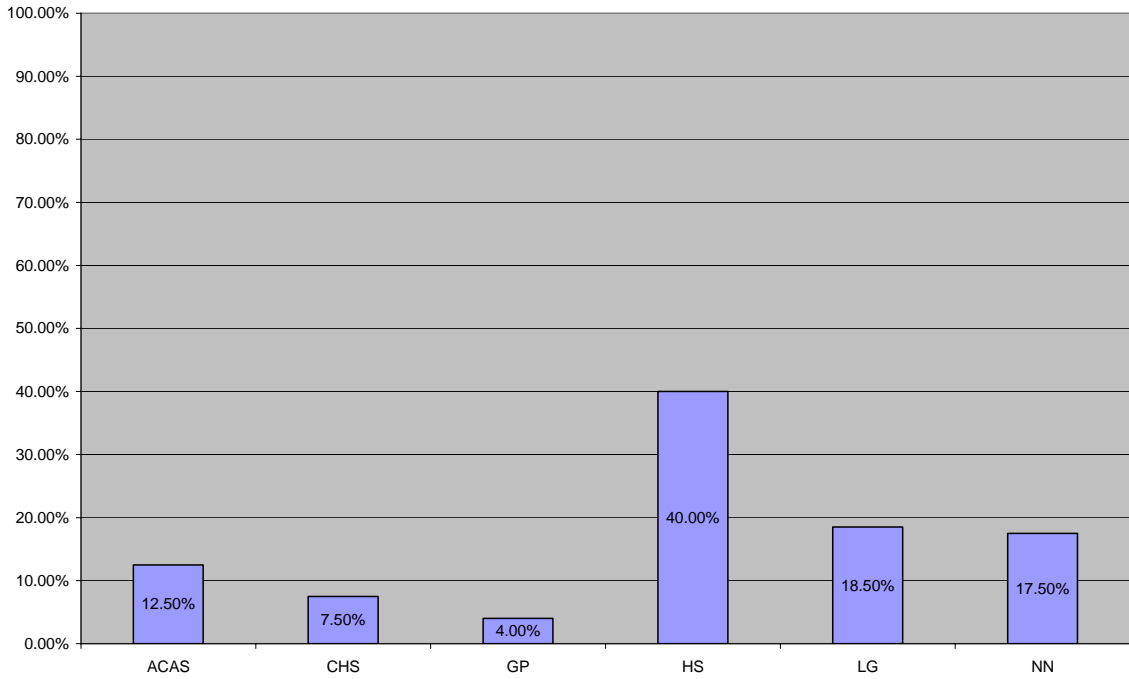


Figure 7 Percentage of total sent and received e-referrals in the Central Victorian Health Alliance PCP by service type for June of the 2006-07 financial year

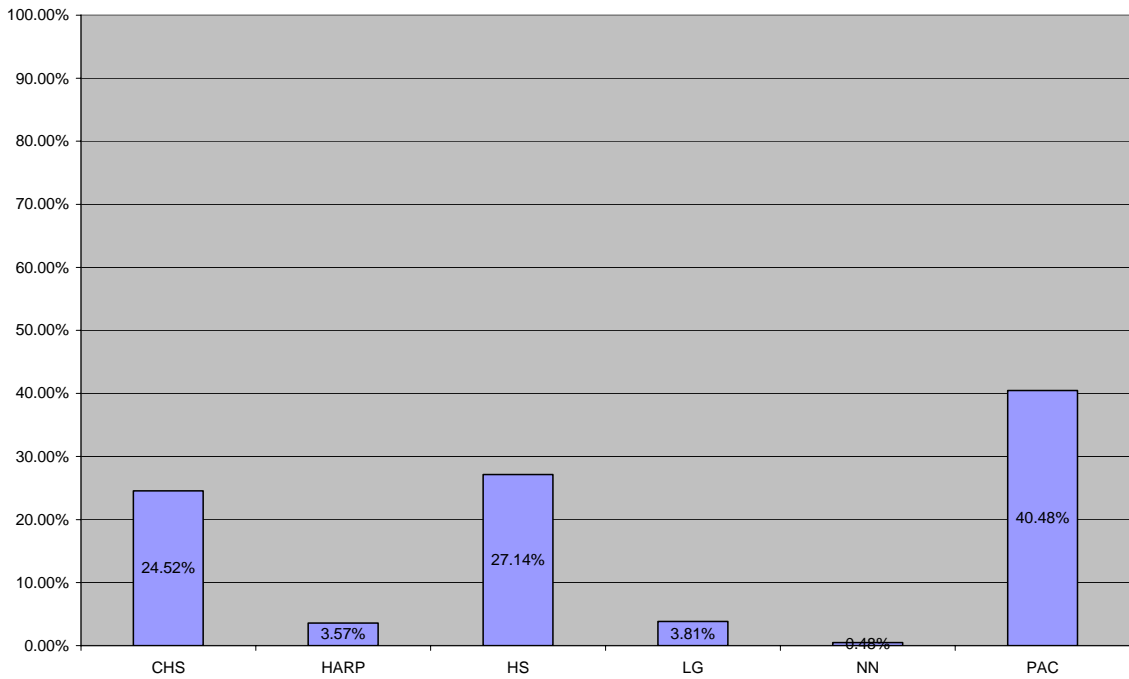


Figure 8 Percentage of total sent and received e-referrals in the Central West Gippsland PCP by service type for June of the 2006-07 financial year

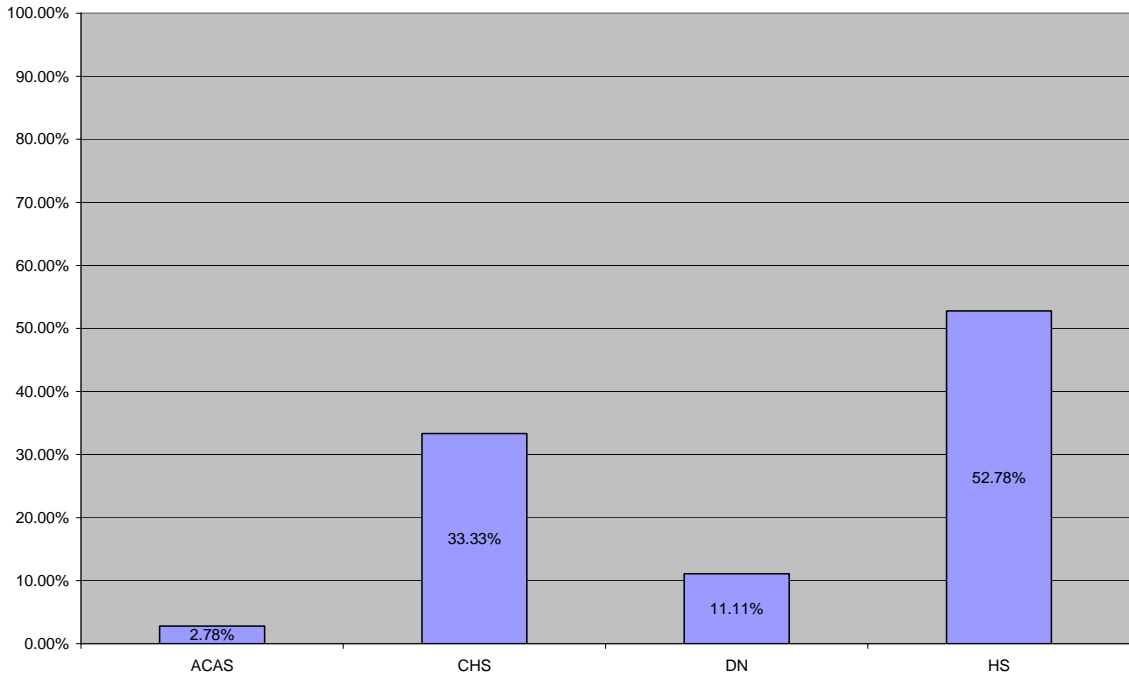


Figure 9 Percentage of total sent and received e-referrals in the East Gippsland PCP by service type for June of the 2006-07 financial year

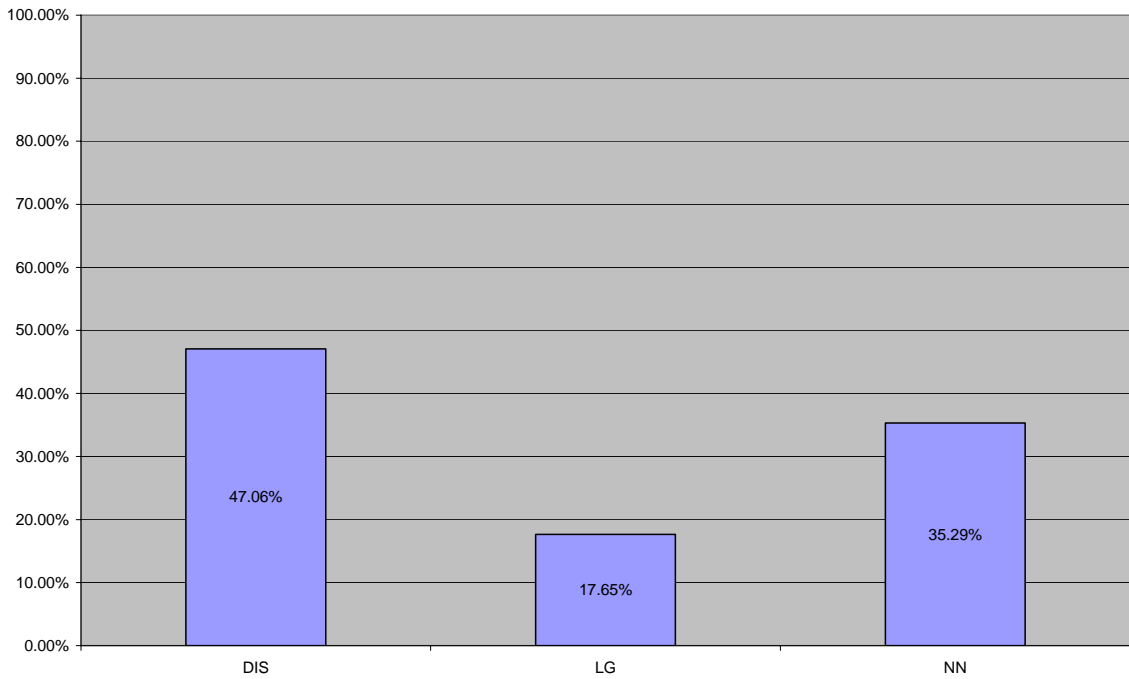


Figure 10 Percentage of total sent and received e-referrals in the Frankston Mornington Peninsula PCP by service type for June of the 2006-07 financial year

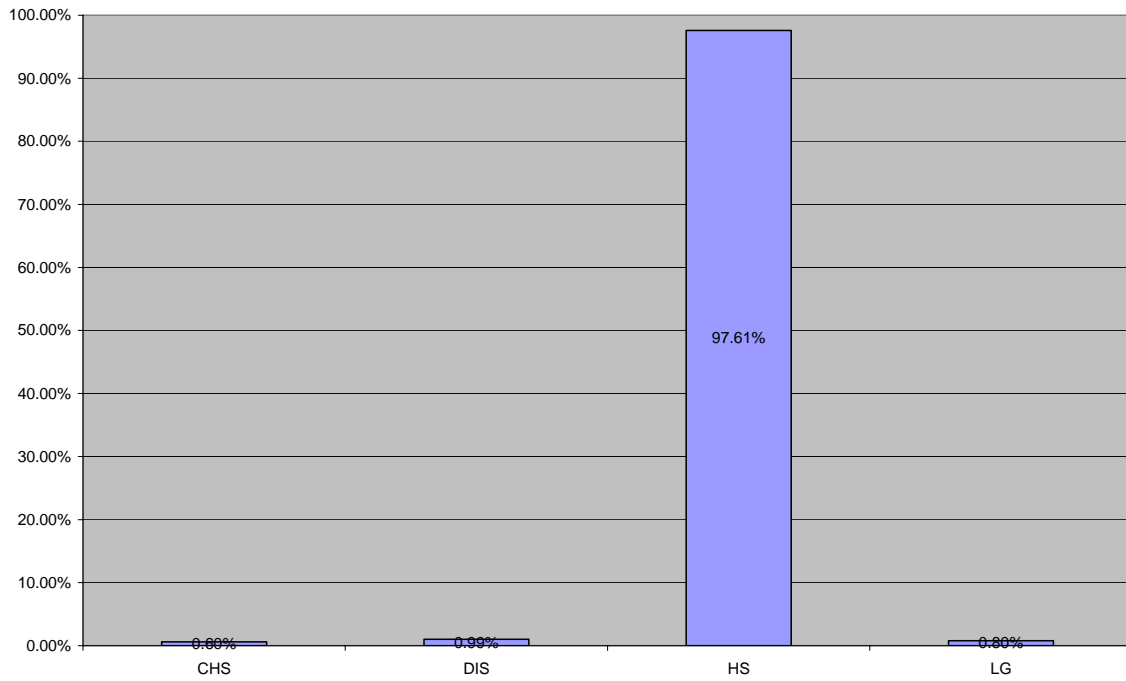


Figure 11 Percentage of total sent and received e-referrals in the Grampians Pyrenees PCP by service type for June of the 2006-07 financial year

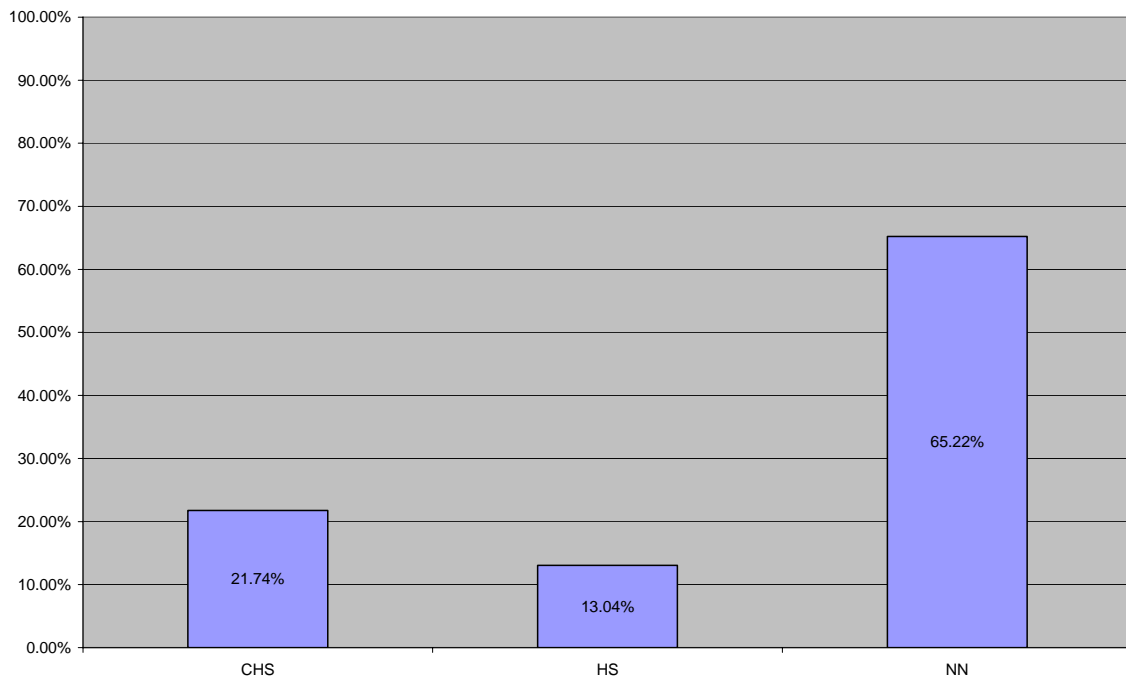


Figure 12 Percentage of total sent and received e-referrals in the Hume Moreland PCP by service type for June of the 2006-07 financial year

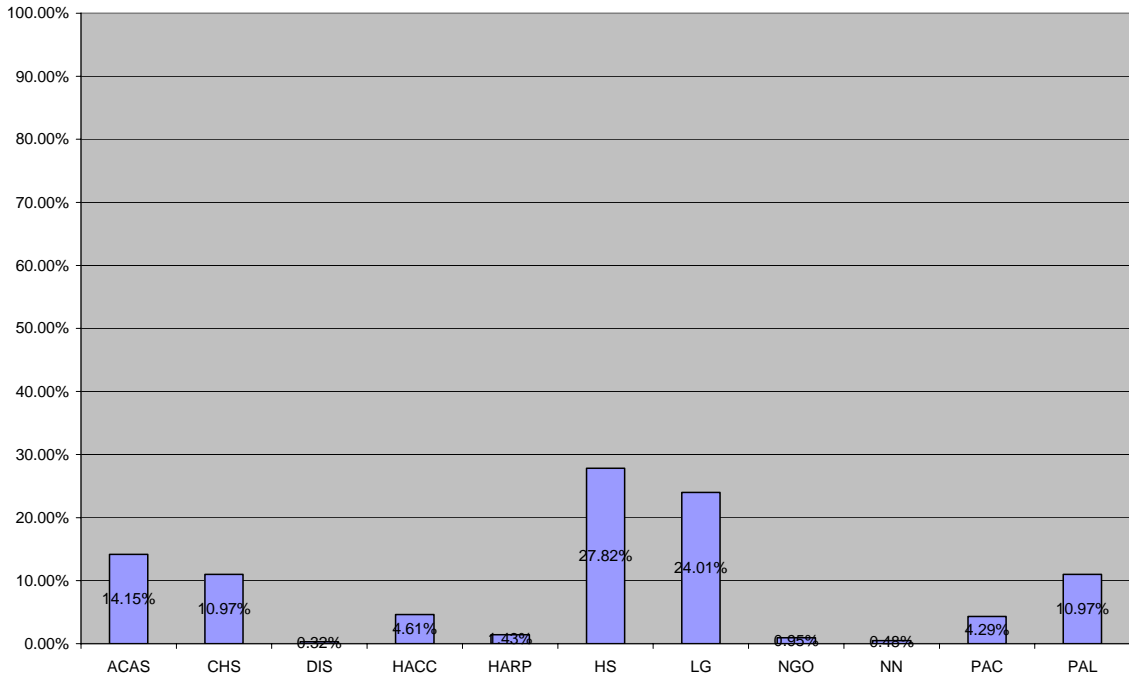


Figure 13 Percentage of total sent and received e-referrals in the Inner East & Outer East PCP by service type for June of the 2006-07 financial year

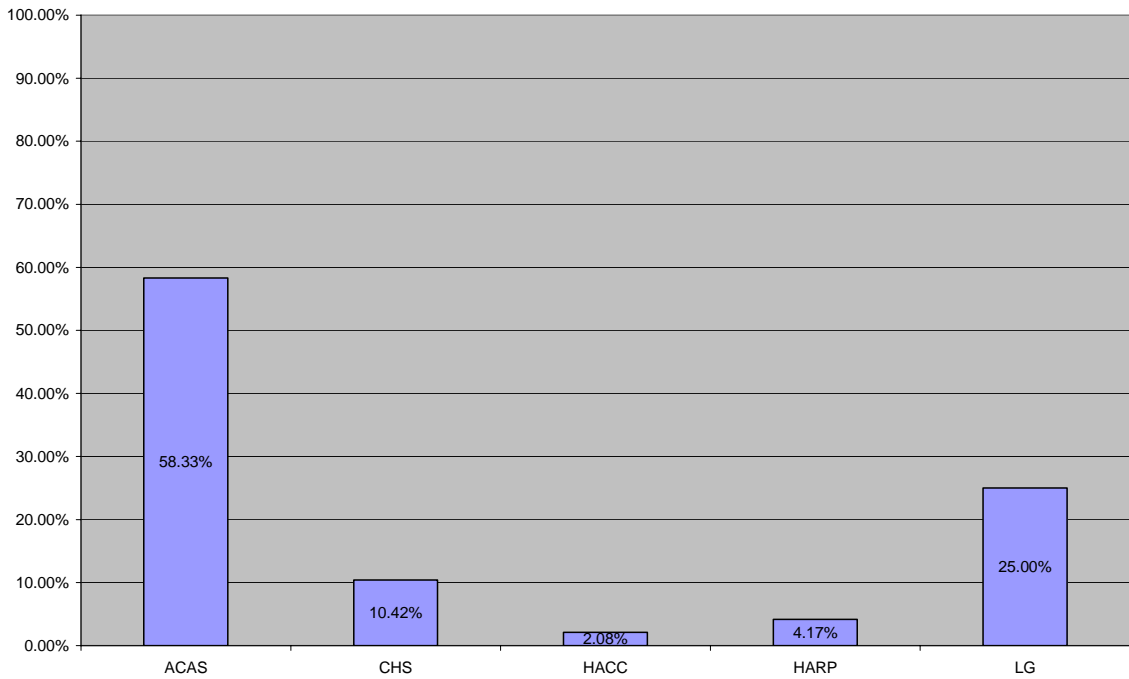


Figure 14 Percentage of total sent and received e-referrals in the Inner South East Partnership in Community and Health PCP by service type for June of the 2006-07 financial year

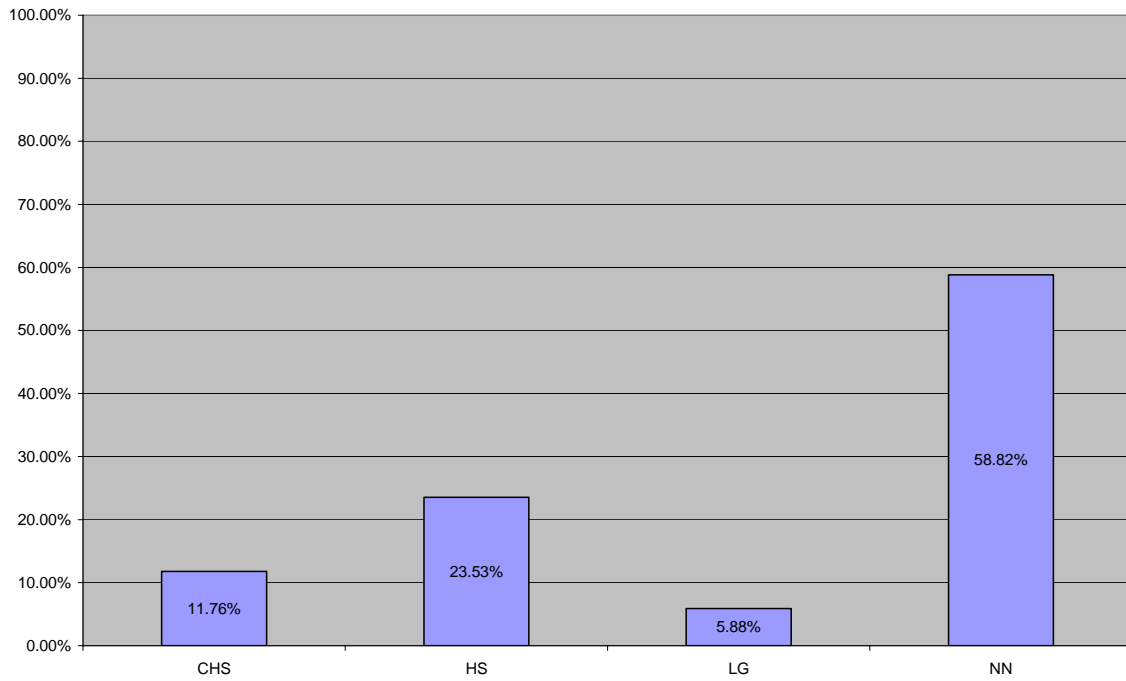


Figure 15 Percentage of total sent and received e-referrals in the Kingston Bayside PCP by service type for June of the 2006-07 financial year

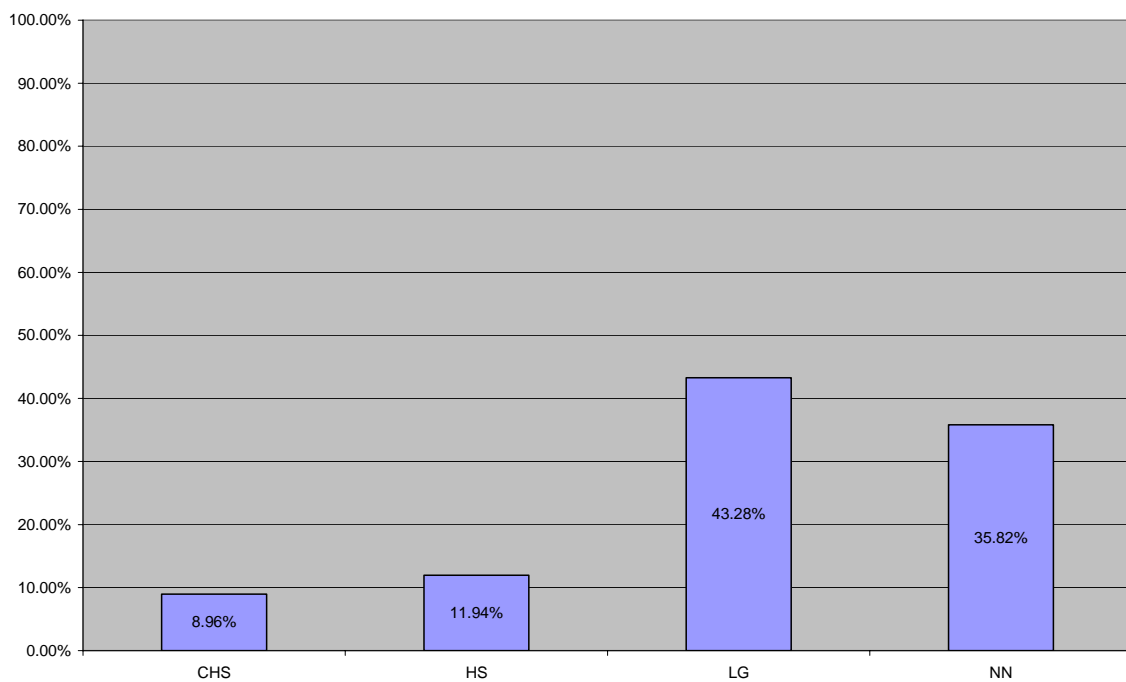


Figure 16 Percentage of total sent and received e-referrals in the Moonee Valley Melbourne PCP by service type for June of the 2006-07 financial year

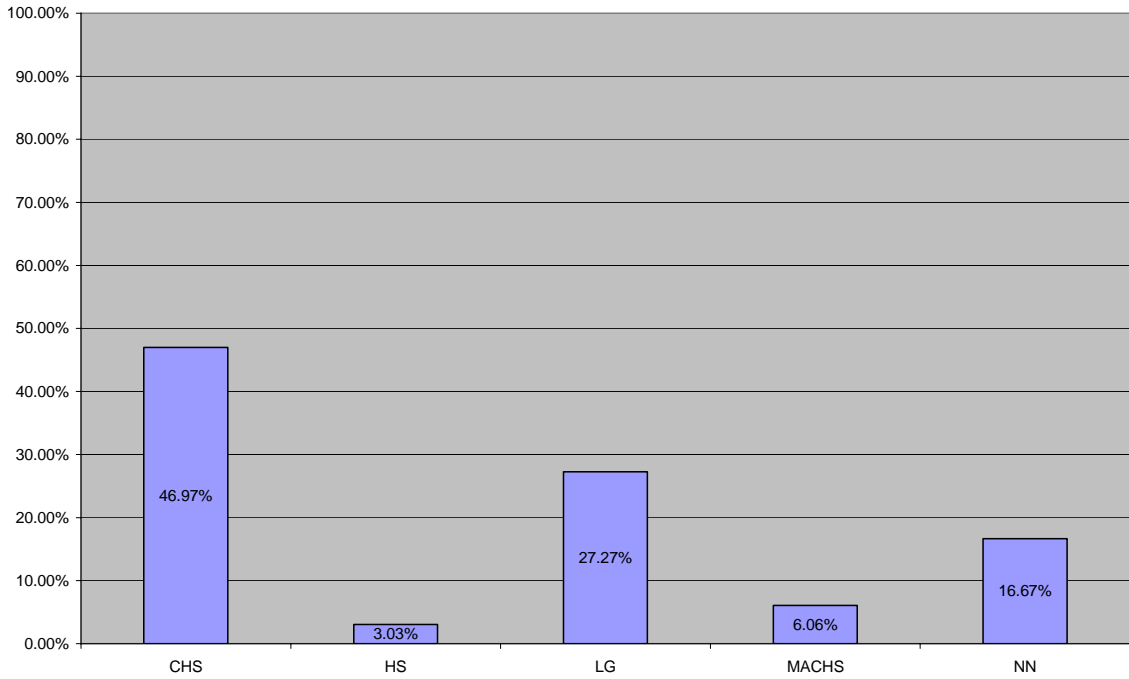


Figure 17 Percentage of total sent and received e-referrals in the North Central Metropolitan PCP by service type for June of the 2006-07 financial year

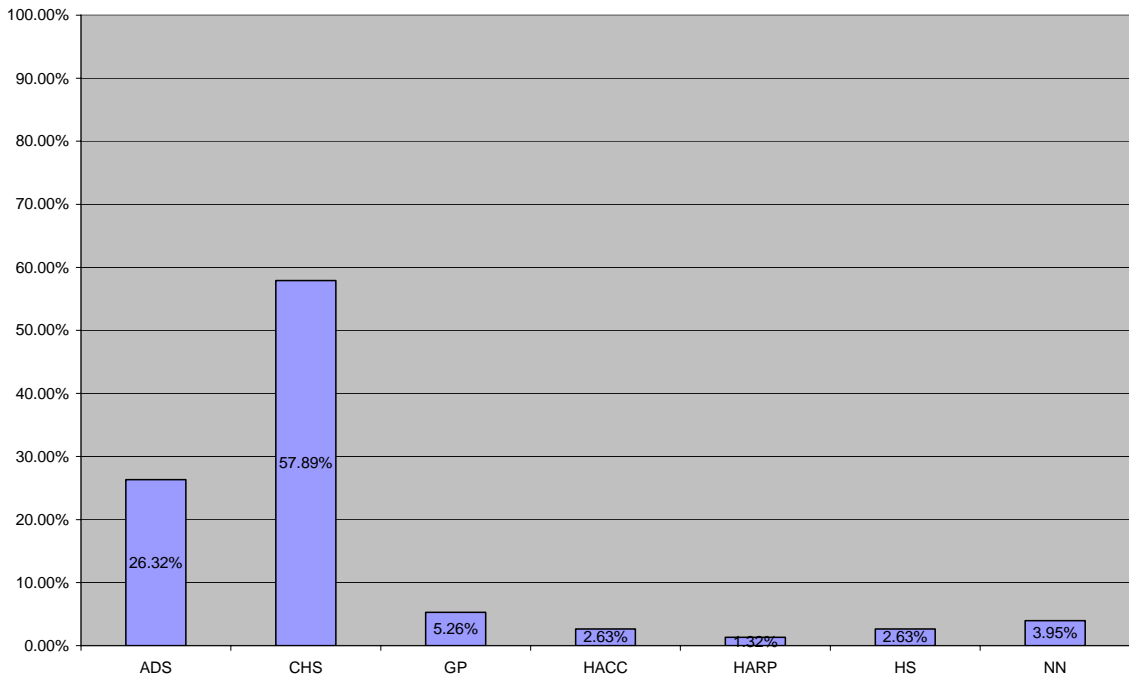


Figure 18 Percentage of total sent and received e-referrals in the Northern Mallee PCP by service type for June of the 2006-07 financial year

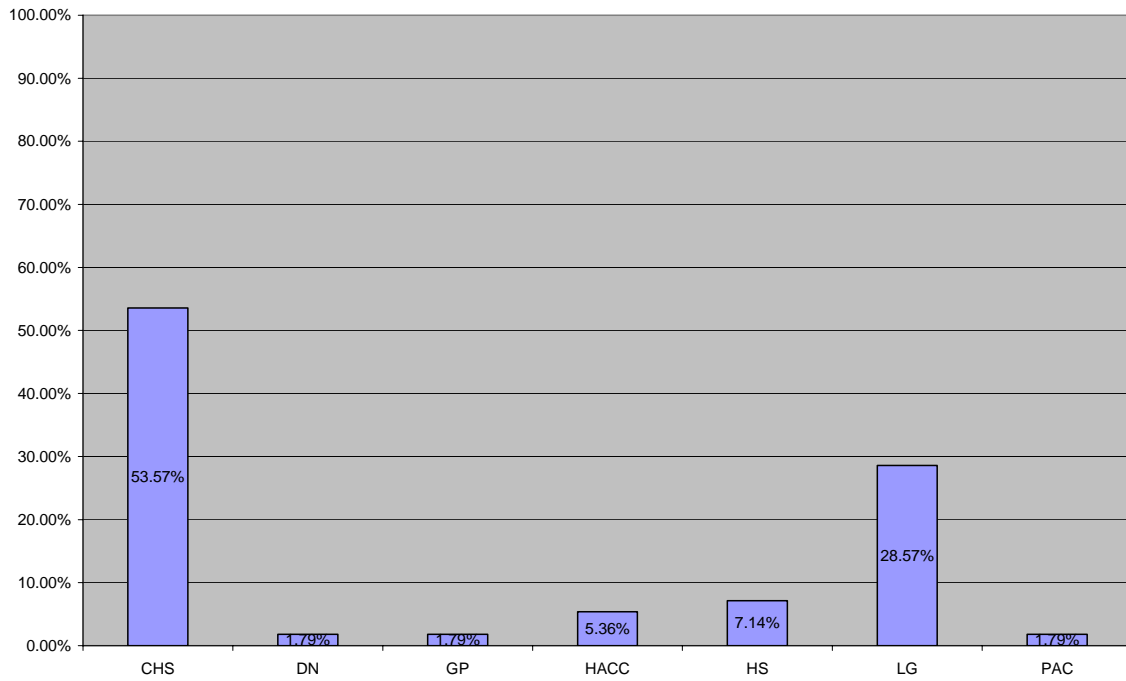


Figure 19 Percentage of total sent and received e-referrals in the South Coast Health Services Consortium PCP by service type for June of the 2006-07 financial year

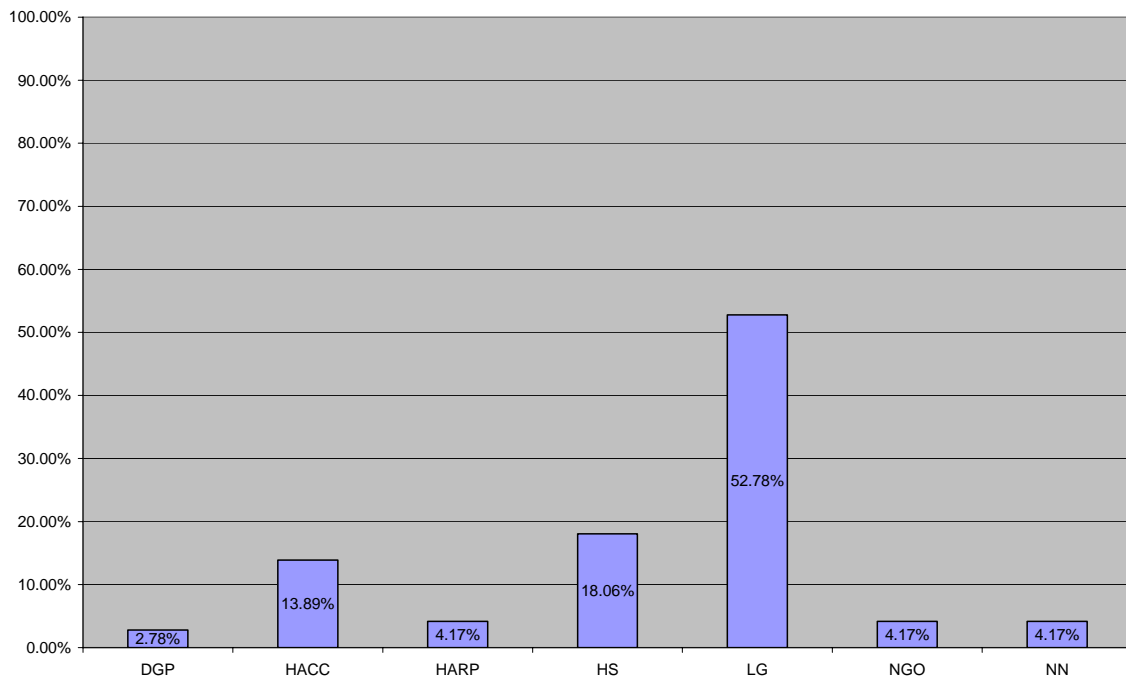


Figure 20 Percentage of total sent and received e-referrals in the South East Healthy Communities PCP by service type for June of the 2006-07 financial year

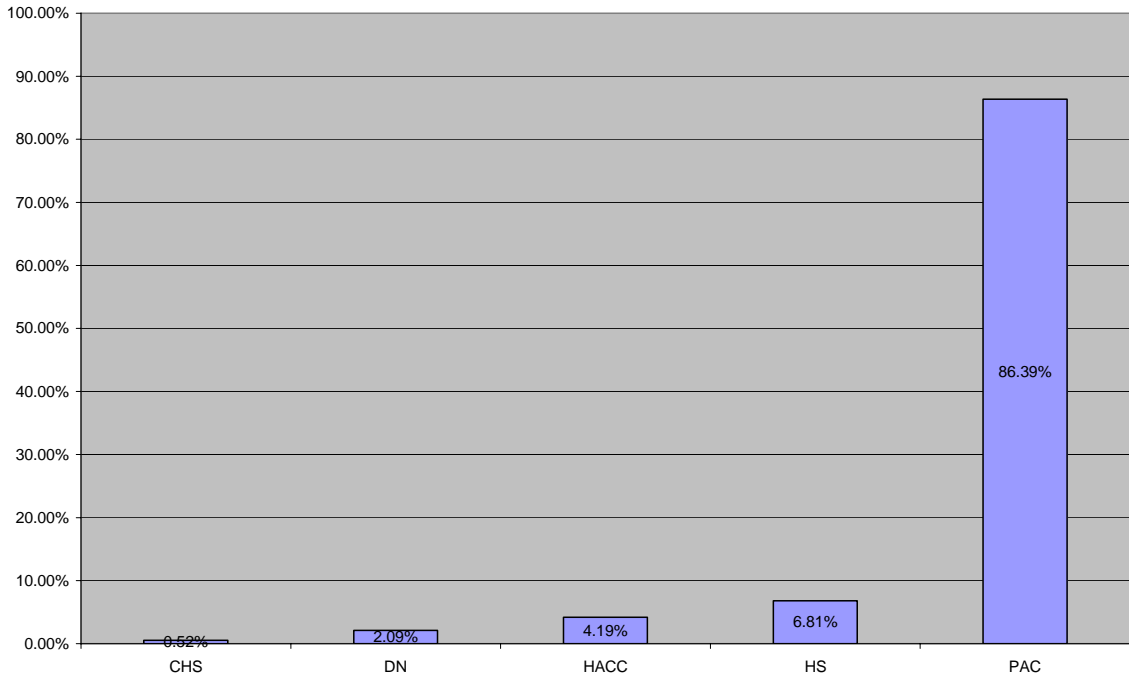


Figure 21 Percentage of total sent and received e-referrals in the South West PCP by service type for June of the 2006-07 financial year

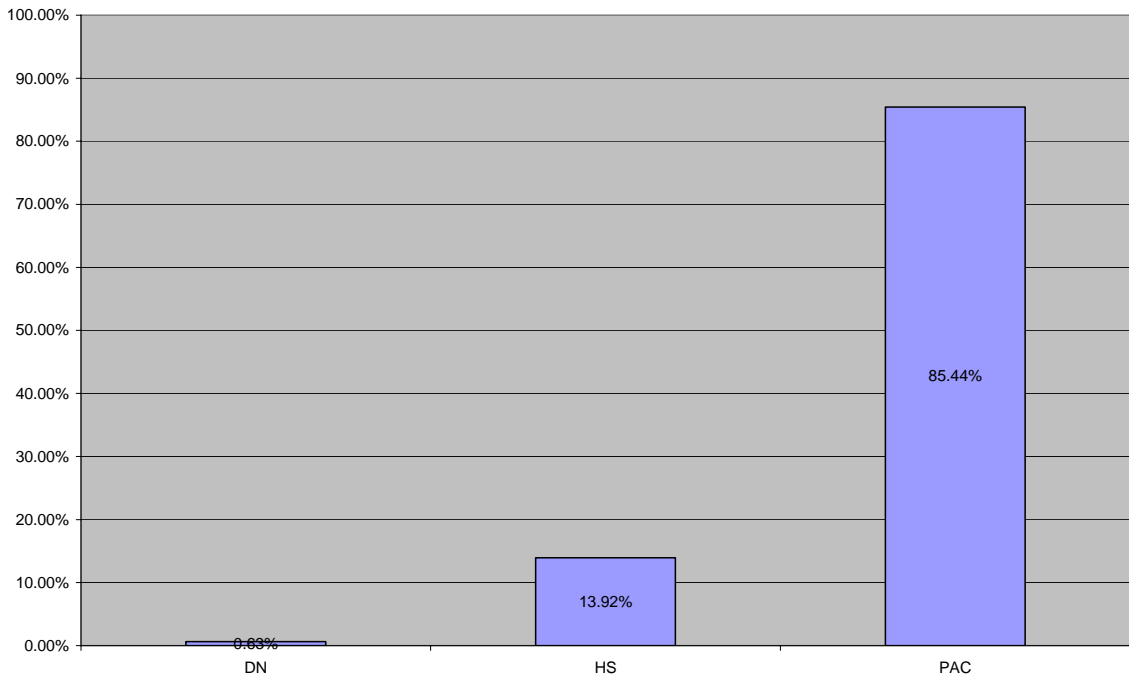


Figure 22 Percentage of total sent and received e-referrals in the Southern Grampians-Glenelg PCP by service type for June of the 2006-07 financial year

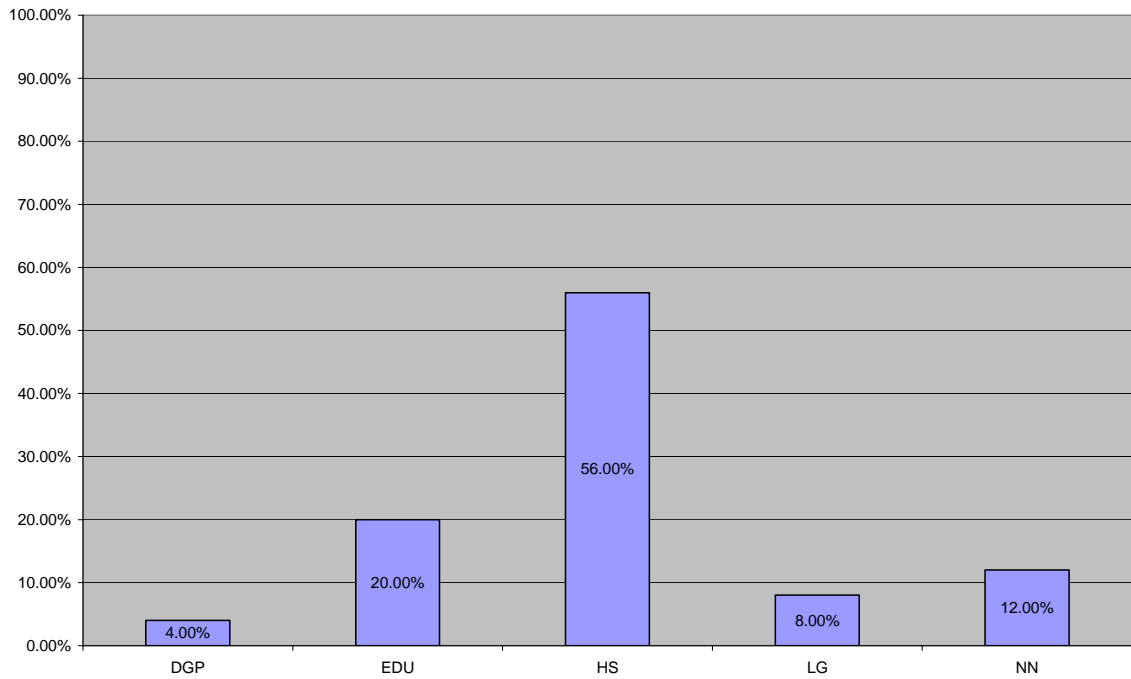


Figure 23 Percentage of total sent and received e-referrals in the Southern Mallee PCP by service type for June of the 2006-07 financial year

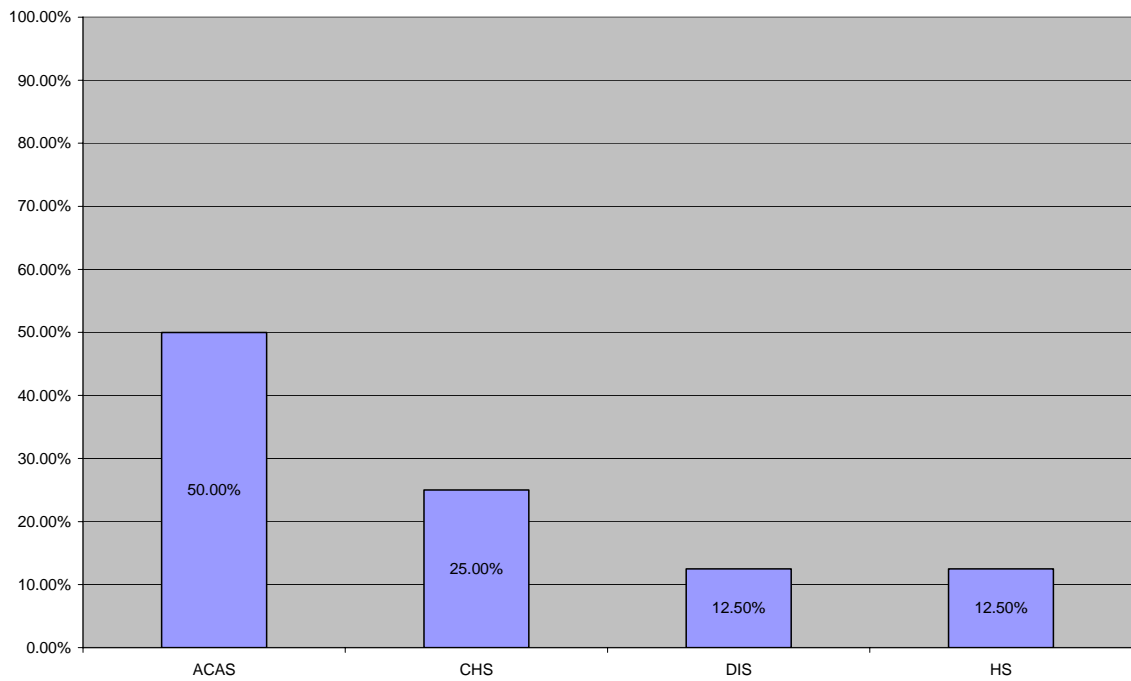


Figure 24 Percentage of total sent and received e-referrals in the Wellington PCP by service type for June of the 2006-07 financial year

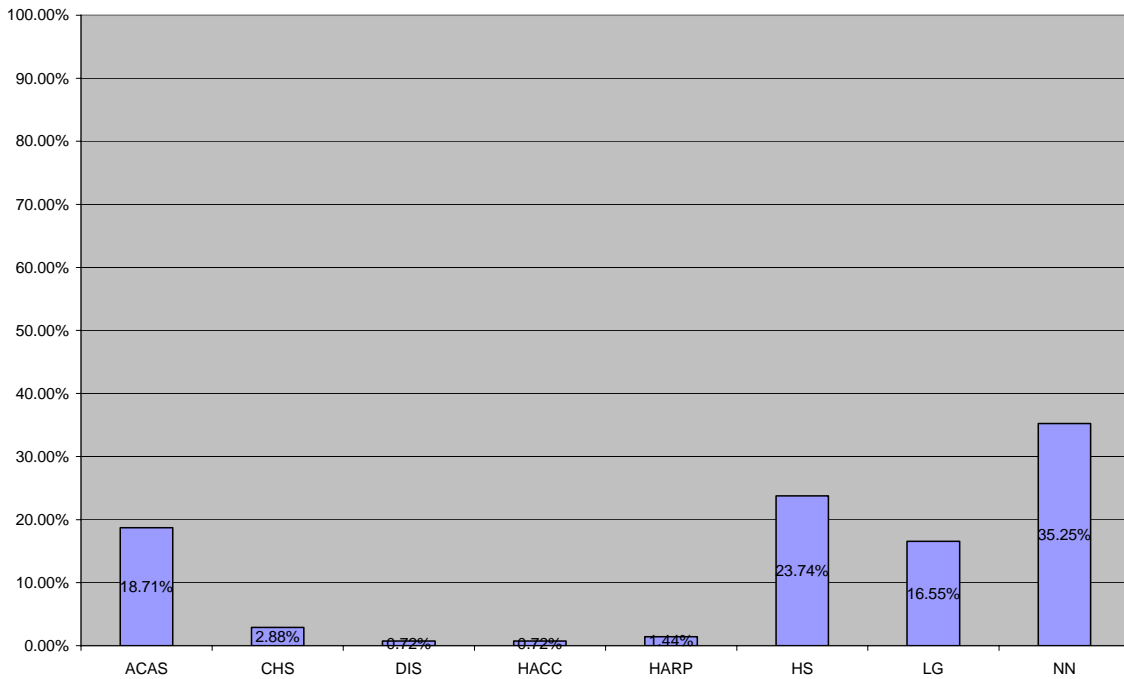


Figure 25 Percentage of total sent and received e-referrals in the West Bay PCP by service type for June of the 2006-07 financial year

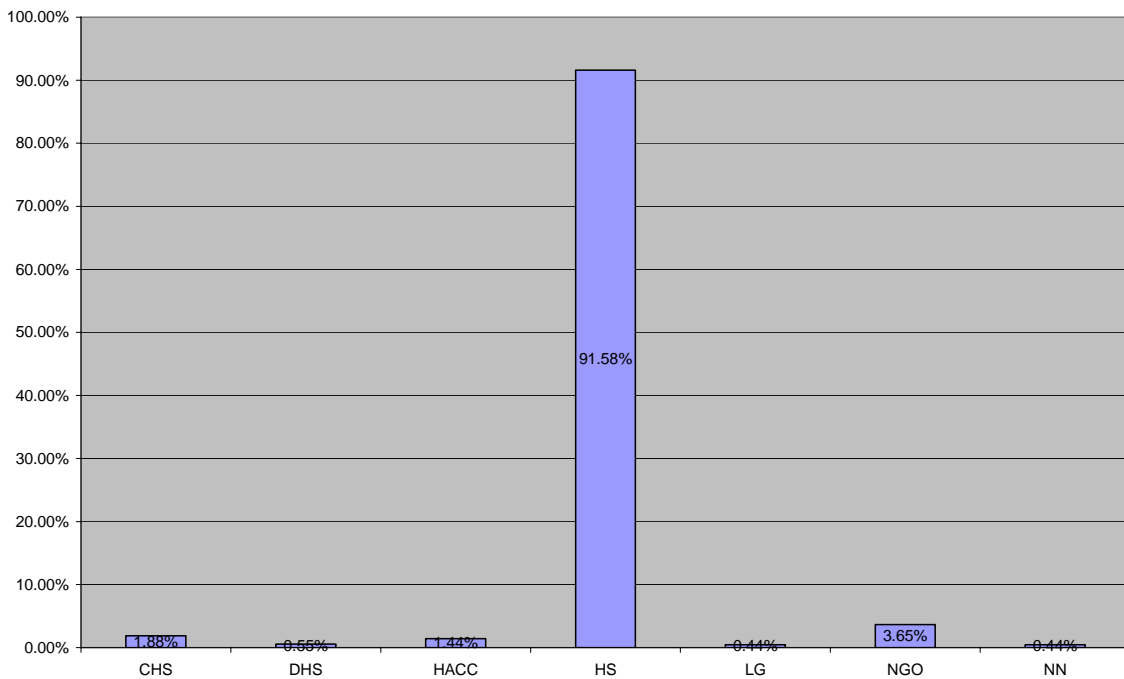


Figure 26 Percentage of total sent and received e-referrals in the Wimmera PCP by service type for June of the 2006-07 financial year

Note: Graphs have not been included for Central Hume PCP, Goulburn Valley PCP, Lower Hume PCP, or Upper Hume PCP as these PCPs are currently implementing their region-wide e-referral system. While e-referral in the PCPs is still in its infancy considerable work has been undertaken in the PCPs to develop and implement good service coordination practice and protocols. E-referral data from the PCPs will be included in the 2007-08 e-Referral Capacity Building Through Primary Care Partnerships report.

An electronic copy of this addendum is available for download from the Primary Care Partnerships publications page.

<http://www.health.vic.gov.au/pcps/publications/>
