

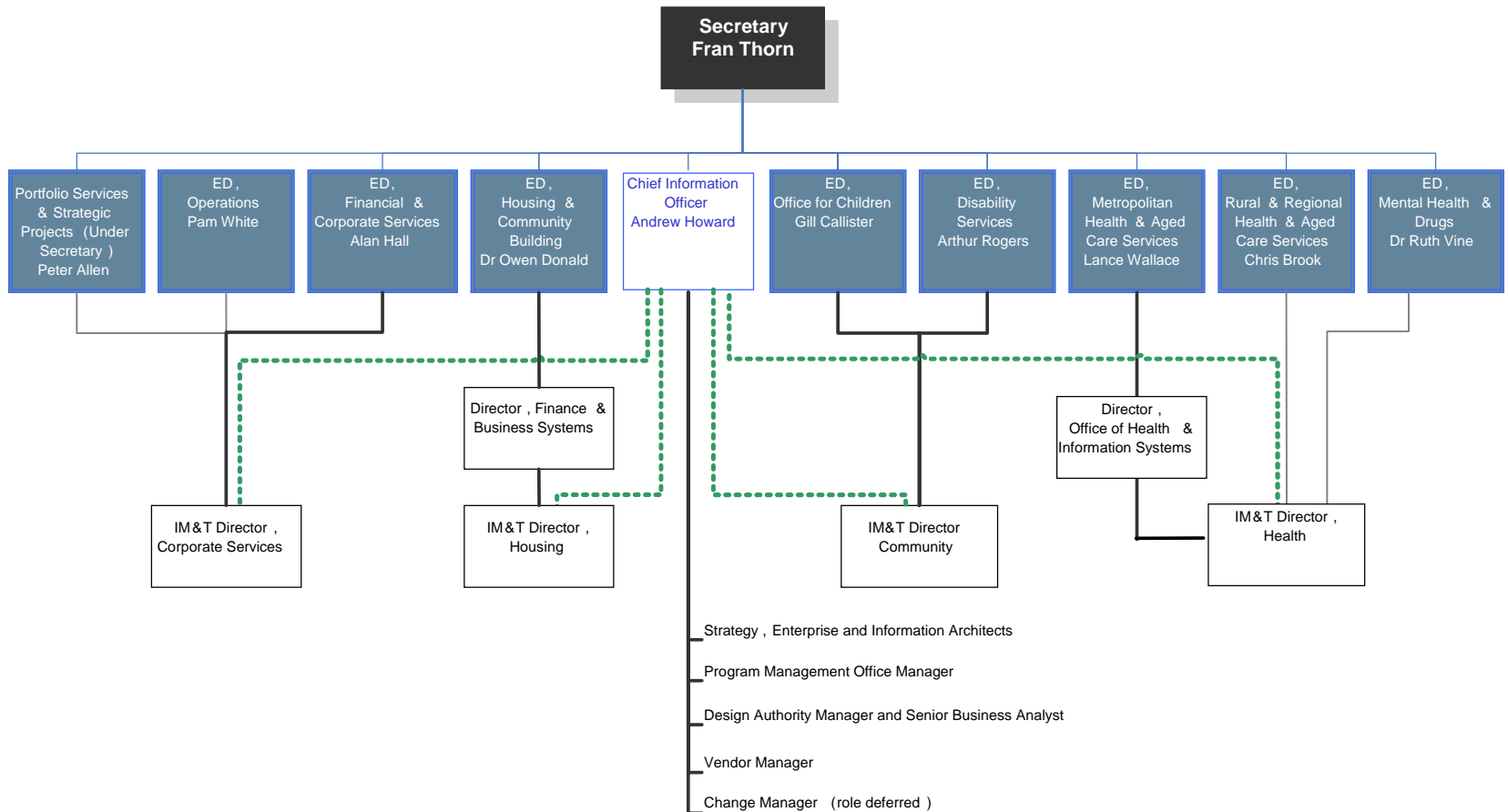


DHS CIO – Andrew Howard
18 June 2007

Key themes

- We need to look more broadly than “health”
- Work together
- Balance right between acute and primary health
- Strong primary health sector
- Sharing information respecting privacy

IM&T capability within DHS

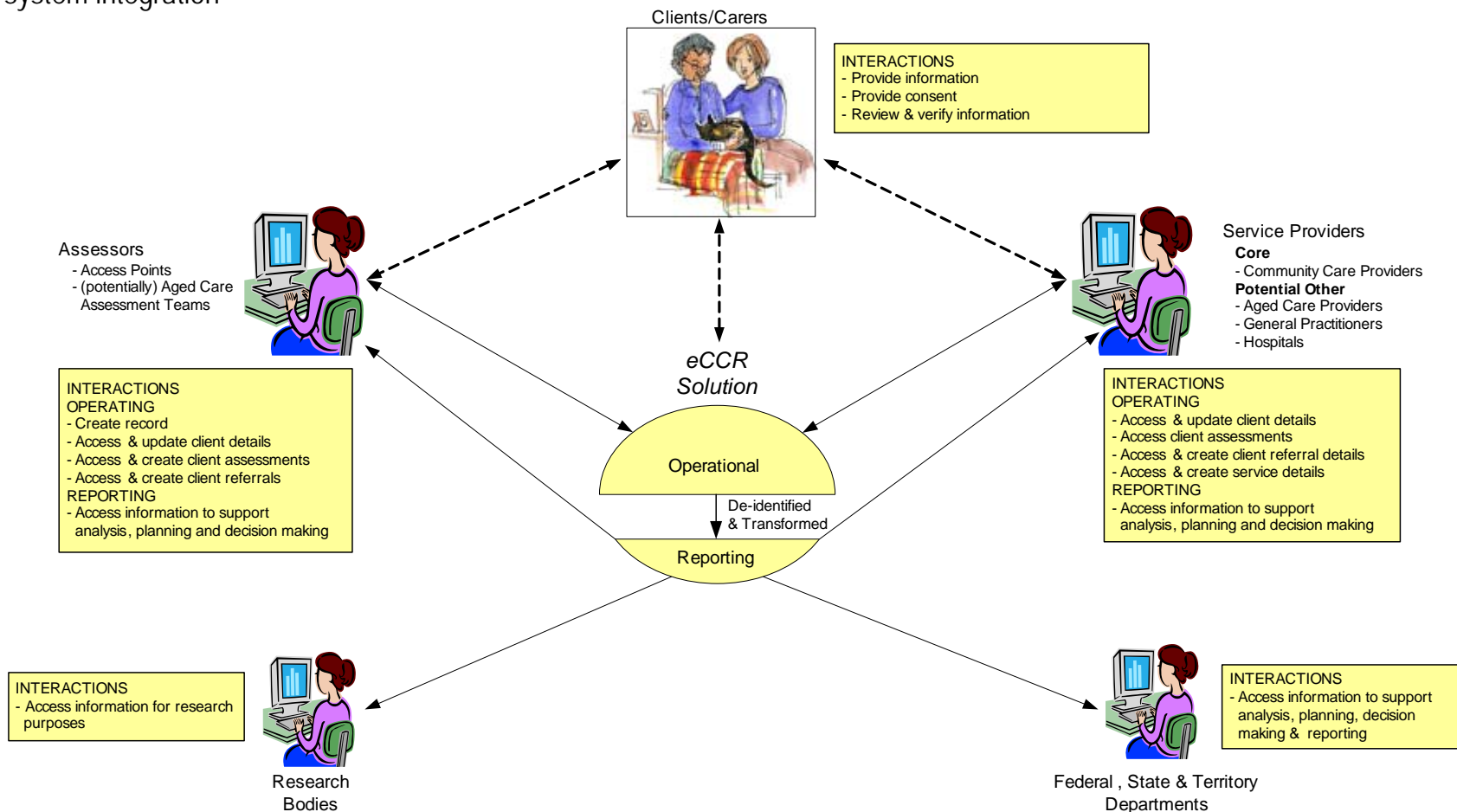


IM&T initiatives

- Nehta and HealthConnect
- HealthSMART
- **eCCR**
- **E-referrals**
- **Human Services Directory**
- IM&T strategy – addressing the Gaps

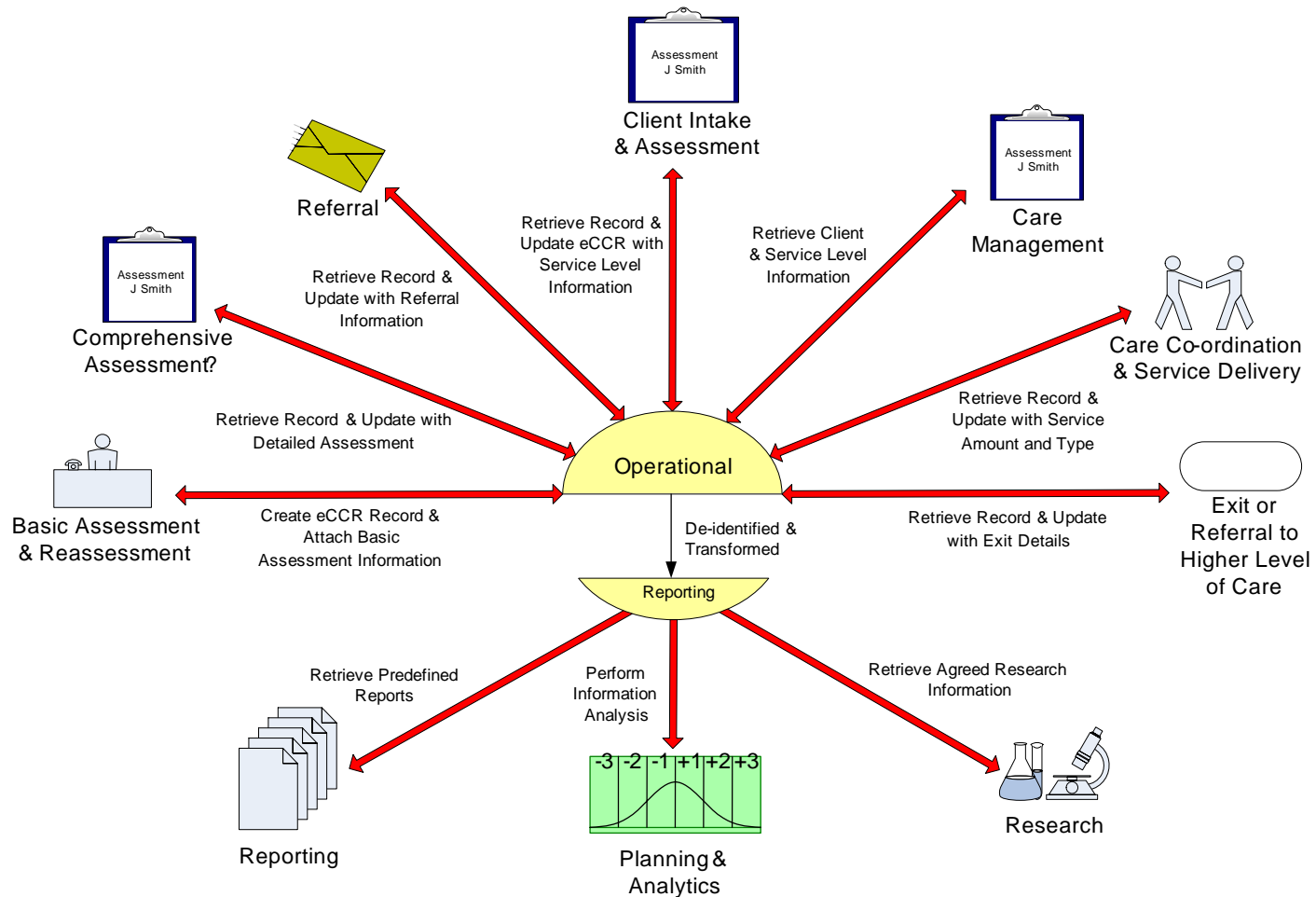
DOHA – eCCR Participant Model

The key participants (users and providers of the information contained in the eCCR) are highlighted in the diagram below. It is envisaged that the majority of the interactions between the participants and the eCCR would be enabled through system-to-system integration



DOHA – eCCR Solution Touchpoints

It is envisaged that the eCCR will provide information to support the following community care processes:



DOHA – eCCR

Potential High Level Information

The following represents information that could potentially be stored by the eCCR solution:

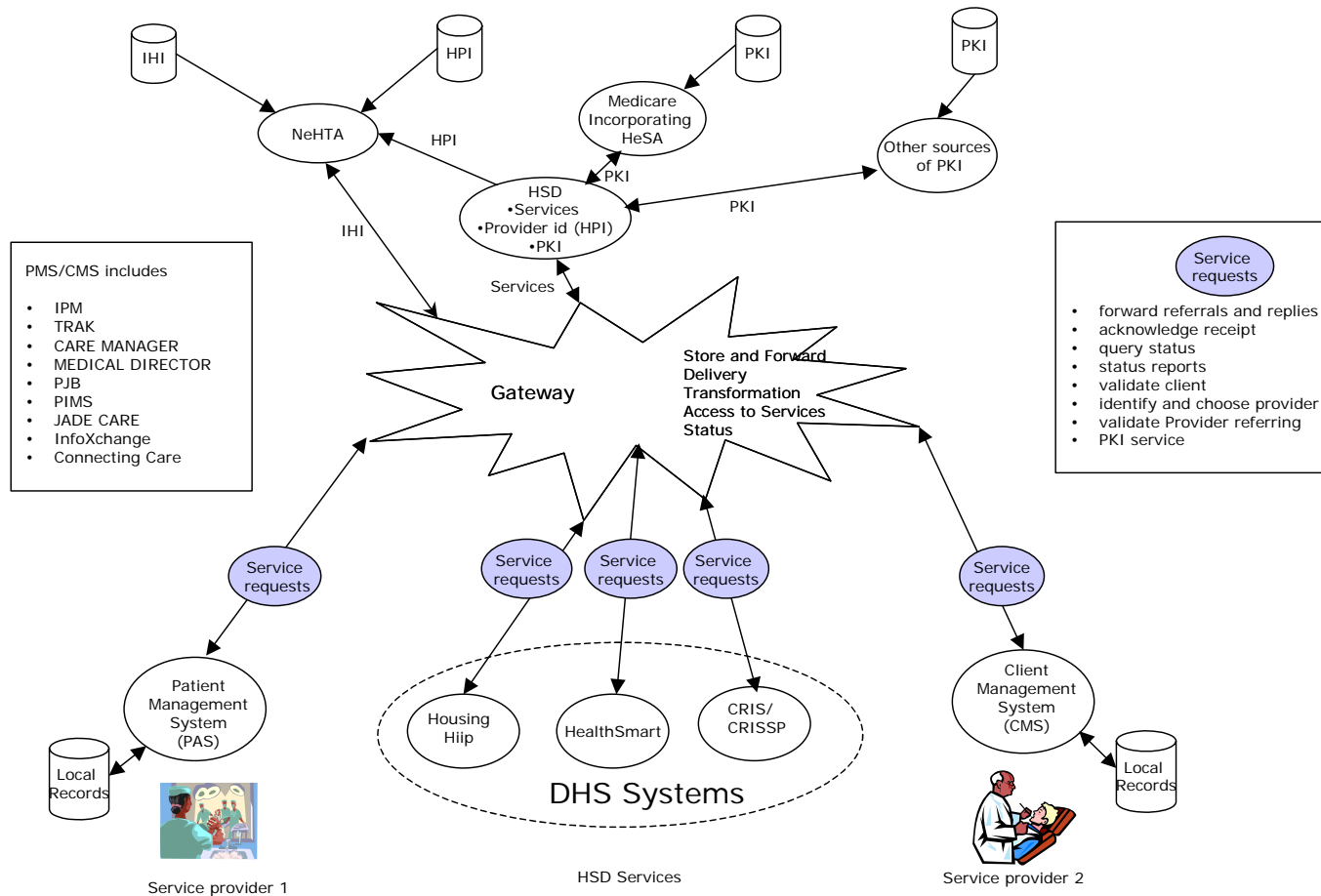
Core Information

Client <ul style="list-style-type: none">- demographics- contact details- leave- carer	Carer <ul style="list-style-type: none">- demographics- contact details- leave- relationship to client		
Consent <ul style="list-style-type: none">- who- when- restrictions	Assessment <ul style="list-style-type: none">- basic- carer- comprehensive	Referral <ul style="list-style-type: none">- referred to- referred for- referral results	Service Assessment <ul style="list-style-type: none">- type- amount- who
Service Delivered <ul style="list-style-type: none">- type- amount- who	Triggering Event <ul style="list-style-type: none">- what- when- notes	Contact <ul style="list-style-type: none">- date- parties involved- outcome	Exit Information <ul style="list-style-type: none">- when- why

Supporting Information

Access Point <ul style="list-style-type: none">- identifier- type- contact details	Provider <ul style="list-style-type: none">- identifier- type- contact details	Other <ul style="list-style-type: none">- identifier- type- contact details	User <ul style="list-style-type: none">- identifier- role & organisation- contact details
--	--	---	---

Connecting the Dots - eReferrals and Human Services Directory



- PMS/CMS includes
- IPM
 - TRAK
 - CARE MANAGER
 - MEDICAL DIRECTOR
 - PJB
 - PIMS
 - JADE CARE
 - InfoXchange
 - Connecting Care

- Service requests
- forward referrals and replies
 - acknowledge receipt
 - query status
 - status reports
 - validate client
 - identify and choose provider
 - validate Provider referring
 - PKI service

e-Referral Overview

Key success factors

- Vision
- Capability and Governance
- Leverage the current Federal and State initiatives
- Be innovative
- A clear (funded) Transition Plan
- Continue to build on the PCPs work to date