



**Rosie Rowe**

**Southern Grampians & Glenelg PCP**



## Leading on from drought....

- Sequel 1 – Immediate response to drought
- Sequel 2 – Planning for Climate Change
- Sequel 3 – Local Action



Leading on from drought.....

Right people – choose well

Pace and lead - wait for the wave to build

Uncertainty – flexible journey

# Sequel 1 – Initial Response

December 06

**Agency Forum**

**Drought Committee – Info Pack + Key contacts**

**Drought Postcards – 1000 farmers**

**6 Community Nights + Forums**

**\$ local**

March 07

**Drought Postcards – 2000 farmers, (20,000 state)**

**Farm Gate**

**\$ DHS Drought funds**

August 07

# Drought Postcard

We are thinking of you -  
take care of yourselves

- Get off the farm for a day – maybe the beach, the mountains or the footy
- Take your family for a walk; groove to some music; read a book
- Contact a friend; invite the neighbours over
- Have a health check-up

# Drought Postcard

DPI Drought Info Line 136 186  
Drought Personal Support Helpline 1300 655 969  
24 hr Kids Helpline 1800 551 800  
24 hr Mensline 1300 789 978

**Local Services:**

Frances Hewett Community Centre, Hamilton 5551 8450  
Portland District Health Community Centre 5522 1180  
Financial Counsellor, Hamilton – 5573 0700

Postage  
Paid

To: The Farm Family

From:





Jet Tucker (Prep) - Casterton Primary School



**Right people** – connected with farming

**Pace and lead** - rapid/practical response

**Uncertainty** – monitor & set course action based on conditions

# Sequel 2 – leading on

August 07

What are we doing on Climate Change?

November 07

Workshop 1

**VCOSS Report**

February 08

Workshop 2

April 08

**Expert Panel**

August 08

**CC Framework published**

Uni Melbourne, RMIT, Uni Calgary

**\$100K**

# Policy Signpost #3

Climate Change  
Adaptation:  
A Framework  
for Local Action

Southern Grampians and Glenelg  
Primary Care Partnership

Rosie Rowe and  
Anita Thomas



[www.sggpcp.com](http://www.sggpcp.com)



## Sequel 2

**Right people** – best information, incl. international

**Pace and lead** – take lead while waiting for locals to catch-up

**Uncertainty** – use mentors

# Sequel 3 – local action

July 08

↑ **community resilience** = ↑ **capacity to adapt**  
**energy efficiency – housing**  
**social capital - 'bridging'**  
**service access**

December 08

**i-Buttons**

**Handbury Fellowship + International mentor**

March 09

**Stories**

July 09

***Service access – wait for the wave to build***

**(Drought Committee plans name change)**

**i-Button workshop – home retrofits**

**(Canada \$85m in 4 communities)**

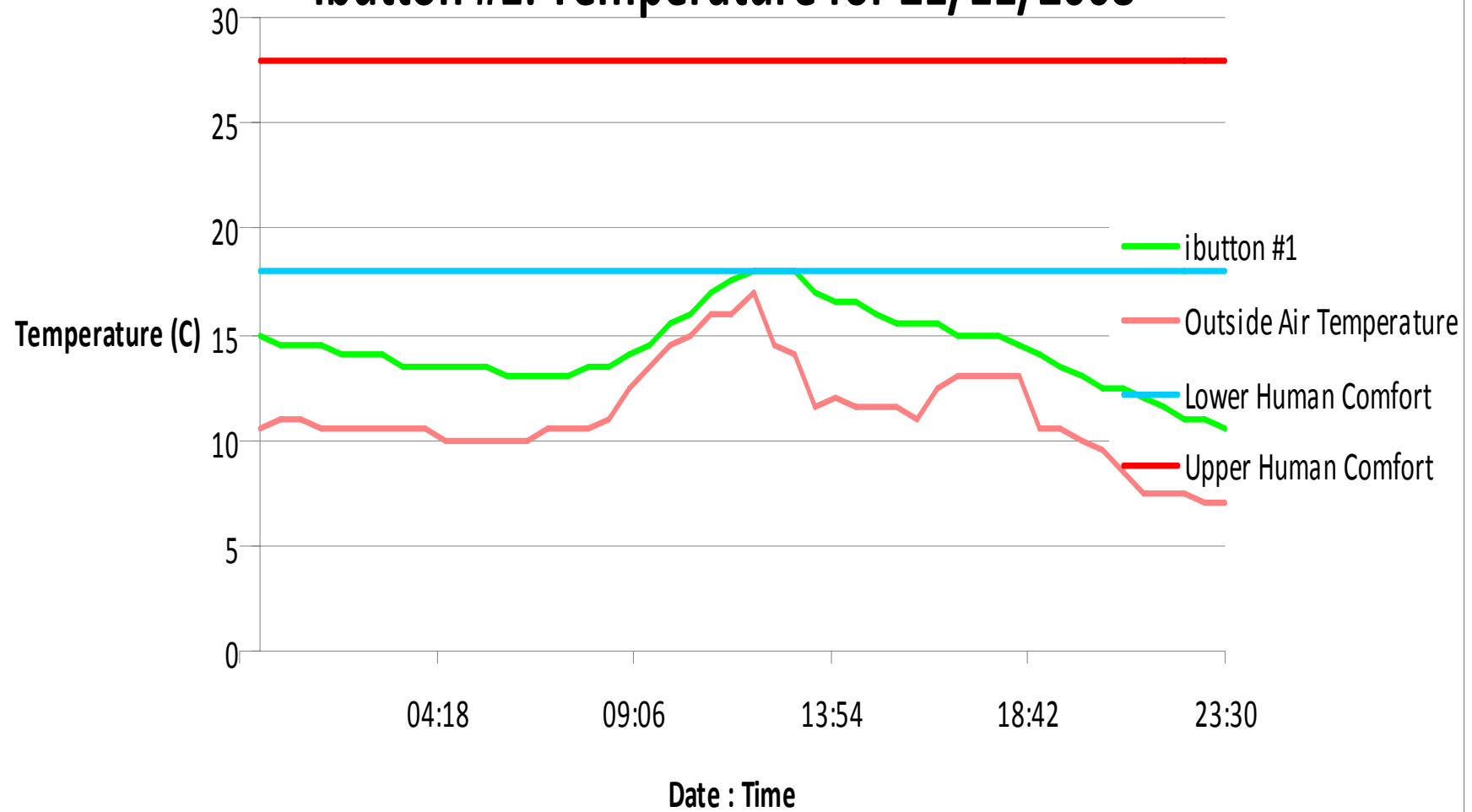
October 09

**Community Stories workshop + Town Model**



# 'The ibutton Approach'

## ibutton #1: Temperature for 21/11/2008









**Right people** – Project Officer, artists, all community

**Pace and lead** – start with practical tools, lead with new ideas

**Uncertainty** – small steps

# Sequel 4 – next steps

October 09

## Research

### 1. Environmental – housing

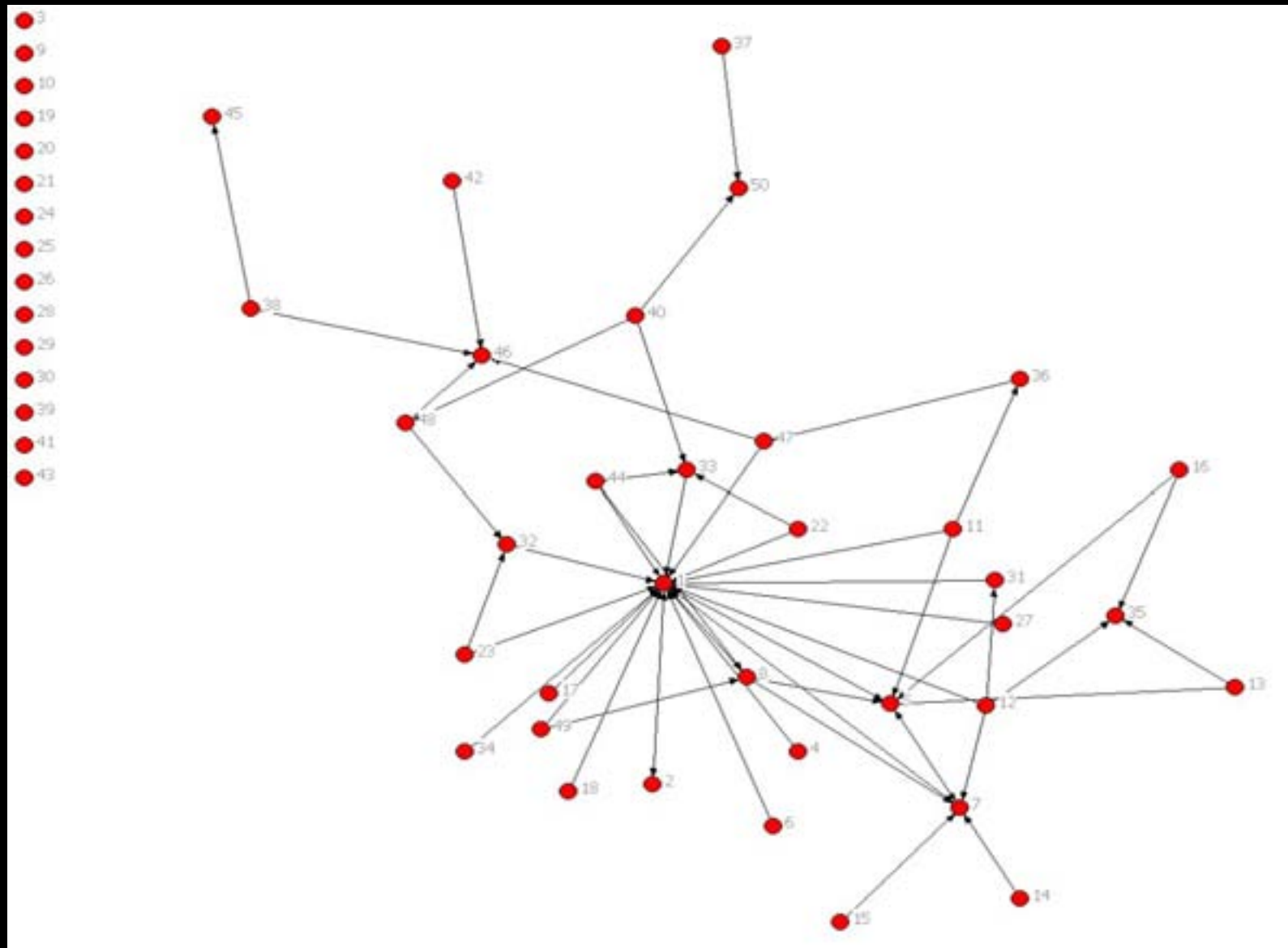
No. climate friendly homes; degrees cooler within homes; behaviour change

### 2. Social capital

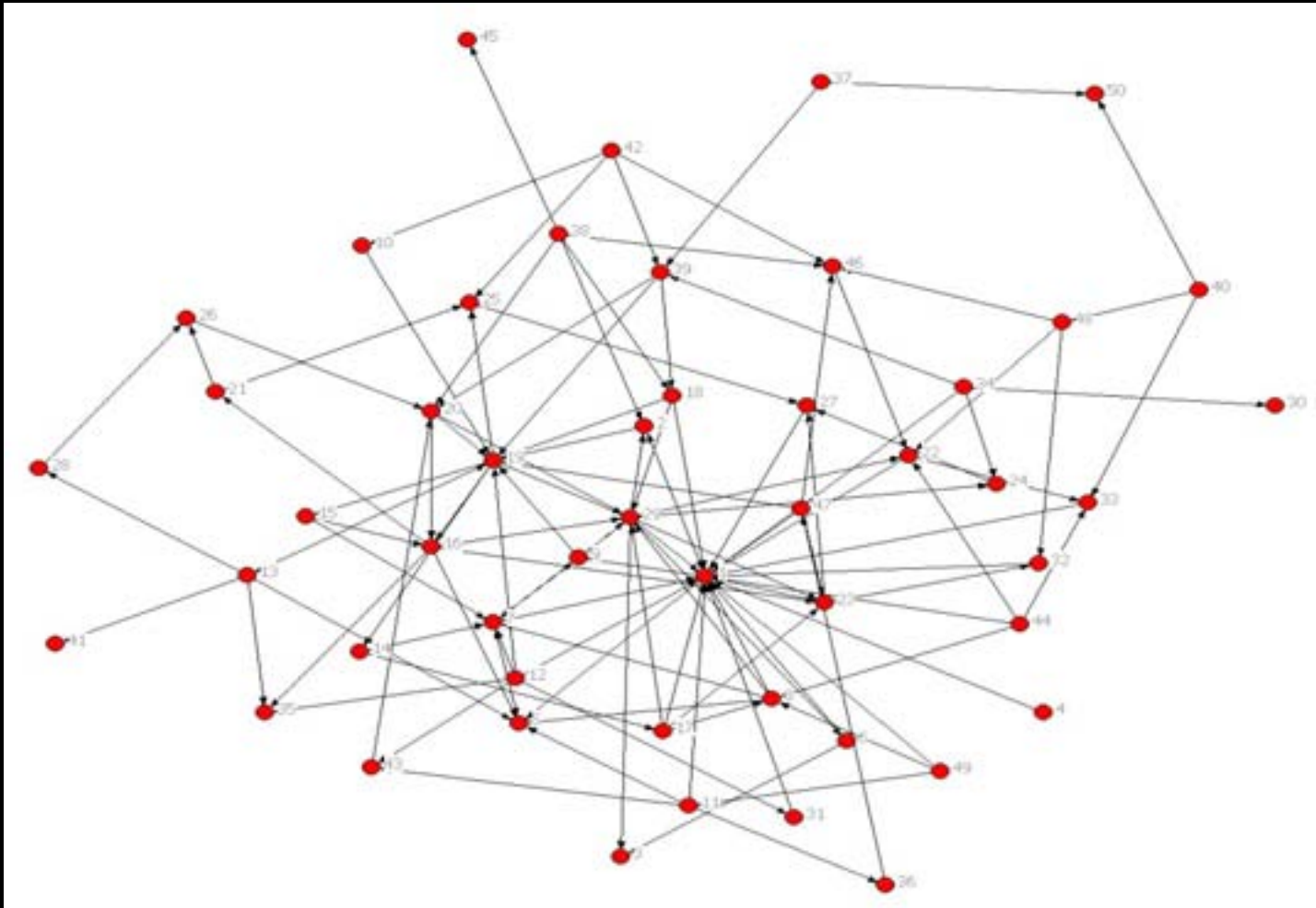
who did we connect with; hidden populations; what assets connect people; increase in diversity of relationships; increase in links external to town

### 3. Service access

availability; access



Community Helping Network - Time 1



Community Helping Network – Time 2

# Conclusion

Leading on from drought.....

- **Right people** – choose well
- **Pace and lead** - wait for the wave to build
- **Uncertainty** – flexible journey



**Rosie Rowe**  
**Western District Health Service**

**[rosie.rowe@wdhs.net](mailto:rosie.rowe@wdhs.net)**

**Southern Grampians & Glenelg PCP**

