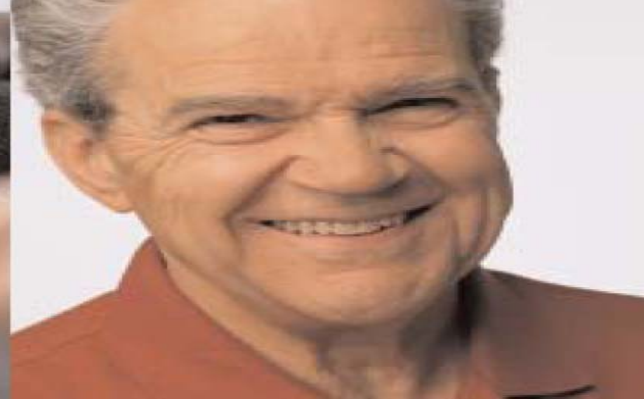


Improving Care for Older people: A policy for Health Services



Susan Race and Brydie Quinn
Sub-acute Ambulatory Care
Continuing Care
Programs Branch
Metropolitan Health and Aged Care Services

What is Pathways Home?

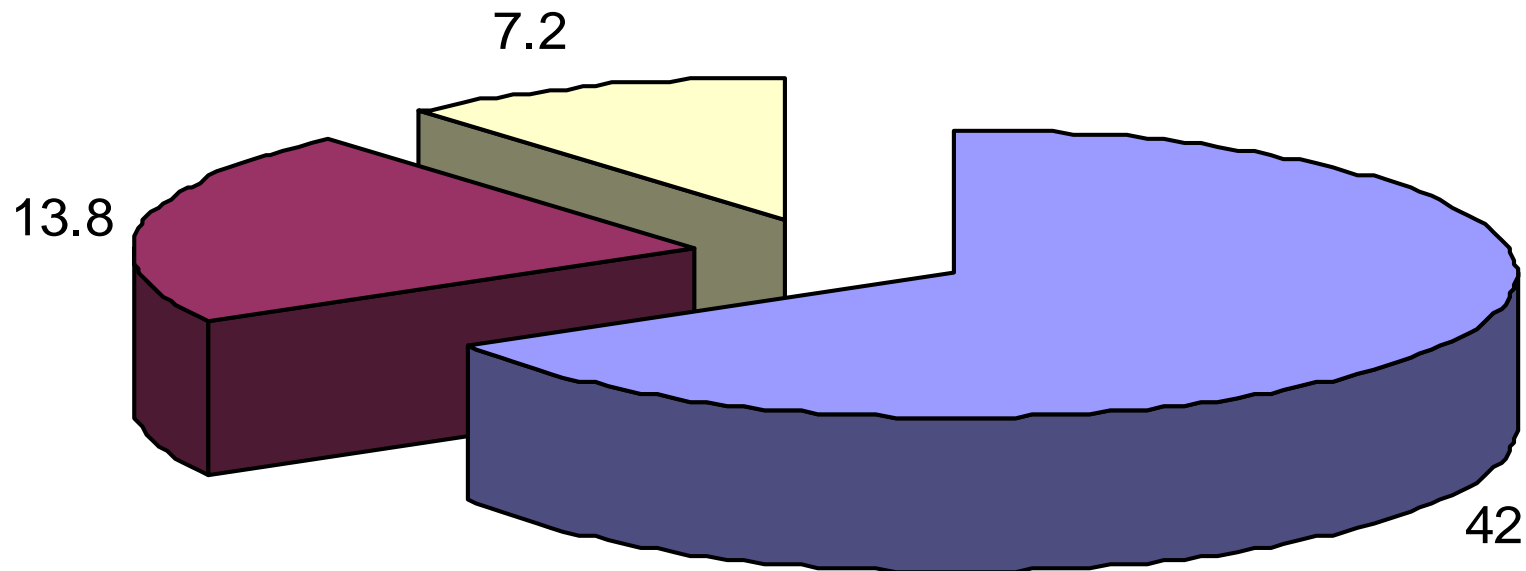


One-off funding provided by the Australian Government to assist the move nationally to a greater focus on the care and services provided to support the transition from hospital to home under the AHCA 2003-08

Pathways Home Program (\$63 M)



Proposed Expenditure 2003-08 (\$ million)



■ Facility Expansion ■ Service Infrastructure ■ Workforce Development

Facility expansion & upgrade



- **Total \$42 million**
- \$24 million - metropolitan area
- \$18 million - rural and regional areas
- 14 capital projects

Service infrastructure



- **Total \$13.8 million**
- Rehabilitation equipment
- IT systems
- Tools and instruments
- Mattress replacement

Workforce development



- **Total \$7.2 million**
- Centres Promoting Health Independence
 - To assist in culture change
- Training
 - Specific care needs of older people
 - Processes and protocols
- Enhanced practice models



Supporting wellness



Centres Promoting Health Independence



Centres Promoting Health Independence



Philosophy of Centres:

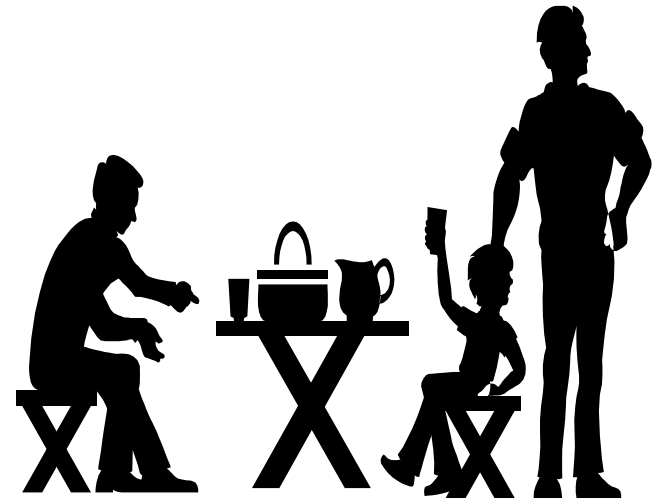
- Person-centred care
- Refocussing culture
- Specific care needs
- Physical environment
- Training and development
- Partnerships and networks

Centres Promoting Health Independence



Out-reach role:

- Person-centred Community Resource
 - Diagnostic services
 - Assessment services
 - Information resources
 - High profile, easily accessible

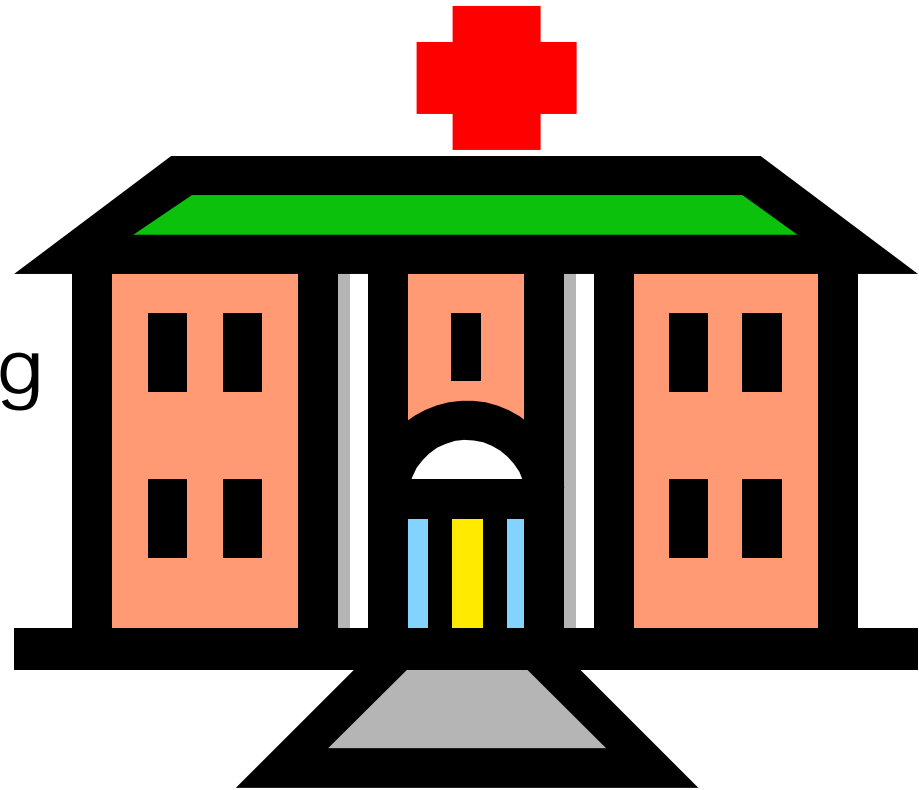


Centres Promoting Health Independence



In-reach role:

- Resource for acute sector
- Education and training function
- Central point in regional network



Centres Promoting Health Independence



- Inpatient services
- Ambulatory care services
 - Community rehabilitation
 - Centre based
 - Home based
 - Specialist Assessment Services

Centres Promoting Health Independence



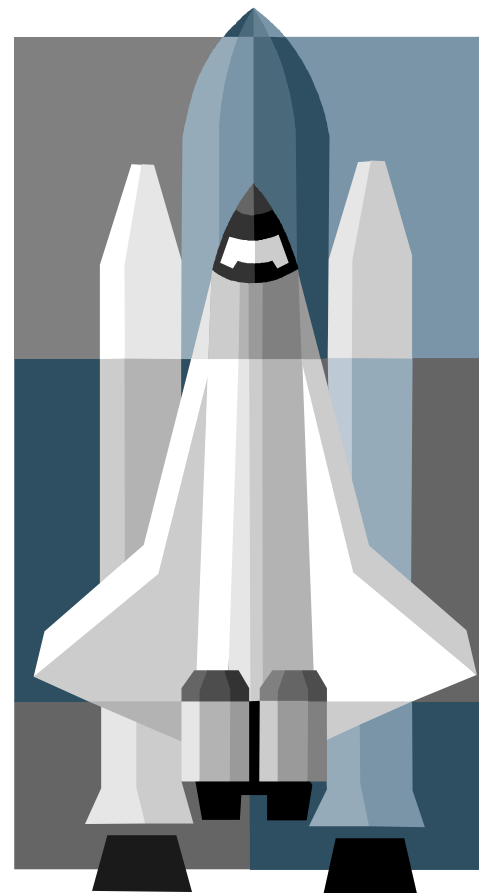
Co-located, where possible with:

- ACAS
- PGAT
- PADP -Equipment
- Ongoing community support providers
- Carers centres/Seniors resource centre
- Case management/brokerage programs

Achieving the change



How do we change
the way we care for
older people?



Aims



- Strong person-centred approach
- Understand the complexity of older people's health care needs
- Integration
 - within Health Services
 - between Health Services and ongoing support services in the broader community

Refocussing culture



Person-centred approach
to care:

- Education and training
- Person-centred care project
- Involving older people as participants in care



Specific care needs

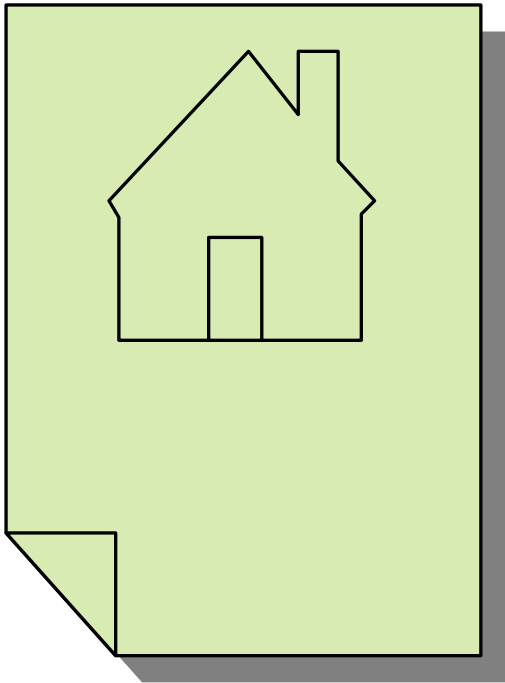


To be addressed through:

- Examining evidence base
- Staff training and development
- Activities to measure and improve quality of care
- Information for older people



Physical environment



- Project to identify principles
- Tools to be developed and implemented
- Receiving input by older people
- Sharing of best practice

Training and development



Key to refocussing culture:

- Education
- Upskilling
- Mentoring
- Placement programs

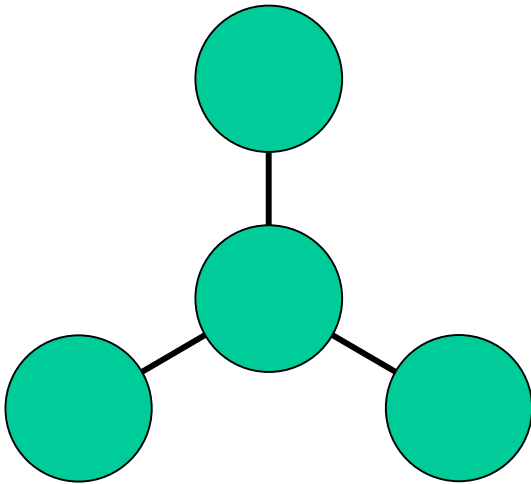


Partnerships and networks



Formation of relationships:

- Within Health Service
- With providers in region
- With other CPHIs in a State-wide network



How will this be achieved?



- Funding Health Services (with CPHIs)
\$300,000 over two years
- Champions
- Sharing of knowledge
- Pathways Home initiatives

Your input



- Engage executive sponsor
- Engage key implementation contact
- Participate in a community of practice
- Collaborate in state-wide projects
- Reporting on outcomes

