

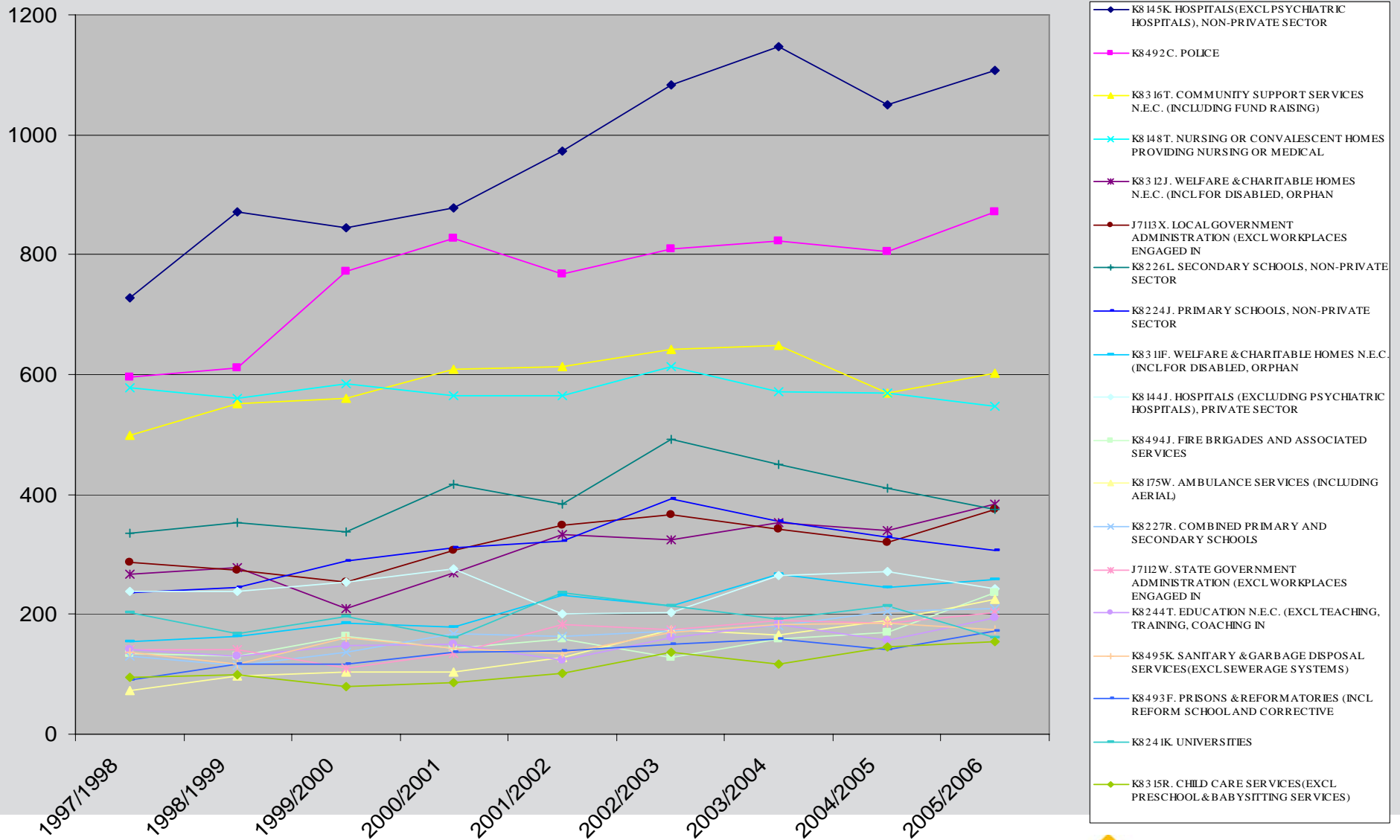
OHS Managers' Forum

Kath Canham

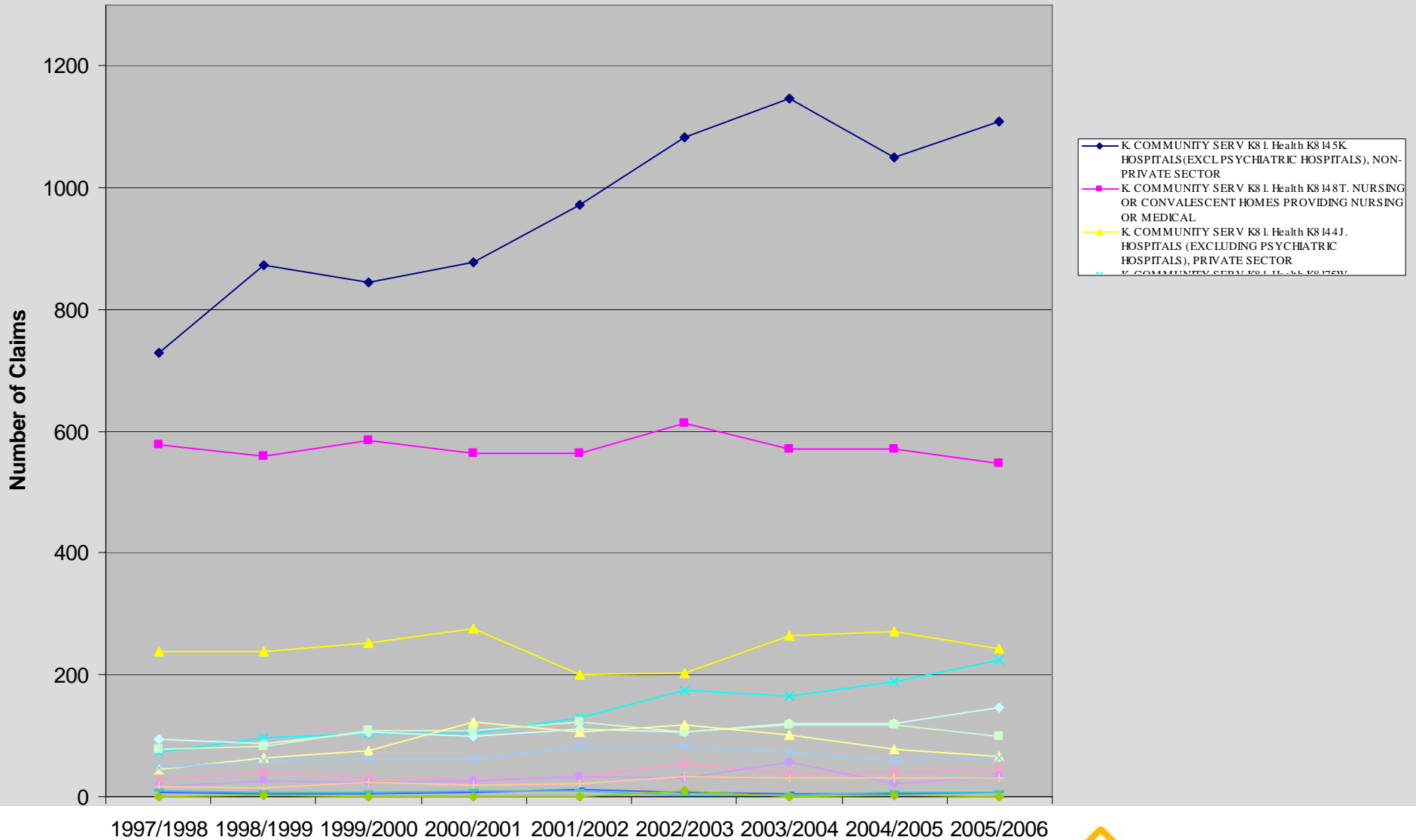
Executive Client Manager – Health

Jennifer Chellew & Cheryl Thomas
Project Officers, Health & Aged Care

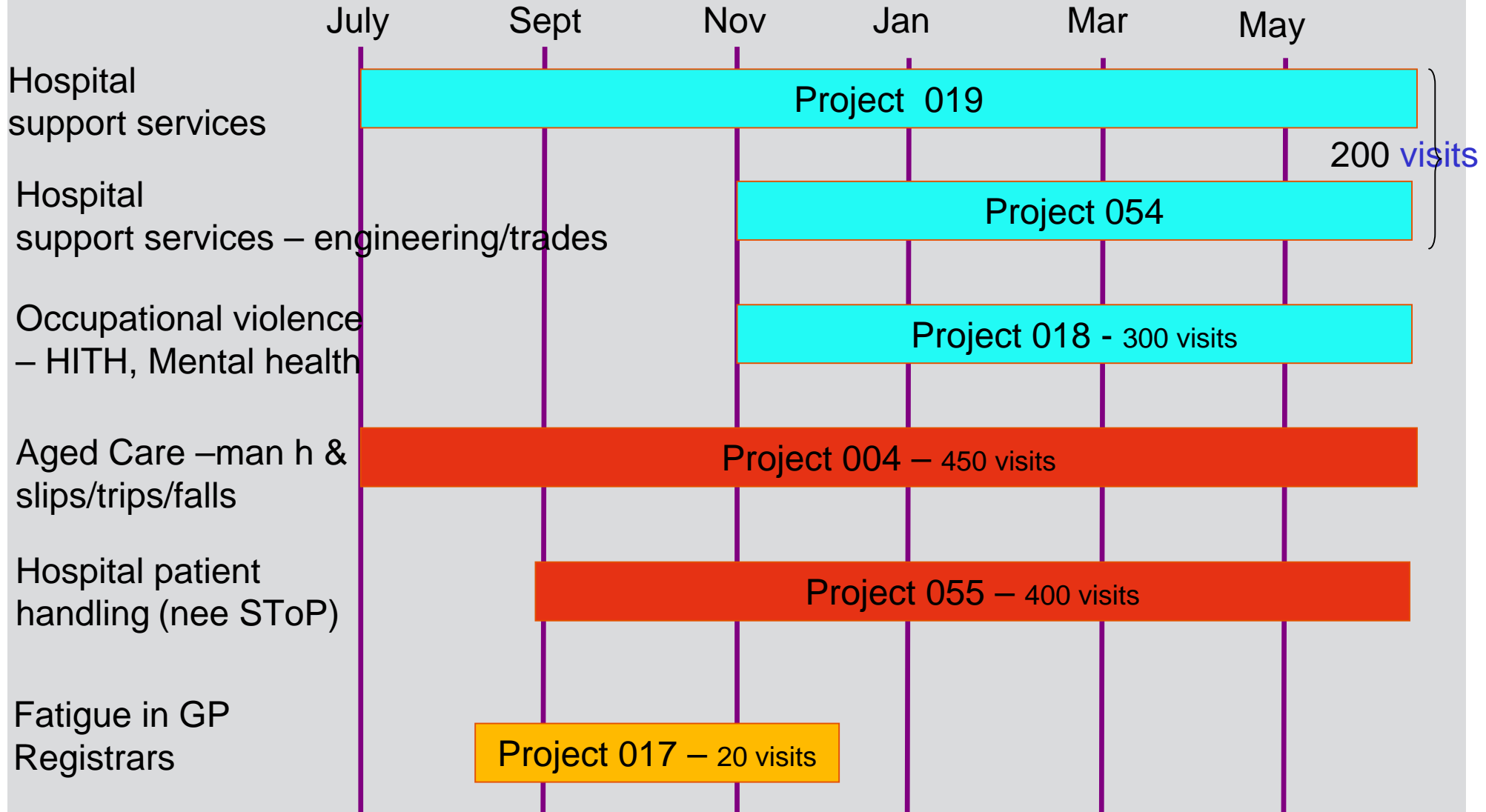
PSCS Standard Claims by WICCODE 1997/98 - 2005/06



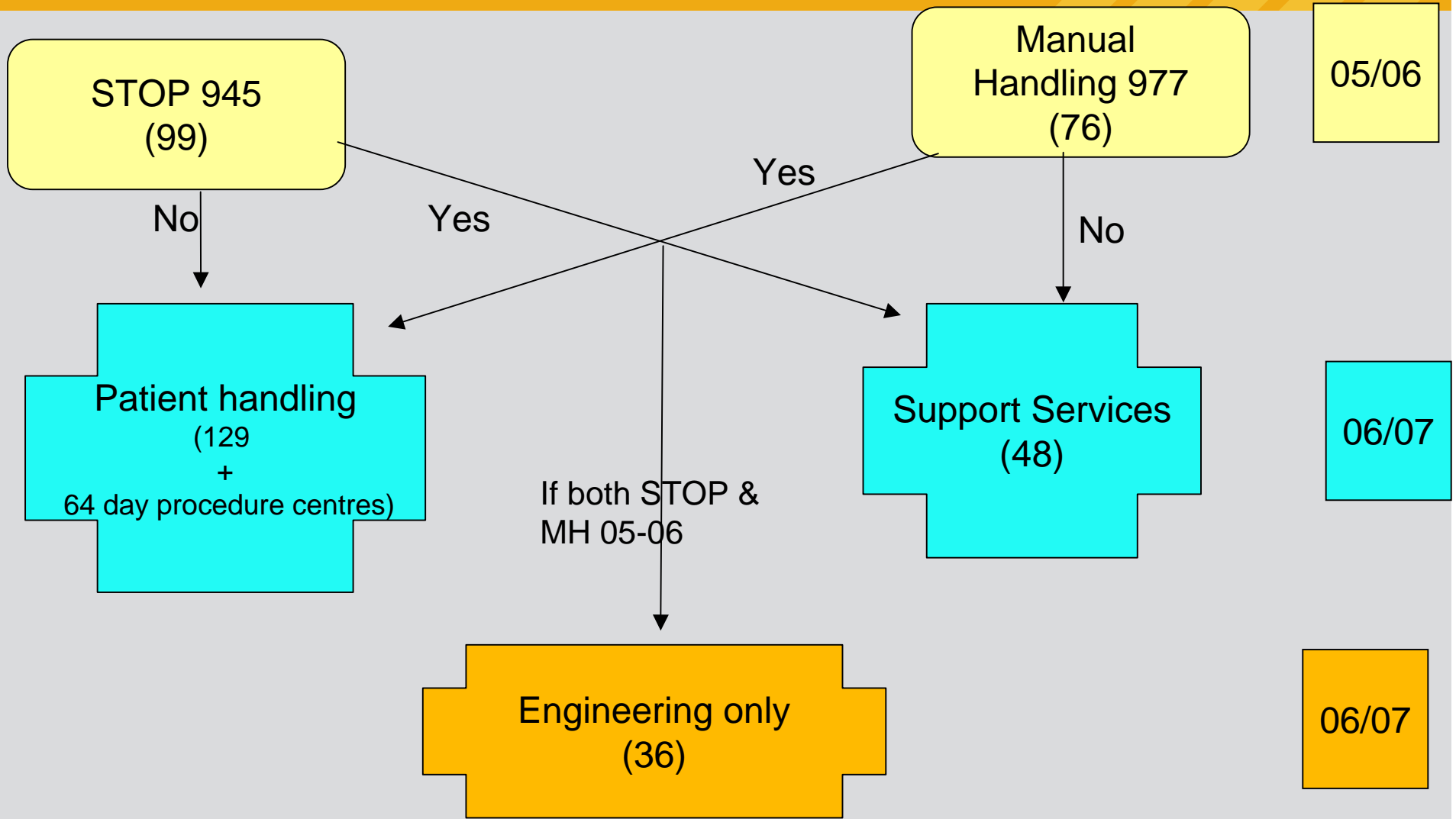
K81 Health Claims 1997/98-2005/06



Health & Aged Care field interventions for 2006/07



Allocation of hospitals for 06/07 Projects



Claims in health

- Over 70% of claims in hospitals are MSD
- Over 60% of claims in residential aged care are MSD
- Since 2004/05 in hospitals
 - >No increase in MSD claims in public and private hospitals
 - >Negligible change in MSD claims for nursing staff in public and private hospitals
 - >Negligible change in MSD claims for nursing staff in 11 hospitals targeted in 04/05 SToP
- In aged care - over 800 claims per year
 - >Over 70% of claims are to nursing and 'client care' occupations

Patient Handling in Hospitals Project (PHIHP)

Similarities of 'Patient Handling' to 'SToP'

- Addressing variety of manual handling risks from patient handling
- Limited to wards
- Utilising (updated) 'Safe Transfer of People' for most tasks
- Addressing
 - risk assessment systems
 - risk controls
 - equipment and furniture
 - design

Differences of 'Patient Handling' to 'SToP'

- Includes day-procedure centres and bush nursing hospitals
- Promote **new** *Transferring People Safely*
- Several wards to be visited – no focus on orthopaedic, post surgical and general medical wards (SToP limited to 5 wards)
- Inspectors deal with no-lift coordinators and trainers
- Address same tasks plus 'limb treatment'
- Slightly modified inspector prompt tool
- Recent inspector training in handling bariatric patients
- Recording of plans for new buildings
- Advice provision for s28 design duties.

Ten patient handling tasks

- Rolling/turning patient over in bed (also in SToP)
 - Sitting a patient up in bed (also in SToP)
 - Transferring a patient from bed to chair/bed or from chair to chair/bed/toilet (also in SToP – 2 questions)
 - Standing up or sitting down a patient from a chair or bed (also in SToP – 2 questions)
 - Transferring a patient to or from trolley to bed (also in SToP)
 - Walking a patient (also in SToP)
 - Showering a patient (also in SToP)
 - Raising/lifting a patient from the floor (also in SToP)
 - Pushing/pulling patient equipment (also in SToP)
 - Massaging patient limbs (new task)
-
- NB. Handling bariatric patients is to be considered as part of above tasks.

Interim findings from SToP (hospitals)

From SToP FOCUS checklists

- Findings from interim data
- Vast majority of wards have *assessed* 12 risks to a ‘considerable’ or ‘great’ extent
- Vast majority of wards have *controlled* 12 risks to a ‘considerable’ or ‘great’ extent
- On average, hospitals did not assess and control risks for two of the tasks as well as for remaining 10. They are:
 - > handling bariatric patients
 - > pushing/pulling patient equipmentperformed mostly to a ‘considerable’ extent

Notices from SToP (hospitals)

41 Improvement Notices issued to date

- Handling patients (turning, transferring, rolling, showering) – (15)
- Handling bariatric patients - (4)
- Pushing/pulling equipment (wheelchairs, commode chairs, trolleys, loaded hoist) – (9)
- Manual handling – (39)

The new *Transferring People* *Safely*

Update to *Transferring People Safely*

- Why
 - Align with new OHS Act
 - Update on current practices
- New MH Regulations in 2007
- Consulted with original committee/working party

What has changed

- Looks slightly different
- Refers to new OHS Act and legal framework
- Many minor changes (eg. wording, updated statistics, no Minister's foreword, formatting)
- Patient risk assessment worksheet enhanced

Changes to some patient handling tasks

Of the 12 tasks:

- Sitting patient up in bed (task 2)
 - >manual backrests into red from orange
- Moving patient from toilet/bed/chair (tasks 6,7,9)
 - >Refers to 'standing aid'
 - >Specific mention of O/H hoist
- Transferring patient from bed to trolley (task 11)
 - >Slide board without slide sheet into red from orange

What hasn't changed

- Same 12 tasks
- Same general presentation
- Same traffic light model
- Same 3 patient resident record proformas

Other publication news

Designing Workplaces for Safer Handling of Patients/Residents

- Update
- *Why*
 - *to incorporate new legislation*
 - *to incorporate 3 solution sheets*
- *When*
 - *aim for 2007*

Planned Glutaraldehyde guidance

- Draft document titled '*Glutaraldehyde for cold disinfection of medical instruments*'
- Will soon be distributed for comment.
- If you want to comment, let us know.

New *Visiting Health Services*

- *Who*
 - *Covers district nursing, community mental health services, visiting pathology services, GPs*
- *Where*
 - *Homes, rooming/boarding houses, supported accommodation residential services, crisis accommodation, CRUs, hotels*
- *Uses traffic light model*
- *Addresses OV and Manual Handling*