

# The Community Engagement Framework



*Creating a healthier community... its about people*

[www.communitiescount.com.au](http://www.communitiescount.com.au)

# What is the Community Engagement Framework?

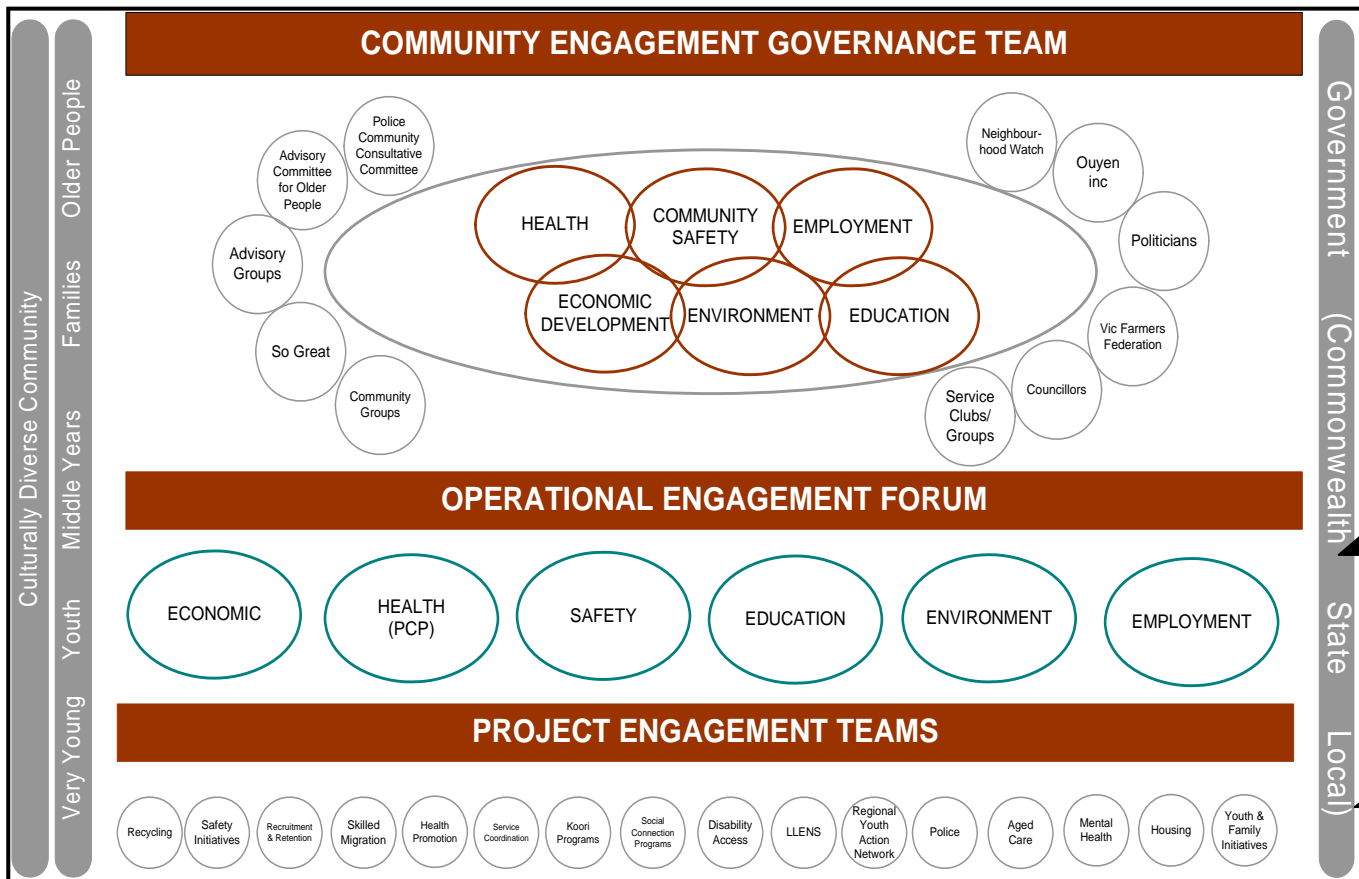
- An integrated planning process
- Brings together the community, government and non-government organisations
- Works on issues in a holistic way
- Looks at improving and measuring social, economic and environmental standards



*Creating a healthier community... its about people*

[www.communitiescount.com.au](http://www.communitiescount.com.au)

# The Framework and how it Works



← They then feed this back through the Operational Engagement Forum to the Governance Group for a decision to be made.

← 'se'.  
The Governance Team feeds the information into the Operational Engagement Forum.

← The Operational Group then feeds into the Project Engagement Teams.



*Creating a healthier community... its about people*

# What is the Governance Group?



- The Governance Group is made up of representatives from each of the above areas. They provide direction and facilitate the Framework

# Who Makes up the Governance Group?

- Health:

Sunraysia Community Health Services  
Mildura Base Hospital

- Community Safety:

Mildura Police Service Area

- Employment:

Northern Mallee Local Learning and Employment  
Network

- Economic Development:

Sunraysia Mallee Economic Development Board

- Environment:

Mallee Catchment Management Authority

- Education:

LaTrobe University

- Other Stakeholders

Mildura Rural City Council  
Sunraysia Ethnic Communities Council  
Mildura Base Hospital Aboriginal Liaison  
Officer



*Creating a healthier community... its about people*

[www.communitiescount.com.au](http://www.communitiescount.com.au)

# Why do we need the Framework?

- Provides the tool to identify opportunities to work collaboratively
- Stakeholders will be able to compliment one another's programs and initiatives
- Will strengthen relationships between organisations
- Collectively utilise resources in an innovative and outcome focused way
- Use the data (Social Indicators) and link it with operational strategies



*Creating a healthier community... its about people*

[www.communitiescount.com.au](http://www.communitiescount.com.au)

# How can the Framework benefit Mildura Police Service Area?

- Help to create a more integrated and co-ordinated response to issues
- Will help you to create stronger relationships with other organisations
- Allow you to take a holistic view of issues
- Allow you to make more informed decisions when creating strategies/initiatives/programs
- Help all organisations and sectors involved in issues to take responsibility



*Creating a healthier community... its about people*

[www.communitiescount.com.au](http://www.communitiescount.com.au)



# Correlation - Attributable Factors

	Overall correlation (Vic sub-sample) N=277	Low social cohesion N=83	Medium social cohesion N=120	High social cohesion N=74
Unemployment/low birth wt	.46**	.46	.39	.28
Early school leaving/low birth wt	.45**	.56	.36	.16
Year 12 incomplete/low birth wt	.45**	.55	.38	.12
Unemployment/ imprisonment	.65**	.75	.64	.22
Unemployment/early school leaving	.64**	.63	.65	.28
Unemployment/court convictions	.73**	.70	.73	.50
Early school leaving/ imprisonment	.47**	.46	.43	.11
Low family income /imprisonment	.55**	.62	.52	.18
Year 12 incomplete/imprisonment	.35**	.26	.32	.03
Low work skills/imprisonment	.47**	.46	.44	.10
Unemployment/child abuse	.68**	.56	.72	.40
Low family income/child abuse	.68**	.53	.72	.45

## Example

If the % of people who did not complete year 12 is decreased, this would effectively decrease the % of unemployment rates.

Mildura Social Indicators Reports currently shows;

Not attending/did not Complete Year 12 (Mildura Central) = 65.8%

Rate of Unemployment (Mildura Central) = 7.2%

If the not attending/did not complete year 12 figure was reduced to 60%, based on the correlation figure of .64 between the two indicators, it would be expected that the unemployment figures would also decrease by 3.71%.

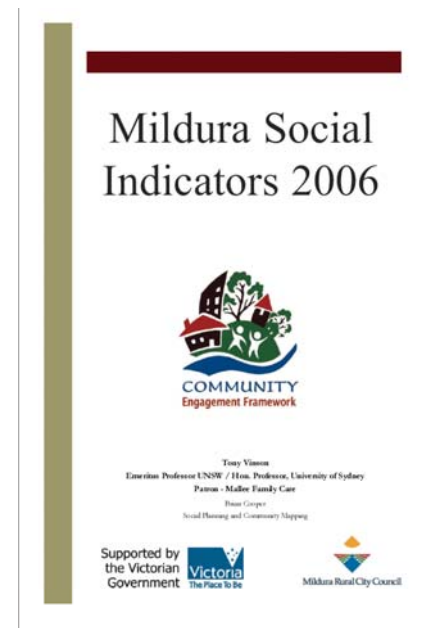
# Mildura Social Indicators 2006 Report

- Mildura Rural City Council produced a Social Indicators report in 2006
- Explores approximately 40 Social Indicators that apply to our municipality



*Creating a healthier community... its about people*

[www.communitiescount.com.au](http://www.communitiescount.com.au)



# How can we use Social Indicators?

- Community engagement and community strengthening
- Support for Council decision making
- Integrated policy and planning
- Better reporting for accountability
- Focus on results



*Creating a healthier community... its about people*

[www.communitiescount.com.au](http://www.communitiescount.com.au)

# The Operational Groups

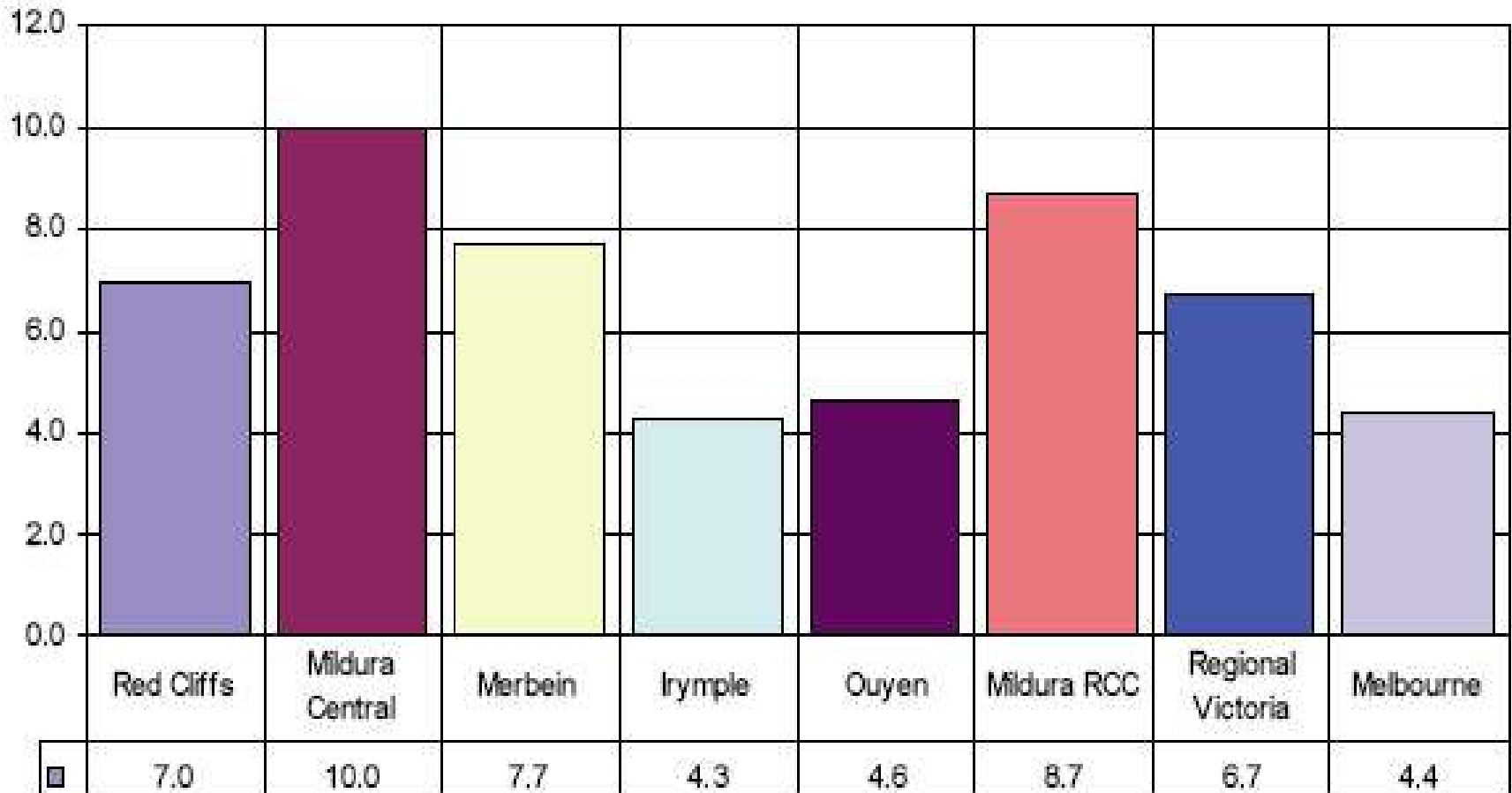
- From the Social Indicator report, the Governance Group chose five Indicators that stood out as needing to be addressed in the near future
- Two were under the heading of Community Safety
  - Criminal Convictions
  - Prison Admissions



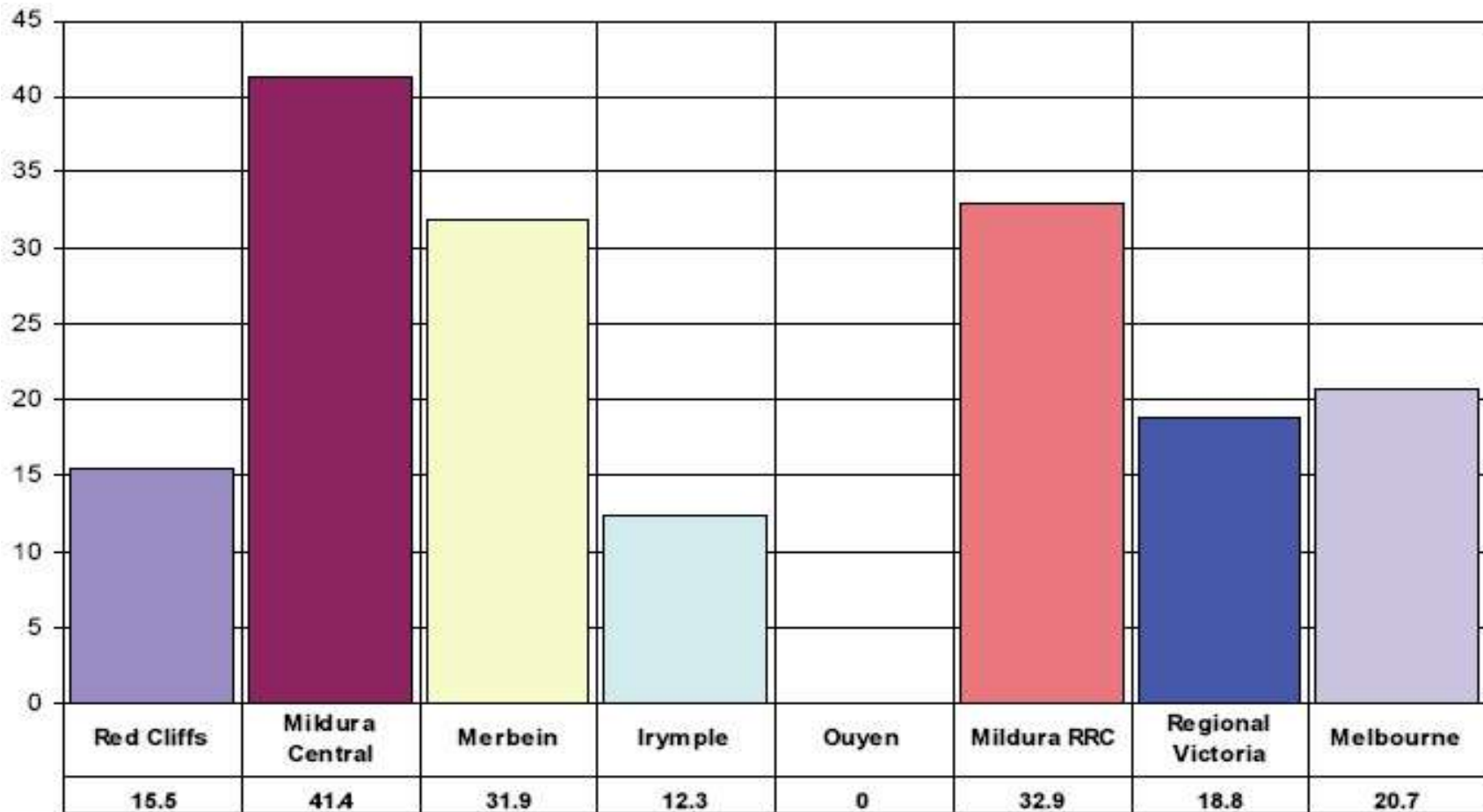
*Creating a healthier community... its about people*

[www.communitiescount.com.au](http://www.communitiescount.com.au)

# Criminal Convictions



# Prison Admissions



*Creating a healthier community... its about people*

[www.communitiescount.com.au](http://www.communitiescount.com.au)

# Mildura Police Service Area's Role

- Take on the role of lead agency for these two Indicators
- Gather together people from all sectors e.g: health, education, to look at the Indicators in a holistic way
- Delve deeper into the Indicators and from this information, create an action plan to be implemented in the community



*Creating a healthier community... its about people*

[www.communitiescount.com.au](http://www.communitiescount.com.au)

# The Website

- To provide a central site that includes information on strategies, programs and initiatives from many different agency's
- Provide a broad overview of what is being done in our community to address issues
- Allow organisations to work together to achieve common goals
- Have valuable input into the wellbeing of our community



*Creating a healthier community... its about people*

[www.communitiescount.com.au](http://www.communitiescount.com.au)

# The Website

[www.communitiescount.com.au](http://www.communitiescount.com.au)



## COMMUNITY Engagement Framework

Welcome to the **Community Engagement Framework** website. Use the Links in the circles to find key statistics and graphs on each demographic group in our community.



SECTORS

[Admin Login](#) | [Legal](#) | [Help](#) | [Site Map](#) | [Contact](#) | [Search](#)

*Creating a healthier community... it's about people*



Copyright 2006 Mildura Rural City Council. All rights reserved.

Social indicators status:

[Age / Gender Profile](#) ▲



Mildura Rural City Council

Supported by  
the Victorian  
Government

