

Hospital Services Report

December Quarter 1999

Notes

This document contains the most up-to-date information available at the time of preparation.

This *Hospital Services Report* is available on the Department of Human Services Internet site located at:

<http://www.dhs.vic.gov.au/ahs/pub.htm>

Design and production by Department of Human Services, Melbourne, Victoria.

December 1999

© Copyright Department of Human Services 1999.

This publication is copyright. No part may be reproduced by any process except in accordance with the provisions of the *Copyright Act 1968*.

Contents

<i>Introduction</i>	1
1. Private Health Insurance - December Quarter 1999	2
2. Hospital Admitted Patient Activity - December Quarter 1999	3
3. Access to Emergency Services - December Quarter 1999	6
4. Access to Critical Care Services - December Quarter 1999	14
5. Access to Elective Surgery - December Quarter 1999	15
6 Accredited Victorian Acute Public Hospitals	29
7 Glossary	32

Introduction

Consumers, health care providers and government all need information on the quality of health services. Public access to information assists consumers to understand the health care system, it assists providers of health services in planning and increases the accountability of the Department of Human Services to the people in the state of Victoria, Australia.

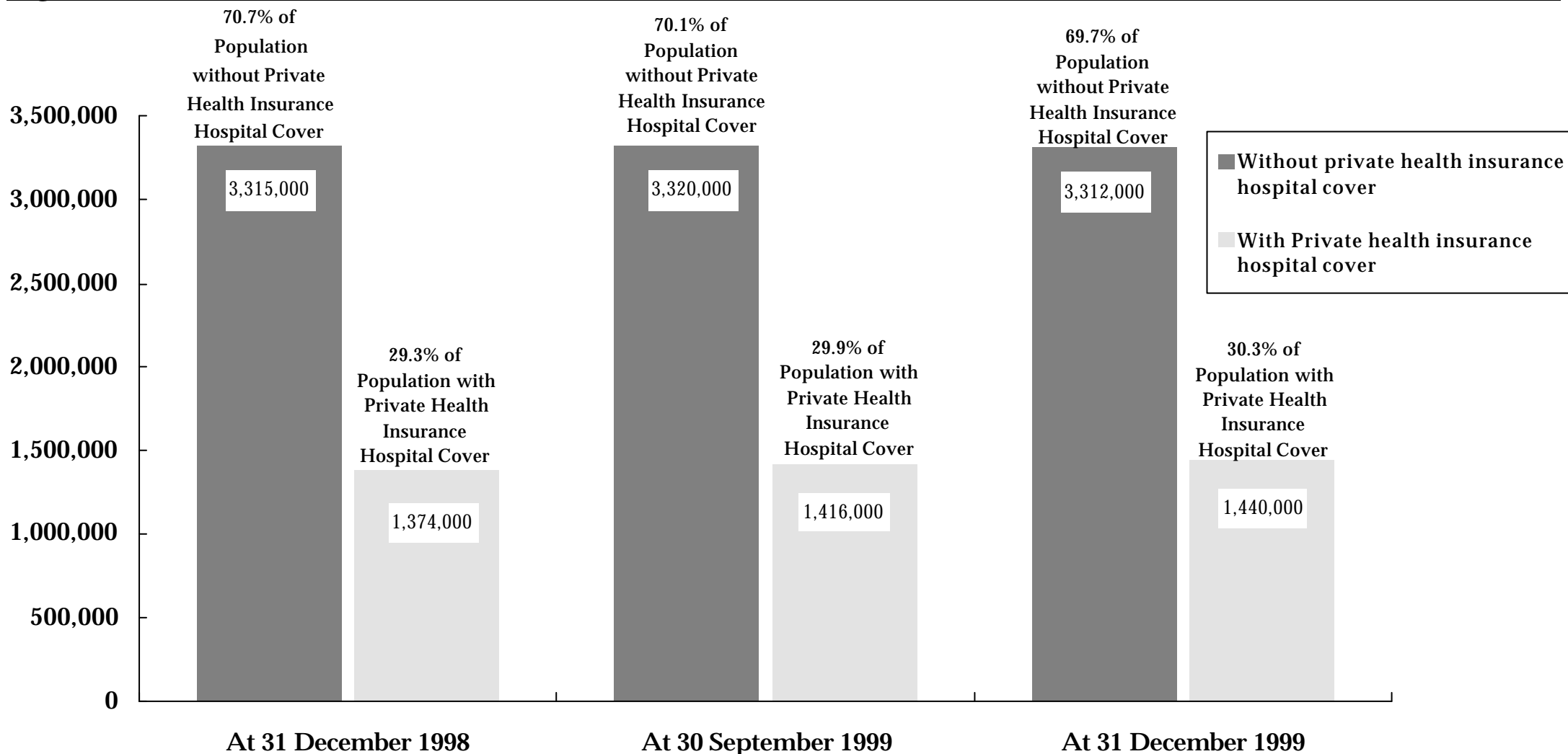
The *Hospital Services Report* was introduced in 1995. This edition includes data for the December Quarter 1999, which covers the months of October, November and December.

The information included in this report is often requested from the Department. Since technical information of this nature is very difficult to interpret, each graph and table needs to be carefully considered in the context of the complexity of the health care system. Department staff, hospital staff, general practitioners and other health care professionals may be able to assist you to interpret this report.

1. Private Health Insurance

How many Victorians have private health insurance hospital cover?

Figure 1.1 Health Insurance Status of Victorians ^{1 2 3}



¹ Data are for all people covered by insurance, that is, contributors, partners and dependants.

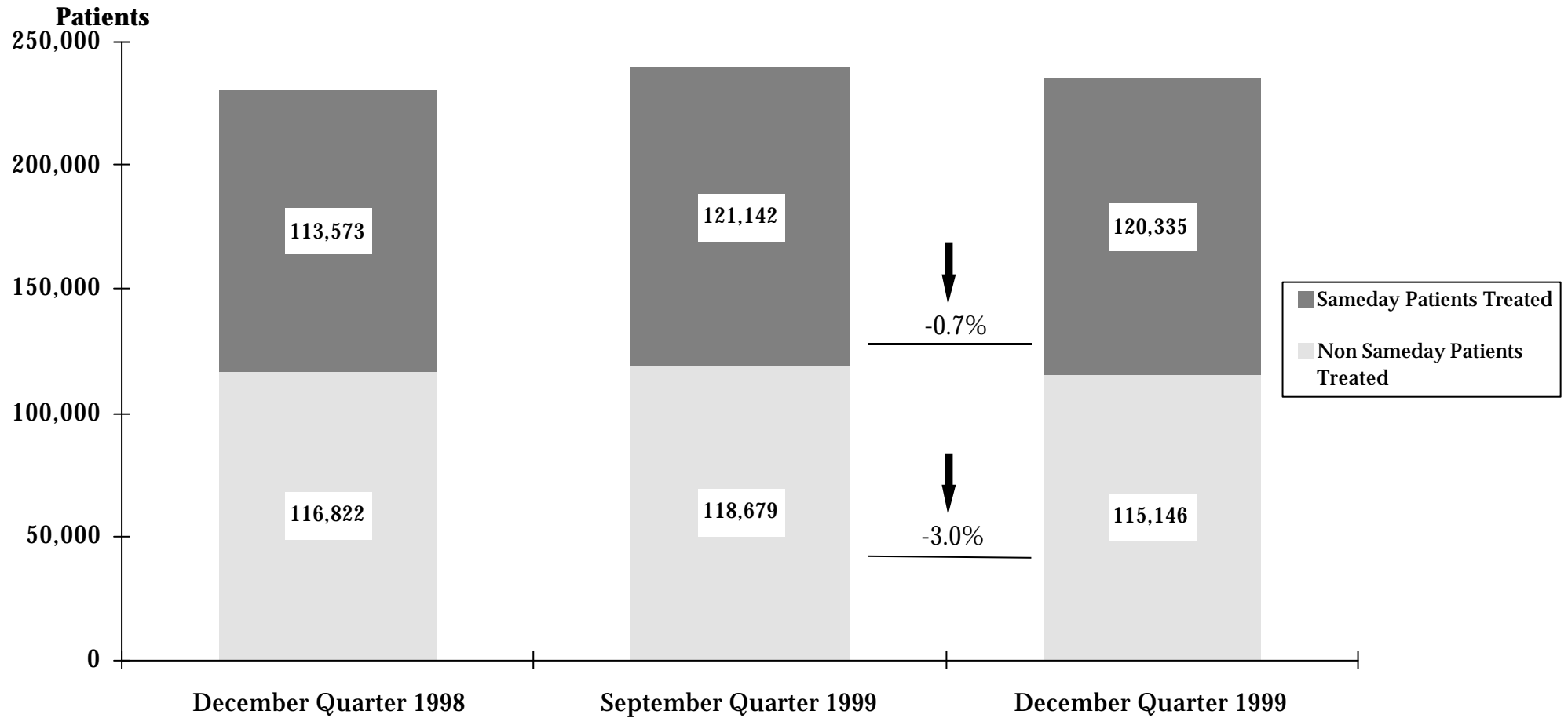
² Data for current and previous quarters are provisional.

³ Statistics reflect total persons covered by any level of hospital private health insurance.

2. Hospital Admitted Patient Activity

How many patients are admitted to hospital?

Figure 2.1 Admitted Patients in Public Hospitals^{1 2 3}



¹ Data are for casemix-funded acute public hospital patients. The data refer to the number of “separations” (ie. the number of patients that have been discharged from hospital).

² The data are provisional.

³ “Sameday” patients are admitted and discharged on the same day.

How many patients are admitted to hospital?

Table 2.1 Admitted Patients by Individual Hospital ^{1 2 3}

Hospital	December Quarter 1998		September Quarter 1999		December Quarter 1999		Change (%) September 1999 to December 1999		
	Non Sameday Only	All	Non Sameday Only	All	Non Sameday Only	All	Non Sameday Only	All	
North Western Health Care Network									
Royal Melbourne Hospital	5,695	14,292	5,647	14,431	5,500	14,582	-2.6%	1.0%	
Western Hospital	5,420	8,172	4,707	8,523	4,854	8,529	3.1%	0.1%	
The Northern Hospital	3,568	5,831	3,604	5,985	3,739	5,955	3.7%	-0.5%	
Other North Western Health Care Network Hospitals	2,321	6,902	3,188	8,008	3,044	7,953	-4.5%	-0.7%	
Inner and Eastern Health Care Network									
The Alfred	4,786	11,410	4,648	11,526	4,921	11,538	5.9%	0.1%	
The Angliss Health Services	2,453	4,180	2,564	5,012	2,502	4,846	-2.4%	-3.3%	
Box Hill Hospital	4,282	8,075	4,598	8,486	4,539	8,164	-1.3%	-3.8%	
Caulfield General Medical Centre	840	2,294	533	1,604	555	1,792	4.1%	11.7%	
Maroondah Hospital	2,005	3,760	1,799	3,274	1,869	3,413	3.9%	4.2%	
Peter MacCallum Cancer Institute	1,244	2,999	1,296	2,921	1,300	3,153	0.3%	7.9%	
The Royal Victorian Eye and Ear Hospital	1,607	2,933	1,487	3,078	1,409	3,026	-5.2%	-1.7%	
Other Inner and Eastern Health Care Network Hospitals ⁴	338	526	162	396	147	378	-9.3%	-4.5%	
Southern Health Care Network									
Dandenong Hospital	4,461	6,570	4,455	6,474	4,356	6,533	-2.2%	0.9%	
Monash Medical Centre, Clayton	6,137	11,026	6,755	12,344	6,583	12,263	-2.5%	-0.7%	
Sandringham & District Memorial Hospital	1,091	2,208	1,421	3,069	1,327	2,968	-6.6%	-3.3%	
Other Southern Health Care Network Hospitals	1,542	5,848	1,454	5,963	1,438	5,861	-1.1%	-1.7%	
Peninsula Health Care Network									
Frankston Hospital	4,353	8,745	4,256	9,155	3,980	8,804	-6.5%	-3.8%	
Other Peninsula Health Care Network Hospitals	758	1,110	822	1,145	755	1,083	-8.2%	-5.4%	

¹ Data relate to acute patients at casemix-funded public hospitals and refer to the number of 'separations' (ie. the number of patients that have been discharged from hospital).

² 1999/2000 data are provisional.

³ Non Sameday patients remain in hospital overnight or longer.

⁴ St George's Health Service, included under this category, ceased to treat acute patients from 1 January 1999.

Table 2.1 Admitted Patients by Individual Hospital (continued)

Hospital	December Quarter 1998		September Quarter 1999		December Quarter 1999		Change (%) September 1999 to December 1999		
	Non Sameday Only	All	Non Sameday Only	All	Non Sameday Only	All	Non Sameday Only	All	
Women's and Children's Health Care Network									
Royal Children's Hospital	4,541	7,473	4,814	7,971	4,212	7,308	-12.5%	-8.3%	
Royal Women's Hospital	3,042	7,213	2,812	6,970	2,852	6,810	1.4%	-2.3%	
Other Metropolitan Hospitals									
Austin & Repatriation Medical Centre	6,352	16,603	5,525	16,159	6,106	16,943	10.5%	4.9%	
Mercy Hospital for Women	2,249	3,723	2,250	3,583	2,180	3,475	-3.1%	-3.0%	
Royal Talbot Rehabilitation Centre	170	170	161	161	237	238	47.2%	47.8%	
St Vincent's Hospital	3,931	9,462	4,267	10,009	4,133	9,905	-3.1%	-1.0%	
Other Metropolitan Non-network Hospitals	1,725	3,980	1,825	4,413	1,778	4,587	-2.6%	3.9%	
Non Metropolitan Hospitals									
Ballarat Health Services	3,073	5,524	3,071	5,780	2,947	5,596	-4.0%	-3.2%	
Barwon Health	5,069	9,582	5,388	10,359	5,325	10,434	-1.2%	0.7%	
Bendigo Health Care Group	2,878	5,023	2,891	5,058	2,970	5,319	2.7%	5.2%	
Central Wellington Health Services	1,149	2,134	1,208	2,074	1,129	2,010	-6.5%	-3.1%	
Goulburn Valley Health	2,414	4,099	2,461	4,174	2,401	4,341	-2.4%	4.0%	
New Latrobe Regional Hospital	2,214	4,978	2,324	5,503	2,111	4,977	-9.2%	-9.6%	
Wangaratta District Base Hospital	1,491	2,396	1,729	2,804	1,623	2,697	-6.1%	-3.8%	
South West Healthcare	1,886	3,171	1,936	3,300	1,831	3,129	-5.4%	-5.2%	
Wimmera Health Care Group	1,075	1,829	1,031	1,918	1,009	1,877	-2.1%	-2.1%	
Wodonga Regional Health Service	1,516	3,332	1,683	3,677	1,516	3,445	-9.9%	-6.3%	
Other Non Metropolitan Hospitals	19,146	32,822	19,907	34,514	17,968	31,549	-9.7%	-8.6%	
Total All Public Hospitals	116,822	230,395	118,679	239,821	115,146	235,481	-3.0%	-1.8%	

Source: Victorian Admitted Episode Dataset (21 February 2000 update).

3. Access to Emergency Services

How many patients are treated in emergency departments?

Table 3.1: Patients Treated in Selected Public Hospital Emergency Departments ^{1 2}

	December Quarter 1998	September Quarter 1999	December Quarter 1999	% Change September 1999 to December 1999
Patients Treated	158,680	159,169	159,705	0.34%

¹ Data only for hospitals participating in the Emergency Services Enhancement Program / Hospital Access Program. A complete list of these hospitals is given in Table 3.2.

² September and December quarters 1999 data are provisional.

Source: Victorian Emergency Minimum Dataset.

How many patients are treated in each hospital emergency department?

Table 3.2 Patients Treated in Hospital Emergency Departments, by Individual Hospitals ^{1 2}

Hospital	December Quarter 1998	September Quarter 1999	December Quarter 1999	% Change September 1999 to December 1999
North Western Health Care Network				
Northern Hospital	9,521	9,760	10,447	7.0%
Royal Melbourne Hospital	10,470	10,986	11,072	0.8%
Western Hospital	9,188	8,873	9,487	6.9%
Inner and Eastern Health Care Network				
The Alfred	10,110	8,881	9,243	4.1%
The Angliss Health Services	7,474	7,246	7,376	1.8%
Box Hill Hospital	8,437	8,223	8,447	2.7%
Maroondah Hospital	7,197	6,970	7,278	4.4%
Southern Health Care Network				
Dandenong Hospital	10,345	10,029	10,024	0.0%
Monash Medical Centre	12,302	13,028	12,410	-4.7%
Peninsula Health Care Network				
Frankston Hospital	7,954	8,436	8,412	-0.3%

¹ Data only for hospitals participating in the Emergency Services Enhancement Program / Hospital Access Program.

² Data include all emergency department patients, that is, they include patients who are subsequently admitted to hospital and patients who are treated in the emergency department without being admitted to hospital.

Table 3.2 Patients Treated in Hospital Emergency Departments, by Individual Hospitals (continued)

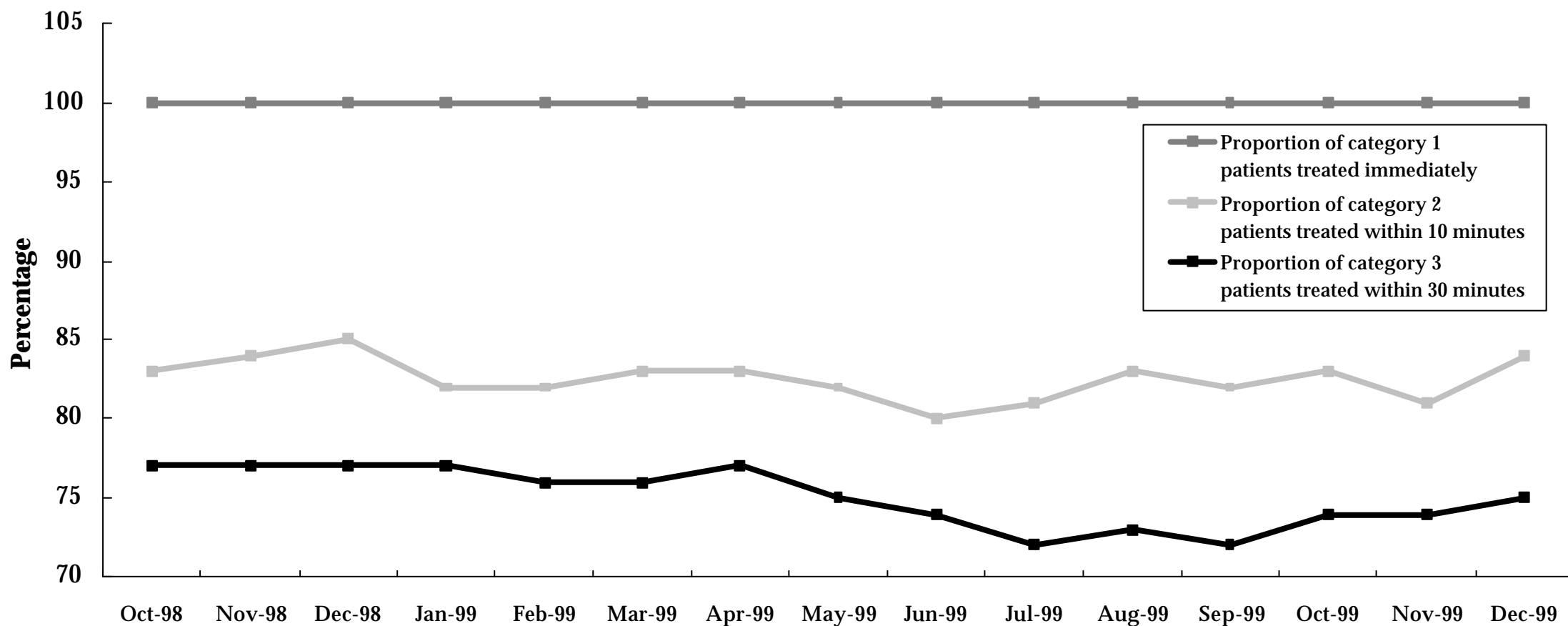
Hospital	December Quarter 1998	September Quarter 1999	December Quarter 1999	% Change September 1999 to December 1999
Women's and Children's Health Care Network				
Royal Children's Hospital	13,129	14,910	12,579	-15.6%
Metropolitan Non-Network Hospitals				
Austin and Repatriation Medical Centre	8,829	8,253	8,851	7.2%
St Vincent's Hospital	6,537	6,489	6,582	1.4%
Non Metropolitan Hospitals				
Ballarat Health Services ³	7,313	7,093	7,313	3.1%
Barwon Health	8,963	9,177	9,353	1.9%
Bendigo Health Care Group	8,342	8,348	8,227	-1.4%
Goulburn Valley Health	5,991	5,623	5,830	3.7%
New Latrobe Regional Hospital	6,578	6,844	6,774	-1.0%
Total	158,680	159,169	159,705	0.3%

³ September and December quarters 1999 data for Ballarat Health Services are provisional.

Source: Victorian Emergency Minimum Dataset.

How many emergency department patients are treated within ideal time?

Figure 3.1 Emergency Department Achievement of ACEM Waiting Times by Triage Category^{1 2 3}



¹ Waiting times are calculated as the time between presentation at the emergency department and commencement of treatment. The following Australasian College for Emergency Medicine (ACEM) patient categories and recommended treatment times are used:

Category 1: Resuscitation case requiring immediate treatment, for example, major trauma, cardiac arrest, unconsciousness, shock.

Category 2: Emergency case requiring treatment within 10 minutes, for example, severe trauma, chest pain, severe pain, severe breathing difficulty.

Category 3: Urgent case requiring treatment within 30 minutes, for example, moderate trauma, infection, breathing difficulty.

² Data only for hospitals participating in the Emergency Services Enhancement Program / Hospital Access Program.

³ September and December quarters 1999 data are provisional.

How many emergency department patients are treated within ideal time?

Table 3.3 Patients treated in selected public hospital emergency departments in triage category 1, 2 or 3 by whether treated in ACEM recommended waiting time: December quarter 1999^{1 2}

Hospital	Triage Category 1		Triage Category 2		Triage Category 3	
	Total patients	Treated immediately	Total patients	Treated in 10 minutes	Total patients	Treated in 30 minutes
North Western Health Care Network						
Northern Hospital	90	100%	414	85%	2,488	75%
Royal Melbourne Hospital	178	100%	1,138	84%	3,640	87%
Western Hospital	148	100%	947	81%	3,272	81%
Inner and Eastern Health Care Network						
The Alfred ³	n/a	n/a	n/a	n/a	n/a	n/a
The Angliss Health Services	18	100%	427	82%	1,653	75%
Box Hill Hospital	133	100%	400	85%	2,976	74%
Maroondah Hospital	46	100%	305	82%	1,567	75%
Southern Health Care Network						
Dandenong Hospital	206	100%	957	77%	3,629	71%
Monash Medical Centre	224	100%	1,416	81%	4,212	71%
Peninsula Health Care Network						
Frankston Hospital	69	100%	496	88%	3,783	56%

¹ Data only for hospitals participating in the Hospital Access Program.

² Australasian College for Emergency Medicine (ACEM).

³ December quarter 1999 data for The Alfred are unavailable and therefore totals are subject to amendment.

Table 3.3 Patients treated in selected public hospital emergency departments in triage category 1, 2 or 3 by whether treated in ACEM recommended waiting time: December quarter 1999 (continued) ^{1 2}

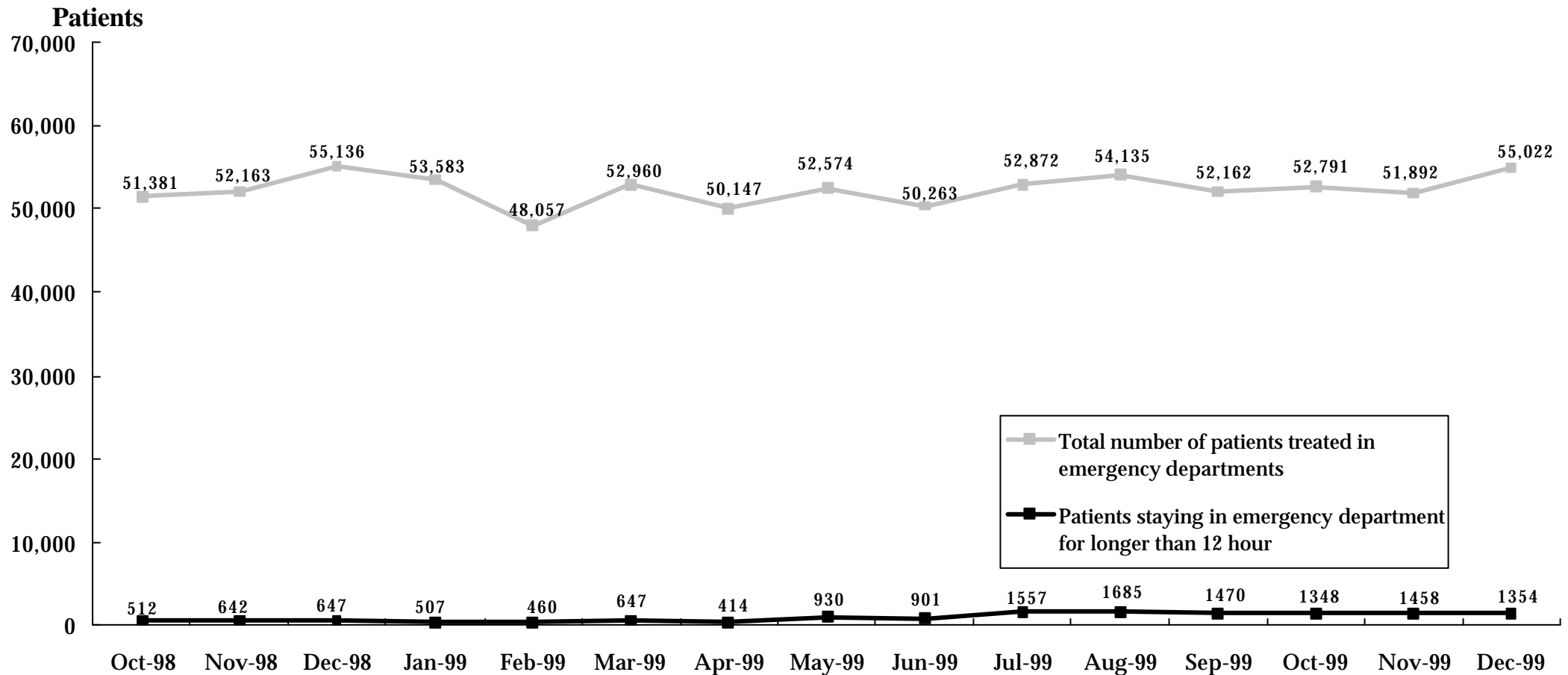
Hospital	Triage Category 1		Triage Category 2		Triage Category 3	
	Total patients	Treated immediately	Total patients	Treated in 10 minutes	Total patients	Treated in 30 minutes
Women's and Children's Health Care Network						
Royal Children's Hospital	32	100%	201	84%	2,670	77%
Metropolitan Non-Network Hospitals						
Austin and Repatriation Medical Centre	108	100%	734	82%	2,958	69%
St Vincent's Hospital	111	100%	465	72%	2,202	68%
Non Metropolitan Hospitals						
Ballarat Health Services ⁴	n/a	n/a	n/a	n/a	n/a	n/a
Barwon Health	81	100%	681	83%	2,880	70%
Bendigo Health Care Group	21	100%	239	82%	1,407	79%
Goulburn Valley Health	29	100%	337	99%	1,697	92%
New Latrobe Regional Hospital	41	100%	416	93%	1,148	89%
Total	1,535	100%	9,573	83%	42,182	74%

⁴ December quarter 1999 data for Ballarat Health Services are unavailable and therefore totals are subject to change.

Source: Victorian Emergency Minimum Dataset.

How many patients stay for an extended period in the emergency department?

Figure 3.2 Patients Staying in Emergency Departments for Over 12 Hours While Waiting for a Hospital Bed ^{1 2 3 4}



¹ The period of 'stay' is calculated from the time the patient arrives in the emergency department to the time when the patient leaves the emergency department.

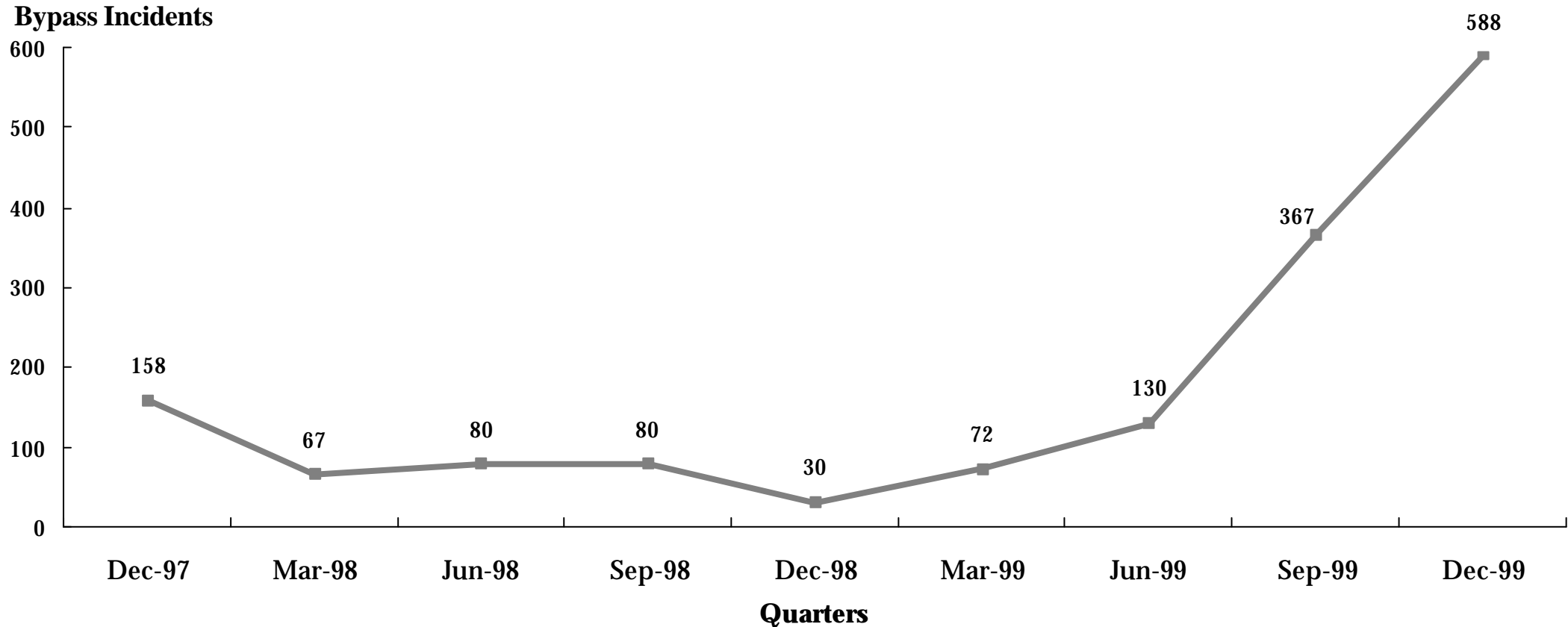
² Data only for hospitals participating in the Emergency Services Enhancement Program / Hospital Access Program.

³ Patients treated in DHS sponsored Chest Pain Evaluation Area Pilots are excluded from these figures.

⁴ September and December quarters 1999 data are provisional.

How often are hospital emergency departments too busy, and consequently go on 'bypass'?

Figure 3.3 Periods of Ambulance Bypass of Public Hospitals ^{1 2 3}



¹ Hospital emergency departments are bypassed by ambulances when the emergency department has reached maximum capacity and the treatment of patients already in the emergency department could be significantly compromised by the ambulance arrival of an additional patient requiring emergency treatment. Each individual period of ambulance bypass is for two hours or less.

² Data only for hospitals participating in the Emergency Services Enhancement Program / Hospital Access Program.

³ Metropolitan Ambulance Service (MAS) response times are now being reported in MAS Response Report: A Quarterly Statistical Review of MAS, Melbourne. Copies of the Response Report can be obtained from MAS, Corporate Planning and Corporate Communications Unit, phone (03) 9840 3648.

4. Access to Critical Care Services

How many hospital beds are available for patients who need intensive care?

Table 4.1 Average Number of Public Hospital Intensive Care Beds (Excluding Step-down Beds) Available and Open at 9.00a.m., by Month¹

	Oct-98	Nov-98	Dec-98	Jan-99	Feb-99	Mar-99	Apr-99	May-99	Jun-99	Jul-99	Aug-99	Sep-99	Oct-99	Nov-99	Dec-99
Available ²	7.3	2.6	6.2	11.8	9.8	6.0	4.2	4.0	4.2	3.5	2.0	2.0	5.0	5.0	3.5
Total Open ³	90.6	93.9	93.5	88.9	92.0	94.0	92.4	92.0	94.0	94.0	95.0	90.0	89.0	90.0	89.0

¹ Based upon hospital census taken at 9.00a.m. daily.

² Available beds are unoccupied beds which are staffed, functional and available to receive new patients.

³ Total open beds are all functioning and staffed beds, regardless of whether they are occupied.

Source: Office of the Coordinator of Emergency and Critical Care Services.

How many hospital beds are available for patients who need coronary care?

Table 4.2 Average Number of Public Hospital Coronary Care Beds (Excluding Step-down Beds) Available and Open at 9.00a.m., by Month¹

	Oct-98	Nov-98	Dec-98	Jan-99	Feb-99	Mar-99	Apr-99	May-99	Jun-99	Jul-99	Aug-99	Sep-99	Oct-99	Nov-99	Dec-99
Available	9.8	8.4	8.2	10.4	9.5	7.5	7.3	5.8	6.0	8.0	5.0	7.0	7.0	6.0	5.0
Total Open	74.0	73.3	72.3	73.5	74.0	73.0	72.0	74.0	72.0	73.0	73.0	72.0	74.0	70.0	70.0

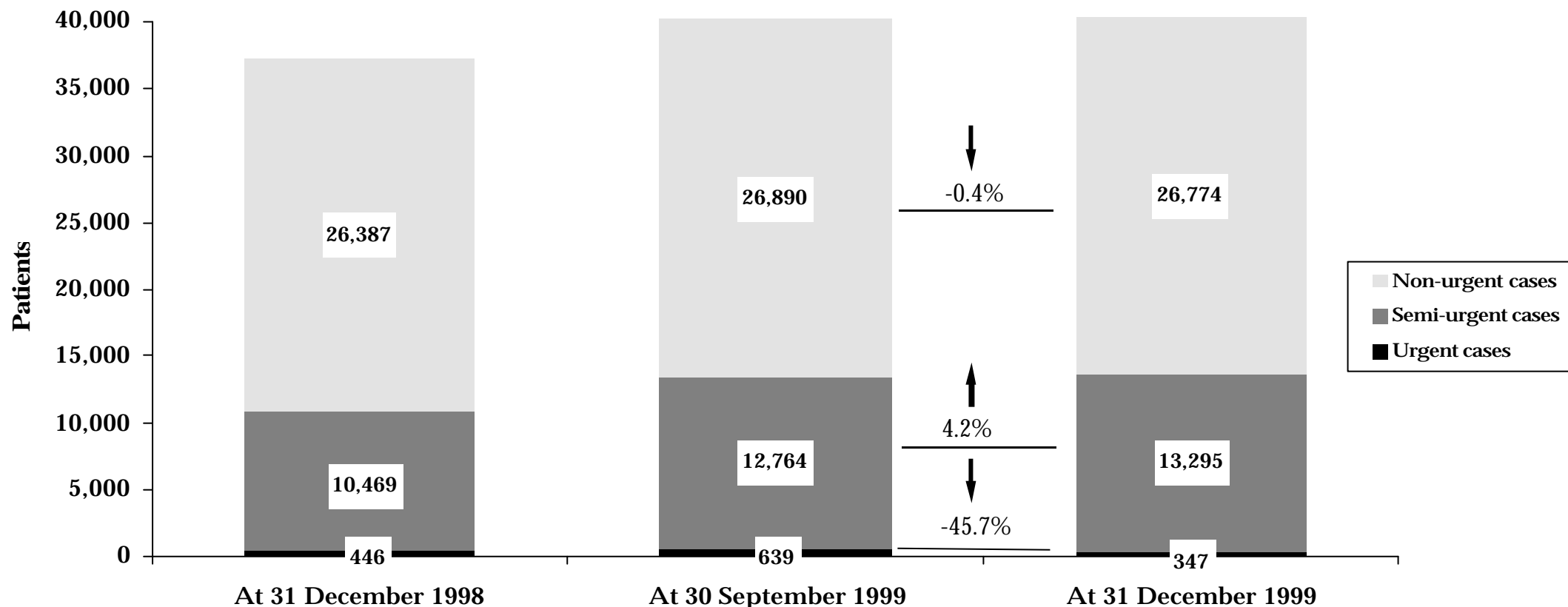
¹ Notes under Table 4.1 apply.

Source: Office of the Coordinator of Emergency and Critical Care Services.

5. Access To Elective Surgery

How many people are on hospital waiting lists for elective surgery?

Figure 5.1 Waiting List by Urgency^{1 2 3 4}



¹ From the 1 July 1999, Victoria has adopted the national definition for waiting list numbers. The new definition counts all patients on either the former booking or waiting lists. The time series information has been revised to reflect the new definition. Thus waiting list numbers in this issue of the HSR are different from issues prior to September 1999.

² The waiting list patient categories are:

- Urgent cases (waiting list category 1): Admission within 30 days desirable for a condition that has the potential to deteriorate quickly to the point that it may become an emergency.
- Semi-urgent cases (waiting list category 2): Admission within 90 days desirable for a condition causing some pain, dysfunction or disability but which is not likely to deteriorate quickly or become an emergency.
- Non-urgent cases (waiting list category 3): Admission at some time in the future acceptable for a condition causing minimal or no pain, dysfunction or disability which is very unlikely to deteriorate quickly and which does not have the potential to become an emergency.

³ The data involved may be small. Small absolute change may have a large impact on the percentage change.

⁴ December quarter 1999 data are provisional.

How many people are on hospital waiting lists for elective surgery?

Table 5.1 Waiting Lists by Urgency, by Individual Hospital ^{1 2}

Hospital	Urgent cases			Semi-urgent cases				Non-urgent cases			
	31 Dec 1998	30 Sep 1999	31 Dec 1999	31 Dec 1998	30 Sep 1999	31 Dec 1999	% Change Sep 1999 to Dec 1999	31 Dec 1998	30 Sep 1999	31 Dec 1999	% Change Sep 1999 to Dec 1999
North Western Health Care Network											
Northern Hospital	20	29	13	409	753	741	-2%	2,107	2,013	2,119	5.3%
Royal Melbourne Hospital	78	53	29	814	836	847	1%	2,024	2,299	2,092	-9.0%
Western Hospital ³	20	31	10	366	645	556	-14%	1,833	1,662	1,382	-16.8%
Sunshine Hospital ³	-	1	2	-	87	44	-49%	-	411	390	-5.1%
Inner and Eastern Health Care Network											
The Alfred	51	73	59	835	1,228	1,556	27%	1,277	1,629	1,752	7.6%
The Angliss Health Services	10	19	9	204	247	235	-5%	359	407	287	-29.5%
Box Hill Hospital	13	13	3	413	435	421	-3%	532	636	742	16.7%
Maroondah Hospital	8	15	8	187	184	212	15%	1,464	1,363	1,402	2.9%
The Royal Victorian Eye and Ear Hospital	0	1	0	2,022	2,588	2,656	3%	4	26	41	57.7%
Southern Health Care Network											
Dandenong Hospital	30	25	14	160	238	262	10%	1,153	1,377	1,437	4.4%
Monash Medical Centre	34	93	38	689	580	511	-12%	3,108	2,661	2,659	-0.1%
Sandringham & District Memorial Hospital	3	12	4	52	93	116	25%	749	707	733	3.7%
Peninsula Health Care Network											
Frankston Hospital	50	47	44	744	881	995	13%	2,230	2,166	2,292	5.8%

¹ From the 1 July 1999, Victoria has adopted the national definition for waiting list numbers. The new definition counts all patients on either the former booking or waiting lists.

The time series information has been revised to reflect the new definition. Thus waiting list numbers in this issue of the HSR are different from issues prior to September 1999.

² The data involved may be small. Small absolute change may have a large impact on the percentage change.

³ Western Hospital and Sunshine Hospital disaggregated on 4 May 1998 and commenced reporting separately to ESIS from 31 January 1999.

Table 5.1 Waiting Lists by Urgency, by Individual Hospital (continued)

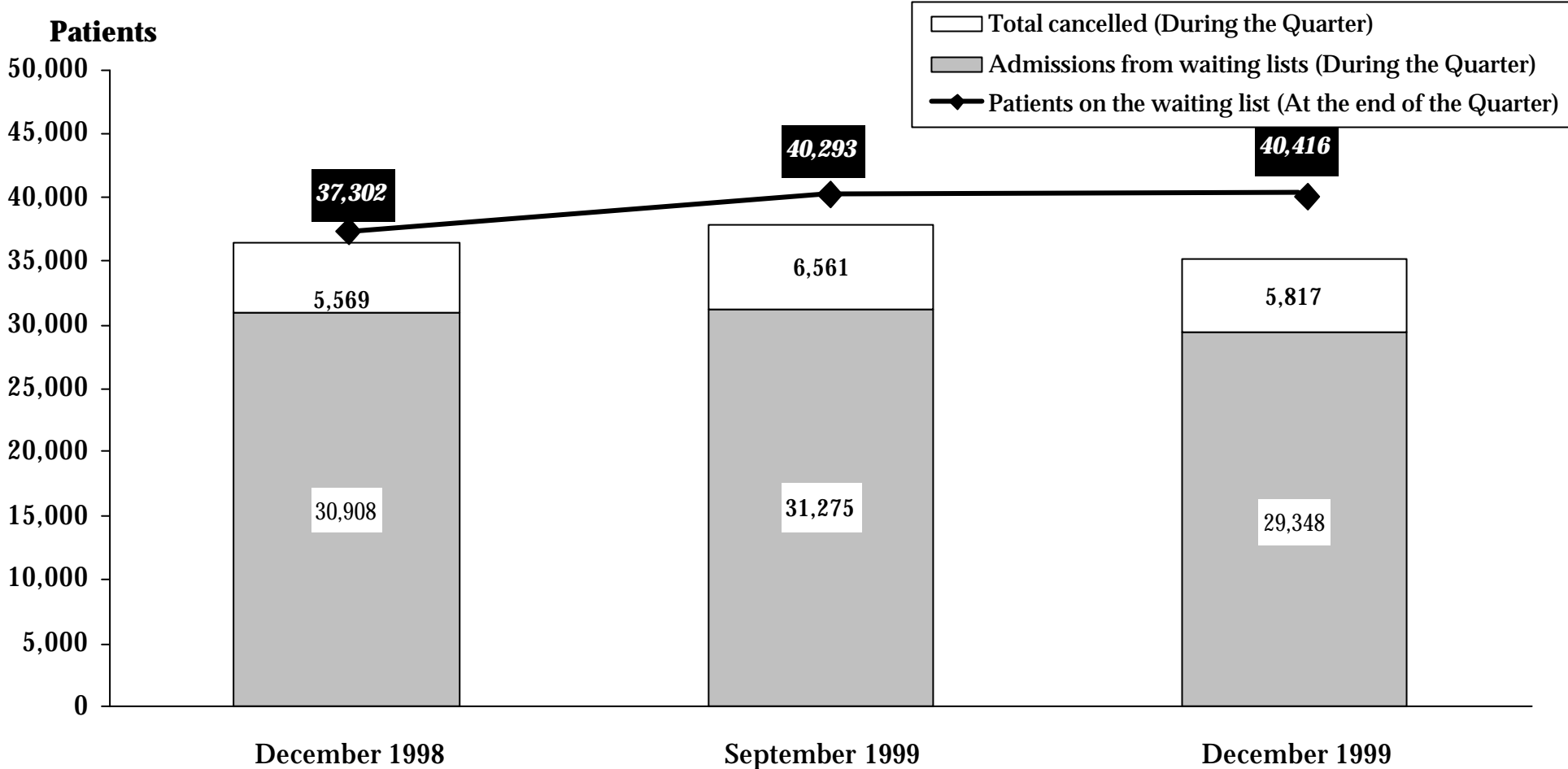
Hospital	Urgent cases			Semi-urgent cases				Non-urgent cases			
	31 Dec 1998	30 Sep 1999	31 Dec 1999	31 Dec 1998	30 Sep 1999	31 Dec 1999	% Change Sep 1999 to Dec 1999	31 Dec 1998	30 Sep 1999	31 Dec 1999	% Change Sep 1999 to Dec 1999
Women's and Children's Health Care Network											
Royal Children's Hospital	18	20	6	139	164	110	-33%	1,282	1,106	992	-10.3%
Royal Women's Hospital	21	22	2	274	325	334	3%	679	586	670	14.3%
Metropolitan Non-Network Hospitals											
Austin and Repatriation Medical Centre	22	38	33	764	966	988	2%	1,133	1,404	1,333	-5.1%
St Vincent's Hospital	21	54	23	771	847	975	15%	1,001	1,017	964	-5.2%
Non Metropolitan Hospitals											
Ballarat Health Services	5	3	6	473	366	366	0%	1,463	1,522	1,440	-5.4%
Barwon Health	0	12	7	532	407	409	0%	1,753	1,647	1,697	3.0%
Bendigo Health Care Group	11	16	17	103	211	223	6%	820	893	844	-5.5%
Goulburn Valley Health	11	20	4	160	147	144	-2%	437	454	403	-11.2%
New Latrobe Regional Hospital	5	14	6	123	111	123	11%	514	552	695	25.9%
Wangaratta District Base Hospital	4	0	0	142	324	362	12%	165	92	65	-29.3%
West Gippsland Hospital	11	28	10	93	101	109	8%	300	260	343	31.9%
Total ⁴	446	639	347	10,469	12,764	13,295	4%	26,387	26,890	26,774	-0.4%

⁴ December quarter 1999 data are provisional.

Source: Elective Surgery Information System.

What is the throughput of people waiting for elective surgery?

Figure 5.2 Admissions and Cancellations^{1 2}



¹ From the 1 July 1999, Victoria has adopted the national definition for waiting list numbers. The new definition counts all patients on either the former booking or waiting lists. The time series information has been revised to reflect the new definition. Thus waiting list numbers in this issue of the HSR are different from issues prior to September 1999.

² December quarter 1999 data are provisional.

Source: Elective Surgery Information System.

What is the throughput of people waiting for elective surgery?

Table 5.2: Admissions and Cancellations, by Individual Hospital ¹

Hospital	Patients on Waiting Lists				Admissions from Waiting Lists				Patients Cancelled from Waiting Lists			
	at 31 Dec 1998	at 30 Sep 1999	at 31 Dec 1999	% Change Sep 1999 to Dec 1999	During the Quarter			% Change Sep 1999 to Dec 1999	During the Quarter			% Change Sep 1999 to Dec 1999
					Dec-98	Sep-99	Dec-99		Dec-98	Sep-99	Dec-99	
North Western Health Care Network												
The Northern Hospital	2,536	2,795	2,873	3%	1,043	1,268	1,191	-6%	198	345	324	-6%
Royal Melbourne Hospital	2,916	3,188	2,968	-7%	1,904	1,563	1,528	-2%	323	536	679	27%
Western Hospital ²	2,219	2,338	1,948	-17%	1,941	1,228	1,360	11%	346	250	518	107%
Sunshine Hospital ²	-	499	436	-13%	-	646	659	2%	-	96	98	2%
Inner and Eastern Health Care Network												
The Alfred	2,163	2,930	3,367	15%	1,505	1,578	1,363	-14%	434	347	291	-16%
The Angliss Health Services	573	673	531	-21%	492	855	812	-5%	57	87	111	28%
Box Hill Hospital	958	1,084	1,166	8%	1,231	1,484	1,313	-12%	234	227	158	-30%
Maroondah Hospital	1,659	1,562	1,622	4%	957	871	825	-5%	261	209	179	-14%
The Royal Victorian Eye and Ear Hospital	2,026	2,615	2,697	3%	2,498	2,708	2,612	-4%	210	294	238	-19%
Southern Health Care Network												
Dandenong Hospital	1,343	1,640	1,713	4%	919	791	866	9%	363	212	170	-20%
Monash Medical Centre	3,831	3,334	3,208	-4%	2,675	2,324	2,305	-1%	679	811	632	-22%
Sandringham & District Memorial Hospital	804	812	853	5%	283	595	567	-5%	78	173	157	-9%
Peninsula Health Care Network												
Frankston Hospital	3,024	3,094	3,331	8%	1,421	1,397	1,191	-15%	301	338	314	-7%

¹ From the 1 July 1999, Victoria has adopted the national definition for waiting list numbers. The new definition counts all patients on either the former booking or waiting lists. The time series information has been revised to reflect the new definition. Thus waiting list numbers in this issue of the HSR are different from issues prior to September 1999.

² Western Hospital and Sunshine Hospital disaggregated on 4 May 1998 and commenced reporting separately to ESIS from 31 January 1999.

Table 5.2: Admissions and Cancellations, by Individual Hospital (continued)

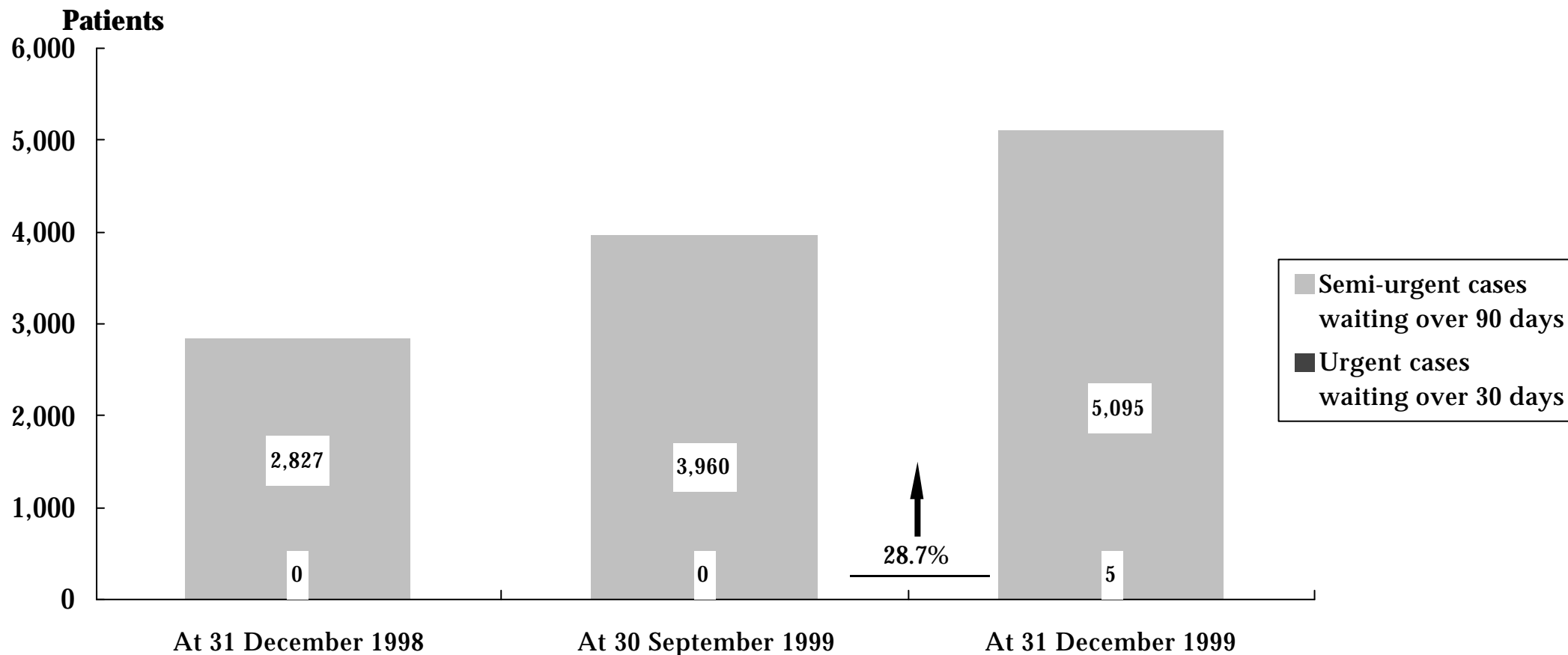
Hospital	Patients on Waiting Lists				Admissions from Waiting Lists				Patients Cancelled from Waiting Lists			
	at 31 Dec 1998	at 30 Sep 1999	at 31 Dec 1999	% Change Sep 1999 to Dec 1999	During the Quarter			% Change Sep 1999 to Dec 1999	During the Quarter			% Change Sep 1999 to Dec 1999
					Dec-98	Sep-99	Dec-99		Dec-98	Sep-99	Dec-99	
Women's and Children's Health Care Network												
Royal Children's Hospital	1,439	1,290	1,108	-14%	2,614	2,720	2,561	-6%	232	298	257	-14%
Royal Women's Hospital	974	933	1,006	8%	2,278	1,956	1,207	-38%	283	290	146	-50%
Metropolitan Non-Network Hospitals												
Austin and Repatriation Medical Centre	1,919	2,408	2,354	-2%	2,407	1,814	2,044	13%	326	487	404	-17%
St Vincent's Hospital	1,793	1,918	1,962	2%	1,163	1,513	1,452	-4%	218	503	202	-60%
Non Metropolitan Hospitals												
Ballarat Health Services	1,941	1,891	1,812	-4%	771	652	727	12%	319	372	158	-58%
Barwon Health	2,285	2,066	2,113	2%	1,220	1,504	1,080	-28%	94	167	320	92%
Bendigo Health Care Group	934	1,120	1,084	-3%	791	760	822	8%	121	201	161	-20%
Goulburn Valley Health	608	621	551	-11%	702	651	720	11%	184	139	116	-17%
New Latrobe Regional Hospital	642	677	824	22%	1,053	1,172	976	-17%	129	77	104	35%
Wangaratta District Base Hospital	311	416	427	3%	452	554	566	2%	65	44	51	16%
West Gippsland Hospital	404	389	462	19%	588	671	601	-10%	114	58	29	-50%
Total ³	37,302	40,293	40,416	0%	30,908	31,275	29,348	-6%	5,569	6,561	5,817	-11%

³ December 1999 quarter data are provisional.

Source: Elective Surgery Information System.

How many people are on hospital waiting list for longer than the ideal time?

Figure 5.3 People on elective surgery waiting lists for longer than ideal time by Urgency^{1 2 3 4}



¹ Waiting longer than ideal includes semi-urgent patients waiting over 90 days and urgent patients waiting over 30 days.

² The data involved may be small. Small absolute change may have a large impact on the percentage change.

³ From the 1 July 1999, Victoria has adopted the national definition for waiting list numbers. The new definition counts all patients on either the former booking or waiting lists. However, the number of people waiting more than the ideal time has always included patients on the former booking list as well as the former waiting list.

⁴ December 1999 data are provisional.

How many people are on hospital waiting lists for longer than the ideal time?

Table 5.3 People on elective surgery waiting lists for longer than ideal time, by Individual Hospital ^{1 2}

Hospital	Urgent cases waiting over 30 days				Semi-urgent cases waiting over 90 days			
	31 Dec 1998	30 Sep 1999	31 Dec 1999	% Change Sep 1999 to Dec 1999	31 Dec 1998	30 Sep 1999	31 Dec 1999	% Change Sep 1999 to Dec 1999
North Western Health Care Network								
Northern Hospital	0	0	0	-	58	265	298	12.5%
Royal Melbourne Hospital	0	0	0	-	300	368	349	-5.2%
Western Hospital ³	0	0	0	-	51	212	154	-27.4%
Sunshine Hospital ³	-	0	0	-	-	1	4	300.0%
Inner and Eastern Health Care Network								
The Alfred	0	0	0	-	226	560	832	48.6%
The Angliss Health Services	0	0	0	-	1	0	2	n.a.
Box Hill Hospital	0	0	0	-	22	40	64	60.0%
Maroondah Hospital	0	0	0	-	0	1	29	2800.0%
The Royal Victorian Eye and Ear Hospital	0	0	0	-	673	976	1182	21.1%
Southern Health Care Network								
Dandenong Hospital	0	0	2	n.a.	16	47	90	91.5%
Monash Medical Centre	0	0	0	-	298	110	94	-14.5%
Sandringham & District Memorial Hospital	0	0	0	-	2	3	25	733.3%
Peninsula Health Care Network								
Frankston Hospital	0	0	0	-	144	233	360	54.5%

¹ From the 1 July 1999, Victoria has adopted the national definition for waiting list numbers. The new definition counts all patients on either the former booking or waiting lists. However, the number of people waiting more than the ideal time has always included patients on the former booking list as well as the former waiting list.

² The data involved may be small. Small absolute change may have a large impact on the percentage change.

³ Western Hospital and Sunshine Hospital disaggregated on 4 May 1998 and commenced reporting separately to ESIS from 31 January 1999.

Table 5.3 People on elective surgery waiting lists for longer than ideal time, by Individual Hospital (continued)

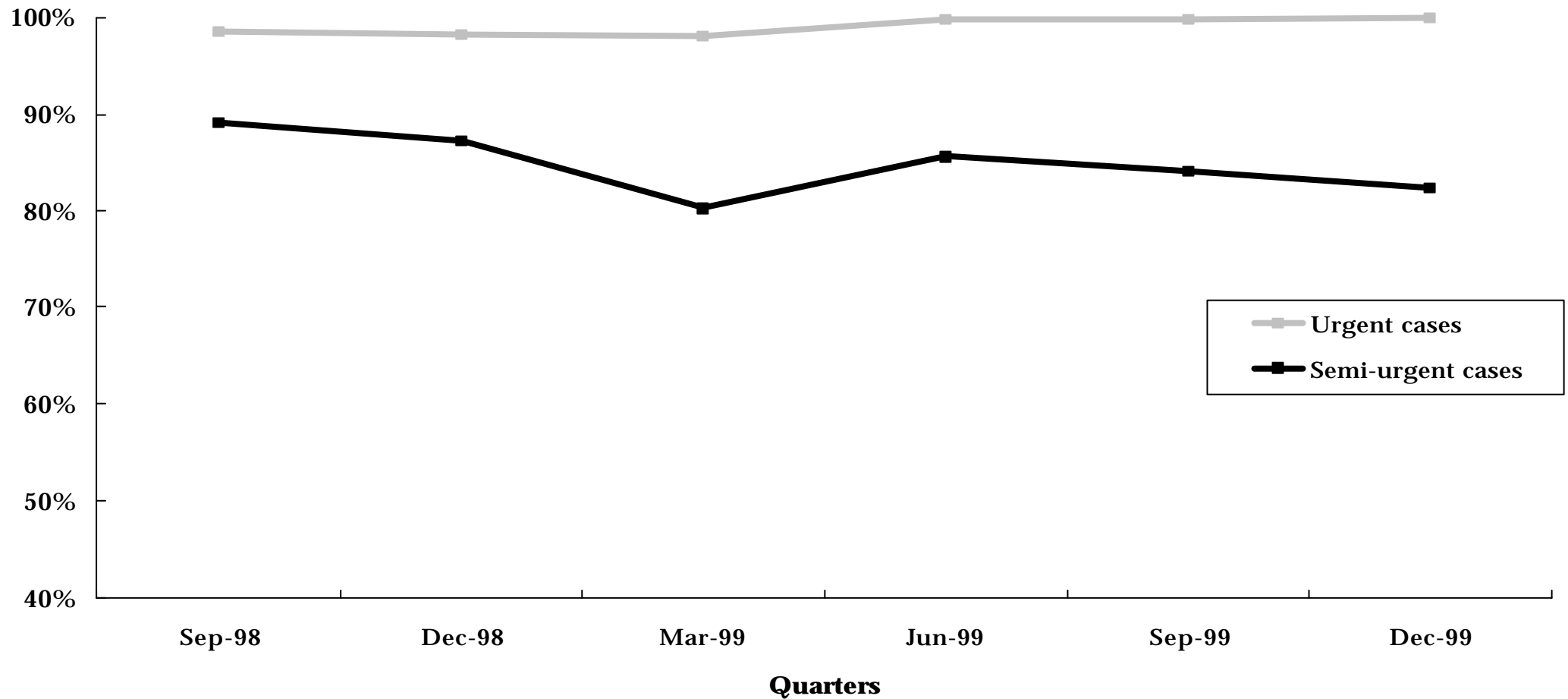
Hospital	Urgent cases waiting over 30 days				Semi-urgent cases waiting over 90 days			
	31 Dec 1998	30 Sep 1999	31 Dec 1999	% Change Sep 1999 to Dec 1999	31 Dec 1998	30 Sep 1999	31 Dec 1999	% Change Sep 1999 to Dec 1999
Women's and Children's Health Care Network								
Royal Children's Hospital	0	0	0	-	0	11	8	-27.3%
Royal Women's Hospital	0	0	0	-	1	0	332	n.a.
Metropolitan Non-Network Hospitals								
Austin & Repatriation Medical Centre	0	0	0	-	204	363	397	9.4%
St Vincent's Hospital	0	0	0	-	286	348	420	20.7%
Non Metropolitan Hospitals								
Ballarat Health Services	0	0	0	-	256	156	173	10.9%
Barwon Health	0	0	0	-	213	111	122	9.9%
Bendigo Health Care Group	0	0	0	-	28	36	35	-2.8%
Goulburn Valley Health	0	0	0	-	12	0	0	-
New Latrobe Regional Hospital	0	0	0	-	0	0	0	-
Wangaratta District Base Hospital	0	0	0	-	35	109	125	14.7%
West Gippsland Hospital	0	0	3	n.a.	1	10	0	-100.0%
Total ⁴	0	0	5	n.a.	2,827	3,960	5,095	28.7%

⁴ December quarter 1999 data are provisional.

Source: Elective Surgery Information System.

What percentage of patients are admitted within clinical ideal times?

Figure 5.4 Percentage of patients from elective surgery waiting lists who were admitted within the ideal time, by Urgency^{1 2}



¹ Waiting longer than ideal includes semi-urgent patients waiting over 90 days and urgent patients waiting over 30 days.

² December quarter 1999 data are provisional.

What percentage of patients are admitted within clinical ideal times?

Table 5.4 Percentage of people from elective surgery waiting lists who were admitted within the ideal time, by Urgency, by Individual Hospital^{1 2}

Hospital	Urgent cases admitted within 30 days during the quarter				Semi-urgent cases admitted within 90 days during the quarter			
	September 1999		December 1999		September 1999		December 1999	
	Numbers	Percentage	Numbers	Percentage	Numbers	Percentage	Numbers	Percentage
North Western Health Care Network								
The Northern Hospital	284	100.0%	264	100.0%	521	74.5%	507	76.9%
Royal Melbourne Hospital	404	100.0%	522	100.0%	691	81.2%	542	77.8%
Western Hospital	236	100.0%	208	100.0%	464	76.6%	527	77.6%
Sunshine Hospital	44	100.0%	37	100.0%	128	98.5%	161	95.3%
Inner and Eastern Health Care Network								
The Alfred	539	99.8%	603	99.8%	627	74.3%	474	74.5%
The Angliss Health Services	88	96.7%	79	100.0%	436	98.9%	407	100.0%
Box Hill Hospital	200	99.5%	214	100.0%	803	92.1%	676	91.1%
Maroondah Hospital	178	100.0%	179	100.0%	278	99.3%	233	94.3%
The Royal Victorian Eye and Ear Hospital	-	-	1	100.0%	2137	79.0%	1918	73.8%
Southern Health Care Network								
Dandenong Hospital	253	100.0%	330	100.0%	188	81.4%	194	78.9%
Monash Medical Centre	581	100.0%	618	100.0%	774	95.0%	761	91.5%
Sandringham & District Memorial Hospital	79	100.0%	89	100.0%	243	96.0%	190	92.2%
Peninsula Health Care Network								
Frankston Hospital	337	99.7%	290	99.7%	370	71.6%	290	58.2%

¹ Urgent cases for December 1999 data are provisional and therefore subject to amendment.

² The data involved may be small. Small absolute change may have a large impact on the percentage change.

Table 5.4 Percentage of people from elective surgery waiting lists who were admitted within the ideal time, by Urgency, by Individual Hospital (continued)

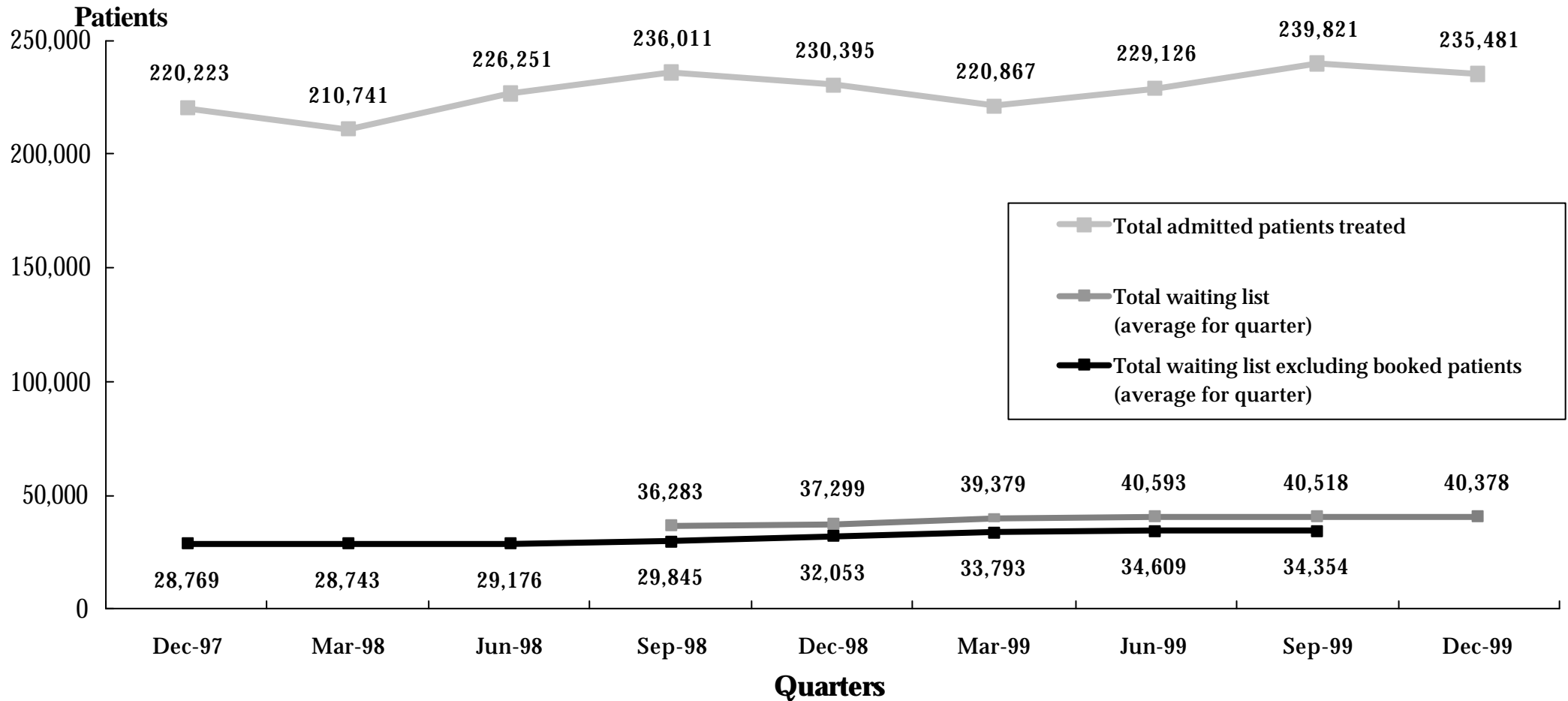
Hospital	Urgent cases admitted within 30 days during the quarter				Semi-urgent cases admitted within 90 days during the quarter			
	September 1999		December 1999		September 1999		December 1999	
	Numbers	Percentage	Numbers	Percentage	Numbers	Percentage	Numbers	Percentage
Women's and Children's Health Care Network								
Royal Children's Hospital	319	100.0%	223	100.0%	418	95.2%	404	94.4%
Royal Women's Hospital	234	100.0%	122	100.0%	625	99.5%	407	98.8%
Metropolitan Non-Network Hospitals								
Austin & Repatriation Medical Centre	452	100.0%	496	100.0%	782	81.8%	833	80.9%
St Vincent's Hospital	288	100.0%	316	100.0%	748	76.8%	701	81.7%
Non Metropolitan Hospitals								
Ballarat Health Services	40	100.0%	53	100.0%	303	73.4%	328	77.9%
Barwon Health	109	100.0%	87	100.0%	688	82.3%	484	86.9%
Bendigo Health Care Group	92	100.0%	127	100.0%	184	79.0%	181	72.7%
Goulburn Valley Health	123	100.0%	136	100.0%	350	99.7%	325	100.0%
New Latrobe Regional Hospital	123	99.2%	97	100.0%	358	100.0%	330	100.0%
Wangaratta District Base Hospital	24	100.0%	23	100.0%	325	81.5%	341	80.2%
West Gippsland Hospital	164	100.0%	175	100.0%	249	96.9%	217	98.2%
Total ³	5191	99.9%	5,289	100.0%	12,690	84.1%	11,431	82.4%

³ December quarter 1999 data are provisional.

Source: Elective Surgery Information System.

How does the waiting list compare to the total number of patients treated?

Figure 5.5 Waiting List Compared with Overall Admitted Patient Activity^{1 2 3}



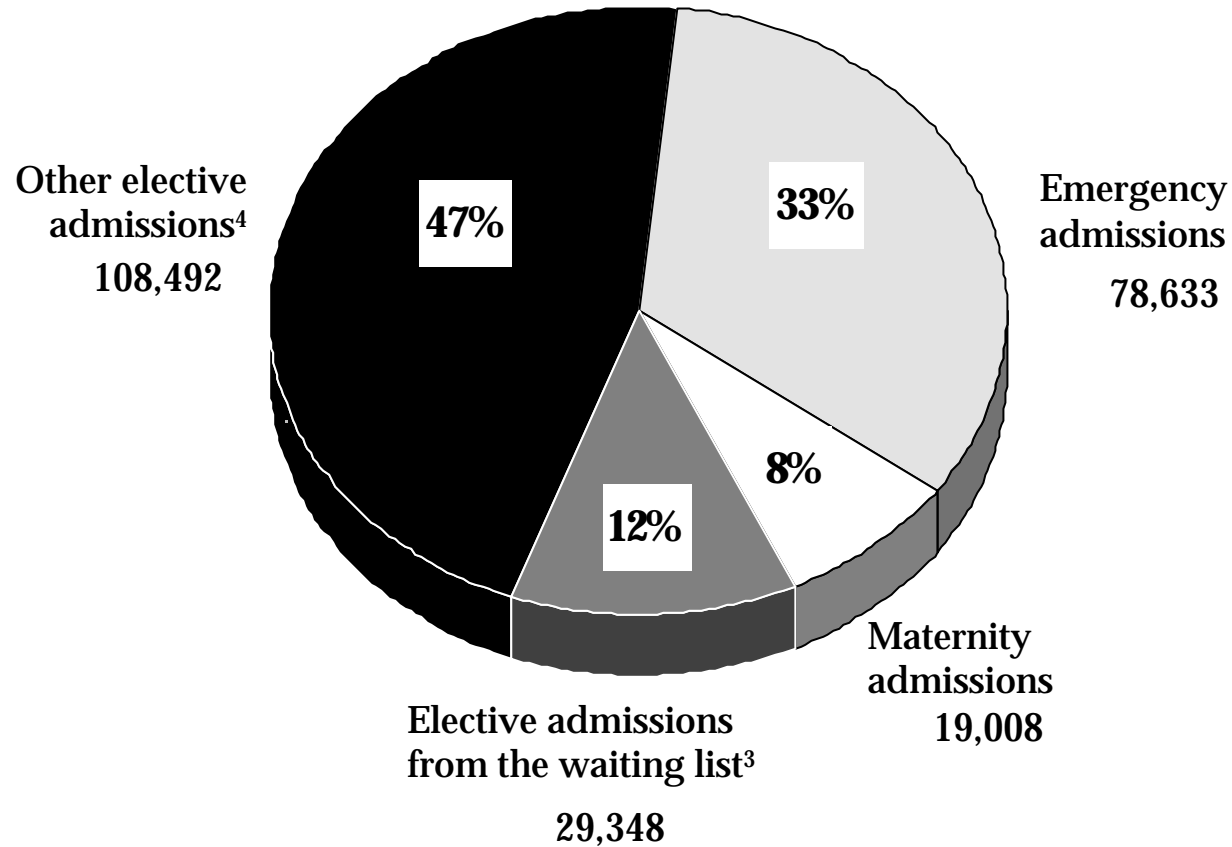
¹ Data in the current quarter for Total Admitted Patients Treated are provisional.

² From the 1 July 1999, Victoria has adopted the national definition for waiting list numbers. The new definition counts all patients on either the former booking or waiting lists. For an interim period the numbers of patients according to the current (Total waiting list) and the former (Total waiting list excluding booked patients) definitions will be displayed.

³ December quarter 1999 data are provisional.

How much of total hospital activity comes from the waiting list?

Figure 5.6 Separations by Admission Type: December Quarter 1999 ^{1 2}



¹ Percentages may not add due to rounding.

² Includes maternity and newborns admissions.

³ Patients admitted from the Elective Surgery Information System waiting list during the quarter:
The data are provisional.

⁴ Includes statistical admissions, which refer to a change in patient care type.

6. Accredited Victorian Acute Public Hospitals

Which public hospitals are accredited?

Table 6.1 Accredited hospitals that are funded through the Acute Health Division, Department of Human Services as at 31 December 1999

Hospital	Accreditation expiry date	Accrediting organisation
North Western Health Care Network		
The Northern Hospital	19 January 2003	ACHS EQuIP
Royal Melbourne Hospital ¹	14 July 2001	ACHS EQuIP
Western Hospital ¹	25 January 2003	ACHS EQuIP
Williamstown Hospital	1 October 2002	ACHS EQuIP
Inner and Eastern Health Care Network		
The Angliss Health Services	23 March 2000	ACHS EQuIP
Box Hill Hospital	16 January 2001	ACHS EQuIP
Caulfield General Medical Centre	4 June 2002	ACHS EQuIP
Maroondah Hospital	5 August 2001	ACHS EQuIP
Peter MacCallum Cancer Institute	7 September 2001	ACHS EQuIP
Royal Victorian Eye & Ear Hospital, The ²	26 February 2000	ACHS EQuIP
The Alfred	20 February 2001	ACHS EQuIP
Yarra Ranges Health Service	28 July 2000	ACHS EQuIP
Southern Health Care Network*		
Dandenong Hospital	25 January 2002	ACHS EQuIP
Hampton Rehabilitation Hospital	25 January 2002	ACHS EQuIP
Monash Medical Centre	25 January 2002	ACHS EQuIP
Sandringham & District Memorial Hospital	25 January 2002	ACHS EQuIP
Peninsula Health Care Network * ³		
Frankston Hospital	17 January 2000	ACHS EQuIP
Rosebud Hospital	17 January 2000	ACHS EQuIP
Women's and Children's Health Care Network*		
Royal Children's Hospital	29 May 2001	ACHS EQuIP
Royal Women's Hospital	29 May 2001	ACHS EQuIP
Metropolitan Non-Network Hospitals		
Austin and Repatriation Medical Centre *	18 November 2000	ACHS EQuIP
Royal Talbot Rehabilitation Centre*	18 November 2000	ACHS EQuIP
Mercy Public Hospital, East Melbourne	5 February 2001	ACHS EQuIP
Mercy Public Hospital, Werribee	26 July 2002	ACHS EQuIP
St Vincent's Hospital	29 November 2000	ACHS EQuIP

¹ Royal Melbourne Hospital and Western Hospital were incorrectly omitted from the list of accredited hospitals as at 30 June 1999 published in the June Quarter 1999 Hospital Service Report.

² The Royal Victorian Eye & Ear Hospital is awaiting the results of its most recent accreditation survey conducted in December 1999.

³ The Peninsula Health Care Network is awaiting the results of its most recent accreditation survey conducted in November 1999.

* Denotes Network Accreditation

**Table 6.1 Accredited hospitals that are funded through the Acute Health Division, Department of Human Services
as at 31 December 1999 (continued)**

Hospital	Accreditation expiry date	Accrediting organisation
Barwon South Western Region		
Barwon Health - The Geelong Hospital	14 August 2001	ACHS EQuIP
Casterton Memorial Hospital	3 April 2000	ACHS EQuIP
Colac Community Health Services	15 November 2002	ACHS EQuIP
Coleraine & District Hospital	25 October 2002	ACHS EQuIP
Lorne Community Hospital	19 February 2000	ACHS EQuIP
Moyne Health Services	28 February 2000	ACHS EQuIP
Otway Health & Community Services	May 2001	QICSA
Portland & District Hospital	16 June 2000	ACHS EQuIP
South West Healthcare - Corangamite Campus ⁴	19 February 2002	ACHS EQuIP
South West Healthcare - Warrnambool Campus	23 September 2002	ACHS EQuIP
Terang & Mortlake Health Service	6 December 2000	ACHS EQuIP
Timboon & District Health Care Service	16 June 2000	ACHS EQuIP
Western District Health Service	23 June 2001	ACHS EQuIP
Grampians Region		
Ballarat Health Services	Awaiting results of accreditation survey as of 30/12/99	ACHS EQuIP
East Grampians Health Service	22 December 2000	ACHS EQuIP
East Wimmera Health Service - Charlton Campus ⁵	28 April 2002	ACHS EQuIP
East Wimmera Health Service - St Arnaud Campus	28 August 2001	ACHS EQuIP
Edenhope & District Hospital	19 May 2000	ACHS EQuIP
Hepburn Health Service	5 January 2001	ACHS EQuIP
Stawell District Hospital	24 May 2002	ACHS EQuIP
Wimmera Health Care Group	8 October 2001	ACHS EQuIP
Gippsland Region		
Bairnsdale Regional Health Service	12 August 2002	ACHS EQuIP
Central Gippsland Health Service - Sale Campus ⁶	29 May 2000	ACHS EQuIP
Far East Gippsland Health & Support Service	13 July 2002	ACHS EQuIP
Gippsland Southern Health Service	1 June 2000	ACHS EQuIP
West Gippsland Healthcare Group	18 December 2003	ACHS EQuIP
Yarram & District Health Service	29 July 2002	ACHS EQuIP

⁴ South West Healthcare will be surveyed for accreditation as a single entity in May 2002.

⁵ East Wimmera Health Service will be surveyed for accreditation as a single entity in November 2001.

⁶ Central Gippsland Health Service will be surveyed for accreditation as a single entity in April 2000.

**Table 6.1 Accredited hospitals that are funded through the Acute Health Division, Department of Human Services
as at 31 December 1999 (continued)**

Hospital	Accreditation expiry date	Accrediting organisation
Hume Region		
Alexandra District Hospital	3 December 2000	ACHS EQuIP
Beechworth Hospital, The	20 February 2001	ACHS EQuIP
Benalla & District Memorial Hospital	18 August 2002	ACHS EQuIP
Cobram District Hospital	18 August 2001	ACHS EQuIP
Goulburn Valley Health	9 December 2001	ACHS EQuIP
Mansfield District Hospital ⁷	September 2002	ISO 9002
Numurkah & District Health Service	5 January 2001	ACHS EQuIP
Tallangatta Health Service	25 August 2002	ACHS EQuIP
Upper Murray Health & Community Services	December 2002	QICSA
Wangaratta District Base Hospital	18 November 2001	ACHS EQuIP
Wodonga Regional Health Service	20 December 2002	ACHS EQuIP
Yarrawonga District Health Service	15 January 2002	ACHS EQuIP
Yea & District Memorial Hospital	9 November 2002	ACHS EQuIP
Loddon Mallee Region		
Bendigo Health Care Group	14 May 2002	ACHS EQuIP
Boort District Hospital	19 January 2001	ACHS EQuIP
Cohuna District Hospital	22 April 2000	ACHS EQuIP
Echuca Regional Health	31 May 2002	ACHS EQuIP
Inglewood & District Health Service	28 April 2000	ACHS EQuIP
Kerang & District Hospital	3 September 2002	ACHS EQuIP
Kyabram & District Memorial Community Hospital	15 December 2002	ACHS EQuIP
Kyneton District Health Service	19 May 2001	ACHS EQuIP
Maldon Hospital	11 May 2000	ACHS EQuIP
Maryborough District Health Service	7 June 2002	ACHS EQuIP
McIvor Health & Community Services	28 October 2001	ACHS EQuIP
Mildura Base Hospital	4 February 2000	ACHS EQuIP
Mt Alexander Hospital	13 September 2000	ACHS EQuIP
Rochester & Elmore District Health Service	November 2002	ISO 9002
Swan Hill District Hospital	24 February 2002	ACHS EQuIP

⁷ Mansfield District Hospital was incorrectly omitted from the list of accredited hospitals as at June 30 1999 published in the June Quarter 1999 Hospital Services Report.

7. Glossary

What Do the Terms Used in this Report Mean?

Admitted Patient

Someone who is an inpatient in a hospital. Sameday patients who are admitted for less than 24 hours are also counted as inpatients but people who attend hospital for outpatient clinics are not.

Cancellation

The request for elective surgery has been withdrawn and the patient is removed from this hospital's Waiting List without admission for the awaited procedure. This can occur for clinical reasons, transfer of the patient to another hospital, or at the request of the patient.

Casemix Funded

A system of funding hospitals according to the actual number and type of services that they provide. Casemix funding was introduced for most Victorian public hospitals in July 1993.

Coronary Care

A hospital unit with specialised staff and equipment to care for patients with heart disease.

Elective Admission

A planned admission to hospital. Emergency admissions and transfers from other hospitals are not counted as elective admissions.

Elective Surgery

Planned surgery that is not an emergency requiring hospital admission within 24 hours.

Emergency Admission

An unplanned admission to hospital due to unexpected illness or injury that requires urgent care.

Emergency Department

A hospital department that specialises in providing emergency care for people who are in need of urgent care (ambulance cases for example) and people who choose to seek treatment in an emergency department.

Health Care Network

A group of community acute hospitals, psychiatric services, tertiary acute hospitals and aged care services in the metropolitan area that is managed by a single board of directors.

Intensive Care

A hospital unit with specialised staff and equipment to provide continuous care for critically ill, injured or post-operative patients.

Non Sameday Patient

In the context of this report, a non sameday patient is an inpatient who leaves hospital on a later date than when they were admitted.

Separation

When an inpatient leaves a hospital. This is the technical way of counting the number of inpatients treated by a hospital.

Step Down Bed

Hospital beds with specialised staff and equipment to care for patients who no longer need coronary or intensive care but are not yet ready to move to a general hospital ward.

Transfer

When an inpatient is moved from one hospital to another. This might be in order to obtain a specialised treatment not available at the first hospital or because of the patient's preferences.

Waiting List Hospital

A major public hospital that performs elective surgery for public patients and uses a waiting list to properly keep track of people who require elective surgery.