

Hospital Services Report

December 1997 Quarter

Notes

This document contains the most up-to-date information available at the time of preparation.

This *Hospital Services Report* is available on the Department of Human Services Internet site located at:
<http://hna.ffh.vic.gov.au/ahs/pub.htm>

Design and production by Department of Human Services.

December 1997

Contents

Introduction	1
1. “Foothold on Safety” falls prevention program	2
2. Private Health Insurance	5
3. Hospital Admitted Patient Activity	6
4. Access to Emergency Services	10
5. Access to Critical Care Services	18
6. Access to Elective Surgery	19
7. Glossary	31

Introduction

Consumers, health care providers and government all need information on the quality of health services. Public access to information assists consumers to understand the health care system, it assists providers of health services in planning and increases the accountability of the Department of Human Services to the people in the state of Victoria, Australia.

The *Hospital Services Report* was introduced in 1995. As new information on the quality of health services becomes available to the Department, it is included in subsequent editions of the report so that consumers are progressively better informed. This edition includes data for the December Quarter 1997, which covers the months of October, November and December.

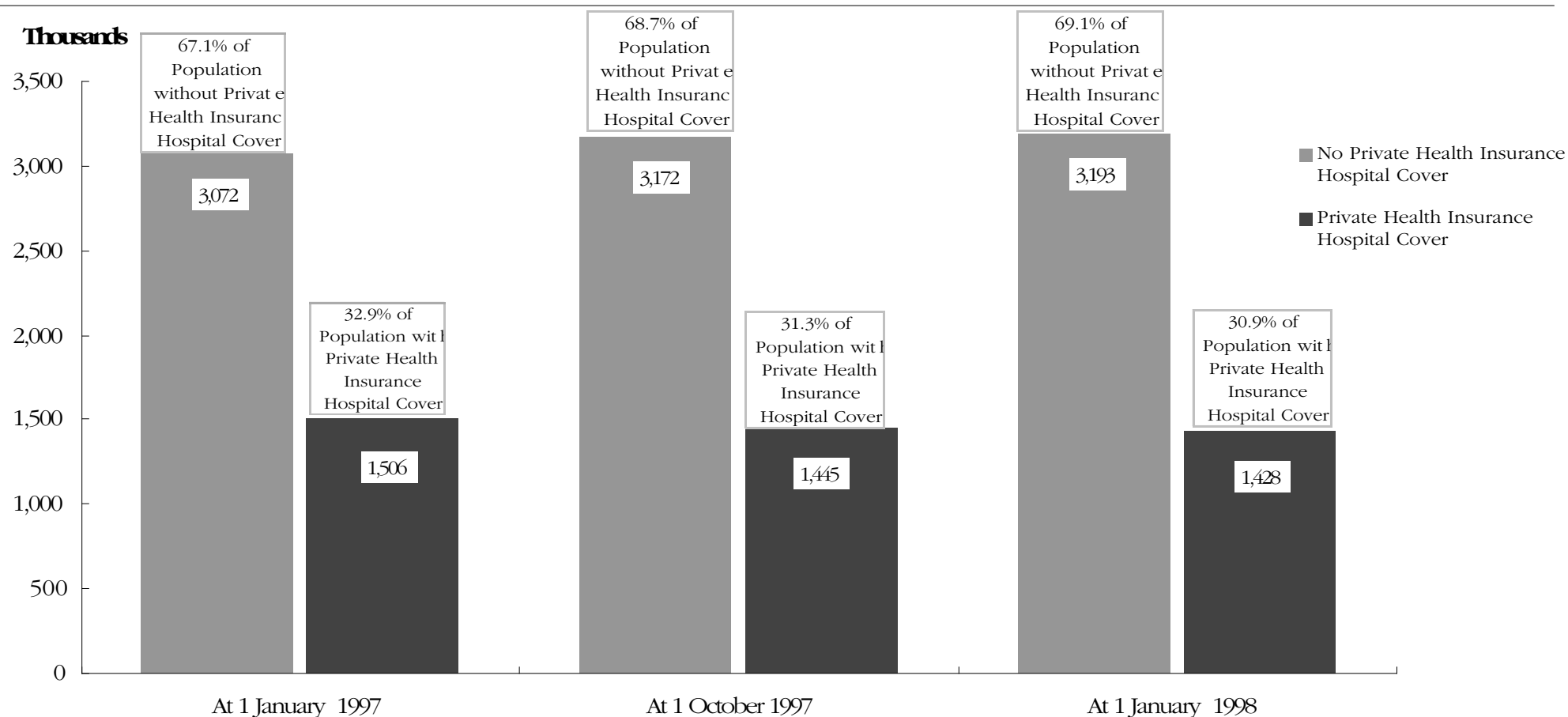
This edition includes a special feature on the statewide "Foothold on Safety" program which addresses preventing falls amongst older people in Victoria.

The information included in this report is often requested from the Department. Since technical information of this nature is very difficult to interpret, each graph and table needs to be carefully considered in the context of the complexity of the health care system. Department staff, hospital staff, general practitioners and other health care professionals may be able to assist you to interpret this report.

2. Private Health Insurance

How many Victorians Rely Solely Upon the Public Hospital System?

Figure 2.1 Health Insurance Status of Victorians ^{1, 2, 3}



¹ Data are for all people covered by insurance, that is, contributors, partners and dependents.

² Data for current quarter is provisional.

³ Australian hospital insurance statistics include both basic and supplementary levels of insurance cover under the category of hospital insurance.

Basic hospital insurance provides sufficient benefits to fully cover shared ward accommodation in public hospitals.

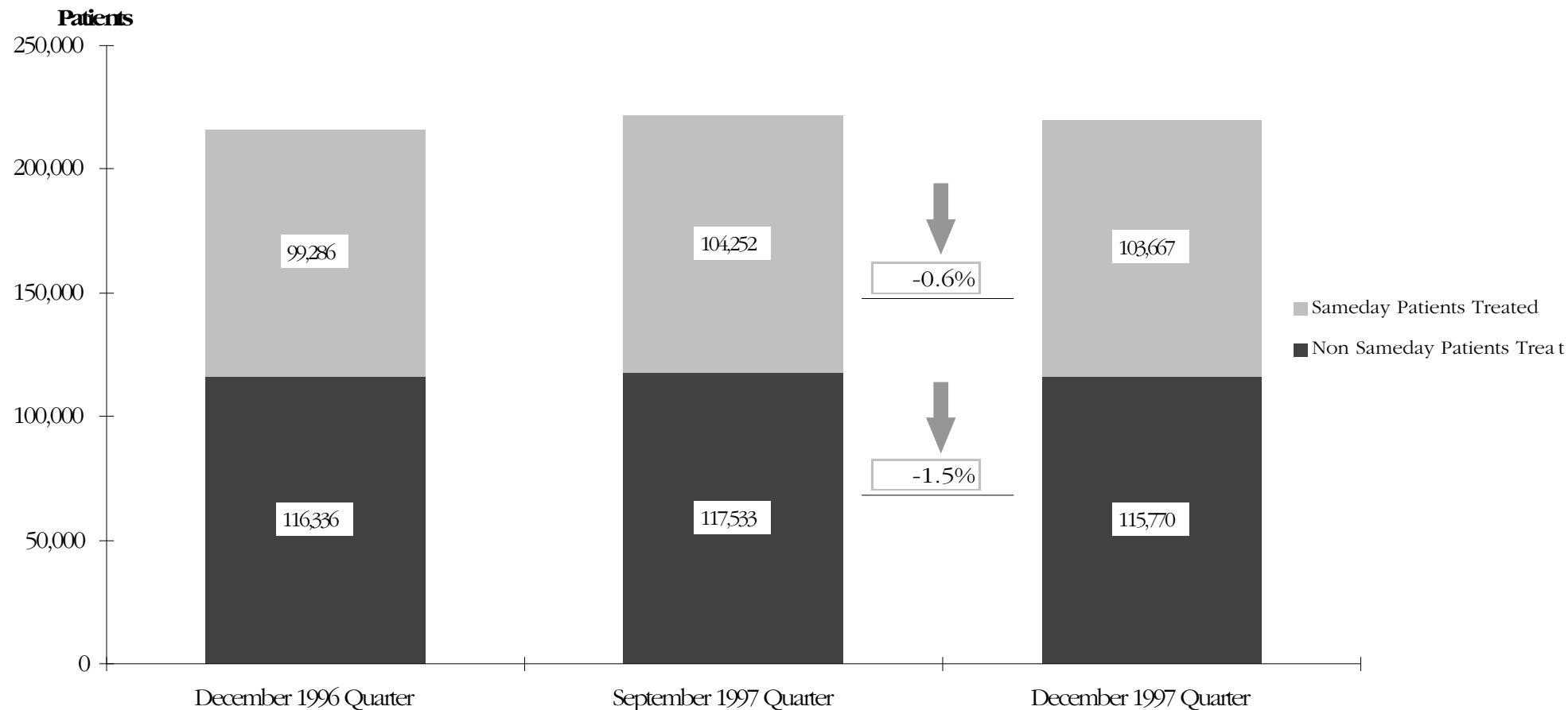
Supplementary hospital insurance provides additional benefits to meet most of the cost of accommodation in private hospitals.

Source: Private Health Insurance Administration Council

3. Hospital Admitted Patient Activity

How Many Patients Are Treated in Our Public Hospitals?

Figure 3.1 Admitted Patients in Public Hospitals ^{1, 2, 3}



¹ Data are for casemix-funded acute public hospital patients. The data refer to the number of 'separations' (ie. the number of patients that have been discharged from hospital).

² 1997/98 data is provisional.

³ 'Sameday' patients are admitted and discharged on the same day.

Source: Victorian Inpatient Minimum Database

Patients Treated in Each of Our Major Public Hospitals

Table 3.1 Admitted Patients by Individual Hospital ^{1, 2, 3, 4}

Hospital	December 1996 Quarter		September 1997 Quarter		December 1997 Quarter		September 1997 to December 1997		Change (%)
	Non Sameday Only	All	Non Sameday Only	All	Non Sameday Only	All	Non Sameday Only	All	
North Western Health Care Network									
Royal Melbourne Hospital	5,959	13,873	6,530	15,146	6,372	15,266	-2.4%	0.8%	
Western Hospital	6,287	11,289	6,558	11,849	6,619	12,352	0.9%	4.2%	
Preston & Northcote Community Hospital	3,442	5,416	3,123	5,181	3,512	5,535	12.5%	6.8%	
Other Hospitals	2,488	4,482	2,380	4,682	2,493	4,873	4.7%	4.1%	
Sub Total North Western Health Care Network	18,176	35,060	18,591	36,858	18,996	38,026	2.2%	3.2%	
Inner and Eastern Health Care Network									
Alfred Healthcare Group	4,332	10,819	4,711	11,734	4,797	10,121	1.8%	-13.7%	
Angliss Hospital	2,288	3,498	2,692	3,876	2,744	3,962	1.9%	2.2%	
Box Hill Hospital	3,938	6,340	4,120	6,790	4,017	6,767	-2.5%	-0.3%	
Maroondah Hospital	2,102	3,803	1,980	3,740	1,929	3,512	-2.6%	-6.1%	
Peter MacCallum Cancer Institute	1,213	2,507	1,338	2,886	1,347	2,980		3.3%	
Royal Victorian Eye and Ear Hospital	1,997	3,150	1,832	3,220	1,759	3,244	-4.0%	0.7%	
St. Vincent's Hospital	4,110	9,500	3,886	9,252	3,747	8,961	-3.6%	-3.1%	
Other Hospitals	2,964	5,879	2,016	3,842	1,944	3,666	-3.6%	-4.6%	
Sub Total Inner & Eastern Health Care Network	22,944	45,496	22,575	45,340	22,284	43,213	-1.3%	-4.7%	

¹ Data are for casemix-funded acute public hospital patients. The data refer to the number of "separations"(ie. the number of patients that have been discharged from hospital).

² 1997/98 data is provisional.

³ "Non Sameday" patients remain in hospital overnight or longer.

⁴ Data from two non-metropolitan hospitals is unavailable due to testing of new data submission processes. An estimate based on throughput for September 1996 quarter has been included for West Wimmera Hospital, and December 1996 quarter for West Wimmera and Latrobe Regional Hospitals for comparative purposes.

Table 3.1 Admitted Patients by Individual Hospital (Cont'd)

Hospital	December 1996 Quarter		September 1997 Quarter		December 1997 Quarter		September 1997 to December 1997		Change (%)
	Non Sameday Only	All	Non Sameday Only	All	Non Sameday Only	All	Non Sameday Only	All	
Southern Health Care Network									
Dandenong Hospital	3,973	5,957	4,216	6,433	4,358	6,428	3.4%	-0.1%	
Monash Medical Centre	7,014	15,081	7,449	16,672	7,614	16,959	2.2%	1.7%	
Sandringham & District Memorial Hospital	1,211	1,933	1,214	1,823	1,220	1,836	0.5%	0.7%	
Other Hospitals	152	284	-	-	-	-	-	-	
Sub Total Southern Health Care Network	12,350	23,255	12,879	24,928	13,192	25,223	2.4%	1.2%	
Peninsula Health Care Network									
Frankston Hospital	4,624	9,114	4,787	9,244	4,770	9,580	-0.4%	3.6%	
Sub Total Peninsula Health Care Network	4,624	9,114	4,787	9,244	4,770	9,580	-0.4%	3.6%	
Women's and Children's Health Care Network									
Royal Children's Hospital	4,545	7,429	4,851	7,679	4,552	7,560	-6.2%	-1.5%	
Royal Women's Hospital	3,689	7,930	3,697	8,055	3,551	7,784	-3.9%	-3.4%	
Sub Total Women's & Children's Health Care Network	8,234	15,359	8,548	15,734	8,103	15,344	-5.2%	-2.5%	
Metropolitan Non-Network Hospitals									
Austin and Repatriation Medical Centre	6,131	14,985	5,858	15,026	5,790	15,214	-1.2%	1.3%	
Mercy Hospital for Women	2,336	3,300	2,173	3,403	2,175	3,283	0.1%	-3.5%	
Sub Total A&RMC	8,467	18,285	8,031	18,429	7,965	18,497	-0.8%	0.4%	

Table 3.1 Admitted Patients by Individual Hospital (Cont'd)

Hospital	December 1996 Quarter		September 1997 Quarter		December 1997 Quarter		September 1997 to		Change (%)
	Non Sameday Only	All	Non Sameday Only	All	Non Sameday Only	All	Non Sameday Only	December 1997	All
Non Metropolitan Hospitals									
Ballarat Base Hospital	2,933	4,918	2,943	5,249	3,001	5,453	2.0%		3.9%
Bendigo Health Care Group	2,693	4,398	2,764	4,502	2,693	4,412	-2.6%		-2.0%
Central Wellington Health Services	1,088	1,833	1,099	1,787	1,040	1,732	-5.4%		-3.1%
Geelong Hospital	5,017	8,593	5,093	8,842	5,040	8,610	-1.0%		-2.6%
Goulburn Valley Base Hospital	2,308	3,229	2,369	3,406	2,187	3,173	-7.7%		-6.8%
Hamilton Base Hospital	771	1,287	909	1,612	727	1,381	-20.0%		-14.3%
Latrobe Regional Hospital	2,324	4,889	2,356	5,044	2,324	4,889	-1.4%		-3.1%
Wangaratta District Base Hospital	1,411	2,416	1,520	2,329	1,457	2,461	-4.1%		5.7%
Warrnambool & District Base Hospital	1,887	3,073	1,745	3,013	1,756	3,006	0.6%		-0.2%
West Gippsland Hospital	1,003	2,222	1,040	1,992	1,010	2,005	-2.9%		0.7%
Wodonga Regional Health Service	1,221	2,328	1,412	2,911	1,252	2,811	-11.3%		-3.4%
Other	18,885	29,867	19,207	31,011	18,246	29,996	-5.0%		-3.3%
Sub Total Non Metropolitan Hospitals	41,541	69,053	42,457	71,698	40,733	69,929	-4.1%		-2.5%
Total All Public Hospital	116,336	215,622	117,868	222,231	116,043	219,812	-1.5%		-1.1%

Source: Victorian Inpatient Minimum Database

4. Access to Emergency Services

How Many Patients Are Treated in Our Hospital Emergency Departments?

Table 4.1: Patients Treated in Hospital Emergency Departments^{1, 2}

	December 1996 Quarter	September 1997 Quarter	December 1997 Quarter	September 1997 to December 1997	Change (%)
Patients Treated	157,994	160,230	165,205		3.1%

¹ Data only for hospitals participating in the Emergency Services Enhancement Program. A complete list of these hospitals is given in Table 4.2.

² As the Mercy Hospital and the Royal Women's Hospital are not participants in the 1997-98 Emergency Services Enhancement Program, their figures have been excluded from data prior to July 1997 to enable comparative interpretation of the data.

Source: Victorian Emergency Minimum Dataset

Patients Treated in the Emergency Department of Each of Our Major Public Hospitals

Table 4.2 Patients Treated in Hospital Emergency Departments, by Individual Hospitals^{1, 2, 3, 4}

Hospital	December 1996 Quarter	September 1997 Quarter	December 1997 Quarter	September 1997 to December 1997	Change (%)
North Western Health Care Network					
Preston & Northcote Community Hospital	9,437	8,339	8,955		7.4%
Royal Melbourne Hospital	9,661	10,229	10,519		2.8%
Western Hospital	14,867	15,329	15,775		2.9%
Inner and Eastern Health Care Network					
Alfred Healthcare Group	10,450	9,764	10,406		6.6%
Angliss Hospital	7,680	7,793	8,557		9.8%
Box Hill Hospital	7,900	7,974	8,081		1.3%
Maroondah Hospital	6,677	6,202	6,863		10.7%
St. Vincent's Hospital	5,913	5,621	5,915		5.2%
Southern Health Care Network					
Dandenong Hospital	9,217	9,761	9,909		1.5%
Monash Medical Centre	11,618	12,391	12,594		1.6%
Peninsula Health Care Network					
Frankston Hospital	7,010	7,195	7,276		1.1%

¹ Data only for hospitals participating in the Emergency Services Enhancement Program.

² Data include all emergency department patients, that is, they include patients who are subsequently admitted to hospital and patients who are treated in the emergency department without being admitted to hospital.

³ Note that some hospitals have multiple campuses and may operate separate emergency departments on each campus.

⁴ As the Mercy Hospital and the Royal Women's Hospital are not participants in the 1997-98 Emergency Services Enhancement Program, their figures have been excluded from data prior to July 1997 to enable comparative interpretation of the data.

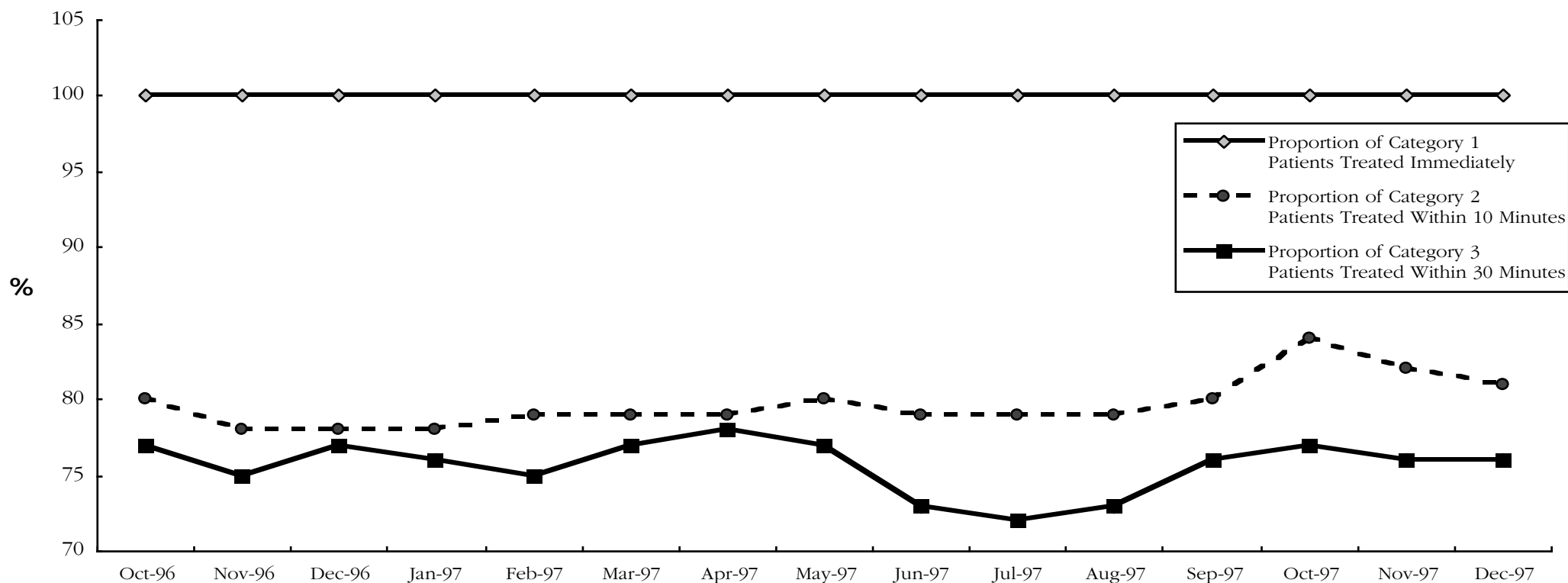
Table 4.2 Patients Treated in Hospital Emergency Departments, by Individual Hospitals Cont'd

Hospital	December 1996 Quarter	September 1997 Quarter	December 1997 Quarter	September 1997 to December 1997	Change (%)
Women's and Children's Health Care Network					
Royal Children's Hospital	13,864	15,274	13,692		-10.4%
Metropolitan Non-Network Hospitals					
Austin and Repatriation Medical Centre	9,296	8,721	8,957		2.7%
Non Metropolitan Hospitals					
Ballarat Base Hospital	7,570	7,657	7,587		-0.9%
Bendigo Health Care Group	6,165	7,068	7,686		8.7%
Geelong Hospital	8,270	8,449	9,015		6.7%
Goulburn Valley Base Hospital	5,217	4,995	5,333		6.8%
Latrobe Regional Hospital	7,182	7,468	8,085		8.3%
Total All Public Hospital	157,994	160,230	165,205		3.1%

Source: Victorian Emergency Minimum Dataset

How many Patients, Classified According to Need, Are Treated Within Ideal Times in Our Hospital Emergency Departments?

Figure 4.1: Emergency Department Achievement of ACEM Waiting Times by Triage Category^{1, 2, 3, 4}



¹ Waiting times are calculated as the time between presentation at the emergency department and commencement of treatment. The following Australasian College for Emergency Medicine (ACEM) patient categories and recommended treatment times are used:

Category 1: Resuscitation case requiring immediate treatment, for example, major trauma, cardiac arrest, unconsciousness, shock.

Category 2: Emergency case requiring treatment within 10 minutes, for example, severe trauma, chest pain, severe pain, severe breathing difficulty.

Category 3: Urgent case requiring treatment within 30 minutes, for example, moderate trauma, infection, breathing difficulty.

² Variation in waiting times may reflect delays in clerical data entry rather than delays in clinical response.

³ Data only for hospitals participating in the Emergency Services Enhancement Program.

⁴ As the Mercy Hospital and the Royal Women's Hospital are not participants in the 1997-98 Emergency Services Enhancement Program, their figures have been excluded from data prior to July 1997 to enable comparative interpretation of the data.

Patients, Classified According to Need, Who Are Treated within Ideal Times in Each of Our Hospital Emergency Departments

Table 4.3: Emergency Department Achievement of ACEM Waiting Times by Triage Category, by Individual Hospital: December 1997 Quarter

1, 2, 3

Hospital	Category 1 Patients		Category 2 Patients		Category 3 Patients	
	Number of Patients	Treated Immediately	Number of Patients	Treated in 10 Minutes	Number of Patients	Treated in 30 Minutes
North Western Health Care Network						
Preston & Northcote Community Hospital	82	100%	264	81%	1,856	77%
Royal Melbourne Hospital	122	100%	1,036	83%	3,519	85%
Western Hospital	134	100%	729	87%	3,227	87%
Inner and Eastern Health Care Network						
Alfred Healthcare Group	235	100%	848	82%	2,594	79%
Angliss Hospital	11	100%	60	98%	1,286	73%
Box Hill Hospital	66	100%	312	87%	2,296	77%
Maroondah Hospital	55	100%	268	84%	1,674	74%
St. Vincent's Hospital	76	100%	229	84%	1,205	86%
Southern Health Care Network						
Dandenong Hospital	195	100%	920	71%	4,268	67%
Monash Medical Centre	138	100%	1,215	76%	4,606	72%
Peninsula Health Care Network						
Frankston Hospital	49	100%	260	88%	1,952	70%

¹ Data only for hospitals participating in the Emergency Services Enhancement Program (ESEP).

² (ACEM) Australasian College for Emergency Medicine.

³ As the Mercy Hospital and the Royal Women's Hospital are not participants in the 1997-98 Emergency Services Enhancement Program, their figures have been excluded from data prior to July 1997 to enable comparative interpretation of the data.

Table 4.3: Emergency Department Achievement of ACEM Waiting Times by Triage Category, by Individual Hospital (Cont'd)

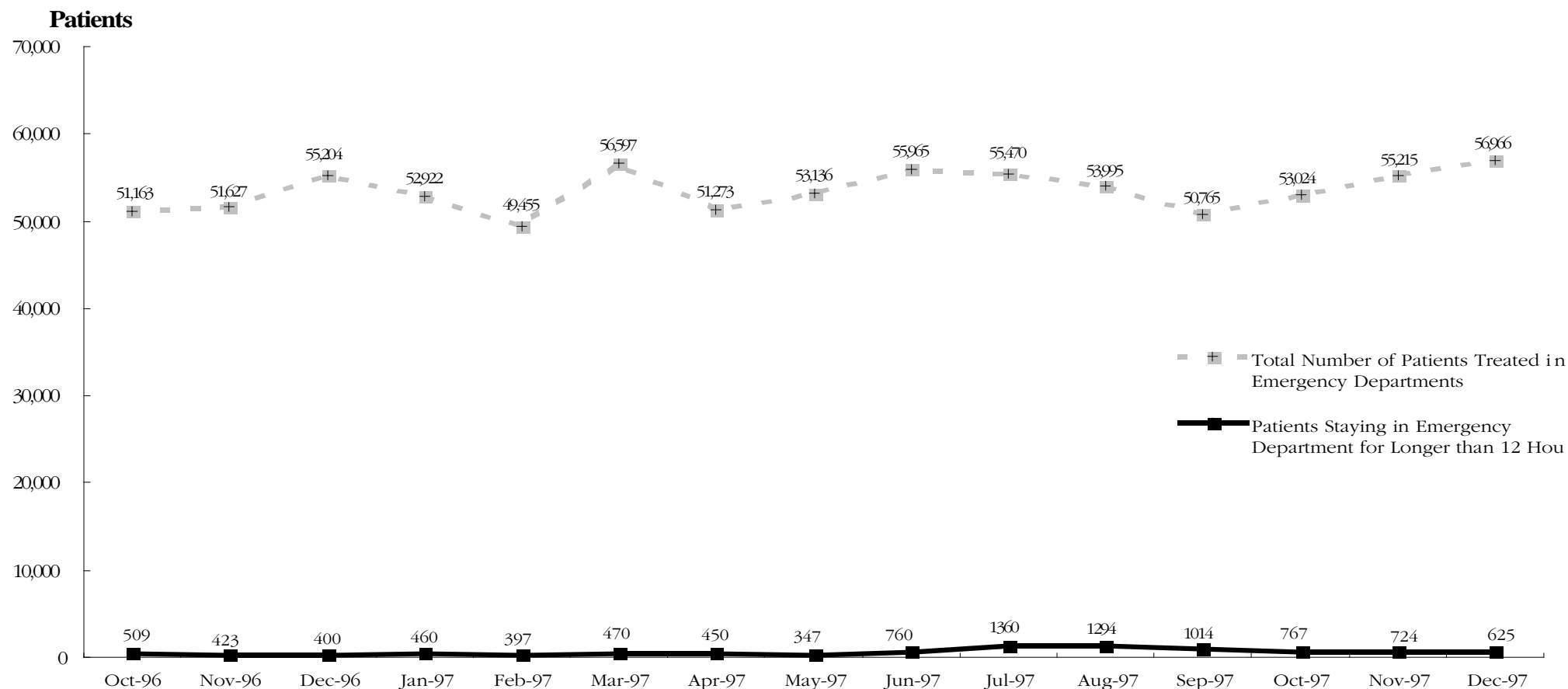
Hospital	Category 1 Patients		Category 2 Patients		Category 3 Patients	
	Number of Patients	Treated Immediately	Number of Patients	Treated in 10 Minutes	Number of Patients	Treated in 30 Minutes
Women's and Children's Health Care Network						
Royal Children's Hospital	55	100%	424	83%	3,159	77%
Metropolitan Non-Network Hospitals						
Austin and Repatriation Medical Centre	59	100%	696	78%	2,743	66%
Non Metropolitan Hospitals						
Ballarat Base Hospital	23	100%	162	86%	1,771	72%
Bendigo Health Care Group	18	100%	197	89%	1,235	78%
Geelong Hospital	82	100%	218	96%	1,908	86%
Goulburn Valley Base Hospital	30	100%	325	97%	1,562	81%
Latrobe Regional Hospital	56	100%	392	90%	1,205	85%
All ESEP Hospitals	1,486	100%	8,555	82%	42,066	76%

Source: Victorian Emergency Minimum Dataset

How many Patients Stay for an Extended Period in the Emergency Department?

1, 2, 3, 4

Figure 4.2: Patients Staying in Emergency Departments for Over 12 Hours While Waiting for a Hospital Bed



¹ The period of 'stay' is calculated from the time the patient arrives in the emergency department to the time when the patient leaves the emergency department.

² Data only for hospitals participating in the Emergency Services Enhancement Program.

³ An internal hospital review by the Alfred Health Care Group has resulted in amended figures for October and November 1996.

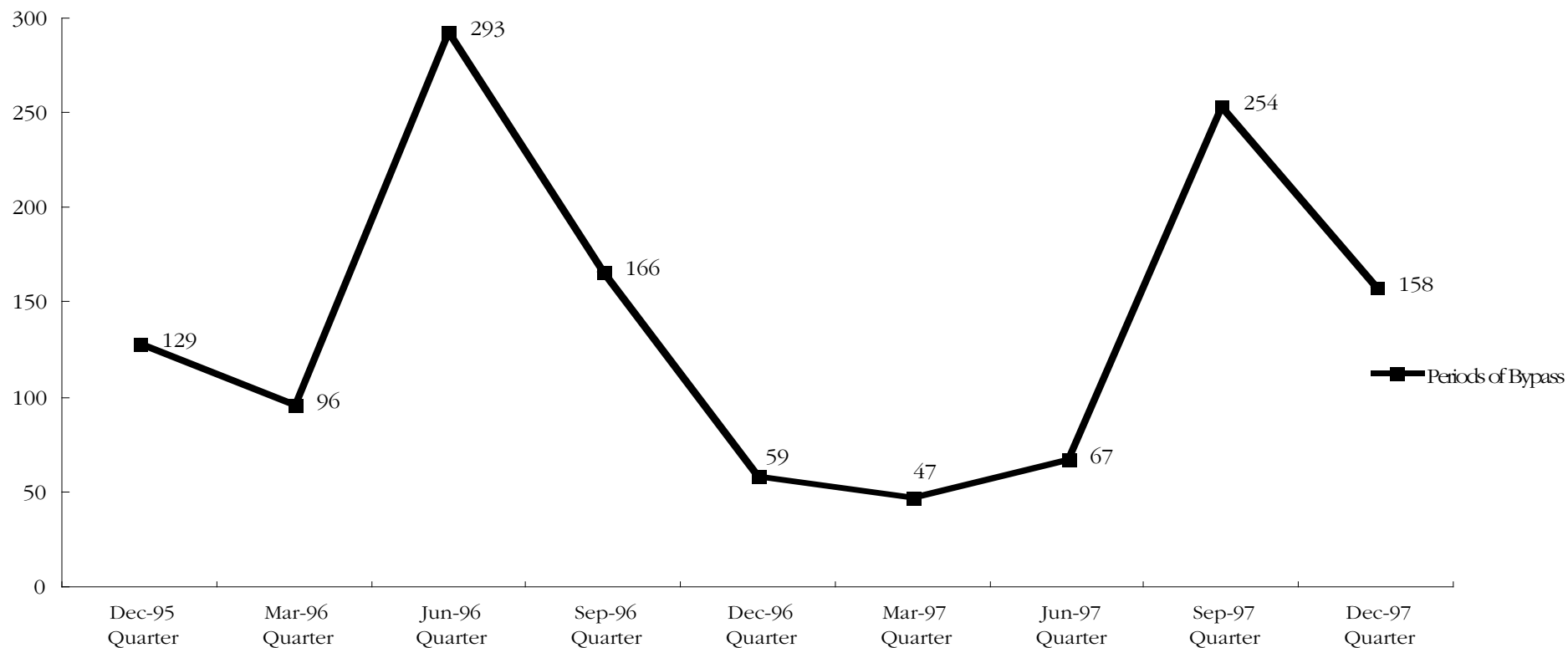
⁴ As the Mercy Hospital and the Royal Women's Hospital are not participants in the 1997-98 Emergency Services Enhancement Program, their figures have been excluded from data prior to enable comparative interpretation of the data. However, due to an administrative error the data reported in the September Hospital Services Report was not adjusted as stated. This gave inaccurate representation of decreased attendances in the September quarter.

Source: Victorian Emergency Minimum Dataset.

How Often Are Hospital Emergency Departments Too Busy, and Consequently Go on "Bypass"

Figure 4.4: Periods of Ambulance Bypass of Public Hospitals^{1,2}

Bypass Incidents



¹ Hospital emergency departments are bypassed by ambulances when the emergency department has reached maximum capacity and the treatment of patients already in the emergency department could be significantly compromised by the ambulance arrival of an additional patient requiring emergency treatment. Each individual period of ambulance bypass is for two hours or less.

² Data only for hospitals participating in the Emergency Services Enhancement Program.

³ Metropolitan Ambulance Service (MAS) response times are now being reported in MAS Response Report: A Quarterly Statistical Review of MAS, Melbourne. The 1st Issue (Feb 1998) of the Response Report reported on MAS response times for the December 1997 quarter. Copies of the Response Report can be obtained from MAS, Corporate Planning and Corporate Communications Unit, (03) 9840 3648.

5. Access to Critical Care Services

How Many Hospital Beds Are Available for Patients Who Need Intensive Care care?

Table 5.1: Average Number of Intensive Care Beds (Excluding Step-down Beds) Available and Open at 9.00a.m., by Month

	Oct-96	Nov-96	Dec-96	Jan-97	Feb-97	Mar-97	Apr-97	May-97	Jun-97	Jul-97	Aug-97	Sep-97	Oct-97	Nov-97	Dec-97
Available ²	5.2	5.8	8.1	8.6	12.6	8.8	8.3	8.2	5.9	2.4	1.7	3.4	4.2	6.8	6.3
Total Open ³	85.6	86.2	85.5	84.9	87.0	86.6	88.0	89.3	89.8	91.1	90.6	85.9	85.5	84.1	83.7

¹ Based upon hospital census taken at 9.00a.m. daily.

² Available beds are unoccupied beds which are staffed, functional and available to receive new patients.

³ Total open beds are all functioning and staffed beds, regardless of whether they are occupied.

Source: Office of the Coordinator of Emergency and Critical Care Services.

How Many Hospital Beds Are Available for Patients Who Need Coronary Care care?

Table 5.2: Average Number of Coronary Care Beds (Excluding Step-down Beds) Available and Open at 9.00a.m., by Month²

	Oct-96	Nov-96	Dec-96	Jan-97	Feb-97	Mar-97	Apr-97	May-97	Jun-97	Jul-97	Aug-97	Sep-97	Oct-97	Nov-97	Dec-97
Available	10.8	6.1	9.0	12.1	13.7	8.5	7.9	6.4	6.4	5.4	6.5	7.3	9.5	10.3	9.1
Total Open	79.1	79.7	79.5	75.8	80.7	79.6	78.2	80.9	78.6	77.9	74.5	78.4	77.6	79.1	77.6

¹ Notes under Table 5.1 apply.

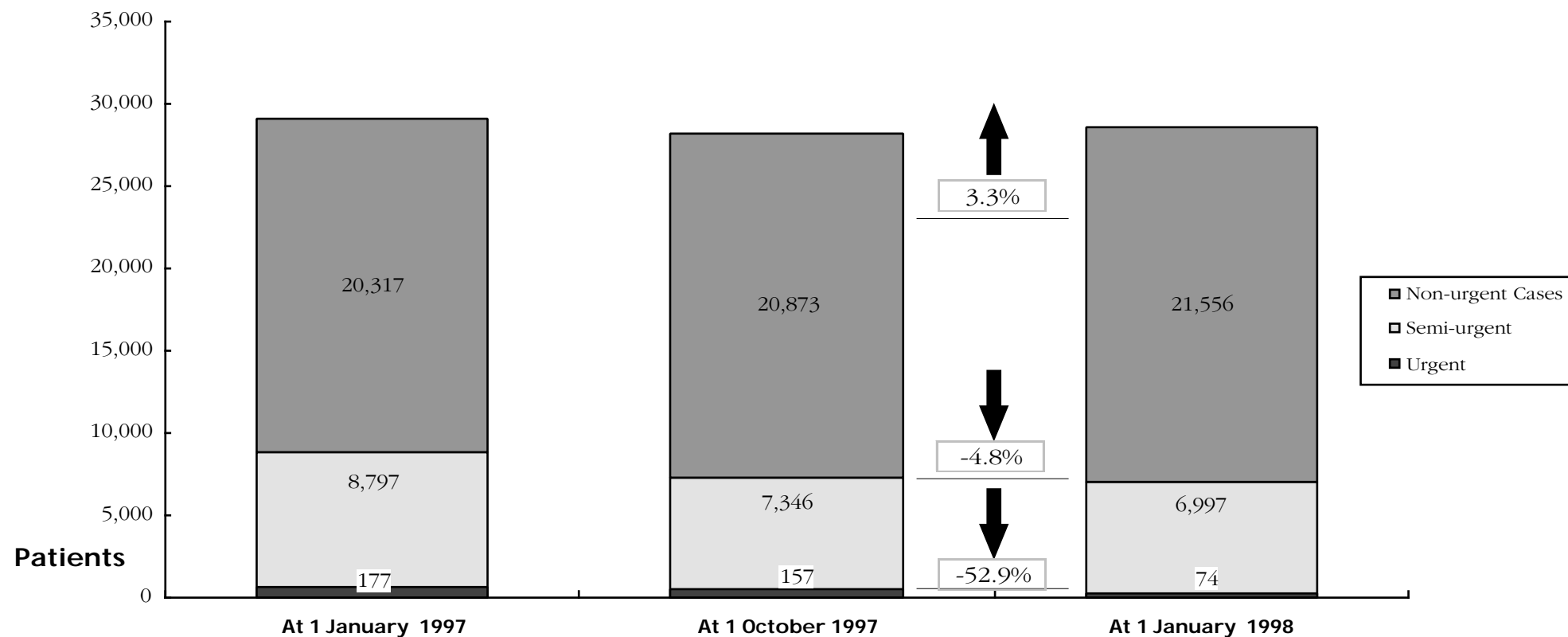
² Bed numbers for January 1997 have been amended. Figures in previous reports were incorrectly calculated

Source: Office of the Coordinator of Emergency and Critical Care Services

6. Access To Elective Surgery

How many People, Classified According to Need, Are on the Waiting List?

Figure 6.1: Waiting List by Patient Category ^{1, 2}



¹ The waiting list patient categories are:

- i Urgent cases (waiting list category 1): Very urgent admission desirable for a condition that has the potential to deteriorate quickly, to the point that it may become an emergency. Admission within 30 days is desirable.
- i Semi-urgent cases (waiting list category 2): Admission within 90 days acceptable for a condition causing some pain, dysfunction or disability but which is not likely to deteriorate quickly or become an emergency.
- i Non-urgent cases (waiting list category 3): Admission at some time in the future acceptable for a condition causing minimal or no pain, dysfunction or disability which is very unlikely to deteriorate quickly and which does not have the potential to become an emergency.

² Last quarter's reported figures for as at 1 October 1997 have been revised for the report this quarter due to system changes in hospitals.

The Waiting List Patient Categories For Major Public Hospitals

Table 6.1 Waiting List by Patient Category, by Individual Hospital ^{1, 2}₃

Hospital	Urgent Cases			Semi Urgent Cases				Non Urgent Cases			
	1 Jan 1997	1 Oct 1997	1 Jan 1998	1 Jan 1997	1 Oct 1997	1 Jan 1998	Change % Oct 1997 to Jan 1998	1 Jan 1997	1 Oct 1997	1 Jan 1998	Change % Oct 1997 to Jan 1998
North Western Health Care Network											
Preston & Northcote Community Hospital	0	0	3	265	210	223	6%	2,055	1,611	1,654	3%
Royal Melbourne Hospital	71	45	24	594	439	497	13%	1,510	1,335	1,380	3%
Western Hospital	0	4	4	219	247	221	-11%	1,543	2,042	1,940	-5%
Inner and Eastern Health Care Network											
Alfred Healthcare Group	49	31	18	627	432	464	7%	774	764	820	7%
Angliss Hospital	0	0	4	18	2	19	850%	307	262	265	1%
Box Hill Hospital	0	0	0	97	126	165	31%	463	354	370	5%
Maroondah Hospital	3	2	0	119	70	81	16%	1,604	1,574	1,503	-5%
Peter MacCallum Cancer Institute	0	0	0	0	0	0	N/A	43	0	0	N/A
Royal Victorian Eye and Ear Hospital	0	0	0	1,907	1,422	1,588	12%	16	57	45	-21%
St. Vincent's Hospital	2	10	4	548	651	517	-21%	529	707	731	3%
Southern Health Care Network											
Dandenong Hospital	3	1	0	191	117	139	19%	1,096	1,112	1,152	4%
Monash Medical Centre	27	11	5	650	512	470	-8%	2,756	2,497	2,663	7%
Sandringham & District Memorial Hospital	0	0	0	0	21	2	-90%	84	356	365	3%
Peninsula Health Care Network											
Frankston Hospital	0	11	3	547	498	452	-9%	1,455	1,705	1,697	0%

¹ Note that for this and subsequent tables, the numbers involved may be small and therefore small absolute changes may result in large percentage changes.

² Peter MacCallum Cancer Institute, Central Wellington Health Service Hamilton Base Hospital and Warranambool and District Base Hospital no longer participate in the elective surgery enhancement program as of 1 July 1997.

³ Last quarter's reported figures for as at 1 October 1997 have been revised for the report this quarter due to system changes in hospitals.

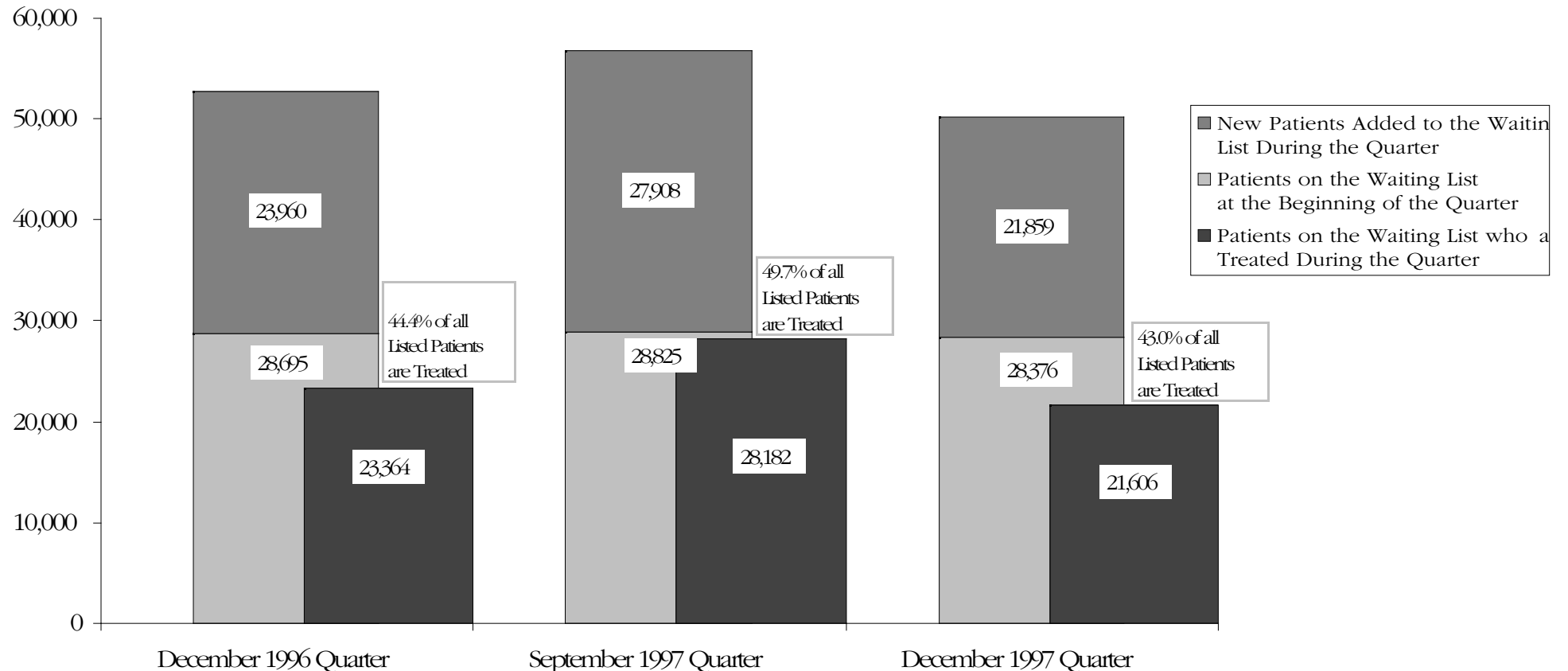
Table 6.1 Waiting List by Patient Category, by Individual Hospital Cont'd

Hospital	Urgent Cases			Semi Urgent Cases				Non Urgent Cases			
	1 Jan 1997	1 Oct 1997	1 Jan 1998	1 Jan 1997	1 Oct 1997	1 Jan 1998	Change % Oct 1997 to Jan 1998	1 Jan 1997	1 Oct 1997	1 Jan 1998	Change % Oct 1997 to Jan 1998
Women's and Children's Health Care Network											
Royal Children's Hospital	4	11	0	128	41	68	66%	575	617	529	-14%
Royal Women's Hospital	1	5	2	207	169	133	-21%	252	299	327	9%
Metropolitan Non-Network Hospitals											
Austin and Repatriation Medical Centre	15	16	5	1,248	1,017	893	-12%	1,529	1,480	1,621	10%
Non Metropolitan Hospitals											
Ballarat Base Hospital	0	4	1	629	565	208	-63%	576	652	965	6%
Bendigo Health Care Group	0	1	0	44	157	100	-36%	520	716	737	3%
Central Wellington Health Service	0	0	0	5	0	0	N/A	29	0	0	N/A
Geelong Hospital	0	5	1	180	266	345	30%	1,264	1,273	1,229	-3%
Goulburn Valley Base Hospital	0	0	0	141	182	247	36%	725	843	898	7%
Hamilton Base Hospital	0	0	0	16	0	0	N/A	23	0	0	N/A
Latrobe Regional Hospital	2	0	0	122	66	59	-11%	360	287	267	-7%
Wangaratta District Base Hospital	0	0	0	168	43	25	-42%	70	205	220	7%
Warrnambool and District Base Hospital	0	0	0	0	0	0	N/A	29	0	0	N/A
West Gippsland Hospital	0	0	0	127	93	81	-13%	130	125	178	42%
Total All Waiting List Hospitals	177	157	74	8,797	7,346	6,997	-5%	20,317	20,873	21,556	3%

Source: Hospital waiting list returns.

How many People Who Appear on the Waiting List Wait are Treated Each Quarter?

Figure 6.2: Waiting List Additions and Completed Cases ^{1, 2, 3}



¹ Note that this does not represent the size of the waiting list at any one point in time. Throughout the quarter, patients are continuously added to and treated from the waiting list according to assessment of need.

² Treated patients includes cases taken off the waiting list when they have undergone the planned procedure as well as cases booked to undergo the planned procedure and cases in which intended procedure is cancelled.

³ Last quarter's reported figures for September 1997 quarter have been revised for the report this quarter due to system changes in hospitals

People Who Appear on the Waiting List and Are Treated in Each of Our Major Public Hospitals

Table 6.2: Waiting List Additions and Completed Cases, by Individual Hospital: December 1997 Quarter¹

Hospital	Patients on the Waiting List as At 1 October 1997	New Patients Added During December 1997 Quarter	Total Patients Who Appear on the Waiting List during the Quarter	Patients on the Waiting List Who are Treated During the Quarter	Treated Patients as a Percentage of All Patients Who Appear on the List
North Western Health Care Network					
Preston & Northcote Community Hospital	1,821	1,207	3,028	1,148	37.9%
Royal Melbourne Hospital	1,819	1,623	3,442	1,541	44.8%
Western Hospital	2,293	911	3,204	1,039	32.4%
Inner and Eastern Health Care Network					
Alfred Healthcare Group	1,227	1,028	2,255	953	42.3%
Angliss Hospital	264	241	505	217	43.0%
Box Hill Hospital	480	553	1,033	498	48.2%
Maroondah Hospital	1,646	632	2,278	694	30.5%
Peter MacCallum Cancer Institute	N/A	N/A	N/A	N/A	N/A
Royal Victorian Eye and Ear Hospital	1,479	1,413	2,892	1,259	43.5%
St. Vincent's Hospital	1,368	806	2,174	922	42.4%
Southern Health Care Network					
Dandenong Hospital	1,230	710	1,940	649	33.5%
Monash Medical Centre	3,020	1,753	4,773	1,635	34.3%
Sandringham & District Memorial Hospital	377	271	648	281	43.4%
Peninsula Health Care Network					
Frankston Hospital	2,214	1,426	3,640	1,488	40.9%

¹ Peter MacCallum Cancer Institute, Central Wellington Health Service, Hamilton Base Hospital and Warrnambool and District Base Hospital no longer participate in the elective surgery enhancement program as of 1 July 1997.

² Last quarter's reported figures for as at 1 October 1997 have been revised for the report this quarter due to system changes in hospitals.

¹ Peter MacCallum Cancer Institute, Central Wellington Health Service, Hamilton Base Hospital and Warrnambool and District Base Hospital no longer participate in the elective surgery enhancement program as of 1 July 1997.

² Last quarter's reported figures for as at 1 October 1997 have been revised for the report this quarter due to system changes in hospitals.

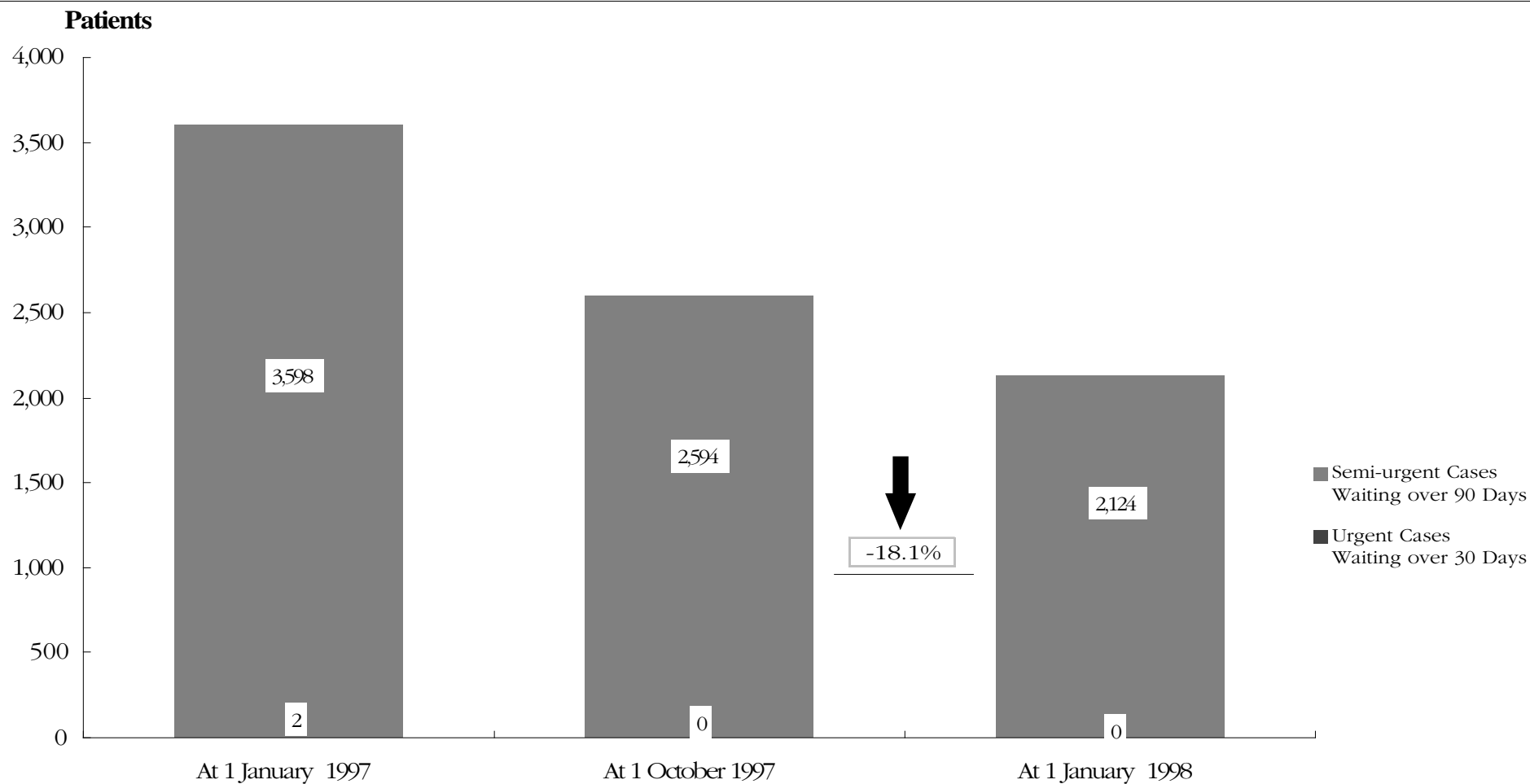
Table 6.2: Waiting List Additions and Completed Cases, by Individual Hospital (Cont'd)

Hospital	Patients on the Waiting List as At 1 October 1997	New Patients Added During December 1997 Quarter	Total Patients Who Appear on the Waiting List during the Quarter	Patients on the Waiting List Who are Treated During the Quarter	Treated Patients as a Percentage of All Patients Who Appear on the List
Women's and Children's Health Care Network					
Royal Children's Hospital	669	2,884	3,553	2,956	83.2%
Royal Women's Hospital	473	667	1,140	678	59.5%
Metropolitan Non-Network Hospitals					
Austin and Repatriation Medical Centre	2,513	1,522	4,035	1,514	37.5%
Non Metropolitan Hospitals					
Ballarat Base Hospital	1,221	508	1,729	555	32.1%
Bendigo Health Care Group	874	458	1,332	495	37.2%
Central Wellington Health Service	N/A	N/A	N/A	N/A	N/A
Geelong Hospital	1,544	1,102	2,646	1,071	40.5%
Goulburn Valley Base Hospital	1,025	699	1,724	579	33.6%
Hamilton Base Hospital	N/A	N/A	N/A	N/A	N/A
Latrobe Regional Hospital	353	417	770	444	57.7%
Wangaratta District Base Hospital	248	191	439	194	44.2%
Warrnambool and District Base Hospital	N/A	N/A	N/A	N/A	N/A
West Gippsland Hospital	218	837	1,055	796	75.5%
Total all Waiting List Hospitals	28,376	21,859	50,235	21,606	43.0%

Source: Hospital waiting list returns

How many People on the Waiting List Wait Longer than the Ideal?

Figure 6.3: Waiting List Exceeding Ideal Waiting Times, by Patient Category ¹



¹ Last quarter's reported figures for as at 1 October 1997 have been revised for the report this quarter due to system changes in hospitals.

² Waiting longer than ideal includes semi-urgent patients waiting over 90 days and urgent patients waiting over 30 days.

Source: Hospital waiting list returns.

People on the Waiting List Waiting Longer than the Ideal For Each of Our Major Public Hospitals

Table 6.3 Waiting List Exceeding Ideal Waiting Times by Patient Category, by Individual Hospital

Hospital	Urgent Cases Waiting over 30 Days				Semi Urgent Cases Waiting over 90 Days			
	1 Jan 1997	1 Oct 1997	1 Jan 1998	Change % Oct 1997 to Jan 1998	1 Jan 1997	1 Oct 1997	1 Jan 1998	Change % Oct 1997 to Jan 1998
Western Health Care Network								
Preston & Northcote Community Hospital	0	0	0	-	90	47	46	-2.1%
Royal Melbourne Hospital	0	0	0	-	178	135	143	5.9%
Western Hospital	0	0	0	-	85	67	60	-10.4%
Inner and Eastern Health Care Network								
Alfred Healthcare Group	0	0	0	-	307	88	94	6.8%
Angliss Hospital	0	0	0	-	0	0	2	100.0%
Box Hill Hospital	0	0	0	-	10	8	1	-87.5%
Peter MacCallum Cancer Institute	0	0	0	N/A	0	0	0	N/A
Maroondah Hospital	2	0	0	-	10	0	0	-
Royal Victorian Eye and Ear Hospital	0	0	0	-	786	611	576	-5.7%
St. Vincent's Hospital	0	0	0	-	211	254	148	-41.7%
Southern Health Care Network								
Dandenong Hospital	0	0	0	-	27	0	0	-
Monash Medical Centre	0	0	0	-	275	273	237	-13.2%
Sandringham & District Memorial Hospital	0	0	0	-	0	0	0	-
Peninsula Health Care Network								
Frankston Hospital	0	0	0	-	289	173	109	-37.0%

Source: Hospital waiting list returns.

Table 6.3 Waiting List Exceeding Ideal Waiting Times by Patient Category, by Individual Hospital Cont'd

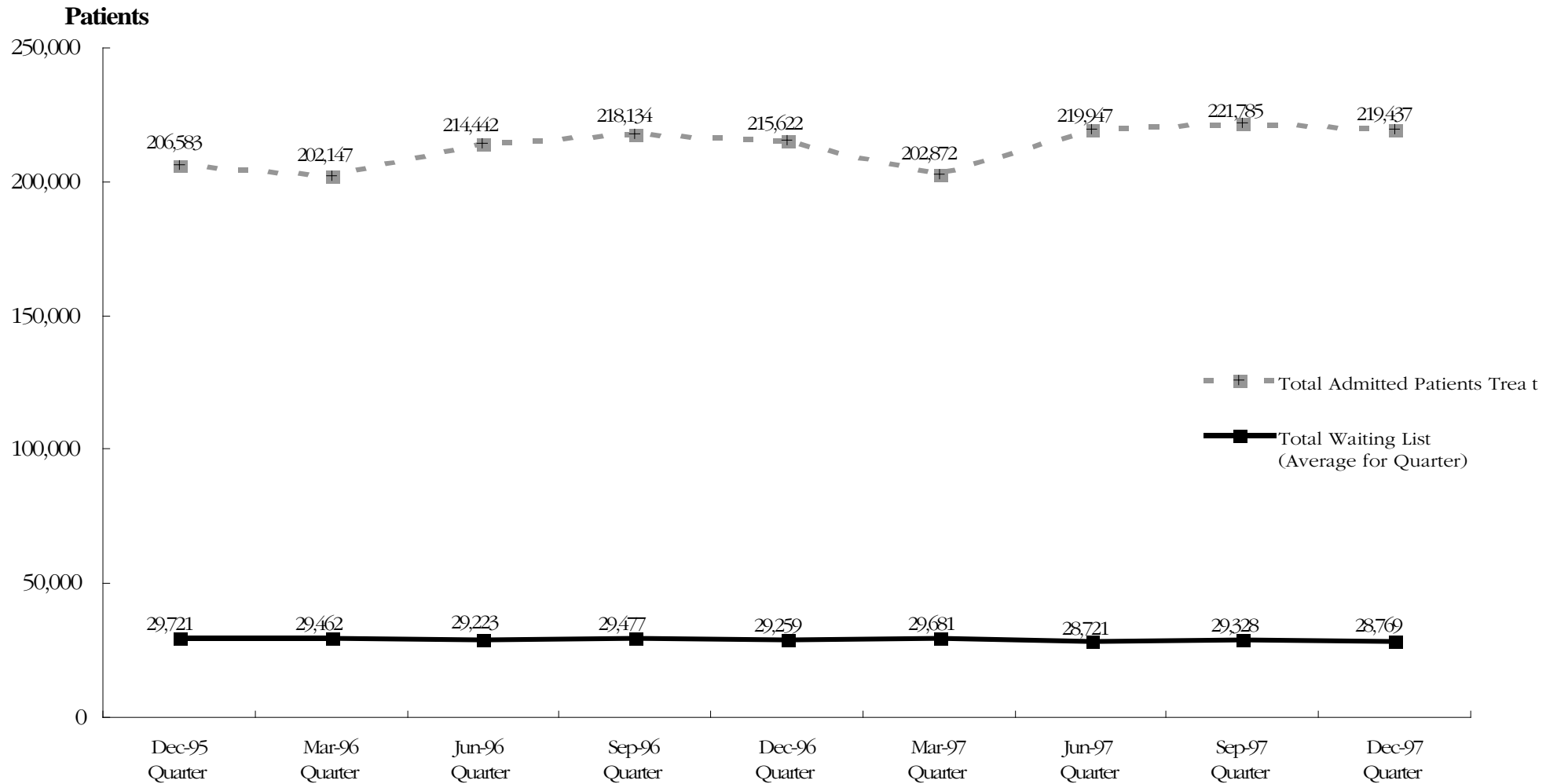
Hospital	Urgent Cases Waiting over 30 Days				Semi Urgent Cases Waiting over 90 Days			
	1 Jan 1997	1 Oct 1997	1 Jan 1998	Change % Oct 1997 to Jan 1998	1 Jan 1997	1 Oct 1997	1 Jan 1998	Change % Oct 1997 to Jan 1998
Women's and Children's Health Care Network								
Royal Children's Hospital	0	0	0	-	0	0	0	-
Royal Women's Hospital	0	0	0	-	36	17	0	-
Metropolitan Non-Network Hospitals								
Austin & Repatriation Medical Centre	0	0	0	-	743	464	445	-4.1%
Non Metropolitan Hospitals								
Ballarat Base Hospital	0	0	0	-	396	320	101	-68.4%
Bendigo Health Care Group	0	0	0	-	14	33	18	-45.5%
Central Wellington Health Service	0	0	0	N/A	0	0	0	N/A
Geelong Hospital	0	0	0	-	54	43	51	18.6%
Goulburn Valley Base Hospital	0	0	0	-	0	27	72	166.7%
Hamilton Base Hospital	0	0	0	N/A	0	0	0	N/A
Latrobe Regional Hospital	0	0	0	-	1	0	0	-
Wangaratta District Base Hospital	0	0	0	-	64	21	21	0.0%
Warrnambool and District Base Hospital	0	0	0	N/A	0	0	0	N/A
West Gippsland Hospital	0	0	0	-	22	13	0	-
Total All Waiting List Hospitals	2	0	0	-	3,598	2,594	2,124	-18.1%

¹ Last quarter's reported figures for as at 1 October 1997 have been revised for the report this quarter due to system changes in hospitals.

Source: Hospital waiting list returns.

How Does the Waiting List Compare to the Total Number of Patients Treated?

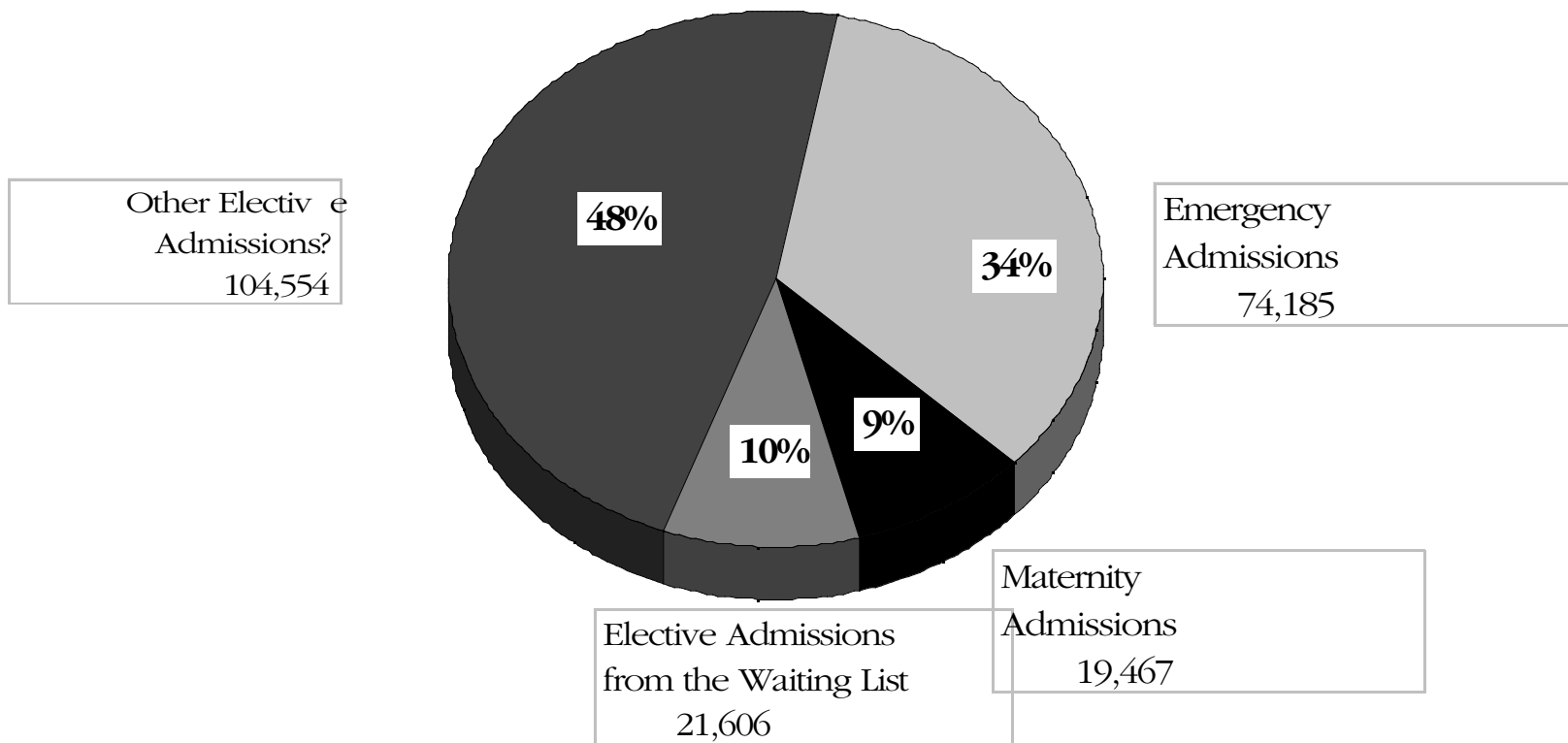
Figure 6.4: Waiting List Compared with Overall Admitted Patient Activity



Source: Victorian Inpatient Minimum Database, hospital waiting list returns.

How Much of Total Hospital Activity Comes from the Waiting List?

Figure 6.5: Separations by Admission Type: December 1997 Quarter^{2, 3, 4, 5}



¹ Includes statistical admissions, which refer to a change in patient care type.

² Patients on the waiting list who are treated during the quarter: see definition of treated patients given in Figure 3.1.

³ Includes maternity and newborns admissions.

⁴ Data from two non-metropolitan hospitals is unavailable due to testing of new data submission processes. For comparative purposes, an estimate based on throughput for December 1996 quarter has been included for West Wimmera and Latrobe Regional Hospitals.

⁵ Percentages may not add due to rounding.

How Many Patients are booked for Elective Sugery

Table 6.4 Booked Patients at Waiting List Hospitals¹

	December 1996 Quarter	September 1997 Quarter	December 1997 Quarter	September 1997 to December 1997	Change (%)
Booked Patients	9,142	10,543	8,459		-19.77%

In Victoria, the waiting list is used to coordinate patients who have been recommended for elective surgery but who cannot be *booked* in for admission to hospital because the demand for elective surgery at that hospital exceeds the resour available at that time. Patients are considered to be *booked* when they have been given a planned date within six weeks to be admitted for their elective surgery. *Booked* patients are separate to waiting list patients.

Note: Patients may be *booked* immediately at the time that they are referred for elective surgery or they may be booked after having waited on the waiting list. The ability of a hospital to offer bookings depends on a number of factors including (i) the urgency of the patient as determined by the treating surgeon, (ii) the suitability (fitness) of the patient to undergo surgery, and (iii) availability of resources, including appropriately skilled surgical staff, operating theatre facilities, recovery room facilities, and general ward accommodation.

¹ Last quarter's reported figures for September 1997 quarter have been revised for the report this quarter due to system changes in hospitals.

Source: Hospital waiting list returns

8. *Glossary*

What Do the Terms Used in this Report Mean?

Admitted Patient

Someone who is an inpatient in a hospital. Sameday patients who are admitted for less than 24 hours are also counted as inpatients but people who attend hospital for outpatient clinics are not.

Casemix Funded

A system of funding hospitals according to the actual number and type of services that they provide. Casemix funding was introduced for most Victorian public hospitals in July 1993.

Coronary Care

A hospital unit with specialised staff and equipment to care for patients with heart disease.

Elective Admission

A planned admission to hospital. Emergency admissions and transfers from other hospitals are not counted as elective admissions.

Elective Surgery

Planned surgery that is not an emergency requiring hospital admission within 24 hours.

Emergency Admission

An unplanned admission to hospital due to unexpected illness or injury that requires urgent care.

Emergency Department

A hospital department that specialises in providing emergency care for people who are in need of urgent care (ambulance cases for example) and people who choose to seek treatment in an emergency department.

Health Care Network

A group of community acute hospitals, psychiatric services, tertiary acute hospitals and aged care services in the metropolitan area that is managed by a single board of directors.

Intensive Care

A hospital unit with specialised staff and equipment to provide continuous care for critically ill, injured or post-operative patients.

Non Sameday Patient

In the context of this report, a non sameday patient is an inpatient who leaves hospital on a later date than when they were admitted.

Separation

When an inpatient leaves a hospital. This is the technical way of counting the number of inpatients treated by a hospital.

Step Down Bed

Hospital beds with specialised staff and equipment to care for patients who no longer need coronary or intensive care but are not yet ready to move to a general hospital ward.

Transfer

When an inpatient is moved from one hospital to another. This might be in order to obtain a specialised treatment not available at the first hospital or because of the patient's preferences.

Waiting List Hospital

A major public hospital that performs elective surgery for public patients and uses a waiting list to properly keep track of people who require elective surgery.

