

Hospital Services Report

December quarter 2002

Notes

This document contains the most up-to-date information available at the time of preparation.

This *Hospital Services Report* is available on the Department of Human Services Internet site located at:
<http://www.health.vic.gov.au/hsr/index.htm>

Design and production by Department of Human Services, Melbourne, Victoria.

December 2002

© Copyright Department of Human Services 2003.

This publication is copyright. No part may be reproduced by any process except in accordance with the provisions of the *Copyright Act 1968*.

Contents

<i>Introduction</i>	1
1. Patients waiting for residential aged care placement	2
2. Hospital admitted patient activity	4
3. Access to emergency services	6
4. Access to critical care services	15
5. Access to elective surgery	17
6. Private health insurance	28
7. Glossary	29

Introduction

Consumers, health care providers and government all need information on the quality of health services. Public access to information assists consumers to understand the health care system, it assists providers of health services in planning and increases the accountability of the Department of Human Services to the people in the state of Victoria, Australia.

The *Hospital Services Report* was introduced in 1995. This edition includes data for the December quarter 2002, which covers the months of October, November and December.

The information included in this report is often requested from the Department. Since technical information of this nature is very difficult to interpret, each graph and table needs to be carefully considered in the context of the complexity of the health care system. Department staff, hospital staff, general practitioners and other health care professionals may be able to assist you to interpret this report.

Access to Emergency Services

From 1 January 2002, emergency department data in this report are derived from electronic rather than paper-based reporting.

A number of graphs and tables refer to major metropolitan hospitals.

The major metropolitan hospitals include:

Angliss Hospital

Austin & Repatriation Medical Centre

- Austin campus

- Repatriation campus

Box Hill Hospital

Dandenong Hospital

Frankston Hospital

Maroondah Hospital

Monash Medical Centre

- Clayton campus

- Moorabbin campus

Royal Melbourne Hospital

St Vincent's Hospital

Sunshine Hospital

The Alfred

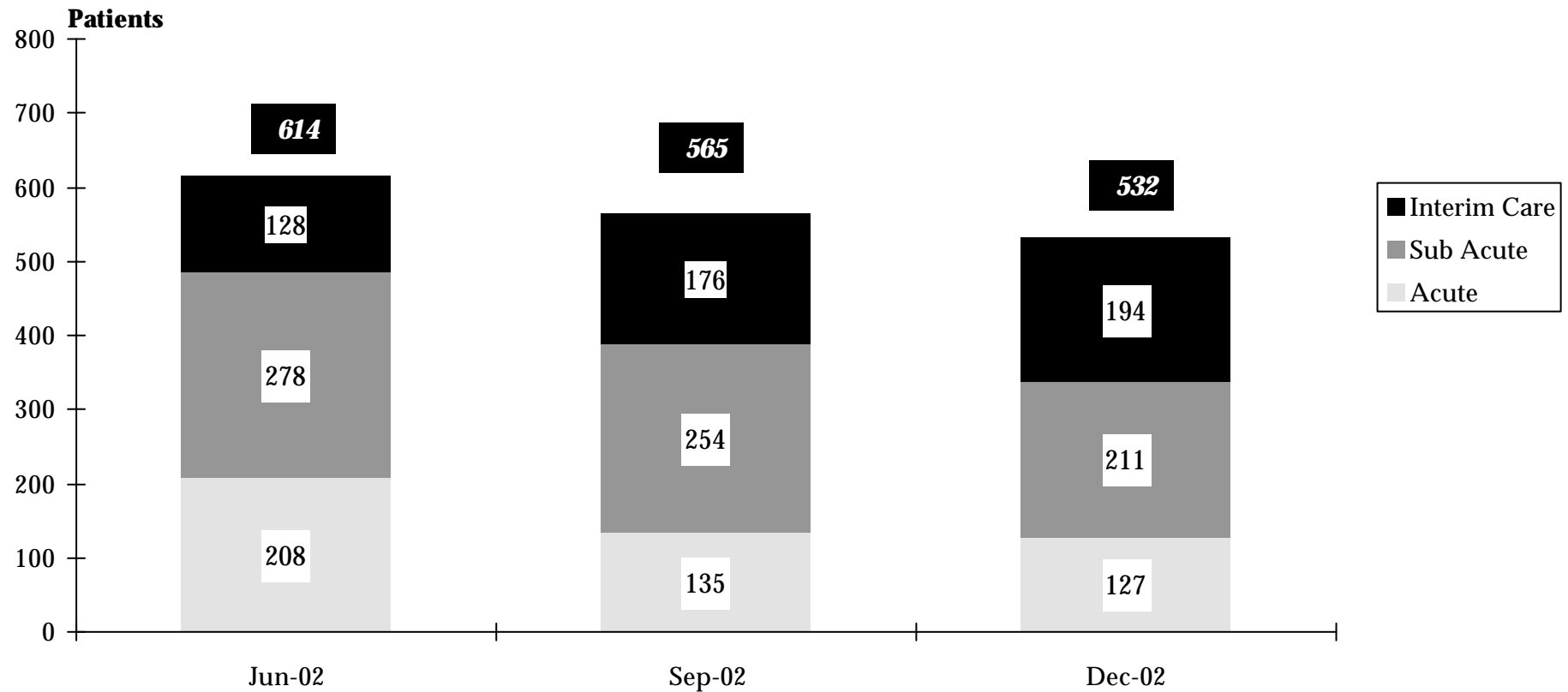
The Northern Hospital

Western Hospital

1. Patients waiting for residential aged care placement

How many patients are waiting for residential aged care placements?

Figure 1.1 Number of acute and sub acute patients waiting for residential aged care placement

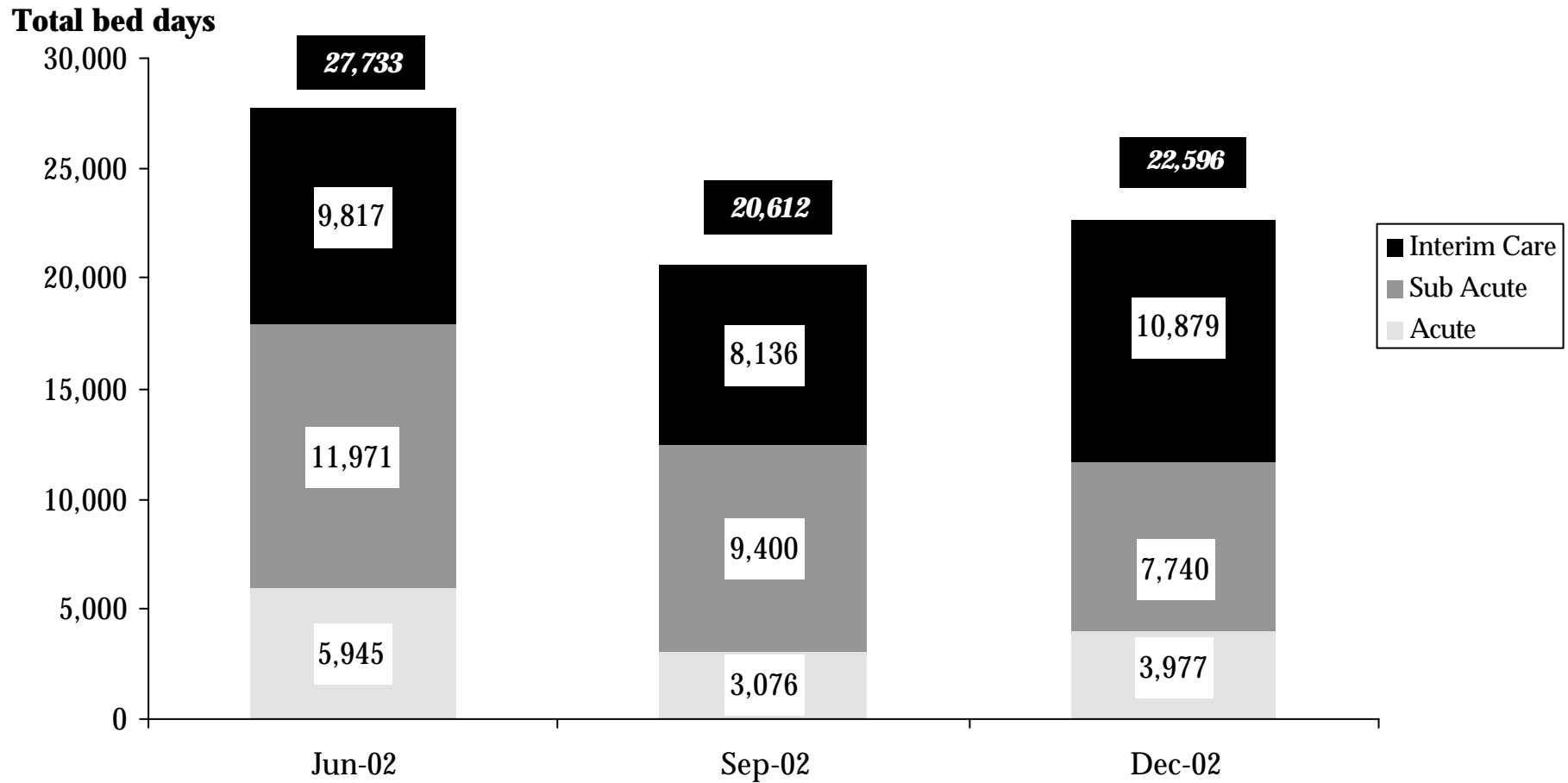


¹ Hospitals reporting sub acute are Angliss, Anne Caudle, Bundoora Extended Care, Bethlehem, Broadmeadows, Caritas Christi, Caulfield General, Dandenong, Goulburn Valley, Grace McKellar, Hampton (before closure in December 2002), Kingston, Latrobe Regional, Maroondah, Mt Eliza, Melbourne Extended Care Rehabilitation Service, Peter James, Queen Elizabeth Centre, Royal Talbot, St George's, Sunshine and Williamstown.

² Hospitals reporting acute are The Alfred, Angliss, Austin & Repatriation, Ballarat, Barwon Health, Bendigo, Box Hill, Dandenong, Frankston, Goulburn Valley, Latrobe Regional, Maroondah, Monash Medical Centre (Clayton & Moorabbin), The Northern, Rosebud, Royal Melbourne, Sandringham, St Vincent's, Sunshine, Western and Williamstown.

How many bed days are spent waiting for residential aged care placements?

Figure 1.2 Number of bed days patients wait for residential aged care placement ¹



¹ Notes for Figure 1.1 apply.

Source: Department of Human Services Bed Census.

2. Hospital Admitted Patient Activity

How many patients are admitted to hospital?

Table 2.1 Admitted patients by individual hospital^{1 2}

Hospital	December quarter 2001	September quarter 2002	December quarter 2002	% Change December 2001 to December 2002
Major metropolitan hospitals ³				
Angliss Hospital	5,672	5,964	5,690	0.3%
Austin & Repatriation Medical Centre	17,163	17,228	17,076	-0.5%
Box Hill Hospital	9,350	10,311	9,889	5.8%
Dandenong Hospital	7,089	7,738	7,639	7.8%
Frankston Hospital	10,418	11,130	10,777	3.4%
Maroondah Hospital	4,673	4,998	5,126	9.7%
Monash Medical Centre	19,679	20,441	20,266	3.0%
Royal Melbourne Hospital	19,001	20,255	20,411	7.4%
St Vincent's Hospital ⁴	11,140	11,663	11,877	6.6%
Sunshine Hospital	6,665	7,680	6,847	2.7%
The Alfred	12,719	14,049	13,939	9.6%
The Northern Hospital	6,654	7,182	7,165	7.7%
Western Hospital	7,988	9,368	9,209	15.3%
Other metropolitan hospitals				
Caulfield General Medical Centre	528	502	532	0.8%
Mercy Public Hospital, East Melbourne	4,575	4,850	4,585	0.2%
Peter MacCallum Cancer Institute	3,349	4,098	4,560	36.2%
Royal Children's Hospital	7,753	8,553	8,093	4.4%
Royal Women's Hospital	6,608	7,071	7,009	6.1%
Sandringham & District Memorial Hospital	3,774	4,180	4,040	7.0%
The Royal Victorian Eye and Ear Hospital	3,228	3,212	3,073	-4.8%
Other metropolitan hospitals	11,846	13,240	12,843	8.4%

¹ Data refer to the number of WIES-fundable separations (ie. the number of patients that have been discharged from hospital).

² 2002/2003 data are provisional.

³ Major metropolitan hospitals contain the campuses listed in the Introduction.

⁴ Data for the December 2002 quarter for St. Vincent's Hospital were incomplete. Estimates have been included for comparative purposes.

Table 2.1 Admitted patients by individual hospital (continued)

Hospital	December quarter 2001	September quarter 2002	December quarter 2002	% Change December 2001 to December 2002
Major regional hospitals				
Ballarat Health Services	6,046	6,035	6,054	0.1%
Barwon Health ⁵	12,389	13,022	13,008	5.0%
Bendigo Health Care Group	5,309	6,077	6,158	16.0%
Goulburn Valley Health	4,624	4,907	4,795	3.7%
Latrobe Regional Hospital	5,615	6,068	5,757	2.5%
Other rural hospitals				
Central Gippsland Health Service	2,627	2,590	2,576	-1.9%
South West Healthcare	3,610	3,748	3,711	2.8%
Wangaratta District Base Hospital	2,847	3,420	3,289	15.5%
Wimmera Health Care Group	2,208	2,362	2,400	8.7%
Wodonga Regional Health Service	4,206	4,319	4,355	3.5%
Other rural hospitals	35,979	38,211	37,140	3.2%
Grand total⁴⁵	265,332	284,472	279,889	5.5%

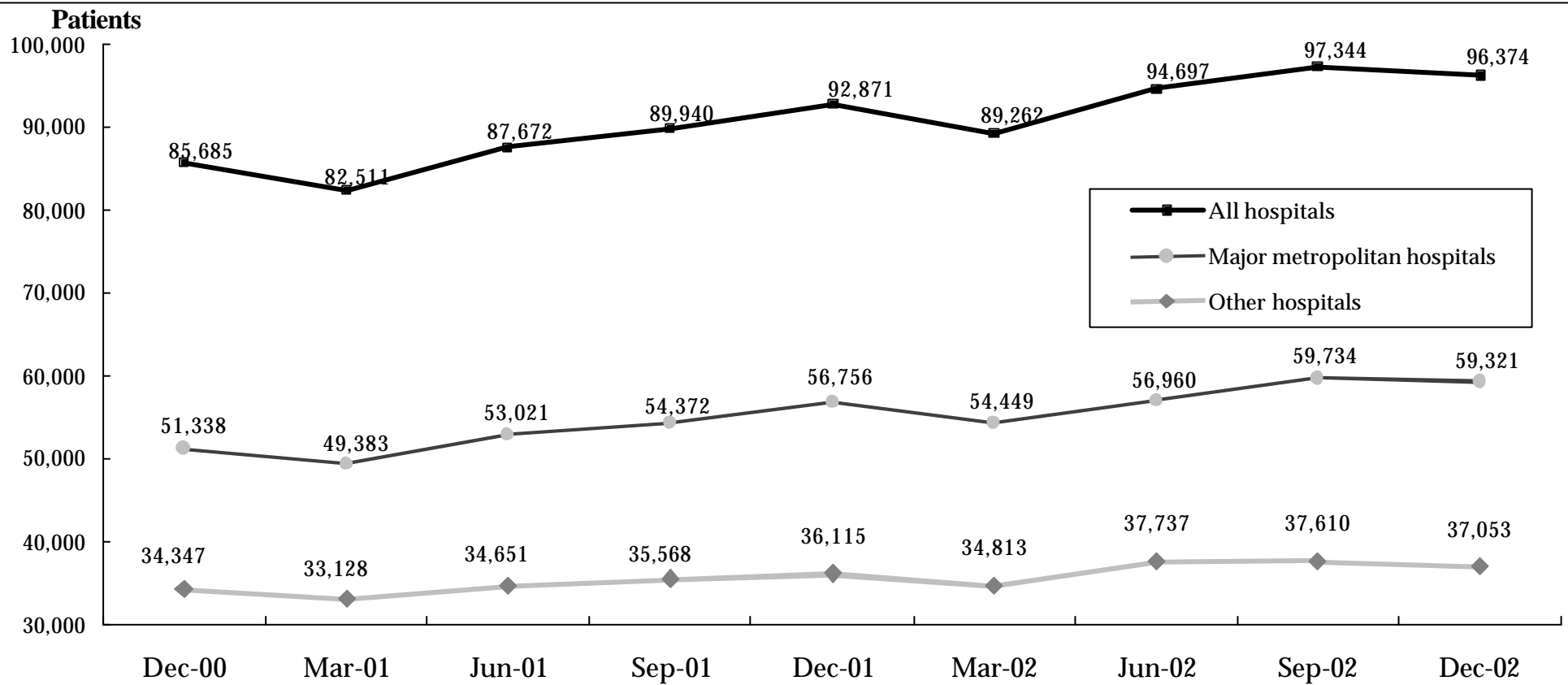
⁵ Data for the September and December 2002 quarters for Barwon Health were incomplete. Estimates have been included for comparative purposes.

Source: Victorian Admitted Episode Dataset (17 February 2003 update).

3. Access to Emergency Services

How many emergency patients are admitted to hospital?

Figure 3.1 Patients admitted to public hospitals requiring emergency care ^{1 2 3 4 5}



¹ Major metropolitan hospitals contain the campuses listed in the Introduction.

² Data refer to the number of WIES-fundable separations (ie. the number of patients that have been discharged from hospital).

³ 2002/2003 data are provisional.

⁴ Data for September and December 2002 quarters for Barwon Health were incomplete. Estimates have been included for comparative purposes.

⁵ Data for the December 2002 quarter for St Vincent's Hospital were incomplete. Estimates have been included for comparative purposes.

Source: Victorian Admitted Episode Dataset (17 February 2003 update).

How many emergency patients are admitted to hospital?

Table 3.1 Emergency admissions ^{1 2 3}

Hospital	December quarter 2001	September quarter 2002	December quarter 2002	% Change September 2002 to December 2002	% Change December 2001 to December 2002
Major metropolitan hospitals ⁴					
Angliss Hospital	2,355	2,268	2,217	-2.2%	-5.9%
Austin and Repatriation Medical Centre	4,421	5,107	5,419	6.1%	22.6%
Box Hill Hospital	4,430	4,784	4,735	-1.0%	6.9%
Dandenong Hospital	4,782	5,084	5,003	-1.6%	4.6%
Frankston Hospital	5,673	6,132	5,864	-4.4%	3.4%
Maroondah Hospital	2,907	3,049	3,161	3.7%	8.7%
Monash Medical Centre	6,749	6,386	6,141	-3.8%	-9.0%
Royal Melbourne Hospital	5,818	6,192	5,961	-3.7%	2.5%
St Vincent's Hospital	4,051	3,757	4,130	9.9%	2.0%
Sunshine Hospital	3,016	3,316	2,965	-10.6%	-1.7%
The Alfred	4,880	5,035	4,815	-4.4%	-1.3%
The Northern Hospital	3,430	3,624	3,722	2.7%	8.5%
Western Hospital	4,244	5,000	5,188	3.8%	22.2%
Other hospitals total ⁶	36,115	37,610	37,053	-1.5%	2.6%
Major hospitals total ⁵	56,756	59,734	59,321	-0.7%	4.5%
Grand total ^{5 6}	92,871	97,344	96,374	-1.0%	3.8%

¹ 2002/2003 data are provisional.

² Data exclude elective, maternity, newborn and statistical admissions.

³ Data refer to the number of WIES-fundable separations (ie. the number of patients that have been discharged from hospital).

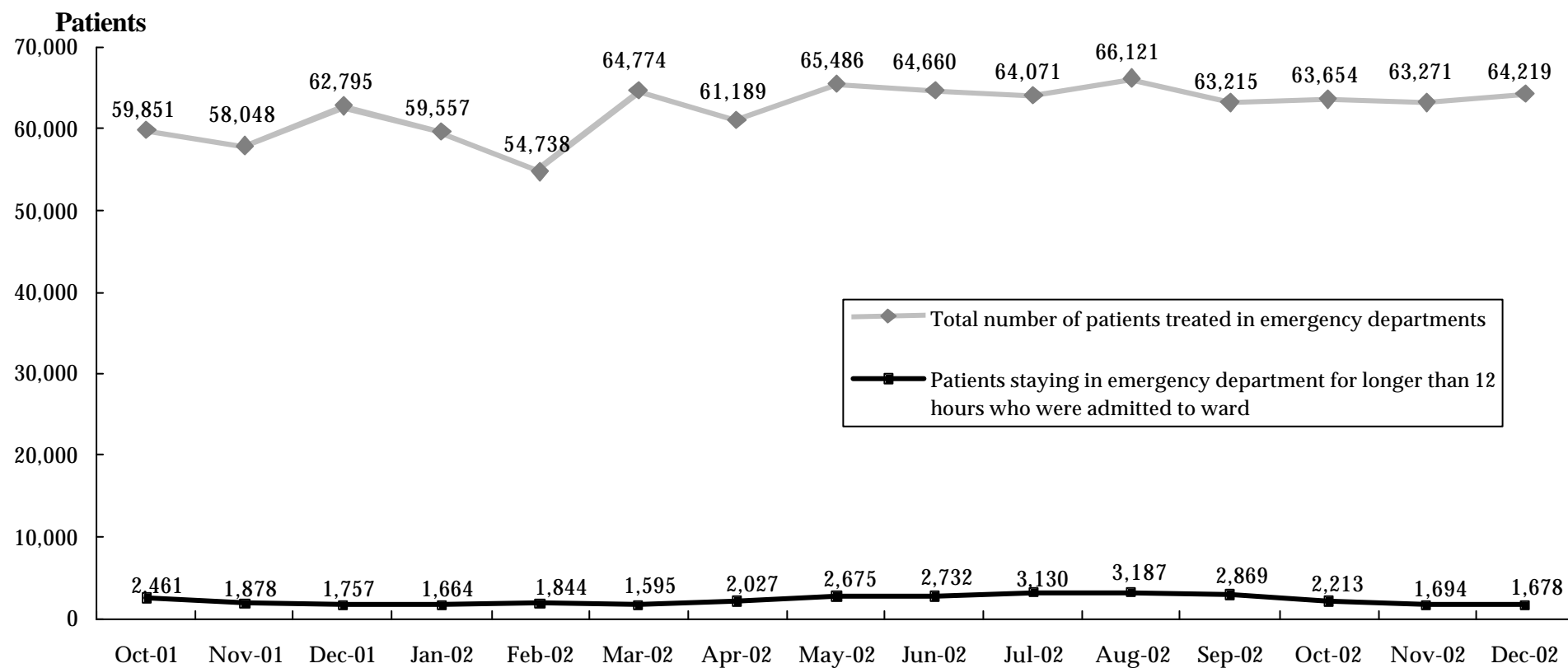
⁴ Major metropolitan hospitals include the campuses listed in the Introduction.

⁵ Data for the December 2002 quarter for St. Vincent's Hospital were incomplete. Estimates have been included for comparative purposes.

⁶ Data for the September and December 2002 quarters for Barwon Health were incomplete. Estimates have been included for comparative purposes.

How many patients stay for an extended period in the emergency department?

Figure 3.2 Patients staying in emergency departments for over 12 hours while waiting for a hospital bed^{1 2 3}



¹ The period of 'stay' is calculated from the time the patient arrives in the emergency department to the time when the patient leaves the emergency department.

² April to June 2002 12 hour admissions contains incomplete data from St. Vincent's Hospital.

³ 2002/2003 data are provisional.

Source: Pre-January 2002 - Hospital Access Program reports
Post-January 2002 - Victorian Emergency Minimum Dataset.

How many patients are treated in each hospital emergency department?

Table 3.2 Patients treated in hospital emergency departments, by Individual Hospitals ^{1 2}

Hospital	December quarter 2001	September quarter 2002	December quarter 2002	% Change December 2001 to December 2002
Major metropolitan hospitals ³				
Angliss Hospital	8,749	9,505	9,470	8.2%
Austin and Repatriation Medical Centre	9,468	10,080	9,987	5.5%
Box Hill Hospital	8,935	9,268	9,534	6.7%
Dandenong Hospital	10,379	11,456	11,327	9.1%
Frankston Hospital	9,983	11,241	11,276	13.0%
Maroondah Hospital	7,773	8,152	8,197	5.5%
Monash Medical Centre	12,733	13,652	12,963	1.8%
Royal Melbourne Hospital	12,116	11,980	11,602	-4.2%
St Vincent's Hospital	7,946	7,733	7,965	0.2%
Sunshine Hospital	11,234	13,835	13,181	17.3%
The Alfred	9,330	9,049	10,068	7.9%
The Northern Hospital	11,207	11,343	12,298	9.7%
Western Hospital	7,991	8,148	8,596	7.6%
Other metropolitan hospitals				
Royal Children's Hospital	13,062	16,615	13,497	3.3%
Major regional hospitals				
Ballarat Health Services	7,968	9,249	9,279	16.5%
Barwon Health	10,044	10,380	10,117	0.7%
Bendigo Health Care Group	8,323	7,759	8,003	-3.8%
Goulburn Valley Health	6,613	6,703	6,904	4.4%
Latrobe Regional Hospital	6,840	7,259	6,880	0.6%
Total	180,694	193,407	191,144	5.8%

¹ Data include all emergency department patients, that is, they include patients who are subsequently admitted to hospital and patients who are treated in the emergency department without being admitted to hospital.

² 2002/2003 data are provisional.

³ Major metropolitan hospitals include the campuses listed in the Introduction.

Table 3.3 Patients staying in selected public hospital emergency departments for over 12 hours while waiting for a hospital bed ^{1 2 3}

Hospital	December quarter 2001		September quarter 2002		December quarter 2002	
	Numbers	Percentage	Numbers	Percentage	Numbers	Percentage
Major metropolitan hospitals ⁴						
Angliss Hospital	134	9.3%	254	18.0%	119	8.8%
Austin and Repatriation Medical Centre	458	17.0%	597	17.2%	205	6.4%
Box Hill Hospital	366	13.4%	512	18.3%	303	10.9%
Dandenong Hospital	712	32.4%	586	23.7%	390	16.2%
Frankston Hospital	611	20.8%	475	15.6%	378	13.1%
Maroondah Hospital	369	19.6%	477	25.5%	402	21.0%
Monash Medical Centre	1,097	35.2%	1,031	32.3%	776	26.4%
Royal Melbourne Hospital	887	28.6%	1,116	33.9%	1,062	32.8%
St Vincent's Hospital	104	4.7%	1,059	52.1%	138	7.1%
Sunshine Hospital	57	3.67%	140	9.5%	31	2.5%
The Alfred	660	31.3%	906	42.7%	517	20.5%
The Northern Hospital	318	15.2%	759	38.1%	511	23.9%
Western Hospital	115	5.0%	454	18.6%	241	9.6%
Other metropolitan hospitals						
Royal Children's Hospital	16	0.7%	106	3.4%	15	0.6%
Major regional hospitals						
Ballarat Health Services	1	0.1%	76	4.8%	36	2.2%
Barwon Health	106	2.7%	407	9.9%	223	5.9%
Bendigo Health Care Group	0	0.0%	137	8.4%	112	7.1%
Goulburn Valley Health	0	0.0%	0	0.0%	0	0.0%
Latrobe Regional Hospital	85	7.8%	94	7.7%	126	10.9%
Total	6,096	14.5%	9,186	20.4%	5,585	12.9%

¹ The period of 'stay' is calculated from the time the patient arrives in the emergency department to the time when the patient leaves the emergency department.

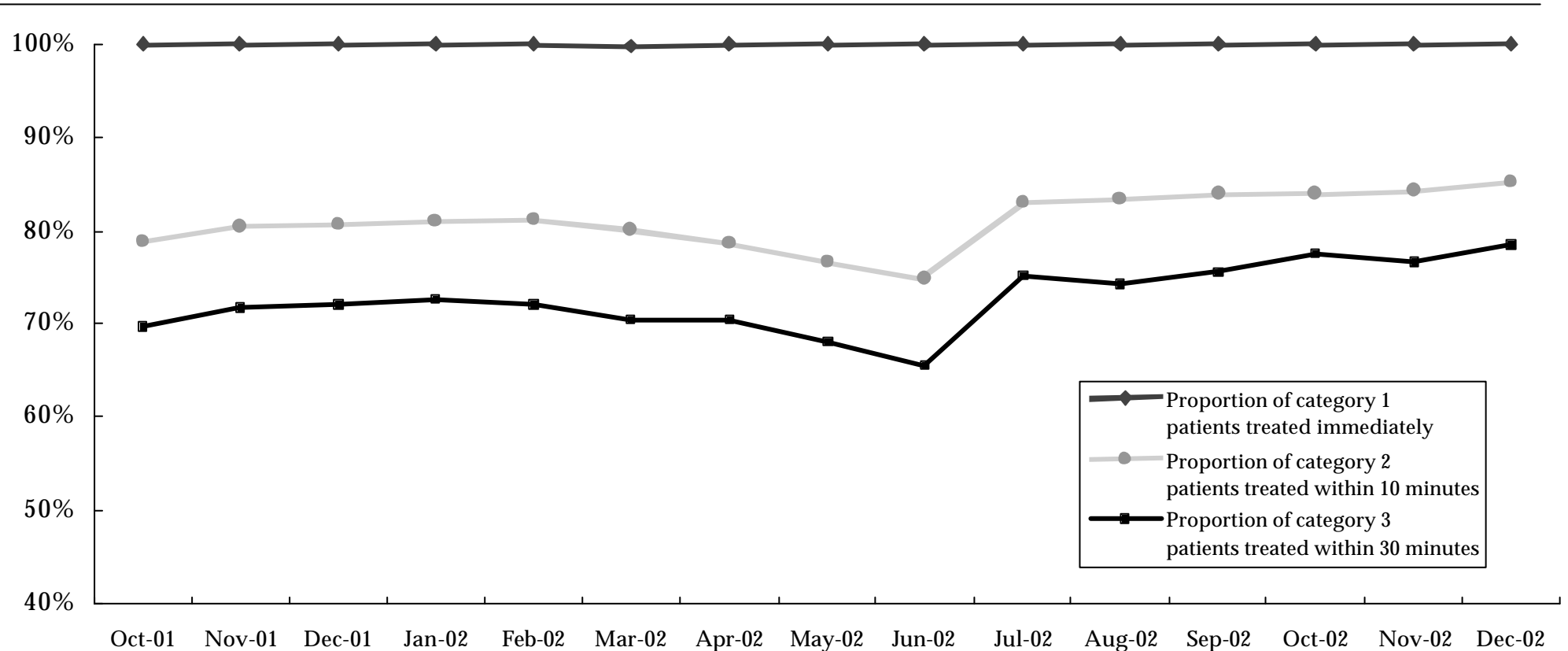
² Data represent the number of emergency department patients admitted to ward who spend more than 12 hours in the emergency department prior to being admitted as a proportion of all emergency department patients admitted to ward.

³ 2002/2003 data are provisional.

⁴ Major metropolitan hospitals include the campuses listed in the Introduction.

How many emergency department patients are treated within ideal time?

Figure 3.3 Emergency department achievement of ACEM waiting times by triage category^{1 2}



¹ Waiting times are calculated as the time between presentation at the emergency department and commencement of treatment. The following Australasian College for Emergency Medicine (ACEM) patient categories and recommended treatment times are used:

Category 1: Resuscitation case requiring immediate treatment, for example, major trauma, cardiac arrest, unconsciousness, shock.

Category 2: Emergency case requiring treatment within 10 minutes, for example, severe trauma, chest pain, severe pain, severe breathing difficulty.

Category 3: Urgent case requiring treatment within 30 minutes, for example, moderate trauma, infection, breathing difficulty.

² The business rule for 'treatment time' changed in July 2002, now taking into account treatment by nurses.

³ 2002/2003 data are provisional.

Source: Pre-January 2002 - Hospital Access Program reports

Post-January 2002 - Victorian Emergency Minimum Dataset.

How many emergency department patients are treated within ideal time?

Table 3.4 Patients treated in selected public hospital emergency departments in triage category 1, 2 or 3 within ACEM recommended waiting times: December quarter 2002^{1 2}

Hospital	Triage Category 1		Triage Category 2		Triage Category 3	
	Total patients	Treated immediately	Total patients	Treated in 10 minutes	Total patients	Treated in 30 minutes
Major metropolitan hospitals³						
Angliss Hospital	33	100%	518	84%	2,105	80%
Austin and Repatriation Medical Centre	109	100%	755	81%	3,318	73%
Box Hill Hospital	101	100%	740	79%	3,532	58%
Dandenong Hospital	84	100%	939	84%	3,107	63%
Frankston Hospital	98	100%	2,307	94%	4,790	88%
Maroondah Hospital	63	100%	684	83%	2,366	74%
Monash Medical Centre	172	100%	1,528	84%	4,041	76%
Royal Melbourne Hospital	175	100%	1,208	81%	3,546	75%
St Vincent's Hospital	103	100%	734	63%	3,291	59%
Sunshine Hospital	33	100%	652	85%	4,122	81%
The Alfred	272	100%	1,219	75%	3,576	81%
The Northern Hospital	90	100%	810	98%	3,428	93%
Western Hospital	106	100%	837	93%	2,866	89%
Other metropolitan hospitals						
Royal Children's Hospital	16	100%	307	87%	3,171	75%
Major regional hospitals						
Ballarat Health Services	58	100%	315	85%	1,824	88%
Barwon Health	66	100%	835	71%	2,697	56%
Bendigo Health Care Group	34	100%	565	100%	2,433	100%
Goulburn Valley Health	27	100%	298	87%	1,702	89%
Latrobe Regional Hospital	64	100%	397	88%	1,774	88%
Total	1,704	100%	15,648	84%	57,689	78%

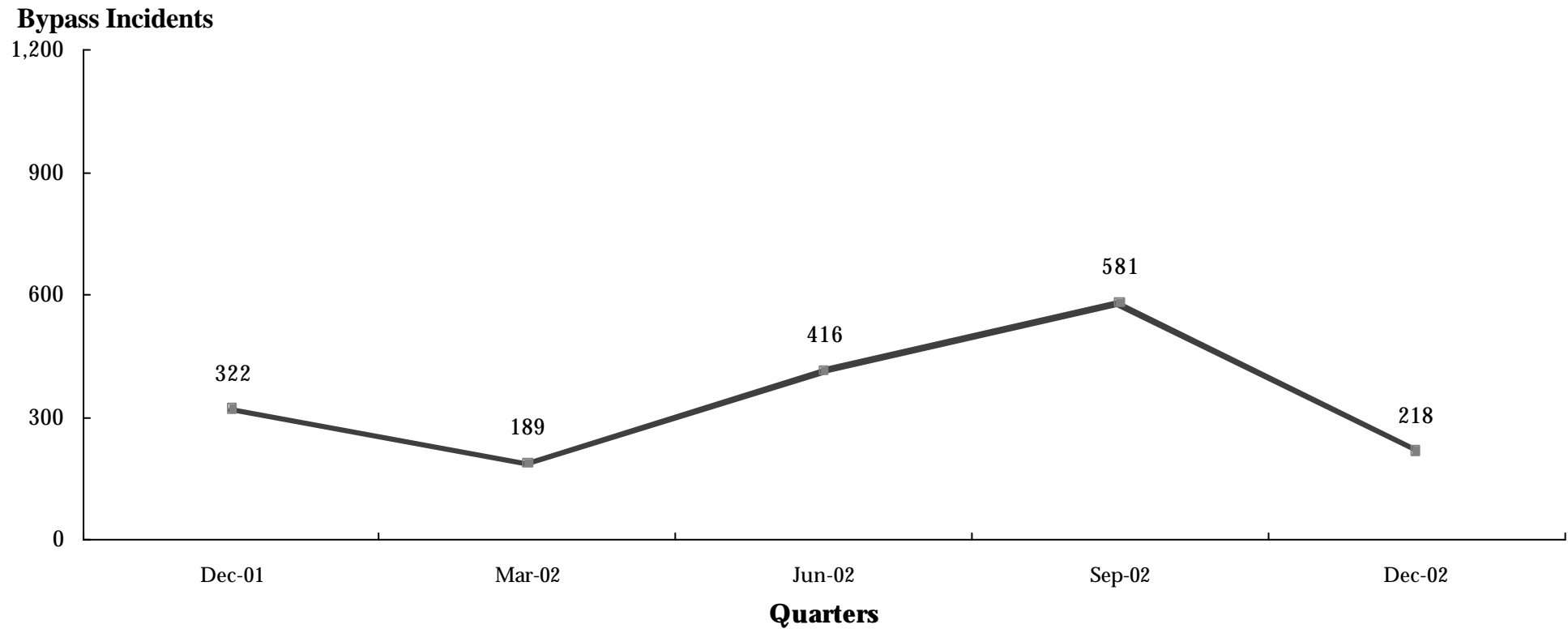
¹ Australasian College for Emergency Medicine (ACEM). The business rule for 'treatment time' changed in July 2002/03, now taking into account treatment from nurses.

² 2002/2003 data are provisional.

³ Major metropolitan hospitals include the campuses listed in the Introduction.

How often do hospital emergency departments go on 'bypass'?

Figure 3.4 Periods of ambulance bypass of public hospitals^{1 2}



¹ Hospital emergency departments can request to go on ambulance bypass when the emergency department has reached maximum capacity and the treatment of patients already in the emergency department could be significantly compromised with the arrival, by ambulance, of further patients. Each individual period of ambulance bypass is for two hours or less.

² Bypass policy allows for critically ill or injured patients to be taken to the nearest hospital emergency department regardless of bypass status.

Source: Metropolitan Ambulance Service.

How often do hospital emergency departments go on 'bypass'?

Table 3.5 Periods of ambulance bypass, by Individual Hospital ^{1 2}

Hospital	Dec-01 Qtr	Mar-02 Qtr	Jun-02 Qtr	Sep-02 Qtr	Dec-02 Qtr
Major metropolitan hospitals ³					
Angliss Hospital	6	5	3	7	2
Austin & Repatriation Medical Centre	18	1	23	33	9
Box Hill Hospital	18	9	17	17	6
Dandenong Hospital	41	11	27	41	12
Frankston Hospital	37	40	42	39	13
Maroondah Hospital	32	15	11	26	11
Monash Medical Centre	49	43	106	104	39
Royal Melbourne Hospital	26	5	60	117	74
St Vincent's Hospital	23	3	17	27	1
Sunshine Hospital	6	4	28	21	7
The Alfred	50	24	15	31	2
The Northern Hospital	14	5	21	38	11
Western Hospital	2	24	46	80	31
Total	322	189	416	581	218

¹ Hospital emergency departments can request to go on ambulance bypass when the emergency department has reached maximum capacity and the treatment of patients already in the emergency department could be significantly compromised with the arrival, by ambulance, of further patients.

² Metropolitan Ambulance Service (MAS) response times are now being reported in MAS Response Report: A Quarterly Statistical Review of MAS, Melbourne. Copies of the Response Report can be obtained from MAS, Corporate Planning and Corporate Communications Unit, phone (03) 9840 3648.

³ Major metropolitan hospitals include the campuses listed in the Introduction.

Source: Metropolitan Ambulance Service.

4. Access to Critical Care Services

How many hospital beds are available for patients who need intensive care?

Table 4.1 Average number of public hospital intensive care beds available and open at 9.00a.m., by Month ^{1 2 3}

	Oct-01	Nov-01	Dec-01	Jan-02	Feb-02	Mar-02	Apr-02	May-02	Jun-02	Jul-02	Aug-02	Sep-02	Oct-02	Nov-02	Dec-02
Available ⁴	4.6	4.4	5.8	4.4	5.9	6.3	5.1	4.0	3.1	1.9	2.0	1.5	3.1	3.8	3.7
Total Open ⁵	98.6	99.5	97.2	96.7	95.0	96.3	95.0	97.9	97.9	99.7	93.8	100.1	98.6	98.8	96.7
Available (incl Barwon) ⁶	n.a.	n.a.	n.a.	n.a.	n.a.	n.a.	n.a.	n.a.	n.a.	2.0	2.0	1.6	3.7	4.5	4.2
Total Open ICU (incl Barwon) ⁶	n.a.	n.a.	n.a.	n.a.	n.a.	n.a.	n.a.	n.a.	n.a.	106.7	101.0	106.8	105.9	105.3	103.3
Total Open ICU & HDU (incl Barwon) ⁷	n.a.	n.a.	n.a.	n.a.	n.a.	n.a.	n.a.	n.a.	n.a.	131.6	126.5	132.4	129.4	134.4	130.5

¹ Based upon hospital census taken at 9.00a.m. daily.

² The data in this table represents an average for each month and varies from Table 4.3 which gives averages for the quarter.

³ Changes to reporting in the December quarter 2001 account for the lower number of beds open. Previously, Northern, Maroondah and Western included some high dependency beds.

⁴ Available beds are unoccupied beds which are staffed, functional and available to receive new patients.

⁵ Total open beds are all functioning and staffed beds, regardless of whether they are occupied.

⁶ Change in counting from July 2002 to include Barwon Health intensive care.

⁷ Change in counting from July 2002 to include all unit beds ie. Intensive Care and Stepdown Beds and Barwon Health.

Source: Office of the Coordinator of Emergency and Critical Care Services.

How many hospital beds are available for patients who need coronary care?

Table 4.2 Average number of public hospital coronary care beds available and open at 9.00a.m., by Month ¹

	Oct-01	Nov-01	Dec-01	Jan-02	Feb-02	Mar-02	Apr-02	May-02	Jun-02	Jul-02	Aug-02	Sep-02	Oct-02	Nov-02	Dec-02
Available	6.1	6.4	7.6	7.7	8.1	10.2	7.8	5.1	5.2	4.5	3.4	3.6	4.9	7.3	4.7
Total Open	73.8	74.0	73.6	71.7	73.0	74.6	72.9	74.4	72.5	66.4	68.0	67.7	66.1	68.2	69.0
Available (incl Geelong)	n.a.	n.a.	n.a.	n.a.	n.a.	n.a.	n.a.	n.a.	n.a.	5.3	3.9	3.9	5.6	7.9	5.2
Total Open (incl Geelong)	n.a.	n.a.	n.a.	n.a.	n.a.	n.a.	n.a.	n.a.	n.a.	72.4	74.0	73.7	72.1	74.2	75.0

¹ Notes under Table 4.1 apply.

Source: Office of the Coordinator of Emergency and Critical Care Services.

How many hospital beds are available for patients who need intensive care?

Table 4.3 Average number of public hospital intensive care beds available and open at 9.00a.m., by Hospital: December quarter 2002^{1 2}

Hospital	Available ³	Total Open ICU ⁴	Total Open ICU & HDU ⁴
Major metropolitan hospitals⁵			
Angliss Hospital	n.a.	n.a.	n.a.
Austin and Repatriation Medical Centre	0.0	10.2	11.6
Box Hill Hospital	0.2	4.9	6.5
Dandenong Hospital	0.2	6.9	6.9
Frankston Hospital	0.3	6.2	7.8
Maroondah Hospital	0.4	3.3	6.4
Monash Medical Centre	0.6	11.7	11.7
Royal Melbourne Hospital	0.1	15.1	18.8
St Vincent's Hospital	0.6	8.5	8.7
Sunshine Hospital	-	-	-
The Alfred	0.4	20.1	25.6
The Northern Hospital	0.1	5.1	7.0
Western Hospital	0.7	6.1	9.0
Other hospitals			
Barwon Health	0.6	6.8	10.8
Total⁶	4.1	104.8	130.8

¹ Based upon hospital census taken at 9.00a.m. daily.

² Changes to reporting in the December quarter 2001 account for the lower number of beds open. Previously, Northern, Maroondah and Western included some high dependency beds.

³ Available beds are unoccupied beds which are staffed, functional and available to receive new patients.

⁴ Total open beds are all functioning and staffed beds, regardless of whether they are occupied.

⁵ Major metropolitan hospitals include the campuses listed in the Introduction.

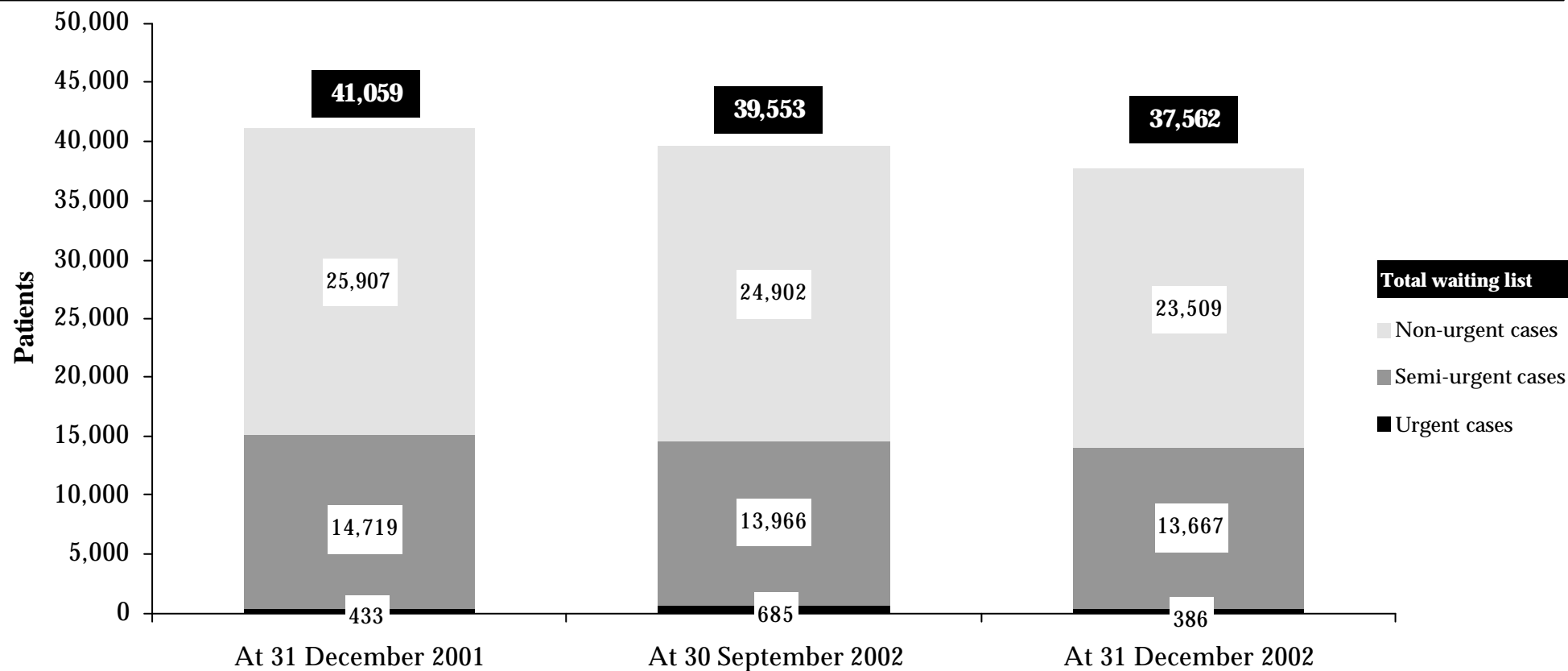
⁶ The data in this table represents an average for the quarter and varies from tables 4.1 and 4.2 which are averages for each month.

Source: Office of the Coordinator of Emergency and Critical Care Services.

5. Access To Elective Surgery

How many people are on hospital waiting lists for elective surgery?

Waiting list by urgency



¹ Waiting list numbers include all patients booked and waiting for elective surgery, in line with national definitions.

² The waiting list patient categories are:

- Urgent cases (waiting list category 1): Admission within 30 days desirable for a condition that has the potential to deteriorate quickly to the point that it may become an emergency.
- Semi-urgent cases (waiting list category 2): Admission within 90 days desirable for a condition causing some pain, dysfunction or disability but which is not likely to deteriorate quickly or become an emergency.
- Non-urgent cases (waiting list category 3): Admission at some time in the future acceptable for a condition causing minimal or no pain, dysfunction or disability which is very unlikely to deteriorate quickly and which does not have the potential to become an emergency.

³ December quarter 2001 data has been amended from the previous reports.

⁴ 2002/2003 data are provisional.

Source: Elective Surgery Information System.

How many people are on hospital waiting lists for elective surgery?

Table 5.1 Waiting lists by Urgency, by Individual Hospital^{1 2 3}

Hospital	Urgent cases			Semi-urgent cases			Non-urgent cases		
	31 Dec 2001	30 Sep 2002	31 Dec 2002	31 Dec 2001	30 Sep 2002	31 Dec 2002	31 Dec 2001	30 Sep 2002	31 Dec 2002
Major metropolitan hospitals ⁴									
Angliss Hospital	4	24	6	183	238	154	240	255	165
Austin and Repatriation Medical Centre	15	41	26	1,416	1,091	1,072	1,203	1,185	1,190
Box Hill Hospital	10	36	11	428	535	567	617	784	766
Dandenong Hospital	26	34	20	865	1,085	1,096	2,056	2,486	2,046
Frankston Hospital	58	65	54	2,145	2,219	2,122	1,315	1,064	949
Maroondah Hospital	13	7	3	258	174	128	614	963	1,064
Monash Medical Centre	69	105	45	1,051	1,322	1,377	2,937	2,987	2,528
Royal Melbourne Hospital	29	43	31	1,058	825	839	1,765	1,521	1,541
St Vincent's Hospital	31	35	21	1,090	644	752	601	864	860
Sunshine Hospital	9	8	4	184	157	165	411	491	567
The Alfred	68	79	48	1,539	1,219	1,063	1,412	1,088	1,018
The Northern Hospital	19	48	23	802	984	971	2,151	1,872	1,692
Western Hospital	5	22	6	689	605	693	856	854	781
Other metropolitan hospitals									
Royal Children's Hospital	10	23	13	156	208	139	1,083	1,406	1,419
Royal Women's Hospital	10	20	2	275	159	178	318	201	160
Sandringham & District Memorial Hospital	3	10	6	138	120	128	350	323	370
The Royal Victorian Eye and Ear Hospital	5	13	8	567	470	223	2,491	1,980	1,666

¹ Waiting list numbers include all patients booked and waiting for elective surgery, in line with national definitions.

² December quarter 2001 data has been amended from the previous reports.

³ 2002/2003 data are provisional.

⁴ Major metropolitan hospitals include the campuses listed in the Introduction.

Table 5.1 Waiting lists by Urgency, by Individual Hospital (continued)

Hospital	Urgent cases			Semi-urgent cases			Non-urgent cases		
	31 Dec 2001	30 Sep 2002	31 Dec 2002	31 Dec 2001	30 Sep 2002	31 Dec 2002	31 Dec 2001	30 Sep 2002	31 Dec 2002
Major regional hospitals									
Ballarat Health Services		4	2	262	276	255	1,152	1,049	993
Barwon Health	5	16	6	680	619	658	2,103	1,551	1,605
Bendigo Health Care Group	16	21	20	363	379	396	807	651	685
Goulburn Valley Health	9	19	17	159	243	307	136	206	207
Latrobe Regional Hospital	8	8	3	119	150	130	585	441	479
Other rural hospitals									
Wangaratta District Base Hospital	8	1	1	103	75	87	280	301	371
West Gippsland Hospital	3	3	10	189	169	167	424	379	387
Total	433	685	386	14,719	13,966	13,667	25,907	24,902	23,509

Source: Elective Surgery Information System.

What is the throughput of people waiting for elective surgery?

Table 5.2 Admissions and cancellations, by Individual Hospital ^{1 2 3}

Hospital	Patients on Waiting Lists			Admissions from Waiting Lists			Patients Cancelled from Waiting Lists		
	at 31 Dec 2001	at 30 Sep 2002	at 31 Dec 2002	During the Quarter			During the Quarter		
				Dec-01	Sep-02	Dec-02	Dec-01	Sep-02	Dec-02
Major metropolitan hospitals ⁴									
Angliss Hospital	427	517	325	507	784	757	78	158	157
Austin and Repatriation Medical Centre	2,634	2,317	2,288	1,821	1,896	1,906	315	392	379
Box Hill Hospital	1,055	1,355	1,344	1,330	1,415	1,192	193	165	183
Dandenong Hospital	2,947	3,605	3,162	866	1,319	1,238	166	532	933
Frankston Hospital	3,518	3,348	3,125	1,244	1,606	1,487	203	389	429
Maroondah Hospital	885	1,144	1,195	770	708	720	172	146	141
Monash Medical Centre	4,057	4,414	3,950	2,185	1,963	1,948	446	490	847
Royal Melbourne Hospital	2,852	2,389	2,411	1,818	1,684	1,603	328	404	386
St Vincent's Hospital	1,722	1,543	1,633	1,297	1,283	1,153	263	238	152
Sunshine Hospital	604	656	736	978	1,295	1,045	146	218	186
The Alfred	3,019	2,386	2,129	1,379	1,446	1,347	355	405	284
The Northern Hospital	2,972	2,904	2,686	1,127	1,151	1,285	302	231	433
Western Hospital	1,550	1,481	1,480	1,187	1,110	941	445	358	199
Other metropolitan hospitals									
Royal Children's Hospital	1,249	1,637	1,571	2,519	2,721	2,597	231	228	149
Royal Women's Hospital	603	380	340	780	761	705	235	148	204
Sandringham & District Memorial Hospital	491	453	504	605	566	508	156	106	59
The Royal Victorian Eye and Ear Hospital	3,063	2,463	1,897	2,785	2,843	2,594	355	518	312

¹ Waiting list numbers include all patients booked and waiting for elective surgery, in line with national definitions.

² December quarter 2001 data has been amended from the previous reports.

³ 2002/2003 data are provisional.

⁴ Major metropolitan hospitals include the campuses listed in the Introduction.

Table 5.2 Admissions and cancellations, by Individual Hospital (continued)

Hospital	Patients on Waiting Lists			Admissions from Waiting Lists			Patients Cancelled from Waiting Lists		
	at 31 Dec 2001	at 30 Sep 2002	at 31 Dec 2002	During the Quarter			During the Quarter		
				Dec-01	Sep-02	Dec-02	Dec-01	Sep-02	Dec-02
Major regional hospitals									
Ballarat Health Services	1,414	1,329	1,250	650	676	664	223	98	198
Barwon Health	2,788	2,186	2,269	839	1,052	1,290	210	213	204
Bendigo Health Care Group	1,186	1,051	1,101	884	1,138	1,118	127	99	94
Goulburn Valley Health	304	468	531	519	700	634	70	112	133
Latrobe Regional Hospital	712	599	612	1,023	1,040	1,001	94	71	51
Other rural hospitals									
Wangaratta District Base Hospital	391	377	459	507	605	490	78	88	54
West Gippsland Hospital	616	551	564	513	538	521	96	61	48
Total	41,059	39,553	37,562	28,133	30,300	28,744	5,287	5,868	6,215

Source: Elective Surgery Information System.

How many people are on hospital waiting lists for longer than the ideal time?

Table 5.3 People on elective surgery waiting lists for longer than ideal time, by Individual Hospital ^{1 2 3}

Hospital	Urgent cases waiting over 30 days			Semi-urgent cases waiting over 90 days		
	31 Dec 2001	30 Sep 2002	31 Dec 2002	31 Dec 2001	30 Sep 2002	31 Dec 2002
Major metropolitan hospitals ⁴						
Angliss Hospital	0	0	0	0	0	0
Austin & Repatriation Medical Centre	0	0	0	684	460	430
Box Hill Hospital	0	0	0	69	94	125
Dandenong Hospital	0	0	0	551	667	694
Frankston Hospital	0	0	0	1,356	1,450	1,398
Maroondah Hospital	0	0	0	64	44	26
Monash Medical Centre	0	0	0	428	665	681
Royal Melbourne Hospital	0	0	0	515	318	367
St Vincent's Hospital	0	0	0	550	227	280
Sunshine Hospital	0	0	0	28	12	20
The Alfred	0	0	0	1,074	705	584
The Northern Hospital	0	0	0	376	390	414
Western Hospital	0	0	0	315	227	289
Other metropolitan hospitals						
Royal Children's Hospital	0	0	0	0	0	0
Royal Women's Hospital	0	0	0	0	0	1
Sandringham & District Memorial Hospital	0	0	0	42	20	13
The Royal Victorian Eye and Ear Hospital	0	0	0	189	69	46

¹ Waiting list numbers include all patients booked and waiting for elective surgery, in line with national definitions.

² December quarter 2001 data has been amended from the previous reports.

³ 2002/2003 data are provisional.

⁴ Major metropolitan hospitals include the campuses listed in the Introduction.

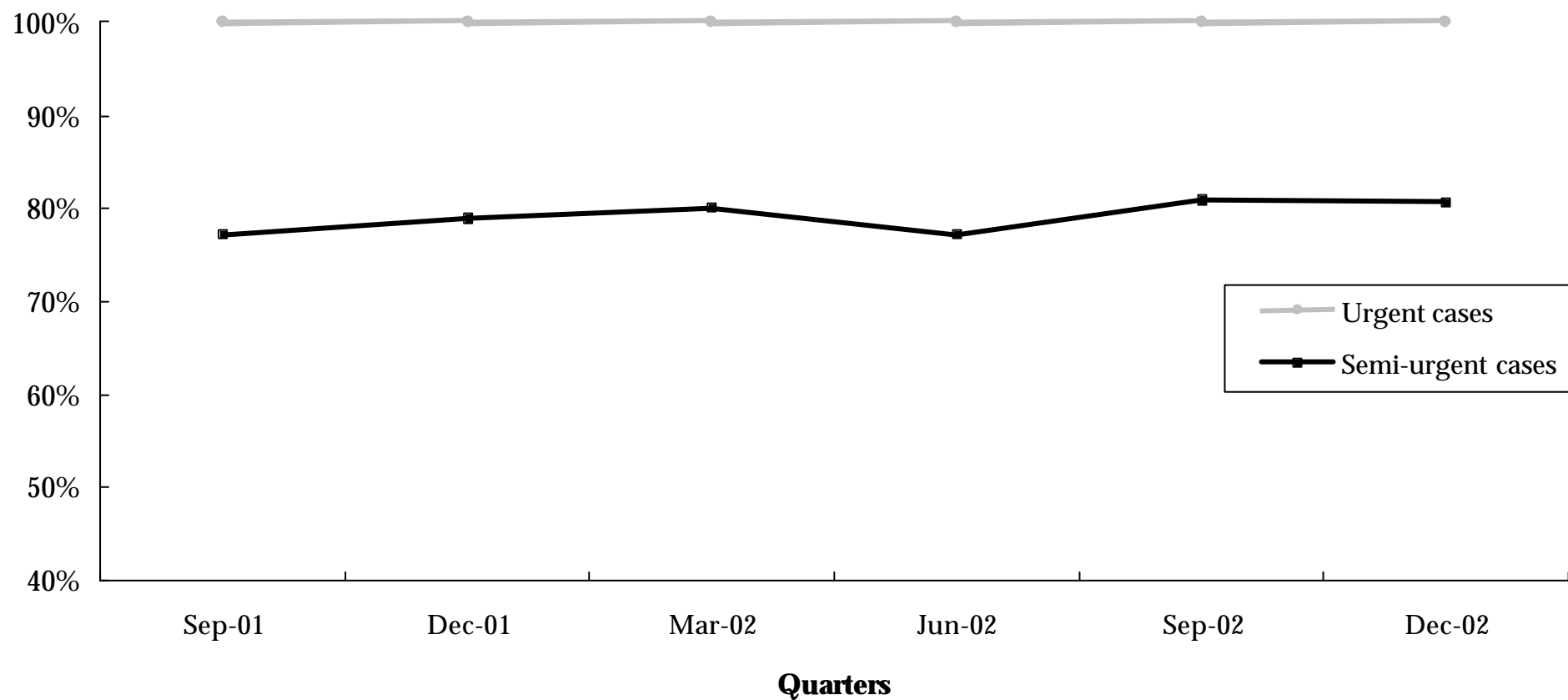
Table 5.3 People on elective surgery waiting lists for longer than ideal time, by Individual Hospital (continued)

Hospital	Urgent cases waiting over 30 days			Semi-urgent cases waiting over 90 days		
	31 Dec 2001	30 Sep 2002	31 Dec 2002	31 Dec 2001	30 Sep 2002	31 Dec 2002
Major regional hospitals						
Ballarat Health Services	0	0	0	115	73	90
Barwon Health	0	0	0	329	267	323
Bendigo Health Care Group	0	0	0	200	203	195
Goulburn Valley Health	0	0	0	3	44	83
Latrobe Regional Hospital	0	0	0	0	1	2
Other rural hospitals						
Wangaratta District Base Hospital	0	0	0	14	5	6
West Gippsland Hospital	0	0	0	38	49	36
Total	0	0	0	6,940	5,990	6,103

Source: Elective Surgery Information System.

What percentage of patients are admitted within clinically ideal times?

Figure 5.2 Percentage of patients from elective surgery waiting lists who were admitted within the ideal time, by Urgency^{1 2}



¹ December quarter 2001 data has been amended from the previous reports.

² 2002/2003 data are provisional.

Source: Elective Surgery Information System.

What percentage of patients are admitted within clinically ideal times?

Table 5.4 Percentage of people from elective surgery waiting lists who were admitted within the ideal time, by Urgency, by Individual Hospital ¹

Hospital	Urgent cases admitted within 30 days during the quarter				Semi-urgent cases admitted within 90 days during the quarter			
	September 2002		December 2002		September 2002		December 2002	
	Number	Percentage	Number	Percentage	Number	Percentage	Number	Percentage
Major metropolitan hospitals ²								
Angliss Hospital	112	100.00%	93	100.00%	442	99.10%	431	99.77%
Austin & Repatriation Medical Centre	570	100.00%	599	100.00%	594	65.13%	642	70.24%
Box Hill Hospital	371	100.00%	308	100.00%	700	85.16%	557	82.89%
Dandenong Hospital	378	100.00%	295	100.00%	252	65.63%	249	71.55%
Frankston Hospital	364	100.00%	327	100.00%	512	56.83%	479	57.09%
Maroondah Hospital	211	100.00%	169	100.00%	260	94.55%	249	87.68%
Monash Medical Centre	659	100.00%	657	100.00%	575	69.53%	546	69.03%
Royal Melbourne Hospital	626	100.00%	704	100.00%	507	75.33%	440	74.83%
St Vincent's Hospital	273	100.00%	269	100.00%	666	76.46%	634	83.86%
Sunshine Hospital	54	100.00%	61	100.00%	424	94.64%	312	92.31%
The Alfred	645	99.85%	552	100.00%	405	64.08%	386	60.69%
The Northern Hospital	278	100.00%	306	100.00%	495	76.39%	500	68.87%
Western Hospital	202	100.00%	163	100.00%	506	81.88%	465	80.87%
Other metropolitan hospitals								
Royal Children's Hospital	480	100.00%	387	100.00%	598	100.00%	530	100.00%
Royal Women's Hospital	166	100.00%	188	100.00%	465	100.00%	370	99.73%
Sandringham & District Memorial Hospital	88	100.00%	106	100.00%	252	87.80%	220	89.80%
The Royal Victorian Eye and Ear Hospital	121	100.00%	135	100.00%	1,491	93.77%	1,252	94.78%

¹ 2002/2003 data are provisional.

² Major metropolitan hospitals include the campuses listed in the Introduction.

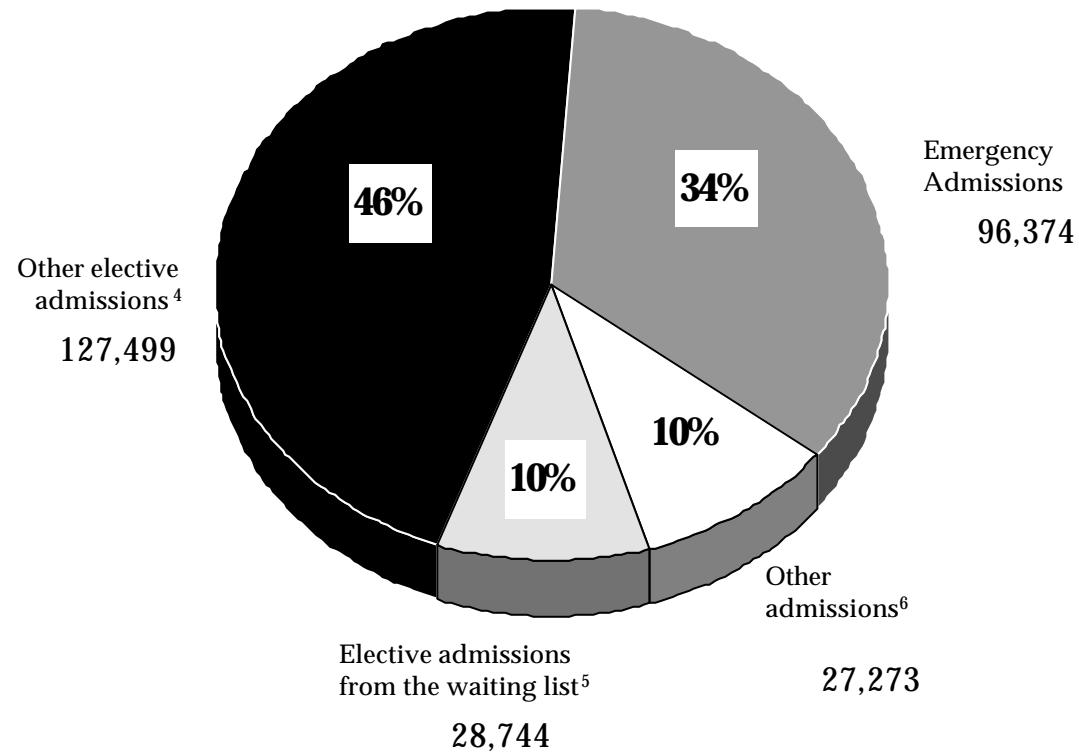
Table 5.4 Percentage of people from elective surgery waiting lists who were admitted within the ideal time, by Urgency, by Individual Hospital (continued)

Hospital	Urgent cases admitted within 30 days during the quarter				Semi-urgent cases admitted within 90 days during the quarter			
	September 2002		December 2002		September 2002		December 2002	
	Number	Percentage	Number	Percentage	Number	Percentage	Number	Percentage
Major regional hospitals								
Ballarat Health Services	36	100.00%	37	100.00%	290	83.82%	330	88.71%
Barwon Health	65	100.00%	83	100.00%	500	78.13%	488	80.00%
Bendigo Health Care Group	153	100.00%	164	100.00%	200	61.92%	210	68.63%
Goulburn Valley Health	166	100.00%	201	100.00%	375	88.03%	265	83.07%
Latrobe Regional Hospital	89	100.00%	89	100.00%	382	99.22%	388	98.23%
Other rural hospitals								
Wangaratta District Base Hospital	48	100.00%	31	100.00%	247	95.74%	194	96.04%
West Gippsland Hospital	77	100.00%	61	100.00%	208	81.89%	219	81.11%
Total	6,232	99.98%	5,985	100.00%	11,346	80.88%	10,356	80.65%

Source: Elective Surgery Information System.

What is the admission source of total hospital activity?

Figure 5.3 Separations by admission type: December quarter 2002 ^{1 2 3 7 8}



¹ Percentages may not add to 100% due to rounding.

² 2002/2003 data are provisional.

³ Data refer to the number of WIES-fundable separations (ie. the number of patients that have been discharged from hospital).

⁴ Excludes patients admitted from the elective surgery waiting list.

⁵ Patients admitted from the elective surgery waiting list during the quarter (ESIS).

⁶ Includes maternity, newborn and statistical (change in patient care type) admissions.

⁷ Data for December 2002 quarter for Barwon Health are not currently available. Estimates have been included for comparative purposes.

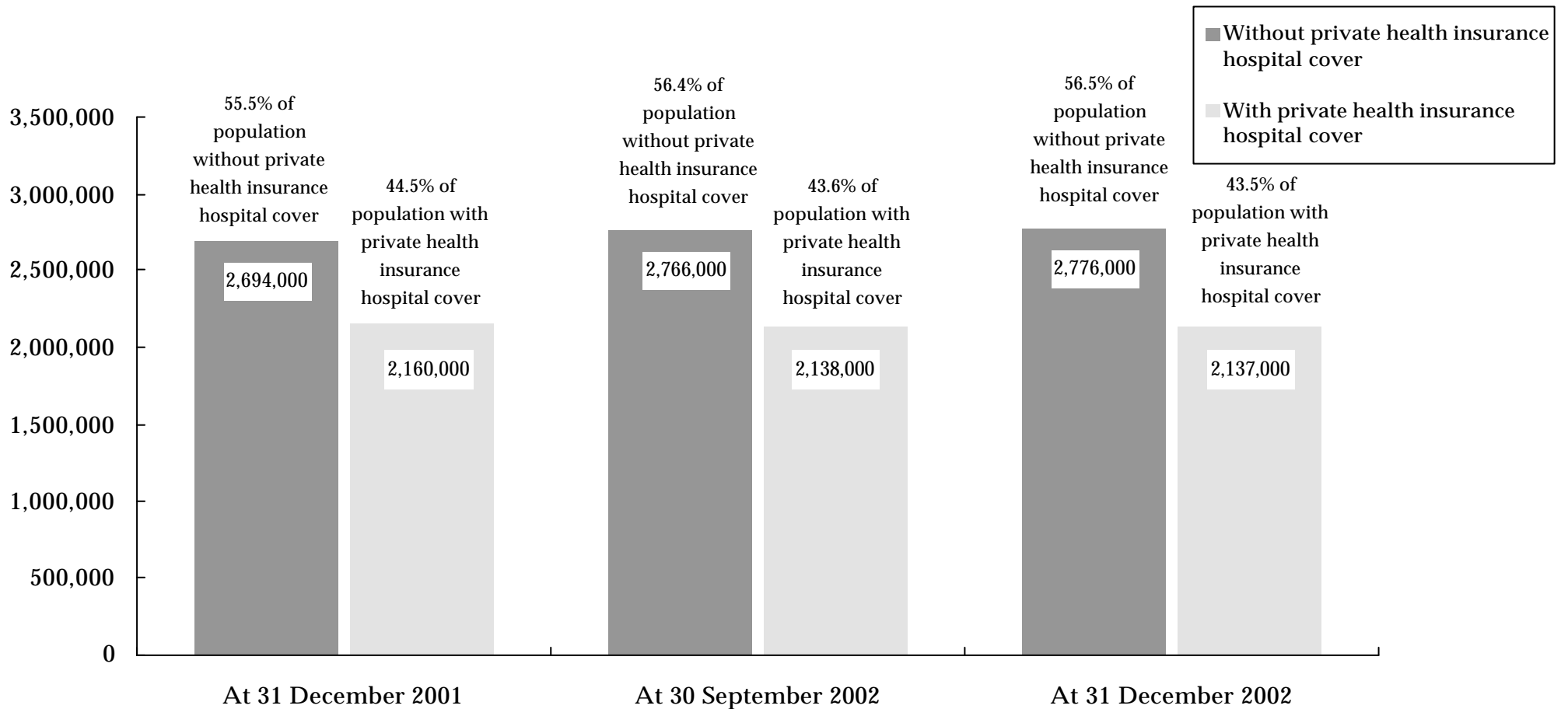
⁸ Data for the December 2002 quarter for St. Vincent's Hospital were incomplete. Estimates have been included for comparative purposes.

Source: Victorian Admitted Episode Dataset (17 February 2003 update).
Elective Surgery Information System.

6. Private Health Insurance

How many Victorians have private health insurance hospital cover?

Figure 6.1 Health insurance status of Victorians^{1 2 3}



¹ Data are for all people covered by insurance, that is, contributors, partners and dependants.

² Data for current and previous quarters are provisional.

³ Statistics reflect total persons covered by any level of hospital private health insurance.

Source: Private Health Insurance Administration Council (17 February 2003).

7. Glossary

What do the terms used in this report mean?

Admitted Patient

Someone who is an inpatient in a hospital. Sameday patients who are admitted for less than 24 hours are also counted as inpatients but people who attend hospital for outpatient clinics are not.

Cancellation

The request for elective surgery has been withdrawn and the patient is removed from this hospital's Waiting List without admission for the awaited procedure. This can occur for clinical reasons, transfer of the patient to another hospital, or at the request of the patient.

Casemix Funded

A system of funding hospitals according to the actual number and type of services that they provide. Casemix funding was introduced for most Victorian public hospitals in July 1993.

Coronary Care

A hospital unit with specialised staff and equipment to care for patients with heart disease.

Elective Admission

A planned admission to hospital. Emergency admissions and transfers from other hospitals are not counted as elective admissions.

Elective Surgery

Planned surgery that is not an emergency requiring hospital admission within 24 hours.

Emergency Admission

An unplanned admission to hospital due to unexpected illness or injury that requires urgent care.

Emergency Department

A hospital department that specialises in providing emergency care for people who are in need of urgent care (ambulance cases for example) and people who choose to seek treatment in an emergency department.

Intensive Care

A hospital unit with specialised staff and equipment to provide continuous care for critically ill, injured or post-operative patients.

Non Sameday Patient

In the context of this report, a non sameday patient is an inpatient who leaves hospital on a later date than when they were admitted.

Separation

When an inpatient leaves a hospital. This is the technical way of counting the number of inpatients treated by a hospital.

Step Down Bed

Hospital beds with specialised staff and equipment to care for patients who no longer need coronary or intensive care but are not yet ready to move to a general hospital ward.

Transfer

When an inpatient is moved from one hospital to another. This might be in order to obtain a specialised treatment not available at the first hospital or because of the patient's preferences.

Waiting List Hospital

A major public hospital that performs elective surgery for public patients and uses a waiting list to properly keep track of people who require elective surgery.