

Hospital Services Report

December quarter 2001

Notes

This document contains the most up-to-date information available at the time of preparation.

This *Hospital Services Report* is available on the Department of Human Services Internet site located at:

<http://www.health.vic.gov.au/hsr/index.htm>

Design and production by Department of Human Services, Melbourne, Victoria.

December 2001

© Copyright Department of Human Services 2001.

This publication is copyright. No part may be reproduced by any process except in accordance with the provisions of the *Copyright Act 1968*.

Contents

| | |
|--|-----------|
| <i>Introduction</i> | 1 |
| 1. Patients waiting for residential aged care placement | 2 |
| 2. Hospital admitted patient activity | 4 |
| 3. Access to emergency services | 6 |
| 4. Access to critical care services | 15 |
| 5. Access to elective surgery | 17 |
| 6. Private health insurance | 28 |
| 7. Glossary | 29 |

Introduction

Consumers, health care providers and government all need information on the quality of health services. Public access to information assists consumers to understand the health care system, it assists providers of health services in planning and increases the accountability of the Department of Human Services to the people in the state of Victoria, Australia.

The *Hospital Services Report* was introduced in 1995. This edition includes data for the December quarter 2001, which covers the months of October, November and December.

The information included in this report is often requested from the Department. Since technical information of this nature is very difficult to interpret, each graph and table needs to be carefully considered in the context of the complexity of the health care system. Department staff, hospital staff, general practitioners and other health care professionals may be able to assist you to interpret this report.

A number of graphs and tables refer to major metropolitan hospitals.

The major metropolitan hospitals include:

Angliss Hospital

Austin & Repatriation Medical Centre

- Austin campus

- Repatriation campus

Box Hill Hospital

Dandenong Hospital

Frankston Hospital

Maroondah Hospital

Monash Medical Centre

- Clayton campus

- Moorabbin campus

Royal Melbourne Hospital

St Vincent's Hospital

Sunshine Hospital

The Alfred

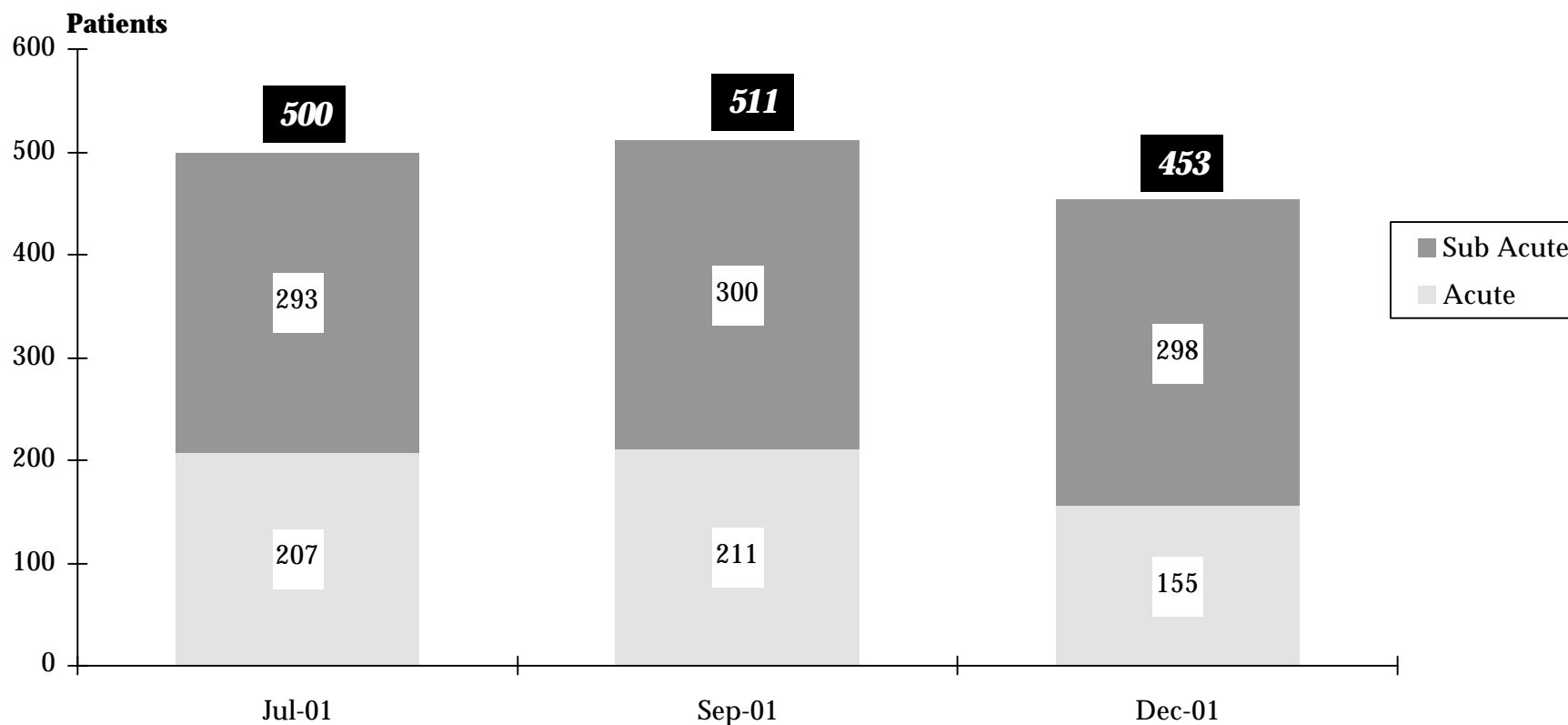
The Northern Hospital

Western Hospital

1. Patients waiting for residential aged care placement

How many patients are waiting for residential aged care placements?

Figure 1.1 Number of acute and sub acute patients waiting for residential aged care placement ^{1 2}



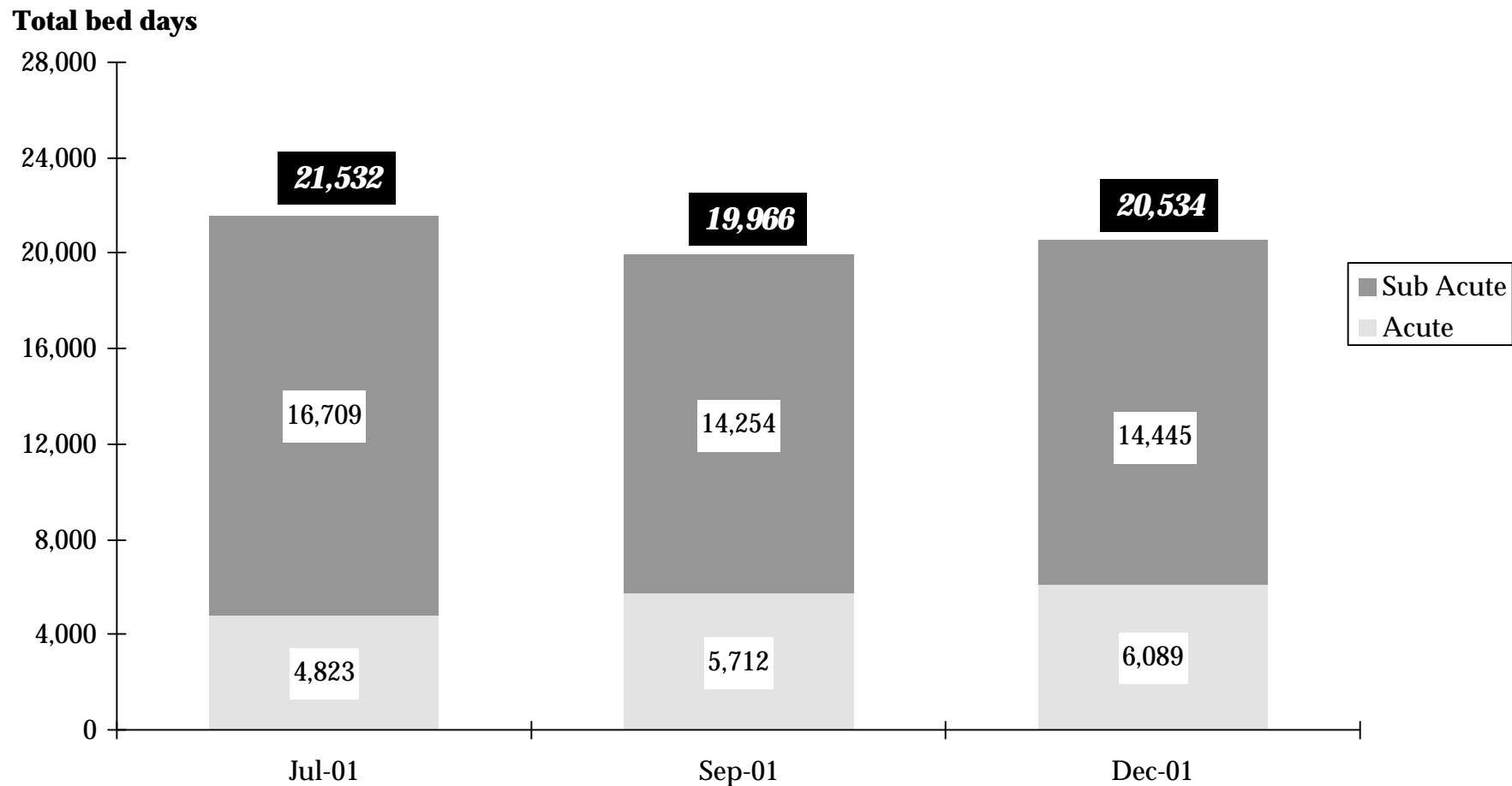
¹ Hospitals reporting sub acute are Angliss, Anne Caudle, Bundoora Extended Care, Bethlehem, Broadmeadows, Caritas Christi, Caulfield General, Dandenong, Goulburn Valley, Grace McKellar, Hampton, Kingston, Latrobe Regional, Maroondah, Mt Eliza, Melbourne Extended Care Rehabilitation Service, Peter James, Queen Elizabeth Centre, Royal Talbot, St George's, Sunshine and Williamstown.

² Hospitals reporting acute are The Alfred, Angliss, Austin & Repatriation, Ballarat, Barwon Health, Bendigo, Box Hill, Dandenong, Frankston, Goulburn Valley, Latrobe Regional, Maroondah, Monash Medical Centre (Clayton & Moorabbin), The Northern, Rosebud, Royal Melbourne, Sandringham, St Vincent's, Sunshine, Western and Williamstown.

Source: Bi-monthly Bed Census.

How many bed days are spent waiting for residential aged care placements?

Figure 1.2 Number of bed days patients wait for residential aged care placement ¹



¹ Notes for Figure 1.1 apply.
Source: Bi-monthly Bed Census.

2. Hospital Admitted Patient Activity

How many patients are admitted to hospital?

Table 2.1 Admitted patients by individual hospital^{1 2}

| Hospital | December quarter 2000 | September quarter 2001 | December quarter 2001 | % Change December 2000 to December 2001 |
|--|-----------------------|------------------------|-----------------------|---|
| Major metropolitan hospitals ³ | | | | |
| Angliss Hospital | 5,964 | 5,971 | 5,671 | -4.9% |
| Austin & Repatriation Medical Centre | 15,393 | 17,044 | 17,163 | 11.5% |
| Box Hill Hospital | 9,130 | 9,289 | 9,352 | 2.4% |
| Dandenong Hospital | 7,382 | 6,609 | 7,090 | -4.0% |
| Frankston Hospital | 9,860 | 10,262 | 10,419 | 5.7% |
| Maroondah Hospital | 4,189 | 4,450 | 4,673 | 11.6% |
| Monash Medical Centre | 18,763 | 19,784 | 19,654 | 4.7% |
| Royal Melbourne Hospital | 17,030 | 18,569 | 18,999 | 11.6% |
| St Vincent's Hospital | 10,563 | 10,838 | 11,112 | 5.2% |
| Sunshine Hospital ⁴ | 4,368 | 5,828 | 6,665 | 52.6% |
| The Alfred | 11,512 | 13,699 | 13,826 | 20.1% |
| The Northern Hospital | 6,425 | 6,666 | 6,654 | 3.6% |
| Western Hospital ⁴ | 8,539 | 7,360 | 7,981 | -6.5% |
| Other metropolitan hospitals | | | | |
| Caulfield General Medical Centre | 502 | 426 | 528 | 5.2% |
| Mercy Public Hospital, East Melbourne | 5,116 | 4,717 | 4,575 | -10.6% |
| Peter MacCallum Cancer Institute | 3,167 | 3,446 | 3,351 | 5.8% |
| Royal Children's Hospital | 7,234 | 7,423 | 7,273 | 0.5% |
| Royal Women's Hospital | 6,811 | 6,680 | 6,542 | -3.9% |
| Sandringham & District Memorial Hospital | 3,201 | 3,639 | 3,772 | 17.8% |
| The Royal Victorian Eye and Ear Hospital | 3,052 | 3,332 | 3,228 | 5.8% |
| Other metropolitan hospitals | 10,586 | 11,912 | 11,842 | 11.9% |

¹ Data refer to the number of 'separations' (ie. the number of patients that have been discharged from hospital).

² 2000/2001 data are provisional.

³ Major metropolitan hospitals contain the campuses listed in the Introduction.

⁴ Change in activity is as a result of the opening of new beds at Sunshine since 2 July 2001.

Table 2.1 Admitted patients by individual hospital (continued)

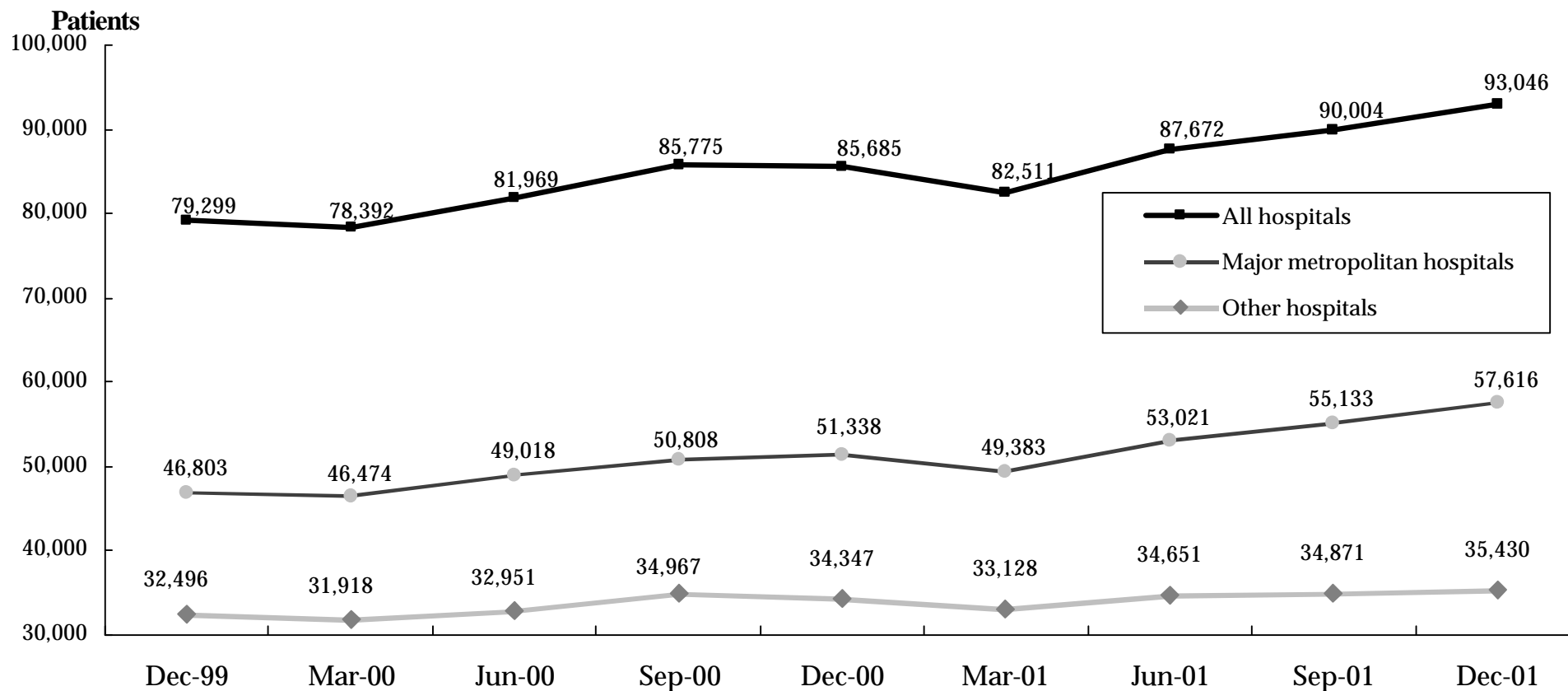
| Hospital | December quarter 2000 | September quarter 2001 | December quarter 2001 | % Change December 2000 to December 2001 |
|-----------------------------------|--------------------------|---------------------------|--------------------------|--|
| Major regional hospitals | | | | |
| Ballarat Health Services | 5,749 | 6,220 | 6,046 | 5.2% |
| Barwon Health | 11,791 | 11,998 | 12,390 | 5.1% |
| Bendigo Health Care Group | 5,242 | 5,394 | 5,306 | 1.2% |
| Goulburn Valley Health | 4,430 | 4,449 | 4,624 | 4.4% |
| Latrobe Regional Hospital | 5,336 | 5,348 | 5,610 | 5.1% |
| Other rural hospitals | | | | |
| Central Gippsland Health Service | 2,330 | 2,601 | 2,627 | 12.7% |
| South West Healthcare | 3,477 | 3,495 | 3,598 | 3.5% |
| Wangaratta District Base Hospital | 2,663 | 2,970 | 2,850 | 7.0% |
| Wimmera Health Care Group | 2,257 | 2,214 | 2,208 | -2.2% |
| Wodonga Regional Health Service | 3,744 | 4,124 | 4,184 | 11.8% |
| Other rural hospitals | 35,167 | 35,786 | 35,559 | 1.1% |
| Total all public hospitals | 250,973 | 262,543 | 265,372 | 5.7% |

Source: Victorian Admitted Episode Dataset (17 February 2002 update).

3. Access to Emergency Services

How many emergency patients are admitted to hospital?

Figure 3.1 Patients admitted to public hospitals requiring emergency care^{1 2}



¹ Major metropolitan hospitals contain the campuses listed in the Introduction.

² December quarter 2001 data are provisional.

How many emergency patients are admitted to hospital?

Table 3.1 Emergency admissions^{1 2}

| Hospital | December quarter 2000 | September quarter 2001 | December quarter 2001 | % Change September 2001 to December 2001 | % Change December 2000 to December 2001 |
|--|-----------------------|------------------------|-----------------------|--|---|
| Major metropolitan hospitals ³ | | | | | |
| Angliss Hospital | 2,130 | 2,482 | 2,354 | -5.2% | 10.5% |
| Austin and Repatriation Medical Centre | 3,982 | 4,324 | 4,402 | 1.8% | 10.5% |
| Box Hill Hospital | 4,021 | 4,260 | 4,430 | 4.0% | 10.2% |
| Dandenong Hospital | 4,746 | 4,136 | 4,783 | 15.6% | 0.8% |
| Frankston Hospital | 5,216 | 5,513 | 5,674 | 2.9% | 8.8% |
| Maroondah Hospital | 2,451 | 2,673 | 2,907 | 8.8% | 18.6% |
| Monash Medical Centre | 6,427 | 6,723 | 6,731 | 0.1% | 4.7% |
| Royal Melbourne Hospital | 5,373 | 5,624 | 5,818 | 3.4% | 8.3% |
| St Vincent's Hospital | 3,455 | 3,812 | 3,844 | 0.8% | 11.3% |
| Sunshine Hospital ⁴ | 1,085 | 2,349 | 3,018 | 28.5% | 178.2% |
| The Alfred | 4,214 | 5,777 | 5,986 | 3.6% | 42.1% |
| The Northern Hospital | 3,179 | 3,477 | 3,430 | -1.4% | 7.9% |
| Western Hospital ⁴ | 5,059 | 3,983 | 4,239 | 6.4% | -16.2% |
| Major hospitals total | 51,338 | 55,133 | 57,616 | 4.5% | 12.2% |
| Other hospitals total | 34,347 | 34,871 | 35,430 | 1.6% | 3.2% |
| Grand total | 85,685 | 90,004 | 93,046 | 3.4% | 8.6% |

¹ Data exclude elective, maternity, newborn and statistical admissions.

² Data refer to the number of 'separations' (ie. the number of patients that have been discharged from hospital).

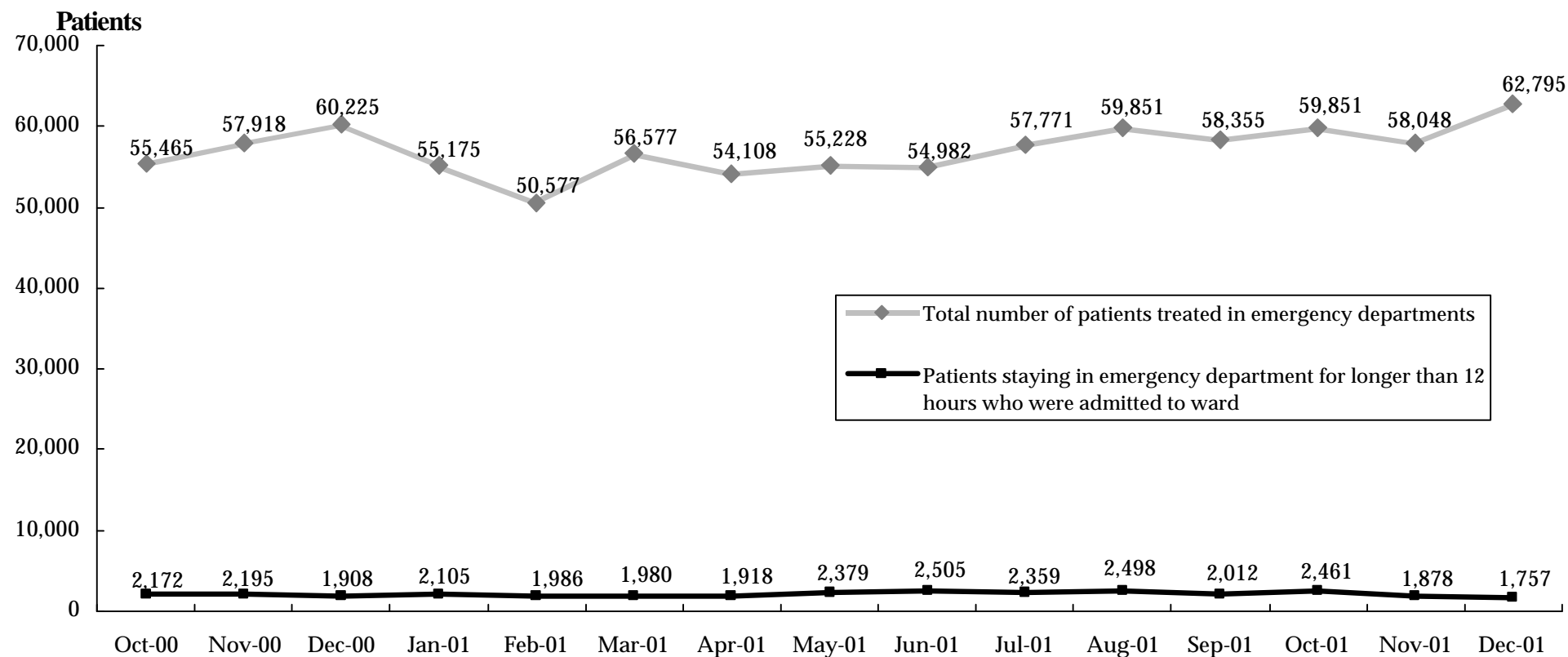
³ Major metropolitan hospitals contain the campuses listed in the Introduction.

⁴ Changes in activity reflect the opening of an adult emergency department at Sunshine on 2 July 2001.

Source: Victorian Admitted Episode Dataset (17 February 2002 update).

How many patients stay for an extended period in the emergency department?

Figure 3.2 Patients staying in emergency departments for over 12 hours while waiting for a hospital bed ^{1 2 3}



¹ The period of 'stay' is calculated from the time the patient arrives in the emergency department to the time when the patient leaves the emergency department.

² Patients treated in DHS sponsored Chest Pain Evaluation Area Pilots are excluded from these figures – up to 30 June 2001.

³ December quarter 2001 data are provisional.

Source: Victorian Emergency Minimum Dataset.

How many patients are treated in each hospital emergency department?

Table 3.2 Patients treated in hospital emergency departments, by Individual Hospitals^{1 2}

| Hospital | December quarter 2000 | September quarter 2001 | December quarter 2001 | % Change December 2000 to December 2001 |
|--|-----------------------|------------------------|-----------------------|---|
| Major metropolitan hospitals ³ | | | | |
| Angliss Hospital | 8,094 | 8,413 | 8,749 | 8.1% |
| Austin and Repatriation Medical Centre | 9,041 | 8,908 | 9,468 | 4.7% |
| Box Hill Hospital | 8,929 | 8,987 | 8,935 | 0.1% |
| Dandenong Hospital | 9,722 | 10,211 | 10,379 | 6.8% |
| Frankston Hospital | 9,427 | 9,880 | 9,983 | 5.9% |
| Maroondah Hospital | 7,459 | 7,410 | 7,773 | 4.2% |
| Monash Medical Centre | 12,561 | 12,577 | 12,733 | 1.4% |
| Royal Melbourne Hospital | 11,093 | 11,021 | 12,116 | 9.2% |
| St Vincent's Hospital | 7,826 | 7,552 | 7,946 | 1.5% |
| Sunshine Hospital ⁴ | 6,696 | 10,423 | 11,234 | 67.8% |
| The Alfred | 9,610 | 8,795 | 9,330 | -2.9% |
| The Northern Hospital | 11,019 | 10,522 | 11,207 | 1.7% |
| Western Hospital | 10,222 | 8,150 | 7,991 | -21.8% |
| Other metropolitan hospitals | | | | |
| Royal Children's Hospital | 13,098 | 14,671 | 13,062 | -0.3% |
| Major regional hospitals | | | | |
| Ballarat Health Services | 7,886 | 7,639 | 7,968 | 1.0% |
| Barwon Health | 9,396 | 9,224 | 10,044 | 6.9% |
| Bendigo Health Care Group | 8,088 | 8,363 | 8,323 | 2.9% |
| Goulburn Valley Health | 6,478 | 6,440 | 6,613 | 2.1% |
| Latrobe Regional Hospital | 6,963 | 6,791 | 6,840 | -1.8% |
| Total ⁴ | 173,608 | 175,977 | 180,694 | 4.1% |

¹ Data include all emergency department patients, that is, they include patients who are subsequently admitted to hospital and patients who are treated in the emergency department without being admitted to hospital.

² December quarter 2001 data are provisional.

³ Major metropolitan hospitals contain the campuses listed in the Introduction.

⁴ A new adult emergency department opened at Sunshine Hospital on 2 July 2001, data is now incorporated for the December quarter 2000.

Table 3.3 Patients staying in selected public hospital emergency departments for over 12 hours while waiting for a hospital bed ^{1 2 3 4}

| Hospital | December quarter 2000 | | September quarter 2001 | | December quarter 2001 | |
|--|-----------------------|--------------|------------------------|--------------|-----------------------|--------------|
| | Numbers | Percentage | Numbers | Percentage | Numbers | Percentage |
| Major metropolitan hospitals ⁵ | | | | | | |
| Angliss Hospital | 209 | 13.5% | 132 | 9.0% | 134 | 9.3% |
| Austin and Repatriation Medical Centre | 681 | 27.9% | 817 | 31.7% | 458 | 17.0% |
| Box Hill Hospital | 344 | 15.4% | 592 | 23.4% | 366 | 13.4% |
| Dandenong Hospital | 563 | 25.5% | 472 | 21.0% | 712 | 32.4% |
| Frankston Hospital | 572 | 22.5% | 717 | 24.1% | 611 | 20.8% |
| Maroondah Hospital | 255 | 19.6% | 389 | 25.7% | 369 | 19.6% |
| Monash Medical Centre | 857 | 31.1% | 980 | 32.2% | 1,097 | 35.2% |
| Royal Melbourne Hospital | 884 | 33.9% | 951 | 34.2% | 887 | 27.7% |
| St Vincent's Hospital | 576 | 32.1% | 199 | 9.6% | 104 | 4.7% |
| Sunshine Hospital ⁶ | n.a | n.a. | 16 | 1.2% | 57 | 3.7% |
| The Alfred | 660 | 32.5% | 773 | 40.7% | 660 | 31.2% |
| The Northern Hospital | 530 | 26.6% | 608 | 29.5% | 318 | 15.2% |
| Western Hospital | 106 | 3.6% | 71 | 2.9% | 115 | 5.0% |
| Other metropolitan hospitals | | | | | | |
| Royal Children's Hospital | 0 | 0.0% | 28 | 1.3% | 16 | 0.7% |
| Major regional hospitals | | | | | | |
| Ballarat Health Services | 0 | 0.0% | 0 | 0.0% | 1 | 0.1% |
| Barwon Health | 38 | 1.1% | 96 | 2.6% | 106 | 2.7% |
| Bendigo Health Care Group | 0 | 0.0% | 0 | 0.0% | 0 | 0.0% |
| Goulburn Valley Health | 0 | 0.0% | 0 | 0.0% | 0 | 0.0% |
| Latrobe Regional Hospital | 0 | 0.0% | 28 | 2.7% | 85 | 7.8% |
| Total | 6,275 | 16.5% | 6,869 | 16.9% | 6,096 | 14.0% |

¹ The period of 'stay' is calculated from the time the patient arrives in the emergency department to the time when the patient leaves the emergency department.

² Patients treated in DHS sponsored Chest Pain Evaluation Area Pilots are excluded from these figures – up to 30 June 2001.

³ Percentage data represent the number of emergency department patients admitted to ward who spend more than 12 hours in the emergency department prior to being admitted as a proportion of all emergency department patients admitted to ward.

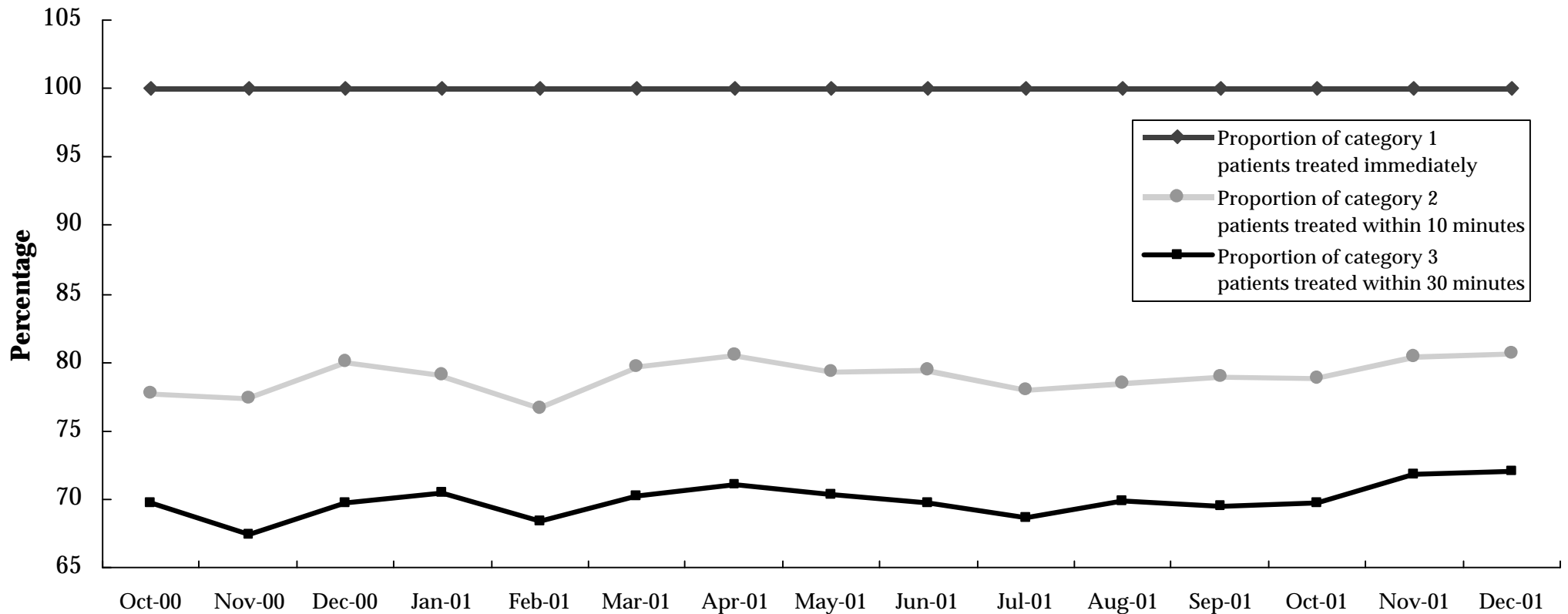
⁴ December quarter 2001 data are provisional.

⁵ Major metropolitan hospitals contain the campuses listed in the Introduction.

⁶ A new adult emergency department opened at Sunshine Hospital on 2 July 2001, data is now incorporated for the December quarter 2000.

How many emergency department patients are treated within ideal time?

Figure 3.3 Emergency department achievement of ACEM waiting times by triage category^{1 2}



¹ Waiting times are calculated as the time between presentation at the emergency department and commencement of treatment. The following Australasian College for Emergency Medicine (ACEM) patient categories and recommended treatment times are used:

Category 1: Resuscitation case requiring immediate treatment, for example, major trauma, cardiac arrest, unconsciousness, shock.

Category 2: Emergency case requiring treatment within 10 minutes, for example, severe trauma, chest pain, severe pain, severe breathing difficulty.

Category 3: Urgent case requiring treatment within 30 minutes, for example, moderate trauma, infection, breathing difficulty.

² December quarter 2001 data are provisional.

How many emergency department patients are treated within ideal time?

Table 3.4 Patients treated in selected public hospital emergency departments in triage category 1, 2 or 3 within ACEM recommended waiting times: December quarter 2001^{1,2}

| Hospital | Triage Category 1 | | Triage Category 2 | | Triage Category 3 | |
|---|-------------------|---------------------|-------------------|-----------------------|-------------------|-----------------------|
| | Total patients | Treated immediately | Total patients | Treated in 10 minutes | Total patients | Treated in 30 minutes |
| Major metropolitan hospitals³ | | | | | | |
| Angliss Hospital | 27 | 100% | 548 | 83% | 2,318 | 79% |
| Austin and Repatriation Medical Centre | 107 | 100% | 747 | 71% | 3,258 | 62% |
| Box Hill Hospital | 80 | 100% | 400 | 82% | 3,415 | 56% |
| Dandenong Hospital | 100 | 100% | 996 | 78% | 2,900 | 56% |
| Frankston Hospital | 89 | 100% | 1,629 | 81% | 4,291 | 55% |
| Maroondah Hospital | 54 | 100% | 476 | 84% | 2,240 | 69% |
| Monash Medical Centre | 243 | 100% | 1,683 | 79% | 4,373 | 70% |
| Royal Melbourne Hospital | 183 | 100% | 1,449 | 80% | 3,391 | 83% |
| St Vincent's Hospital | 111 | 100% | 653 | 77% | 3,225 | 75% |
| Sunshine Hospital ⁴ | 64 | 100% | 646 | 69% | 3,277 | 69% |
| The Alfred | 297 | 100% | 1,095 | 84% | 2,974 | 80% |
| The Northern Hospital | 122 | 100% | 740 | 77% | 3,763 | 67% |
| Western Hospital | 143 | 100% | 799 | 87% | 2,562 | 89% |
| Other metropolitan hospitals | | | | | | |
| Royal Children's Hospital | 25 | 100% | 309 | 87% | 2,873 | 77% |
| Major regional hospitals | | | | | | |
| Ballarat Health Services | 58 | 100% | 244 | 84% | 1,450 | 90% |
| Barwon Health | 72 | 100% | 825 | 76% | 2,976 | 74% |
| Bendigo Health Care Group | 32 | 100% | 456 | 81% | 2,300 | 73% |
| Goulburn Valley Health | 13 | 100% | 355 | 83% | 1,852 | 77% |
| Latrobe Regional Hospital | 35 | 100% | 337 | 94% | 1,431 | 83% |
| Total | 1,855 | 100% | 14,387 | 80% | 54,869 | 71% |

¹ Australasian College for Emergency Medicine (ACEM).

² December quarter 2001 data are provisional.

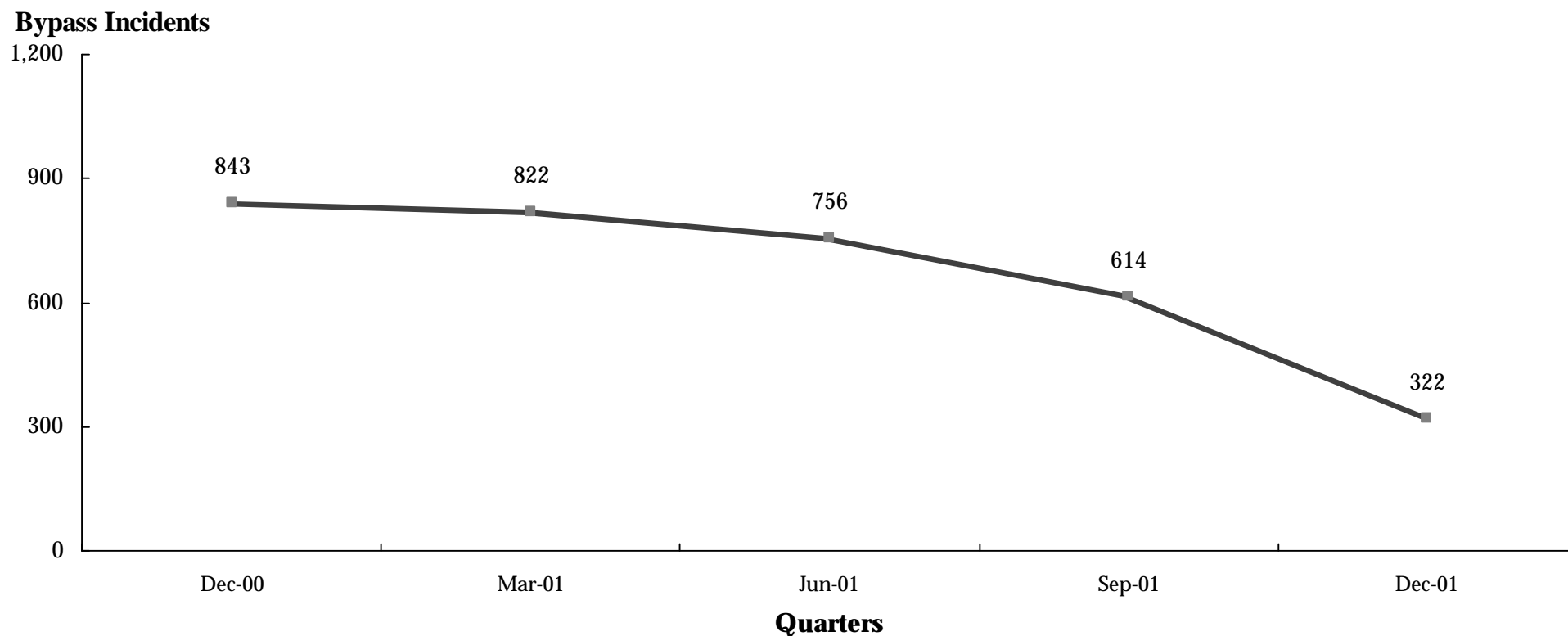
³ Major metropolitan hospitals contain the campuses listed in the Introduction.

⁴ A new adult emergency department opened at Sunshine Hospital on 2 July 2001, data is now incorporated for the December quarter 2000.

Source: Victorian Emergency Minimum Dataset.

How often do hospital emergency departments go on 'bypass'?

Figure 3.4 Periods of ambulance bypass of public hospitals ^{1 2}



¹ Hospital emergency departments can request to go on ambulance bypass when the emergency department has reached maximum capacity and the treatment of patients already in the emergency department could be significantly compromised with the arrival, by ambulance, of further patients. Each individual period of ambulance bypass is for two hours or less.

² Bypass policy allows for critically ill or injured patients to be taken to the nearest hospital emergency department regardless of bypass status.

Source: Metropolitan Ambulance Service.

How often do hospital emergency departments go on 'bypass'?

Table 3.5 Periods of ambulance bypass, by Individual Hospital^{1 2}

| Hospital | Oct-00 | Nov-00 | Dec-00 | Total Dec-00 Qtr | Jan-01 | Feb-01 | Mar-01 | Total Mar-01 Qtr | Apr-01 | May-01 | Jun-01 | Total Jun-01 Qtr | Jul-01 | Aug-01 | Sep-01 | Total Sep-01 Qtr | Oct-01 | Nov-01 | Dec-01 | Total Dec-01 Qtr |
|--|------------|------------|------------|---------------------------------|------------|------------|------------|---------------------------------|------------|------------|------------|---------------------------------|------------|------------|------------|---------------------------------|------------|-----------|-----------|---------------------------------|
| Major metropolitan hospitals ³ | | | | | | | | | | | | | | | | | | | | |
| Angliss Hospital | 8 | 12 | 1 | 21 | 2 | 2 | 2 | 6 | 2 | 5 | 14 | 21 | 3 | 1 | 5 | 9 | 3 | 3 | 0 | 6 |
| Austin & Repatriation Medical Centre | 13 | 19 | 12 | 44 | 23 | 29 | 8 | 60 | 16 | 11 | 24 | 51 | 21 | 19 | 8 | 48 | 16 | 1 | 1 | 18 |
| Box Hill Hospital | 21 | 9 | 17 | 47 | 17 | 11 | 11 | 39 | 17 | 16 | 12 | 45 | 18 | 12 | 12 | 42 | 15 | 1 | 2 | 18 |
| Dandenong Hospital | 27 | 14 | 19 | 60 | 11 | 36 | 19 | 66 | 16 | 15 | 18 | 49 | 7 | 12 | 6 | 25 | 24 | 10 | 7 | 41 |
| Frankston Hospital | 50 | 40 | 20 | 110 | 18 | 28 | 39 | 85 | 17 | 31 | 8 | 56 | 13 | 23 | 33 | 69 | 11 | 13 | 13 | 37 |
| Maroondah Hospital | 13 | 23 | 42 | 78 | 17 | 18 | 23 | 58 | 22 | 21 | 33 | 76 | 24 | 20 | 13 | 57 | 11 | 10 | 11 | 32 |
| Monash Medical Centre | 53 | 43 | 15 | 111 | 47 | 64 | 12 | 123 | 27 | 36 | 48 | 111 | 18 | 15 | 21 | 54 | 20 | 17 | 12 | 49 |
| Royal Melbourne Hospital | 69 | 46 | 47 | 162 | 46 | 36 | 51 | 133 | 45 | 56 | 72 | 173 | 52 | 64 | 21 | 137 | 21 | 1 | 4 | 26 |
| St Vincent's Hospital | 7 | 15 | 16 | 38 | 15 | 11 | 13 | 39 | 28 | 20 | 14 | 62 | 11 | 16 | 7 | 34 | 15 | 6 | 2 | 23 |
| Sunshine Hospital ⁴ | - | - | - | n.a. | - | - | - | n.a. | - | - | - | n.a. | 0 | 0 | 0 | 0 | 2 | 1 | 3 | 6 |
| The Alfred | 38 | 46 | 29 | 113 | 16 | 42 | 16 | 74 | 13 | 12 | 5 | 30 | 19 | 17 | 38 | 74 | 44 | 1 | 5 | 50 |
| The Northern Hospital | 24 | 13 | 8 | 45 | 42 | 34 | 32 | 108 | 32 | 6 | 30 | 68 | 32 | 23 | 7 | 62 | 13 | 1 | 0 | 14 |
| Western Hospital | 2 | 6 | 6 | 14 | 11 | 10 | 10 | 31 | 0 | 11 | 3 | 14 | 1 | 2 | 0 | 3 | 2 | 0 | 0 | 2 |
| Total | 325 | 286 | 232 | 843 | 265 | 321 | 236 | 822 | 235 | 240 | 281 | 756 | 219 | 224 | 171 | 614 | 197 | 65 | 60 | 322 |

¹ Hospital emergency departments are bypassed by ambulances when the emergency department has reached maximum capacity and the treatment of patients already in the emergency department could be significantly compromised by the ambulance arrival of an additional patient requiring emergency treatment. Each individual period of ambulance bypass is for two hours or less.

² Metropolitan Ambulance Service (MAS) response times are now being reported in MAS Response Report: A Quarterly Statistical Review of MAS, Melbourne. Copies of the Response Report can be obtained from MAS, Corporate Planning and Corporate Communications Unit, phone (03) 9840 3648.

³ Major metropolitan hospitals contain the campuses listed in the Introduction.

⁴ A new adult emergency department opened at Sunshine Hospital on 2 July 2001, data is now incorporated for the December quarter 2000.

Source: Metropolitan Ambulance Service and, due to ambulance industrial dispute in May and June 2001, the Metropolitan Health Services.

4. Access to Critical Care Services

How many hospital beds are available for patients who need intensive care?

Table 4.1 Average number of public hospital intensive care beds available and open at 9.00a.m., by Month^{1 2 3 4}

| | Oct-00 | Nov-00 | Dec-00 | Jan-01 | Feb-01 | Mar-01 | Apr-01 | May-01 | Jun-01 | Jul-01 | Aug-01 | Sep-01 | Oct-01 | Nov-01 | Dec-01 |
|-------------------------|--------|--------|--------|--------|--------|--------|--------|--------|--------|--------|--------|--------|--------|--------|--------|
| Available ⁵ | 3.0 | 3.5 | 4.2 | 4.4 | 3.9 | 4.2 | 4.6 | 2.9 | 4.9 | 2.3 | 3.2 | 2.8 | 4.6 | 4.4 | 5.8 |
| Total Open ⁶ | 98.9 | 100.4 | 98.4 | 103.1 | 104.7 | 105.9 | 105.8 | 107.8 | 105.6 | 105.3 | 102.8 | 104.4 | 98.6 | 99.5 | 97.2 |

¹ Based upon hospital census taken at 9.00a.m. daily.

² The data in this table represents an average for each month and varies from Table 4.3 which gives averages for the quarter.

³ Excludes high dependency beds

⁴ Changes to reporting in the December quarter 2001 account for the lower number of beds open. Previously, Northern, Maroondah and Western included some high dependency beds.

⁵ Available beds are unoccupied beds which are staffed, functional and available to receive new patients.

⁶ Total open beds are all functioning and staffed beds, regardless of whether they are occupied.

Cardio thoracic beds at Royal Melbourne Hospital and The Alfred have been included in total open beds since November 2000.

Source: Office of the Coordinator of Emergency and Critical Care Services.

How many hospital beds are available for patients who need coronary care?

Table 4.2 Average number of public hospital coronary care beds available and open at 9.00a.m., by Month¹

| | Oct-00 | Nov-00 | Dec-00 | Jan-01 | Feb-01 | Mar-01 | Apr-01 | May-01 | Jun-01 | Jul-01 | Aug-01 | Sep-01 | Oct-01 | Nov-01 | Dec-01 |
|------------|--------|--------|--------|--------|--------|--------|--------|--------|--------|--------|--------|--------|--------|--------|--------|
| Available | 4.6 | 3.7 | 7.1 | 7.0 | 7.7 | 7.8 | 7.4 | 6.4 | 6.5 | 5.3 | 4.0 | 6.0 | 6.1 | 6.4 | 7.6 |
| Total Open | 68.3 | 70.2 | 71.2 | 71.9 | 71.4 | 74.9 | 73.3 | 72.3 | 72.9 | 71.8 | 72.6 | 73.2 | 73.8 | 74.0 | 73.6 |

¹ Notes under Table 4.1 apply.

Source: Office of the Coordinator of Emergency and Critical Care Services.

How many hospital beds are available for patients who need intensive care?

Table 4.3 Average number of public hospital intensive care beds available and open at 9.00a.m., by Hospital ^{1 2 3}

| Hospital | December quarter 2001 | |
|--|------------------------|-------------------------|
| | Available ⁴ | Total Open ⁵ |
| Major metropolitan hospitals ⁶ | | |
| Austin and Repatriation Medical Centre | 0.1 | 10.7 |
| Box Hill Hospital | 0.2 | 6.0 |
| Dandenong Hospital | 0.4 | 7.0 |
| Frankston Hospital | 0.5 | 5.8 |
| Maroondah Hospital | 0.5 | 2.9 |
| Monash Medical Centre | 0.4 | 10.0 |
| Royal Melbourne Hospital | 0.6 | 15.5 |
| St Vincent's Hospital | 0.2 | 8.9 |
| Sunshine Hospital | 0.7 | 2.0 |
| The Alfred | 0.4 | 20.3 |
| The Northern Hospital | 0.3 | 4.3 |
| Western Hospital | 0.5 | 5.0 |
| Total ⁷ | 4.8 | 98.4 |

¹ Based upon hospital census taken at 9.00a.m. daily.

² Excludes high dependency beds

³ Changes to reporting in the December quarter 2001 account for the lower number of beds open. Previously, Northern, Maroondah and Western included some high dependency beds.

⁴ Available beds are unoccupied beds which are staffed, functional and available to receive new patients.

⁵ Total open beds are all functioning and staffed beds, regardless of whether they are occupied.
Cardio thoracic beds at Royal Melbourne Hospital and The Alfred have been included in total open beds since November 2000.

⁶ Major metropolitan hospitals contain the campuses listed in the Introduction.

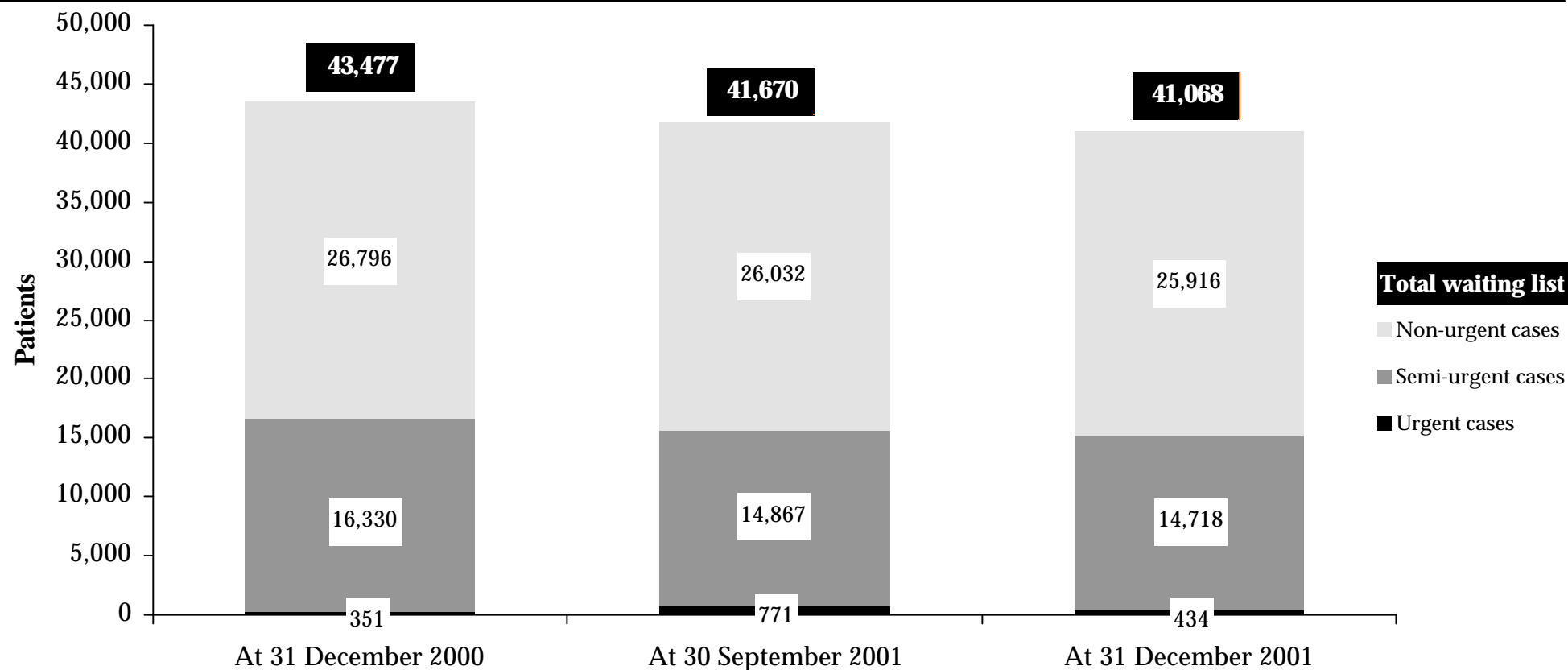
⁷ The data in this table represents an average for the quarter and varies from tables 4.1 and 4.2 which are averages for each month.

Source: Office of the Coordinator of Emergency and Critical Care Services.

5. Access To Elective Surgery

How many people are on hospital waiting lists for elective surgery?

Figure 5.1 Waiting list by urgency^{1 2 3 4}



¹ Waiting list numbers include all patients booked and waiting for elective surgery, in line with national definitions.

² The waiting list patient categories are:

- Urgent cases (waiting list category 1): Admission within 30 days desirable for a condition that has the potential to deteriorate quickly to the point that it may become an emergency.
- Semi-urgent cases (waiting list category 2): Admission within 90 days desirable for a condition causing some pain, dysfunction or disability but which is not likely to deteriorate quickly or become an emergency.
- Non-urgent cases (waiting list category 3): Admission at some time in the future acceptable for a condition causing minimal or no pain, dysfunction or disability which is very unlikely to deteriorate quickly and which does not have the potential to become an emergency.

³ December 2000 and September quarter 2001 data have been amended from the previous reports.

⁴ December quarter 2001 data are provisional.

How many people are on hospital waiting lists for elective surgery?

Table 5.1 Waiting lists by Urgency, by Individual Hospital^{1 2 3}

| Hospital | Urgent cases | | | Semi-urgent cases | | | Non-urgent cases | | |
|---|--------------|-------------|-------------|-------------------|-------------|-------------|------------------|-------------|-------------|
| | 31 Dec 2000 | 30 Sep 2001 | 31 Dec 2001 | 31 Dec 2000 | 30 Sep 2001 | 31 Dec 2001 | 31 Dec 2000 | 30 Sep 2001 | 31 Dec 2001 |
| Major metropolitan hospitals⁴ | | | | | | | | | |
| Angliss Hospital | 6 | 18 | 4 | 182 | 209 | 183 | 240 | 215 | 240 |
| Austin and Repatriation Medical Centre | 21 | 48 | 15 | 1,029 | 1,255 | 1,416 | 1,430 | 1,270 | 1,203 |
| Box Hill Hospital | 29 | 40 | 10 | 430 | 504 | 428 | 622 | 645 | 617 |
| Dandenong Hospital | 11 | 47 | 26 | 688 | 776 | 865 | 1,877 | 1,894 | 2,062 |
| Frankston Hospital | 38 | 62 | 58 | 1,952 | 1,919 | 2,145 | 1,992 | 1,285 | 1,315 |
| Maroondah Hospital | 10 | 8 | 13 | 261 | 232 | 258 | 1,025 | 580 | 614 |
| Monash Medical Centre | 23 | 93 | 69 | 865 | 1,005 | 1,051 | 3,055 | 2,868 | 2,938 |
| Royal Melbourne Hospital | 17 | 98 | 29 | 874 | 1,011 | 1,058 | 2,013 | 1,822 | 1,765 |
| St Vincent's Hospital | 23 | 41 | 31 | 1,085 | 1,054 | 1,090 | 812 | 671 | 601 |
| Sunshine Hospital | 2 | 8 | 9 | 72 | 147 | 184 | 307 | 449 | 411 |
| The Alfred | 62 | 77 | 68 | 2,126 | 1,680 | 1,539 | 1,892 | 1,443 | 1,412 |
| The Northern Hospital | 15 | 46 | 19 | 921 | 965 | 802 | 2,320 | 2,074 | 2,151 |
| Western Hospital | 12 | 33 | 5 | 638 | 795 | 689 | 1,011 | 1,002 | 858 |
| Other metropolitan hospitals | | | | | | | | | |
| Royal Children's Hospital | 6 | 21 | 10 | 145 | 177 | 156 | 1,137 | 1,092 | 1,083 |
| Royal Women's Hospital | 23 | 29 | 10 | 251 | 239 | 275 | 448 | 375 | 318 |
| Sandringham & District Memorial Hospital | 6 | 4 | 3 | 155 | 194 | 138 | 733 | 443 | 350 |
| The Royal Victorian Eye and Ear Hospital | 0 | 18 | 5 | 2,909 | 854 | 567 | 145 | 2,314 | 2,491 |

¹ Waiting list numbers include all patients booked and waiting for elective surgery, in line with national definitions.

² December quarter 2000 and September quarter 2001 data have been amended from the previous reports.

³ December quarter 2001 data are provisional.

⁴ Major metropolitan hospitals contain the campuses listed in the Introduction.

Table 5.1 Waiting lists by Urgency, by Individual Hospital (continued)

| Hospital | Urgent cases | | | Semi-urgent cases | | | Non-urgent cases | | |
|-----------------------------------|--------------|-------------|-------------|-------------------|-------------|-------------|------------------|-------------|-------------|
| | 31 Dec 2000 | 30 Sep 2001 | 31 Dec 2001 | 31 Dec 2000 | 30 Sep 2001 | 31 Dec 2001 | 31 Dec 2000 | 30 Sep 2001 | 31 Dec 2001 |
| Major regional hospitals | | | | | | | | | |
| Ballarat Health Services | 2 | 3 | 0 | 339 | 293 | 262 | 1,263 | 1,209 | 1,152 |
| Barwon Health | 4 | 11 | 5 | 469 | 612 | 680 | 1,865 | 1,988 | 2,103 |
| Bendigo Health Care Group | 19 | 18 | 16 | 328 | 411 | 363 | 803 | 761 | 807 |
| Goulburn Valley Health | 14 | 22 | 9 | 162 | 141 | 159 | 335 | 189 | 136 |
| Latrobe Regional Hospital | 6 | 13 | 8 | 137 | 109 | 119 | 828 | 633 | 585 |
| Other rural hospitals | | | | | | | | | |
| Wangaratta District Base Hospital | 0 | 2 | 8 | 280 | 111 | 103 | 101 | 279 | 280 |
| West Gippsland Hospital | 2 | 11 | 4 | 32 | 174 | 188 | 542 | 531 | 424 |
| Total | 351 | 771 | 434 | 16,330 | 14,867 | 14,718 | 26,796 | 26,032 | 25,916 |

Source: Elective Surgery Information System.

What is the throughput of people waiting for elective surgery?

Table 5.2 Admissions and cancellations, by Individual Hospital^{1 2 3}

| Hospital | Patients on Waiting Lists | | | Admissions from Waiting Lists | | | Patients Cancelled from Waiting Lists | | |
|---|---------------------------|----------------|----------------|-------------------------------|--------|--------|---------------------------------------|--------|--------|
| | at 31 Dec 2000 | at 30 Sep 2001 | at 31 Dec 2001 | During the Quarter | | | During the Quarter | | |
| | | | | Dec-00 | Sep-01 | Dec-01 | Dec-00 | Sep-01 | Dec-01 |
| Major metropolitan hospitals⁴ | | | | | | | | | |
| Angliss Hospital | 428 | 442 | 427 | 796 | 650 | 507 | 94 | 50 | 78 |
| Austin and Repatriation Medical Centre | 2,480 | 2,573 | 2,634 | 1,905 | 1,866 | 1,821 | 300 | 437 | 315 |
| Box Hill Hospital | 1,081 | 1,189 | 1,055 | 1,303 | 1,254 | 1,330 | 227 | 187 | 193 |
| Dandenong Hospital | 2,576 | 2,717 | 2,953 | 738 | 1,021 | 870 | 108 | 230 | 169 |
| Frankston Hospital | 3,982 | 3,266 | 3,518 | 1,093 | 1,246 | 1,244 | 410 | 466 | 203 |
| Maroondah Hospital | 1,296 | 820 | 885 | 774 | 770 | 770 | 116 | 187 | 173 |
| Monash Medical Centre | 3,943 | 3,966 | 4,058 | 2,308 | 2,243 | 2,188 | 448 | 403 | 448 |
| Royal Melbourne Hospital | 2,904 | 2,931 | 2,852 | 1,858 | 1,618 | 1,818 | 374 | 382 | 328 |
| St Vincent's Hospital | 1,920 | 1,766 | 1,722 | 1,159 | 1,445 | 1,297 | 233 | 476 | 264 |
| Sunshine Hospital | 381 | 604 | 604 | 675 | 906 | 980 | 133 | 167 | 147 |
| The Alfred | 4,080 | 3,200 | 3,019 | 1,450 | 1,760 | 1,379 | 232 | 455 | 355 |
| The Northern Hospital | 3,256 | 3,085 | 2,972 | 1,046 | 1,152 | 1,127 | 222 | 301 | 302 |
| Western Hospital | 1,661 | 1,830 | 1,552 | 1,254 | 1,007 | 1,187 | 411 | 444 | 450 |
| Other metropolitan hospitals | | | | | | | | | |
| Royal Children's Hospital | 1,288 | 1,290 | 1,249 | 2,408 | 2,666 | 2,519 | 212 | 254 | 231 |
| Royal Women's Hospital | 722 | 643 | 603 | 817 | 796 | 780 | 145 | 262 | 235 |
| Sandringham & District Memorial Hospital | 894 | 641 | 491 | 511 | 596 | 605 | 180 | 168 | 156 |
| The Royal Victorian Eye and Ear Hospital | 3,054 | 3,186 | 3,063 | 2,671 | 2,871 | 2,785 | 256 | 327 | 355 |

¹ Waiting list numbers include all patients booked and waiting for elective surgery, in line with national definitions.

² December quarter 2000 and September quarter 2001 data have been amended from the previous reports.

³ December quarter 2001 data are provisional.

⁴ Major metropolitan hospitals contain the campuses listed in the Introduction.

Table 5.2 Admissions and cancellations, by Individual Hospital (continued)

| Hospital | Patients on Waiting Lists | | | Admissions from Waiting Lists | | | Patients Cancelled from Waiting Lists | | |
|-----------------------------------|---------------------------|----------------|----------------|-------------------------------|---------------|---------------|---------------------------------------|--------------|--------------|
| | at 31 Dec 2000 | at 30 Sep 2001 | at 31 Dec 2001 | During the Quarter | | | During the Quarter | | |
| | | | | Dec-00 | Sep-01 | Dec-01 | Dec-00 | Sep-01 | Dec-01 |
| Major regional hospitals | | | | | | | | | |
| Ballarat Health Services | 1,604 | 1,505 | 1,414 | 602 | 703 | 650 | 270 | 95 | 223 |
| Barwon Health | 2,338 | 2,611 | 2,788 | 1,015 | 798 | 839 | 224 | 195 | 210 |
| Bendigo Health Care Group | 1,150 | 1,190 | 1,186 | 681 | 653 | 884 | 82 | 128 | 127 |
| Goulburn Valley Health | 511 | 352 | 304 | 643 | 623 | 519 | 100 | 93 | 70 |
| Latrobe Regional Hospital | 971 | 755 | 712 | 1,027 | 1,013 | 1,023 | 50 | 61 | 95 |
| Other rural hospitals | | | | | | | | | |
| Wangaratta District Base Hospital | 381 | 392 | 391 | 549 | 569 | 507 | 93 | 63 | 78 |
| West Gippsland Hospital | 576 | 716 | 616 | 400 | 558 | 513 | 107 | 117 | 96 |
| Total | 43,477 | 41,670 | 41,068 | 27,683 | 28,784 | 28,142 | 5,027 | 5,948 | 5,301 |

Source: Elective Surgery Information System.

How many people are on hospital waiting lists for longer than the ideal time?

Table 5.3 People on elective surgery waiting lists for longer than ideal time, by Individual Hospital ^{1 2 3}

| Hospital | Urgent cases waiting over 30 days | | | Semi-urgent cases waiting over 90 days | | |
|--|-----------------------------------|-------------|-------------|--|-------------|-------------|
| | 31 Dec 2000 | 30 Sep 2001 | 31 Dec 2001 | 31 Dec 2000 | 30 Sep 2001 | 31 Dec 2001 |
| Major metropolitan hospitals ⁴ | | | | | | |
| Angliss Hospital | 0 | 0 | 0 | 0 | 0 | 0 |
| Austin & Repatriation Medical Centre | 0 | 0 | 0 | 463 | 569 | 684 |
| Box Hill Hospital | 1 | 0 | 0 | 66 | 98 | 69 |
| Dandenong Hospital | 0 | 0 | 0 | 389 | 455 | 551 |
| Frankston Hospital | 0 | 0 | 0 | 1,301 | 1,067 | 1,356 |
| Maroondah Hospital | 0 | 0 | 0 | 64 | 52 | 64 |
| Monash Medical Centre | 0 | 0 | 0 | 337 | 359 | 428 |
| Royal Melbourne Hospital | 0 | 0 | 0 | 331 | 484 | 515 |
| St Vincent's Hospital | 0 | 0 | 0 | 620 | 504 | 550 |
| Sunshine Hospital | 0 | 0 | 0 | 8 | 27 | 28 |
| The Alfred | 0 | 0 | 0 | 1,480 | 1,201 | 1,073 |
| The Northern Hospital | 0 | 0 | 0 | 466 | 438 | 376 |
| Western Hospital | 0 | 0 | 0 | 280 | 343 | 315 |
| Other metropolitan hospitals | | | | | | |
| Royal Children's Hospital | 0 | 0 | 0 | 6 | 0 | 0 |
| Royal Women's Hospital | 0 | 0 | 0 | 0 | 0 | 0 |
| Sandringham & District Memorial Hospital | 0 | 0 | 0 | 43 | 57 | 42 |
| The Royal Victorian Eye and Ear Hospital | 0 | 0 | 0 | 1,506 | 279 | 189 |

¹ Waiting list numbers include all patients booked and waiting for elective surgery, in line with national definitions.

² December quarter 2000 and September quarter 2001 data have been amended from the previous reports.

³ December quarter 2001 data are provisional.

⁴ Major metropolitan hospitals contain the campuses listed in the Introduction.

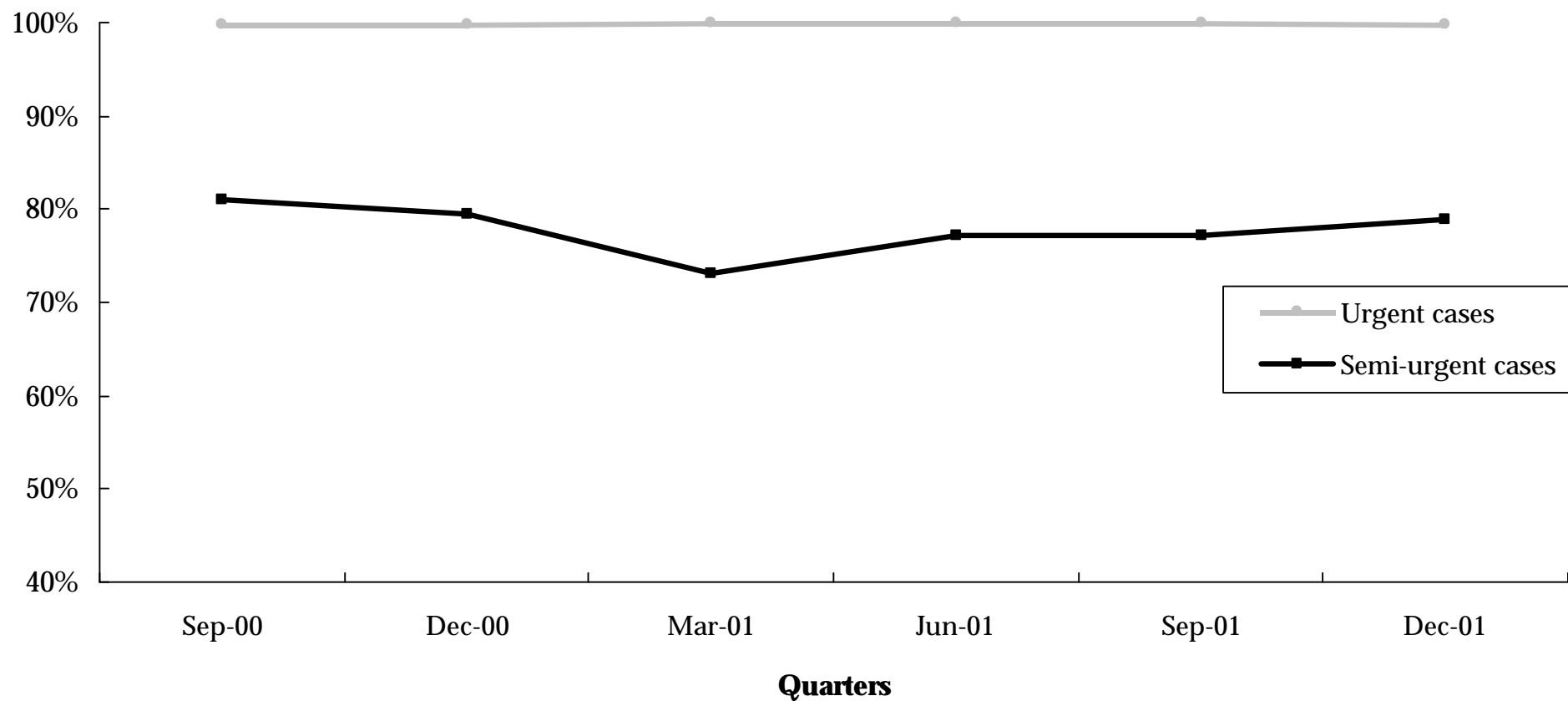
Table 5.3 People on elective surgery waiting lists for longer than ideal time, by Individual Hospital (continued)

| Hospital | Urgent cases waiting over 30 days | | | Semi-urgent cases waiting over 90 days | | |
|-----------------------------------|-----------------------------------|-------------|-------------|--|--------------|--------------|
| | 31 Dec 2000 | 30 Sep 2001 | 31 Dec 2001 | 31 Dec 2000 | 30 Sep 2001 | 31 Dec 2001 |
| Major regional hospitals | | | | | | |
| Ballarat Health Services | 0 | 0 | 0 | 135 | 102 | 115 |
| Barwon Health | 0 | 0 | 0 | 148 | 254 | 329 |
| Bendigo Health Care Group | 0 | 0 | 0 | 173 | 240 | 200 |
| Goulburn Valley Health | 0 | 0 | 0 | 1 | 4 | 3 |
| Latrobe Regional Hospital | 0 | 0 | 0 | 23 | 2 | 0 |
| Other rural hospitals | | | | | | |
| Wangaratta District Base Hospital | 0 | 0 | 0 | 108 | 13 | 14 |
| West Gippsland Hospital | 1 | 0 | 0 | 0 | 33 | 38 |
| Total | 2 | 0 | 0 | 7,948 | 6,581 | 6,939 |

Source: Elective Surgery Information System.

What percentage of patients are admitted within clinically ideal times?

Figure 5.2 Percentage of patients from elective surgery waiting lists who were admitted within the ideal time, by Urgency^{1 2}



¹ December 2000 and September quarter 2001 data have been amended from the previous reports.

² December quarter 2001 data are provisional.

What percentage of patients are admitted within clinically ideal times?

Table 5.4 Percentage of people from elective surgery waiting lists who were admitted within the ideal time, by Urgency, by Individual Hospital ^{1 2}

| Hospital | Urgent cases admitted within 30 days during the quarter | | | | Semi-urgent cases admitted within 90 days during the quarter | | | |
|--|---|------------|---------------|------------|--|------------|---------------|------------|
| | September 2001 | | December 2001 | | September 2001 | | December 2001 | |
| | Number | Percentage | Number | Percentage | Number | Percentage | Number | Percentage |
| Major metropolitan hospitals ³ | | | | | | | | |
| Angliss Hospital | 94 | 100.00% | 83 | 100.00% | 350 | 100.00% | 312 | 100.00% |
| Austin & Repatriation Medical Centre | 509 | 100.00% | 588 | 100.00% | 756 | 77.30% | 704 | 80.55% |
| Box Hill Hospital | 315 | 100.00% | 307 | 100.00% | 545 | 79.56% | 639 | 84.30% |
| Dandenong Hospital | 316 | 100.00% | 319 | 100.00% | 221 | 68.85% | 174 | 68.24% |
| Frankston Hospital | 332 | 99.40% | 356 | 100.00% | 376 | 62.15% | 326 | 54.06% |
| Maroondah Hospital | 142 | 100.00% | 145 | 100.00% | 230 | 77.44% | 258 | 82.69% |
| Monash Medical Centre | 627 | 100.00% | 701 | 100.00% | 672 | 76.80% | 620 | 73.72% |
| Royal Melbourne Hospital | 616 | 100.00% | 696 | 99.86% | 455 | 74.59% | 514 | 73.53% |
| St Vincent's Hospital | 301 | 100.00% | 308 | 100.00% | 673 | 70.40% | 622 | 75.85% |
| Sunshine Hospital | 60 | 100.00% | 79 | 100.00% | 234 | 90.00% | 295 | 92.48% |
| The Alfred | 663 | 100.00% | 646 | 99.69% | 531 | 61.67% | 334 | 56.71% |
| The Northern Hospital | 210 | 100.00% | 221 | 100.00% | 520 | 74.71% | 486 | 69.33% |
| Western Hospital | 264 | 100.00% | 224 | 100.00% | 397 | 76.35% | 478 | 73.88% |
| Other metropolitan hospitals | | | | | | | | |
| Royal Children's Hospital | 338 | 100.00% | 348 | 100.00% | 499 | 100.00% | 465 | 100.00% |
| Royal Women's Hospital | 166 | 100.00% | 174 | 100.00% | 408 | 99.76% | 436 | 100.00% |
| Sandringham & District Memorial Hospital | 83 | 100.00% | 66 | 100.00% | 294 | 91.59% | 331 | 93.50% |
| The Royal Victorian Eye and Ear Hospital | 128 | 100.00% | 156 | 100.00% | 1,413 | 79.12% | 1,476 | 84.63% |

¹ December quarter 2000 and September quarter 2001 data have been amended from the previous reports.

² December quarter 2001 data are provisional.

³ Major metropolitan hospitals contain the campuses listed in the Introduction.

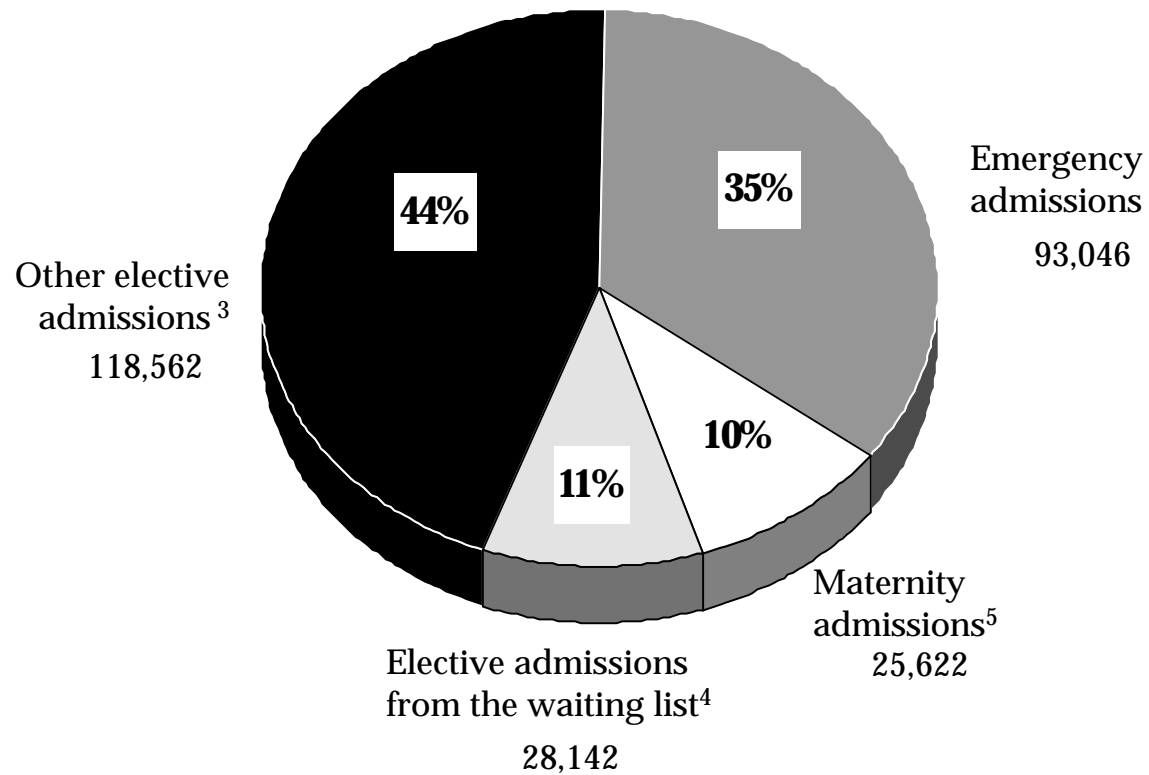
Table 5.4 Percentage of people from elective surgery waiting lists who were admitted within the ideal time, by Urgency, by Individual Hospital (continued)

| Hospital | Urgent cases admitted within 30 days during the quarter | | | | Semi-urgent cases admitted within 90 days during the quarter | | | |
|-----------------------------------|---|---------------|---------------|---------------|--|---------------|---------------|---------------|
| | September 2001 | | December 2001 | | September 2001 | | December 2001 | |
| | Number | Percentage | Number | Percentage | Number | Percentage | Number | Percentage |
| Major regional hospitals | | | | | | | | |
| Ballarat Health Services | 16 | 100.00% | 25 | 100.00% | 315 | 80.56% | 294 | 84.97% |
| Barwon Health | 66 | 100.00% | 64 | 100.00% | 411 | 77.55% | 457 | 80.60% |
| Bendigo Health Care Group | 145 | 100.00% | 145 | 100.00% | 153 | 60.47% | 217 | 63.82% |
| Goulburn Valley Health | 153 | 100.00% | 145 | 100.00% | 302 | 95.87% | 255 | 98.46% |
| Latrobe Regional Hospital | 141 | 100.00% | 114 | 100.00% | 307 | 97.15% | 358 | 99.17% |
| Other rural hospitals | | | | | | | | |
| Wangaratta District Base Hospital | 65 | 100.00% | 51 | 100.00% | 200 | 95.69% | 188 | 94.00% |
| West Gippsland Hospital | 108 | 99.08% | 110 | 100.00% | 183 | 91.96% | 193 | 85.02% |
| Total | 5,858 | 99.95% | 6,071 | 99.95% | 10,445 | 78.88% | 10,432 | 80.07% |

Source: Elective Surgery Information System.

What is the admission source of total hospital activity?

Figure 5.3 Separations by admission type: December quarter 2001 ^{1 2}



¹ Percentages may not add due to rounding.

² December quarter 2001 data are provisional.

³ Includes statistical admissions, which refer to a change in patient care type.

⁴ Patients admitted from the elective surgery waiting list during the quarter (ESIS).

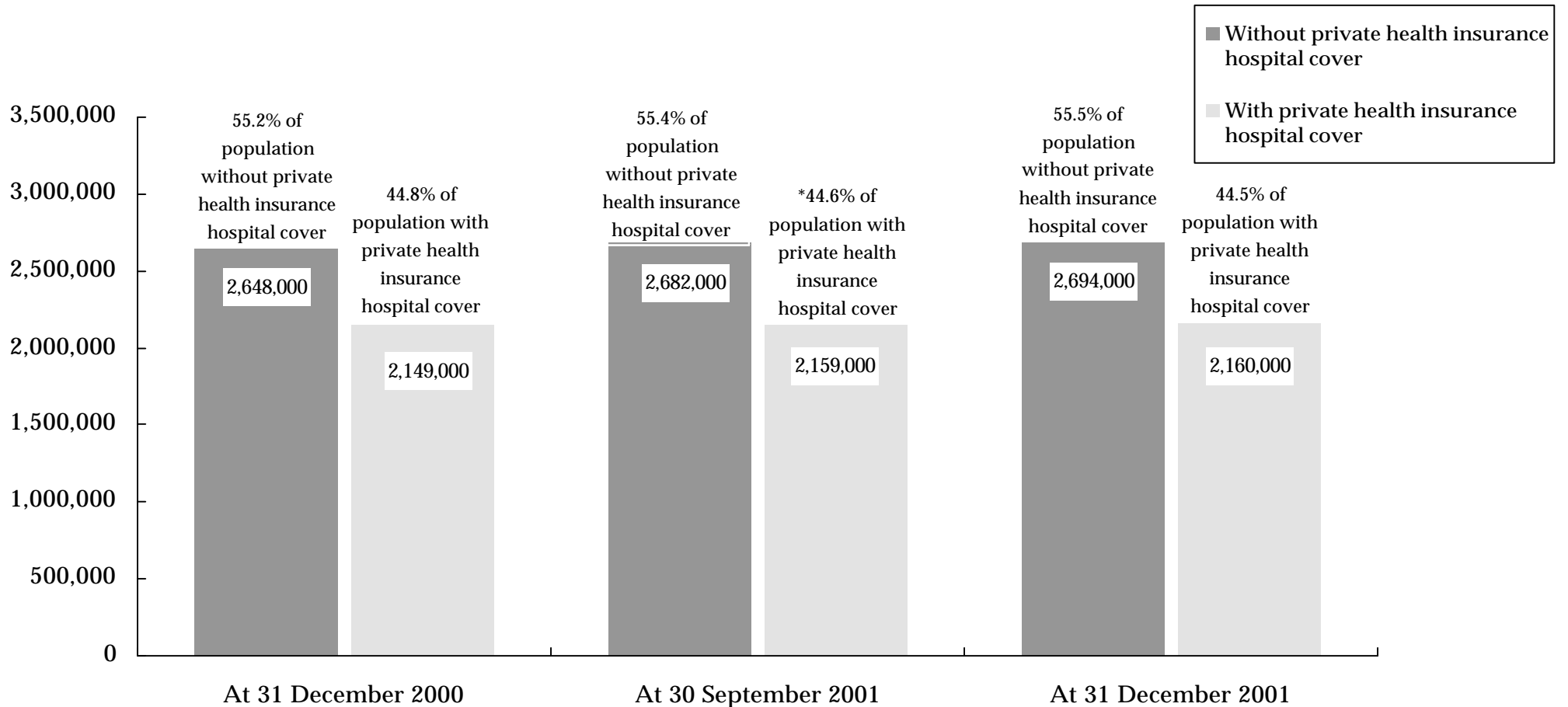
⁵ Includes maternity and newborn admissions.

Source: Victorian Admitted Episode Dataset (17 February 2002 update).
Elective Surgery Information System.

6. Private Health Insurance

How many Victorians have private health insurance hospital cover?

Figure 6.1 Health insurance status of Victorians ^{1 2 3}



¹ Data are for all people covered by insurance, that is, contributors, partners and dependants.

² Data for current and previous quarters are provisional.

³ Statistics reflect total persons covered by any level of hospital private health insurance.

* Data at 30 September 2001 have been amended from the previous quarter by Private Health Insurance Administration Council.

Source: Private Health Insurance Administration Council (20 February 2002).

7. Glossary

What do the terms used in this report mean?

Admitted Patient

Someone who is an inpatient in a hospital. Sameday patients who are admitted for less than 24 hours are also counted as inpatients but people who attend hospital for outpatient clinics are not.

Cancellation

The request for elective surgery has been withdrawn and the patient is removed from this hospital's Waiting List without admission for the awaited procedure. This can occur for clinical reasons, transfer of the patient to another hospital, or at the request of the patient.

Casemix Funded

A system of funding hospitals according to the actual number and type of services that they provide. Casemix funding was introduced for most Victorian public hospitals in July 1993.

Coronary Care

A hospital unit with specialised staff and equipment to care for patients with heart disease.

Elective Admission

A planned admission to hospital. Emergency admissions and transfers from other hospitals are not counted as elective admissions.

Elective Surgery

Planned surgery that is not an emergency requiring hospital admission within 24 hours.

Emergency Admission

An unplanned admission to hospital due to unexpected illness or injury that requires urgent care.

Emergency Department

A hospital department that specialises in providing emergency care for people who are in need of urgent care (ambulance cases for example) and people who choose to seek treatment in an emergency department.

Intensive Care

A hospital unit with specialised staff and equipment to provide continuous care for critically ill, injured or post-operative patients.

Non Sameday Patient

In the context of this report, a non sameday patient is an inpatient who leaves hospital on a later date than when they were admitted.

Separation

When an inpatient leaves a hospital. This is the technical way of counting the number of inpatients treated by a hospital.

Step Down Bed

Hospital beds with specialised staff and equipment to care for patients who no longer need coronary or intensive care but are not yet ready to move to a general hospital ward.

Transfer

When an inpatient is moved from one hospital to another. This might be in order to obtain a specialised treatment not available at the first hospital or because of the patient's preferences.

Waiting List Hospital

A major public hospital that performs elective surgery for public patients and uses a waiting list to properly keep track of people who require elective surgery.