

Hospital Services Report

September Quarter 1999

Notes

This document contains the most up-to-date information available at the time of preparation.

This *Hospital Services Report* is available on the Department of Human Services Internet site located at:

<http://www.dhs.vic.gov.au/ahs/pub.htm>

Design and production by Department of Human Services, Melbourne, Victoria.

September 1999

© Copyright Department of Human Services 1999.

This publication is copyright. No part may be reproduced by any process except in accordance with the provisions of the *Copyright Act 1968*.

Contents

<i>Introduction</i>	1
1. Private Health Insurance - September Quarter 1999	2
2. Hospital Admitted Patient Activity - September Quarter 1999	3
3. Access to Emergency Services - September Quarter 1999	6
4. Access to Critical Care Services - September Quarter 1999	14
5. Access to Elective Surgery - September Quarter 1999	15
6 Glossary	29

Introduction

Consumers, health care providers and government all need information on the quality of health services. Public access to information assists consumers to understand the health care system, it assists providers of health services in planning and increases the accountability of the Department of Human Services to the people in the state of Victoria, Australia.

The *Hospital Services Report* was introduced in 1995. This edition includes data for the September Quarter 1999, which covers the months of July, August and September.

The information included in this report is often requested from the Department. Since technical information of this nature is very difficult to interpret, each graph and table needs to be carefully considered in the context of the complexity of the health care system. Department staff, hospital staff, general practitioners and other health care professionals may be able to assist you to interpret this report.

Changes in Reporting on the Access to Elective Surgery

On the 1 July 1999, a revised version of the Elective Surgery Information System (ESIS) was implemented. One of its objectives was to collect data in accordance with agreed national definitions. This change will affect the way in which waiting times are calculated and the number of people counted as waiting for elective surgery on the waiting list. Both will affect comparability with previous data series.

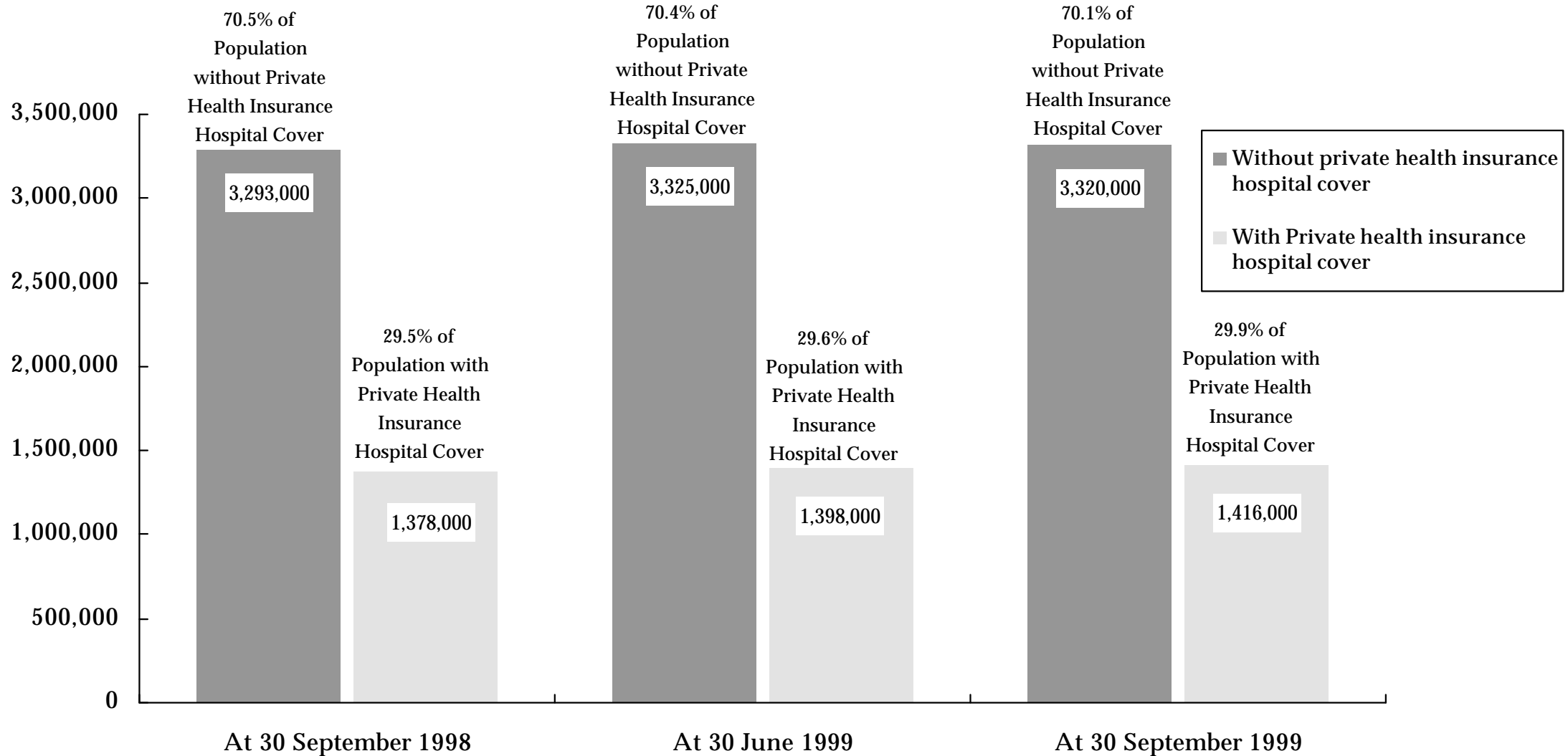
The total waiting list numbers will now include booking list numbers as well as the previously defined waiting list numbers. Using the data in ESIS, the national waiting list definition can be calculated. Consequently, the tables and figures (5.1, 5.2 and 5.4) with total waiting list numbers have been revised from 1 July 1998. Thus waiting list numbers in this and future issues of the Hospital Services Report are different from previous issues. The June Quarter 1999 is the final issue in which the former waiting list definition is used. The effect of the change in definition is shown in Figure 5.5, *How does the waiting list compare to the total number of patients treated?*. Here the number of people waiting under the previous definition of total waiting list is displayed, as well as the number under the new definition.

The information about urgent and semi-urgent waiting times has been expanded. In addition to Table 5.3, *How many people are on hospital waiting lists for longer than the ideal time?*, a new table (Table 5.4), *What percentage of patients are admitted within clinical ideal times?* has been added.

1. Private Health Insurance

How many Victorians have private health insurance hospital cover?

Figure 1.1 Health Insurance Status of Victorians ^{1 2 3}



¹ Data are for all people covered by insurance, that is, contributors, partners and dependants.

² Data for current and previous quarters are provisional.

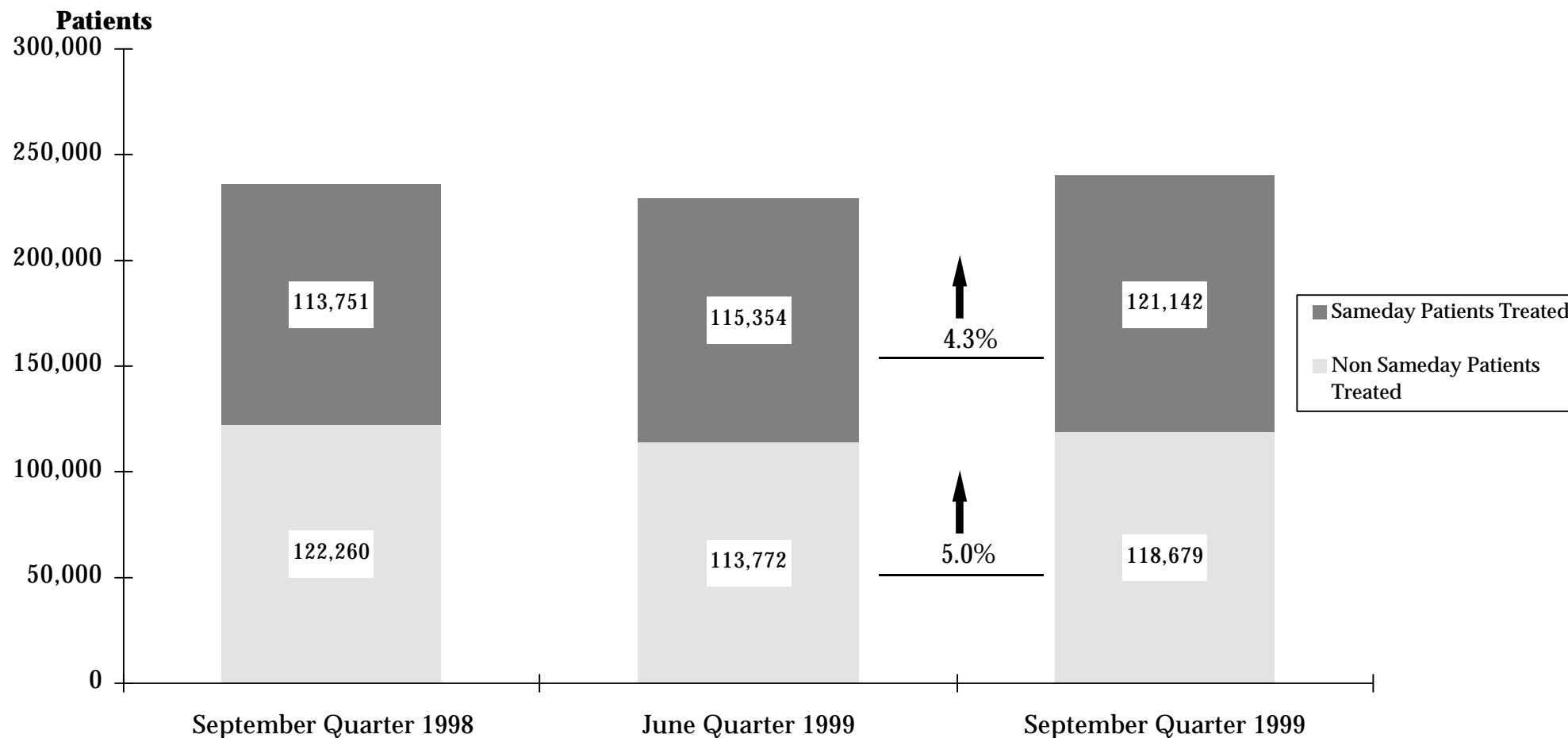
³ Statistics reflect total persons covered by any level of hospital private health insurance.

Source: Private Health Insurance Administration Council.

2. Hospital Admitted Patient Activity

How many patients are admitted to hospital?

Figure 2.1 Admitted Patients in Public Hospitals ^{1 2 3}



¹ Data are for casemix-funded acute public hospital patients. The data refer to the number of “separations” (ie. the number of patients that have been discharged from hospital).

² The data are provisional.

³ “Sameday” patients are admitted and discharged on the same day.

How many patients are admitted to hospital?

Table 2.1 Admitted Patients by Individual Hospital ^{1 2 3}

Hospital	September Quarter 1998		June Quarter 1999		September Quarter 1999		Change (%) June 1999 to September 1999		
	Non Sameday Only	All	Non Sameday Only	All	Non Sameday Only	All	Non Sameday Only	All	
North Western Health Care Network									
Royal Melbourne Hospital	6,067	14,942	5,646	13,869	5,647	14,431	0.0%	4.1%	
Western Hospital	4,918	8,624	4,612	8,444	4,707	8,523	2.1%	0.9%	
The Northern Hospital	3,536	5,773	3,374	5,440	3,604	5,985	6.8%	10.0%	
Other North Western Health Care Network Hospitals	3,276	6,922	3,086	7,651	3,188	8,008	3.3%	4.7%	
Inner and Eastern Health Care Network									
The Alfred	4,850	11,516	4,400	10,981	4,648	11,526	5.6%	5.0%	
The Angliss Health Services	2,621	4,277	2,403	4,724	2,564	5,012	6.7%	6.1%	
Box Hill Hospital	4,437	7,975	4,304	8,005	4,598	8,486	6.8%	6.0%	
Caulfield General Medical Centre	923	2,327	512	1,581	533	1,604	4.1%	1.5%	
Maroondah Hospital	1,946	3,719	1,970	3,419	1,799	3,274	-8.7%	-4.2%	
Peter MacCallum Cancer Institute	1,290	2,920	1,264	2,982	1,296	2,921	2.5%	-2.0%	
The Royal Victorian Eye and Ear Hospital	1,730	3,231	1,376	3,132	1,487	3,078	8.1%	-1.7%	
Other Inner and Eastern Health Care Network Hospitals ⁴	581	1,188	183	398	162	396	-11.5%	-0.5%	
Southern Health Care Network									
Dandenong Hospital	4,590	6,777	4,426	6,651	4,455	6,474	0.7%	-2.7%	
Monash Medical Centre, Clayton	6,370	11,649	6,085	11,311	6,755	12,344	11.0%	9.1%	
Sandringham & District Memorial Hospital	1,204	2,205	1,388	2,970	1,421	3,069	2.4%	3.3%	
Other Southern Health Care Network Hospitals	1,643	6,091	1,344	5,809	1,454	5,963	8.2%	2.7%	
Peninsula Health Care Network									
Frankston Hospital	4,426	8,876	4,249	8,833	4,256	9,155	0.2%	3.6%	
Other Peninsula Health Care Network Hospitals	819	1,154	713	1,032	822	1,145	15.3%	10.9%	

¹ Data relate to acute patients at casemix-funded public hospitals and refer to the number of 'separations' (ie. the number of patients that have been discharged from hospital).

² 1999/2000 data are provisional.

³ Non Sameday patients remain in hospital overnight or longer.

⁴ St George's Health Service, included under this category, ceased to treat acute patients from 1 January 1999.

Table 2.1 Admitted Patients by Individual Hospital (continued)

Hospital	September Quarter 1998		June Quarter 1999		September Quarter 1999		Change (%) June 1999 to September 1999		
	Non Sameday Only	All	Non Sameday Only	All	Non Sameday Only	All	Non Sameday Only	All	
Women's and Children's Health Care Network									
Royal Children's Hospital	4,989	8,112	4,353	7,379	4,814	7,971	10.6%	8.0%	
Royal Women's Hospital	3,088	7,102	2,932	7,053	2,812	6,970	-4.1%	-1.2%	
Other Metropolitan Hospitals									
Austin & Repatriation Medical Centre	6,531	16,739	5,639	15,634	5,525	16,159	-2.0%	3.4%	
Mercy Hospital for Women	2,301	3,990	2,224	3,364	2,250	3,583	1.2%	6.5%	
Royal Talbot Rehabilitation Centre	212	213	173	175	161	161	-6.9%	-8.0%	
St Vincent's Hospital	4,033	9,528	4,012	9,593	4,267	10,009	6.4%	4.3%	
Other Metropolitan Non-network Hospitals	1,799	3,992	1,869	4,204	1,825	4,413	-2.4%	5.0%	
Non Metropolitan Hospitals									
Ballarat Health Services	3,164	5,766	2,915	5,578	3,071	5,780	5.4%	3.6%	
Barwon Health	5,156	9,543	5,157	9,811	5,388	10,359	4.5%	5.6%	
Bendigo Health Care Group	2,900	5,037	2,746	4,833	2,891	5,058	5.3%	4.7%	
Central Wellington Health Services	1,164	2,148	992	1,721	1,208	2,074	21.8%	20.5%	
Goulburn Valley Health	2,493	4,112	2,265	3,823	2,461	4,174	8.7%	9.2%	
Latrobe Regional Hospital ⁵	1,383	2,703	-	-	-	-	-	-	
New Latrobe Regional Hospital ⁶	712	1,559	2,276	5,333	2,324	5,503	2.1%	3.2%	
Wangaratta District Base Hospital	1,741	2,704	1,512	2,509	1,729	2,804	14.4%	11.8%	
South West Healthcare	1,917	3,201	1,780	3,117	1,936	3,300	8.8%	5.9%	
Wimmera Health Care Group	1,050	1,726	983	1,672	1,031	1,918	4.9%	14.7%	
Wodonga Regional Health Service	1,613	3,332	1,575	3,402	1,683	3,677	6.9%	8.1%	
Other Non Metropolitan Hospitals	20,787	34,338	19,034	32,693	19,907	34,514	4.6%	5.6%	
Total All Public Hospitals	122,260	236,011	113,772	229,126	118,679	239,821	4.3%	4.7%	

⁶ The Latrobe Regional Hospital closed on 1 September 1998.

⁷ The New Latrobe Regional Hospital opened on 1 September 1998.

Source: Victorian Admitted Episode Dataset (21 February 2000 update).

3. Access to Emergency Services

How many patients are treated in emergency departments?

Table 3.1: Patients Treated in Selected Public Hospital Emergency Departments^{1 2}

	September Quarter 1998	June Quarter 1999	September Quarter 1999	% Change June 1999 to September 1999
Patients Treated	156,920	152,984	159,169	4.04%

¹ Data only for hospitals participating in the Emergency Services Enhancement Program / Hospital Access Program. A complete list of these hospitals is given in Table 3.2.

² September quarter 1999 data are provisional.

Source: Victorian Emergency Minimum Dataset.

How many patients are treated in each hospital emergency department?

Table 3.2 Patients Treated in Hospital Emergency Departments, by Individual Hospitals ^{1 2}

Hospital	September Quarter 1998	June Quarter 1999	September Quarter 1999	% Change June 1999 to September 1999
North Western Health Care Network				
Northern Hospital	8,737	9,186	9,760	6.2%
Royal Melbourne Hospital	10,517	10,416	10,986	5.5%
Western Hospital	9,164	9,022	8,873	-1.7%
Inner and Eastern Health Care Network				
The Alfred	9,962	9,000	8,881	-1.3%
The Angliss Health Services	7,586	6,814	7,246	6.3%
Box Hill Hospital	10,339	8,091	8,223	1.6%
Maroondah Hospital	6,991	7,004	6,970	-0.5%
Southern Health Care Network				
Dandenong Hospital	7,884	9,849	10,029	1.8%
Monash Medical Centre	12,572	12,214	13,028	6.7%
Peninsula Health Care Network				
Frankston Hospital	7,641	8,047	8,436	4.8%

¹ Data only for hospitals participating in the Emergency Services Enhancement Program / Hospital Access Program.

² Data include all emergency department patients, that is, they include patients who are subsequently admitted to hospital and patients who are treated in the emergency department without being admitted to hospital.

Table 3.2 Patients Treated in Hospital Emergency Departments, by Individual Hospitals (cont'd)

Hospital	September Quarter 1998	June Quarter 1999	September Quarter 1999	% Change June 1999 to September 1999
Women's and Children's Health Care Network				
Royal Children's Hospital	15,260	12,637	14,910	18.0%
Metropolitan Non-Network Hospitals				
Austin and Repatriation Medical Centre	8,890	8,527	8,253	-3.2%
St Vincent's Hospital	6,289	6,469	6,489	0.3%
Non Metropolitan Hospitals				
Ballarat Health Services ³	7,093	6,951	7,093	2.0%
Barwon Health	7,641	8,969	9,177	2.3%
Bendigo Health Care Group	8,066	7,860	8,348	6.2%
Goulburn Valley Health	5,553	5,450	5,623	3.2%
New Latrobe Regional Hospital ⁴	6,735	6,478	6,844	5.6%
Total	156,920	152,984	159,169	4.0%

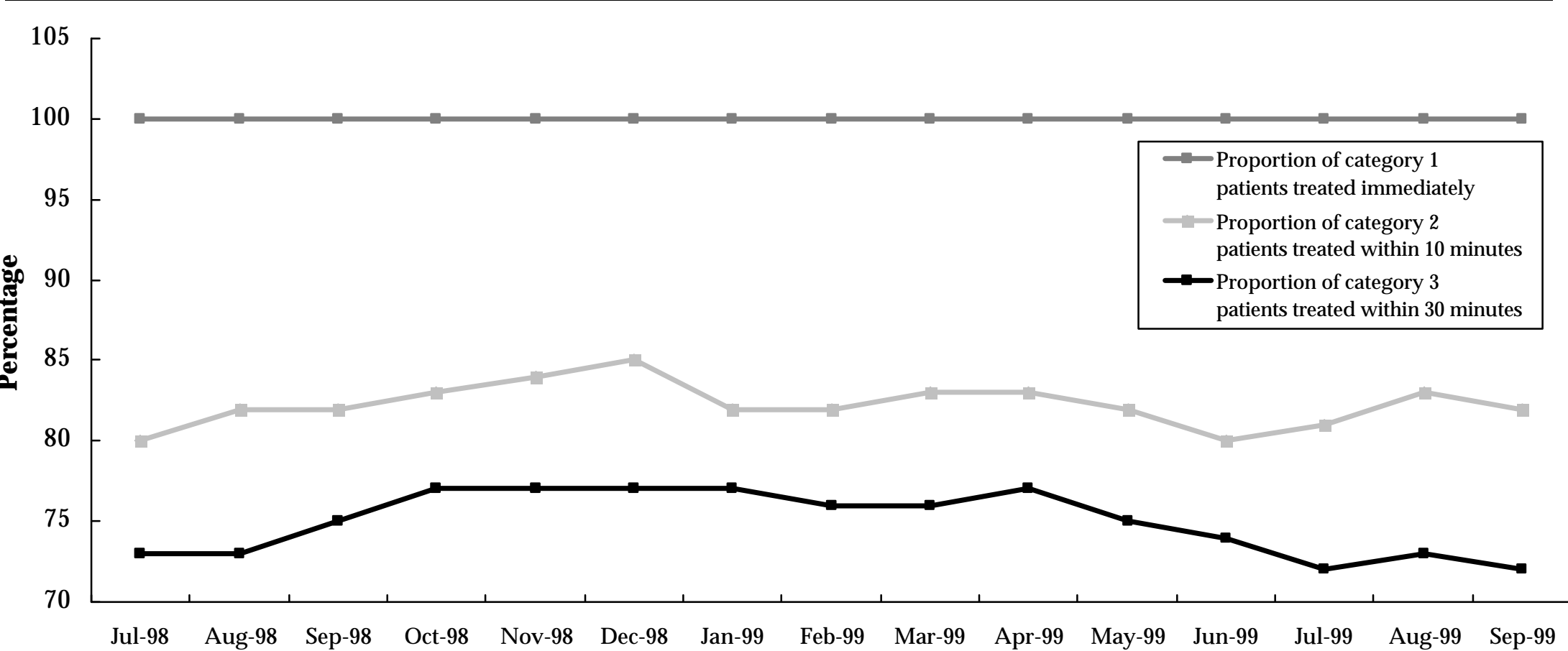
³ September quarter 1999 data for Ballarat Health Services are provisional.

⁴ The Latrobe Regional Hospital closed and the New Latrobe Regional Hospital opened on 1 September 1998.

Source: Victorian Emergency Minimum Dataset.

How many emergency department patients are treated within ideal time?

Figure 3.1 Emergency Department Achievement of ACEM Waiting Times by Triage Category^{1 2 3}



¹ Waiting times are calculated as the time between presentation at the emergency department and commencement of treatment. The following Australasian College for Emergency Medicine (ACEM) patient categories and recommended treatment times are used:
 Category 1: Resuscitation case requiring immediate treatment, for example, major trauma, cardiac arrest, unconsciousness, shock.
 Category 2: Emergency case requiring treatment within 10 minutes, for example, severe trauma, chest pain, severe pain, severe breathing difficulty.
 Category 3: Urgent case requiring treatment within 30 minutes, for example, moderate trauma, infection, breathing difficulty.

² Data only for hospitals participating in the Emergency Services Enhancement Program / Hospital Access Program.

³ September quarter 1999 data are provisional.

How many emergency department patients are treated within ideal time?

Table 3.3 Patients treated in selected public hospital emergency departments in triage category 1, 2 or 3 by whether treated in ACEM recommended waiting time: September quarter 1999^{1 2}

Hospital	Triage Category 1		Triage Category 2		Triage Category 3	
	Total patients	Treated immediately	Total patients	Treated in 10 minutes	Total patients	Treated in 30 minutes
North Western Health Care Network						
Northern Hospital	60	100%	246	89%	2,331	77%
Royal Melbourne Hospital	200	100%	1,286	82%	3,595	83%
Western Hospital	143	100%	726	85%	2,882	78%
Inner and Eastern Health Care Network						
The Alfred ³	n.y.a.	n.y.a.	n.y.a.	n.y.a.	n.y.a.	n.y.a.
The Angliss Health Services	15	100%	420	79%	1,504	82%
Box Hill Hospital	104	100%	468	84%	3,091	70%
Maroondah Hospital	35	100%	248	81%	1,599	75%
Southern Health Care Network						
Dandenong Hospital	206	100%	1,012	80%	4,184	69%
Monash Medical Centre	227	100%	1,379	78%	4,642	70%
Peninsula Health Care Network						
Frankston Hospital	78	100%	513	87%	3,934	55%

¹ Data only for hospitals participating in the Hospital Access Program.

² Australasian College for Emergency Medicine (ACEM).

³ September quarter 1999 data for The Alfred are unavailable and therefore totals are subject to amendment.

Table 3.3 Patients treated in selected public hospital emergency departments in triage category 1, 2 or 3 by whether treated in ACEM recommended waiting time: September quarter 1999 ^{1 2}

Hospital	Triage Category 1		Triage Category 2		Triage Category 3	
	Total patients	Treated immediately	Total patients	Treated in 10 minutes	Total patients	Treated in 30 minutes
Women's and Children's Health Care Network						
Royal Children's Hospital	39	100%	223	92%	3,321	78%
Metropolitan Non-Network Hospitals						
Austin and Repatriation Medical Centre	127	100%	697	74%	2,869	59%
St Vincent's Hospital	138	100%	464	72%	2,114	71%
Non Metropolitan Hospitals						
Ballarat Health Services ⁴	n.y.a.	n.y.a.	n.y.a.	n.y.a.	n.y.a.	n.y.a.
Barwon Health ⁵	n.y.a.	n.y.a.	642	85%	3,075	72%
Bendigo Health Care Group	22	100%	202	83%	1,521	75%
Goulburn Valley Health	33	100%	367	100%	1,726	88%
New Latrobe Regional Hospital	65	100%	399	87%	1,116	81%
Total	1,492	100%	9,292	82%	43,504	72%

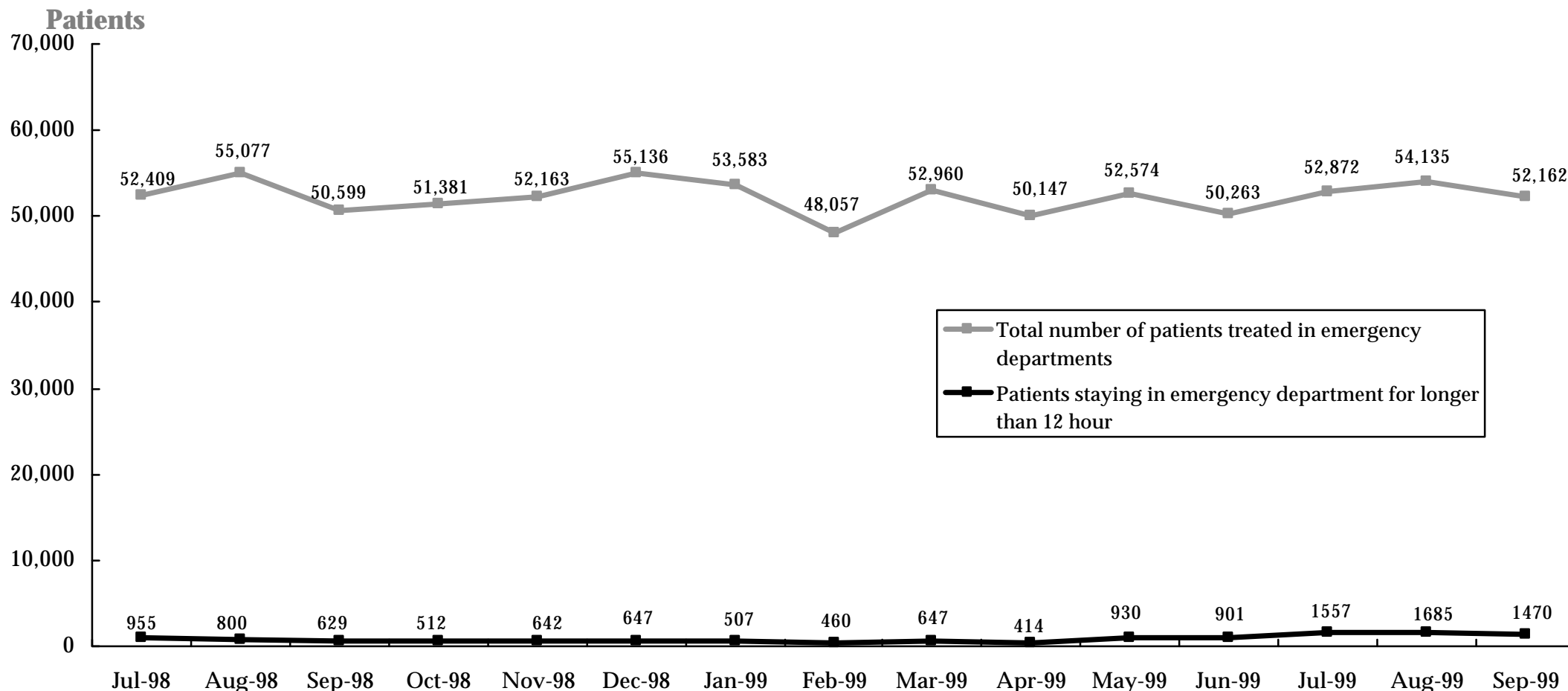
⁴ September quarter 1999 data for Ballarat Health Services are unavailable and therefore totals are subject to change.

⁵ September quarter 1999 data for Barwon Health is incomplete and therefore totals are subject to change. Barwon Health is formerly known as The Geelong Hospital.

Source: Victorian Emergency Minimum Dataset.

How many patients stay for an extended period in the emergency department?

Figure 3.2 Patients Staying in Emergency Departments for Over 12 Hours While Waiting for a Hospital Bed ^{1 2 3 4}



¹ The period of 'stay' is calculated from the time the patient arrives in the emergency department to the time when the patient leaves the emergency department.

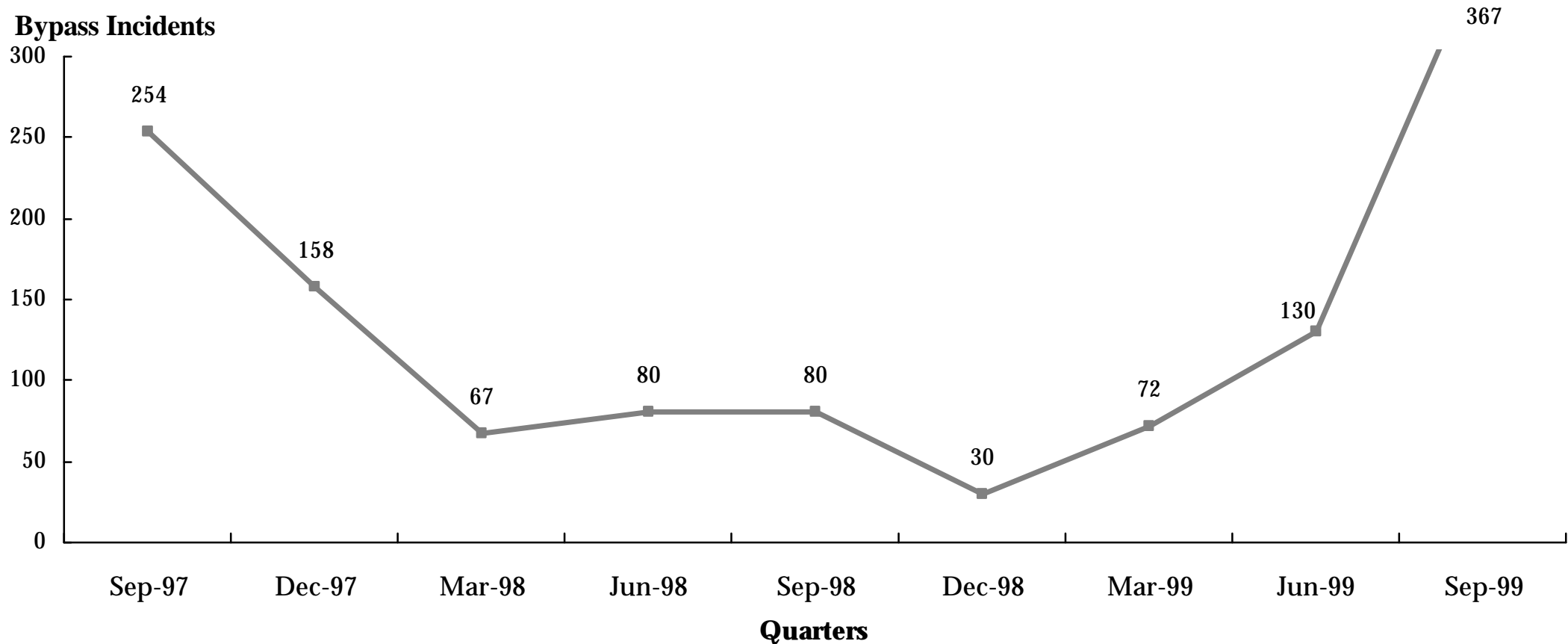
² Data only for hospitals participating in the Emergency Services Enhancement Program / Hospital Access Program.

³ Patients treated in DHS sponsored Chest Pain Evaluation Area Pilots are excluded from these figures.

⁴ September quarter 1999 data are provisional.

How often are hospital emergency departments too busy, and consequently go on 'bypass'?

Figure 3.3 Periods of Ambulance Bypass of Public Hospitals ^{1 2 3}



¹ Hospital emergency departments are bypassed by ambulances when the emergency department has reached maximum capacity and the treatment of patients already in the emergency department could be significantly compromised by the ambulance arrival of an additional patient requiring emergency treatment. Each individual period of ambulance bypass is for two hours or less.

² Data only for hospitals participating in the Emergency Services Enhancement Program / Hospital Access Program.

³ Metropolitan Ambulance Service (MAS) response times are now being reported in MAS Response Report: A Quarterly Statistical Review of MAS, Melbourne. Copies of the Response Report can be obtained from MAS, Corporate Planning and Corporate Communications Unit, phone (03) 9840 3648.

4. Access to Critical Care Services

How many hospital beds are available for patients who need intensive care?

Table 4.1 Average Number of Public Hospital Intensive Care Beds (Excluding Step-down Beds) Available and Open at 9.00a.m., by Month¹

	Jul-98	Aug-98	Sep-98	Oct-98	Nov-98	Dec-98	Jan-99	Feb-99	Mar-99	Apr-99	May-99	Jun-99	Jul-99	Aug-99	Sep-99
Available ²	2.4	5.3	9.2	7.3	2.6	6.2	11.8	9.8	6.0	4.2	4.0	4.2	3.5	2.0	2.0
Total Open ³	91.7	91.8	90.4	90.6	93.9	93.5	88.9	92.0	94.0	92.4	92.0	94.0	94.0	95.0	90.0

¹ Based upon hospital census taken at 9.00a.m. daily.

² Available beds are unoccupied beds which are staffed, functional and available to receive new patients.

³ Total open beds are all functioning and staffed beds, regardless of whether they are occupied.

Source: Office of the Coordinator of Emergency and Critical Care Services.

How many hospital beds are available for patients who need coronary care?

Table 4.2 Average Number of Public Hospital Coronary Care Beds (Excluding Step-down Beds) Available and Open at 9.00a.m., by Month¹

	Jul-98	Aug-98	Sep-98	Oct-98	Nov-98	Dec-98	Jan-99	Feb-99	Mar-99	Apr-99	May-99	Jun-99	Jul-99	Aug-99	Sep-99
Available	9.9	10.4	8.6	9.8	8.4	8.2	10.4	9.5	7.5	7.3	5.8	6.0	8.0	5.0	7.0
Total Open	75.3	75.4	73.4	74.0	73.3	72.3	73.5	74.0	73.0	72.0	74.0	72.0	73.0	73.0	72.0

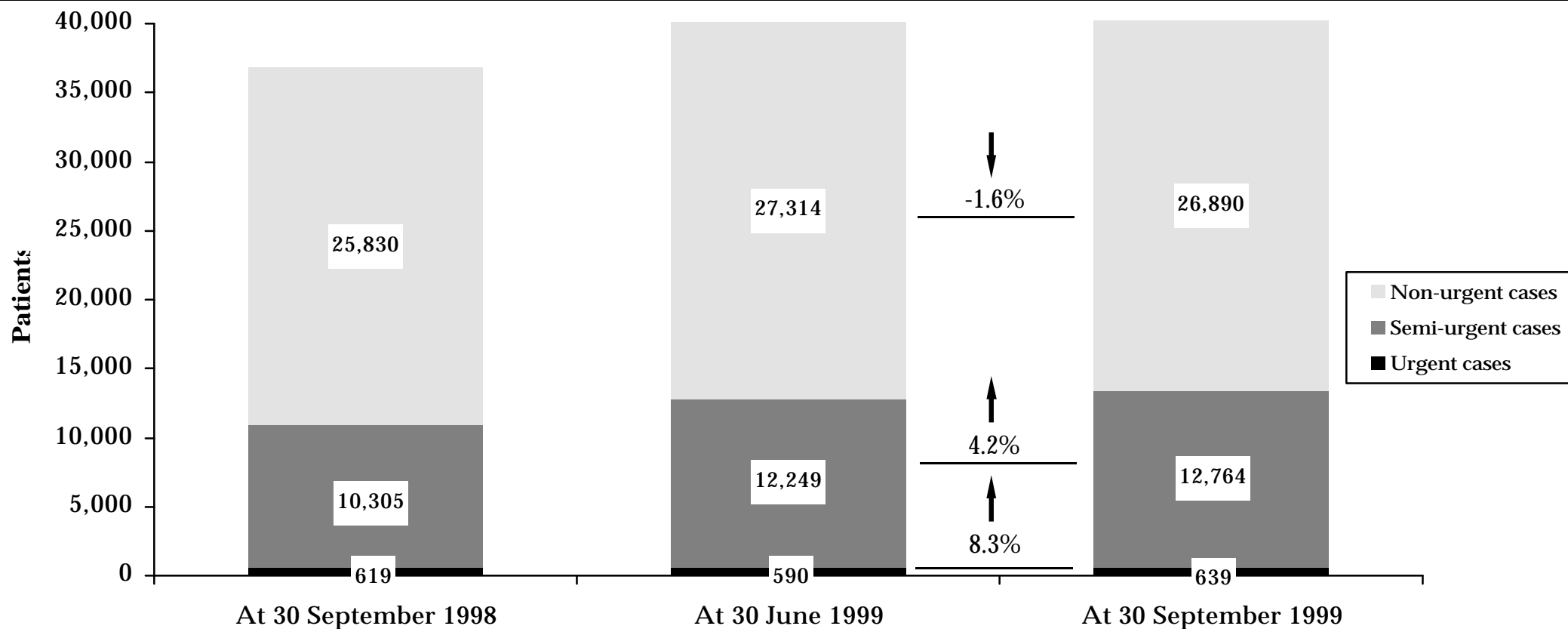
¹ Notes under Table 5.1 apply.

Source: Office of the Coordinator of Emergency and Critical Care Services.

5. Access To Elective Surgery

How many people are on hospital waiting lists for elective surgery?

Figure 5.1 Waiting List by Urgency^{1 2 3 4}



¹ From the 1 July 1999, Victoria has adopted the national definition for waiting list numbers. The new definition counts all patients on either the former booking or waiting lists. The time series information has been revised to reflect the new definition. Thus waiting list numbers in this issue of the HSR are different from previous issues (see page 1).

² The waiting list patient categories are:

- Urgent cases (waiting list category 1): Admission within 30 days desirable for a condition that has the potential to deteriorate quickly to the point that it may become an emergency.
- Semi-urgent cases (waiting list category 2): Admission within 90 days desirable for a condition causing some pain, dysfunction or disability but which is not likely to deteriorate quickly or become an emergency.
- Non-urgent cases (waiting list category 3): Admission at some time in the future acceptable for a condition causing minimal or no pain, dysfunction or disability which is very unlikely to deteriorate quickly and which does not have the potential to become an emergency.

³ The data involved may be small. Small absolute change may have a large impact on the percentage change.

⁴ September quarter 1999 data are provisional.

How many people are on hospital waiting lists for elective surgery?

Table 5.1 Waiting Lists by Urgency, by Individual Hospital ^{1 2}

Hospital	Urgent cases			Semi-urgent cases				Non-urgent cases			
	30 Sep 1998	30 Jun 1999	30 Sep 1999	30 Sep 1998	30 Jun 1999	30 Sep 1999	% Change Jun 1999 to Sep 1999	30 Sep 1998	30 Jun 1999	30 Sep 1999	% Change Jun 1999 to Sep 1999
North Western Health Care Network											
Northern Hospital	40	24	29	440	735	753	2%	1,846	1,986	2,013	1.4%
Royal Melbourne Hospital	80	39	53	697	883	836	-5%	1,721	2,248	2,299	2.3%
Western Hospital ³	30	27	31	290	570	645	13%	1,928	1,576	1,662	5.5%
Sunshine Hospital ³	-	3	1	-	48	87	81%	-	346	411	18.8%
Inner and Eastern Health Care Network											
The Alfred	57	59	73	613	1,140	1,228	8%	1,127	1,529	1,629	6.5%
The Angliss Health Services	10	8	19	117	240	247	3%	361	389	407	4.6%
Box Hill Hospital	31	21	13	481	486	435	-10%	656	617	636	3.1%
Maroondah Hospital	12	22	15	187	190	184	-3%	1,401	1,392	1,363	-2.1%
The Royal Victorian Eye and Ear Hospital	-	-	1	1,861	2,383	2,588	9%	8	30	26	-13.3%
Southern Health Care Network											
Dandenong Hospital	25	23	25	165	184	238	29%	1,278	1,303	1,377	5.7%
Monash Medical Centre	54	53	93	722	527	580	10%	2,982	2,775	2,661	-4.1%
Sandringham & District Memorial Hospital	3	13	12	47	87	93	7%	691	747	707	-5.4%
Peninsula Health Care Network											
Frankston Hospital	51	55	47	703	701	881	26%	2,042	2,143	2,166	1.1%

¹ From the 1 July 1999, Victoria has adopted the national definition for waiting list numbers. The new definition counts all patients on either the former booking or waiting lists.

The time series information has been revised to reflect the new definition. Thus waiting list numbers in this issue of the HSR are different from previous issues.

² The data involved may be small. Small absolute change may have a large impact on the percentage change.

³ Western Hospital and Sunshine Hospital disaggregated on 4 May 1998 and commenced reporting separately to ESIS from 31 January 1999.

Table 5.1 Waiting Lists by Urgency, by Individual Hospital (continued)

Hospital	Urgent cases			Semi-urgent cases				Non-urgent cases			
	30 Sep 1998	30 Jun 1999	30 Sep 1999	30 Sep 1998	30 Jun 1999	30 Sep 1999	% Change Jun 1999 to Sep 1999 to	30 Sep 1998	30 Jun 1999	30 Sep 1999	% Change Jun 1999 to Sep 1999
Women's and Children's Health Care Network											
Royal Children's Hospital	20	33	20	252	94	164	74%	1,412	1,186	1,106	-6.7%
Royal Women's Hospital	34	31	22	348	233	325	39%	549	740	586	-20.8%
Metropolitan Non-Network Hospitals											
Austin and Repatriation Medical Centre	46	54	38	761	945	966	2%	1,166	1,322	1,404	6.2%
St Vincent's Hospital	48	43	54	709	1,054	847	-20%	904	1,116	1,017	-8.9%
Non Metropolitan Hospitals											
Ballarat Health Services	5	4	3	547	455	366	-20%	1,532	1,692	1,522	-10.0%
Barwon Health ⁴	24	13	12	619	427	407	-5%	1,834	1,753	1,647	-6.0%
Bendigo Health Care Group	8	17	16	150	207	211	2%	847	997	893	-10.4%
Goulburn Valley Health	15	10	20	219	161	147	-9%	502	432	454	5.1%
New Latrobe Regional Hospital ⁵	10	16	14	213	115	111	-3%	526	583	552	-5.3%
Wangaratta District Base Hospital	1	-	-	90	312	324	4%	236	133	92	-30.8%
West Gippsland Hospital	15	22	28	74	72	101	40%	281	279	260	-6.8%
Total⁴	619	590	639	10,305	12,249	12,764	4%	25,830	27,314	26,890	-1.6%

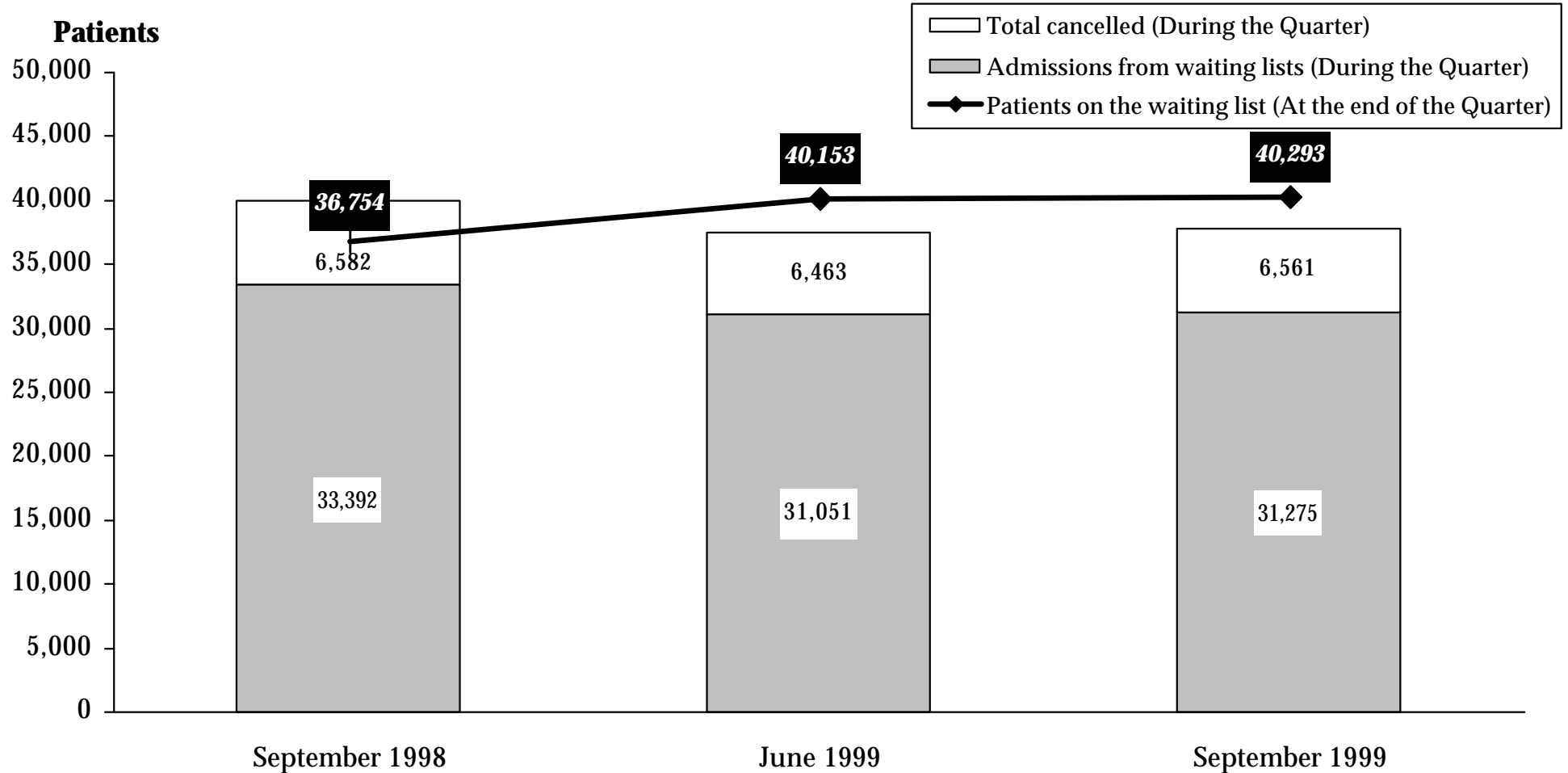
⁴ Barwon Health data for September quarter 1999 are provisional.

⁵ The Latrobe Regional Hospital closed and the New Latrobe Regional Hospital opened on 1 September 1998.

Source: Elective Surgery Information System.

What is the throughput of people waiting for elective surgery?

Figure 5.2 Admissions and Cancellations



¹ From the 1 July 1999, Victoria has adopted the national definition for waiting list numbers. The new definition counts all patients on either the former booking or waiting lists. The time series information has been revised to reflect the new definition. Thus waiting list numbers in this issue of the HSR are different from previous issues.

² September quarter 1999 data are provisional.

What is the throughput of people waiting for elective surgery?

Table 5.2: Admissions and Cancellations, by Individual Hospital ¹

Hospital	Patients on Waiting Lists				Admissions from Waiting Lists				Patients Cancelled from Waiting Lists			
	at 30 Sep 1998	at 30 Jun 1999	at 30 Sep 1999	% Change Jun 1999 to Sep 1999	During the Quarter			% Change Jun 1999 to Sep 1999	During the Quarter			% Change Jun 1999 to Sep 1999
					Sep-98	Jun-99	Sep-99		Sep-98	Jun-99	Sep-99	
North Western Health Care Network												
The Northern Hospital	2,326	2,745	2,795	2%	1,066	991	1,268	28%	264	651	345	-47%
Royal Melbourne Hospital	2,498	3,170	3,188	1%	2,090	1,606	1,563	-3%	500	509	536	5%
Western Hospital ²	2,248	2,173	2,338	8%	2,213	1,188	1,228	3%	749	469	250	-47%
Sunshine Hospital ²		397	499	26%		739	646	-13%		126	96	-24%
Inner and Eastern Health Care Network												
The Alfred	1,797	2,728	2,930	7%	1,688	1,262	1,578	25%	434	410	347	-15%
The Angliss Health Services	488	637	673	6%	534	753	855	14%	61	122	87	-29%
Box Hill Hospital	1,168	1,124	1,084	-4%	1,231	1,452	1,484	2%	143	176	227	29%
Maroondah Hospital	1,600	1,604	1,562	-3%	1,014	892	871	-2%	504	330	209	-37%
The Royal Victorian Eye and Ear Hospital	1,869	2,413	2,615	8%	2,844	2,642	2,708	2%	266	255	294	15%
Southern Health Care Network												
Dandenong Hospital	1,468	1,510	1,640	9%	959	920	791	-14%	223	187	212	13%
Monash Medical Centre	3,758	3,355	3,334	-1%	2,767	2,572	2,324	-10%	644	664	811	22%
Sandringham & District Memorial Hospital	741	847	812	-4%	375	651	595	-9%	90	186	173	-7%
Peninsula Health Care Network												
Frankston Hospital	2,796	2,899	3,094	7%	1,460	1,633	1,397	-14%	365	446	338	-24%

¹ From the 1 July 1999, Victoria has adopted the national definition for waiting list numbers. The new definition counts all patients on either the former booking or waiting lists. The time series information has been revised to reflect the new definition. Thus waiting list numbers in this issue of the HSR are different from previous issues.

² Western Hospital and Sunshine Hospital disaggregated on 4 May 1998 and commenced reporting separately to ESIS from 31 January 1999.

Table 5.2: Admissions and Cancellations, by Individual Hospital (continued)

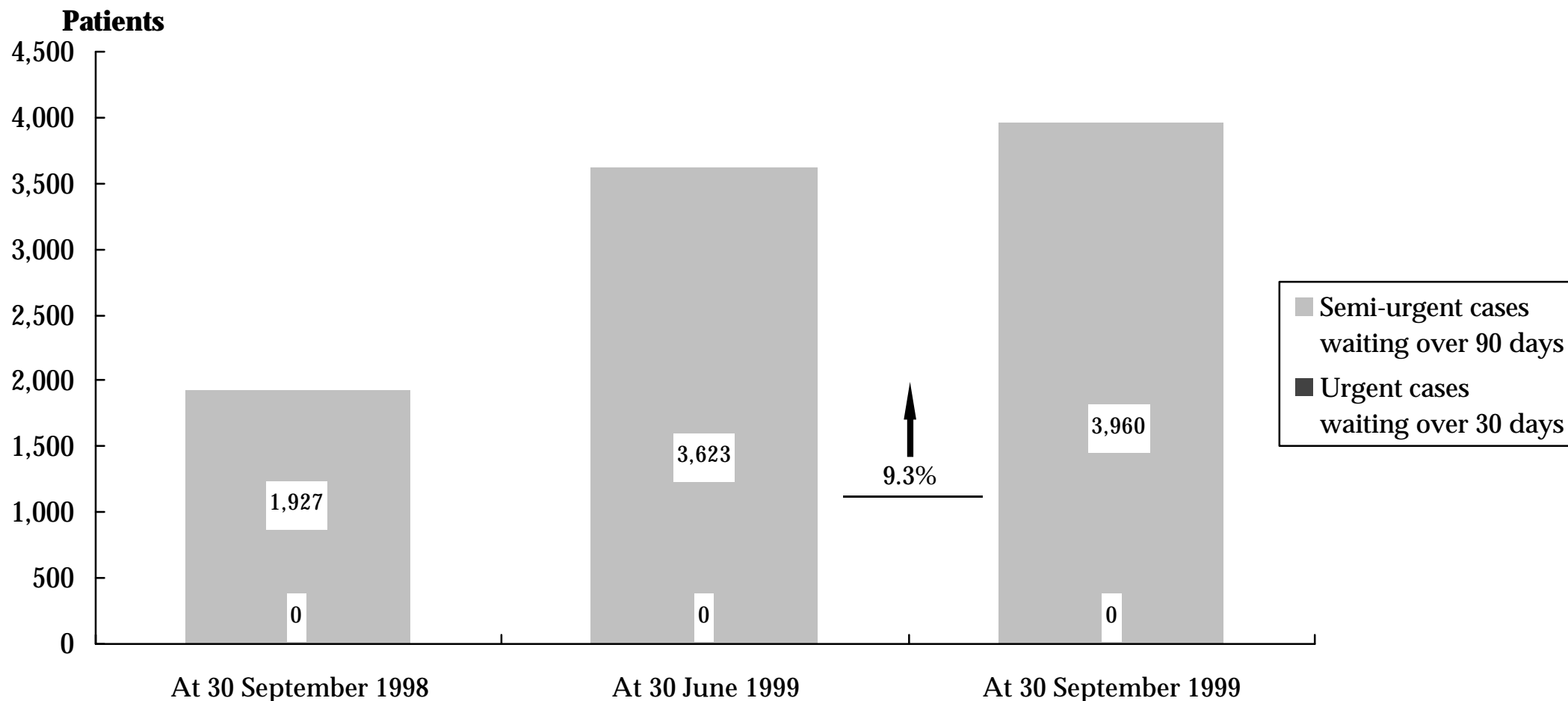
Hospital	Patients on Waiting Lists				Admissions from Waiting Lists				Patients Cancelled from Waiting Lists			
	at 30 Sep 1998	at 30 Jun 1999	at 30 Sep 1999	% Change Jun 1999 to Sep 1999	During the Quarter			% Change Jun 1999 to Sep 1999	During the Quarter			% Change Jun 1999 to Sep 1999
					Sep-98	Jun-99	Sep-99		Sep-98	Jun-99	Sep-99	
Women's and Children's Health Care Network												
Royal Children's Hospital	1,684	1,313	1,290	-2%	2,738	2,718	2,720	0%	213	260	298	15%
Royal Women's Hospital	931	1,004	933	-7%	2,171	2,318	1,956	-16%	370	315	290	-8%
Metropolitan Non-Network Hospitals												
Austin and Repatriation Medical Centre	1,973	2,321	2,408	4%	2,733	1,775	1,814	2%	463	297	487	64%
St Vincent's Hospital	1,661	2,213	1,918	-13%	1,358	1,320	1,513	15%	231	281	503	79%
Non Metropolitan Hospitals												
Ballarat Health Services	2,084	2,151	1,891	-12%	1,248	530	652	23%	458	143	372	160%
Barwon Health ³	2,477	2,193	2,066	-6%	1,368	1,393	1,504	8%	69	142	167	18%
Bendigo Health Care Group	1,005	1,221	1,120	-8%	867	718	760	6%	134	189	201	6%
Goulburn Valley Health	736	603	621	3%	705	644	651	1%	178	64	139	117%
New Latrobe Regional Hospital	749	714	677	-5%	752	1,209	1,172	-3%	91	87	77	-11%
Wangaratta District Base Hospital	327	445	416	-7%	525	512	554	8%	77	87	44	-49%
West Gippsland Hospital	370	373	389	4%	686	613	671	9%	55	67	58	-13%
Total³	36,754	40,153	40,293	0%	33,392	31,051	31,275	1%	6,582	6,463	6,561	2%

³ Barwon Health data for September 1999 quarter are provisional.

Source: Elective Surgery Information System.

How many people are on hospital waiting list for longer than the ideal time?

Figure 5.3 People on elective surgery waiting lists for longer than ideal time by Urgency^{1 2 3 4}



¹ Waiting longer than ideal includes semi-urgent patients waiting over 90 days and urgent patients waiting over 30 days.

² The data involved may be small. Small absolute change may have a large impact on the percentage change.

³ From the 1 July 1999, Victoria has adopted the national definition for waiting list numbers. The new definition counts all patients on either the former booking or waiting lists. However, the number of people waiting more than the ideal time has always included patients on the former booking list as well as the former waiting list.

⁴ September 1999 data are provisional.

How many people are on hospital waiting lists for longer than the ideal time?

Table 5.3 People on elective surgery waiting lists for longer than ideal time, by Individual Hospital ^{1 2}

Hospital	Urgent cases waiting over 30 days				Semi-urgent cases waiting over 90 days			
	30 Sep 1998	30 Jun 1999	30 Sep 1999	% Change Jun 1999 to Sep 1999	30 Sep 1998	30 Jun 1999	30 Sep 1999	% Change Jun 1999 to Sep 1999
North Western Health Care Network								
Northern Hospital	0	0	0	-	52	184	265	44.0%
Royal Melbourne Hospital	0	0	0	-	143	358	368	2.8%
Western Hospital ³	0	0	0	-	18	133	212	59.4%
Sunshine Hospital ³	0	0	0	-	-	0	1	n.a.
Inner and Eastern Health Care Network								
The Alfred	0	0	0	-	111	519	560	7.9%
The Angliss Health Services	0	0	0	-	0	3	0	n.a.
Box Hill Hospital	0	0	0	-	18	12	40	233.3%
Maroondah Hospital	0	0	0	-	0	0	1	n.a.
The Royal Victorian Eye and Ear Hospital	0	0	0	-	464	830	976	17.6%
Southern Health Care Network								
Dandenong Hospital	0	0	0	-	0	27	47	74.1%
Monash Medical Centre	0	0	0	-	218	143	110	-23.1%
Sandringham & District Memorial Hospital	0	0	0	-	4	5	3	-40.0%
Peninsula Health Care Network								
Frankston Hospital	0	0	0	-	89	121	233	92.6%

¹ From the 1 July 1999, Victoria has adopted the national definition for waiting list numbers. The new definition counts all patients on either the former booking or waiting lists. However, the number of people waiting more than the ideal time has always included patients on the former booking list as well as the former waiting list.

² The data involved may be small. Small absolute change may have a large impact on the percentage change.

³ Western Hospital and Sunshine Hospital disaggregated on 4 May 1998 and commenced reporting separately to ESIS from 31 January 1999.

Table 5.3 People on elective surgery waiting lists for longer than ideal time, by Individual Hospital (continued)

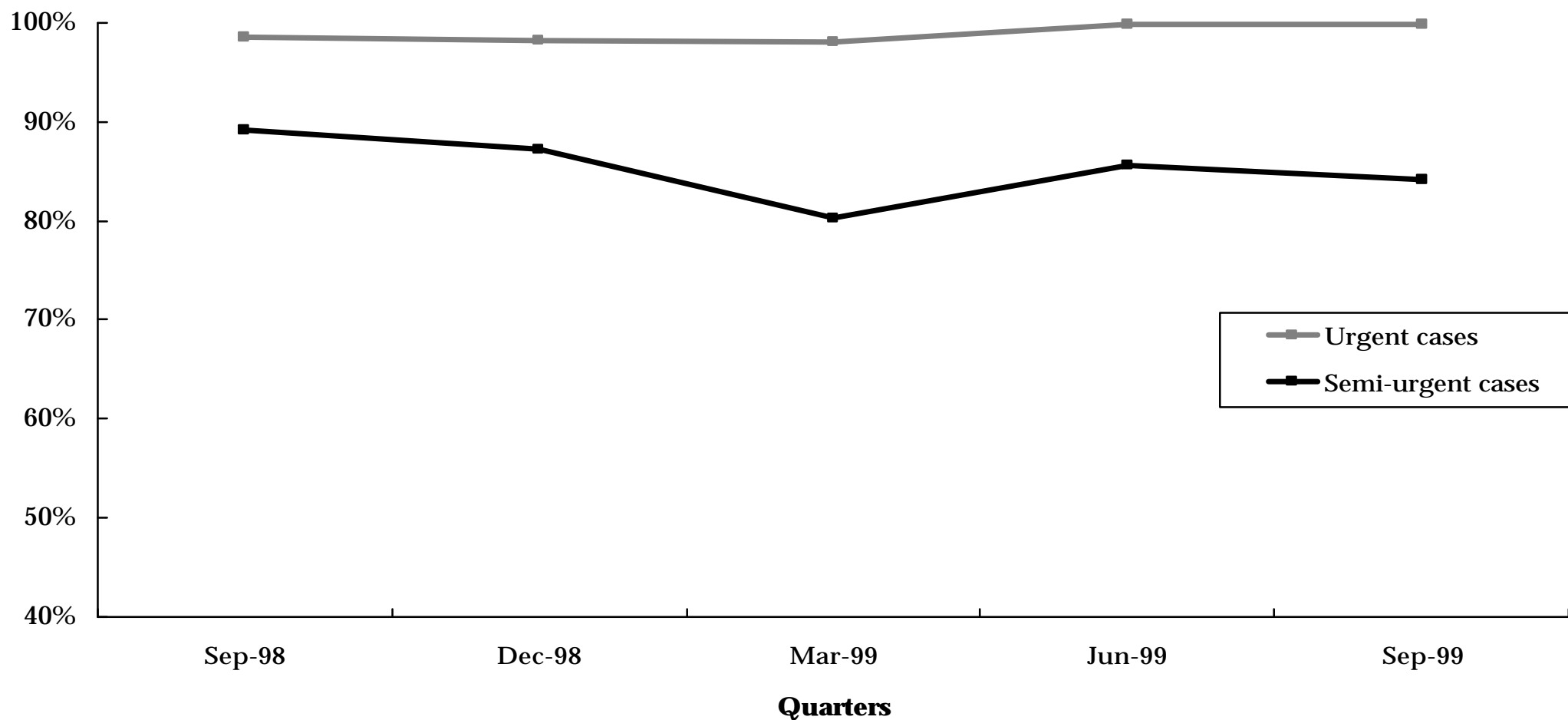
Hospital	Urgent cases waiting over 30 days				Semi-urgent cases waiting over 90 days			
	30 Sep 1998	30 Jun 1999	30 Sep 1999	% Change Jun 1999 to Sep 1999	30 Sep 1998	30 Jun 1999	30 Sep 1999	% Change Jun 1999 to Sep 1999
Women's and Children's Health Care Network								
Royal Children's Hospital	0	0	0	-	5	0	11	n.a.
Royal Women's Hospital	0	0	0	-	9	1	0	-100.0%
Metropolitan Non-Network Hospitals								
Austin & Repatriation Medical Centre	0	0	0	-	165	357	363	1.7%
St Vincent's Hospital	0	0	0	-	210	462	348	-24.7%
Non Metropolitan Hospitals								
Ballarat Health Services	0	0	0	-	181	243	156	-35.8%
Barwon Health ⁴	0	0	0	-	163	140	111	-20.7%
Bendigo Health Care Group	0	0	0	-	25	18	36	100.0%
Goulburn Valley Health	0	0	0	-	27	0	0	-
New Latrobe Regional Hospital	0	0	0	-	0	0	0	-
Wangaratta District Base Hospital	0	0	0	-	18	67	109	62.7%
West Gippsland Hospital	0	0	0	-	7	0	10	n.a.
Total ⁴	0	0	0	-	1,927	3,623	3,960	9.3%

⁴ Barwon Health data for September quarter 1999 are provisional.

Source: Elective Surgery Information System.

What percentage of patients are admitted within clinical ideal times?

Figure 5.4 Percentage of patients from elective surgery waiting lists who were admitted within the ideal time, by Urgency^{1 2}



¹ Waiting longer than ideal includes semi-urgent patients waiting over 90 days and urgent patients waiting over 30 days.

² September quarter 1999 data are provisional.

What percentage of patients are admitted within clinical ideal times?

Table 5.4 Percentage of people from elective surgery waiting lists who were admitted within the ideal time, by Urgency, by Individual Hospital ^{1 2}

Hospital	Urgent cases admitted within 30 days		Semi-urgent cases admitted within 90 days	
	Numbers	Percentage	Numbers	Percentage
North Western Health Care Network				
The Northern Hospital	284	100.0%	521	74.5%
Royal Melbourne Hospital	404	100.0%	691	81.2%
Western Hospital	236	100.0%	464	76.6%
Sunshine Hospital	44	100.0%	128	98.5%
Inner and Eastern Health Care Network				
The Alfred	539	99.8%	627	74.3%
The Angliss Health Services	88	96.7%	436	98.9%
Box Hill Hospital	200	99.5%	803	92.1%
Maroondah Hospital	178	100.0%	278	99.3%
The Royal Victorian Eye and Ear Hospital	–	–	2137	79.0%
Southern Health Care Network				
Dandenong Hospital	253	100.0%	188	81.4%
Monash Medical Centre	581	100.0%	774	95.0%
Sandringham & District Memorial Hospital	79	100.0%	243	96.0%
Peninsula Health Care Network				
Frankston Hospital	337	99.7%	370	71.6%

¹ Urgent cases for September 1999 data are provisional and therefore subject to amendment.

² The data involved may be small. Small absolute change may have a large impact on the percentage change.

Table 5.4 Percentage of people from elective surgery waiting lists who were admitted within the ideal time, by Urgency, by Individual Hospital

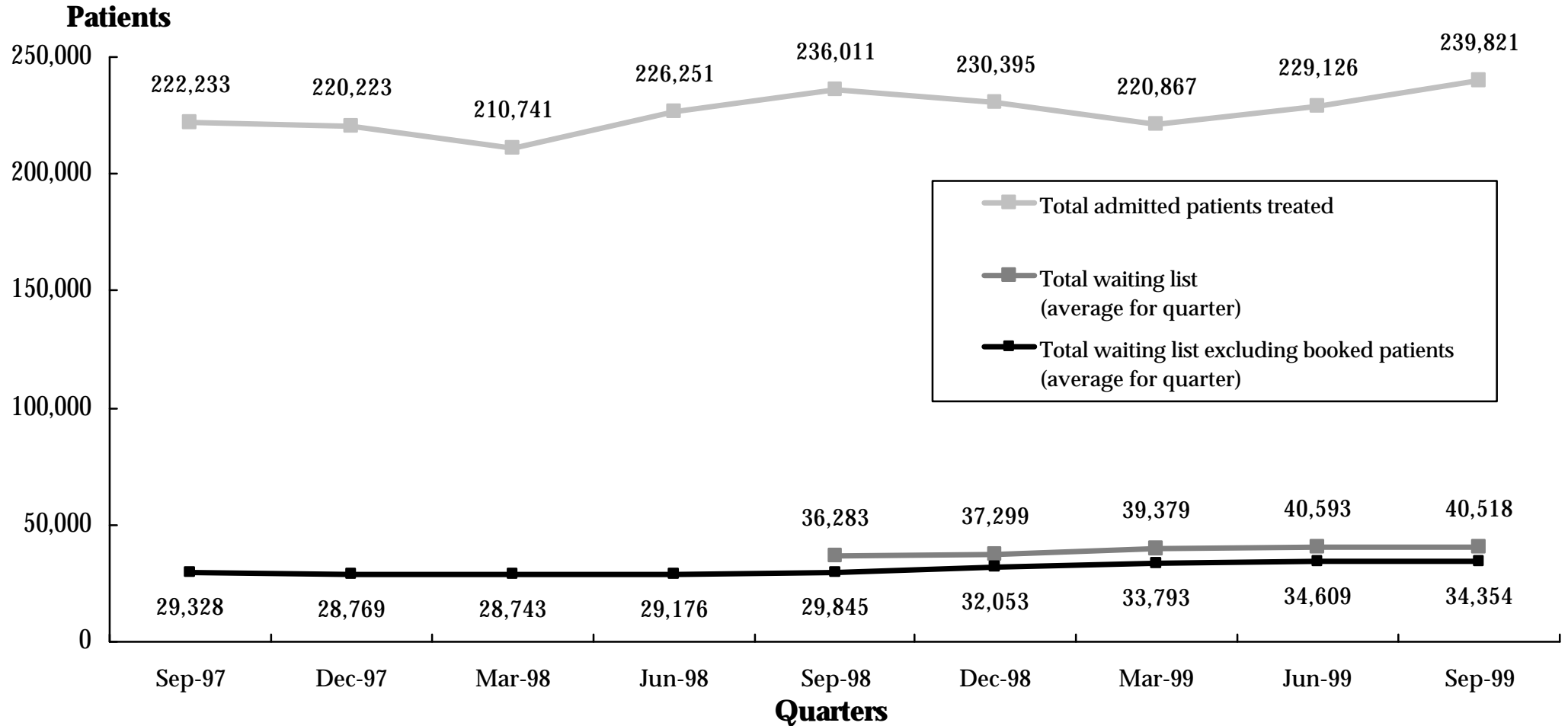
Hospital	Urgent cases admitted within 30 days		Semi-urgent cases admitted within 90 days	
	Numbers	Percentage	Numbers	Percentage
Women's and Children's Health Care Network				
Royal Children's Hospital	319	100.0%	418	95.2%
Royal Women's Hospital	234	100.0%	625	99.5%
Metropolitan Non-Network Hospitals				
Austin & Repatriation Medical Centre	452	100.0%	782	81.8%
St Vincent's Hospital	288	100.0%	748	76.8%
Non Metropolitan Hospitals				
Ballarat Health Services	40	100.0%	303	73.4%
Barwon Health ³	109	100.0%	688	82.3%
Bendigo Health Care Group	92	100.0%	184	79.0%
Goulburn Valley Health	123	100.0%	350	99.7%
New Latrobe Regional Hospital	123	99.2%	358	100.0%
Wangaratta District Base Hospital	24	100.0%	325	81.5%
West Gippsland Hospital	164	100.0%	249	96.9%
Total ³	5,191	99.9%	12,690	84.1%

³ Barwon Health data for September quarter 1999 are provisional.

Source: Elective Surgery Information System.

How does the waiting list compare to the total number of patients treated?

Figure 5.5 Waiting List Compared with Overall Admitted Patient Activity^{1 2 3}



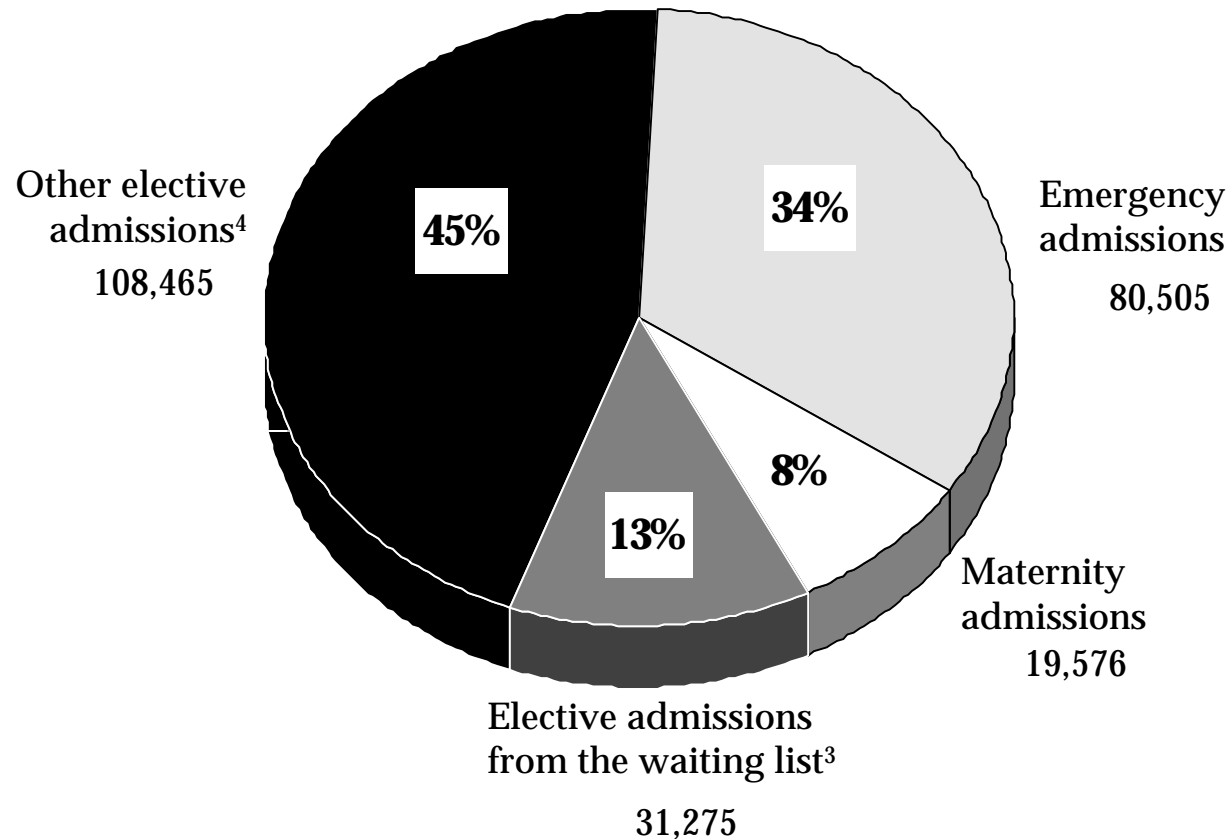
¹ Data in the current quarter for Total Admitted Patients Treated are provisional.

² From the 1 July 1999, Victoria has adopted the national definition for waiting list numbers. The new definition counts all patients on either the former booking or waiting lists. For an interim period the numbers of patients according to the current (Total waiting list) and the former (Total waiting list excluding booked patients) definitions will be displayed.

³ September quarter 1999 data are provisional.

How much of total hospital activity comes from the waiting list?

Figure 5.6 Separations by Admission Type: September Quarter 1999 ^{1 2}



¹ Percentages may not add due to rounding.

² Includes maternity and newborns admissions.

³ Patients admitted from the Elective Surgery Information System waiting list during the quarter:
The data are provisional.

⁴ Includes statistical admissions, which refer to a change in patient care type.

6. Glossary

What do the terms used in this report mean?

Admitted Patient

Someone who is an inpatient in a hospital. Sameday patients who are admitted for less than 24 hours are also counted as inpatients but people who attend hospital for outpatient clinics are not.

Cancellation

The request for elective surgery has been withdrawn and the patient is removed from this hospital's Waiting List without admission for the awaited procedure. This can occur for clinical reasons, transfer of the patient to another hospital, or at the request of the patient.

Casemix Funded

A system of funding hospitals according to the actual number and type of services that they provide. Casemix funding was introduced for most Victorian public hospitals in July 1993.

Coronary Care

A hospital unit with specialised staff and equipment to care for patients with heart disease.

Elective Admission

A planned admission to hospital. Emergency admissions and transfers from other hospitals are not counted as elective admissions.

Elective Surgery

Planned surgery that is not an emergency requiring hospital admission within 24 hours.

Emergency Admission

An unplanned admission to hospital due to unexpected illness or injury that requires urgent care.

Emergency Department

A hospital department that specialises in providing emergency care for people who are in need of urgent care (ambulance cases for example) and people who choose to seek treatment in an emergency department.

Health Care Network

A group of community acute hospitals, psychiatric services, tertiary acute hospitals and aged care services in the metropolitan area that is managed by a single board of directors.

Intensive Care

A hospital unit with specialised staff and equipment to provide continuous care for critically ill, injured or post-operative patients.

Non Sameday Patient

In the context of this report, a non sameday patient is an inpatient who leaves hospital on a later date than when they were admitted.

Separation

When an inpatient leaves a hospital. This is the technical way of counting the number of inpatients treated by a hospital.

Step Down Bed

Hospital beds with specialised staff and equipment to care for patients who no longer need coronary or intensive care but are not yet ready to move to a general hospital ward.

Transfer

When an inpatient is moved from one hospital to another. This might be in order to obtain a specialised treatment not available at the first hospital or because of the patient's preferences.

Waiting List Hospital

A major public hospital that performs elective surgery for public patients and uses a waiting list to properly keep track of people who require elective surgery.