

# **Hospital services report**

## **September quarter 2004**

# Notes

This document contains the most up-to-date information available at the time of preparation.

The *Hospital services report* is available on the Department of Human Services internet site located at:

<http://www.health.vic.gov.au/hsr/index.htm>

Design and production by Department of Human Services, Melbourne, Victoria.

January 2005

© Department of Human Services 2005

This publication is copyright. No part may be reproduced by any process except in accordance with the provisions of the *Copyright Act 1968*.

# Contents

Introduction	1
1. Patients waiting for residential aged care placement	3
2. Hospital admitted patient activity	5
3. Access to emergency services	7
4. Access to critical care services	17
5. Access to elective surgery	19
6. Private health insurance	31
7. Glossary	33

This page has been left blank intentionally.

# Introduction

Consumers, health care providers and government all need information relating to the quality of health services. Public access to information assists consumers to understand the health care system, assists providers of health services in planning, and increases the accountability of the Department of Human Services to the people in the state of Victoria, Australia.

The *Hospital services report* was introduced in 1995. This edition includes data for the September quarter 2004, which covers the months of July, August and September.

The information included in this report is often requested from the department. Since technical information of this nature is very difficult to interpret, each graph and table needs to be carefully considered in the context of the complexity of the health care system. Department staff, hospital staff, general practitioners and other health care professionals may be able to assist you to interpret this report.

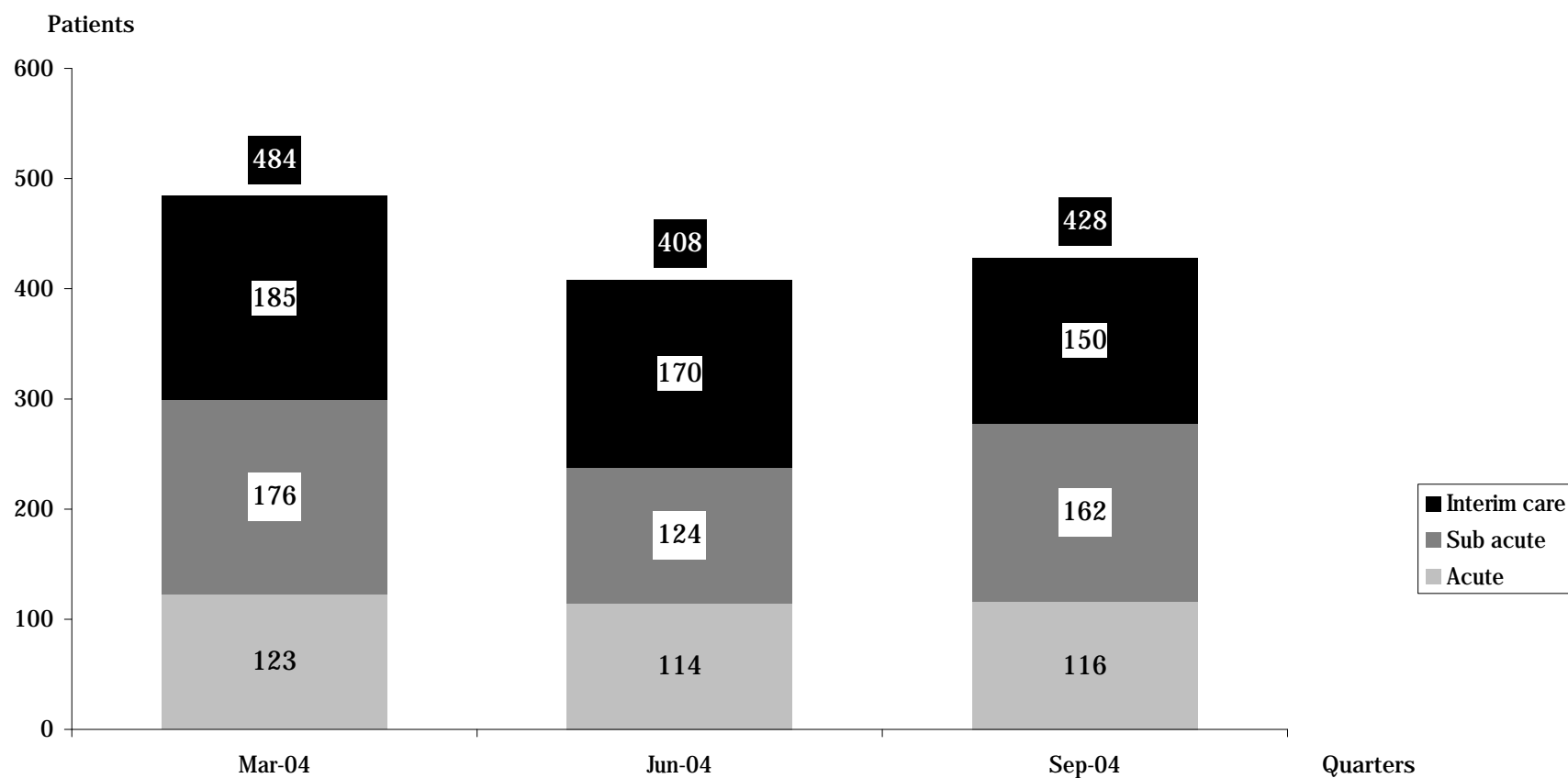
A number of graphs and tables refer to major metropolitan hospitals. A list of the major metropolitan hospitals can be found in the glossary.

This page has been left blank intentionally.

# 1. Patients waiting for residential aged care placement

## How many patients are waiting for residential aged care placements?

Fig 1.1 Number of acute, subacute and interim care patients waiting for residential aged care placement <sup>1 2 3 4</sup>



<sup>1</sup> Hospitals reporting sub acute are Angliss, Anne Caudle, Bundoora Extended Care, Bethlehem, Broadmeadows, Caritas Christi, Caulfield General, Dandenong, Goulburn Valley, Grace McKellar, Kingston, Latrobe Regional, Maroondah, Mt Eliza, Melbourne Extended Care Rehabilitation Service, Peter James, Queen Elizabeth Centre, Royal Talbot, St George's, Sunshine and Williamstown.

<sup>2</sup> Hospitals reporting acute are the Alfred, Angliss, Austin Hospital, Ballarat, Barwon Health, Bendigo, Box Hill, Dandenong, Frankston, Goulburn Valley, Latrobe Regional, Maroondah, Monash Medical Centre (Clayton & Moorabbin), The Northern, Rosebud, Royal Melbourne, Sandringham, St Vincent's, Sunshine, Western and Williamstown.

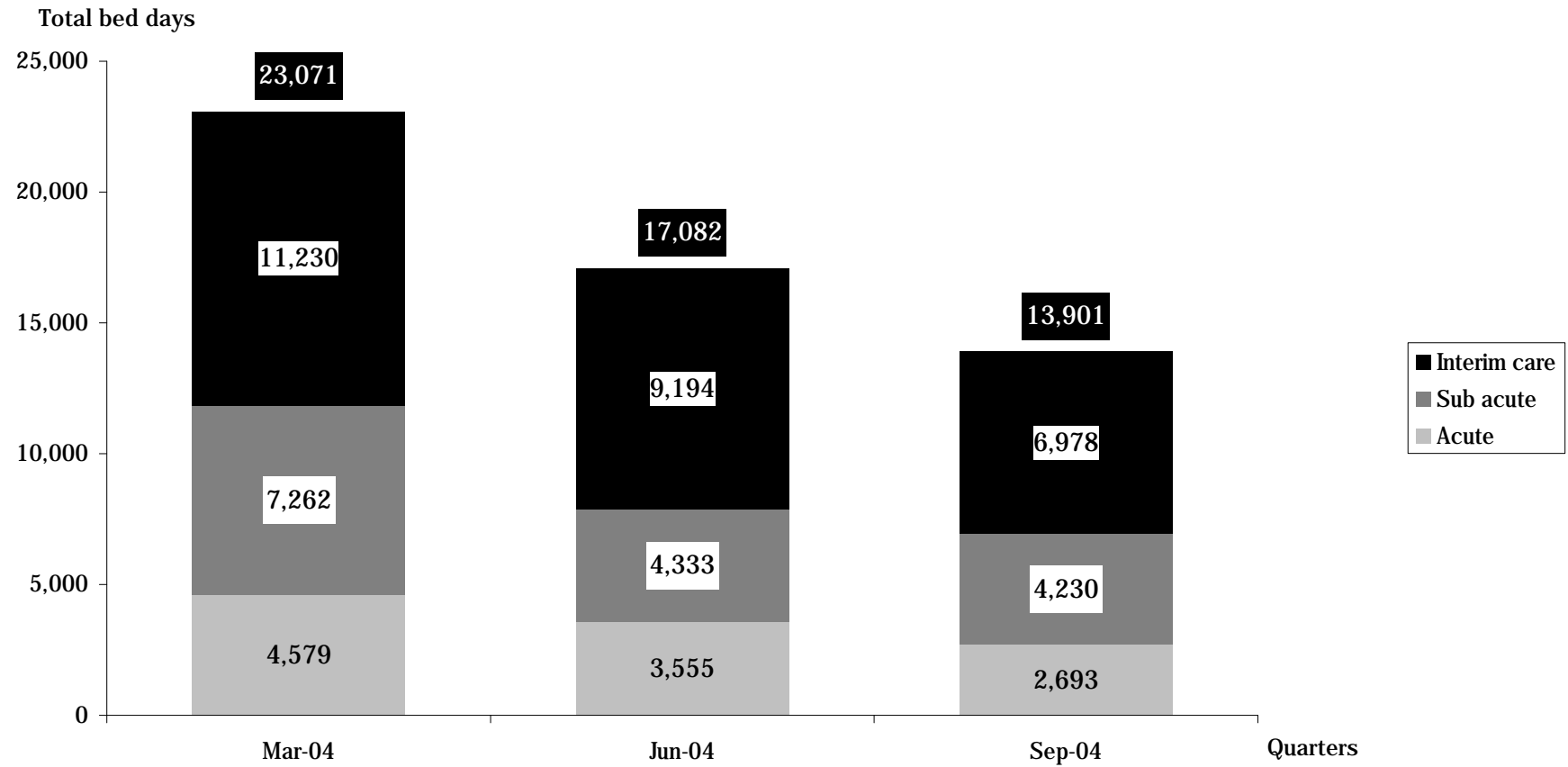
<sup>3</sup> Hospitals reporting interim care are Eastern Health, Melbourne Health, Northern Health, Peninsula Health, St Vincent's Health, Southern Health and Western Health.

<sup>4</sup> Data for September 2004 are provisional.

Source: Department of Human Services bed census.

# How many patients are waiting for residential aged care placements?

Fig 1.2 Number of bed days patients wait for residential aged care placement



<sup>1</sup> Notes for figure 1.1 apply.

Source: Department of Human Services bed census.

## 2. Hospital admitted patient activity

How many patients are admitted to hospital?

Table 2.1 Admitted patients by individual hospital <sup>1 2</sup>

Hospital	September quarter 2003	June quarter 2004	September quarter 2004	% change September 2003 to September 2004
<b>Major metropolitan hospitals <sup>3</sup></b>				
Angliss Hospital	5,976	5,529	6,136	2.7%
Austin Hospital	17,841	17,196	18,458	3.5%
Box Hill Hospital	11,461	10,968	11,665	1.8%
Dandenong Hospital	7,393	7,105	7,541	2.0%
Frankston Hospital	11,498	11,434	11,741	2.1%
Maroondah Hospital	5,340	5,620	6,036	13.0%
Monash Medical Centre	21,907	21,627	22,788	4.0%
Royal Melbourne Hospital	21,410	21,056	21,412	0.0%
St Vincent's Hospital	11,659	11,210	12,192	4.6%
Sunshine Hospital	7,601	8,001	8,474	11.5%
The Alfred	13,247	12,817	13,465	1.6%
The Northern Hospital	7,588	8,112	9,246	21.9%
Western Hospital	8,912	9,519	10,151	13.9%
<b>Other metropolitan hospitals</b>				
Caulfield General Medical Centre	591	391	428	-27.6%
Mercy Public Hospital, East Melbourne	4,759	4,556	4,676	-1.7%
Peter MacCallum Cancer Institute	4,729	5,227	5,263	11.3%
Royal Children's Hospital	8,523	8,428	9,166	7.5%
Royal Women's Hospital	8,192	7,042	7,790	-4.9%
Sandringham & District Memorial Hospital	4,139	4,150	4,419	6.8%
The Royal Victorian Eye & Ear Hospital	3,405	3,464	3,569	4.8%
Other Metropolitan hospitals	13,524	13,622	14,483	7.1%

<sup>1</sup> Data refer to the number of WIES-fundable separations.

<sup>2</sup> 2004/2005 data are provisional.

<sup>3</sup> Major metropolitan hospitals contain the campuses listed in the glossary.

Table 2.1 Admitted patients by individual hospital (continued)

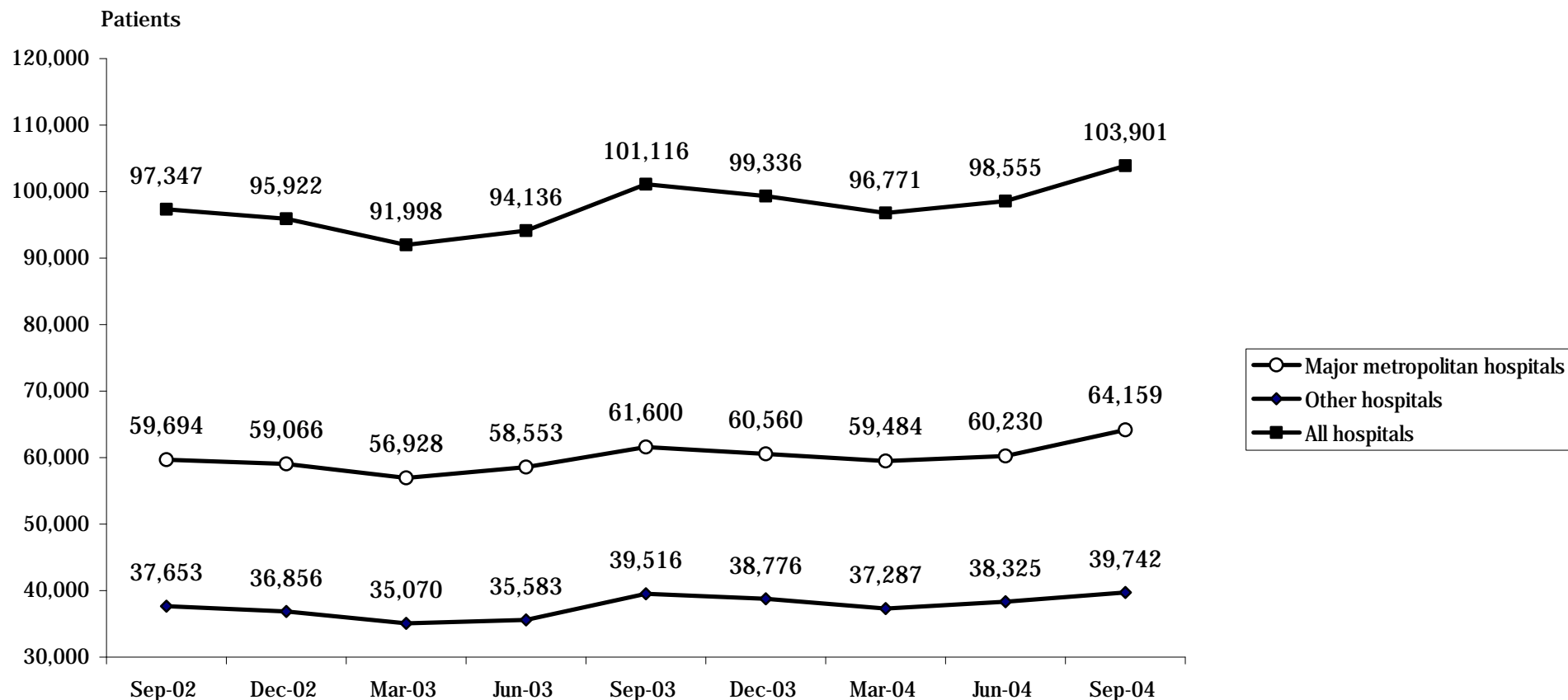
Hospital	September quarter 2003	June quarter 2004	September quarter 2004	% change September 2003 to September 2004
<b>Major regional hospitals</b>				
Ballarat Health Services	6,279	6,048	6,527	3.9%
Barwon Health	14,409	14,053	14,737	2.3%
Bendigo Health Care Group	6,339	6,136	6,361	0.3%
Goulburn Valley Health	5,244	5,296	5,685	8.4%
Latrobe Regional Hospital	5,880	6,013	6,301	7.2%
<b>Other rural hospitals</b>				
Central Gippsland Health Service	3,018	2,563	2,794	-7.4%
Northeast Health Wangaratta	3,453	3,285	3,335	-3.4%
South West Healthcare	3,773	3,747	3,917	3.8%
Wimmera Health Care Group	2,468	2,379	2,457	-0.4%
Wodonga Regional Health Service	4,326	4,099	4,342	0.4%
Other rural hospitals	37,744	36,833	37,548	-0.5%
<b>Grand total</b>	<b>292,628</b>	<b>287,526</b>	<b>303,103</b>	<b>3.6%</b>

Source: Victorian admitted episode dataset (18 November 2004 update).

### 3. Access to emergency services

#### How many emergency patients are admitted to hospital?

Fig 3.1 Patients admitted to public hospitals requiring emergency care <sup>1 2 3</sup>



<sup>1</sup> Major metropolitan hospitals contain the campuses listed in the glossary.

<sup>2</sup> Data refer to the number of WIES-fundable separations.

<sup>3</sup> 2004/2005 data are provisional.

Source: Victorian admitted episode dataset (18 November 2004 update).

## How many emergency patients are admitted to hospital?

Table 3.1 Emergency admissions <sup>1 2 3</sup>

Hospital	September quarter 2003	June quarter 2004	September quarter 2004	% change June 2004 to September 2004	% change September 2003 to September 2004
<b>Major metropolitan hospitals</b>					
Angliss Hospital	2,290	2,206	2,565	16.3%	12.0%
Austin Hospital	5,849	5,188	5,608	8.1%	-4.1%
Box Hill Hospital	5,614	5,364	5,725	6.7%	2.0%
Dandenong Hospital	4,768	4,305	4,621	7.3%	-3.1%
Frankston Hospital	5,881	6,026	6,057	0.5%	3.0%
Maroondah Hospital	3,163	3,612	3,755	4.0%	18.7%
Monash Medical Centre	7,418	6,930	7,345	6.0%	-1.0%
Royal Melbourne Hospital	6,270	5,818	6,043	3.9%	-3.6%
St Vincent's Hospital	4,125	3,975	4,297	8.1%	4.2%
Sunshine Hospital	3,291	3,607	3,743	3.8%	13.7%
The Alfred	4,454	4,627	4,539	-1.9%	1.9%
The Northern Hospital	3,888	4,066	4,915	20.9%	26.4%
Western Hospital	4,589	4,506	4,946	9.8%	7.8%
<b>Major hospitals total</b>	<b>61,600</b>	<b>60,230</b>	<b>64,159</b>	<b>6.5%</b>	<b>4.2%</b>
<b>Other hospitals total</b>	<b>39,516</b>	<b>38,325</b>	<b>39,742</b>	<b>3.7%</b>	<b>0.6%</b>
<b>Grand total</b>	<b>101,116</b>	<b>98,555</b>	<b>103,901</b>	<b>5.4%</b>	<b>2.8%</b>

<sup>1</sup> 2004/2005 data are provisional.

<sup>2</sup> Data exclude elective, maternity, newborn and statistical admissions.

<sup>3</sup> Data refer to the number of WIES-fundable separations.

Source: Victorian admitted episode dataset (18 November 2004 update).

## How many patients are treated in each hospital emergency department?

Table 3.2 Patients treated in hospital emergency departments by Individual Hospitals <sup>1 2</sup>

Hospital	September quarter 2003	June quarter 2004	September quarter 2004	% change September 2003 to September 2004
<b>Major metropolitan hospitals</b>				
Angliss Hospital	9,503	8,848	9,262	-2.5%
Austin Hospital	10,063	9,612	9,984	-0.8%
Box Hill Hospital	9,446	9,245	9,350	-1.0%
Dandenong Hospital	11,705	10,941	11,200	-4.3%
Frankston Hospital	11,167	11,337	11,492	2.9%
Maroondah Hospital	8,187	9,161	9,238	12.8%
Monash Medical Centre	13,724	13,390	13,901	1.3%
Royal Melbourne Hospital	11,465	10,878	11,182	-2.5%
St Vincent's Hospital	7,433	7,452	7,928	6.7%
Sunshine Hospital	14,308	13,944	14,221	-0.6%
The Alfred	9,866	9,218	8,864	-10.2%
The Northern Hospital	13,865	15,000	15,799	13.9%
Western Hospital	7,722	7,659	7,907	2.4%
<b>Other metropolitan hospitals</b>				
Royal Children's Hospital	15,548	14,098	14,515	-6.6%
<b>Major regional hospitals</b>				
Ballarat Health Services	9,034	8,413	8,714	-3.5%
Barwon Health	9,533	9,384	9,330	-2.1%
Bendigo Health Care Group	7,989	7,903	7,542	-5.6%
Goulburn Valley Health	7,271	7,036	7,056	-3.0%
Latrobe Regional Hospital	6,641	6,184	6,187	-6.8%
<b>Grand total</b>	<b>194,470</b>	<b>189,703</b>	<b>193,672</b>	<b>-0.4%</b>

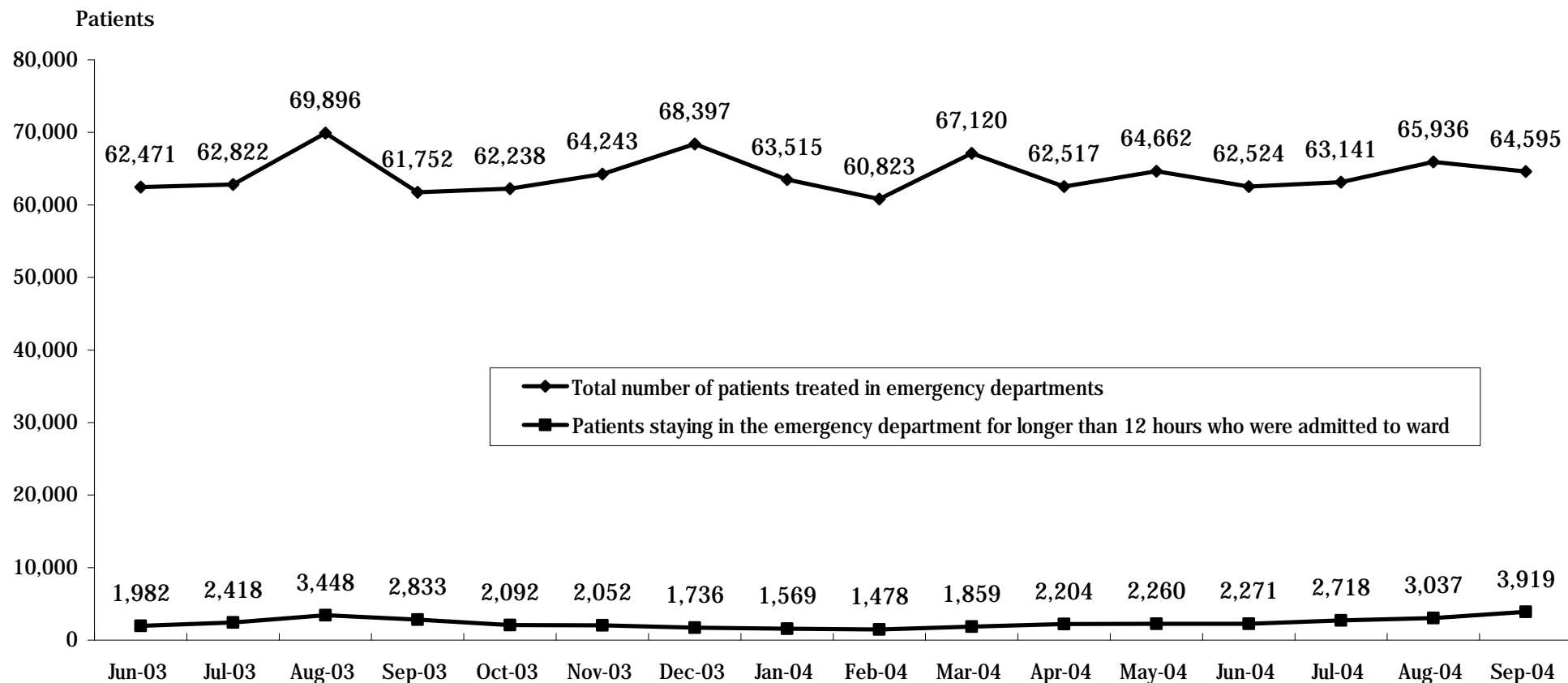
<sup>1</sup> Data include all emergency department patients, that is, they include patients who are subsequently admitted to hospital and patients who are treated in the emergency department without being admitted to hospital.

<sup>2</sup> 2004/2005 data are provisional.

Source: Victorian emergency minimum dataset.

## How many patients stay for an extended period in the emergency department?

Fig 3.2 Patients staying in emergency departments for over 12 hours while waiting for a hospital bed <sup>2</sup>



<sup>1</sup> The period of 'stay' is calculated from the time the patient arrives in the emergency department to the time when the patient leaves the emergency department.

<sup>2</sup> 2004/2005 data are provisional.

Source: Victorian emergency minimum dataset.

Table 3.3 Patients staying in selected public hospital emergency departments for over 12 hours while waiting for a hospital bed <sup>1 2 3</sup>

Hospital	September quarter 2003		June quarter 2004		September quarter 2004	
	Numbers	Percentage	Numbers	Percentage	Numbers	Percentage
<b>Major metropolitan hospitals</b>						
Angliss Hospital	252	20%	154	13%	208	17%
Austin Hospital	656	19%	490	16%	682	21%
Box Hill Hospital	602	19%	461	16%	556	18%
Dandenong Hospital	580	23%	574	24%	684	28%
Frankston Hospital	306	9%	552	11%	842	16%
Maroondah Hospital	429	24%	460	21%	468	22%
Monash Medical Centre	1,025	29%	659	19%	1,045	30%
Royal Melbourne Hospital	1,114	31%	699	21%	1,001	28%
St Vincent's Hospital	116	8%	104	6%	464	23%
Sunshine Hospital	198	12%	116	8%	250	16%
The Alfred	902	37%	843	35%	1,024	45%
The Northern Hospital	780	34%	332	8%	733	15%
Western Hospital	625	27%	210	9%	534	24%
<b>Other metropolitan hospitals</b>						
Royal Children's Hospital	158	5%	121	4%	107	3%
<b>Major regional hospitals</b>						
Ballarat Health Services	20	1%	21	1%	40	3%
Barwon Health	382	14%	366	10%	397	12%
Bendigo Health Care Group	179	11%	106	7%	202	14%
Goulburn Valley Health	194	15%	393	20%	367	18%
Latrobe Regional Hospital	181	15%	74	6%	70	5%
<b>Grand total</b>	<b>8,699</b>	<b>19%</b>	<b>6,735</b>	<b>14%</b>	<b>9,674</b>	<b>19%</b>

<sup>1</sup> The period of 'stay' is calculated from the time the patient arrives in the emergency department to the time when the patient leaves the emergency department.

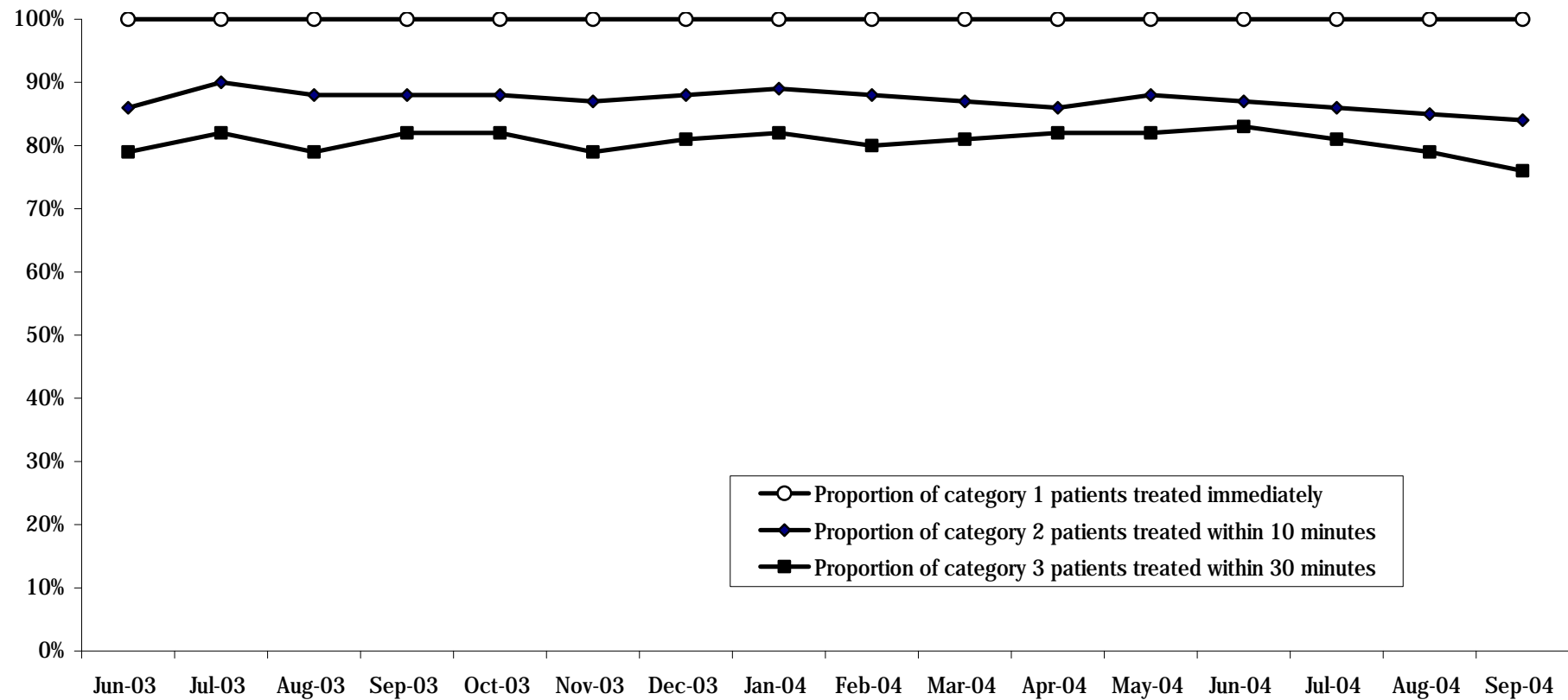
<sup>2</sup> Data represent the number of emergency department patients admitted to ward who spend more than 12 hours in the emergency department prior to being admitted as a proportion of all emergency patients being admitted to ward.

<sup>3</sup> 2004/2005 data are provisional.

Source: Victorian emergency minimum dataset.

## How many emergency patients are treated within ideal time?

Fig 3.3 Emergency department achievement of ACEM waiting times by triage category<sup>1 2 3</sup>



<sup>1</sup> Waiting times are calculated as the time between presentation at the emergency department and commencement of treatment. The following Australasian College for Emergency Medicine (ACEM) patient categories and recommended treatment times are used:

Category 1: Resuscitation case requiring immediate treatment, for example, major trauma, cardiac arrest, unconsciousness, shock.

Category 2: Emergency case requiring treatment within 10 minutes, for example, severe trauma, chest pain, severe pain, severe breathing difficulty.

Category 3: Urgent case requiring treatment within 30 minutes, for example, moderate trauma, infection, or breathing difficulty.

<sup>2</sup> The business rule for 'treatment time' changed in July 2002, now taking into account treatment by nurses.

<sup>3</sup> 2004/2005 data are provisional.

## How many emergency department patients are treated within ideal time?

Table 3.4 Patients treated in selected public hospital emergency departments in triage category 1, 2 or 3 within ACEM recommended waiting times: September quarter 2004 <sup>1 2 3</sup>

Hospital	Triage Category 1		Triage Category 2		Triage Category 3	
	Total patients	Treated within recommended time	Total patients	Treated within recommended time	Total patients	Treated within recommended time
<b>Major metropolitan hospitals</b>						
Angliss Hospital	31	100%	411	66%	2,132	75%
Austin Hospital	116	100%	837	81%	3,823	74%
Box Hill Hospital	91	100%	1,119	81%	3,679	59%
Dandenong Hospital	91	100%	991	93%	3,110	90%
Frankston Hospital	113	100%	2,936	91%	5,324	73%
Maroondah Hospital	69	100%	622	62%	2,942	69%
Monash Medical Centre	155	100%	1,737	85%	4,999	76%
Royal Melbourne Hospital	325	100%	1,492	68%	3,268	79%
St Vincent's Hospital	144	100%	734	75%	3,277	58%
Sunshine Hospital	59	100%	808	100%	4,347	87%
The Alfred	245	100%	1,301	78%	3,539	79%
The Northern Hospital	90	100%	923	98%	3,650	97%
Western Hospital	100	100%	875	97%	2,520	95%
<b>Other metropolitan hospitals</b>						
Royal Children's Hospital	61	100%	481	85%	3,878	75%
<b>Major regional hospitals</b>						
Ballarat Health Services	53	100%	221	86%	1,649	93%
Barwon Health	64	100%	918	98%	2,575	96%
Bendigo Health Care Group	55	100%	704	77%	2,493	72%
Goulburn Valley Health	27	100%	461	82%	1,855	86%
Latrobe Regional Hospital	39	100%	304	96%	1,602	93%
<b>Grand total</b>	<b>1,928</b>	<b>100%</b>	<b>17,875</b>	<b>85%</b>	<b>60,662</b>	<b>79%</b>

<sup>1</sup> Australian College for Emergency Medicine (ACEM).

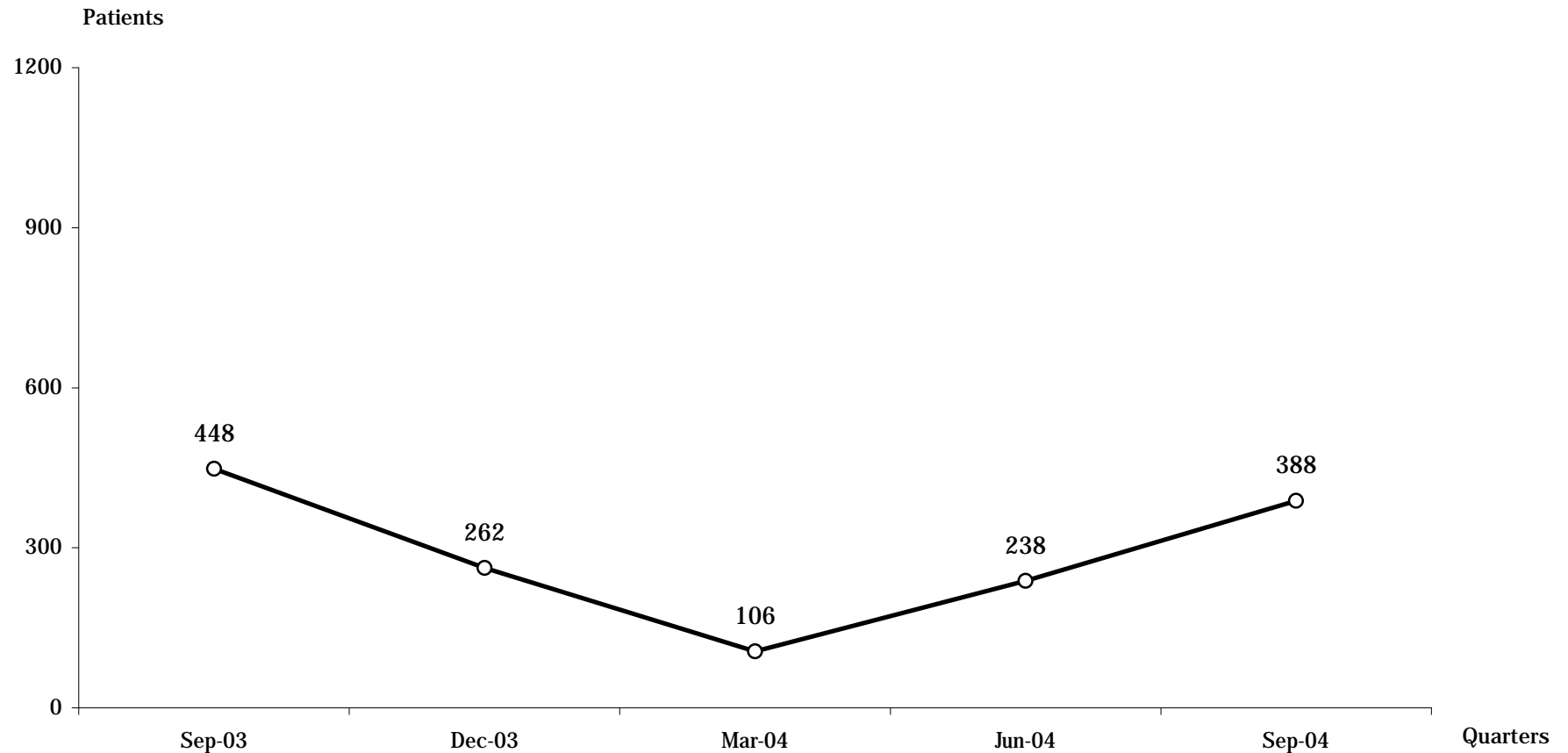
<sup>2</sup> The business rule for 'treatment time' changed in July 2002/03, now taking into account treatment from nurses.

<sup>3</sup> 2004/2005 data are provisional.

Source: Victorian emergency minimum dataset.

## How often do hospital emergency departments go on 'bypass'?

Fig 3.4 Periods of ambulance bypass of public hospitals <sup>1 2</sup>



<sup>1</sup> Hospital emergency departments can request to go on ambulance bypass when the emergency department has reached maximum capacity and the treatment of patients already in the emergency department could be significantly compromised with the arrival, by ambulance, of further patients. Each individual period of ambulance bypass is for two hours or less.

<sup>2</sup> Bypass policy allows for critically ill or injured patients to be taken to the nearest hospital emergency department regardless of bypass status.

<sup>3</sup> Metropolitan Ambulance Service (MAS) response times are now being reported in the MAS Response Report: A Quarterly Statistical Review of MAS, Melbourne. Copies of the response report can be obtained from MAS, Corporate Planning and Corporate Communications Unit, phone (03) 9840 3648.

Source: Metropolitan Ambulance Service.

## How often do hospital emergency departments go on bypass?

Table 3.5 Periods of ambulance bypass, by individual hospital <sup>12</sup>

Hospital	Sep-03 qtr	Dec-03 qtr	Mar-04 qtr	Jun-04 qtr	Sep-04 qtr
<b>Major metropolitan hospitals</b>					
Angliss Hospital	20	11	3	8	7
Austin Hospital	27	16	5	25	20
Box Hill Hospital	34	25	7	29	41
Dandenong Hospital	78	31	30	36	61
Frankston Hospital	40	35	20	35	43
Maroondah Hospital	18	1	5	9	1
Monash Medical Centre	54	40	3	17	30
Royal Melbourne Hospital	40	35	12	25	57
St Vincent's Hospital	18	13	4	8	12
Sunshine Hospital	20	5	1	0	7
The Alfred	13	28	9	37	97
The Northern Hospital	16	0	0	0	0
Western Hospital	70	22	7	9	12
<b>Total</b>	<b>448</b>	<b>262</b>	<b>106</b>	<b>238</b>	<b>388</b>

<sup>1</sup> Hospital emergency departments can request to go on ambulance bypass when the emergency department has reached maximum capacity and the treatment of patients already in the emergency department could be significantly compromised with the arrival by ambulance, of further patients.

<sup>2</sup> Metropolitan Ambulance Service (MAS) response times are now being reported in the *MAS Response Report: A Quarterly Statistical Review of MAS, Melbourne*. Copies of the response report can be obtained from MAS, Corporate Planning and Corporate Communications Unit, phone (03) 9840 3648.

Source: Metropolitan Ambulance Service.

This page has been left blank intentionally.

## 4. Access to critical care services

### How many hospital beds are available for patients who need intensive care?

Table 4.1 Average number of public hospital intensive care beds available and open at 9:00 a.m., by month <sup>1 2</sup>

	Jul-03	Aug-03	Sep-03	Oct-03	Nov-03	Dec-03	Jan-04	Feb-04	Mar-04	Apr-04	May-04	Jun-04	Jul-04	Aug-04	Sep-04
Available <sup>3</sup>	2.9	1.7	1.4	3.1	3.0	4.6	5.4	3.5	2.3	4.4	2.7	1.9	1.7	0.8	1.0
Total open <sup>4</sup>	107.8	106.6	104.6	103.9	104.0	102.3	97.1	105.5	105.3	102.1	100.7	106.2	106.0	106.3	105.5
Available (including Barwon Health)	3.2	2.2	1.9	3.8	3.5	5.0	6.8	4.2	2.8	5.3	3.0	2.3	2.2	1.3	1.4
Total open ICU (incl Barwon Health)	116.5	114.0	112.3	110.2	111.2	110.1	103.3	111.3	111.8	108.9	108.3	113.8	113.5	113.3	112.8
<b>Total open ICU &amp; HDU (incl Barwon Health)</b>	<b>142.0</b>	<b>141.3</b>	<b>139.8</b>	<b>139.1</b>	<b>142.0</b>	<b>140.7</b>	<b>133.6</b>	<b>140.2</b>	<b>144.0</b>	<b>143.7</b>	<b>142.6</b>	<b>143.1</b>	<b>142.0</b>	<b>143.9</b>	<b>141.4</b>

<sup>1</sup> Based upon hospital census taken at 9:00 a.m. daily.

<sup>2</sup> The data in this table represents an average for each month and varies from table 4.3 which gives averages for the quarter.

<sup>3</sup> Available beds are unoccupied beds which are staffed, functional and available to receive new patients.

<sup>4</sup> Total open beds are all functioning and staffed beds, regardless of whether they are occupied.

Source: Victorian Adult Emergency Retrieval and Coordination Service.

### How many hospital beds are available for patients who need coronary care?

Table 4.2 Average number of public hospital coronary care beds available and open at 9:00 a.m., by month <sup>1</sup>

	Jul-03	Aug-03	Sep-03	Oct-03	Nov-03	Dec-03	Jan-04	Feb-04	Mar-04	Apr-04	May-04	Jun-04	Jul-04	Aug-04	Sep-04
Available	6.7	4.7	5.0	4.1	4.3	9.0	8.6	7.3	6.2	4.9	4.6	5.9	4.9	5.2	3.6
Total open	70.2	69.6	71.0	70.0	70.2	70.4	69.9	69.4	70.7	70.0	69.3	70.7	69.9	69.1	69.7
Available (including Barwon Health)	7.3	5.2	5.5	4.5	4.6	9.2	8.9	7.4	6.5	4.9	4.6	6.2	5.3	5.6	3.8
Total open ICU (incl Barwon Health)	76.2	75.6	77.0	76.0	76.2	76.4	75.9	75.4	76.7	76.0	75.3	76.7	75.9	75.1	75.4

<sup>1</sup> Notes under Table 4.1 apply.

Source: Victorian Adult Emergency Retrieval and Coordination Service.

## How many hospital beds are available for patients who need intensive care?

Table 4.3 Average number of public hospital intensive care beds available and open at 9:00 a.m.,  
by hospital: September quarter 2004 <sup>1</sup>

Hospital	Available <sup>2</sup>	Total open ICU <sup>3</sup>	Total open ICU & HDU <sup>3</sup>
<b>Major metropolitan hospitals</b>			
Angliss Hospital			
Austin Hospital	0.0	11.5	14.4
Box Hill Hospital	0.0	6.1	9.8
Dandenong Hospital	0.0	6.9	6.9
Frankston Hospital	0.1	6.1	7.6
Maroondah Hospital	0.3	3.7	6.7
Monash Medical Centre	0.1	10.9	10.9
Royal Melbourne Hospital	0.1	17.1	21.0
St Vincent's Hospital	0.0	9.5	9.5
The Alfred	0.1	22.2	26.0
The Northern Hospital	0.1	5.6	7.7
Western Hospital	0.3	6.4	9.1
<b>Other hospitals</b>			
Barwon Health	0.5	7.3	12.8
<b>Total <sup>4</sup></b>	<b>1.6</b>	<b>113.2</b>	<b>142.4</b>

<sup>1</sup> Based upon hospital census taken at 9:00 a.m. daily.

<sup>2</sup> Available beds are unoccupied beds which are staffed, functional and available to receive new patients.

<sup>3</sup> Total open beds are all functioning and staffed beds, regardless of whether they are occupied.

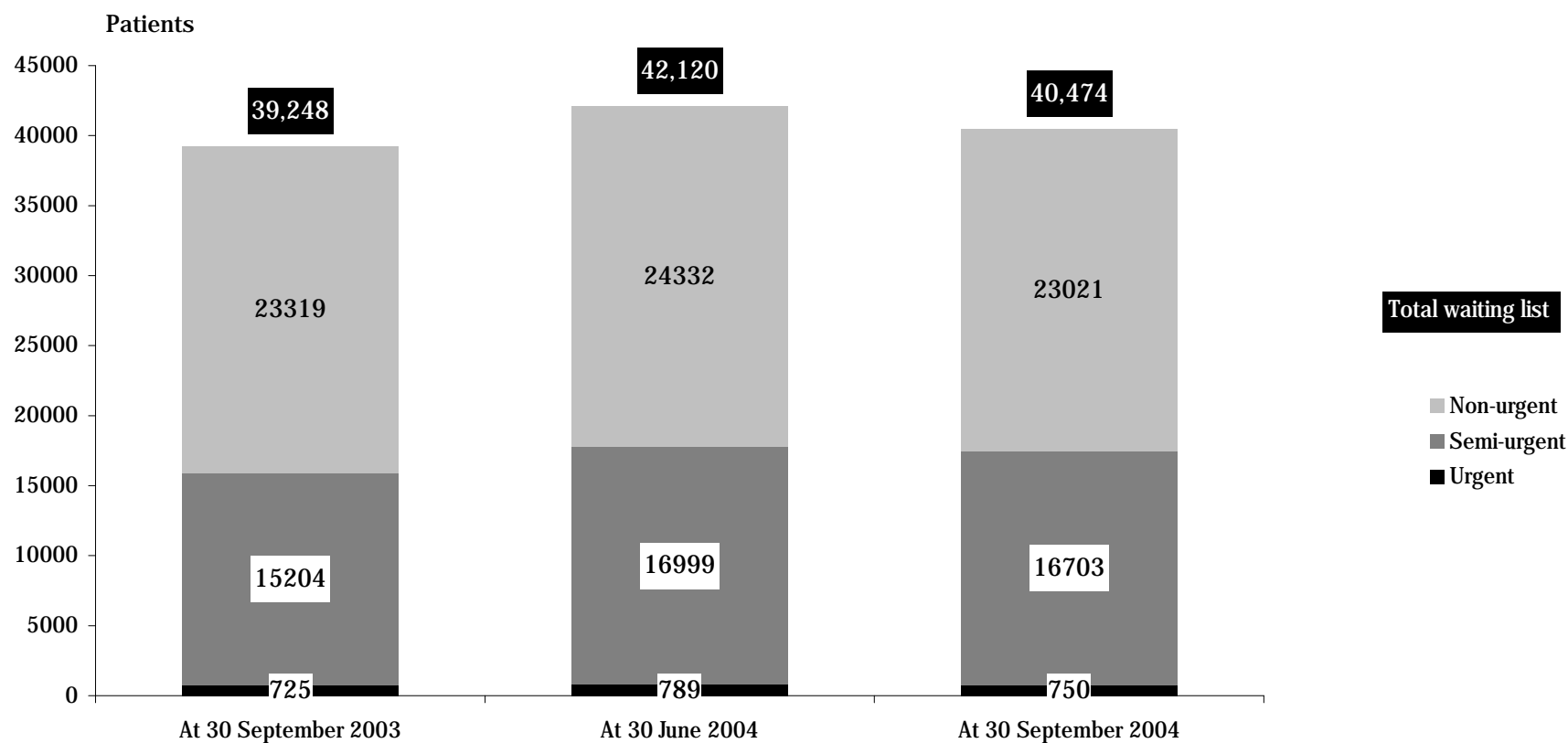
<sup>4</sup> The data in this table represents an average for the quarter and varies from tables 4.1 and 4.2 which are averages for each month.

Source: Victorian Adult Emergency Retrieval and Coordination Service.

## 5. Access to elective surgery

### How many people are on hospital waiting lists for elective surgery?

Fig 5.1 Waiting list by urgency<sup>1 2 3</sup>



<sup>1</sup> Waiting list numbers include all patients booked and waiting for elective surgery, in line with national definitions.

<sup>2</sup> The waiting list patient categories are:

- Urgent cases (waiting list category 1): Admission within 30 days desirable for a condition that has the potential to deteriorate quickly to the point it may become an emergency.
- Semi-urgent cases (waiting list category 2): Admission within 90 days desirable for a condition causing some pain, dysfunction or disability but which is not likely to deteriorate quickly or become an emergency.
- Non-urgent cases (waiting list category 3): Admission at some time in the future acceptable for a condition causing minimal or no pain, dysfunction or disability which is very unlikely to deteriorate quickly and which does not have the potential to become an emergency.

<sup>3</sup> 2003/2004 data are provisional.

Source: Elective surgery information system.

## How many people are on hospital waiting lists for elective surgery?

Table 5.1 Waiting lists by urgency, by individual hospital <sup>1 2 3</sup>

Hospital	Urgent cases			Semi-urgent cases			Non-urgent cases		
	30 Sep 03	30 Jun 04	30 Sep 04	30 Sep 03	30 Jun 04	30 Sep 04	30 Sep 03	30 Jun 04	30 Sep 04
<b>Major metropolitan hospitals</b>									
Angliss Hospital	33	29	30	275	300	298	249	366	302
Austin Hospital	82	50	31	1,188	1,546	1,619	1,125	1,237	1,196
Box Hill Hospital	54	34	41	537	812	752	819	986	952
Dandenong Hospital	51	34	36	1,294	1,587	1,481	1,870	1,913	1,702
Frankston Hospital	61	68	72	1,979	2,132	2,168	754	748	722
Maroondah Hospital	6	32	20	213	290	249	1,158	1,244	1,184
Monash Medical Centre	53	137	117	1,568	1,918	1,970	2,645	2,741	2,547
Royal Melbourne Hospital	37	40	27	992	1,033	1,105	1,486	1,613	1,693
St Vincent's Hospital	47	51	54	864	960	998	707	736	785
Sunshine Hospital	11	13	4	190	188	131	674	819	753
The Alfred	60	54	77	756	820	841	591	452	422
The Northern Hospital	41	33	42	987	869	768	1,915	1,354	1,171
Western Hospital	25	40	20	757	625	531	793	808	685
<b>Other metropolitan hospitals</b>									
Mercy Public Hospital, East Melbourne	5	4	13	80	71	86	229	175	152
Mercy Public Hospital, Werribee	1		1	112	125	159	89	77	96
Royal Children's Hospital	28	28	15	265	264	237	1,470	1,822	1,609
Royal Women's Hospital	9	10	15	134	223	217	157	352	308
Sandringham & District Memorial Hospital	15	11	17	209	213	240	267	244	247
The Royal Victorian Eye & Ear Hospital	14	21	16	429	433	331	1,419	1,828	1,799
Williamstown Hospital	10	5	10	324	203	230	423	388	372

<sup>1</sup> Waiting list numbers include all patients booked and waiting for elective surgery, in line with national definitions.

<sup>2</sup> 2004/2005 data are provisional

<sup>3</sup> Elective surgery data for Mercy Hospitals Inc, East Melbourne; Mercy Hospitals Inc, Werribee; and Williamstown Hospital are only available for 2003/2004. No data were available for FY 2002/2003.

Table 5.1 Waiting lists by urgency, by individual hospital (continued)

Hospital	Urgent cases			Semi-urgent cases			Non-urgent cases		
	30 Sep 03	30 Jun 04	30 Sep 04	30 Sep 03	30 Jun 04	30 Sep 04	30 Sep 03	30 Jun 04	30 Sep 04
<b>Major regional hospitals</b>									
Ballarat Health Services	5	14	13	211	240	221	813	656	603
Barwon Health	12	12	19	714	963	894	1,320	1,482	1,421
Bendigo Health Care Group	24	25	21	422	483	457	647	760	751
Goulburn Valley Health	25	19	19	246	259	314	203	123	140
Latrobe Regional Hospital	10	9	10	134	151	148	594	522	553
<b>Other rural hospitals</b>									
Northeast Health Wangaratta	2	3	4	88	60	54	458	544	521
West Gippsland Healthcare Group	4	13	6	236	231	204	444	342	335
<b>Grand total</b>	<b>725</b>	<b>789</b>	<b>750</b>	<b>15,204</b>	<b>16,999</b>	<b>16,703</b>	<b>23,319</b>	<b>24,332</b>	<b>23,021</b>

Source: Elective surgery information system.

## What is the throughput of people waiting for elective surgery?

Table 5.2 Admissions and cancellations, by individual hospital <sup>1 2 3 4</sup>

Hospital	Patients on waiting lists			Admissions from waiting lists			Patients cancelled <sup>4</sup> from waiting lists		
	at 30 Sep 03	at 30 Jun 04	at 30 Sep 04	30 Sep 03	During the quarter		30 Sep 03	During the quarter	
					30 Jun 04	30 Sep 04		30 Jun 04	30 Sep 04
<b>Major metropolitan hospitals</b>									
Angliss Hospital	557	695	630	785	742	866	73	94	116
Austin Hospital	2,395	2,833	2,846	1,953	1,462	1,805	431	348	386
Box Hill Hospital	1,410	1,832	1,745	1,322	1,164	1,333	279	253	158
Dandenong Hospital	3,215	3,534	3,219	1,556	1,402	1,559	346	209	307
Frankston Hospital	2,794	2,948	2,962	1,497	1,381	1,424	237	332	335
Maroondah Hospital	1,377	1,566	1,453	868	823	993	137	133	230
Monash Medical Centre	4,266	4,796	4,634	2,243	1,743	2,122	330	439	308
Royal Melbourne Hospital	2,515	2,686	2,825	1,660	1,588	1,572	520	350	347
St Vincent's Hospital	1,618	1,747	1,837	1,295	1,180	1,286	174	223	292
Sunshine Hospital	875	1,020	888	1,218	1,087	1,159	112	195	193
The Alfred	1,407	1,326	1,340	1,450	1,328	1,343	431	342	324
The Northern Hospital	2,943	2,256	1,981	1,452	1,795	1,778	233	291	290
Western Hospital	1,575	1,473	1,236	1,048	948	1,158	233	218	247
<b>Other metropolitan hospitals</b>									
Mercy Public Hospital, East Melbourne	314	250	251	357	424	372	34	40	60
Mercy Public Hospital, Werribee	202	202	256	1,082	996	1,057	26	141	7
Royal Children's Hospital	1,763	2,114	1,861	2,545	2,418	2,685	217	164	230
Royal Women's Hospital	300	585	540	845	504	546	168	107	141
Sandringham & District Memorial Hospital	491	468	504	532	597	613	105	99	120
The Royal Victorian Eye & Ear Hospital	1,862	2,282	2,146	2,898	3,002	3,108	210	265	273
Williamstown Hospital	757	596	612	1,219	1,227	1,246	77	125	91

<sup>1</sup> Waiting list numbers include all patients booked and waiting for elective surgery, in line with national definitions.

<sup>2</sup> 2004/2005 data are provisional.

<sup>3</sup> Mercy Hospitals Inc, East Melbourne; Mercy Hospitals Inc, Werribee; and Williamstown Hospital qualified to report elective surgery data from September 2003. No data were available for FY 2002/2003.

<sup>4</sup> Patients removed from the waiting list through a process other than admitted for surgery.

Table 5.2 Admissions and cancellations, by individual hospital (continued)

Hospital	Patients on waiting lists			Admissions from waiting lists			Patients cancelled <sup>4</sup> from waiting lists		
	at 30 Sep 03	at 30 Jun 04	at 30 Sep 04	30 Sep 03	During the quarter		30 Sep 03	During the quarter	
					30 Jun 04	30 Sep 04		30 Jun 04	30 Sep 04
<b>Major regional hospitals</b>									
Ballarat Health Services	1,029	910	837	698	711	808	110	133	121
Barwon Health	2,046	2,457	2,334	1,258	1,001	1,320	137	162	220
Bendigo Health Care Group	1,093	1,268	1,229	1,117	1,058	1,115	204	78	92
Goulburn Valley Health	474	401	473	776	628	705	127	99	91
Latrobe Regional Hospital	738	682	711	1,091	1,025	1,072	68	77	93
<b>Other rural hospitals</b>									
Northeast Health Wangaratta	548	607	579	551	553	613	45	51	52
West Gippsland Healthcare Group	684	586	545	556	510	586	48	139	43
<b>Grand total</b>	<b>39,248</b>	<b>42,120</b>	<b>40,474</b>	<b>33,872</b>	<b>31,297</b>	<b>34,244</b>	<b>5,112</b>	<b>5,107</b>	<b>5,167</b>

Source: Elective surgery information system.

## How may people are on hospital waiting lists for longer than the ideal time?

Table 5.3 People on elective surgery waiting lists for longer than ideal time, by Individual Hospital <sup>1 2 3</sup>

Hospital	Urgent cases waiting over 30 days			Semi-urgent cases waiting over 90 days		
	30 Sep 03	30 Jun 04	30 Sep 04	30 Sep 03	30 Jun 04	30 Sep 04
<b>Major metropolitan hospitals</b>						
Angliss Hospital	0	0	0	1	4	36
Austin Hospital	0	0	0	526	844	968
Box Hill Hospital	0	0	0	85	235	226
Dandenong Hospital	0	0	0	801	1,079	1,053
Frankston Hospital	0	0	0	1,142	1,301	1,261
Maroondah Hospital	0	0	0	66	92	56
Monash Medical Centre	0	0	0	829	1,049	1,052
Royal Melbourne Hospital	0	0	0	469	495	560
St Vincent's Hospital	0	0	0	296	360	390
Sunshine Hospital	0	0	0	17	15	5
The Alfred	0	0	0	314	349	334
The Northern Hospital	0	0	0	404	215	188
Western Hospital	0	1	0	294	295	174
<b>Other metropolitan hospitals</b>						
Mercy Public Hospital, East Melbourne	0	0	0	0	2	4
Mercy Public Hospital, Werribee	0	0	0	24	13	29
Royal Children's Hospital	0	0	0	0	0	0
Royal Women's Hospital	0	0	0	0	0	0
Sandringham & District Memorial Hospital	0	0	0	54	30	31
The Royal Victorian Eye & Ear Hospital	0	0	0	51	24	20
Williamstown Hospital	0	0	0	115	28	46

<sup>1</sup> Waiting list numbers include all patients booked and waiting for elective surgery, in line with national definitions.

<sup>2</sup> 2004/2005 data are provisional.

<sup>3</sup> Elective surgery data for Mercy Hospitals Inc, East Melbourne; Mercy Hospitals Inc, Werribee; and Williamstown Hospital are only available for 2003/2004. No data were available for FY 2002/2003.

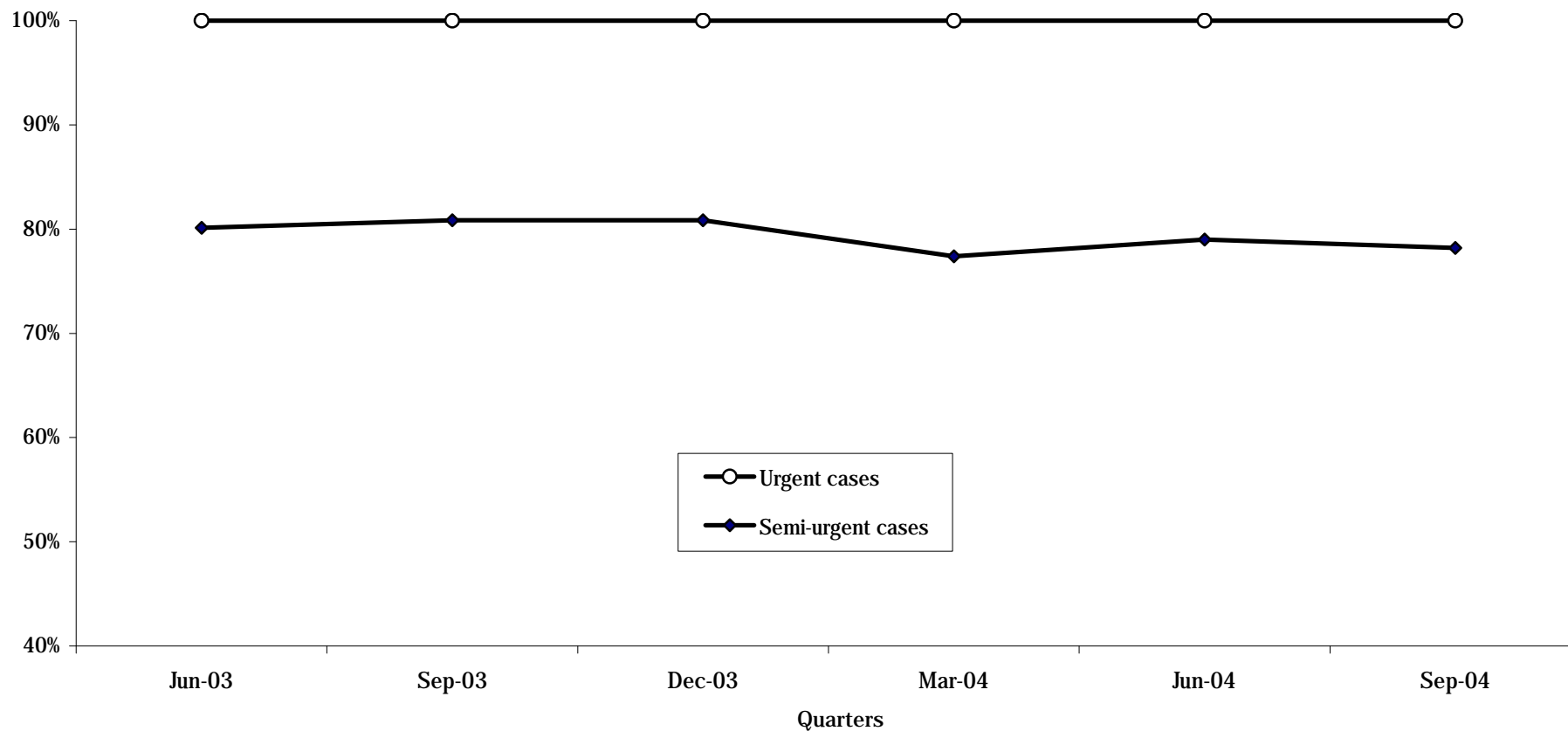
Table 5.3 People on elective surgery waiting lists for longer than ideal time, by individual hospital (continued)

Hospital	Urgent cases waiting over 30 days			Semi-urgent cases waiting over 90 days		
	30 Sep 03	30 Jun 04	30 Sep 04	30 Sep 03	30 Jun 04	30 Sep 04
<b>Major regional hospitals</b>						
Ballarat Health Services	0	0	0	74	78	79
Barwon Health	0	0	0	306	453	419
Bendigo Health Care Group	0	0	0	195	283	281
Goulburn Valley Health	0	0	0	34	45	52
Latrobe Regional Hospital	0	0	0	20	0	5
<b>Other rural hospitals</b>						
Northeast Health Wangaratta	0	0	0	12	3	5
West Gippsland Healthcare Group	0	0	0	63	64	47
<b>Grand total</b>	<b>0</b>	<b>1</b>	<b>0</b>	<b>6,192</b>	<b>7,356</b>	<b>7,321</b>

Source: Elective surgery information system.

## What percentage of patients are admitted within clinically ideal times?

Fig 5.2 Percentage of patients from elective surgery waiting lists who were admitted within the ideal time, by urgency <sup>1</sup>



<sup>1</sup> 2003/2004 data are provisional.

Source: Elective surgery information system.

## What percentage of patients are admitted within clinically ideal times?

Table 5.4 Percentage of people from elective surgery waiting lists who were admitted within the ideal time, by urgency, by individual hospital <sup>1 2</sup>

Hospital	Urgent cases admitted within 30 days during the quarter				Semi-urgent cases admitted within 90 days during the quarter			
	June 2004		September 2004		June 2004		September 2004	
	Numbers	Percentage	Numbers	Percentage	Numbers	Percentage	Numbers	Percentage
<b>Major metropolitan hospitals</b>								
Angliss Hospital	126	100.0%	130	100.0%	371	98.7%	376	88.9%
Austin Hospital	694	100.0%	740	100.0%	341	60.9%	387	54.7%
Box Hill Hospital	304	100.0%	352	100.0%	459	67.0%	464	62.6%
Dandenong Hospital	327	100.0%	358	100.0%	255	56.8%	298	61.6%
Frankston Hospital	348	99.7%	342	100.0%	409	49.3%	432	50.1%
Maroondah Hospital	245	100.0%	303	100.0%	208	77.0%	234	72.0%
Monash Medical Centre	748	100.0%	768	100.0%	478	63.6%	652	64.2%
Royal Melbourne Hospital	724	100.0%	767	100.0%	363	61.9%	389	70.7%
St Vincent's Hospital	299	100.0%	354	100.0%	505	67.4%	502	61.6%
Sunshine Hospital	93	100.0%	88	100.0%	347	91.1%	323	87.5%
The Alfred	509	100.0%	553	100.0%	472	69.3%	449	71.5%
The Northern Hospital	306	100.0%	277	100.0%	642	69.7%	687	74.8%
Western Hospital	253	100.0%	227	100.0%	289	64.9%	397	66.6%
<b>Other metropolitan hospitals</b>								
Mercy Public Hospital, East Melbourne	85	100.0%	87	100.0%	121	97.6%	112	96.6%
Mercy Public Hospital, Werribee	11	100.0%	3	100.0%	660	99.5%	667	99.1%
Royal Children's Hospital	362	100.0%	435	100.0%	592	100.0%	544	100.0%
Royal Women's Hospital	78	100.0%	70	100.0%	337	100.0%	352	100.0%
Sandringham & District Memorial Hospital	119	100.0%	135	100.0%	303	91.3%	300	87.7%
The Royal Victorian Eye & Ear Hospital	197	100.0%	180	100.0%	1,630	96.1%	1,650	97.5%
Williamstown Hospital	90	100.0%	89	100.0%	631	95.9%	659	98.4%

<sup>1</sup> 2004/2005 data are provisional.

<sup>2</sup> Elective surgery data for Mercy Hospitals Inc, East Melbourne; Mercy Hospitals Inc, Werribee; and Williamstown Hospital are only available for 2003/ 2004. No data were available for FY 2002 / 2003.

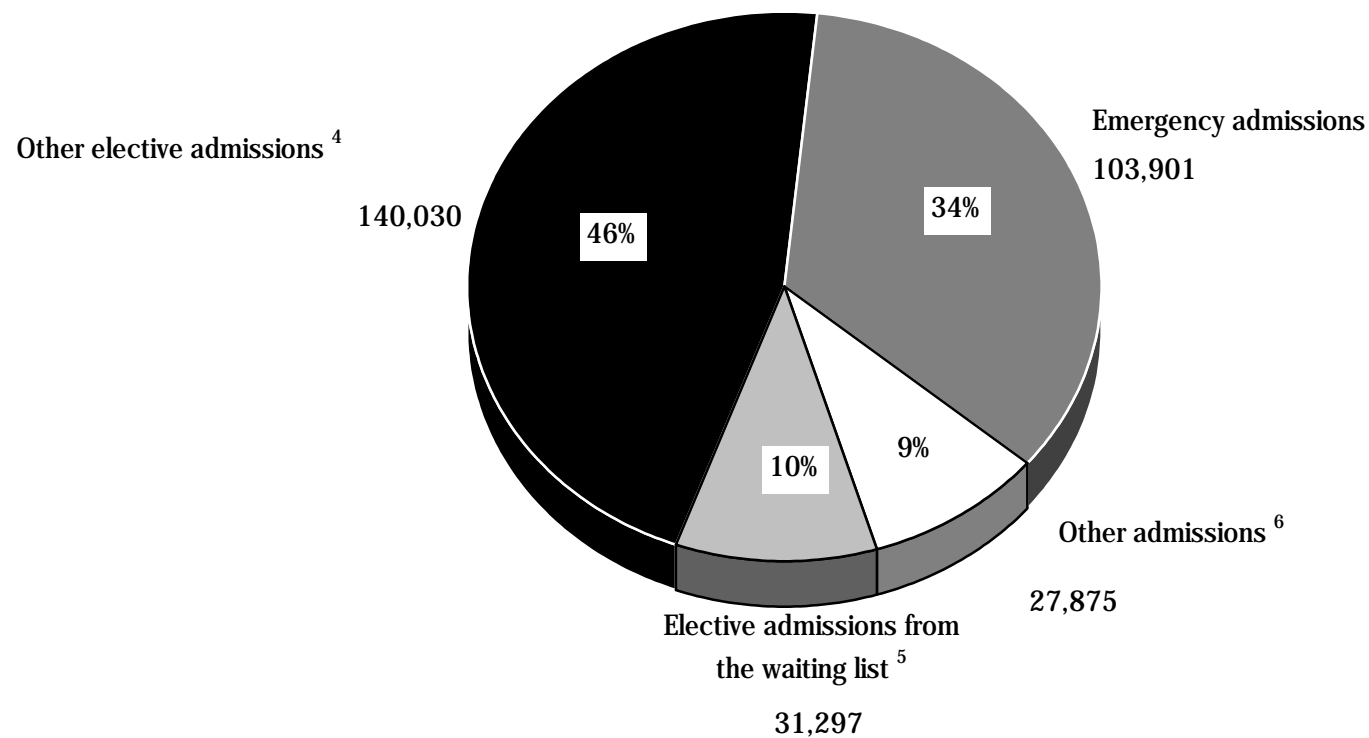
Table 5.4 Percentage of people from elective surgery waiting lists who were admitted within the ideal time, by urgency, by individual hospital (continued)

Hospital	Urgent cases admitted within 30 days during the quarter				Semi-urgent cases admitted within 90 days during the quarter			
	June 2004		September 2004		June 2004		September 2004	
	Numbers	Percentage	Numbers	Percentage	Numbers	Percentage	Numbers	Percentage
<b>Major regional hospitals</b>								
Ballarat Health Services	69	100.0%	79	100.0%	304	88.9%	332	89.2%
Barwon Health	103	99.0%	93	100.0%	421	76.1%	567	73.8%
Bendigo Health Care Group	193	100.0%	205	100.0%	220	67.9%	174	61.1%
Goulburn Valley Health	155	100.0%	178	100.0%	309	86.3%	376	87.6%
Latrobe Regional Hospital	112	100.0%	109	100.0%	381	98.7%	446	98.9%
<b>Other rural hospitals</b>								
Northeast Health Wangaratta	52	100.0%	55	100.0%	206	96.7%	229	97.9%
West Gippsland Healthcare Group	96	100.0%	100	100.0%	189	82.5%	249	84.7%
<b>Grand total</b>	<b>6,698</b>	<b>100.0%</b>	<b>7,077</b>	<b>100.0%</b>	<b>11,443</b>	<b>79.0%</b>	<b>12,247</b>	<b>78.2%</b>

Source: Elective surgery information system.

## What is the admission source of total hospital activity?

Fig 5.3 Separations by admission type: September quarter 2004 <sup>1 2 3</sup>



<sup>1</sup> Percentages may not add to 100% due to rounding.

<sup>2</sup> 2004/05 data are provisional

<sup>3</sup> Data refer to the number of WIES-fundable separations only.

<sup>4</sup> Excludes patients admitted from the elective surgery waiting list.

<sup>5</sup> Patients admitted from the elective surgery waiting list during the quarter (ESIS).

<sup>6</sup> Includes maternity, newborn and statistical (change in patient care type) admissions.

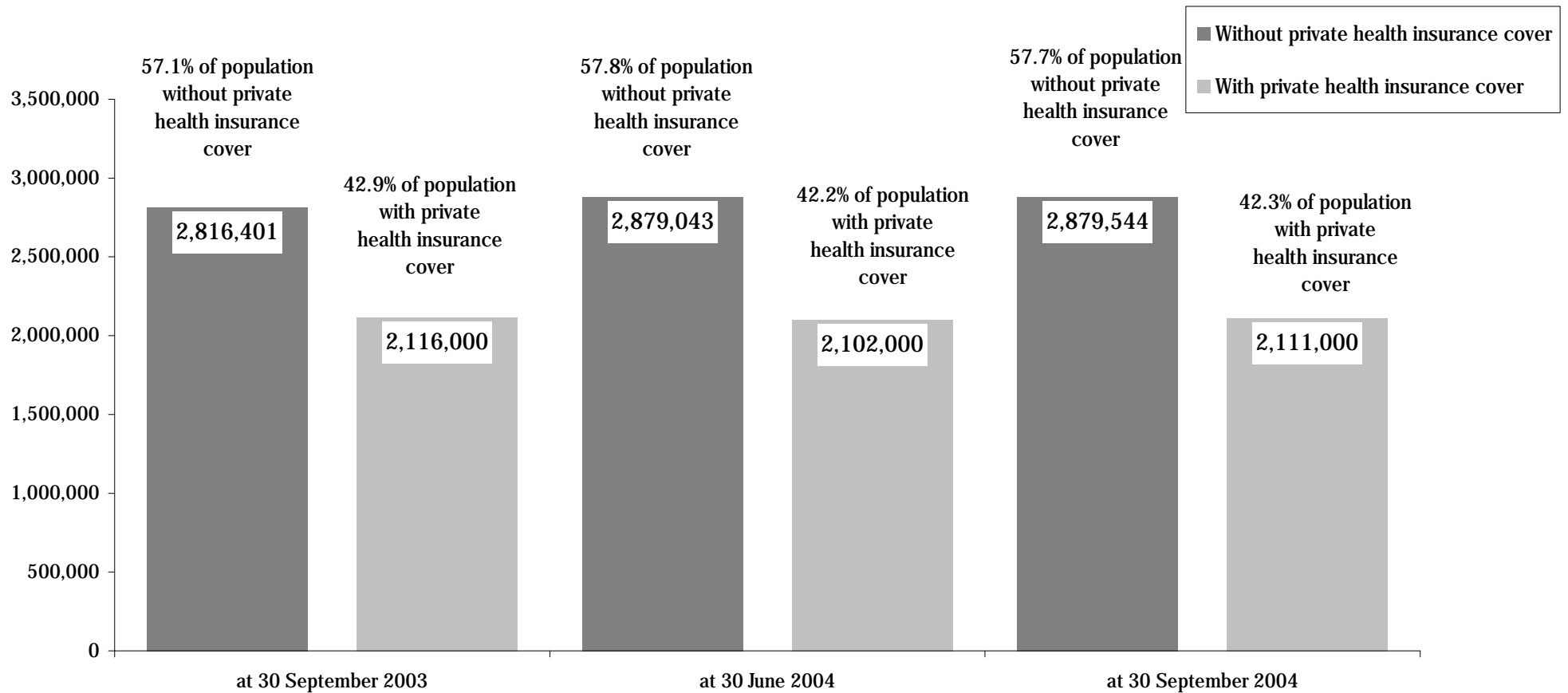
Source: Victorian admitted episode dataset (18 November 2004 update).  
Elective surgery information system.

This page has been left blank intentionally.

## 6. Private health insurance

### How many Victorians have private health insurance hospital cover?

Fig 5.1 Health insurance status of Victorians <sup>1 2 3</sup>



<sup>1</sup> Data are for all people covered by insurance, that is, contributors, partners and dependants.

<sup>2</sup> Data for current and previous quarters are provisional.

<sup>3</sup> Statistics reflect total persons covered by any level of hospital private health insurance.

Source: Private Health Insurance Administration Council (5 October 2004).

This page has been left blank intentionally.

## 7. Glossary

What do the terms used in this report mean?

### Admitted patient

Someone who is an inpatient in a hospital. Sameday patients who are admitted and separated on the same date are also counted as inpatients, but people who attend hospital for outpatient clinics are not.

### Cancellation

The request for elective surgery has been withdrawn and the patient is removed from this hospital's Waiting List without admission for the awaited procedure. This can occur for clinical reasons, transfer of the patient to another hospital, or at the request of the patient.

### Casemix funded

A system of funding hospitals according to the actual number and type of services that they provide. Casemix funding was introduced for most Victorian public hospitals in July 1993.

### Coronary care

A hospital unit with specialised staff and equipment to care for patients with heart disease.

### Elective admission

A planned admission to hospital. Emergency admissions and transfers from other hospitals are not counted as elective admissions.

### Elective surgery

Planned surgery that is not an emergency requiring hospital admission within 24 hours.

### Emergency admission

An unplanned admission to hospital due to unexpected illness or injury that requires urgent care.

### Emergency department

A hospital department that specialises in providing emergency care for people who are in need of urgent care (ambulance cases for example) and people who choose to seek treatment in an emergency department.

### Intensive care

A hospital unit with specialised staff and equipment to provide continuous care for critically ill, injured or post-operative patients.

### Major metropolitan hospitals

Include Angliss Hospital, Austin Hospital (Austin Hospital & Heidelberg Repatriation Hospital), Box Hill Hospital, Dandenong Hospital, Frankston Hospital, Maroondah Hospital, Monash Medical Centre (Clayton Campus & Moorabbin Campus), Royal Melbourne Hospital, St Vincent's Hospital, Sunshine Hospital, The Alfred, The Northern Hospital and Western Hospital.

### Separation

When an admitted patient leaves a hospital. This is the technical way of counting the number of admitted patients treated by a hospital.

### Step down bed

Hospitals with specialised staff and equipment to care for patients who no longer need coronary or intensive care but are not yet ready to move to a general hospital ward.

### Transfer

When an inpatient is moved from one hospital to another. This might be in order to obtain a specialised treatment not available at the first hospital or because of the patient's preferences.

### Waiting list hospital

A major public hospital that performs elective surgery for public patients and uses a waiting list to properly keep track of people who require elective surgery.