

# ***Hospital Services Report***

*September quarter 2001*

## **Notes**

This document contains the most up-to-date information available at the time of preparation.

This *Hospital Services Report* is available on the Department of Human Services Internet site located at:

<http://www.dhs.vic.gov.au/ahs/pub.htm>

Design and production by Department of Human Services, Melbourne, Victoria.

September 2001

© Copyright Department of Human Services 2001.

This publication is copyright. No part may be reproduced by any process except in accordance with the provisions of the *Copyright Act 1968*.

# ***Contents***

<b><i>Introduction</i></b>	<b>1</b>
<b>1. Patients waiting for residential aged care placement</b>	<b>2</b>
<b>2. Hospital admitted patient activity</b>	<b>4</b>
<b>3. Access to emergency services</b>	<b>6</b>
<b>4. Access to critical care services</b>	<b>15</b>
<b>5. Access to elective surgery</b>	<b>17</b>
<b>6. Private health insurance</b>	<b>28</b>
<b>7. Glossary</b>	<b>29</b>

# ***Introduction***

Consumers, health care providers and government all need information on the quality of health services. Public access to information assists consumers to understand the health care system, it assists providers of health services in planning and increases the accountability of the Department of Human Services to the people in the state of Victoria, Australia.

The *Hospital Services Report* was introduced in 1995. This edition includes data for the September quarter 2001, which covers the months of July, August and September.

The information included in this report is often requested from the Department. Since technical information of this nature is very difficult to interpret, each graph and table needs to be carefully considered in the context of the complexity of the health care system. Department staff, hospital staff, general practitioners and other health care professionals may be able to assist you to interpret this report.

A number of graphs and tables refer to major metropolitan hospitals.

The major metropolitan hospitals include:

Angliss Health Service

Austin & Repatriation Medical Centre

- Austin campus

- Repatriation campus

Box Hill Hospital

Dandenong Hospital

Frankston Hospital

Maroondah Hospital

Monash Medical Centre

- Clayton campus

- Moorabbin campus

Royal Melbourne Hospital

St Vincent's Hospital

Sunshine Hospital

The Alfred

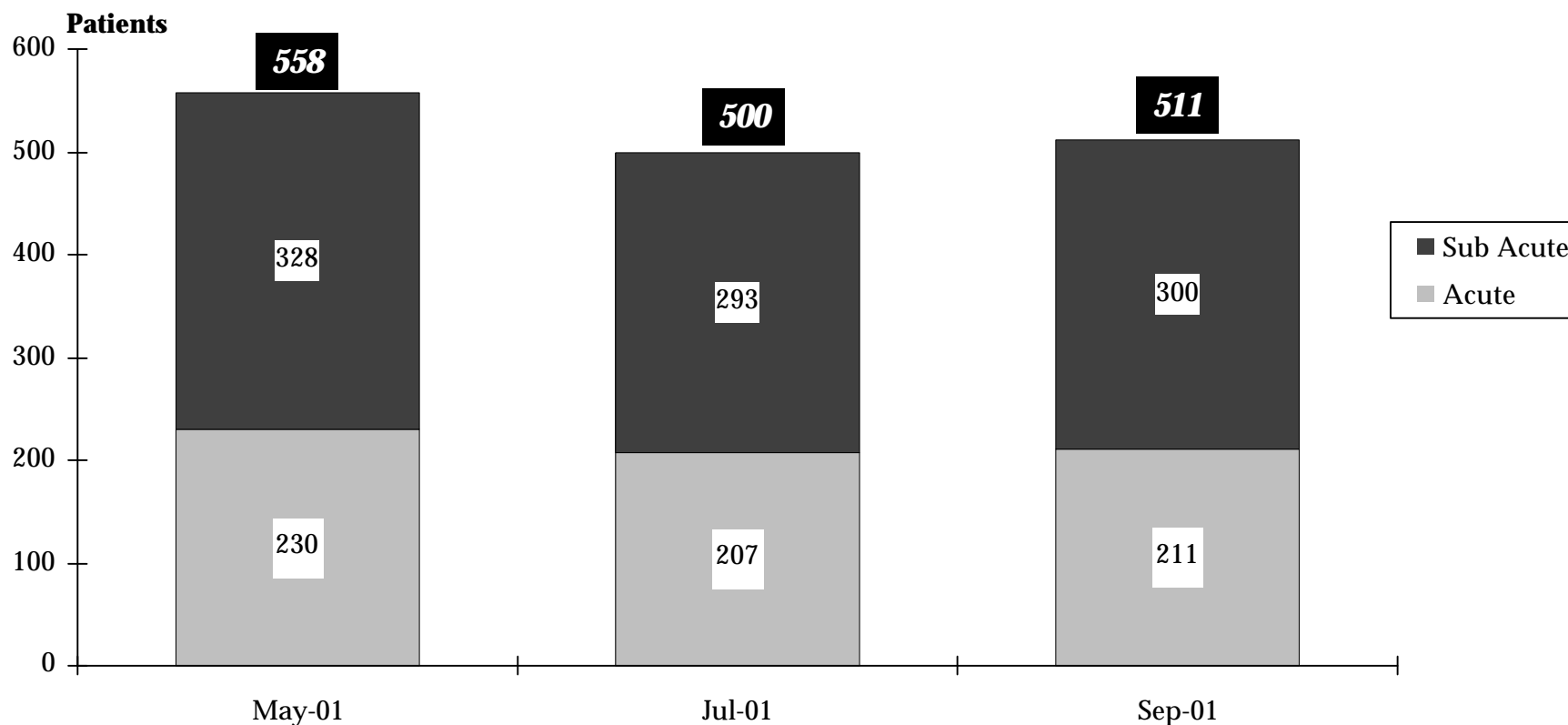
The Northern Hospital

Western Hospital

# 1. Patients waiting for residential aged care placement

## How many patients are waiting for residential aged care placements?

**Figure 1.1 Number of acute and sub acute patients waiting for residential aged care placement <sup>1 2</sup>**



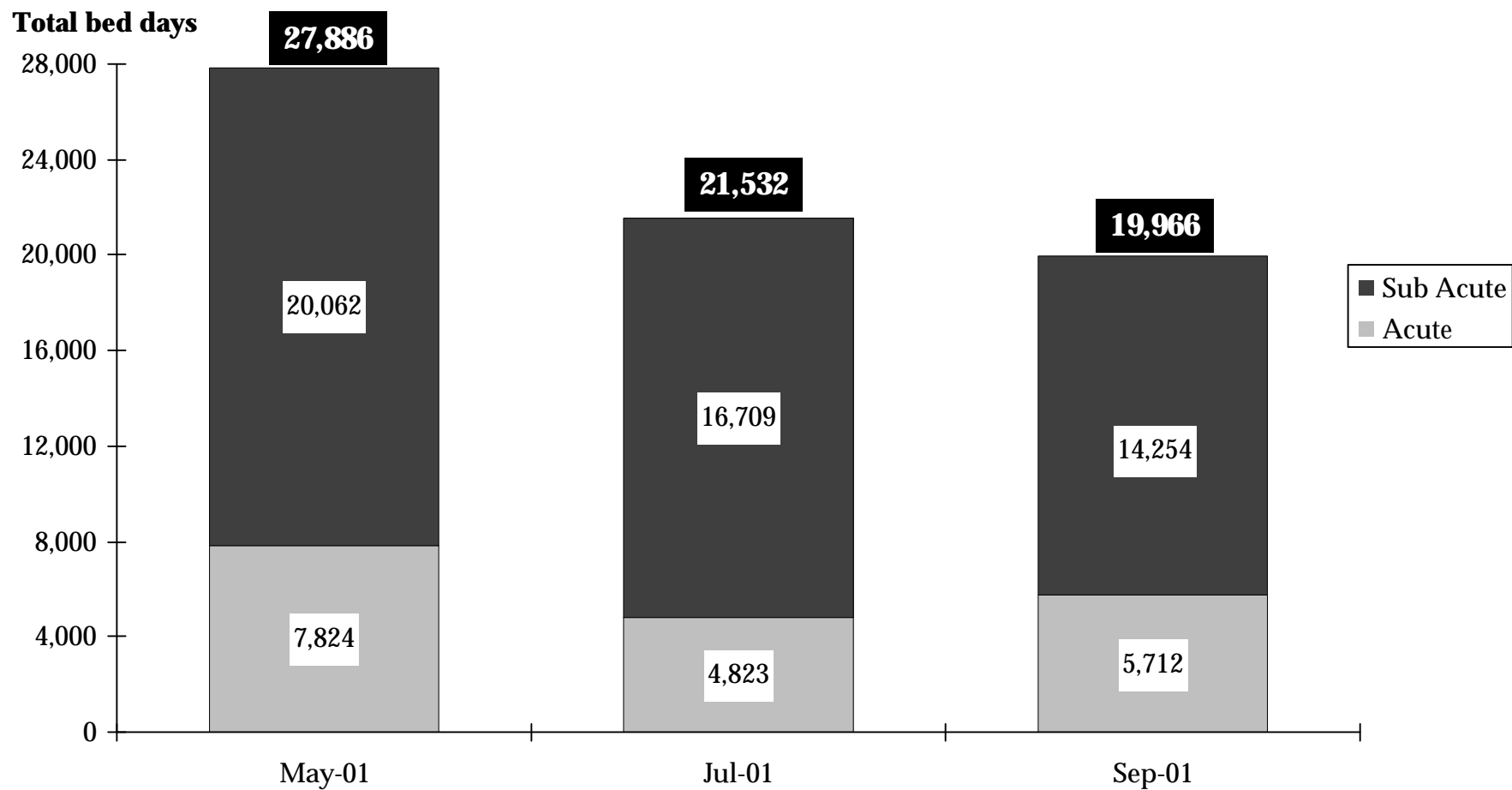
<sup>1</sup> Hospitals reporting sub acute are Angliss, Anne Caudle, Bundoora Extended Care, Bethlehem, Broadmeadows, Caritas Christi, Caulfield General, Dandenong, Goulburn Valley, Grace McKellar, Hampton, Kingston, Latrobe Regional, Maroondah, Mt Eliza, Melbourne Extended Care Rehabilitation Service, Peter James, Queen Elizabeth Centre, Royal Talbot, St George's, Sunshine and Williamstown.

<sup>2</sup> Hospitals reporting acute are The Alfred, Angliss, Austin & Repatriation, Ballarat, Barwon Health, Bendigo, Box Hill, Dandenong, Frankston, Goulburn Valley, Latrobe Regional, Maroondah, Monash Medical Centre (Clayton & Moorabbin), The Northern, Rosebud, Royal Melbourne, Sandringham, St Vincent's, Sunshine, Western and Williamstown.

Source: Bi-monthly Bed Census.

## How many bed days are spent waiting for residential aged care placements?

**Figure 1.2 Number of bed days patients wait for residential aged care placement <sup>1</sup>**



<sup>1</sup> Notes for Figure 1.1 apply.  
Source: Bi-monthly Bed Census.

## 2. Hospital Admitted Patient Activity

### How many patients are admitted to hospital?

**Table 2.1 Admitted patients by individual hospital**<sup>1 2 3</sup>

Hospital	September quarter 2000	June quarter 2001	September quarter 2001	% Change September 2000 to September 2001
<b>Major metropolitan hospitals</b> <sup>4</sup>				
Angliss Health Service	5,810	5,733	5,971	2.8%
Austin & Repatriation Medical Centre	15,625	16,007	17,044	9.1%
Box Hill Hospital	9,174	8,958	9,288	1.2%
Dandenong Hospital	7,068	7,112	6,610	-6.5%
Frankston Hospital	9,183	9,964	10,261	11.7%
Maroondah Hospital	3,893	4,394	4,442	14.1%
Monash Medical Centre	18,775	19,749	19,781	5.4%
Royal Melbourne Hospital	17,006	17,972	18,577	9.2%
St Vincent's Hospital	10,711	10,873	10,863	1.4%
Sunshine Hospital <sup>5</sup>	4,300	4,263	5,828	35.5%
The Alfred	11,749	13,353	13,696	16.6%
The Northern Hospital	6,230	6,456	6,666	7.0%
Western Hospital	8,446	8,748	7,359	-12.9%
<b>Other metropolitan hospitals</b>				
Caulfield General Medical Centre	386	460	427	10.6%
Mercy Public Hospital, East Melbourne	5,175	4,599	4,717	-8.9%
Peter MacCallum Cancer Institute	3,153	3,587	3,446	9.3%
Royal Children's Hospital	7,817	7,188	7,425	-5.0%
Royal Women's Hospital	7,223	6,765	6,680	-7.5%
Sandringham & District Memorial Hospital	3,213	3,592	3,639	13.3%
The Royal Victorian Eye and Ear Hospital	3,221	3,199	3,332	3.4%
Other metropolitan hospitals	10,338	11,357	11,912	15.2%

<sup>1</sup> Data refer to the number of 'separations' (ie. the number of patients that have been discharged from hospital).

<sup>2</sup> 2000/2001 data are provisional.

<sup>3</sup> Data for September 2000 have been amended to include all WIES-fundable separations.

<sup>4</sup> Major metropolitan hospitals contain the campuses listed in the Introduction.

<sup>5</sup> Change in activity is as a result of the opening of new beds since 2 July 2001.

**Table 2.1 Admitted patients by individual hospital (continued)**

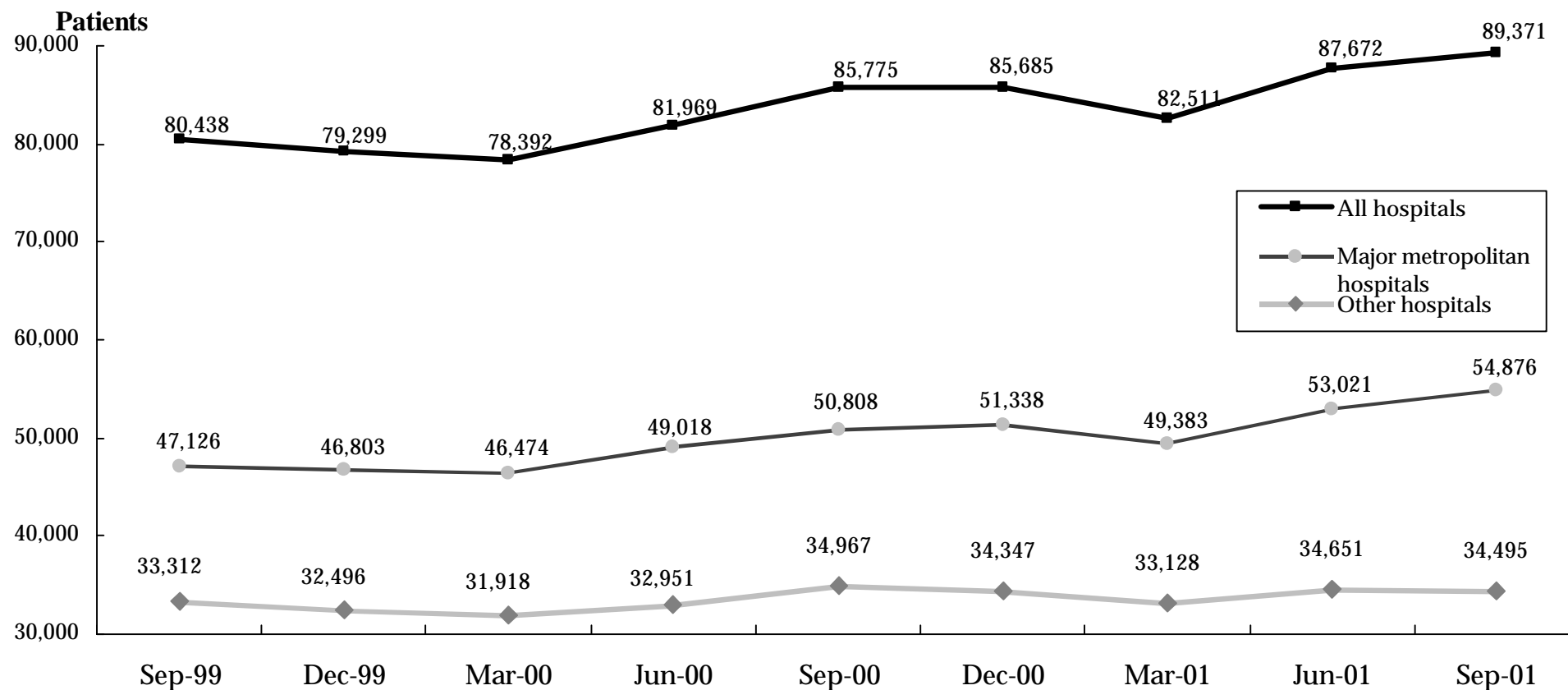
Hospital	September quarter 2000	June quarter 2001	September quarter 2001	% Change September 2000 to September 2001
<b>Major regional hospitals</b>				
Ballarat Health Services	5,737	5,964	6,221	8.4%
Barwon Health	11,464	12,000	12,001	4.7%
Bendigo Health Care Group	5,273	5,312	5,233	-0.8%
Goulburn Valley Health	4,559	4,369	4,449	-2.4%
Latrobe Regional Hospital	5,118	5,417	5,348	4.5%
<b>Other rural hospitals</b>				
Central Gippsland Health Service	2,382	2,380	2,601	9.2%
South West Healthcare	3,526	3,377	3,494	-0.9%
Wangaratta District Base Hospital	2,580	3,229	2,969	15.1%
Wimmera Health Care Group	2,283	2,226	2,214	-3.0%
Wodonga Regional Health Service	3,850	3,535	4,124	7.1%
Other rural hospitals	35,943	35,660	35,010	-2.6%
<b>Total all public hospitals</b>	<b>251,211</b>	<b>257,798</b>	<b>261,628</b>	<b>4.1%</b>

Source: Victorian Admitted Episode Dataset (21 November 2001 update).

### 3. Access to Emergency Services

#### How many emergency patients are admitted to hospital?

**Figure 3.1 Patients admitted to public hospitals requiring emergency care**<sup>1 2</sup>



<sup>1</sup> Major metropolitan hospitals contain the campuses listed in the Introduction.

<sup>2</sup> September quarter 2001 data are provisional.

## How many emergency patients are admitted to hospital?

**Table 3.1 Emergency admissions**<sup>1 2</sup>

Hospital	September quarter 2000	June quarter 2001	September quarter 2001	% Change June 2001 to September 2001	% Change September 2000 to September 2001
<b>Major metropolitan hospitals</b> <sup>3</sup>					
Angliss Health Services	2,155	2,211	2,482	12.3%	15.2%
Austin and Repatriation Medical Centre	4,044	3,925	4,324	10.2%	6.9%
Box Hill Hospital	4,057	3,976	4,259	7.1%	5.0%
Dandenong Hospital	4,715	4,436	4,137	-6.7%	-12.3%
Frankston Hospital	4,684	5,298	5,512	4.0%	17.7%
Maroondah Hospital	2,022	2,564	2,669	4.1%	32.0%
Monash Medical Centre	6,727	6,692	6,723	0.5%	-0.1%
Royal Melbourne Hospital	5,443	5,749	5,628	-2.1%	3.4%
St Vincent's Hospital	3,538	3,525	3,558	0.9%	0.6%
Sunshine Hospital <sup>4</sup>	1,055	1,119	2,350	110.0%	122.7%
The Alfred	4,364	5,331	5,775	8.3%	32.3%
The Northern Hospital	2,973	3,313	3,477	5.0%	17.0%
Western Hospital	5,031	4,882	3,982	-18.4%	-20.9%
<b>Major hospitals total</b>	<b>50,808</b>	<b>53,021</b>	<b>54,876</b>	<b>3.5%</b>	<b>8.0%</b>
<b>Other hospitals total</b>	<b>34,967</b>	<b>34,651</b>	<b>34,495</b>	<b>-0.5%</b>	<b>-1.3%</b>
<b>Grand total</b>	<b>85,775</b>	<b>87,672</b>	<b>89,371</b>	<b>1.9%</b>	<b>4.2%</b>

<sup>1</sup> Data exclude elective, maternity, newborn and statistical admissions.

<sup>2</sup> Data refer to the number of 'separations' (ie. the number of patients that have been discharged from hospital).

<sup>3</sup> Major metropolitan hospitals contain the campuses listed in the Introduction.

<sup>4</sup> Changes in activity reflect the opening of an adult emergency department on 2 July 2001.

Source: Victorian Admitted Episode Dataset (21 November 2001 update).

## How many patients are treated in each hospital emergency department?

**Table 3.2 Patients treated in hospital emergency departments, by Individual Hospitals**<sup>1 2</sup>

Hospital	September quarter 2000	June quarter 2001	September quarter 2001	% Change September 2000 to September 2001
<b>Major metropolitan hospitals</b> <sup>3</sup>				
Angliss Health Services	7,429	8,263	8,413	13.2%
Austin and Repatriation Medical Centre	8,930	8,801	8,908	-0.2%
Box Hill Hospital	8,732	8,671	8,987	2.9%
Dandenong Hospital	9,545	9,721	10,211	7.0%
Frankston Hospital	9,030	9,617	9,880	9.4%
Maroondah Hospital	7,018	7,414	7,410	5.6%
Monash Medical Centre	12,351	12,385	12,577	1.8%
Royal Melbourne Hospital	10,690	11,038	11,021	3.1%
St Vincent's Hospital	7,527	7,418	7,552	0.3%
Sunshine Hospital <sup>4</sup>	-	-	10,162	n.a.
The Alfred	9,328	9,066	8,795	-5.7%
The Northern Hospital	9,980	10,738	10,522	5.4%
Western Hospital	9,103	10,210	8,150	-10.5%
<b>Other metropolitan hospitals</b>				
Royal Children's Hospital	14,717	13,868	14,671	-0.3%
<b>Major regional hospitals</b>				
Ballarat Health Services	7,068	7,584	7,639	8.1%
Barwon Health	9,039	8,279	9,224	2.0%
Bendigo Health Care Group	8,125	7,936	8,363	2.9%
Goulburn Valley Health	5,893	6,603	6,440	9.3%
Latrobe Regional Hospital	6,460	6,707	6,791	5.1%
<b>Total</b>	<b>160,965</b>	<b>164,319</b>	<b>175,716</b>	<b>9.2%</b>

<sup>1</sup> Data include all emergency department patients, that is, they include patients who are subsequently admitted to hospital and patients who are treated in the emergency department without being admitted to hospital.

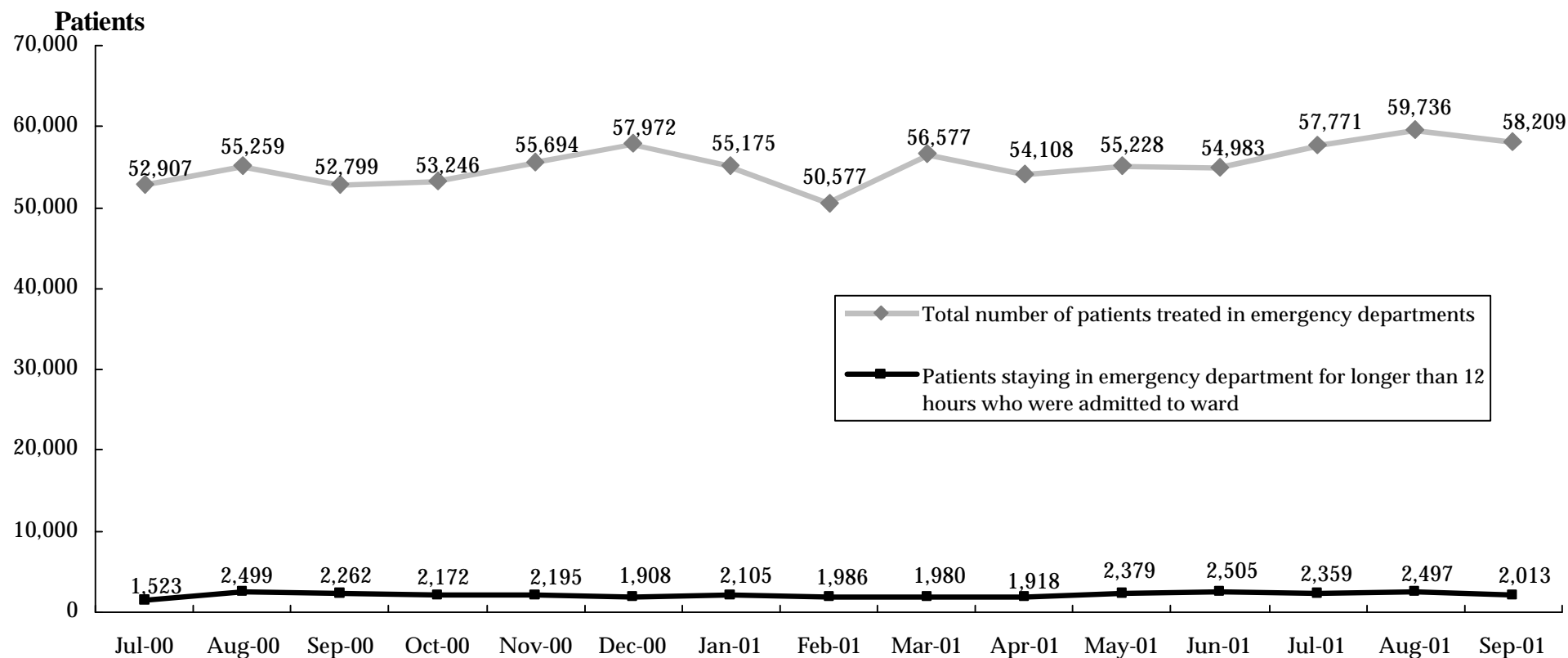
<sup>2</sup> September quarter 2001 data are provisional.

<sup>3</sup> Major metropolitan hospitals contain the campuses listed in the Introduction.

<sup>4</sup> Sunshine Hospital commenced reporting to the Victorian Emergency Minimum Dataset from July 2001.

## How many patients stay for an extended period in the emergency department?

**Figure 3.2 Patients staying in emergency departments for over 12 hours while waiting for a hospital bed** <sup>1 2 3</sup>



<sup>1</sup> The period of 'stay' is calculated from the time the patient arrives in the emergency department to the time when the patient leaves the emergency department.

<sup>2</sup> Patients treated in DHS sponsored Chest Pain Evaluation Area Pilots are excluded from these figures – up to 30 June 2001.

<sup>3</sup> September quarter 2001 data are provisional.

Source: Victorian Emergency Minimum Dataset.

**Table 3.3 Patients staying in selected public hospital emergency departments for over 12 hours while waiting for a hospital bed<sup>1 2 3 4</sup>**

Hospital	September quarter 2000		June quarter 2001		September quarter 2001	
	Numbers	Percentage	Numbers	Percentage	Numbers	Percentage
<b>Major metropolitan hospitals<sup>5</sup></b>						
Angliss Health Services	126	7.2%	184	13.8%	132	9.0%
Austin and Repatriation Medical Centre	523	19.7%	660	26.7%	817	31.7%
Box Hill Hospital	335	14.5%	366	15.7%	592	23.4%
Dandenong Hospital	420	18.7%	503	23.5%	472	21.0%
Frankston Hospital	559	22.4%	714	26.7%	717	24.1%
Maroondah Hospital	305	23.8%	316	23.2%	389	25.7%
Monash Medical Centre	950	32.3%	716	24.0%	980	32.2%
Royal Melbourne Hospital	774	28.8%	1,066	40.3%	951	34.2%
St Vincent's Hospital	567	30.4%	645	34.0%	199	9.6%
Sunshine Hospital <sup>6</sup>	-	n.a.	-	n.a.	16	1.2%
The Alfred	662	30.9%	721	35.4%	773	40.7%
The Northern Hospital	591	31.6%	682	34.8%	608	29.5%
Western Hospital	372	12.6%	153	5.1%	71	2.9%
<b>Other metropolitan hospitals</b>						
Royal Children's Hospital	0	0.0%	1	0.0%	28	1.3%
<b>Major regional hospitals</b>						
Ballarat Health Services	0	0.0%	0	0.0%	0	0.0%
Barwon Health	99	3.3%	67	2.1%	96	2.6%
Bendigo Health Care Group	0	0.0%	0	0.0%	0	0.0%
Goulburn Valley Health	0	0.0%	0	0.0%	0	0.0%
Latrobe Regional Hospital	1	0.1%	8	0.7%	28	2.7%
<b>Total</b>	<b>6,284</b>	<b>16.0%</b>	<b>6,802</b>	<b>17.8%</b>	<b>6,869</b>	<b>16.9%</b>

<sup>1</sup> The period of 'stay' is calculated from the time the patient arrives in the emergency department to the time when the patient leaves the emergency department.

<sup>2</sup> Patients treated in DHS sponsored Chest Pain Evaluation Area Pilots are excluded from these figures – up to 30 June 2001.

<sup>3</sup> Percentage data represent the number of emergency department patients admitted to ward who spend more than 12 hours in the emergency department prior to being admitted as a proportion of all emergency department patients admitted to ward.

<sup>4</sup> September quarter 2001 data are provisional.

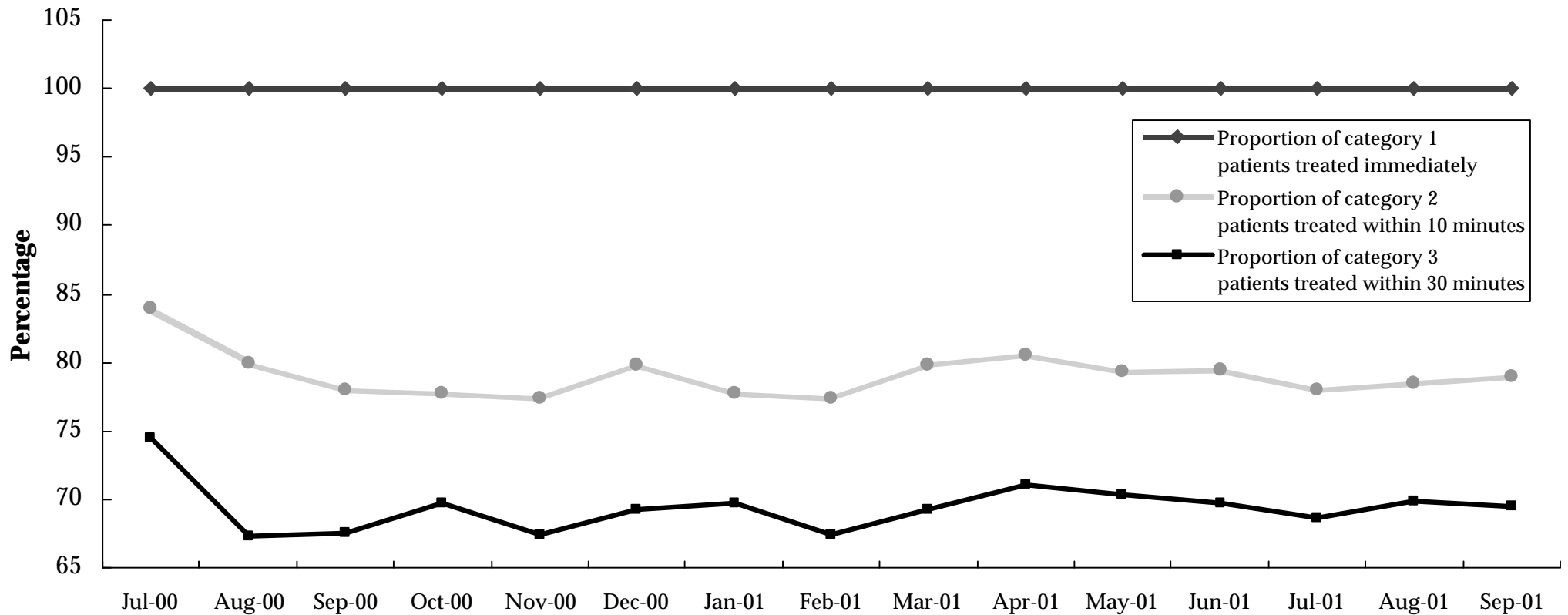
<sup>5</sup> Major metropolitan hospitals contain the campuses listed in the Introduction.

<sup>6</sup> Sunshine Hospital commenced reporting to the Victorian Emergency Minimum Dataset from July 2001.

Source: Victorian Emergency Minimum Dataset.

## How many emergency department patients are treated within ideal time?

Figure 3.3 Emergency department achievement of ACEM waiting times by triage category<sup>1 2</sup>



<sup>1</sup> Waiting times are calculated as the time between presentation at the emergency department and commencement of treatment. The following Australasian College for Emergency Medicine (ACEM) patient categories and recommended treatment times are used:

Category 1: Resuscitation case requiring immediate treatment, for example, major trauma, cardiac arrest, unconsciousness, shock.

Category 2: Emergency case requiring treatment within 10 minutes, for example, severe trauma, chest pain, severe pain, severe breathing difficulty.

Category 3: Urgent case requiring treatment within 30 minutes, for example, moderate trauma, infection, breathing difficulty.

<sup>2</sup> September quarter 2001 data are provisional.

## How many emergency department patients are treated within ideal time?

**Table 3.4 Patients treated in selected public hospital emergency departments in triage category 1, 2 or 3 within ACEM recommended waiting times: September quarter 2001<sup>1,2</sup>**

Hospital	Triage Category 1		Triage Category 2		Triage Category 3	
	Total patients	Treated immediately	Total patients	Treated in 10 minutes	Total patients	Treated in 30 minutes
<b>Major metropolitan hospitals<sup>3</sup></b>						
Angliss Health Services	31	100%	559	83%	2,217	77%
Austin and Repatriation Medical Centre	116	100%	767	73%	3,060	58%
Box Hill Hospital	117	100%	411	84%	3,604	52%
Dandenong Hospital	113	100%	927	73%	3,067	61%
Frankston Hospital	113	100%	1,622	81%	4,214	60%
Maroondah Hospital	70	100%	436	83%	2,303	61%
Monash Medical Centre	258	100%	1,648	81%	4,165	72%
Royal Melbourne Hospital	178	100%	1,312	76%	3,470	74%
St Vincent's Hospital	109	100%	594	74%	2,995	74%
Sunshine Hospital <sup>4</sup>	15	100%	389	68%	2,766	69%
The Alfred	307	100%	1,104	74%	3,250	73%
The Northern Hospital	135	100%	682	73%	3,658	61%
Western Hospital	122	100%	788	87%	2,802	85%
<b>Other metropolitan hospitals</b>						
Royal Children's Hospital	27	100%	244	81%	3,269	75%
<b>Major regional hospitals</b>						
Ballarat Health Services	61	100%	244	84%	1,467	89%
Barwon Health	60	100%	900	73%	2,825	67%
Bendigo Health Care Group	24	100%	575	87%	2,509	77%
Goulburn Valley Health	21	100%	305	81%	1,936	80%
New Latrobe Regional Hospital	46	100%	369	91%	1,545	81%
<b>Total</b>	<b>1,923</b>	<b>100%</b>	<b>13,876</b>	<b>79%</b>	<b>55,122</b>	<b>69%</b>

<sup>1</sup> Australasian College for Emergency Medicine (ACEM).

<sup>2</sup> September quarter 2001 data are provisional.

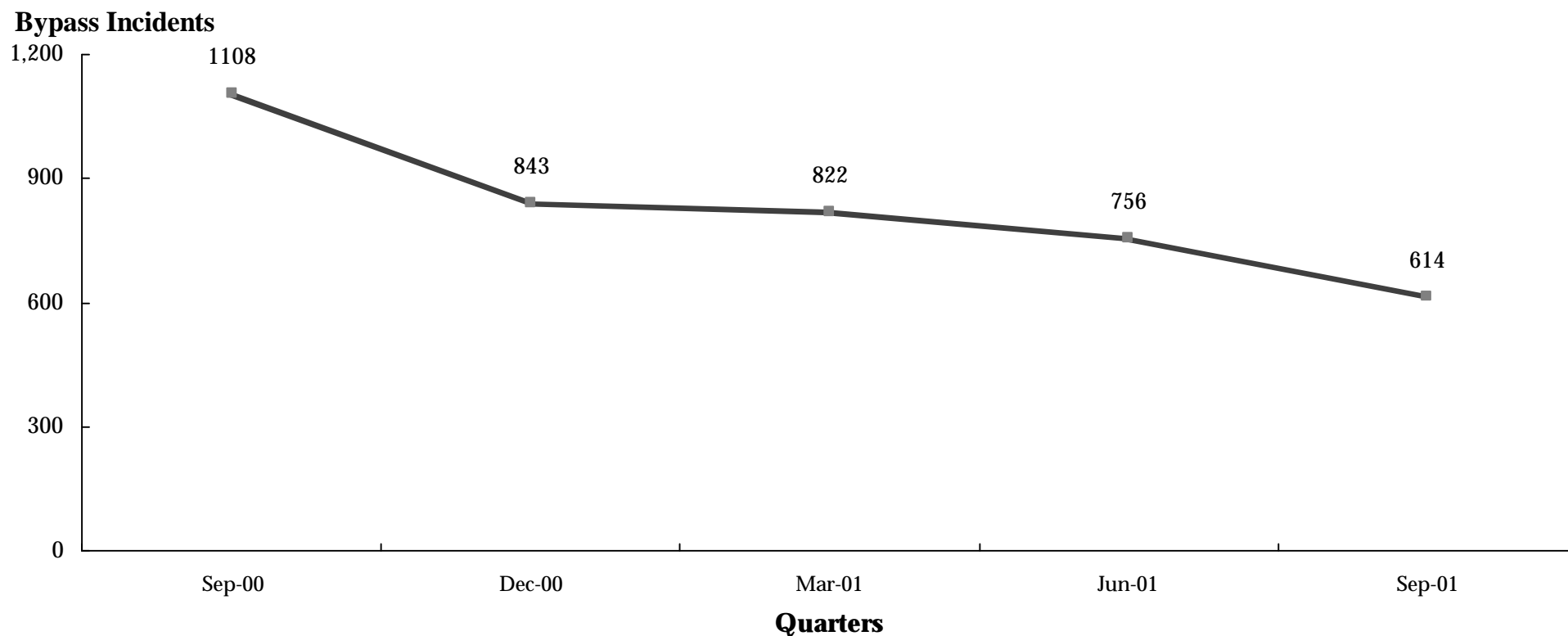
<sup>3</sup> Major metropolitan hospitals contain the campuses listed in the Introduction.

<sup>4</sup> Sunshine Hospital commenced reporting to the Victorian Emergency Minimum Dataset from July 2001.

Source: Victorian Emergency Minimum Dataset.

## How often do hospital emergency departments go on 'bypass'?

**Figure 3.4 Periods of ambulance bypass of public hospitals <sup>1 2</sup>**



<sup>1</sup> Hospital emergency departments can request to go on ambulance bypass when the emergency department has reached maximum capacity and the treatment of patients already in the emergency department could be significantly compromised with the arrival, by ambulance, of further patients. Each individual period of ambulance bypass is for two hours or less.

<sup>2</sup> Bypass policy allows for critically ill or injured patients to be taken to the nearest hospital emergency department regardless of bypass status.

Source: Metropolitan Ambulance Service.

## How often do hospital emergency departments go on 'bypass'?

**Table 3.5 Periods of ambulance bypass, by Individual Hospital**<sup>1 2</sup>

Hospital	Jul-00	Aug-00	Sep-00	Total Sep-00 Qtr	Oct-00	Nov-00	Dec-00	Total Dec-00 Qtr	Jan-01	Feb-01	Mar-01	Total Mar-01 Qtr	Apr-01	May-01	Jun-01	Total Jun-01 Qtr	Jul-01	Aug-01	Sep-01	Total Sep-01 Qtr
<b>Major metropolitan hospitals</b> <sup>3</sup>																				
Angliss Health Services	6	12	5	<b>23</b>	8	12	1	<b>21</b>	2	2	2	<b>6</b>	2	5	14	<b>21</b>	3	1	5	<b>9</b>
Austin & Repatriation Medical Centre	4	45	30	<b>79</b>	13	19	12	<b>44</b>	23	29	8	<b>60</b>	16	11	24	<b>51</b>	21	19	8	<b>48</b>
Box Hill Hospital	2	27	15	<b>44</b>	21	9	17	<b>47</b>	17	11	11	<b>39</b>	17	16	12	<b>45</b>	18	12	12	<b>42</b>
Dandenong Hospital	7	24	50	<b>81</b>	27	14	19	<b>60</b>	11	36	19	<b>66</b>	16	15	18	<b>49</b>	7	12	6	<b>25</b>
Frankston Hospital	24	77	68	<b>169</b>	50	40	20	<b>110</b>	18	28	39	<b>85</b>	17	31	8	<b>56</b>	13	23	33	<b>69</b>
Maroondah Hospital	9	40	44	<b>93</b>	13	23	42	<b>78</b>	17	18	23	<b>58</b>	22	21	33	<b>76</b>	24	20	13	<b>57</b>
Monash Medical Centre	10	42	59	<b>111</b>	53	43	15	<b>111</b>	47	64	12	<b>123</b>	27	36	48	<b>111</b>	18	15	21	<b>54</b>
Royal Melbourne Hospital	46	94	42	<b>182</b>	69	46	47	<b>162</b>	46	36	51	<b>133</b>	45	56	72	<b>173</b>	52	64	21	<b>137</b>
St Vincent's Hospital	12	31	21	<b>64</b>	7	15	16	<b>38</b>	15	11	13	<b>39</b>	28	20	14	<b>62</b>	11	16	7	<b>34</b>
Sunshine Hospital <sup>4</sup>	-	-	-	<b>n.a.</b>	-	-	-	<b>n.a.</b>	-	-	-	<b>n.a.</b>	-	-	-	<b>n.a.</b>	0	0	0	<b>0</b>
The Alfred	15	39	23	<b>77</b>	38	46	29	<b>113</b>	16	42	16	<b>74</b>	13	12	5	<b>30</b>	19	17	38	<b>74</b>
The Northern Hospital	9	75	60	<b>144</b>	24	13	8	<b>45</b>	42	34	32	<b>108</b>	32	6	30	<b>68</b>	32	23	7	<b>62</b>
Western Hospital	20	18	3	<b>41</b>	2	6	6	<b>14</b>	11	10	10	<b>31</b>	0	11	3	<b>14</b>	1	2	0	<b>3</b>
<b>Total</b>	164	524	420	<b>1,108</b>	325	286	232	<b>843</b>	265	321	236	<b>822</b>	235	240	281	<b>756</b>	219	224	171	<b>614</b>

<sup>1</sup> Hospital emergency departments are bypassed by ambulances when the emergency department has reached maximum capacity and the treatment of patients already in the emergency department could be significantly compromised by the ambulance arrival of an additional patient requiring emergency treatment. Each individual period of ambulance bypass is for two hours or less.

<sup>2</sup> Metropolitan Ambulance Service (MAS) response times are now being reported in MAS Response Report: A Quarterly Statistical Review of MAS, Melbourne. Copies of the Response Report can be obtained from MAS, Corporate Planning and Corporate Communications Unit, phone (03) 9840 3648.

<sup>3</sup> Major metropolitan hospitals contain the campuses listed in the Introduction.

<sup>4</sup> Sunshine Hospital commenced reporting to the Victorian Emergency Minimum Dataset from July 2001.

Source: Metropolitan Ambulance Service and, due to ambulance industrial dispute in May and June 2001, included the Metropolitan Health Services.

## 4. Access to Critical Care Services

### How many hospital beds are available for patients who need intensive care?

**Table 4.1 Average number of public hospital intensive care beds available and open at 9.00a.m., by Month<sup>1 2</sup>**

	Jul-00	Aug-00	Sep-00	Oct-00	Nov-00	Dec-00	Jan-01	Feb-01	Mar-01	Apr-01	May-01	Jun-01	Jul-01	Aug-01	Sep-01
Available <sup>3</sup>	3.6	2.2	2.3	3.0	3.5	4.2	4.4	3.9	4.2	4.6	2.9	4.9	2.3	3.2	2.8
Total Open <sup>4</sup>	92.0	92.5	97.0	98.9	100.4	98.4	103.1	104.7	105.9	105.8	107.8	105.6	105.3	102.8	104.4

<sup>1</sup> Based upon hospital census taken at 9.00a.m. daily.

<sup>2</sup> The data in this table represents an average for each month and varies from Table 4.3 which gives averages for the quarter.

<sup>3</sup> Available beds are unoccupied beds which are staffed, functional and available to receive new patients.

<sup>4</sup> Total open beds are all functioning and staffed beds, regardless of whether they are occupied.

Cardio thoracic beds at Royal Melbourne Hospital and The Alfred have been included in total open beds since November 2000.

Source: Office of the Coordinator of Emergency and Critical Care Services.

### How many hospital beds are available for patients who need coronary care?

**Table 4.2 Average number of public hospital coronary care beds available and open at 9.00a.m., by Month<sup>1</sup>**

	Jul-00	Aug-00	Sep-00	Oct-00	Nov-00	Dec-00	Jan-01	Feb-01	Mar-01	Apr-01	May-01	Jun-01	Jul-01	Aug-01	Sep-01
Available	4.0	3.1	4.5	4.6	3.7	7.1	7.0	7.7	7.8	7.4	6.4	6.5	5.3	4.0	6.0
Total Open	73.0	71.5	69.5	68.3	70.2	71.2	71.9	71.4	74.9	73.3	72.3	72.9	71.8	72.6	73.2

<sup>1</sup> Notes under Table 4.1 apply.

Source: Office of the Coordinator of Emergency and Critical Care Services.

## How many hospital beds are available for patients who need intensive care?

**Table 4.3 Average number of public hospital intensive care beds available and open at 9.00a.m., by Hospital <sup>1</sup>**

Hospital	September quarter 2001	
	Available <sup>2</sup>	Total Open <sup>3</sup>
<b>Major metropolitan hospitals <sup>4</sup></b>		
Austin and Repatriation Medical Centre	-	11.5
Box Hill Hospital	0.2	6.0
Dandenong Hospital	0.3	6.6
Frankston Hospital	0.4	5.8
Maroondah Hospital	0.3	3.8
Monash Medical Centre	0.2	9.6
Northern Hospital	0.2	6.2
Royal Melbourne Hospital	0.1	16.2
St Vincent's Hospital	0.0	9.4
Sunshine Hospital	0.2	0.1
The Alfred	0.5	21.1
Western Hospital	0.3	7.7
<b>Total <sup>5</sup></b>	<b>2.8</b>	<b>104.2</b>

<sup>1</sup> Based upon hospital census taken at 9.00a.m. daily.

<sup>2</sup> Available beds are unoccupied beds which are staffed, functional and available to receive new patients.

<sup>3</sup> Total open beds are all functioning and staffed beds, regardless of whether they are occupied.  
Cardio thoracic beds at Royal Melbourne Hospital and The Alfred have been included in total open beds since November 2000.

<sup>4</sup> Major metropolitan hospitals contain the campuses listed in the Introduction.

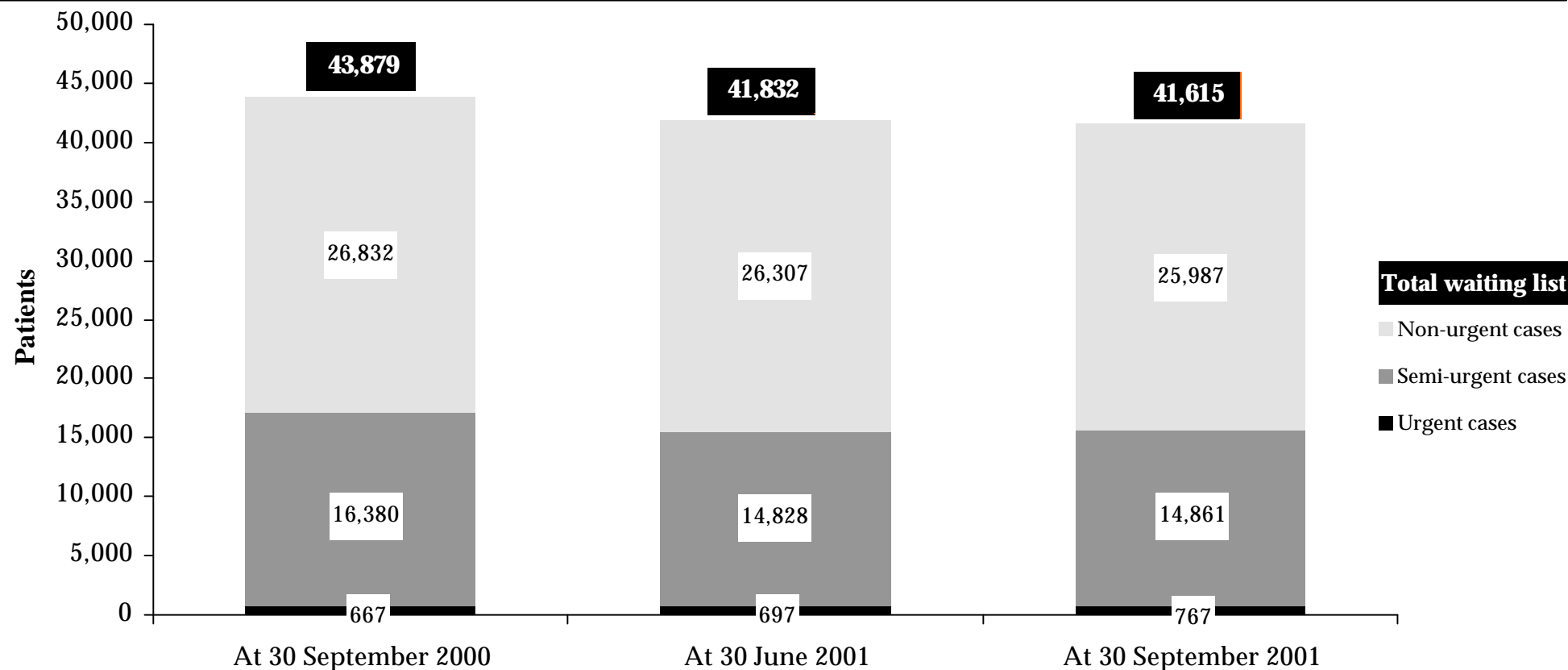
<sup>5</sup> The data in this table represents an average for the quarter and varies from tables 4.1 and 4.2 which are averages for each month.

Source: Office of the Coordinator of Emergency and Critical Care Services.

## 5. Access To Elective Surgery

### How many people are on hospital waiting lists for elective surgery?

Figure 5.1 Waiting list by urgency<sup>1 2 3 4</sup>



<sup>1</sup> Waiting list numbers include all patients booked and waiting for elective surgery, in line with national definitions.

<sup>2</sup> The waiting list patient categories are:

- Urgent cases (waiting list category 1): Admission within 30 days desirable for a condition that has the potential to deteriorate quickly to the point that it may become an emergency.
- Semi-urgent cases (waiting list category 2): Admission within 90 days desirable for a condition causing some pain, dysfunction or disability but which is not likely to deteriorate quickly or become an emergency.
- Non-urgent cases (waiting list category 3): Admission at some time in the future acceptable for a condition causing minimal or no pain, dysfunction or disability which is very unlikely to deteriorate quickly and which does not have the potential to become an emergency.

<sup>3</sup> September quarter 2000 and June quarter 2001 data have been amended from the previous reports.

<sup>4</sup> September quarter 2001 data are provisional.

## How many people are on hospital waiting lists for elective surgery?

**Table 5.1 Waiting lists by Urgency, by Individual Hospital<sup>1 2 3</sup>**

Hospital	Urgent cases			Semi-urgent cases			Non-urgent cases		
	30 Sep 2000	30 Jun 2001	30 Sep 2001	30 Sep 2000	30 Jun 2001	30 Sep 2001	30 Sep 2000	30 Jun 2001	30 Sep 2001
<b>Major metropolitan hospitals<sup>4</sup></b>									
Angliss Health Services	27	21	18	206	191	209	285	229	215
Austin and Repatriation Medical Centre	62	51	48	1,026	1,219	1,255	1,353	1,400	1,270
Box Hill Hospital	36	25	40	512	507	504	710	712	645
Dandenong Hospital	35	29	48	590	704	766	1,787	1,730	1,867
Frankston Hospital	43	57	62	1,952	1,686	1,919	1,976	1,534	1,285
Maroondah Hospital	13	13	8	223	267	232	992	631	580
Monash Medical Centre	88	90	87	829	950	1,000	3,020	2,776	2,863
Royal Melbourne Hospital	72	55	98	866	908	1,011	2,070	1,787	1,822
St Vincent's Hospital	36	46	41	1,053	1,182	1,054	783	822	671
Sunshine Hospital	2	3	8	66	60	147	341	266	449
The Alfred	92	87	77	2,080	1,937	1,680	1,930	1,541	1,443
The Northern Hospital	21	26	46	899	949	965	2,410	2,091	2,074
Western Hospital	24	24	33	776	714	795	1,175	921	1,002
<b>Other metropolitan hospitals</b>									
Royal Children's Hospital	20	20	21	230	175	177	1,103	1,117	1,091
Royal Women's Hospital	34	29	29	210	190	239	565	461	375
Sandringham & District Memorial Hospital	8	6	4	157	199	194	794	539	443
The Royal Victorian Eye and Ear Hospital	0	21	18	2,849	1,162	854	135	1,998	2,314

<sup>1</sup> Waiting list numbers include all patients booked and waiting for elective surgery, in line with national definitions.

<sup>2</sup> September quarter 2000 and June quarter 2001 data have been amended from the previous reports.

<sup>3</sup> September quarter 2001 data are provisional.

<sup>4</sup> Major metropolitan hospitals contain the campuses listed in the Introduction.

**Table 5.1 Waiting lists by Urgency, by Individual Hospital (continued)**

Hospital	Urgent cases			Semi-urgent cases			Non-urgent cases		
	30 Sep 2000	30 Jun 2001	30 Sep 2001	30 Sep 2000	30 Jun 2001	30 Sep 2001	30 Sep 2000	30 Jun 2001	30 Sep 2001
<b>Major regional hospitals</b>									
Ballarat Health Services	2	0	3	371	304	293	1,364	1,174	1,209
Barwon Health	15	12	11	559	544	612	1,777	1,922	1,988
Bendigo Health Care Group	9	11	18	286	426	411	759	774	761
Goulburn Valley Health	22	18	22	190	162	141	336	320	189
New Latrobe Regional Hospital	0	22	13	65	139	109	641	656	633
<b>Other rural hospitals</b>									
Wangaratta District Base Hospital	0	11	2	317	97	111	91	274	279
West Gippsland Hospital <sup>6</sup>	6	20	12	68	156	183	435	632	519
<b>Total</b>	<b>667</b>	<b>697</b>	<b>767</b>	<b>16,380</b>	<b>14,828</b>	<b>14,861</b>	<b>26,832</b>	<b>26,307</b>	<b>25,987</b>

Source: Elective Surgery Information System.

## What is the throughput of people waiting for elective surgery?

**Table 5.2 Admissions and cancellations, by Individual Hospital<sup>1 2 3</sup>**

Hospital	Patients on Waiting Lists			Admissions from Waiting Lists			Patients Cancelled from Waiting Lists		
	at 30 Sep 2000	at 30 Jun 2001	at 30 Sep 2001	During the Quarter			During the Quarter		
				Sep-00	Jun-01	Sep-01	Sep-00	Jun-01	Sep-01
<b>Major metropolitan hospitals<sup>4</sup></b>									
Angliss Health Services	518	441	442	828	698	650	72	66	50
Austin and Repatriation Medical Centre	2,441	2,670	2,573	1,870	1,838	1,866	323	311	437
Box Hill Hospital	1,258	1,244	1,189	1,219	1,368	1,254	192	203	187
Dandenong Hospital	2,412	2,463	2,681	573	985	968	257	547	223
Frankston Hospital	3,971	3,277	3,266	1,076	1,373	1,246	401	615	466
Maroondah Hospital	1,228	911	820	848	832	770	218	145	187
Monash Medical Centre	3,937	3,816	3,950	2,166	2,388	2,227	485	709	401
Royal Melbourne Hospital	3,008	2,750	2,931	1,707	1,817	1,618	397	432	382
St Vincent's Hospital	1,872	2,050	1,766	1,298	1,365	1,445	323	278	476
Sunshine Hospital	409	329	604	672	684	906	125	122	167
The Alfred	4,102	3,565	3,200	1,319	1,690	1,760	224	415	455
The Northern Hospital	3,330	3,066	3,085	991	1,142	1,152	228	295	301
Western Hospital	1,975	1,659	1,830	1,162	1,323	1,007	259	391	444
<b>Other metropolitan hospitals</b>									
Royal Children's Hospital	1,353	1,312	1,289	2,705	2,558	2,667	309	237	254
Royal Women's Hospital	809	680	643	965	820	796	174	242	262
Sandringham & District Memorial Hospital	959	744	641	613	627	596	205	226	168
The Royal Victorian Eye and Ear Hospital	2,984	3,181	3,186	2,798	2,770	2,871	272	376	327

<sup>1</sup> Waiting list numbers include all patients booked and waiting for elective surgery, in line with national definitions.

<sup>2</sup> September quarter 2000 and June quarter 2001 data have been amended from the previous reports.

<sup>3</sup> September quarter 2001 data are provisional.

<sup>4</sup> Major metropolitan hospitals contain the campuses listed in the Introduction.

**Table 5.2 Admissions and cancellations, by Individual Hospital (continued)**

Hospital	Patients on Waiting Lists			Admissions from Waiting Lists			Patients Cancelled from Waiting Lists		
	at 30 Sep 2000	at 30 Jun 2001	at 30 Sep 2001	During the Quarter			During the Quarter		
				Sep-00	Jun-01	Sep-01	Sep-00	Jun-01	Sep-01
<b>Major regional hospitals</b>									
Ballarat Health Services	1,737	1,478	1,505	633	683	703	149	249	95
Barwon Health	2,351	2,478	2,611	952	858	798	199	247	195
Bendigo Health Care Group	1,054	1,211	1,190	672	643	653	129	105	128
Goulburn Valley Health	548	500	352	610	628	623	87	86	93
New Latrobe Regional Hospital	706	817	755	1,031	1,092	1,013	47	82	61
<b>Other rural hospitals</b>									
Wangaratta District Base Hospital	408	382	392	510	619	569	46	51	63
West Gippsland Hospital <sup>5</sup>	509	808	714	515	539	558	92	81	117
<b>Total</b>	<b>43,879</b>	<b>41,832</b>	<b>41,615</b>	<b>27,733</b>	<b>29,340</b>	<b>28,716</b>	<b>5,213</b>	<b>6,511</b>	<b>5,939</b>

Source: Elective Surgery Information System.

## How many people are on hospital waiting lists for longer than the ideal time?

**Table 5.3 People on elective surgery waiting lists for longer than ideal time, by Individual Hospital <sup>1 2 3</sup>**

Hospital	Urgent cases waiting over 30 days			Semi-urgent cases waiting over 90 days		
	30 Sep 2000	30 Jun 2001	30 Sep 2001	30 Sep 2000	30 Jun 2001	30 Sep 2001
<b>Major metropolitan hospitals <sup>4</sup></b>						
Angliss Health Services	0	0	0	2	0	0
Austin & Repatriation Medical Centre	0	0	0	408	590	569
Box Hill Hospital	0	0	0	53	112	99
Dandenong Hospital	0	0	0	285	347	455
Frankston Hospital	0	0	0	1,137	892	1,067
Maroondah Hospital	0	0	0	33	59	52
Monash Medical Centre	1	0	0	276	356	362
Royal Melbourne Hospital	0	0	0	343	427	484
St Vincent's Hospital	0	0	0	497	636	504
Sunshine Hospital	0	0	0	21	11	27
The Alfred	0	0	0	1,349	1,350	1,201
The Northern Hospital	0	0	0	427	457	438
Western Hospital	0	0	0	306	286	343
<b>Other metropolitan hospitals</b>						
Royal Children's Hospital	0	0	0	3	0	0
Royal Women's Hospital	0	0	0	0	0	0
Sandringham & District Memorial Hospital	0	0	0	45	94	57
The Royal Victorian Eye and Ear Hospital	0	0	0	1,280	405	279

<sup>1</sup> Waiting list numbers include all patients booked and waiting for elective surgery, in line with national definitions.

<sup>2</sup> September quarter 2000 and June quarter 2001 data have been amended from the previous reports.

<sup>3</sup> September quarter 2001 data are provisional.

<sup>4</sup> Major metropolitan hospitals contain the campuses listed in the Introduction.

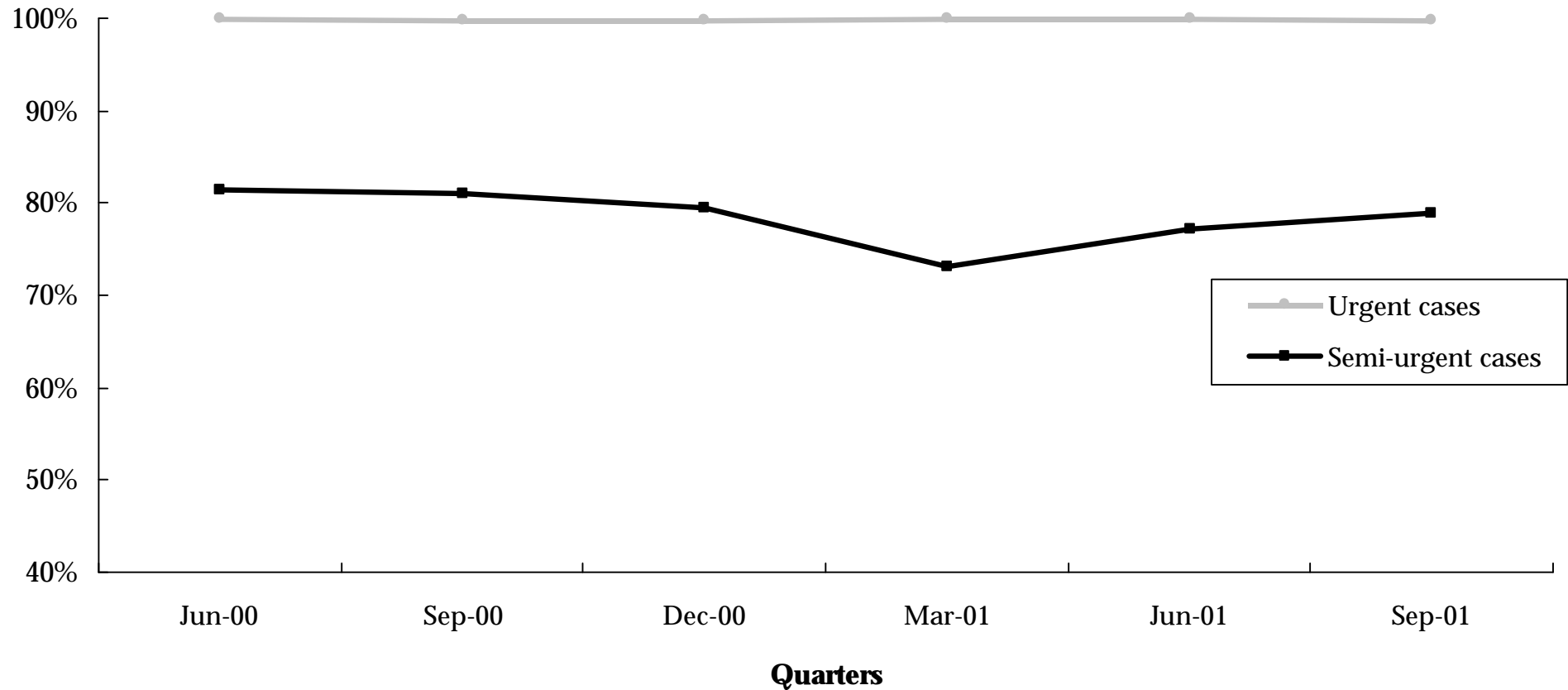
**Table 5.3 People on elective surgery waiting lists for longer than ideal time, by Individual Hospital (continued)**

Hospital	Urgent cases waiting over 30 days			Semi-urgent cases waiting over 90 days		
	30 Sep 2000	30 Jun 2001	30 Sep 2001	30 Sep 2000	30 Jun 2001	30 Sep 2001
<b>Major regional hospitals</b>						
Ballarat Health Services	0	0	0	147	121	102
Barwon Health	0	0	0	93	180	254
Bendigo Health Care Group	0	0	0	113	191	240
Goulburn Valley Health	0	0	0	19	0	4
New Latrobe Regional Hospital	0	0	0	1	7	2
<b>Other rural hospitals</b>						
Wangaratta District Base Hospital	0	0	0	98	20	13
West Gippsland Hospital	0	1	0	5	16	39
<b>Total</b>	<b>1</b>	<b>1</b>	<b>0</b>	<b>6,941</b>	<b>6,557</b>	<b>6,591</b>

Source: Elective Surgery Information System.

## What percentage of patients are admitted within clinically ideal times?

Figure 5.2 Percentage of patients from elective surgery waiting lists who were admitted within the ideal time, by Urgency<sup>1 2</sup>



<sup>1</sup> September quarter 2000 and June quarter 2001 data have been amended from the previous reports.

<sup>2</sup> September quarter 2001 data are provisional.

## What percentage of patients are admitted within clinically ideal times?

**Table 5.4 Percentage of people from elective surgery waiting lists who were admitted within the ideal time, by Urgency, by Individual Hospital<sup>1 2</sup>**

Hospital	Urgent cases admitted within 30 days during the quarter				Semi-urgent cases admitted within 90 days during the quarter			
	June 2001		September 2001		June 2001		September 2001	
	Number	Percentage	Number	Percentage	Number	Percentage	Number	Percentage
<b>Major metropolitan hospitals<sup>3</sup></b>								
Angliss Health Services	87	100.0%	94	100.0%	325	99.7%	350	100.0%
Austin & Repatriation Medical Centre	528	100.0%	509	100.0%	684	76.0%	756	77.3%
Box Hill Hospital	243	100.0%	315	100.0%	690	83.3%	545	79.6%
Dandenong Hospital	315	100.0%	305	100.0%	183	49.3%	208	67.3%
Frankston Hospital	355	100.0%	332	99.4%	315	45.1%	376	62.1%
Maroondah Hospital	152	100.0%	142	100.0%	251	77.5%	230	77.4%
Monash Medical Centre	668	100.0%	621	100.0%	542	72.8%	657	76.3%
Royal Melbourne Hospital	588	100.0%	616	100.0%	536	79.1%	455	74.6%
St Vincent's Hospital	302	100.0%	301	100.0%	692	74.5%	673	70.4%
Sunshine Hospital	26	100.0%	60	100.0%	157	95.2%	234	90.0%
The Alfred	605	100.0%	663	100.0%	520	62.9%	531	61.7%
The Northern Hospital	221	100.0%	210	100.0%	494	72.8%	520	74.7%
Western Hospital	231	100.0%	264	100.0%	562	76.0%	397	76.3%
<b>Other metropolitan hospitals</b>								
Royal Children's Hospital	367	100.0%	338	100.0%	485	100.0%	499	100.0%
Royal Women's Hospital	178	100.0%	166	100.0%	414	100.0%	408	99.8%
Sandringham & District Memorial Hospital	75	100.0%	83	100.0%	292	90.7%	294	91.6%
The Royal Victorian Eye and Ear Hospital <sup>5</sup>	131	100.0%	128	100.0%	1,439	72.6%	1,413	79.1%

<sup>1</sup> September quarter 2000 and June quarter 2001 data have been amended from the previous reports.

<sup>2</sup> September quarter 2001 data are provisional.

<sup>3</sup> Major metropolitan hospitals contain the campuses listed in the Introduction.

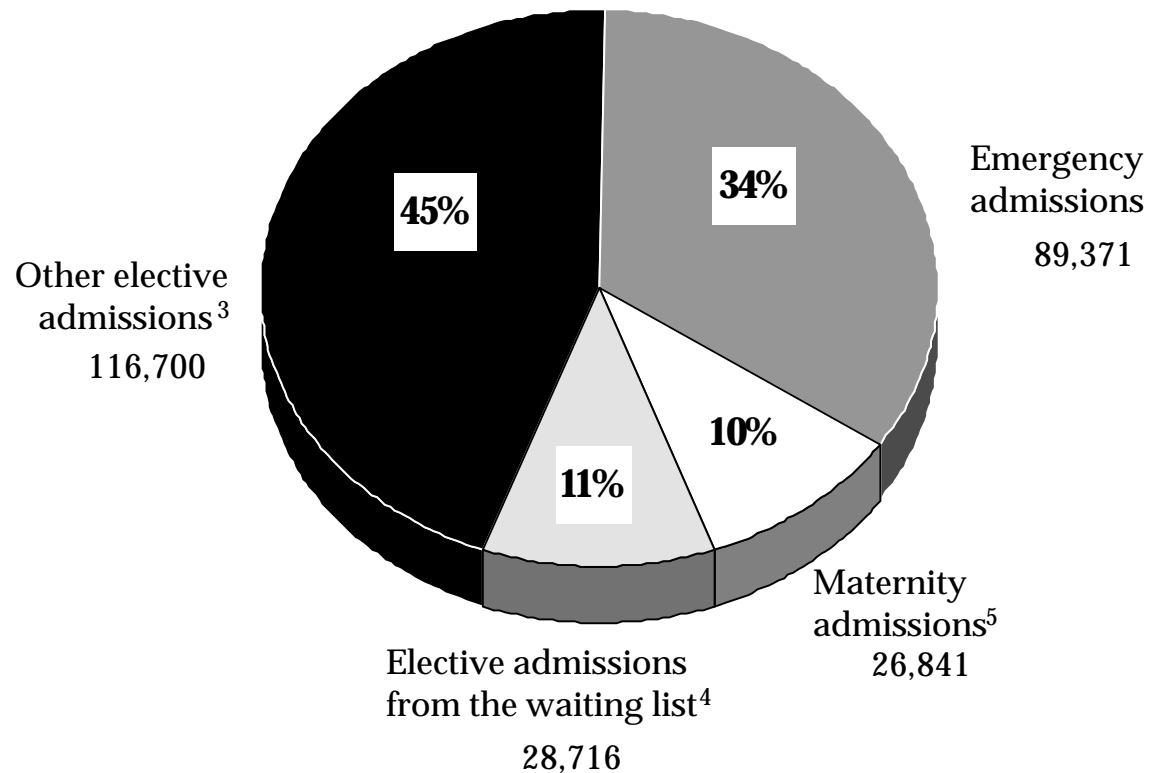
**Table 5.4 Percentage of people from elective surgery waiting lists who were admitted within the ideal time, by Urgency, by Individual Hospital (continued)**

Hospital	Urgent cases admitted within 30 days during the quarter				Semi-urgent cases admitted within 90 days during the quarter			
	June 2001		September 2001		June 2001		September 2001	
	Number	Percentage	Number	Percentage	Number	Percentage	Number	Percentage
<b>Major regional hospitals</b>								
Ballarat Health Services	21	100.0%	16	100.0%	313	82.4%	315	80.6%
Barwon Health	66	100.0%	66	100.0%	409	79.0%	411	77.5%
Bendigo Health Care Group	123	100.0%	145	100.0%	150	67.6%	153	60.5%
Goulburn Valley Health	149	100.0%	153	100.0%	333	100.0%	302	95.9%
New Latrobe Regional Hospital	126	100.0%	141	100.0%	357	96.7%	307	97.2%
<b>Other rural hospitals</b>								
Wangaratta District Base Hospital	79	100.0%	65	100.0%	271	90.0%	200	95.7%
West Gippsland Hospital	136	100.0%	105	96.3%	155	96.9%	182	91.5%
<b>Total</b>	<b>5,772</b>	<b>100.00%</b>	<b>5,838</b>	<b>99.9%</b>	<b>10,569</b>	<b>77.2%</b>	<b>10,416</b>	<b>78.8%</b>

Source: Elective Surgery Information System.

## What is the admission source of total hospital activity?

**Figure 5.3 Separations by admission type: September quarter 2001** <sup>1 2</sup>



<sup>1</sup> Percentages may not add due to rounding.

<sup>2</sup> September quarter 2001 data are provisional.

<sup>3</sup> Includes statistical admissions, which refer to a change in patient care type.

<sup>4</sup> Patients admitted from the elective surgery waiting list during the quarter (ESIS).

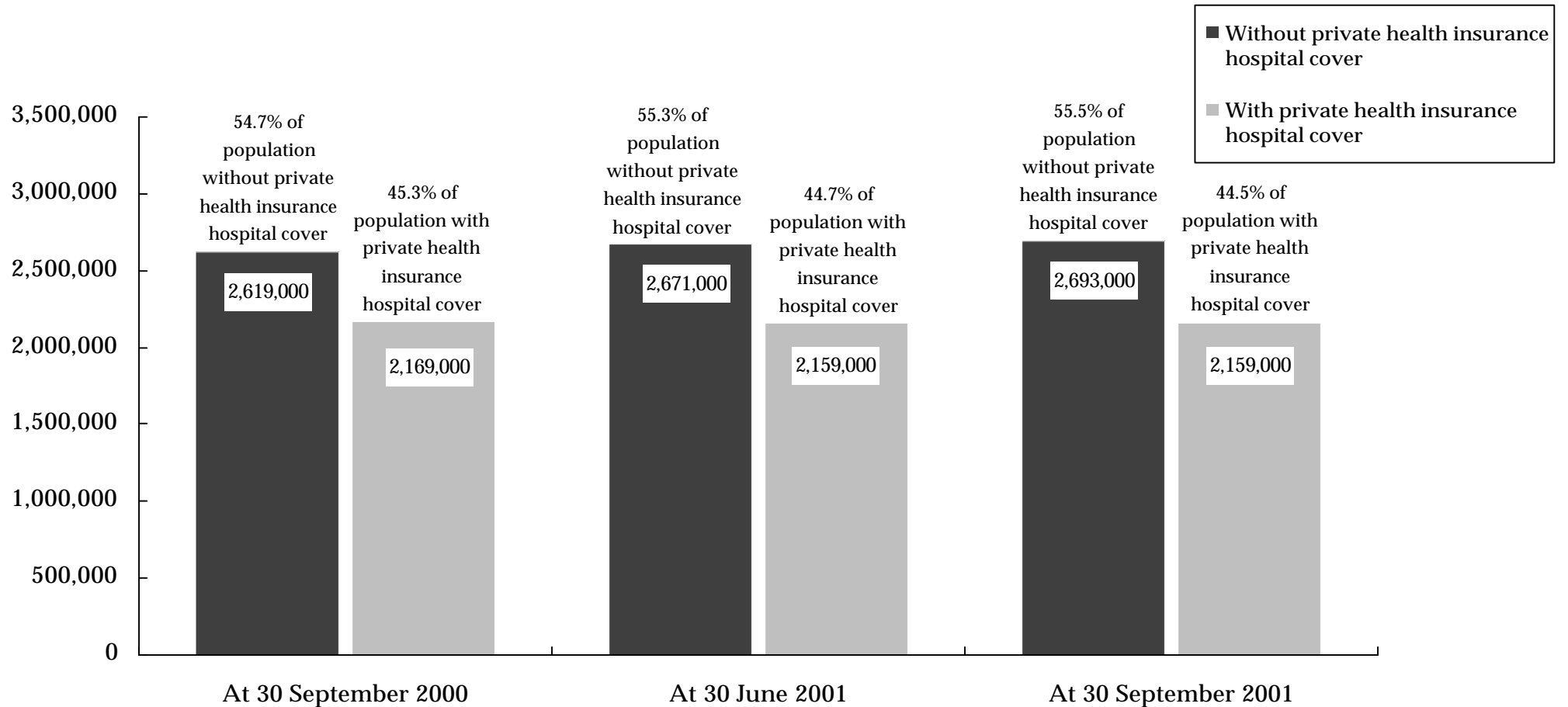
<sup>5</sup> Includes maternity and newborn admissions.

Source: Victorian Admitted Episode Dataset (21 November 2001 update).  
Elective Surgery Information System.

## 6. Private Health Insurance

### How many Victorians have private health insurance hospital cover?

**Figure 6.1 Health insurance status of Victorians<sup>1 2 3</sup>**



<sup>1</sup> Data are for all people covered by insurance, that is, contributors, partners and dependants.

<sup>2</sup> Data for current and previous quarters are provisional.

<sup>3</sup> Statistics reflect total persons covered by any level of hospital private health insurance.

Source: Private Health Insurance Administration Council (23 November 2001).

# 7. Glossary

## ***What do the terms used in this report mean?***

### ***Admitted Patient***

Someone who is an inpatient in a hospital. Sameday patients who are admitted for less than 24 hours are also counted as inpatients but people who attend hospital for outpatient clinics are not.

### ***Cancellation***

The request for elective surgery has been withdrawn and the patient is removed from this hospital's Waiting List without admission for the awaited procedure. This can occur for clinical reasons, transfer of the patient to another hospital, or at the request of the patient.

### ***Casemix Funded***

A system of funding hospitals according to the actual number and type of services that they provide. Casemix funding was introduced for most Victorian public hospitals in July 1993.

### ***Coronary Care***

A hospital unit with specialised staff and equipment to care for patients with heart disease.

### ***Elective Admission***

A planned admission to hospital. Emergency admissions and transfers from other hospitals are not counted as elective admissions.

### ***Elective Surgery***

Planned surgery that is not an emergency requiring hospital admission within 24 hours.

### ***Emergency Admission***

An unplanned admission to hospital due to unexpected illness or injury that requires urgent care.

### ***Emergency Department***

A hospital department that specialises in providing emergency care for people who are in need of urgent care (ambulance cases for example) and people who choose to seek treatment in an emergency department.

### ***Intensive Care***

A hospital unit with specialised staff and equipment to provide continuous care for critically ill, injured or post-operative patients.

### ***Non Sameday Patient***

In the context of this report, a non sameday patient is an inpatient who leaves hospital on a later date than when they were admitted.

### ***Separation***

When an inpatient leaves a hospital. This is the technical way of counting the number of inpatients treated by a hospital.

### ***Step Down Bed***

Hospital beds with specialised staff and equipment to care for patients who no longer need coronary or intensive care but are not yet ready to move to a general hospital ward.

### ***Transfer***

When an inpatient is moved from one hospital to another. This might be in order to obtain a specialised treatment not available at the first hospital or because of the patient's preferences.

### ***Waiting List Hospital***

A major public hospital that performs elective surgery for public patients and uses a waiting list to properly keep track of people who require elective surgery.

Approved: \_\_\_\_\_

Date: \_\_\_\_\_