

# **Hospital services report**

**June quarter 2004**

## Notes

This document contains the most up-to-date information available at the time of preparation.

The *Hospital services report* is available on the Department of Human Services internet site located at:

<http://www.health.vic.gov.au/hsr/index.htm>

Design and production by Department of Human Services, Melbourne, Victoria.

October 2004

© Department of Human Services 2004

This publication is copyright. No part may be reproduced by any process except in accordance with the provisions of the *Copyright Act 1968*.

# Contents

|                                                         |    |
|---------------------------------------------------------|----|
| <b>Introduction</b>                                     | 1  |
| 1. Patients waiting for residential aged care placement | 3  |
| 2. Hospital admitted patient activity                   | 5  |
| 3. Access to emergency services                         | 7  |
| 4. Access to critical care services                     | 17 |
| 5. Access to elective surgery                           | 19 |
| 6. Private health insurance                             | 31 |
| 7. Glossary                                             | 33 |

This page has been left blank intentionally.

# Introduction

Consumers, health care providers and government all need information relating to the quality of health services. Public access to information assists consumers to understand the health care system, assists providers of health services in planning, and increases the accountability of the Department of Human Services to the people in the state of Victoria, Australia.

The *Hospital services report* was introduced in 1995. This edition includes data for the June quarter 2004, which covers the months of April, May and June.

The information included in this report is often requested from the department. Since technical information of this nature is very difficult to interpret, each graph and table needs to be carefully considered in the context of the complexity of the health care system. Department staff, hospital staff, general practitioners and other health care professionals may be able to assist you to interpret this report.

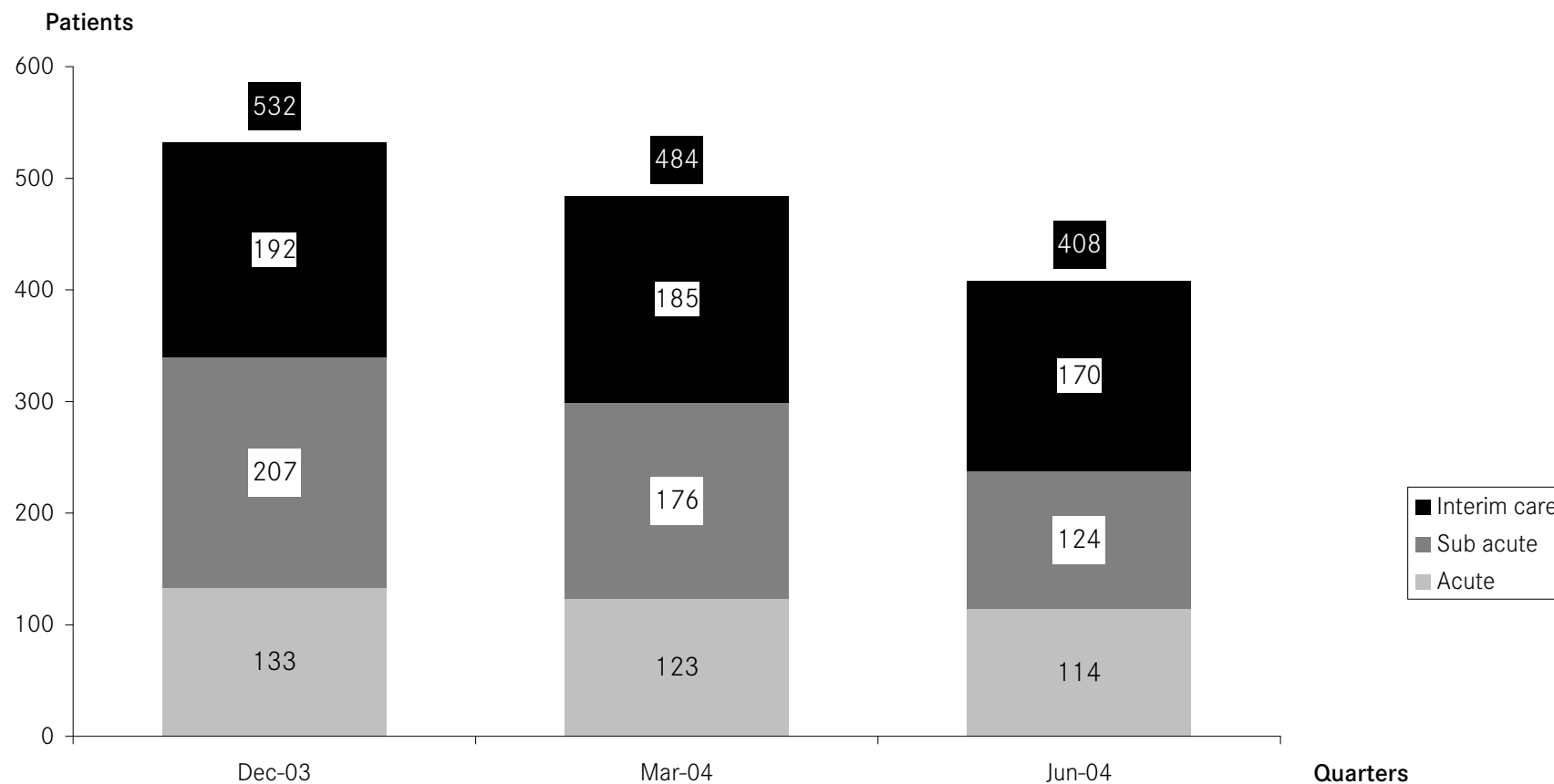
A number of graphs and tables refer to major metropolitan hospitals. A list of the major metropolitan hospitals can be found in the glossary.

This page has been left blank intentionally.

# 1. Patients waiting for residential aged care placement

## How many patients are waiting for residential aged care placements?

Fig 1.1 Number of acute, subacute and interim care patients waiting for residential aged care placement <sup>1 2 3 4</sup>



<sup>1</sup> Hospitals reporting sub acute are Angliss, Anne Caudle, Bundoora Extended Care, Bethlehem, Broadmeadows, Caritas Christi, Caulfield General, Dandenong, Goulburn Valley, Grace McKellar, Kingston, Latrobe Regional, Maroondah, Mt Eliza, Melbourne Extended Care Rehabilitation Service, Peter James, Queen Elizabeth Centre, Royal Talbot, St George's, Sunshine and Williamstown.

<sup>2</sup> Hospitals reporting acute are the Alfred, Angliss, Austin Hospital, Ballarat, Barwon Health, Bendigo, Box Hill, Dandenong, Frankston, Goulburn Valley, Latrobe Regional, Maroondah, Monash Medical Centre (Clayton & Moorabbin), The Northern, Rosebud, Royal Melbourne, Sandringham, St Vincent's, Sunshine, Western and Williamstown.

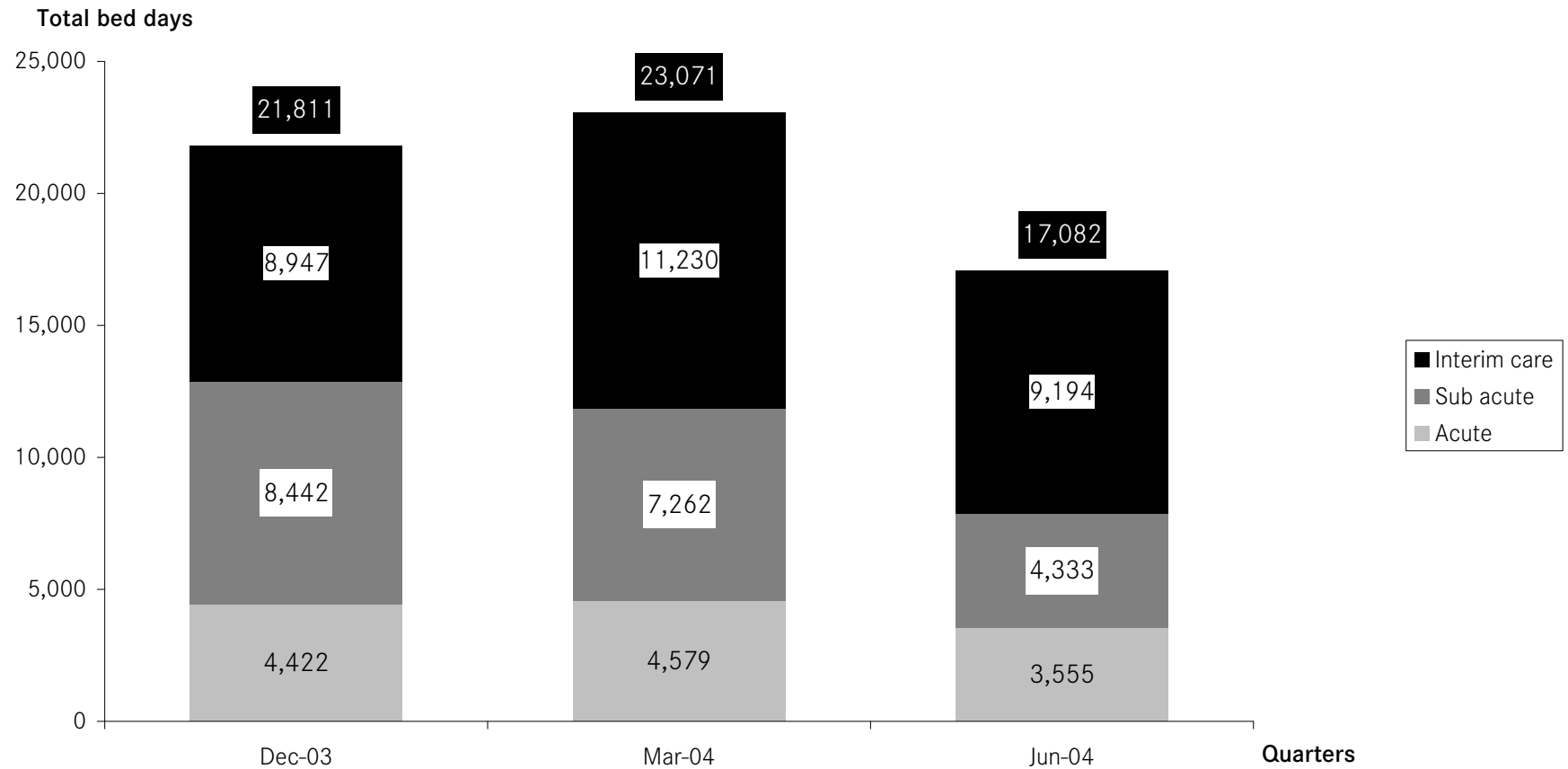
<sup>3</sup> Hospitals reporting interim care are Eastern Health, Melbourne Health, Northern Health, Peninsula Health, St Vincent's Health, Southern Health and Western Health.

<sup>4</sup> Data for June 2004 are provisional.

Source: Department of Human Services bed census.

# How many patients are waiting for residential aged care placements?

Fig 1.2 Number of bed days patients wait for residential aged care placement <sup>1</sup>



<sup>1</sup> Notes for figure 1.1 apply.

Source: Department of Human Services bed census.

## 2. Hospital admitted patient activity

### How many patients are admitted to hospital?

Table 2.1 Admitted patients by individual hospital <sup>1 2</sup>

| Hospital                                         | June<br>quarter 2003 | March<br>quarter 2004 | June<br>quarter 2004 | % change June 2003<br>to June 2004 |
|--------------------------------------------------|----------------------|-----------------------|----------------------|------------------------------------|
| <b>Major metropolitan hospitals <sup>3</sup></b> |                      |                       |                      |                                    |
| Angliss Hospital                                 | 5,680                | 5,585                 | 5,529                | -2.7%                              |
| Austin Hospital                                  | 17,342               | 17,243                | 17,196               | -0.8%                              |
| Box Hill Hospital                                | 10,642               | 10,216                | 10,968               | 3.1%                               |
| Dandenong Hospital                               | 7,411                | 7,192                 | 7,105                | -4.1%                              |
| Frankston Hospital                               | 11,083               | 11,321                | 11,434               | 3.2%                               |
| Maroondah Hospital                               | 5,119                | 5,445                 | 5,620                | 9.8%                               |
| Monash Medical Centre                            | 20,775               | 21,539                | 21,627               | 4.1%                               |
| Royal Melbourne Hospital                         | 21,344               | 21,026                | 21,056               | -1.3%                              |
| St Vincent's Hospital                            | 11,605               | 11,136                | 11,210               | -3.4%                              |
| Sunshine Hospital                                | 7,247                | 7,240                 | 8,001                | 10.4%                              |
| The Alfred                                       | 14,118               | 12,572                | 12,817               | -9.2%                              |
| The Northern Hospital                            | 7,085                | 7,530                 | 8,112                | 14.5%                              |
| Western Hospital                                 | 8,845                | 9,201                 | 9,519                | 7.6%                               |
| <b>Other metropolitan hospitals</b>              |                      |                       |                      |                                    |
| Caulfield General Medical Centre                 | 529                  | 395                   | 391                  | -26.1%                             |
| Mercy Public Hospital, East Melbourne            | 4,577                | 4,677                 | 4,556                | -0.5%                              |
| Peter MacCallum Cancer Institute                 | 4,269                | 4,855                 | 5,227                | 22.4%                              |
| Royal Children's Hospital                        | 8,346                | 7,594                 | 8,428                | 1.0%                               |
| Royal Women's Hospital                           | 7,227                | 7,521                 | 7,042                | -2.6%                              |
| Sandringham & District Memorial Hospital         | 4,051                | 3,997                 | 4,150                | 2.4%                               |
| The Royal Victorian Eye & Ear Hospital           | 3,421                | 2,904                 | 3,464                | 1.3%                               |
| Other Metropolitan hospitals                     | 13,133               | 12,900                | 13,622               | 3.7%                               |

<sup>1</sup> Data refer to the number of WIES-fundable separations.

<sup>2</sup> 2003/2004 data are provisional

<sup>3</sup> Major metropolitan hospitals contain the campuses listed in the glossary.

**Table 2.1 Admitted patients by individual hospital (continued)**

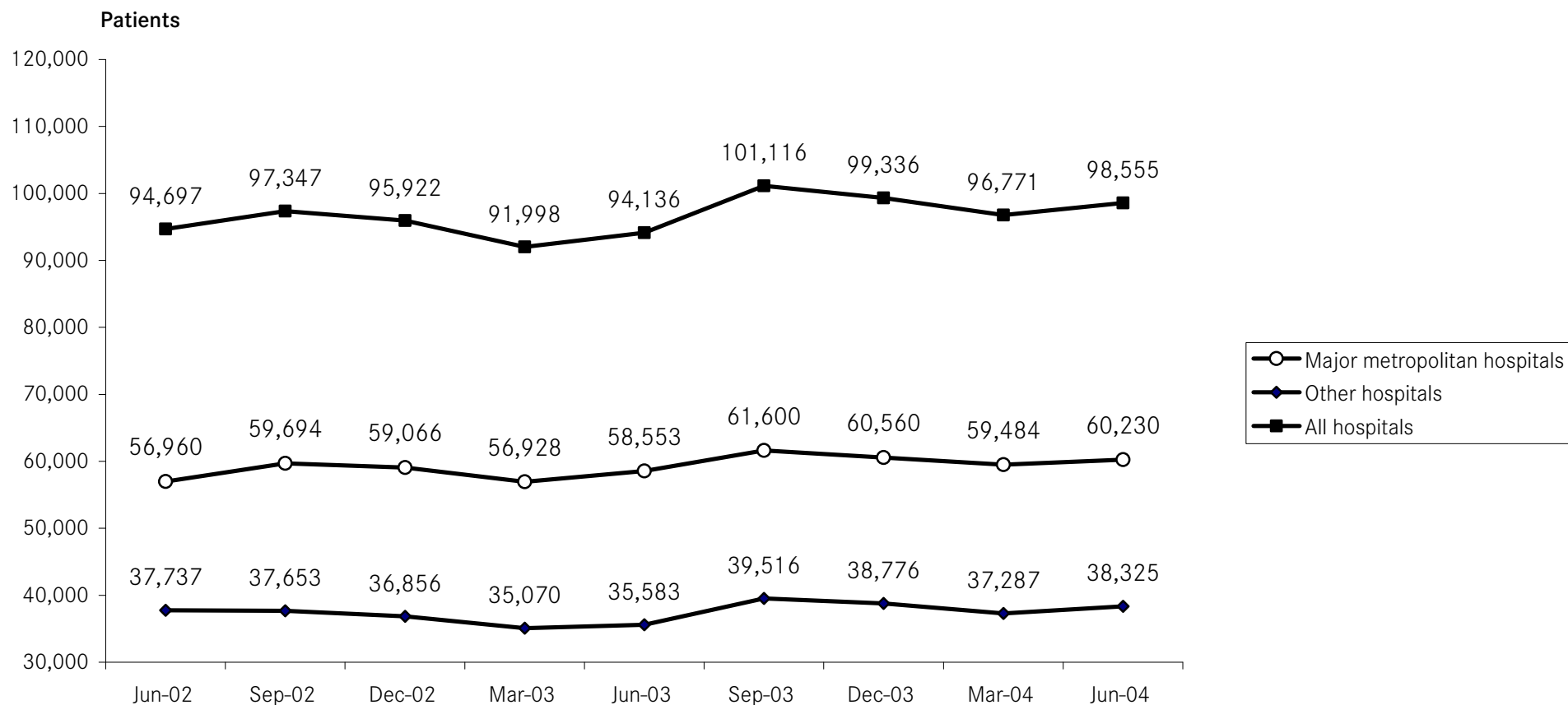
| Hospital                         | June<br>quarter 2003 | March<br>quarter 2004 | June<br>quarter 2004 | % change June 2003<br>to June 2004 |
|----------------------------------|----------------------|-----------------------|----------------------|------------------------------------|
| <b>Major regional hospitals</b>  |                      |                       |                      |                                    |
| Ballarat Health Services         | 5,916                | 5,941                 | 6,048                | 2.2%                               |
| Barwon Health                    | 13,782               | 14,109                | 14,053               | 2.0%                               |
| Bendigo Health Care Group        | 6,208                | 5,912                 | 6,136                | -1.2%                              |
| Goulburn Valley Health           | 5,221                | 5,277                 | 5,296                | 1.4%                               |
| Latrobe Regional Hospital        | 5,588                | 5,679                 | 6,013                | 7.6%                               |
| <b>Other rural hospitals</b>     |                      |                       |                      |                                    |
| Central Gippsland Health Service | 2,666                | 2,793                 | 2,563                | -3.9%                              |
| Northeast Health Wangaratta      | 3,112                | 3,170                 | 3,285                | 5.6%                               |
| South West Healthcare            | 3,791                | 3,609                 | 3,747                | -1.2%                              |
| Wimmera Health Care Group        | 2,292                | 2,228                 | 2,379                | 3.8%                               |
| Wodonga Regional Health Service  | 3,784                | 4,278                 | 4,099                | 8.3%                               |
| Other rural hospitals            | 36,156               | 36,022                | 36,833               | 1.9%                               |
| <b>Grand total</b>               | <b>282,365</b>       | <b>281,107</b>        | <b>287,526</b>       | <b>1.8%</b>                        |

Source: Victorian admitted episode dataset (27 September 2004 update).

### 3. Access to emergency services

#### How many emergency patients are admitted to hospital?

Fig 3.1 Patients admitted to public hospitals requiring emergency care <sup>1 2 3</sup>



<sup>1</sup> Major metropolitan hospitals contain the campuses listed in the glossary.

<sup>2</sup> Data refer to the number of WIES-fundable separations.

<sup>3</sup> 2003/2004 data are provisional.

Source: Victorian admitted episode dataset (27 September 2004 update).

## How many emergency patients are admitted to hospital?

Table 3.1 Emergency admissions <sup>1 2 3</sup>

| Hospital                            | June<br>quarter 2003 | March<br>quarter 2004 | June<br>quarter 2004 | % change March 2004<br>to June 2004 | % change June 2003<br>to June 2004 |
|-------------------------------------|----------------------|-----------------------|----------------------|-------------------------------------|------------------------------------|
| <b>Major metropolitan hospitals</b> |                      |                       |                      |                                     |                                    |
| Angliss Hospital                    | 2,099                | 2,089                 | 2,206                | 5.6%                                | 5.1%                               |
| Austin Hospital                     | 5,506                | 5,354                 | 5,188                | -3.1%                               | -5.8%                              |
| Box Hill Hospital                   | 4,980                | 5,097                 | 5,364                | 5.2%                                | 7.7%                               |
| Dandenong Hospital                  | 4,533                | 4,350                 | 4,305                | -1.0%                               | -5.0%                              |
| Frankston Hospital                  | 5,734                | 5,852                 | 6,026                | 3.0%                                | 5.1%                               |
| Maroondah Hospital                  | 3,000                | 3,511                 | 3,612                | 2.9%                                | 20.4%                              |
| Monash Medical Centre               | 6,482                | 6,827                 | 6,930                | 1.5%                                | 6.9%                               |
| Royal Melbourne Hospital            | 6,185                | 6,015                 | 5,818                | -3.3%                               | -5.9%                              |
| St Vincent's Hospital               | 3,995                | 4,183                 | 3,975                | -5.0%                               | -0.5%                              |
| Sunshine Hospital                   | 3,065                | 3,158                 | 3,607                | 14.2%                               | 17.7%                              |
| The Alfred                          | 4,468                | 4,673                 | 4,627                | -1.0%                               | 3.6%                               |
| The Northern Hospital               | 3,760                | 3,799                 | 4,066                | 7.0%                                | 8.1%                               |
| Western Hospital                    | 4,746                | 4,576                 | 4,506                | -1.5%                               | -5.1%                              |
| <b>Major hospitals total</b>        | <b>58,553</b>        | <b>59,484</b>         | <b>60,230</b>        | 1.3%                                | 2.9%                               |
| <b>Other hospitals total</b>        | <b>35,583</b>        | <b>37,287</b>         | <b>38,325</b>        | 2.8%                                | 7.7%                               |
| <b>Grand total</b>                  | <b>94,136</b>        | <b>96,771</b>         | <b>98,555</b>        | 1.8%                                | 4.7%                               |

<sup>1</sup> 2003/2004 data are provisional

<sup>2</sup> Data exclude elective, maternity, newborn and statistical admissions.

<sup>3</sup> Data refer to the number of WIES-fundable separations.

Source: Victorian admitted episode dataset (27 September 2004 update).

## How many patients are treated in each hospital emergency department?

Table 3.2 Patients treated in hospital emergency departments by Individual Hospitals <sup>1 2</sup>

| Hospital                            | June<br>quarter 2003 | March<br>quarter 2004 | June<br>quarter 2004 | % change June 2003<br>to June 2004 |
|-------------------------------------|----------------------|-----------------------|----------------------|------------------------------------|
| <b>Major metropolitan hospitals</b> |                      |                       |                      |                                    |
| Angliss Hospital                    | 9,129                | 8,794                 | 8,848                | -3.1%                              |
| Austin Hospital                     | 9,938                | 9,873                 | 9,612                | -3.3%                              |
| Box Hill Hospital                   | 9,234                | 9,559                 | 9,245                | 0.1%                               |
| Dandenong Hospital                  | 11,516               | 11,596                | 10,941               | -5.0%                              |
| Frankston Hospital                  | 11,049               | 11,402                | 11,337               | 2.6%                               |
| Maroondah Hospital                  | 8,228                | 9,324                 | 9,161                | 11.3%                              |
| Monash Medical Centre               | 12,997               | 13,202                | 13,390               | 3.0%                               |
| Royal Melbourne Hospital            | 11,684               | 11,312                | 10,878               | -6.9%                              |
| St Vincent's Hospital               | 7,971                | 7,380                 | 7,452                | -6.5%                              |
| Sunshine Hospital                   | 13,756               | 13,547                | 13,944               | 1.4%                               |
| The Alfred                          | 9,667                | 9,962                 | 9,218                | -4.6%                              |
| The Northern Hospital               | 12,622               | 15,149                | 15,000               | 18.8%                              |
| Western Hospital                    | 7,645                | 8,061                 | 7,659                | 0.2%                               |
| <b>Other metropolitan hospitals</b> |                      |                       |                      |                                    |
| Royal Children's Hospital           | 14,306               | 12,113                | 14,098               | -1.5%                              |
| <b>Major regional hospitals</b>     |                      |                       |                      |                                    |
| Ballarat Health Services            | 8,811                | 8,938                 | 8,413                | -4.5%                              |
| Barwon Health                       | 9,546                | 9,717                 | 9,384                | -1.7%                              |
| Bendigo Health Care Group           | 7,896                | 8,026                 | 7,903                | 0.1%                               |
| Goulburn Valley Health              | 6,822                | 7,397                 | 7,036                | 3.1%                               |
| Latrobe Regional Hospital           | 6,533                | 6,106                 | 6,184                | -5.3%                              |
| <b>Grand total</b>                  | <b>189,350</b>       | <b>191,458</b>        | <b>189,703</b>       | <b>0.2%</b>                        |

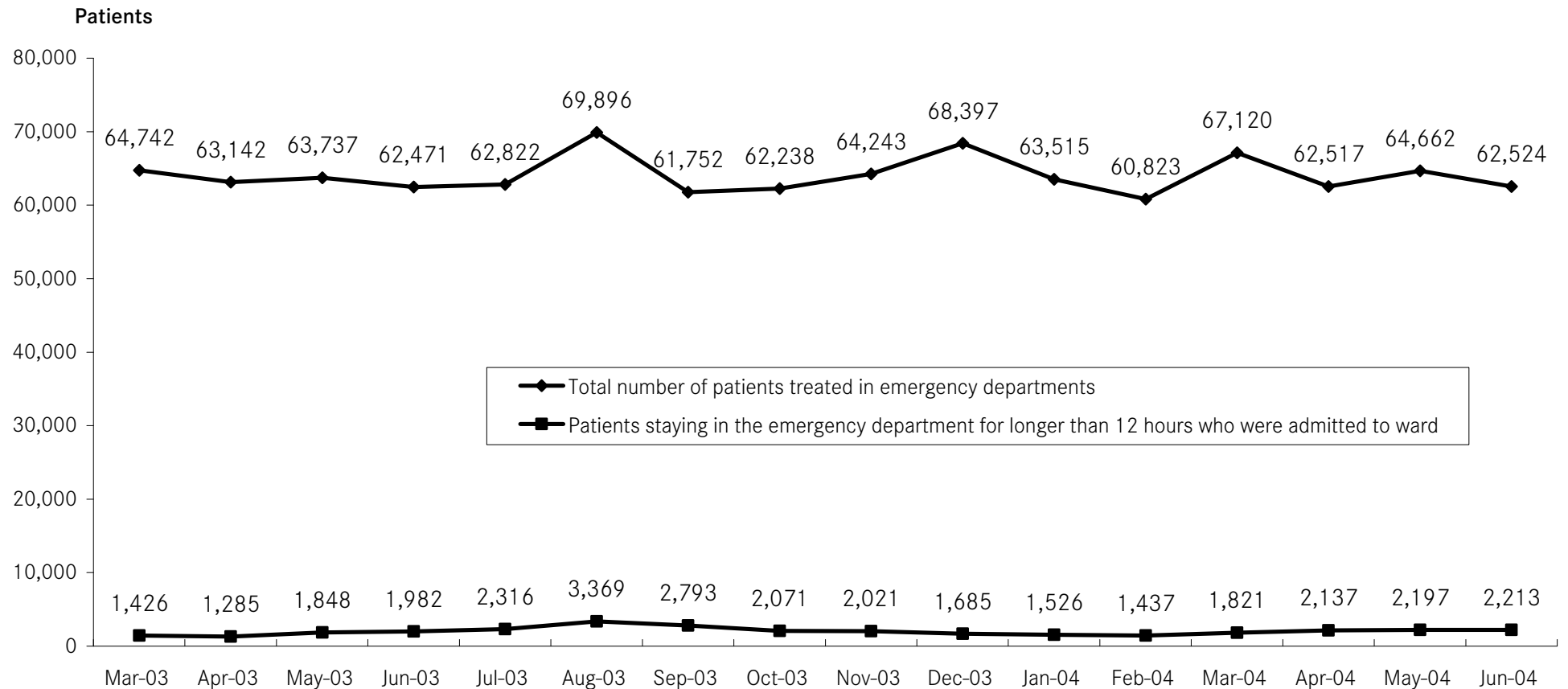
<sup>1</sup> Data include all emergency department patients, that is, they include patients who are subsequently admitted to hospital and patients who are treated in the emergency department without being admitted to hospital.

<sup>2</sup> 2003/2004 data are provisional

Source: Victorian emergency minimum dataset.

## How many patients stay for an extended period in the emergency department?

Fig 3.2 Patients staying in emergency departments for over 12 hours while waiting for a hospital bed <sup>1 2</sup>



<sup>1</sup> The period of 'stay' is calculated from the time the patient arrives in the emergency department to the time when the patient leaves the emergency department.

<sup>2</sup> 2003/2004 data are provisional.

Source: Victorian emergency minimum dataset.

**Table 3.3 Patients staying in selected public hospital emergency departments for over 12 hours while waiting for a hospital bed <sup>1 2 3</sup>**

| Hospital                            | June quarter 2003 |            | March quarter 2004 |            | June quarter 2004 |            |
|-------------------------------------|-------------------|------------|--------------------|------------|-------------------|------------|
|                                     | Numbers           | Percentage | Numbers            | Percentage | Numbers           | Percentage |
| <b>Major metropolitan hospitals</b> |                   |            |                    |            |                   |            |
| Angliss Hospital                    | 93                | 7%         | 103                | 9%         | 146               | 12%        |
| Austin Hospital                     | 247               | 8%         | 199                | 6%         | 459               | 15%        |
| Box Hill Hospital                   | 309               | 11%        | 236                | 8%         | 429               | 15%        |
| Dandenong Hospital                  | 328               | 13%        | 491                | 21%        | 574               | 24%        |
| Frankston Hospital                  | 192               | 6%         | 472                | 9%         | 552               | 11%        |
| Maroondah Hospital                  | 361               | 20%        | 218                | 11%        | 428               | 20%        |
| Monash Medical Centre               | 634               | 19%        | 413                | 13%        | 659               | 19%        |
| Royal Melbourne Hospital            | 845               | 24%        | 794                | 23%        | 665               | 20%        |
| St Vincent's Hospital               | 158               | 7%         | 90                 | 7%         | 90                | 5%         |
| Sunshine Hospital                   | 67                | 5%         | 55                 | 4%         | 108               | 7%         |
| The Alfred                          | 391               | 16%        | 781                | 33%        | 843               | 35%        |
| The Northern Hospital               | 578               | 25%        | 111                | 3%         | 313               | 8%         |
| Western Hospital                    | 306               | 13%        | 137                | 6%         | 210               | 9%         |
| <b>Other metropolitan hospitals</b> |                   |            |                    |            |                   |            |
| Royal Children's Hospital           | 23                | 1%         | 52                 | 2%         | 121               | 4%         |
| <b>Major regional hospitals</b>     |                   |            |                    |            |                   |            |
| Ballarat Health Services            | 20                | 1%         | 21                 | 1%         | 21                | 1%         |
| Barwon Health                       | 258               | 8%         | 284                | 8%         | 356               | 10%        |
| Bendigo Health Care Group           | 171               | 11%        | 107                | 7%         | 106               | 7%         |
| Goulburn Valley Health              | 0                 | 0%         | 200                | 14%        | 393               | 20%        |
| Latrobe Regional Hospital           | 134               | 12%        | 20                 | 2%         | 74                | 6%         |
| <b>Grand total</b>                  | <b>5,115</b>      | <b>11%</b> | <b>4,784</b>       | <b>10%</b> | <b>6,547</b>      | <b>14%</b> |

<sup>1</sup> The period of 'stay' is calculated from the time the patient arrives in the emergency department to the time when the patient leaves the emergency department.

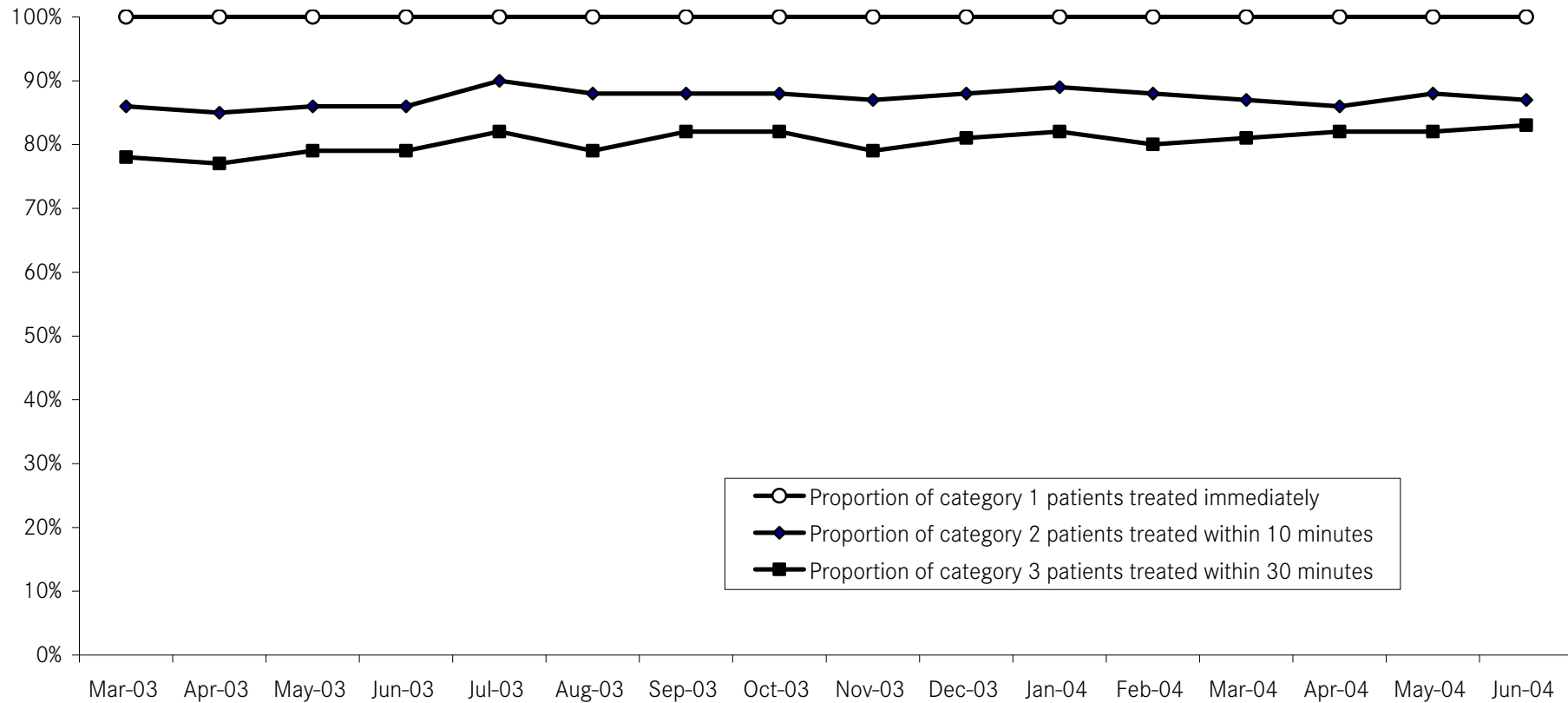
<sup>2</sup> Data represent the number of emergency department patients admitted to ward who spend more than 12 hours in the emergency department prior to being admitted as a proportion of all emergency patients being admitted to ward.

<sup>3</sup> 2003/2004 data are provisional.

Source: Victorian emergency minimum dataset.

## How many emergency patients are treated within ideal time?

Fig 3.3 Emergency department achievement of ACEM waiting times by triage category <sup>1 2 3</sup>



<sup>1</sup> Waiting times are calculated as the time between presentation at the emergency department and commencement of treatment. The following Australasian College for Emergency Medicine (ACEM) patient categories and recommended treatment times are used:

Category 1: Resuscitation case requiring immediate treatment, for example, major trauma, cardiac arrest, unconsciousness, shock.

Category 2: Emergency case requiring treatment within 10 minutes, for example, severe trauma, chest pain, severe pain, severe breathing difficulty.

Category 3: Urgent case requiring treatment within 30 minutes, for example, moderate trauma, infection, or breathing difficulty.

<sup>2</sup> The business rule for 'treatment time' changed in July 2002, now taking into account treatment by nurses.

<sup>3</sup> 2003/2004 data are provisional.

## How many emergency department patients are treated within ideal time?

Table 3.4 Patients treated in selected public hospital emergency departments in triage category 1, 2 or 3 within ACEM recommended waiting times: June quarter 2004 <sup>1 2 3</sup>

| Hospital                            | Triage Category 1 |                                 | Triage Category 2 |                                 | Triage Category 3 |                                 |
|-------------------------------------|-------------------|---------------------------------|-------------------|---------------------------------|-------------------|---------------------------------|
|                                     | Total patients    | Treated within recommended time | Total patients    | Treated within recommended time | Total patients    | Treated within recommended time |
| <b>Major metropolitan hospitals</b> |                   |                                 |                   |                                 |                   |                                 |
| Angliss Hospital                    | 27                | 100%                            | 398               | 80%                             | 2,091             | 77%                             |
| Austin Hospital                     | 118               | 100%                            | 745               | 85%                             | 3,497             | 78%                             |
| Box Hill Hospital                   | 116               | 100%                            | 1,094             | 83%                             | 3,599             | 64%                             |
| Dandenong Hospital                  | 86                | 100%                            | 941               | 96%                             | 2,991             | 93%                             |
| Frankston Hospital                  | 84                | 100%                            | 2,907             | 95%                             | 5,207             | 81%                             |
| Maroondah Hospital                  | 52                | 100%                            | 614               | 62%                             | 2,842             | 72%                             |
| Monash Medical Centre               | 172               | 100%                            | 1,730             | 88%                             | 4,651             | 82%                             |
| Royal Melbourne Hospital            | 297               | 100%                            | 1,372             | 71%                             | 3,330             | 80%                             |
| St Vincent's Hospital               | 95                | 100%                            | 657               | 74%                             | 2,889             | 60%                             |
| Sunshine Hospital                   | 36                | 100%                            | 686               | 100%                            | 4,246             | 92%                             |
| The Alfred                          | 319               | 100%                            | 1,266             | 82%                             | 3,573             | 84%                             |
| The Northern Hospital               | 68                | 100%                            | 831               | 99%                             | 3,209             | 99%                             |
| Western Hospital                    | 88                | 100%                            | 709               | 97%                             | 2,578             | 96%                             |
| <b>Other metropolitan hospitals</b> |                   |                                 |                   |                                 |                   |                                 |
| Royal Children's Hospital           | 56                | 100%                            | 492               | 88%                             | 3,775             | 76%                             |
| <b>Major regional hospitals</b>     |                   |                                 |                   |                                 |                   |                                 |
| Ballarat Health Services            | 32                | 100%                            | 249               | 81%                             | 1,530             | 92%                             |
| Barwon Health                       | 46                | 100%                            | 828               | 98%                             | 2,439             | 96%                             |
| Bendigo Health Care Group           | 42                | 100%                            | 754               | 78%                             | 2,376             | 79%                             |
| Goulburn Valley Health              | 22                | 100%                            | 445               | 85%                             | 1,880             | 84%                             |
| Latrobe Regional Hospital           | 34                | 100%                            | 297               | 96%                             | 1,558             | 95%                             |
| <b>Grand total</b>                  | <b>1,790</b>      | <b>100%</b>                     | <b>17,015</b>     | <b>87%</b>                      | <b>58,261</b>     | <b>82%</b>                      |

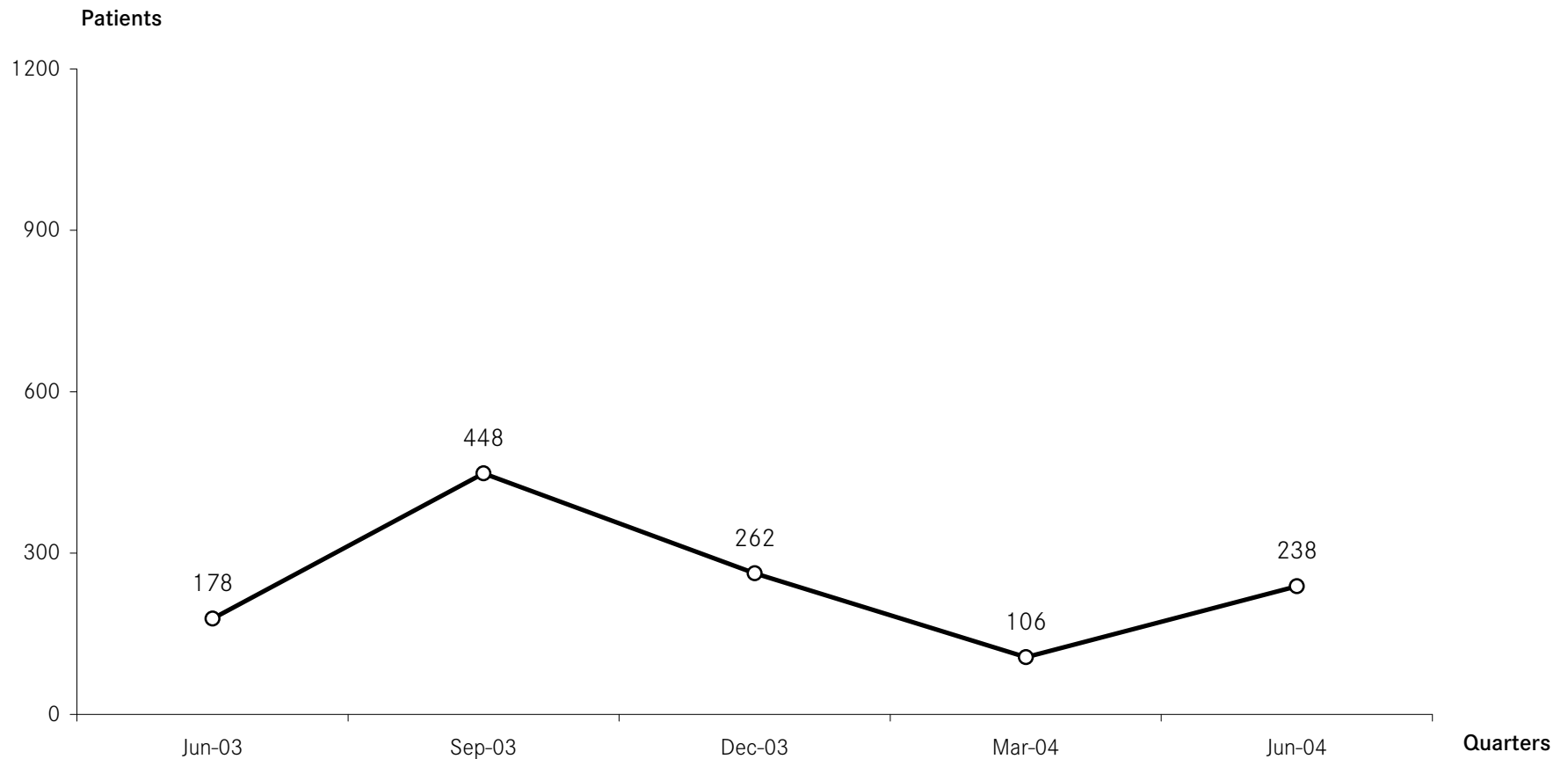
<sup>1</sup> Australian College for Emergency Medicine (ACEM).

<sup>2</sup> The business rule for 'treatment time' changed in July 2002/03, now taking into account treatment from nurses.

<sup>3</sup> 2003/2004 data are provisional.

## How often do hospital emergency departments go on 'bypass'?

Fig 3.4 Periods of ambulance bypass of public hospitals <sup>1 2</sup>



<sup>1</sup> Hospital emergency departments can request to go on ambulance bypass when the emergency department has reached maximum capacity and the treatment of patients already in the emergency department could be significantly compromised with the arrival, by ambulance, of further patients. Each individual period of ambulance bypass is for two hours or less.

<sup>2</sup> Bypass policy allows for critically ill or injured patients to be taken to the nearest hospital emergency department regardless of bypass status.

<sup>3</sup> Metropolitan Ambulance Service (MAS) response times are now being reported in the MAS Response Report: A Quarterly Statistical Review of MAS, Melbourne. Copies of the response report can be obtained from MAS, Corporate Planning and Corporate Communications Unit, phone (03) 9840 3648.

Source: Metropolitan Ambulance Service.

## How often do hospital emergency departments go on bypass?

Table 3.5 Periods of ambulance bypass, by individual hospital <sup>12</sup>

| Hospital                            | Jun-03 qtr | Sep-03 qtr | Dec-03 qtr | Mar-04 qtr | Jun-04 qtr |
|-------------------------------------|------------|------------|------------|------------|------------|
| <b>Major metropolitan hospitals</b> |            |            |            |            |            |
| Angliss Hospital                    | 9          | 20         | 11         | 3          | 8          |
| Austin Hospital                     | 11         | 27         | 16         | 5          | 25         |
| Box Hill Hospital                   | 13         | 34         | 25         | 7          | 29         |
| Dandenong Hospital                  | 30         | 78         | 31         | 30         | 36         |
| Frankston Hospital                  | 25         | 40         | 35         | 20         | 35         |
| Maroondah Hospital                  | 8          | 18         | 1          | 5          | 9          |
| Monash Medical Centre               | 23         | 54         | 40         | 3          | 17         |
| Royal Melbourne Hospital            | 8          | 40         | 35         | 12         | 25         |
| St Vincent's Hospital               | 6          | 18         | 13         | 4          | 8          |
| Sunshine Hospital                   | 5          | 20         | 5          | 1          | 0          |
| The Alfred                          | 2          | 13         | 28         | 9          | 37         |
| The Northern Hospital               | 11         | 16         | 0          | 0          | 0          |
| Western Hospital                    | 27         | 70         | 22         | 7          | 9          |
| <b>Total</b>                        | <b>178</b> | <b>448</b> | <b>262</b> | <b>106</b> | <b>238</b> |

<sup>1</sup> Hospital emergency departments can request to go on ambulance bypass when the emergency department has reached maximum capacity and the treatment of patients already in the emergency department could be significantly compromised with the arrival by ambulance, of further patients.

<sup>2</sup> Metropolitan Ambulance Service (MAS) response times are now being reported in the *MAS Response Report: A Quarterly Statistical Review of MAS, Melbourne*. Copies of the response report can be obtained from MAS, Corporate Planning and Corporate Communications Unit, phone (03) 9840 3648.

Source: Metropolitan Ambulance Service.

This page has been left blank intentionally.

## 4. Access to critical care services

### How many hospital beds are available for patients who need intensive care?

Table 4.1 Average number of public hospital intensive care beds available and open at 9:00 a.m., by month <sup>1 2</sup>

|                                                      | Apr-03       | May-03       | Jun-03       | Jul-03       | Aug-03       | Sep-03       | Oct-03       | Nov-03       | Dec-03       | Jan-04       | Feb-04       | Mar-04       | Apr-04       | May-04       | Jun-04       |
|------------------------------------------------------|--------------|--------------|--------------|--------------|--------------|--------------|--------------|--------------|--------------|--------------|--------------|--------------|--------------|--------------|--------------|
| Available <sup>3</sup>                               | 4.5          | 2.3          | 1.5          | 2.9          | 1.7          | 1.4          | 3.1          | 3.0          | 4.6          | 5.4          | 3.5          | 2.3          | 4.4          | 2.7          | 1.9          |
| Total open <sup>4</sup>                              | 99.9         | 107.3        | 109.6        | 107.8        | 106.6        | 104.6        | 103.9        | 104.0        | 102.3        | 97.1         | 105.5        | 105.3        | 102.1        | 100.7        | 106.2        |
| Available (including Barwon Health)                  | 4.8          | 2.8          | 1.9          | 3.2          | 2.2          | 1.9          | 3.8          | 3.5          | 5.0          | 6.8          | 4.2          | 2.8          | 5.3          | 3.0          | 2.3          |
| Total open ICU (incl Barwon Health)                  | 108.1        | 115.2        | 117.7        | 116.5        | 114.0        | 112.3        | 110.2        | 111.2        | 110.1        | 103.3        | 111.3        | 111.8        | 108.9        | 108.3        | 113.8        |
| <b>Total open ICU &amp; HDU (incl Barwon Health)</b> | <b>134.9</b> | <b>142.5</b> | <b>141.7</b> | <b>142.0</b> | <b>141.3</b> | <b>139.8</b> | <b>139.1</b> | <b>142.0</b> | <b>140.7</b> | <b>133.6</b> | <b>140.2</b> | <b>144.0</b> | <b>143.7</b> | <b>142.6</b> | <b>143.1</b> |

<sup>1</sup> Based upon hospital census taken at 9:00 a.m. daily.

<sup>2</sup> The data in this table represents an average for each month and varies from table 4.3 which gives averages for the quarter.

<sup>3</sup> Available beds are unoccupied beds which are staffed, functional and available to receive new patients.

<sup>4</sup> Total open beds are all functioning and staffed beds, regardless of whether they are occupied.

Source: Victorian Adult Emergency Retrieval and Coordination Service.

### How many hospital beds are available for patients who need coronary care?

Table 4.2 Average number of public hospital coronary care beds available and open at 9:00 a.m., by month <sup>1</sup>

|                                     | Apr-03 | May-03 | Jun-03 | Jul-03 | Aug-03 | Sep-03 | Oct-03 | Nov-03 | Dec-03 | Jan-04 | Feb-04 | Mar-04 | Apr-04 | May-04 | Jun-04 |
|-------------------------------------|--------|--------|--------|--------|--------|--------|--------|--------|--------|--------|--------|--------|--------|--------|--------|
| Available                           | 6.7    | 5.1    | 5.6    | 6.7    | 4.7    | 5.0    | 4.1    | 4.3    | 9.0    | 8.6    | 7.3    | 6.2    | 4.9    | 4.6    | 5.9    |
| Total open                          | 70.6   | 70.3   | 69.7   | 70.2   | 69.6   | 71.0   | 70.0   | 70.2   | 70.4   | 69.9   | 69.4   | 70.7   | 70.0   | 69.3   | 70.7   |
| Available (including Barwon Health) | 7.2    | 5.5    | 6.1    | 7.3    | 5.2    | 5.5    | 4.5    | 4.6    | 9.2    | 8.9    | 7.4    | 6.5    | 4.9    | 4.6    | 6.2    |
| Total open ICU (incl Barwon Health) | 76.6   | 76.3   | 75.7   | 76.2   | 75.6   | 77.0   | 76.0   | 76.2   | 76.4   | 75.9   | 75.4   | 76.7   | 76.0   | 75.3   | 76.7   |

<sup>1</sup> Notes under Table 4.1 apply.

Source: Victorian Adult Emergency Retrieval and Coordination Service.

## How many hospital beds are available for patients who need intensive care?

Table 4.3 Average number of public hospital intensive care beds available and open at 9:00 a.m.,  
by hospital: June quarter 2004 <sup>1</sup>

| Hospital                            | Available <sup>2</sup> | Total open ICU <sup>3</sup> | Total open ICU & HDU <sup>3</sup> |
|-------------------------------------|------------------------|-----------------------------|-----------------------------------|
| <b>Major metropolitan hospitals</b> |                        |                             |                                   |
| Angliss Hospital                    | n.a.                   | n.a.                        | n.a.                              |
| Austin Hospital                     | 11.3                   | 0.0                         | 13.8                              |
| Box Hill Hospital                   | 6.3                    | 0.3                         | 9.4                               |
| Dandenong Hospital                  | 7.0                    | 0.2                         | 7.0                               |
| Frankston Hospital                  | 6.1                    | 0.3                         | 7.7                               |
| Maroondah Hospital                  | 3.5                    | 0.4                         | 6.2                               |
| Monash Medical Centre               | 10.7                   | 0.4                         | 10.7                              |
| Royal Melbourne Hospital            | 16.1                   | 0.3                         | 21.0                              |
| St Vincent's Hospital               | 9.2                    | 0.3                         | 9.2                               |
| The Alfred                          | 21.6                   | 0.2                         | 27.4                              |
| The Northern Hospital               | 5.0                    | 0.4                         | 8.1                               |
| Western Hospital                    | 6.3                    | 0.3                         | 9.4                               |
| <b>Other hospitals</b>              |                        |                             |                                   |
| Barwon Health                       | 7.3                    | 0.5                         | 13.3                              |
| <b>Total <sup>4</sup></b>           | <b>110.3</b>           | <b>3.5</b>                  | <b>143.1</b>                      |

<sup>1</sup> Based upon hospital census taken at 9:00 a.m. daily.

<sup>2</sup> Available beds are unoccupied beds which are staffed, functional and available to receive new patients.

<sup>3</sup> Total open beds are all functioning and staffed beds, regardless of whether they are occupied.

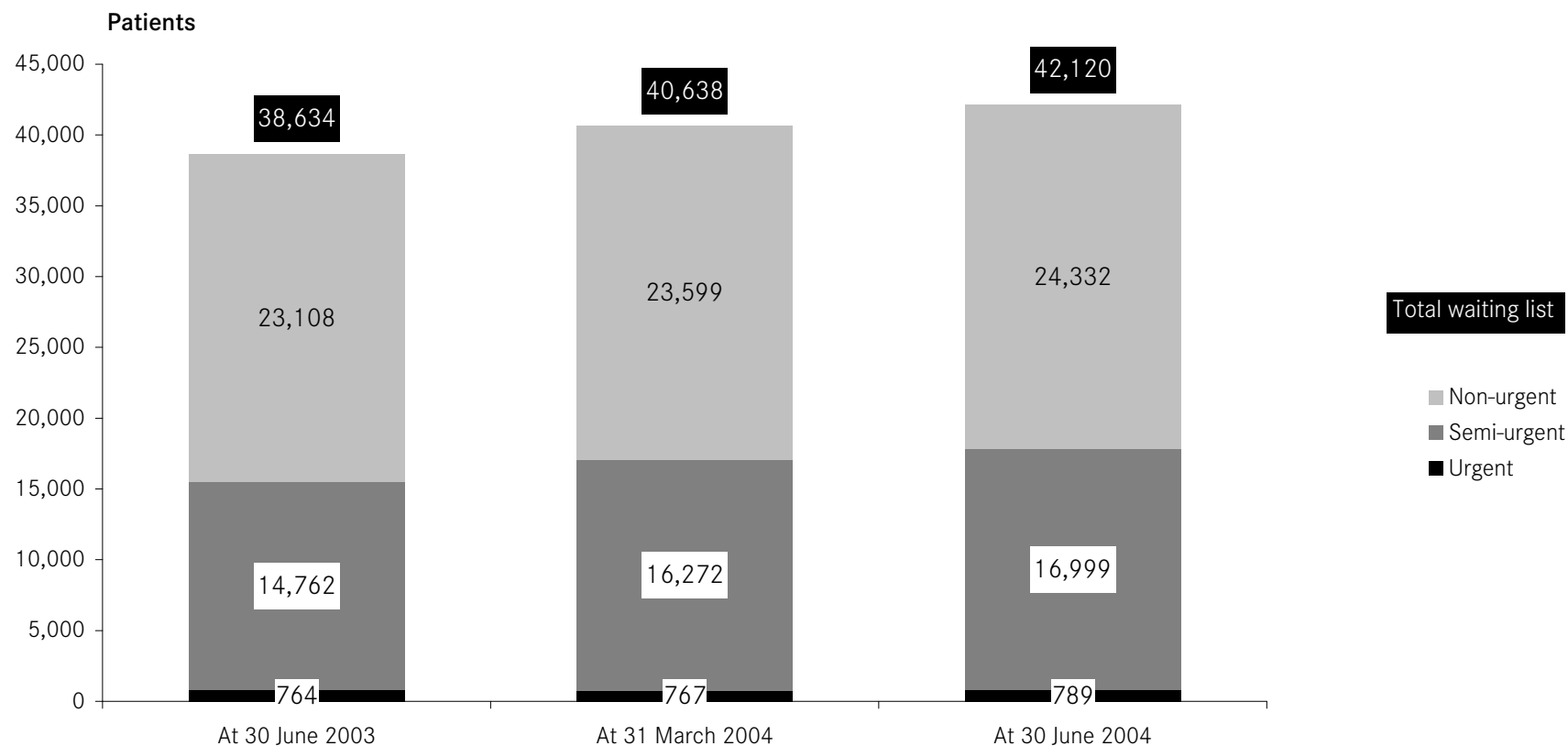
<sup>4</sup> The data in this table represents an average for the quarter and varies from tables 4.1 and 4.2 which are averages for each month.

Source: Victorian Adult Emergency Retrieval and Coordination Service.

## 5. Access to elective surgery

### How many people are on hospital waiting lists for elective surgery?

Fig 5.1 Waiting list by urgency<sup>1 2 3</sup>



<sup>1</sup> Waiting list numbers include all patients booked and waiting for elective surgery, in line with national definitions.

<sup>2</sup> The waiting list patient categories are:

- Urgent cases (waiting list category 1): Admission within 30 days desirable for a condition that has the potential to deteriorate quickly to the point it may become an emergency.
- Semi-urgent cases (waiting list category 2): Admission within 90 days desirable for a condition causing some pain, dysfunction or disability but which is not likely to deteriorate quickly or become an emergency.
- Non-urgent cases (waiting list category 3): Admission at some time in the future acceptable for a condition causing minimal or no pain, dysfunction or disability which is very unlikely to deteriorate quickly and which does not have the potential to become an emergency.

<sup>3</sup> 2003/2004 data are provisional.

Source: Elective surgery information system.

## How many people are on hospital waiting lists for elective surgery?

Table 5.1 Waiting lists by urgency, by individual hospital <sup>1 2 3</sup>

| Hospital                                 | Urgent cases |           |           | Semi-urgent cases |           |           | Non-urgent cases |           |           |
|------------------------------------------|--------------|-----------|-----------|-------------------|-----------|-----------|------------------|-----------|-----------|
|                                          | 30 Jun 03    | 31 Mar 04 | 30 Jun 04 | 30 Jun 03         | 31 Mar 04 | 30 Jun 04 | 30 Jun 03        | 31 Mar 04 | 30 Jun 04 |
| <b>Major metropolitan hospitals</b>      |              |           |           |                   |           |           |                  |           |           |
| Angliss Hospital                         | 42           | 16        | 29        | 231               | 207       | 300       | 222              | 200       | 366       |
| Austin Hospital                          | 69           | 36        | 50        | 1,148             | 1,410     | 1,546     | 1,200            | 1,139     | 1,237     |
| Box Hill Hospital                        | 42           | 46        | 34        | 603               | 767       | 812       | 830              | 930       | 986       |
| Dandenong Hospital                       | 42           | 43        | 34        | 1,229             | 1,466     | 1,587     | 2,024            | 1,885     | 1,913     |
| Frankston Hospital                       | 63           | 80        | 68        | 1,903             | 2,150     | 2,132     | 782              | 725       | 748       |
| Maroondah Hospital                       | 13           | 21        | 32        | 221               | 271       | 290       | 1,007            | 1,172     | 1,244     |
| Monash Medical Centre                    | 79           | 115       | 137       | 1,508             | 1,763     | 1,918     | 2,597            | 2,634     | 2,741     |
| Royal Melbourne Hospital                 | 60           | 37        | 40        | 1,091             | 1,002     | 1,033     | 1,593            | 1,499     | 1,613     |
| St Vincent's Hospital                    | 42           | 46        | 51        | 843               | 850       | 960       | 802              | 751       | 736       |
| Sunshine Hospital                        | 13           | 8         | 13        | 205               | 212       | 188       | 710              | 772       | 819       |
| The Alfred                               | 84           | 72        | 54        | 886               | 860       | 820       | 728              | 453       | 452       |
| The Northern Hospital                    | 49           | 29        | 33        | 1,055             | 887       | 869       | 1,921            | 1,515     | 1,354     |
| Western Hospital                         | 28           | 30        | 40        | 731               | 708       | 625       | 857              | 821       | 808       |
| <b>Other metropolitan hospitals</b>      |              |           |           |                   |           |           |                  |           |           |
| Mercy Public Hospital, East Melbourne    |              | 15        | 4         |                   | 67        | 71        |                  | 172       | 175       |
| Mercy Public Hospital, Werribee          |              |           |           |                   | 170       | 125       |                  | 116       | 77        |
| Royal Children's Hospital                | 17           | 22        | 28        | 174               | 275       | 264       | 1,362            | 1,561     | 1,822     |
| Royal Women's Hospital                   | 13           | 10        | 10        | 244               | 219       | 223       | 161              | 282       | 352       |
| Sandringham & District Memorial Hospital | 13           | 16        | 11        | 215               | 184       | 213       | 307              | 254       | 244       |
| The Royal Victorian Eye & Ear Hospital   | 12           | 16        | 21        | 423               | 365       | 433       | 1,381            | 1,827     | 1,828     |
| Williamstown Hospital                    |              | 8         | 5         |                   | 252       | 203       |                  | 414       | 388       |

<sup>1</sup> Waiting list numbers include all patients booked and waiting for elective surgery, in line with national definitions.

<sup>2</sup> 2003/2004 data are provisional

<sup>3</sup> Elective surgery data for Mercy Hospitals Inc, East Melbourne; Mercy Hospitals Inc, Werribee; and Williamstown Hospital are only available for 2003/2004. No data were available for FY 2002/2003.

Table 5.1 Waiting lists by urgency, by individual hospital (continued)

| Hospital                        | Urgent cases |            |            | Semi-urgent cases |               |               | Non-urgent cases |               |               |
|---------------------------------|--------------|------------|------------|-------------------|---------------|---------------|------------------|---------------|---------------|
|                                 | 30 Jun 03    | 31 Mar 04  | 30 Jun 04  | 30 Jun 03         | 31 Mar 04     | 30 Jun 04     | 30 Jun 03        | 31 Mar 04     | 30 Jun 04     |
| <b>Major regional hospitals</b> |              |            |            |                   |               |               |                  |               |               |
| Ballarat Health Services        |              | 2          | 14         | 216               | 241           | 240           | 882              | 708           | 656           |
| Barwon Health                   | 14           | 11         | 12         | 690               | 815           | 963           | 1,361            | 1,389         | 1,482         |
| Bendigo Health Care Group       | 23           | 38         | 25         | 427               | 468           | 483           | 687              | 736           | 760           |
| Goulburn Valley Health          | 25           | 23         | 19         | 278               | 231           | 259           | 209              | 119           | 123           |
| Latrobe Regional Hospital       | 12           | 13         | 9          | 159               | 140           | 151           | 621              | 535           | 522           |
| <b>Other rural hospitals</b>    |              |            |            |                   |               |               |                  |               |               |
| Northeast Health Wangaratta     | 1            | 3          | 3          | 83                | 82            | 60            | 403              | 551           | 544           |
| West Gippsland Healthcare Group | 8            | 11         | 13         | 199               | 210           | 231           | 461              | 439           | 342           |
| <b>Grand total</b>              | <b>764</b>   | <b>767</b> | <b>789</b> | <b>14,762</b>     | <b>16,272</b> | <b>16,999</b> | <b>23,108</b>    | <b>23,599</b> | <b>24,332</b> |

Source: Elective surgery information system.

## What is the throughput of people waiting for elective surgery?

Table 5.2 Admissions and cancellations, by individual hospital <sup>1 2 3 4</sup>

| Hospital                                 | Patients on waiting lists |              |              | Admissions from waiting lists |           |           | Patients cancelled <sup>4</sup> from waiting lists |           |           |
|------------------------------------------|---------------------------|--------------|--------------|-------------------------------|-----------|-----------|----------------------------------------------------|-----------|-----------|
|                                          | at 30 Jun 03              | at 31 Mar 04 | at 30 Jun 04 | During the quarter            |           |           | During the quarter                                 |           |           |
|                                          |                           |              |              | 30 Jun 03                     | 31 Mar 04 | 30 Jun 04 | 30 Jun 03                                          | 31 Mar 04 | 30 Jun 04 |
| <b>Major metropolitan hospitals</b>      |                           |              |              |                               |           |           |                                                    |           |           |
| Angliss Hospital                         | 495                       | 423          | 695          | 853                           | 781       | 742       | 50                                                 | 69        | 94        |
| Austin Hospital                          | 2,417                     | 2,585        | 2,833        | 2,084                         | 1,645     | 1,462     | 388                                                | 301       | 348       |
| Box Hill Hospital                        | 1,475                     | 1,743        | 1,832        | 1,463                         | 810       | 1,164     | 234                                                | 152       | 253       |
| Dandenong Hospital                       | 3,295                     | 3,394        | 3,534        | 1,548                         | 1,422     | 1,402     | 259                                                | 268       | 209       |
| Frankston Hospital                       | 2,748                     | 2,955        | 2,948        | 1,551                         | 1,320     | 1,381     | 351                                                | 301       | 332       |
| Maroondah Hospital                       | 1,241                     | 1,464        | 1,566        | 816                           | 810       | 823       | 127                                                | 181       | 133       |
| Monash Medical Centre                    | 4,184                     | 4,512        | 4,796        | 2,128                         | 1,902     | 1,743     | 290                                                | 341       | 439       |
| Royal Melbourne Hospital                 | 2,744                     | 2,538        | 2,686        | 1,719                         | 1,585     | 1,588     | 387                                                | 393       | 350       |
| St Vincent's Hospital                    | 1,687                     | 1,647        | 1,747        | 1,034                         | 1,105     | 1,180     | 206                                                | 256       | 223       |
| Sunshine Hospital                        | 928                       | 992          | 1,020        | 1,170                         | 890       | 1,087     | 140                                                | 172       | 195       |
| The Alfred                               | 1,698                     | 1,385        | 1,326        | 1,344                         | 1,202     | 1,328     | 385                                                | 370       | 342       |
| The Northern Hospital                    | 3,025                     | 2,431        | 2,256        | 1,311                         | 1,488     | 1,795     | 213                                                | 191       | 291       |
| Western Hospital                         | 1,616                     | 1,559        | 1,473        | 985                           | 886       | 948       | 257                                                | 215       | 218       |
| <b>Other metropolitan hospitals</b>      |                           |              |              |                               |           |           |                                                    |           |           |
| Mercy Public Hospital, East Melbourne    |                           | 254          | 250          |                               | 390       | 424       |                                                    | 54        | 40        |
| Mercy Public Hospital, Werribee          |                           | 286          | 202          |                               | 972       | 996       |                                                    | 18        | 141       |
| Royal Children's Hospital                | 1,553                     | 1,858        | 2,114        | 2,562                         | 2,307     | 2,418     | 205                                                | 139       | 164       |
| Royal Women's Hospital                   | 418                       | 511          | 585          | 619                           | 608       | 504       | 137                                                | 103       | 107       |
| Sandringham & District Memorial Hospital | 535                       | 454          | 468          | 508                           | 508       | 597       | 99                                                 | 125       | 99        |
| The Royal Victorian Eye & Ear Hospital   | 1,816                     | 2,208        | 2,282        | 2,928                         | 2,456     | 3,002     | 275                                                | 223       | 265       |
| Williamstown Hospital                    |                           | 674          | 596          |                               | 1,083     | 1,227     |                                                    | 180       | 125       |

<sup>1</sup> Waiting list numbers include all patients booked and waiting for elective surgery, in line with national definitions.

<sup>2</sup> 2003/2004 data are provisional.

<sup>3</sup> Mercy Hospitals Inc, East Melbourne; Mercy Hospitals Inc, Werribee; and Williamstown Hospital qualified to report elective surgery data from September 2003. No data were available for FY 2002/2003.

<sup>4</sup> Patients removed from the waiting list through a process other than admitted for surgery.

Table 5.2 Admissions and cancellations, by individual hospital (continued)

| Hospital                        | Patients on waiting lists |               |               | Admissions from waiting lists |               |               | Patients cancelled <sup>4</sup> from waiting lists |              |              |
|---------------------------------|---------------------------|---------------|---------------|-------------------------------|---------------|---------------|----------------------------------------------------|--------------|--------------|
|                                 | at 30 Jun 03              | at 31 Mar 04  | at 30 Jun 04  | During the quarter            |               |               | During the quarter                                 |              |              |
|                                 |                           |               |               | 30 Jun 03                     | 31 Mar 04     | 30 Jun 04     | 30 Jun 03                                          | 31 Mar 04    | 30 Jun 04    |
| <b>Major regional hospitals</b> |                           |               |               |                               |               |               |                                                    |              |              |
| Ballarat Health Services        | 1,098                     | 951           | 910           | 560                           | 592           | 711           | 141                                                | 85           | 133          |
| Barwon Health                   | 2,065                     | 2,215         | 2,457         | 1,334                         | 1,084         | 1,001         | 228                                                | 268          | 162          |
| Bendigo Health Care Group       | 1,137                     | 1,242         | 1,268         | 1,065                         | 940           | 1,058         | 99                                                 | 73           | 78           |
| Goulburn Valley Health          | 512                       | 373           | 401           | 728                           | 705           | 628           | 87                                                 | 87           | 99           |
| Latrobe Regional Hospital       | 792                       | 688           | 682           | 945                           | 946           | 1,025         | 99                                                 | 109          | 77           |
| <b>Other rural hospitals</b>    |                           |               |               |                               |               |               |                                                    |              |              |
| Northeast Health Wangaratta     | 487                       | 636           | 607           | 501                           | 494           | 553           | 68                                                 | 54           | 51           |
| West Gippsland Healthcare Group | 668                       | 660           | 586           | 576                           | 462           | 510           | 37                                                 | 68           | 139          |
| <b>Grand total</b>              | <b>38,634</b>             | <b>40,638</b> | <b>42,120</b> | <b>30,332</b>                 | <b>29,393</b> | <b>31,297</b> | <b>4,762</b>                                       | <b>4,796</b> | <b>5,107</b> |

Source: Elective surgery information system.

## How may people are on hospital waiting lists for longer than the ideal time?

Table 5.3 People on elective surgery waiting lists for longer than ideal time, by Individual Hospital <sup>1 2 3</sup>

| Hospital                                 | Urgent cases waiting over 30 days |           |           | Semi-urgent cases waiting over 90 days |           |           |
|------------------------------------------|-----------------------------------|-----------|-----------|----------------------------------------|-----------|-----------|
|                                          | 30 Jun 03                         | 31 Mar 04 | 30 Jun 04 | 30 Jun 03                              | 31 Mar 04 | 30 Jun 04 |
| <b>Major metropolitan hospitals</b>      |                                   |           |           |                                        |           |           |
| Angliss Hospital                         | 0                                 | 0         | 0         | 0                                      | 0         | 4         |
| Austin Hospital                          | 0                                 | 0         | 0         | 435                                    | 704       | 844       |
| Box Hill Hospital                        | 0                                 | 0         | 0         | 78                                     | 210       | 235       |
| Dandenong Hospital                       | 0                                 | 0         | 0         | 808                                    | 1,024     | 1,079     |
| Frankston Hospital                       | 0                                 | 0         | 0         | 1,092                                  | 1,353     | 1,301     |
| Maroondah Hospital                       | 0                                 | 0         | 0         | 32                                     | 42        | 92        |
| Monash Medical Centre                    | 0                                 | 0         | 0         | 684                                    | 931       | 1,049     |
| Royal Melbourne Hospital                 | 0                                 | 0         | 0         | 488                                    | 490       | 495       |
| St Vincent's Hospital                    | 0                                 | 0         | 0         | 293                                    | 335       | 360       |
| Sunshine Hospital                        | 0                                 | 0         | 0         | 29                                     | 48        | 15        |
| The Alfred                               | 0                                 | 0         | 0         | 368                                    | 355       | 349       |
| The Northern Hospital                    | 0                                 | 0         | 0         | 382                                    | 270       | 215       |
| Western Hospital                         | 0                                 | 0         | 1         | 303                                    | 312       | 295       |
| <b>Other metropolitan hospitals</b>      |                                   |           |           |                                        |           |           |
| Mercy Public Hospital, East Melbourne    | 0                                 | 0         | 0         | 0                                      | 0         | 2         |
| Mercy Public Hospital, Werribee          | 0                                 | 0         | 0         | 0                                      | 65        | 13        |
| Royal Children's Hospital                | 0                                 | 0         | 0         | 0                                      | 0         | 0         |
| Royal Women's Hospital                   | 0                                 | 0         | 0         | 0                                      | 0         | 0         |
| Sandringham & District Memorial Hospital | 0                                 | 0         | 0         | 54                                     | 15        | 30        |
| The Royal Victorian Eye & Ear Hospital   | 0                                 | 0         | 0         | 29                                     | 25        | 24        |
| Williamstown Hospital                    | 0                                 | 0         | 0         | 0                                      | 38        | 28        |

<sup>1</sup> Waiting list numbers include all patients booked and waiting for elective surgery, in line with national definitions.

<sup>2</sup> 2003/2004 data are provisional.

<sup>3</sup> Elective surgery data for Mercy Hospitals Inc, East Melbourne; Mercy Hospitals Inc, Werribee; and Williamstown Hospital are only available for 2003/2004. No data were available for FY 2002/2003.

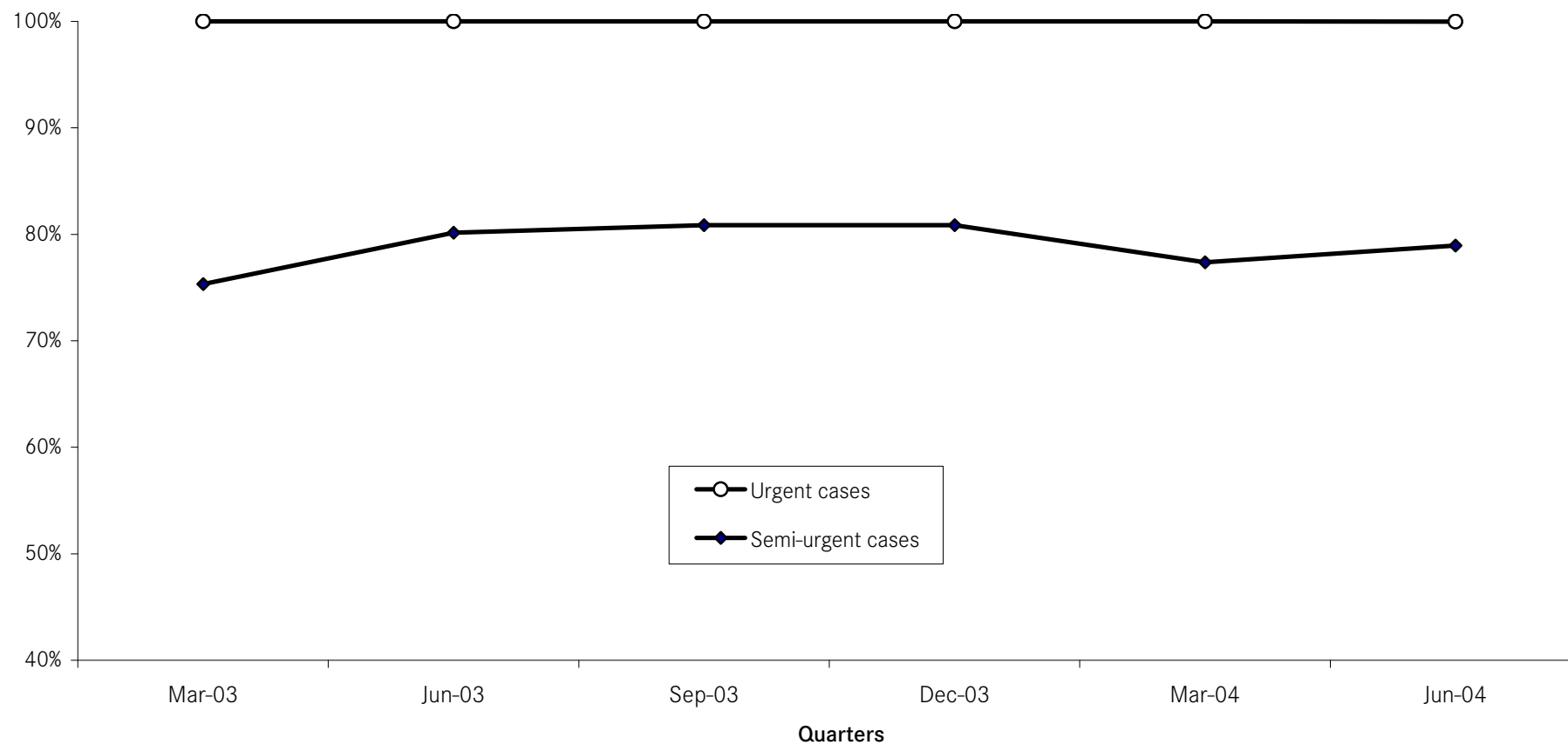
**Table 5.3 People on elective surgery waiting lists for longer than ideal time, by individual hospital (continued)**

| Hospital                        | Urgent cases waiting over 30 days |           |           | Semi-urgent cases waiting over 90 days |              |              |
|---------------------------------|-----------------------------------|-----------|-----------|----------------------------------------|--------------|--------------|
|                                 | 30 Jun 03                         | 31 Mar 04 | 30 Jun 04 | 30 Jun 03                              | 31 Mar 04    | 30 Jun 04    |
| <b>Major regional hospitals</b> |                                   |           |           |                                        |              |              |
| Ballarat Health Services        | 0                                 | 0         | 0         | 82                                     | 74           | 78           |
| Barwon Health                   | 0                                 | 0         | 0         | 287                                    | 406          | 453          |
| Bendigo Health Care Group       | 0                                 | 0         | 0         | 229                                    | 229          | 283          |
| Goulburn Valley Health          | 0                                 | 0         | 0         | 40                                     | 21           | 45           |
| Latrobe Regional Hospital       | 0                                 | 0         | 0         | 13                                     | 0            | 0            |
| <b>Other rural hospitals</b>    |                                   |           |           |                                        |              |              |
| Northeast Health Wangaratta     | 0                                 | 0         | 0         | 7                                      | 4            | 3            |
| West Gippsland Healthcare Group | 0                                 | 0         | 0         | 33                                     | 64           | 64           |
| <b>Grand total</b>              | <b>0</b>                          | <b>0</b>  | <b>1</b>  | <b>5,766</b>                           | <b>7,015</b> | <b>7,356</b> |

Source: Elective surgery information system.

## What percentage of patients are admitted within clinically ideal times?

Fig 5.2 Percentage of patients from elective surgery waiting lists who were admitted within the ideal time, by urgency <sup>1</sup>



<sup>1</sup> 2003/2004 data are provisional.

Source: Elective surgery information system.

## What percentage of patients are admitted within clinically ideal times?

Table 5.4 Percentage of people from elective surgery waiting lists who were admitted within the ideal time, by urgency, by individual hospital <sup>1 2</sup>

| Hospital                                 | Urgent cases admitted within 30 days during the quarter |            |           |            | Semi-urgent cases admitted within 90 days during the quarter |            |           |            |
|------------------------------------------|---------------------------------------------------------|------------|-----------|------------|--------------------------------------------------------------|------------|-----------|------------|
|                                          | March 2004                                              |            | June 2004 |            | March 2004                                                   |            | June 2004 |            |
|                                          | Numbers                                                 | Percentage | Numbers   | Percentage | Numbers                                                      | Percentage | Numbers   | Percentage |
| <b>Major metropolitan hospitals</b>      |                                                         |            |           |            |                                                              |            |           |            |
| Angliss Hospital                         | 111                                                     | 100.0%     | 126       | 100.0%     | 396                                                          | 99.5%      | 371       | 98.7%      |
| Austin Hospital                          | 630                                                     | 100.0%     | 694       | 100.0%     | 428                                                          | 59.3%      | 341       | 60.9%      |
| Box Hill Hospital                        | 258                                                     | 100.0%     | 304       | 100.0%     | 287                                                          | 67.8%      | 459       | 67.0%      |
| Dandenong Hospital                       | 323                                                     | 100.0%     | 327       | 100.0%     | 274                                                          | 59.1%      | 255       | 56.8%      |
| Frankston Hospital                       | 343                                                     | 100.0%     | 348       | 99.7%      | 380                                                          | 49.0%      | 409       | 49.3%      |
| Maroondah Hospital                       | 215                                                     | 100.0%     | 245       | 100.0%     | 230                                                          | 83.0%      | 208       | 77.0%      |
| Monash Medical Centre                    | 669                                                     | 100.0%     | 748       | 100.0%     | 618                                                          | 69.3%      | 478       | 63.6%      |
| Royal Melbourne Hospital                 | 666                                                     | 100.0%     | 724       | 100.0%     | 369                                                          | 58.0%      | 363       | 61.9%      |
| St Vincent's Hospital                    | 280                                                     | 100.0%     | 299       | 100.0%     | 447                                                          | 63.7%      | 505       | 67.4%      |
| Sunshine Hospital                        | 86                                                      | 100.0%     | 93        | 100.0%     | 235                                                          | 83.3%      | 347       | 91.1%      |
| The Alfred                               | 504                                                     | 100.0%     | 509       | 100.0%     | 395                                                          | 70.2%      | 472       | 69.3%      |
| The Northern Hospital                    | 273                                                     | 100.0%     | 306       | 100.0%     | 516                                                          | 63.5%      | 642       | 69.7%      |
| Western Hospital                         | 183                                                     | 100.0%     | 253       | 100.0%     | 303                                                          | 61.7%      | 289       | 64.9%      |
| <b>Other metropolitan hospitals</b>      |                                                         |            |           |            |                                                              |            |           |            |
| Mercy Public Hospital, East Melbourne    | 83                                                      | 100.0%     | 85        | 100.0%     | 136                                                          | 96.5%      | 121       | 97.6%      |
| Mercy Public Hospital, Werribee          | 13                                                      | 100.0%     | 11        | 100.0%     | 527                                                          | 99.4%      | 660       | 99.5%      |
| Royal Children's Hospital                | 432                                                     | 100.0%     | 362       | 100.0%     | 587                                                          | 100.0%     | 592       | 100.0%     |
| Royal Women's Hospital                   | 98                                                      | 100.0%     | 78        | 100.0%     | 398                                                          | 100.0%     | 337       | 100.0%     |
| Sandringham & District Memorial Hospital | 99                                                      | 100.0%     | 119       | 100.0%     | 258                                                          | 90.5%      | 303       | 91.3%      |
| The Royal Victorian Eye & Ear Hospital   | 161                                                     | 100.0%     | 197       | 100.0%     | 1,337                                                        | 95.1%      | 1,630     | 96.1%      |
| Williamstown Hospital                    | 70                                                      | 100.0%     | 90        | 100.0%     | 601                                                          | 96.0%      | 631       | 95.9%      |

<sup>1</sup> 2003/2004 data are provisional.

<sup>2</sup> Elective surgery data for Mercy Hospitals Inc, East Melbourne; Mercy Hospitals Inc, Werribee; and Williamstown Hospital are only available for 2003/ 2004. No data were available for FY 2002 / 2003.

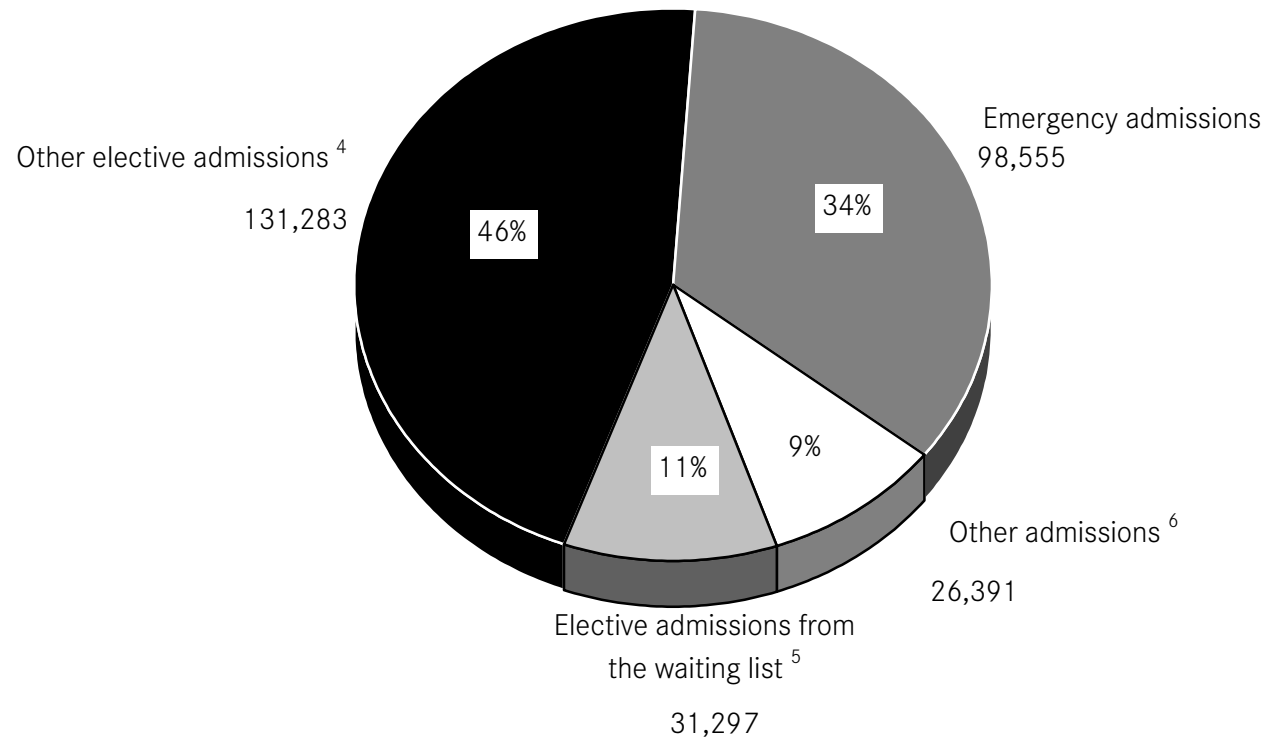
Table 5.4 Percentage of people from elective surgery waiting lists who were admitted within the ideal time, by urgency, by individual hospital (continued)

| Hospital                        | Urgent cases admitted within 30 days during the quarter |               |              |               | Semi-urgent cases admitted within 90 days during the quarter |              |               |              |
|---------------------------------|---------------------------------------------------------|---------------|--------------|---------------|--------------------------------------------------------------|--------------|---------------|--------------|
|                                 | March 2004                                              |               | June 2004    |               | March 2004                                                   |              | June 2004     |              |
|                                 | Numbers                                                 | Percentage    | Numbers      | Percentage    | Numbers                                                      | Percentage   | Numbers       | Percentage   |
| <b>Major regional hospitals</b> |                                                         |               |              |               |                                                              |              |               |              |
| Ballarat Health Services        | 60                                                      | 100.0%        | 69           | 100.0%        | 228                                                          | 82.0%        | 304           | 88.9%        |
| Barwon Health                   | 62                                                      | 100.0%        | 103          | 99.0%         | 450                                                          | 72.9%        | 421           | 76.1%        |
| Bendigo Health Care Group       | 191                                                     | 100.0%        | 193          | 100.0%        | 226                                                          | 70.0%        | 220           | 67.9%        |
| Goulburn Valley Health          | 194                                                     | 100.0%        | 155          | 100.0%        | 337                                                          | 86.6%        | 309           | 86.3%        |
| Latrobe Regional Hospital       | 98                                                      | 100.0%        | 112          | 100.0%        | 342                                                          | 98.0%        | 381           | 98.7%        |
| <b>Other rural hospitals</b>    |                                                         |               |              |               |                                                              |              |               |              |
| Northeast Health Wangaratta     | 27                                                      | 100.0%        | 52           | 100.0%        | 189                                                          | 93.1%        | 206           | 96.7%        |
| West Gippsland Healthcare Group | 96                                                      | 100.0%        | 96           | 100.0%        | 176                                                          | 80.0%        | 189           | 82.5%        |
| <b>Grand total</b>              | <b>6,225</b>                                            | <b>100.0%</b> | <b>6,698</b> | <b>100.0%</b> | <b>10,670</b>                                                | <b>77.4%</b> | <b>11,443</b> | <b>79.0%</b> |

Source: Elective surgery information system.

## What is the admission source of total hospital activity?

Fig 5.3 Separations by admission type: June quarter 2004 <sup>1 2 3</sup>



<sup>1</sup> Percentages may not add to 100% due to rounding.

<sup>2</sup> 2003/04 data are provisional

<sup>3</sup> Data refer to the number of WIES-fundable separations only.

<sup>4</sup> Excludes patients admitted from the elective surgery waiting list.

<sup>5</sup> Patients admitted from the elective surgery waiting list during the quarter (ESIS).

<sup>6</sup> Includes maternity, newborn and statistical (change in patient care type) admissions.

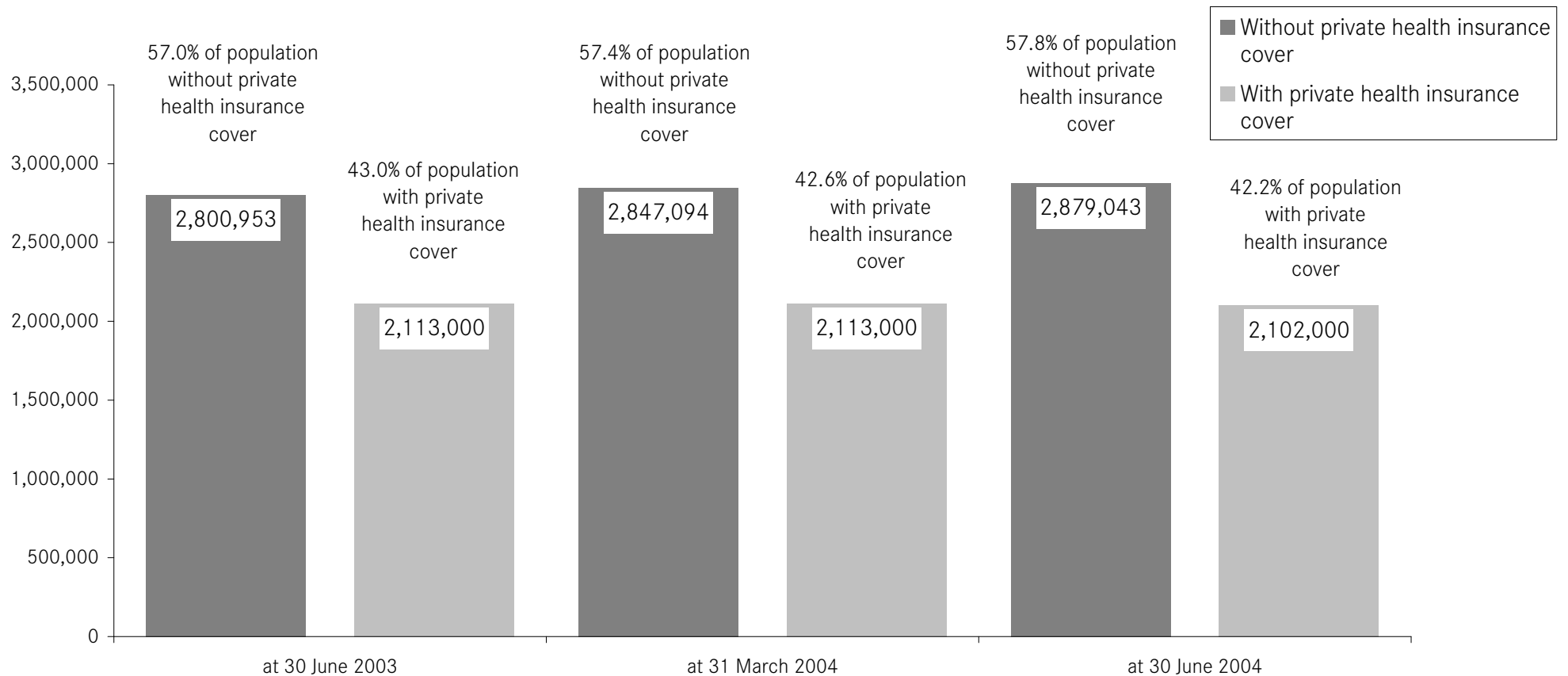
Source: Victorian admitted episode dataset (27 September 2004 update).  
Elective surgery information system.

This page has been left blank intentionally.

## 6. Private health insurance

### How many Victorians have private health insurance hospital cover?

Fig 5.1 Health insurance status of Victorians <sup>1 2 3</sup>



<sup>1</sup> Data are for all people covered by insurance, that is, contributors, partners and dependants.

<sup>2</sup> Data for current and previous quarters are provisional.

<sup>3</sup> Statistics reflect total persons covered by any level of hospital private health insurance.

Source: Private Health Insurance Administration Council (5 October 2004).

This page has been left blank intentionally.

## 7. Glossary

### What do the terms used in this report mean?

#### **Admitted patient**

Someone who is an inpatient in a hospital. Sameday patients who are admitted for less than 24 hours are also counted as inpatients but people who attend hospital for outpatient clinics are not.

#### **Cancellation**

The request for elective surgery has been withdrawn and the patient is removed from this hospital's Waiting List without admission for the awaited procedure. This can occur for clinical reasons, transfer of the patient to another hospital, or at the request of the patient.

#### **Casemix funded**

A system of funding hospitals according to the actual number and type of services that they provide. Casemix funding was introduced for most Victorian public hospitals in July 1993.

#### **Coronary care**

A hospital unit with specialised staff and equipment to care for patients with heart disease.

#### **Elective admission**

A planned admission to hospital. Emergency admissions and transfers from other hospitals are not counted as elective admissions.

#### **Elective surgery**

Planned surgery that is not an emergency requiring hospital admission within 24 hours.

#### **Emergency admission**

An unplanned admission to hospital due to unexpected illness or injury that requires urgent care.

#### **Emergency department**

A hospital department that specialises in providing emergency care for people who are in need of urgent care (ambulance cases for example) and people who choose to seek treatment in an emergency department.

#### **Intensive care**

A hospital unit with specialised staff and equipment to provide continuous care for critically ill, injured or post-operative patients.

#### **Major metropolitan hospitals**

Include Angliss Hospital, Austin Hospital (Austin Hospital & Heidelberg Repatriation Hospital), Box Hill Hospital, Dandenong Hospital, Frankston Hospital, Maroondah Hospital, Monash Medical Centre (Clayton Campus & Moorabbin Campus), Royal Melbourne Hospital, St Vincent's Hospital, Sunshine Hospital, The Alfred, The Northern Hospital and Western Hospital.

#### **Separation**

When an admitted patient leaves a hospital. This is the technical way of counting the number of admitted patients treated by a hospital.

#### **Step down bed**

Hospitals with specialised staff and equipment to care for patients who no longer need coronary or intensive care but are not yet ready to move to a general hospital ward.

#### **Transfer**

When an inpatient is moved from one hospital to another. This might be in order to obtain a specialised treatment not available at the first hospital or because of the patient's preferences.

#### **Waiting list hospital**

A major public hospital that performs elective surgery for public patients and uses a waiting list to properly keep track of people who require elective surgery.