

Hospital Services Report

June quarter 2002

Notes

This document contains the most up-to-date information available at the time of preparation.

This *Hospital Services Report* is available on the Department of Human Services Internet site located at:

<http://www.health.vic.gov.au/hsr/index.htm>

Design and production by Department of Human Services, Melbourne, Victoria.

June 2002

© Copyright Department of Human Services 2002.

This publication is copyright. No part may be reproduced by any process except in accordance with the provisions of the *Copyright Act 1968*.

Contents

<i>Introduction</i>	1
1. Patients waiting for residential aged care placement	2
2. Hospital admitted patient activity	4
3. Access to emergency services	6
4. Access to critical care services	15
5. Access to elective surgery	17
6. Private health insurance	28
7. Glossary	29

Introduction

Consumers, health care providers and government all need information on the quality of health services. Public access to information assists consumers to understand the health care system, it assists providers of health services in planning and increases the accountability of the Department of Human Services to the people in the state of Victoria, Australia.

The *Hospital Services Report* was introduced in 1995. This edition includes data for the June quarter 2002, which covers the months of April, May and June.

The information included in this report is often requested from the Department. Since technical information of this nature is very difficult to interpret, each graph and table needs to be carefully considered in the context of the complexity of the health care system. Department staff, hospital staff, general practitioners and other health care professionals may be able to assist you to interpret this report.

Access to Emergency Services

From 1 January 2002, emergency department data in this report are derived from electronic rather than paper-based reporting.

A number of graphs and tables refer to major metropolitan hospitals.

The major metropolitan hospitals include:

Angliss Hospital

Austin & Repatriation Medical Centre

- Austin campus

- Repatriation campus

Box Hill Hospital

Dandenong Hospital

Frankston Hospital

Maroondah Hospital

Monash Medical Centre

- Clayton campus

- Moorabbin campus

Royal Melbourne Hospital

St Vincent's Hospital

Sunshine Hospital

The Alfred

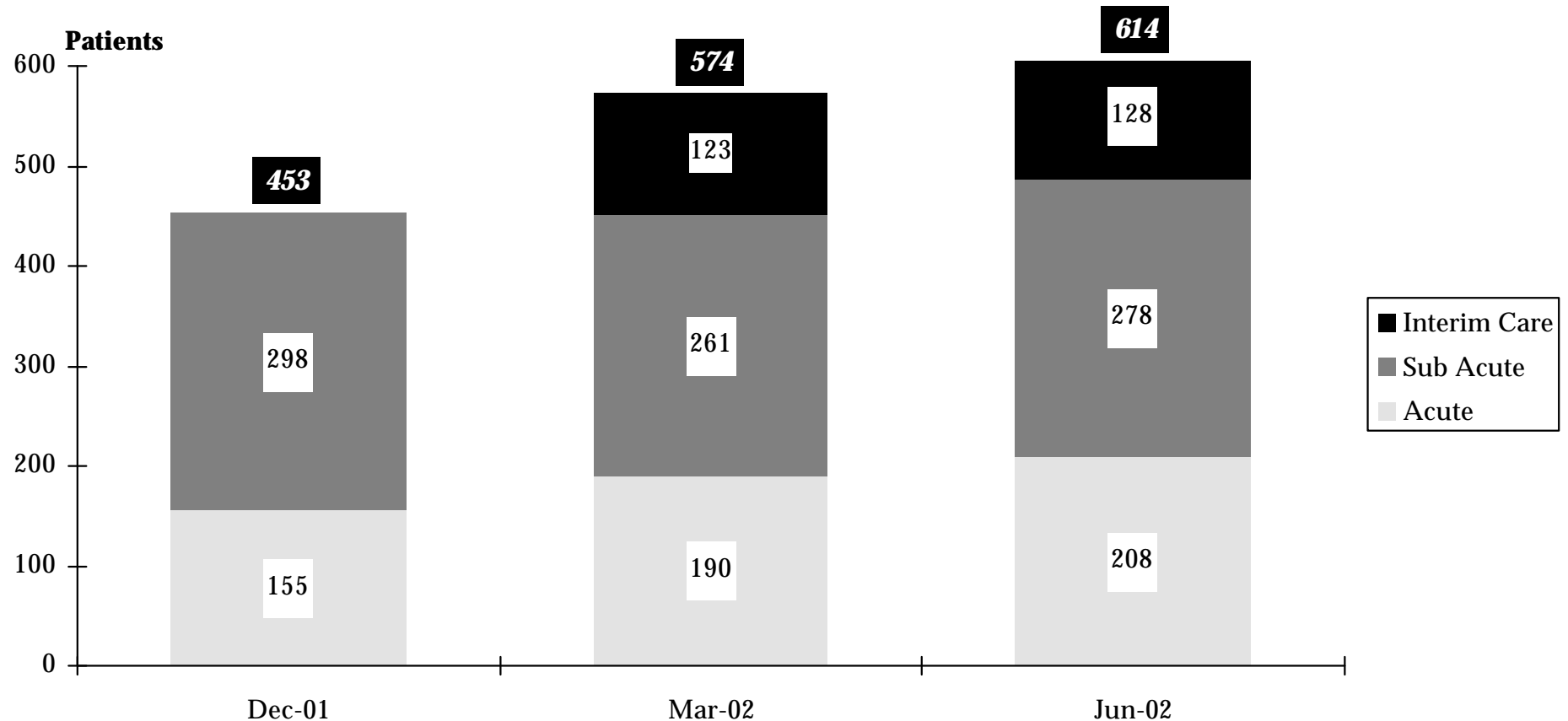
The Northern Hospital

Western Hospital

1. Patients waiting for residential aged care placement

How many patients are waiting for residential aged care placements?

Figure 1.1 Number of acute and sub acute patients waiting for residential aged care placement ^{1 2 3}



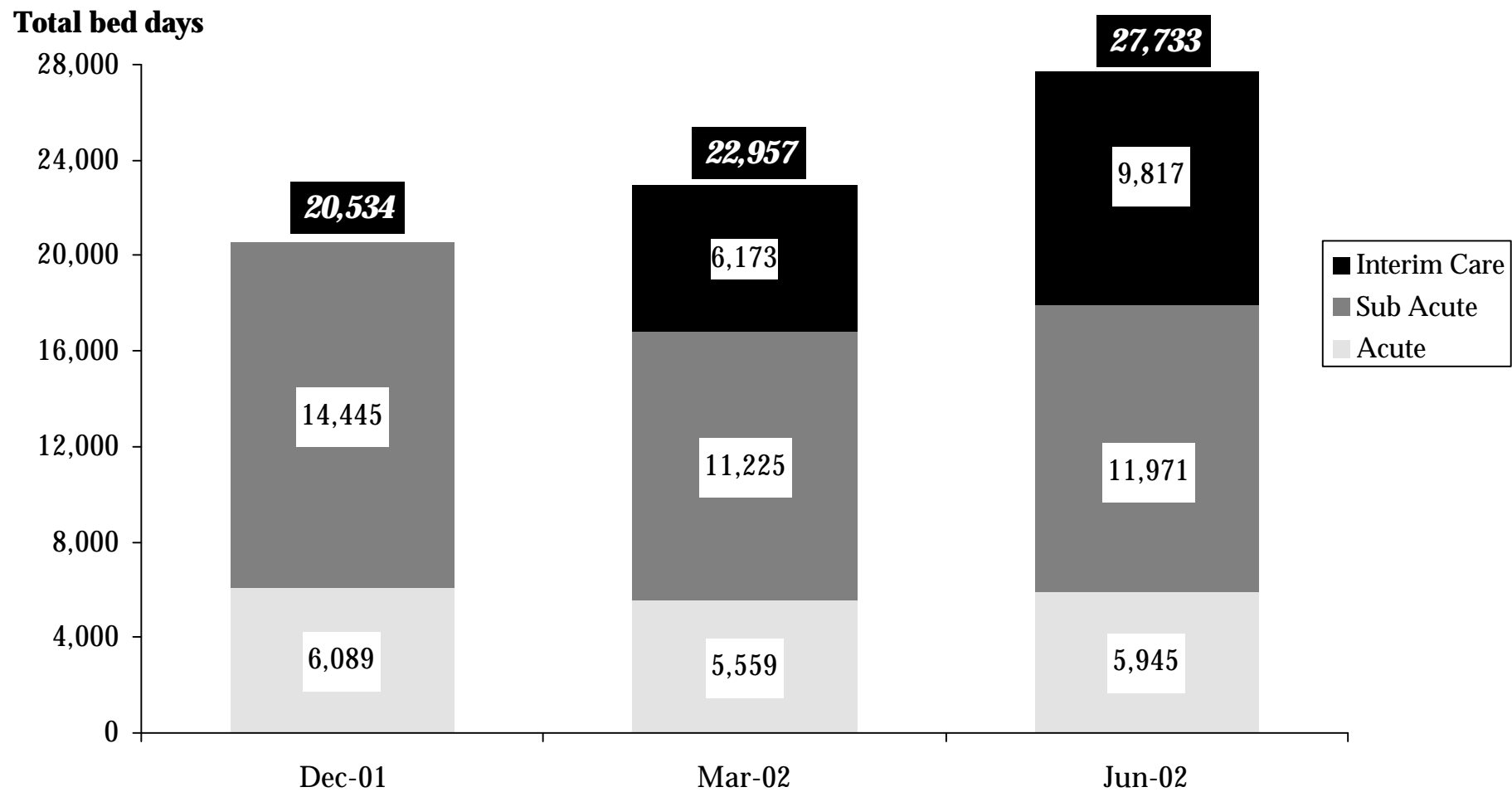
¹ Hospitals reporting sub acute are Angliss, Anne Caudle, Bundoora Extended Care, Bethlehem, Broadmeadows, Caritas Christi, Caulfield General, Dandenong, Goulburn Valley, Grace McKellar, Hampton, Kingston, Latrobe Regional, Maroondah, Mt Eliza, Melbourne Extended Care Rehabilitation Service, Peter James, Queen Elizabeth Centre, Royal Talbot, St George's, Sunshine and Williamstown.

² Hospitals reporting acute are The Alfred, Angliss, Austin & Repatriation, Ballarat, Barwon Health, Bendigo, Box Hill, Dandenong, Frankston, Goulburn Valley, Latrobe Regional, Maroondah, Monash Medical Centre (Clayton & Moorabbin), The Northern, Rosebud, Royal Melbourne, Sandringham, St Vincent's, Sunshine, Western and Williamstown.

³ Interim Care is a new type of care funded under the Hospital Demand Management Strategy at Eastern, Melbourne, Northern, Southern and Sisters of Charity Health Services. Interim Care provides patients who have completed their episodes of acute or sub-acute care with a less intensive service while appropriate long-term Commonwealth aged care accommodation is secured.

How many bed days are spent waiting for residential aged care placements?

Figure 1.2 Number of bed days patients wait for residential aged care placement ¹



¹ Notes for Figure 1.1 apply.

Source: Department of Human Services Bed Census.

2. Hospital Admitted Patient Activity

How many patients are admitted to hospital?

Table 2.1 Admitted patients by individual hospital^{1 2}

Hospital	June quarter 2001	March quarter 2002	June quarter 2002	% Change June 2001 to June 2002
Major metropolitan hospitals ³				
Angliss Hospital	5,733	5,269	5,709	-0.4%
Austin & Repatriation Medical Centre	16,007	16,160	17,139	7.1%
Box Hill Hospital	8,958	8,896	9,429	5.3%
Dandenong Hospital	7,112	6,956	7,407	4.1%
Frankston Hospital	9,964	9,895	10,240	2.8%
Maroondah Hospital	4,394	4,739	4,979	13.3%
Monash Medical Centre	19,749	18,763	19,229	-2.6%
Royal Melbourne Hospital	17,972	18,407	19,940	11.0%
St Vincent's Hospital ⁴	10,873	10,361	10,873	n.a.
Sunshine Hospital ⁵	4,263	6,896	7,968	86.9%
The Alfred	13,353	14,104	14,405	7.9%
The Northern Hospital	6,456	6,365	7,010	8.6%
Western Hospital ⁵	8,748	7,897	8,070	-7.8%
Other metropolitan hospitals				
Caulfield General Medical Centre	460	399	410	-10.9%
Mercy Public Hospital, East Melbourne	4,599	4,270	4,412	-4.1%
Peter MacCallum Cancer Institute	3,587	3,243	3,825	6.6%
Royal Children's Hospital ⁶	7,188	6,434	7,188	n.a.
Royal Women's Hospital	6,765	6,363	6,695	-1.0%
Sandringham & District Memorial Hospital	3,592	3,562	3,986	11.0%
The Royal Victorian Eye and Ear Hospital	3,199	2,769	3,257	1.8%
Other metropolitan hospitals	11,357	11,560	12,527	10.3%

¹ Data refer to the number of WIES-fundable separations (ie. the number of patients that have been discharged from hospital).

² 2001/2002 data are provisional.

³ Major metropolitan hospitals contain the campuses listed in the Introduction.

⁴ June quarter 2002 data for St Vincent's Hospital are currently not available. Estimates have been included for comparative purposes.

⁵ Change in activity is as a result of the opening of new beds at Sunshine since 2 July 2001.

⁶ March and June quarters 2002 data for Royal Children's Hospital are currently not available. Estimates have been included for comparative purposes.

Table 2.1 Admitted patients by individual hospital (continued)

Hospital	June quarter 2001	March quarter 2002	June quarter 2002	% Change June 2001 to June 2002
Major regional hospitals				
Ballarat Health Services	5,964	5,885	6,065	1.7%
Barwon Health	12,000	12,288	13,218	10.2%
Bendigo Health Care Group	5,312	5,327	6,022	13.4%
Goulburn Valley Health	4,369	4,596	4,858	11.2%
Latrobe Regional Hospital	5,417	5,523	5,465	0.9%
Other rural hospitals				
Central Gippsland Health Service	2,380	2,504	2,511	5.5%
South West Healthcare	3,377	3,341	3,660	8.4%
Wangaratta District Base Hospital	3,229	2,925	3,126	-3.2%
Wimmera Health Care Group	2,226	2,108	2,248	1.0%
Wodonga Regional Health Service	3,535	4,033	4,232	19.7%
Other rural hospitals	35,660	33,658	36,170	1.4%
Grand total	257,798	255,496	272,273	5.6%

Source: Victorian Admitted Episode Dataset (21 August 2002 update).

How many emergency patients are admitted to hospital?

Table 3.1 Emergency admissions^{1 2 3}

Hospital	June quarter 2001	March quarter 2002	June quarter 2002	% Change March 2002 to June 2002	% Change June 2001 to June 2002
Major metropolitan hospitals ⁴					
Angliss Hospital	2,211	2,042	2,146	5.1%	-2.9%
Austin and Repatriation Medical Centre	3,925	4,156	4,581	10.2%	16.7%
Box Hill Hospital	3,976	4,125	4,493	8.9%	13.0%
Dandenong Hospital	4,436	4,594	4,870	6.0%	9.8%
Frankston Hospital	5,298	5,365	5,548	3.4%	4.7%
Maroondah Hospital	2,564	2,928	3,018	3.1%	17.7%
Monash Medical Centre	6,692	6,166	6,026	-2.3%	-10.0%
Royal Melbourne Hospital	5,749	5,692	5,962	4.7%	3.7%
St Vincent's Hospital ⁵	3,525	3,772	3,525	n.a.	n.a.
Sunshine Hospital ⁶	1,119	3,359	3,937	17.2%	251.8%
The Alfred	5,331	6,027	5,614	-6.9%	5.3%
The Northern Hospital	3,313	3,389	3,665	8.1%	10.6%
Western Hospital ⁶	4,882	3,819	3,898	2.1%	-20.2%
Major hospitals total	53,021	55,434	57,283	3.3%	8.0%
Other hospitals total ⁷	34,651	34,254	36,727	7.2%	6.0%
Grand total	87,672	89,688	94,010	4.8%	7.2%

¹ 2001/2002 data are provisional.

² Data exclude elective, maternity, newborn and statistical admissions.

³ Data refer to the number of WIES-fundable separations (ie. the number of patients that have been discharged from hospital).

⁴ Major metropolitan hospitals include the campuses listed in the Introduction.

⁵ June quarter 2002 data are currently not available for St Vincent's Hospital. Estimates have been included for comparative purposes.

⁶ Changes in activity reflect the opening of an adult emergency department at Sunshine on 2 July 2001.

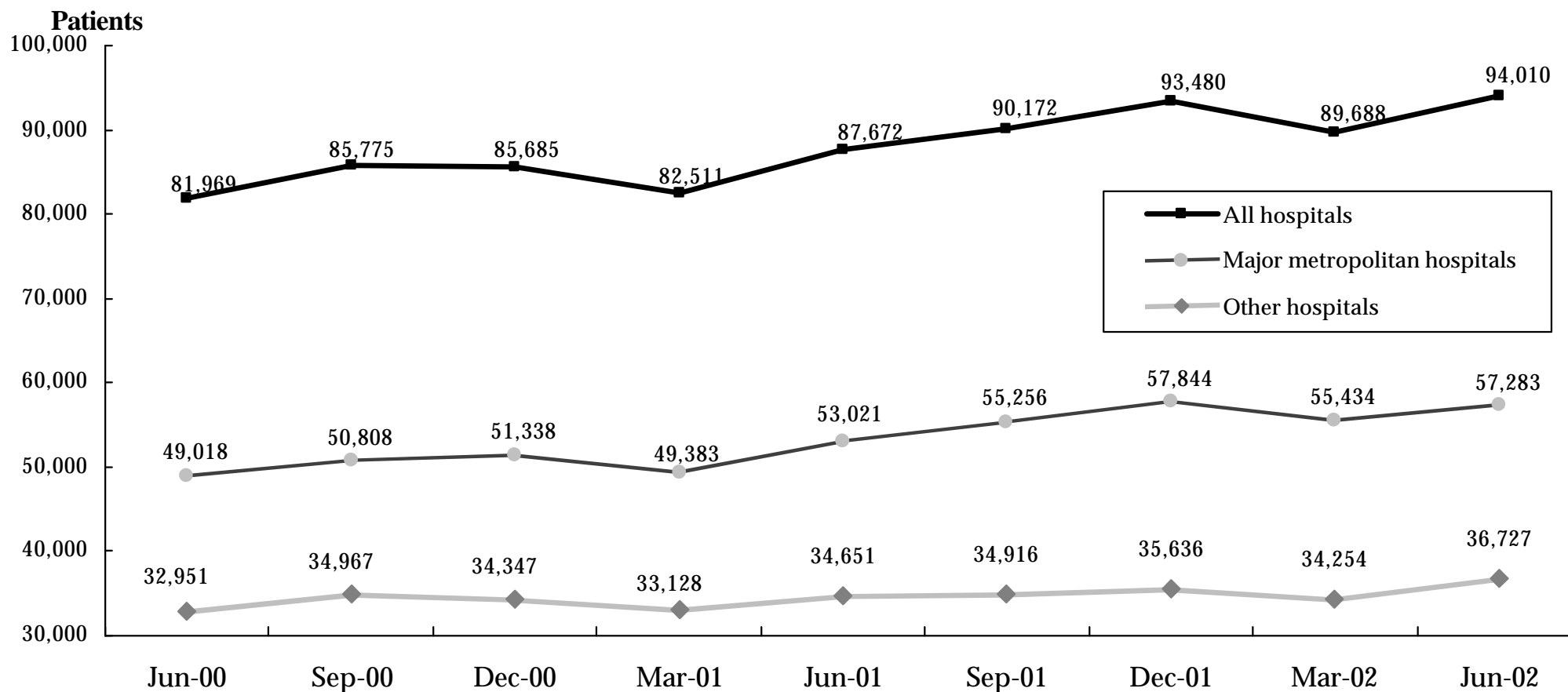
⁷ March and June quarters 2002 data are currently not available for Royal Children's Hospital. Estimates have been included for comparative purposes.

Source: Victorian Admitted Episode Dataset (21 August 2002 update).

3. Access to Emergency Services

How many emergency patients are admitted to hospital?

Figure 3.1 Patients admitted to public hospitals requiring emergency care^{1 2 3 4}



¹ Major metropolitan hospitals contain the campuses listed in the Introduction.

² Data refer to the number of WIES-fundable separations (ie. the number of patients that have been discharged from hospital).

³ 2001/2002 data are provisional.

⁴ March and June quarters 2002 data for Royal Children's Hospital and June quarter 2002 data for St Vincent's Hospital are currently not available. Estimates have been included for comparative purposes..

Source: Victorian Admitted Episode Dataset (21 August 2002 update).

How many patients are treated in each hospital emergency department?

Table 3.2 Patients treated in hospital emergency departments, by Individual Hospitals^{1 2}

Hospital	June quarter 2001	March quarter 2002	June quarter 2002	% Change June 2001 to June 2002
Major metropolitan hospitals ³				
Angliss Hospital	8,263	8,543	9,224	11.6%
Austin and Repatriation Medical Centre	8,801	9,227	10,083	14.6%
Box Hill Hospital	8,670	8,708	9,154	5.6%
Dandenong Hospital	9,721	10,598	11,307	16.3%
Frankston Hospital	9,617	9,928	10,701	11.3%
Maroondah Hospital	7,414	7,665	8,229	11.0%
Monash Medical Centre	12,385	12,328	13,392	8.1%
Royal Melbourne Hospital	11,038	11,982	11,915	7.9%
St Vincent's Hospital ⁴	7,418	7,788	7,825	n.a.
Sunshine Hospital ⁵	7,041	12,037	13,643	93.8%
The Alfred	9,066	9,387	9,257	2.1%
The Northern Hospital	10,738	11,193	11,525	7.3%
Western Hospital	10,210	7,596	7,328	-28.2%
Other metropolitan hospitals				
Royal Children's Hospital	13,868	12,223	16,242	17.1%
Major regional hospitals				
Ballarat Health Services	7,584	8,659	8,879	17.1%
Barwon Health	8,279	9,962	10,205	23.3%
Bendigo Health Care Group	7,936	7,786	7,675	-3.3%
Goulburn Valley Health	6,603	6,745	7,313	10.8%
Latrobe Regional Hospital	6,707	6,575	7,121	6.2%
Total ⁴	171,359	178,930	191,018	11.5%

¹ Data include all emergency department patients, that is, they include patients who are subsequently admitted to hospital and patients who are treated in the emergency department without being admitted to hospital.

² June quarter 2002 data are provisional.

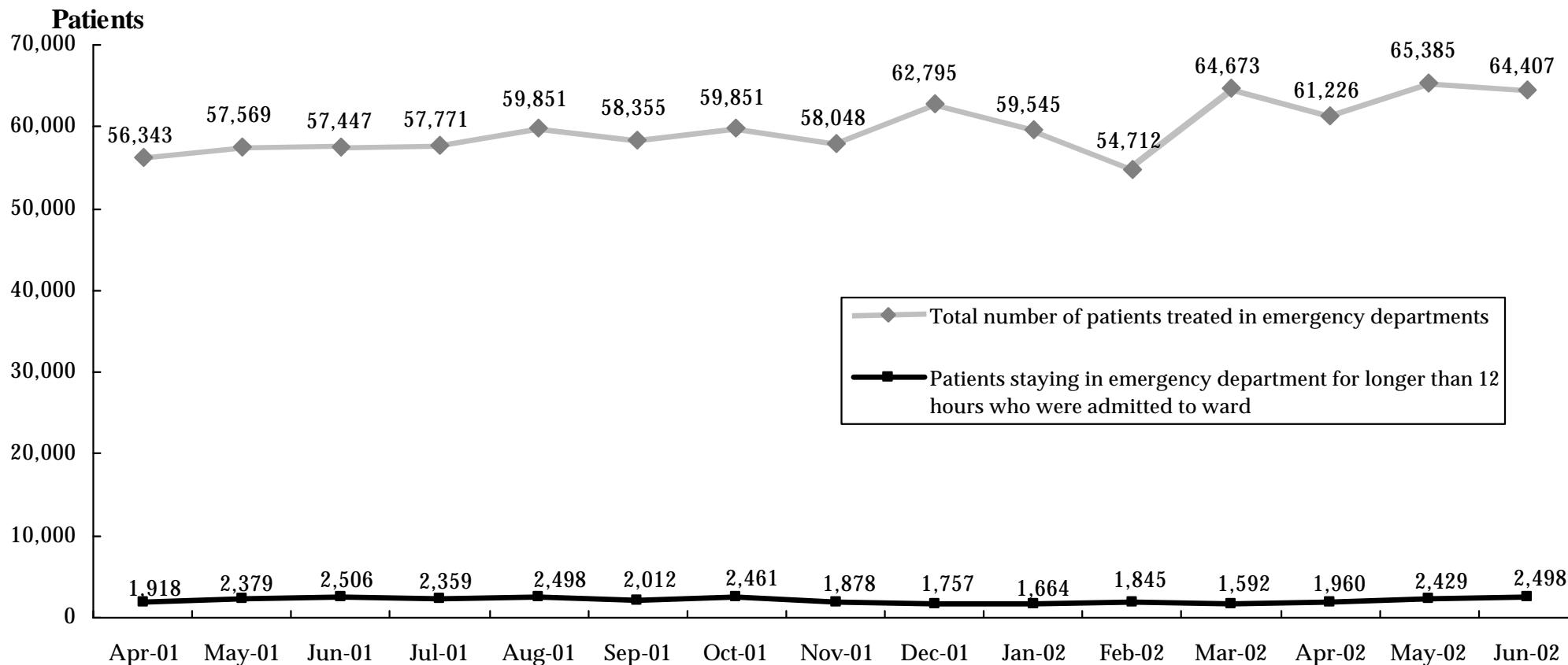
³ Major metropolitan hospitals include the campuses listed in the Introduction.

⁴ June quarter 2002 data are currently not available for St Vincent's Hospital. Estimates have been included for comparative purposes.

⁵ Changes in activity reflect the opening of a new adult emergency department at Sunshine Hospital on 2 July 2001.

How many patients stay for an extended period in the emergency department?

Figure 3.2 Patients staying in emergency departments for over 12 hours while waiting for a hospital bed ^{1 2 3 4}



¹ The period of 'stay' is calculated from the time the patient arrives in the emergency department to the time when the patient leaves the emergency department.

² Patients treated in DHS sponsored Chest Pain Evaluation Area Pilots are excluded from these figures – up to 30 June 2001.

³ A new adult emergency department opened at Sunshine Hospital on 2 July 2001.

⁴ June quarter 2002 data are provisional.

Source: Pre-January 2002 – Hospital Access Program reports
Post-January 2002 – Victorian Emergency Minimum Dataset.

Table 3.3 Patients staying in selected public hospital emergency departments for over 12 hours while waiting for a hospital bed^{1 2 3 4}

Hospital	June quarter 2001		March quarter 2002		June quarter 2002	
	Numbers	Percentage	Numbers	Percentage	Numbers	Percentage
Major metropolitan hospitals ⁵						
Angliss Hospital	184	13.8%	86	6.9%	123	8.9%
Austin and Repatriation Medical Centre	660	26.7%	296	10.2%	422	12.6%
Box Hill Hospital	366	15.7%	348	14.2%	553	22.1%
Dandenong Hospital	503	23.5%	572	25.0%	584	25.3%
Frankston Hospital	714	26.7%	511	18.7%	407	14.6%
Maroondah Hospital	316	23.2%	373	19.4%	278	13.7%
Monash Medical Centre	716	24.0%	660	23.5%	829	28.6%
Royal Melbourne Hospital	1,066	40.3%	698	22.2%	1,068	33.3%
St Vincent's Hospital ⁶	645	34.0%	73	4.0%	258	12.4%
Sunshine Hospital ⁷	1	0.13%	168	10.1%	171	8.6%
The Alfred	721	35.4%	553	26.6%	750	34.9%
The Northern Hospital	682	34.8%	298	14.9%	638	31.6%
Western Hospital	153	5.1%	209	10.4%	266	13.5%
Other metropolitan hospitals						
Royal Children's Hospital	1	0.0%	7	0.3%	17	0.6%
Major regional hospitals						
Ballarat Health Services	0	0.0%	12	0.8%	32	2.0%
Barwon Health	67	2.1%	149	3.9%	276	6.7%
Bendigo Health Care Group	0	0.0%	60	3.3%	124	6.4%
Goulburn Valley Health	0	0.0%	0	0.0%	0	0.0%
Latrobe Regional Hospital	8	0.7%	28	2.8%	91	8.4%
Total	6,803	17.8%	5,101	12.4%	6,887	15.7%

¹ The period of 'stay' is calculated from the time the patient arrives in the emergency department to the time when the patient leaves the emergency department.

² Patients treated in DHS sponsored Chest Pain Evaluation Area Pilots are excluded from these figures – up to 30 June 2001.

³ Data represent the number of emergency department patients admitted to ward who spend more than 12 hours in the emergency department prior to being admitted as a proportion of all emergency department patients admitted to ward.

⁴ June quarter 2002 data are provisional.

⁵ Major metropolitan hospitals include the campuses listed in the Introduction.

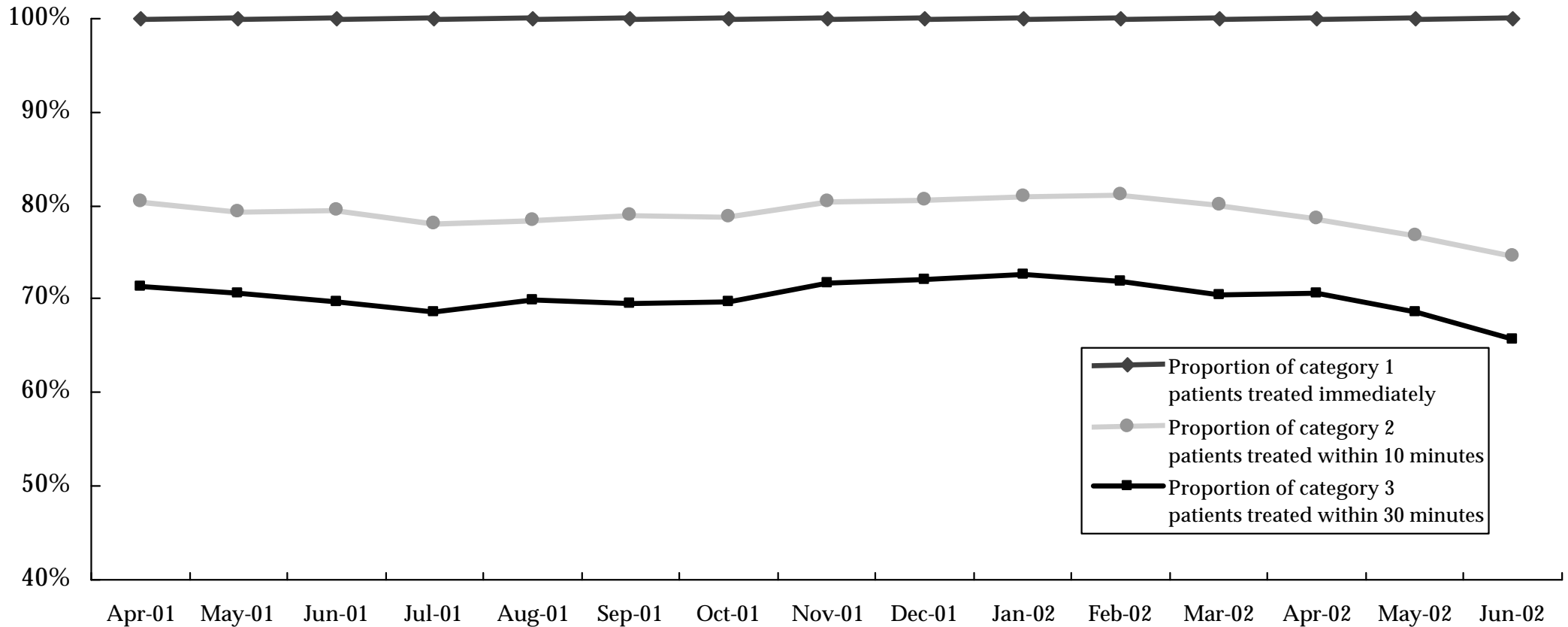
⁶ June quarter 2002 data are currently not available for St Vincent's Hospital. Estimates have been included for comparative purposes.

⁷ Changes in activity reflect the opening of a new adult emergency department at Sunshine Hospital on 2 July 2001.

Source: Pre-January 2002 - Hospital Access Program reports. Post-January 2002 - Victorian Emergency Minimum Dataset.

How many emergency department patients are treated within ideal time?

Figure 3.3 Emergency department achievement of ACEM waiting times by triage category^{1 2}



¹ Waiting times are calculated as the time between presentation at the emergency department and commencement of treatment. The following Australasian College for Emergency Medicine (ACEM) patient categories and recommended treatment times are used:

Category 1: Resuscitation case requiring immediate treatment, for example, major trauma, cardiac arrest, unconsciousness, shock.

Category 2: Emergency case requiring treatment within 10 minutes, for example, severe trauma, chest pain, severe pain, severe breathing difficulty.

Category 3: Urgent case requiring treatment within 30 minutes, for example, moderate trauma, infection, breathing difficulty.

² June quarter 2002 data are provisional.

Source: Pre-January 2002 – Hospital Access Program reports
Post-January 2002 – Victorian Emergency Minimum Dataset.

How many emergency department patients are treated within ideal time?

Table 3.4 Patients treated in selected public hospital emergency departments in triage category 1, 2 or 3 within ACEM recommended waiting times: June quarter 2002^{1 2}

Hospital	Triage Category 1		Triage Category 2		Triage Category 3	
	Total patients	Treated immediately	Total patients	Treated in 10 minutes	Total patients	Treated in 30 minutes
Major metropolitan hospitals³						
Angliss Hospital	21	100%	532	86%	2,179	82%
Austin and Repatriation Medical Centre	107	100%	731	79%	3,338	69%
Box Hill Hospital	88	100%	323	80%	3,331	53%
Dandenong Hospital	93	100%	911	90%	3,095	65%
Frankston Hospital	113	100%	2,231	77%	4,776	55%
Maroondah Hospital	63	100%	530	81%	2,361	73%
Monash Medical Centre	176	100%	1,516	72%	4,278	70%
Royal Melbourne Hospital	190	100%	1,328	80%	3,480	79%
St Vincent's Hospital ⁴	108	100%	708	78%	3,270	76%
Sunshine Hospital ⁵	58	100%	832	66%	4,046	63%
The Alfred	280	100%	1,140	57%	3,298	54%
The Northern Hospital	115	100%	766	73%	3,862	59%
Western Hospital	110	100%	762	88%	2,274	88%
Other metropolitan hospitals						
Royal Children's Hospital	36	100%	329	84%	3,461	76%
Major regional hospitals						
Ballarat Health Services	53	100%	331	85%	1,750	93%
Barwon Health	73	100%	763	70%	2,908	64%
Bendigo Health Care Group	27	100%	435	82%	2,037	71%
Goulburn Valley Health	23	100%	383	80%	1,920	76%
Latrobe Regional Hospital	39	100%	356	86%	1,534	74%
Total	1,773	100%	14,907	77%	57,198	68%

¹ Australasian College for Emergency Medicine (ACEM).

² June quarter 2002 data are provisional.

³ Major metropolitan hospitals include the campuses listed in the Introduction.

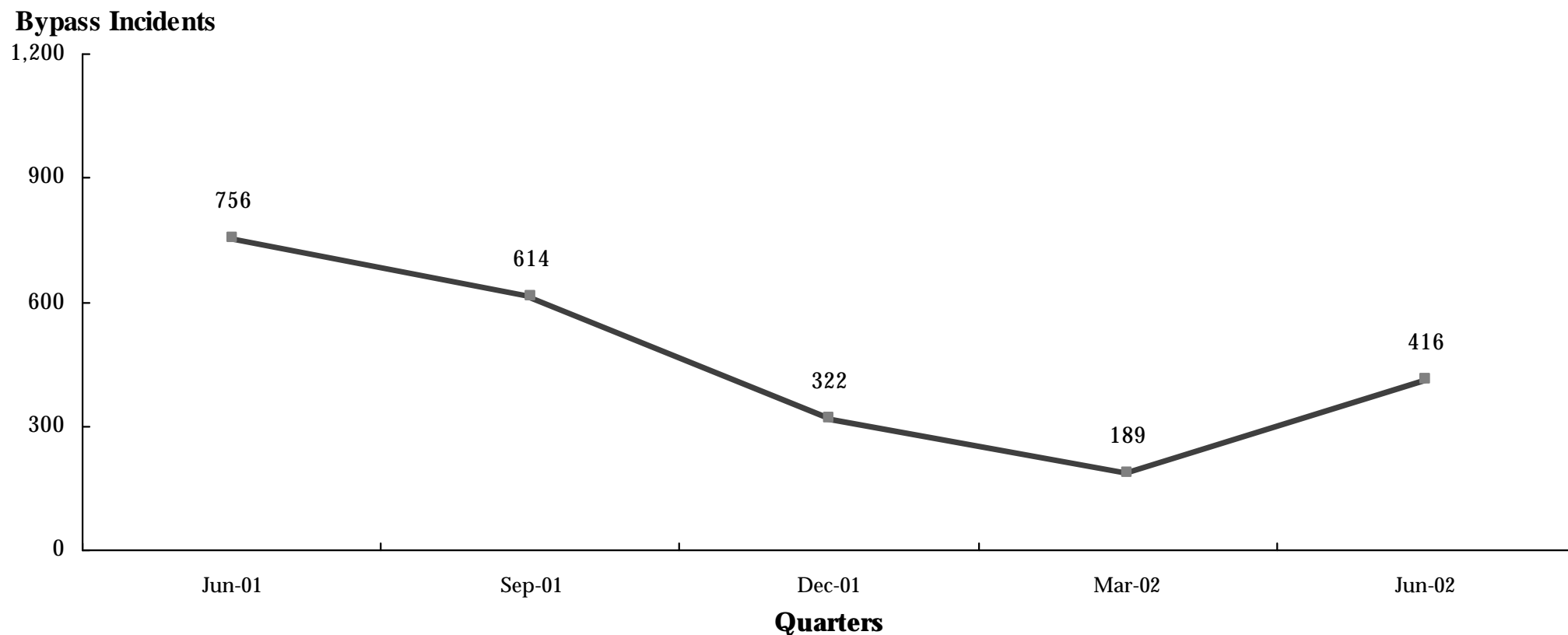
⁴ June quarter 2002 data are currently not available for St Vincent's Hospital. Estimates have been included for comparative purposes.

⁵ A new adult emergency department opened at Sunshine Hospital on 2 July 2001.

Source: Pre-January 2002 - Hospital Access Program reports. Post-January 2002 - Victorian Emergency Minimum Dataset.

How often do hospital emergency departments go on 'bypass'?

Figure 3.4 Periods of ambulance bypass of public hospitals ^{1 2}



¹ Hospital emergency departments can request to go on ambulance bypass when the emergency department has reached maximum capacity and the treatment of patients already in the emergency department could be significantly compromised with the arrival, by ambulance, of further patients. Each individual period of ambulance bypass is for two hours or less.

² Bypass policy allows for critically ill or injured patients to be taken to the nearest hospital emergency department regardless of bypass status.

Source: Metropolitan Ambulance Service.

How often do hospital emergency departments go on 'bypass'?

Table 3.5 Periods of ambulance bypass, by Individual Hospital ^{1 2}

Hospital	Jun-01 Qtr	Sep-01 Qtr	Dec-01 Qtr	Mar-02 Qtr	Jun-02 Qtr
Major metropolitan hospitals ³					
Angliss Hospital	21	9	6	5	3
Austin & Repatriation Medical Centre	51	48	18	1	23
Box Hill Hospital	45	42	18	9	17
Dandenong Hospital	49	25	41	11	27
Frankston Hospital	56	69	37	40	42
Maroondah Hospital	76	57	32	15	11
Monash Medical Centre	111	54	49	43	106
Royal Melbourne Hospital	173	137	26	5	60
St Vincent's Hospital	62	34	23	3	17
Sunshine Hospital ⁴	n.a.	0	6	4	28
The Alfred	30	74	50	24	15
The Northern Hospital	68	62	14	5	21
Western Hospital	14	3	2	24	46
Total	756	614	322	189	416

¹ Hospital emergency departments can request to go on ambulance bypass when the emergency department has reached maximum capacity and the treatment of patients already in the emergency department could be significantly compromised with the arrival, by ambulance, of further patients.

² Metropolitan Ambulance Service (MAS) response times are now being reported in MAS Response Report: A Quarterly Statistical Review of MAS, Melbourne. Copies of the Response Report can be obtained from MAS, Corporate Planning and Corporate Communications Unit, phone (03) 9840 3648.

³ Major metropolitan hospitals include the campuses listed in the Introduction.

⁴ As a result of the new adult emergency department opening at Sunshine Hospital on 2 July 2001, data commences from September quarter 2001 only.

Source: Metropolitan Ambulance Service and, due to ambulance industrial dispute in May and June 2001, the Metropolitan Health Services.

4. Access to Critical Care Services

How many hospital beds are available for patients who need intensive care?

Table 4.1 Average number of public hospital intensive care beds available and open at 9.00a.m., by Month^{1 2 3 4}

	Apr-01	May-01	Jun-01	Jul-01	Aug-01	Sep-01	Oct-01	Nov-01	Dec-01	Jan-02	Feb-02	Mar-02	Apr-02	May-02	Jun-02
Available ⁵	4.6	2.9	4.9	2.3	3.2	2.8	4.6	4.4	5.8	4.4	5.9	6.3	5.1	4.0	3.1
Total Open ⁶	105.8	107.8	105.6	105.3	102.8	104.4	98.6	99.5	97.2	96.7	95.0	96.3	95.0	97.9	97.9

¹ Based upon hospital census taken at 9.00a.m. daily.

² The data in this table represents an average for each month and varies from Table 4.3 which gives averages for the quarter.

³ Excludes high dependency beds

⁴ Changes to reporting in the December quarter 2001 account for the lower number of beds open. Previously, Northern, Maroondah and Western included some high dependency beds.

⁵ Available beds are unoccupied beds which are staffed, functional and available to receive new patients.

⁶ Total open beds are all functioning and staffed beds, regardless of whether they are occupied.

Source: Office of the Coordinator of Emergency and Critical Care Services.

How many hospital beds are available for patients who need coronary care?

Table 4.2 Average number of public hospital coronary care beds available and open at 9.00a.m., by Month¹

	Apr-01	May-01	Jun-01	Jul-01	Aug-01	Sep-01	Oct-01	Nov-01	Dec-01	Jan-02	Feb-02	Mar-02	Apr-02	May-02	Jun-02
Available	7.4	6.4	6.5	5.3	4.0	6.0	6.1	6.4	7.6	7.7	8.1	10.2	7.8	5.1	5.2
Total Open	73.3	72.3	72.9	71.8	72.6	73.2	73.8	74.0	73.6	71.7	73.0	74.6	72.9	74.4	72.5

¹ Notes under Table 4.1 apply.

Source: Office of the Coordinator of Emergency and Critical Care Services.

How many hospital beds are available for patients who need intensive care?

Table 4.3 Average number of public hospital intensive care beds available and open at 9.00a.m., by Hospital ^{1 2 3}

Hospital	June quarter 2002	
	Available ⁴	Total Open ⁵
Major metropolitan hospitals ⁶		
Austin and Repatriation Medical Centre	0.3	11.1
Box Hill Hospital	0.1	5.2
Dandenong Hospital	0.3	6.9
Frankston Hospital	0.3	6.4
Maroondah Hospital	0.5	2.9
Monash Medical Centre	1.2	11.4
Royal Melbourne Hospital	0.2	12.8
St Vincent's Hospital	0.1	9.3
Sunshine Hospital	0.3	2.2
The Alfred	0.2	21.1
The Northern Hospital	0.1	3.5
Western Hospital	0.6	4.2
Total ⁷	4.3	96.9

¹ Based upon hospital census taken at 9.00a.m. daily.

² Excludes high dependency beds.

³ Changes to reporting in the December quarter 2001 account for the lower number of beds open. Previously, Northern, Maroondah and Western included some high dependency beds.

⁴ Available beds are unoccupied beds which are staffed, functional and available to receive new patients.

⁵ Total open beds are all functioning and staffed beds, regardless of whether they are occupied.
Cardio thoracic beds at Royal Melbourne Hospital and The Alfred have been included in total open beds since November 2000.

⁶ Major metropolitan hospitals include the campuses listed in the Introduction.

⁷ The data in this table represents an average for the quarter and varies from tables 4.1 and 4.2 which are averages for each month.

Source: Office of the Coordinator of Emergency and Critical Care Services.

What percentage of patients are admitted within clinically ideal times?

Table 5.4 Percentage of people from elective surgery waiting lists who were admitted within the ideal time, by Urgency, by Individual Hospital ^{1 2}

Hospital	Urgent cases admitted within 30 days during the quarter				Semi-urgent cases admitted within 90 days during the quarter			
	March 2002		June 2002		March 2002		June 2002	
	Number	Percentage	Number	Percentage	Number	Percentage	Number	Percentage
Major metropolitan hospitals ³								
Angliss Hospital	81	100.00%	116	100.00%	288	99.65%	383	100.00%
Austin & Repatriation Medical Centre	519	100.00%	546	100.00%	525	62.20%	740	67.15%
Box Hill Hospital	313	100.00%	361	100.00%	540	83.08%	626	86.82%
Dandenong Hospital	304	100.00%	375	100.00%	178	57.05%	215	62.14%
Frankston Hospital	300	100.00%	372	100.00%	372	54.95%	418	57.98%
Maroondah Hospital	154	100.00%	208	100.00%	258	83.50%	283	92.18%
Monash Medical Centre	528	100.00%	605	100.00%	474	71.82%	509	71.19%
Royal Melbourne Hospital	608	100.00%	709	100.00%	431	65.70%	539	69.82%
St Vincent's Hospital ⁴	246	100.00%	311	100.00%	485	69.78%	720	70.27%
Sunshine Hospital	40	100.00%	59	100.00%	345	93.75%	399	94.77%
The Alfred	538	100.00%	635	100.00%	290	68.72%	332	58.76%
The Northern Hospital	203	100.00%	298	100.00%	456	67.86%	429	69.64%
Western Hospital	160	100.00%	205	100.00%	460	73.84%	498	77.81%
Other metropolitan hospitals								
Royal Children's Hospital ⁴	271	100.00%	384	100.00%	545	100.00%	556	100.00%
Royal Women's Hospital	162	100.00%	139	100.00%	397	99.75%	427	100.00%
Sandringham & District Memorial Hospital	91	100.00%	99	100.00%	332	92.74%	319	89.86%
The Royal Victorian Eye and Ear Hospital	105	100.00%	88	100.00%	844	81.31%	1,506	87.92%

¹ March quarter 2002 data have been amended from the previous reports.

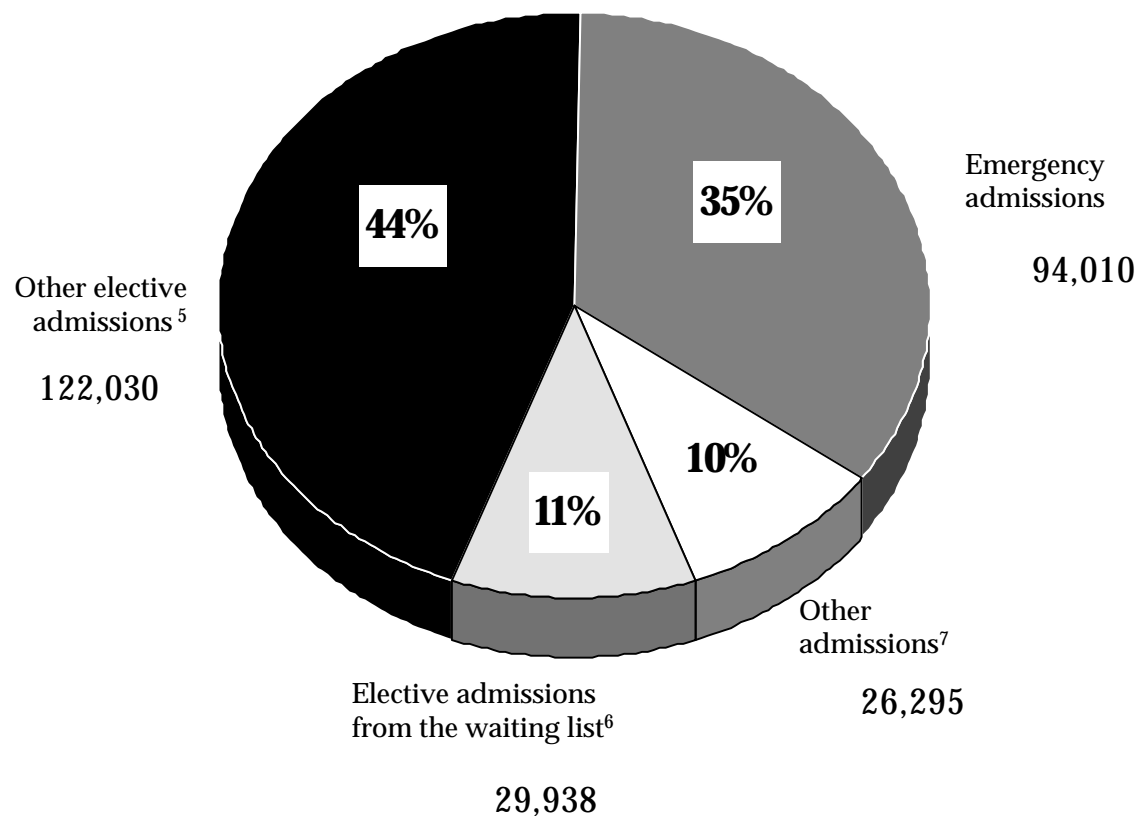
² June quarter 2002 data are provisional.

³ Major metropolitan hospitals include the campuses listed in the Introduction.

⁴ Aggregate waiting list figures provided by Royal Children's Hospital for March and June quarters 2002 and St Vincent's Hospital for June quarter 2002 are preliminary and may change.

What is the admission source of total hospital activity?

Figure 5.3 Separations by admission type: June quarter 2002 ^{1 2 3 4}



¹ Percentages may not add due to rounding.

² 2001/2002 data are provisional.

³ Data refer to the number of WIES-fundable separations (ie. the number of patients that have been discharged from hospital).

⁴ Excludes patients admitted from the elective surgery waiting list.

⁵ Data are currently not available for Royal Children's Hospital and St Vincent's Hospital. The aggregate data and estimates have been used for comparative purposes

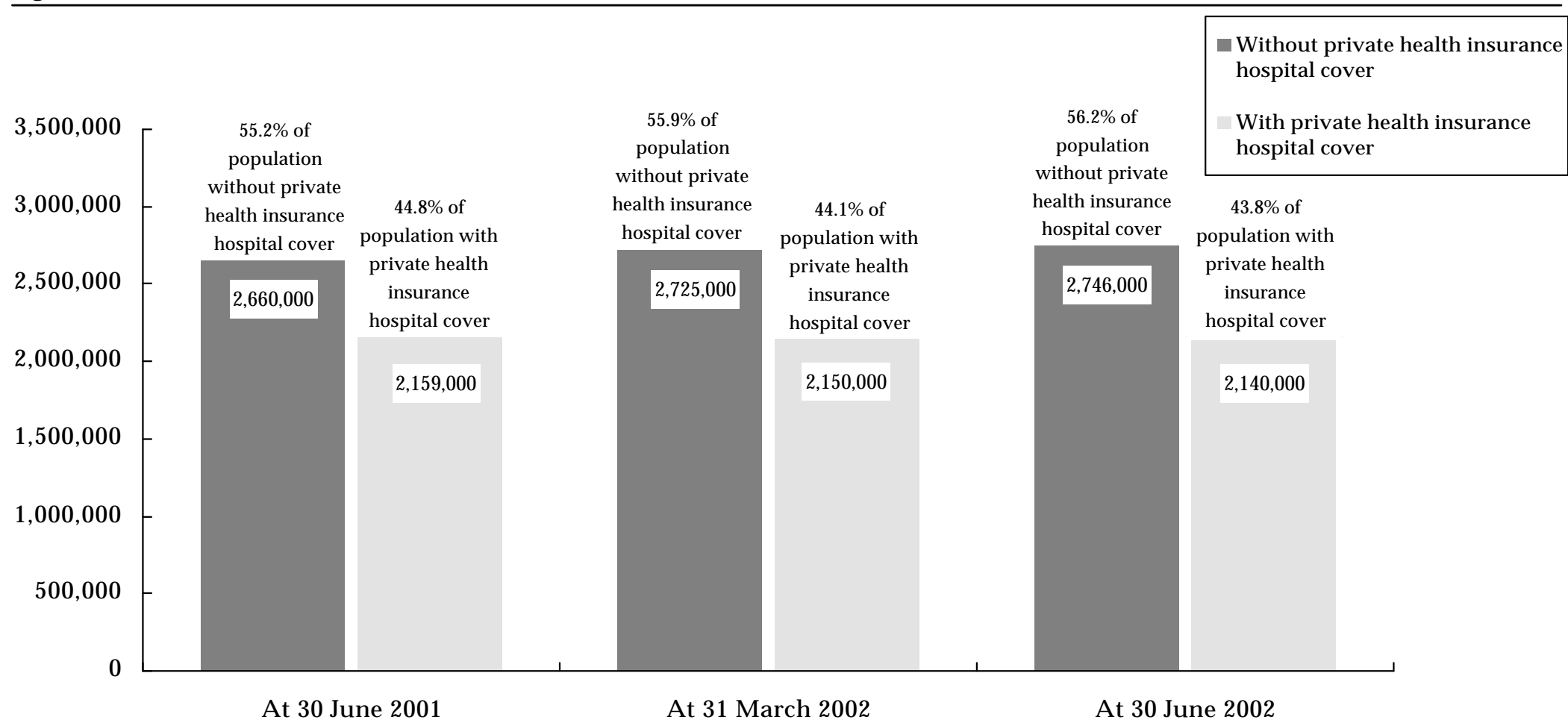
⁶ Patients admitted from the elective surgery waiting list during the quarter (ESIS).

⁷ Includes maternity, newborn and statistical (change in patient care type) admissions.

6. Private Health Insurance

How many Victorians have private health insurance hospital cover?

Figure 6.1 Health insurance status of Victorians^{1 2 3}



¹ Data are for all people covered by insurance, that is, contributors, partners and dependants.

² Data for current and previous quarters are provisional.

³ Statistics reflect total persons covered by any level of hospital private health insurance.

Source: Private Health Insurance Administration Council (20 August 2002).

7. Glossary

What do the terms used in this report mean?

Admitted Patient

Someone who is an inpatient in a hospital. Sameday patients who are admitted for less than 24 hours are also counted as inpatients but people who attend hospital for outpatient clinics are not.

Cancellation

The request for elective surgery has been withdrawn and the patient is removed from this hospital's Waiting List without admission for the awaited procedure. This can occur for clinical reasons, transfer of the patient to another hospital, or at the request of the patient.

Casemix Funded

A system of funding hospitals according to the actual number and type of services that they provide. Casemix funding was introduced for most Victorian public hospitals in July 1993.

Coronary Care

A hospital unit with specialised staff and equipment to care for patients with heart disease.

Elective Admission

A planned admission to hospital. Emergency admissions and transfers from other hospitals are not counted as elective admissions.

Elective Surgery

Planned surgery that is not an emergency requiring hospital admission within 24 hours.

Emergency Admission

An unplanned admission to hospital due to unexpected illness or injury that requires urgent care.

Emergency Department

A hospital department that specialises in providing emergency care for people who are in need of urgent care (ambulance cases for example) and people who choose to seek treatment in an emergency department.

Intensive Care

A hospital unit with specialised staff and equipment to provide continuous care for critically ill, injured or post-operative patients.

Non Sameday Patient

In the context of this report, a non sameday patient is an inpatient who leaves hospital on a later date than when they were admitted.

Separation

When an inpatient leaves a hospital. This is the technical way of counting the number of inpatients treated by a hospital.

Step Down Bed

Hospital beds with specialised staff and equipment to care for patients who no longer need coronary or intensive care but are not yet ready to move to a general hospital ward.

Transfer

When an inpatient is moved from one hospital to another. This might be in order to obtain a specialised treatment not available at the first hospital or because of the patient's preferences.

Waiting List Hospital

A major public hospital that performs elective surgery for public patients and uses a waiting list to properly keep track of people who require elective surgery.