

Hospital Services Report

June Quarter 2001

Notes

This document contains the most up-to-date information available at the time of preparation.

This *Hospital Services Report* is available on the Department of Human Services Internet site located at:

<http://www.dhs.vic.gov.au/ahs/pub.htm>

Design and production by Department of Human Services, Melbourne, Victoria.

June 2001

© Copyright Department of Human Services 2001.

This publication is copyright. No part may be reproduced by any process except in accordance with the provisions of the *Copyright Act 1968*.

Contents

<i>Introduction</i>	1
1. Patients waiting for residential aged care placement	2
2. Hospital admitted patient activity	4
3. Access to emergency services	6
4. Access to critical care services	17
5. Access to elective surgery	19
6. Private health insurance	30
7. Accredited Victorian public hospitals	31
8. Glossary	35

Introduction

Consumers, health care providers and government all need information on the quality of health services. Public access to information assists consumers to understand the health care system, it assists providers of health services in planning and increases the accountability of the Department of Human Services to the people in the state of Victoria, Australia.

The *Hospital Services Report* was introduced in 1995. This edition includes data for the June quarter 2001, which covers the months of April, May and June.

The information included in this report is often requested from the Department. Since technical information of this nature is very difficult to interpret, each graph and table needs to be carefully considered in the context of the complexity of the health care system. Department staff, hospital staff, general practitioners and other health care professionals may be able to assist you to interpret this report.

A number of graphs and tables refer to major metropolitan hospitals.

The major metropolitan hospitals include:

Angliss Health Service

Austin & Repatriation Medical Centre

- Austin campus

- Repatriation campus

Box Hill Hospital

Dandenong Hospital

Frankston Hospital

Maroondah Hospital

Monash Medical Centre

- Clayton campus

- Moorabbin campus

Royal Melbourne Hospital

St Vincent's Hospital

Sunshine Hospital

The Alfred

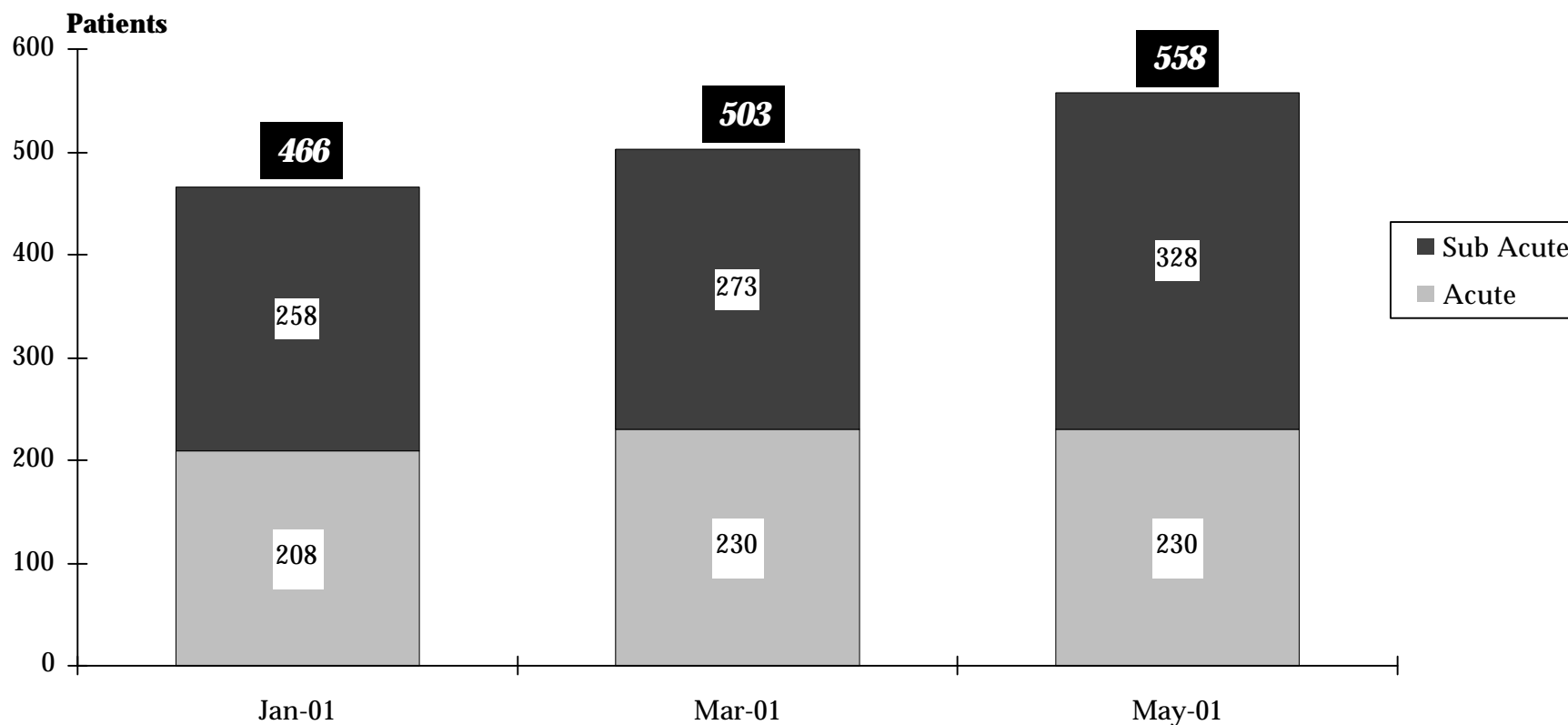
The Northern Hospital

Western Hospital

1. Patients waiting for residential aged care placement

How many patients are waiting for residential aged care placements?

Figure 1.1 Number of acute and sub acute patients waiting for residential aged care placement ^{1 2 3}



¹ Hospitals reporting sub acute are Angliss, Anne Caudle, Bundoora Extended Care, Bethlehem, Broadmeadows, Caritas Christi, Caulfield General, Dandenong, Goulburn Valley, Grace McKellar, Hampton, Kingston, Latrobe Regional, Maroondah, Mt Eliza, Melbourne Extended Care Rehabilitation Service, Peter James, Royal Talbot, St George's, Sunshine and Williamstown.

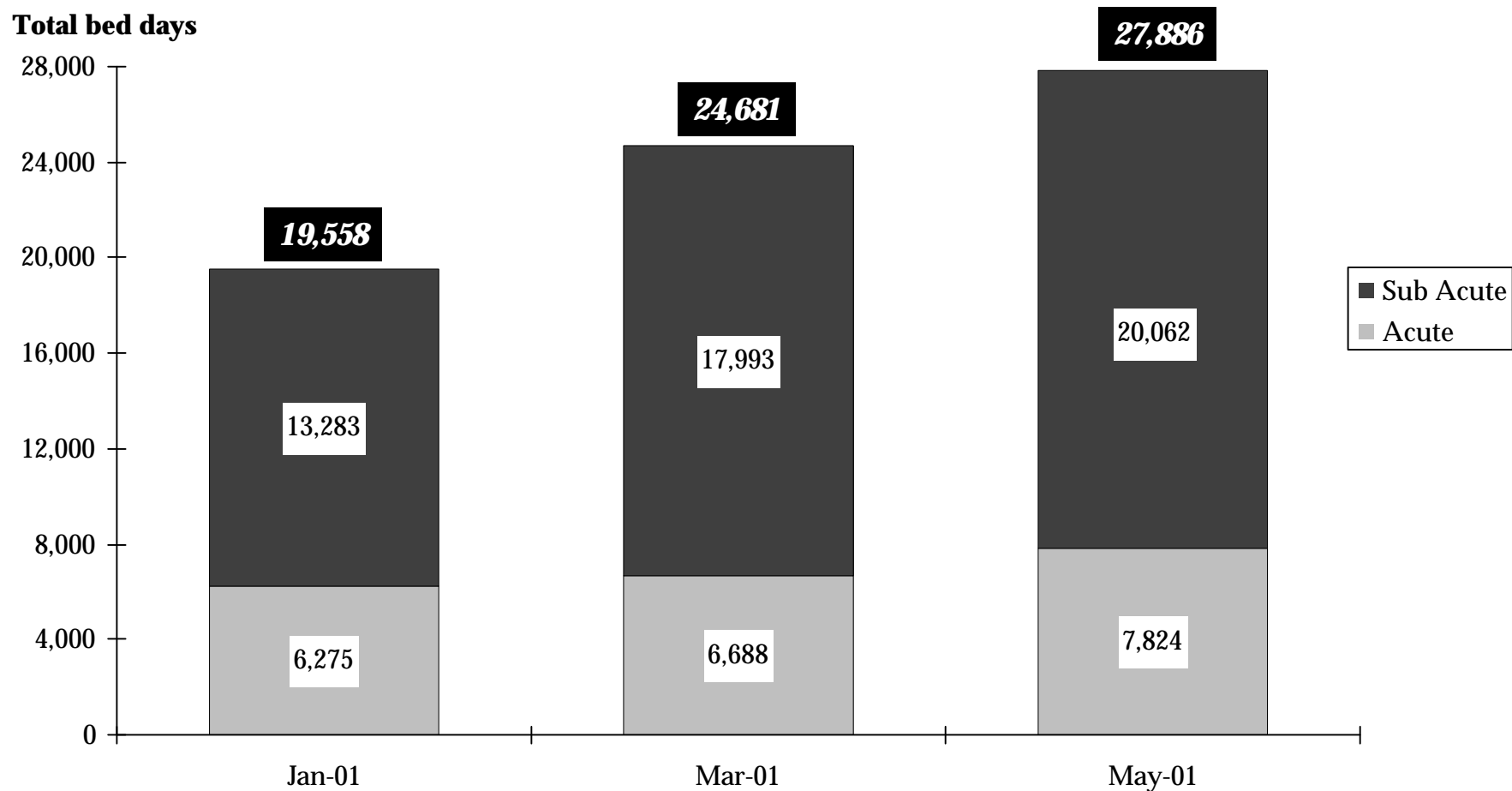
² Hospitals reporting acute are The Alfred, Angliss, Austin & Repatriation, Ballarat, Barwon Health, Bendigo, Box Hill, Dandenong, Frankston, Goulburn Valley, Latrobe Regional, Maroondah, Monash Medical Centre (Clayton & Moorabbin), The Northern, Rosebud, Royal Melbourne, Sandringham, St Vincent's, Sunshine, Western and Williamstown.

³ Previous quarter's data have been updated to include all patients in hospitals surveyed who are awaiting residential aged care placement.

Source: Bi-monthly Bed Census.

How many bed days are spent waiting for residential aged care placements?

Figure 1.2 Number of bed days patients wait for residential aged care placement ^{1 2}



¹ Notes for Figure 1.1 apply.

² Previous quarter's data have been updated to include all patients in hospitals surveyed who are awaiting residential aged care placement.

Source: Bi-monthly Bed Census.

2. Hospital Admitted Patient Activity

How many patients are admitted to hospital?

Table 2.1 Admitted patients by individual hospital^{1 2 3 4}

Hospital	June quarter 2000	March quarter 2001	June quarter 2001	% Change June 2000 to June 2001
Major metropolitan hospitals ⁴				
Angliss Health Service	5,712	5,371	5,733	0.4%
Austin & Repatriation Medical Centre	15,358	14,908	16,008	4.2%
Box Hill Hospital	9,451	8,460	8,958	-5.2%
Dandenong Hospital	7,131	6,779	7,112	-0.3%
Frankston Hospital	9,221	9,726	9,964	8.1%
Maroondah Hospital	4,150	4,002	4,393	5.9%
Monash Medical Centre	18,619	18,046	19,745	6.0%
Royal Melbourne Hospital ⁵	15,080	16,674	17,978	19.2%
St Vincent's Hospital	9,904	10,471	10,870	9.8%
Sunshine Hospital ⁵	5,698	4,243	4,263	-25.2%
The Alfred	11,391	12,108	13,353	17.2%
The Northern Hospital	6,368	6,189	6,456	1.4%
Western Hospital	8,510	8,436	8,747	2.8%
Other metropolitan hospitals				
Caulfield General Medical Centre	379	420	462	21.9%
Mercy Public Hospital, East Melbourne	4,829	4,739	4,599	-4.8%
Peter MacCallum Cancer Institute	3,086	3,225	3,587	16.2%
Royal Children's Hospital	7,105	6,434	7,189	1.2%
Royal Women's Hospital	7,022	6,714	6,765	-3.7%
Sandringham & District Memorial Hospital	2,897	3,434	3,592	24.0%
The Royal Victorian Eye and Ear Hospital	3,094	2,647	3,199	3.4%
Other metropolitan hospitals	10,200	10,520	11,332	11.1%

¹ Data refer to the number of 'separations' (ie. the number of patients that have been discharged from hospital).

² 2000/2001 data are provisional.

³ Data for March quarter 2001 have been amended to include all WIES-fundable separations.

⁴ Major metropolitan hospitals contain the campuses listed in the Introduction.

⁵ Change in activity is as a result of reporting arrangements for renal dialysis.

Table 2.1 Admitted patients by individual hospital (continued)

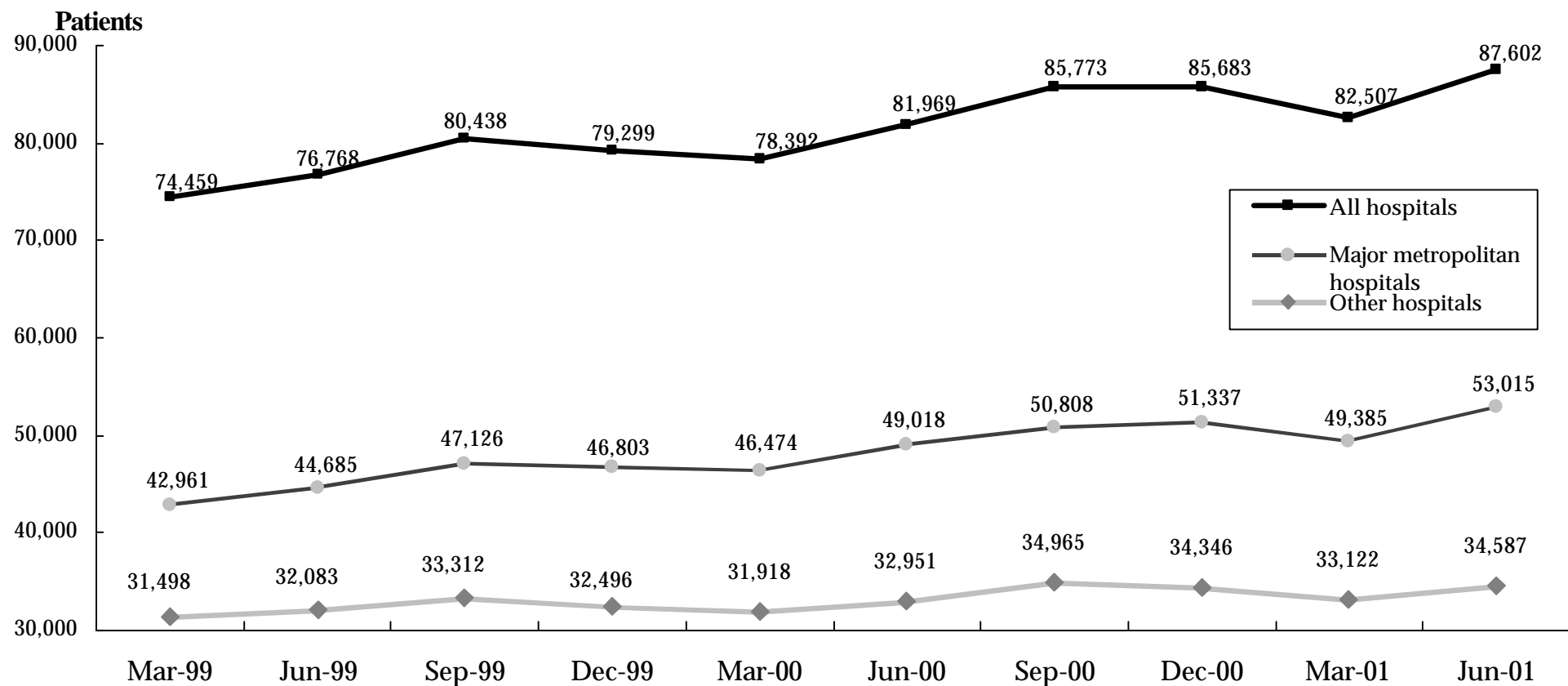
Hospital	June quarter 2000	March quarter 2001	June quarter 2001	% Change June 2000 to June 2001
Major regional hospitals				
Ballarat Health Services	5,801	5,713	5,962	2.8%
Barwon Health	10,680	11,204	12,000	12.4%
Bendigo Health Care Group	5,414	5,052	5,307	-2.0%
Goulburn Valley Health	4,616	4,282	4,368	-5.4%
Latrobe Regional Hospital	4,967	5,139	5,417	9.1%
Other rural hospitals				
Central Gippsland Health Service	2,550	2,336	2,379	-6.7%
South West Healthcare	3,253	3,435	3,369	3.6%
Wangaratta District Base Hospital	2,581	2,732	3,229	25.1%
Wimmera Health Care Group	2,208	2,209	2,226	0.8%
West Gippsland Hospital	3,822	3,495	3,535	-7.5%
Other rural hospitals	35,151	33,825	35,503	1.0%
Total all public hospitals	246,248	242,968	257,600	4.6%

Source: Victorian Admitted Episode Dataset (21 August 2001 update).

3. Access to Emergency Services

How many emergency patients are admitted to hospital?

Figure 3.1 Patients admitted to public hospitals requiring emergency care^{1 2}



¹ Major metropolitan hospitals contain the campuses listed in the Introduction.

² June quarter 2001 data are provisional.

How many emergency patients are admitted to hospital?

Table 3.1 Emergency admissions^{1 2}

Hospital	June quarter 2000	March quarter 2001	June quarter 2001	% Change March 2001 to June 2001	% Change June 2000 to June 2001
Major metropolitan hospitals ³					
Angliss Health Services	2,044	2,037	2,211	8.5%	8.2%
Austin and Repatriation Medical Centre	3,715	3,684	3,928	6.6%	5.7%
Box Hill Hospital	4,036	3,688	3,976	7.8%	-1.5%
Dandenong Hospital	4,708	4,316	4,436	2.8%	-5.8%
Frankston Hospital	4,627	5,126	5,298	3.4%	14.5%
Maroondah Hospital	2,141	2,274	2,563	12.7%	19.7%
Monash Medical Centre	6,507	5,999	6,690	11.5%	2.8%
Royal Melbourne Hospital	5,206	5,459	5,751	5.3%	10.5%
St Vincent's Hospital	3,175	3,362	3,519	4.7%	10.8%
Sunshine Hospital	970	1,013	1,119	10.5%	15.4%
The Alfred	4,221	4,345	5,331	22.7%	26.3%
The Northern Hospital	2,884	3,089	3,310	7.2%	14.8%
Western Hospital	4,784	4,993	4,883	-2.2%	2.1%
Major hospitals total	49,018	49,385	53,015	7.4%	8.2%
Other hospitals total	32,951	33,122	34,587	4.4%	5.0%
Grand total	81,969	82,507	87,602	6.2%	6.9%

¹ Data exclude elective, maternity, newborn and statistical admissions.

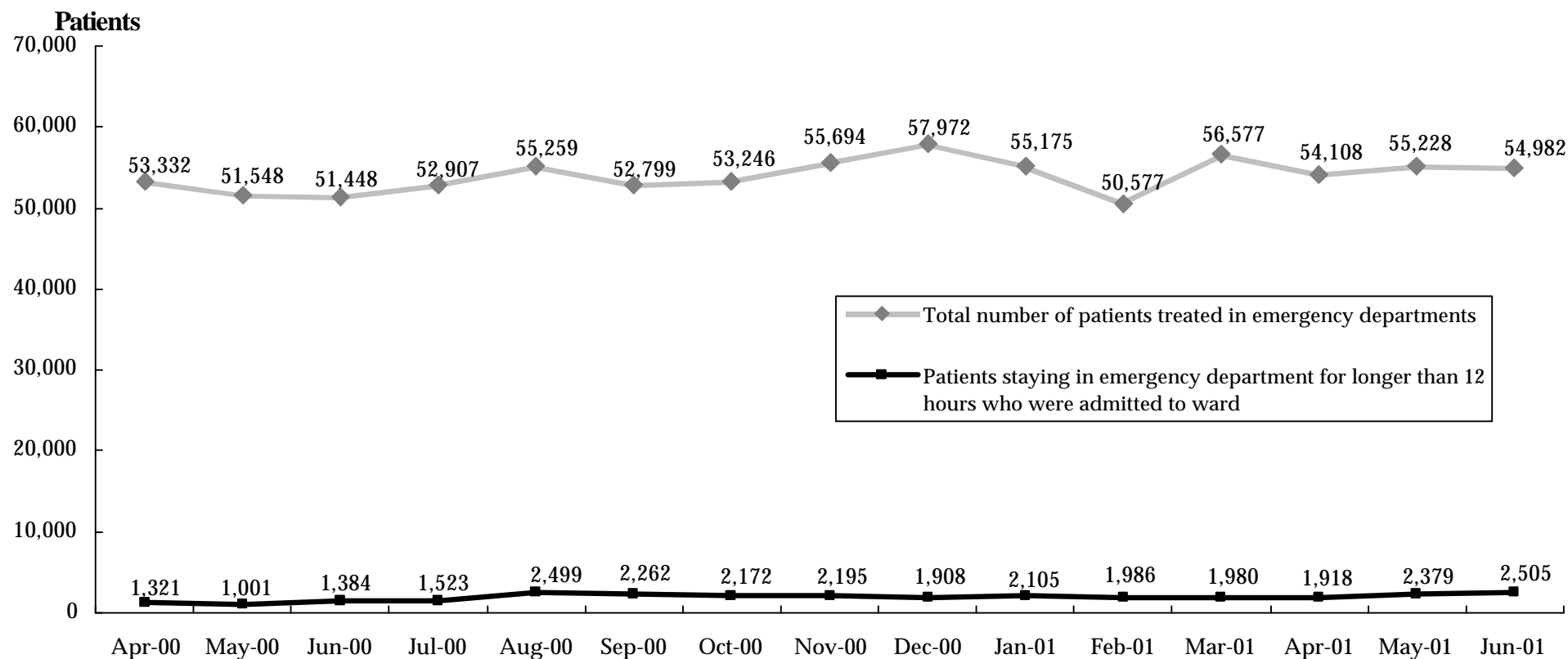
² Data refer to the number of 'separations' (ie. the number of patients that have been discharged from hospital).

³ Major metropolitan hospitals contain the campuses listed in the Introduction.

Source: Victorian Admitted Episode Dataset (21 August 2001 update).

How many patients stay for an extended period in the emergency department?

Figure 3.2 Patients staying in emergency departments for over 12 hours while waiting for a hospital bed ^{1 2 3 4 5}



¹ The period of 'stay' is calculated from the time the patient arrives in the emergency department to the time when the patient leaves the emergency department.

² Data only for hospitals participating in the Emergency Services Enhancement Program / Hospital Access Program.

³ Patients treated in DHS sponsored Chest Pain Evaluation Area Pilots are excluded from these figures.

⁴ Data for June, July and August 2000 and February 2001 have been amended from previous reports.

⁵ June quarter 2001 data are provisional.

Source: Victorian Emergency Minimum Dataset.

How many patients are treated in emergency departments?

Table 3.2: Patients treated in selected public hospital emergency departments^{1 2}

	June quarter 2000	March quarter 2001	June quarter 2001	% Change June 2000 to June 2001
Patients Treated	156,328	162,329	164,318	5.1%

¹ Data only for hospitals participating in the Emergency Services Enhancement Program / Hospital Access Program. A complete list of these hospitals is given in Table 3.3.

² June quarter 2001 data are provisional.

Source: Victorian Emergency Minimum dataset.

How many patients are treated in each hospital emergency department?

Table 3.3 Patients treated in hospital emergency departments, by Individual Hospitals 1 2 3

Hospital	June quarter 2000	March quarter 2001	June quarter 2001	% Change June 2000 to June 2001
Major metropolitan hospitals ⁴				
Angliss Health Services	7,183	8,024	8,263	15.0%
Austin and Repatriation Medical Centre	8,388	8,834	8,801	4.9%
Box Hill Hospital	8,448	8,733	8,670	2.6%
Dandenong Hospital	9,151	9,525	9,721	6.2%
Frankston Hospital	8,686	9,479	9,617	10.7%
Maroondah Hospital	7,174	7,259	7,414	3.3%
Monash Medical Centre	11,848	11,582	12,385	4.5%
Royal Melbourne Hospital	10,752	11,151	11,038	2.7%
St Vincent's Hospital	7,184	7,708	7,418	3.3%
The Alfred	9,034	9,473	9,066	0.4%
The Northern Hospital	9,893	10,461	10,738	8.5%
Western Hospital	8,954	10,153	10,210	14.0%
Other metropolitan hospitals				
Royal Children's Hospital	12,876	11,752	13,868	7.7%
Major regional hospitals				
Ballarat Health Services	6,951	7,777	7,584	9.1%
Barwon Health	9,068	9,518	8,279	-8.7%
Bendigo Health Care Group	8,226	7,664	7,936	-3.5%
Goulburn Valley Health	5,945	6,761	6,603	11.1%
Latrobe Regional Hospital	6,567	6,475	6,707	2.1%
Total	156,328	162,329	164,318	5.1%

¹ Data only for hospitals participating in the Emergency Services Enhancement Program / Hospital Access Program.

² Data include all emergency department patients, that is, they include patients who are subsequently admitted to hospital and patients who are treated in the emergency department without being admitted to hospital.

³ June quarter 2001 data are provisional.

⁴ Major metropolitan hospitals contain the campuses listed in the Introduction.

Source: Victorian Emergency Minimum Dataset.

Table 3.4 Patients staying in selected public hospital emergency departments for over 12 hours while waiting for a hospital bed^{1 2 3 4 5}

Hospital	June quarter 2000		March quarter 2001		June quarter 2001	
	Numbers	Percentage	Numbers	Percentage	Numbers	Percentage
Major metropolitan hospitals ⁶						
Angliss Health Services	40	3.3%	162	12.3%	184	13.8%
Austin and Repatriation Medical Centre	190	7.0%	773	33.6%	660	26.7%
Box Hill Hospital	247	10.6%	316	15.0%	366	15.7%
Dandenong Hospital	272	11.5%	517	25.2%	503	23.5%
Frankston Hospital	462	18.4%	555	22.1%	714	26.7%
Maroondah Hospital	15	1.1%	235	19.8%	316	23.2%
Monash Medical Centre	744	26.2%	706	26.3%	716	24.0%
Royal Melbourne Hospital	329	10.8%	976	39.3%	1,066	40.3%
St Vincent's Hospital	524	31.1%	424	24.4%	645	34.0%
The Alfred	419	18.8%	608	30.0%	721	35.4%
The Northern Hospital	183	9.1%	609	33.2%	682	34.8%
Western Hospital	221	7.9%	155	5.4%	153	5.1%
Other metropolitan hospitals						
Royal Children's Hospital	0	-	6	0.3%	1	0.0%
Major regional hospitals						
Ballarat Health Services	0	-	0	-	0	-
Barwon Health	58	1.9%	26	0.8%	67	2.1%
Bendigo Health Care Group	0	-	0	-	0	-
Goulburn Valley Health	0	-	0	-	0	-
Latrobe Regional Hospital	2	0.2%	3	0.3%	8	0.7%
Total	3,706	9.7%	6,071	16.9%	6,802	17.8%

¹ The period of 'stay' is calculated from the time the patient arrives in the emergency department to the time when the patient leaves the emergency department.

² Data only for hospitals participating in the Emergency Services Enhancement Program / Hospital Access Program.

³ Patients treated in DHS sponsored Chest Pain Evaluation Area Pilots are excluded from these figures.

⁴ Percentage data represent the number of emergency department patients admitted to ward who spend more than 12 hours in the emergency department prior to being admitted as a proportion of all emergency department patients admitted to ward.

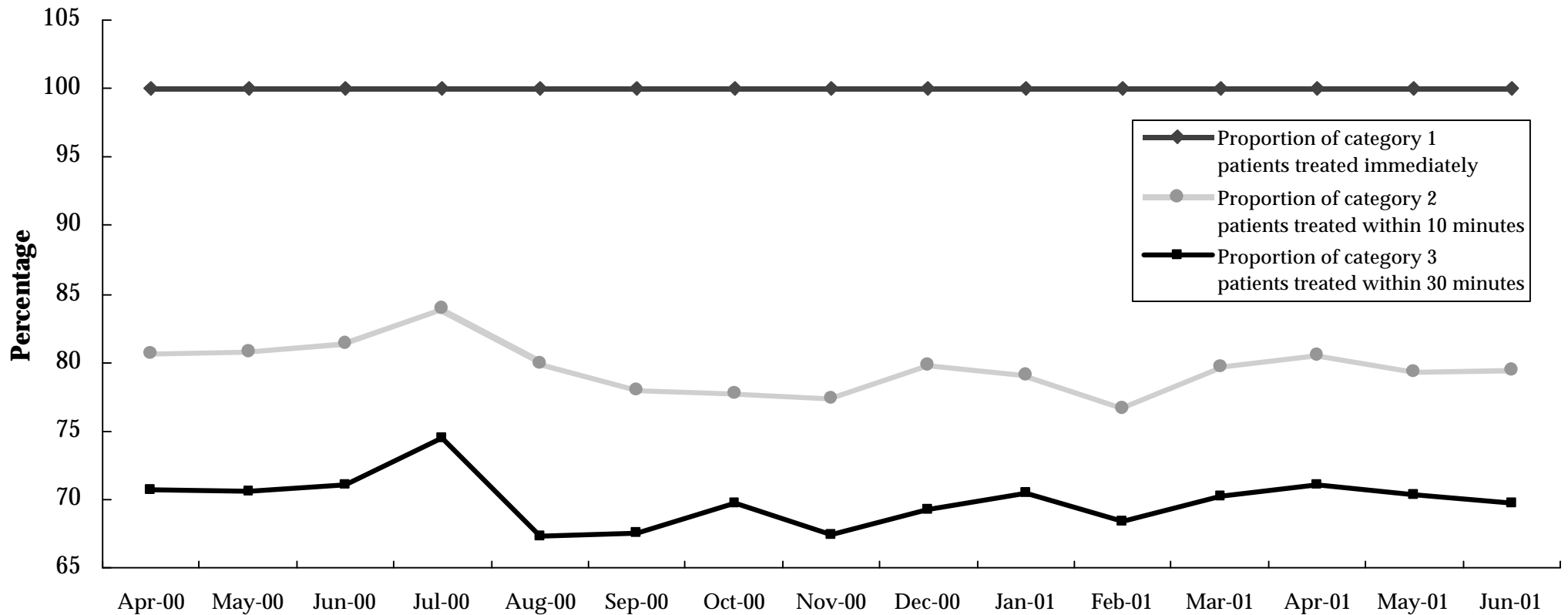
⁵ June quarter 2001 data are provisional.

⁶ Major metropolitan hospitals contain the campuses listed in the Introduction.

Source: Victorian Emergency Minimum Dataset.

How many emergency department patients are treated within ideal time?

Figure 3.3 Emergency department achievement of ACEM waiting times by triage category^{1 2 3}



¹ Waiting times are calculated as the time between presentation at the emergency department and commencement of treatment. The following Australasian College for Emergency Medicine (ACEM) patient categories and recommended treatment times are used:

Category 1: Resuscitation case requiring immediate treatment, for example, major trauma, cardiac arrest, unconsciousness, shock.

Category 2: Emergency case requiring treatment within 10 minutes, for example, severe trauma, chest pain, severe pain, severe breathing difficulty.

Category 3: Urgent case requiring treatment within 30 minutes, for example, moderate trauma, infection, breathing difficulty.

² Data only for hospitals participating in the Emergency Services Enhancement Program / Hospital Access Program.

³ June quarter 2001 data are provisional.

How many emergency department patients are treated within ideal time?

Table 3.5 Patients treated in selected public hospital emergency departments in triage category 1, 2 or 3 within ACEM recommended waiting times: June quarter 2001^{1 2 3}

Hospital	Triage Category 1		Triage Category 2		Triage Category 3	
	Total patients	Treated immediately	Total patients	Treated in 10 minutes	Total patients	Treated in 30 minutes
Major metropolitan hospitals⁴						
Angliss Health Services	32	100%	640	85%	2,167	80%
Austin and Repatriation Medical Centre	119	100%	674	82%	2,924	68%
Box Hill Hospital	84	100%	461	82%	3,475	58%
Dandenong Hospital	119	100%	839	71%	2,996	59%
Frankston Hospital	95	100%	1,540	72%	4,211	64%
Maroondah Hospital	70	100%	559	84%	2,250	60%
Monash Medical Centre	240	100%	1,707	84%	4,161	74%
Royal Melbourne Hospital	216	100%	1,247	74%	3,310	75%
St Vincent's Hospital	117	100%	676	80%	2,888	66%
The Alfred	205	100%	1,053	80%	2,883	76%
The Northern Hospital	96	100%	611	79%	3,265	66%
Western Hospital	142	100%	983	83%	3,381	78%
Other metropolitan hospitals						
Royal Children's Hospital	20	100%	249	85%	3,259	76%

¹ Data only for hospitals participating in the Hospital Access Program / Emergency Services Enhancement Program.

² Australasian College for Emergency Medicine (ACEM).

³ June quarter 2001 data are provisional.

⁴ Major metropolitan hospitals contain the campuses listed in the Introduction.

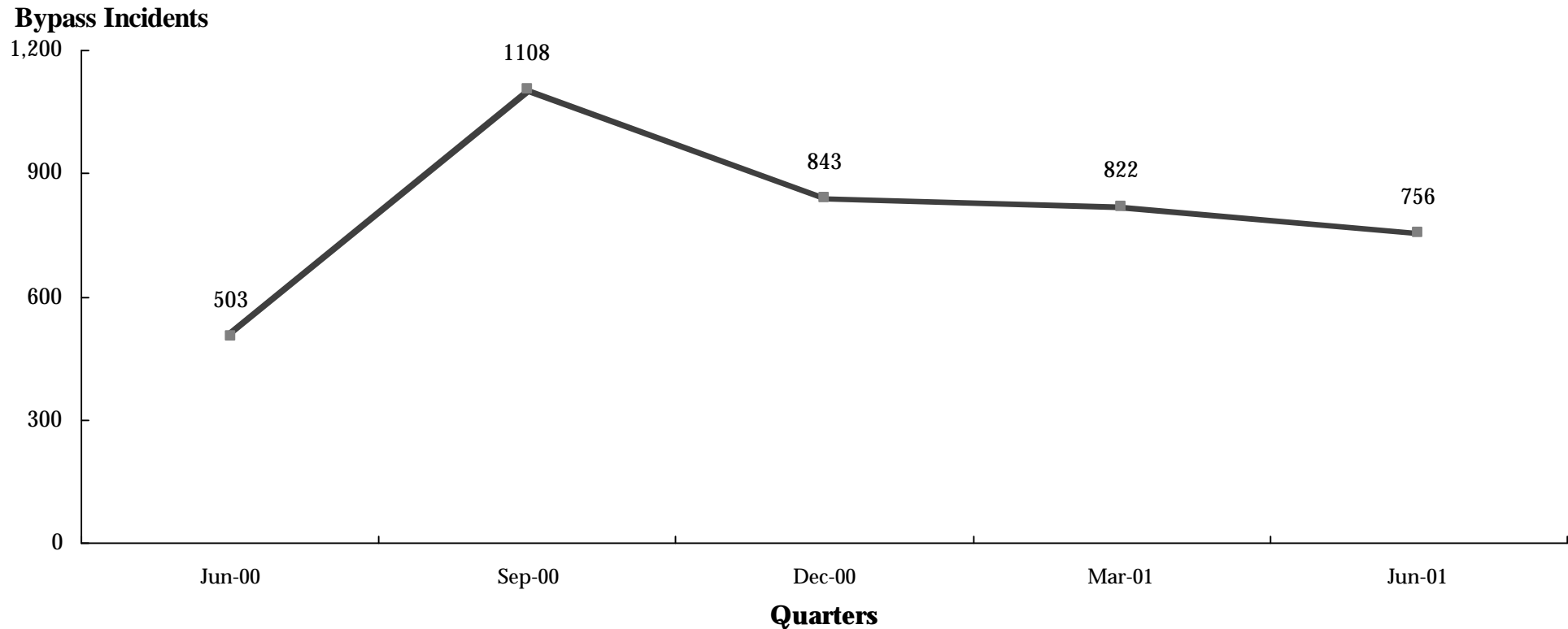
Table 3.5 Patients treated in selected public hospital emergency departments in triage category 1, 2 or 3 within ACEM recommended waiting times: June quarter 2001 (continued)

Hospital	Triage Category 1		Triage Category 2		Triage Category 3	
	Total patients	Treated immediately	Total patients	Treated in 10 minutes	Total patients	Treated in 30 minutes
Major regional hospitals						
Ballarat Health Services	64	100%	245	88%	1,484	93%
Barwon Health	75	100%	835	79%	2,524	66%
Bendigo Health Care Group	28	100%	580	83%	2,201	76%
Goulburn Valley Health	17	100%	361	79%	1,890	77%
New Latrobe Regional Hospital	41	100%	355	93%	1,393	79%
Total	1,780	100%	13,615	80%	50,662	70%

Source: Victorian Emergency Minimum Dataset.

How often do hospital emergency departments go on 'bypass'?

Figure 3.4 Periods of ambulance bypass of public hospitals ^{1 2 3}



¹ Hospital emergency departments can request to go on ambulance bypass when the emergency department has reached maximum capacity and the treatment of patients already in the emergency department could be significantly compromised with the arrival, by ambulance, of further patients. Each individual period of ambulance bypass is for two hours or less.

² Bypass policy allows for critically ill or injured patients to be taken to the nearest hospital emergency department regardless of bypass status.

³ Data are for hospitals participating in the Emergency Services Enhancement Program / Hospital Access Program.

Source: Metropolitan Ambulance Service.

How often do hospital emergency departments go on 'bypass'?

Table 3.6 Periods of ambulance bypass, by Individual Hospital^{1 2 3}

Hospital	Apr-00	May-00	Jun-00	Total Jun-00 Qtr	Jul-00	Aug-00	Sep-00	Total Sep-00 Qtr	Oct-00	Nov-00	Dec-00	Total Dec-00 Qtr	Jan-01	Feb-01	Mar-01	Total Mar-01 Qtr	Apr-01	May-01	Jun-01	Total Jun-01 Qtr
Major metropolitan hospitals⁴																				
Angliss Health Services	-	-	4	4	6	12	5	23	8	12	1	21	2	2	2	6	2	5	14	21
Austin & Repatriation Medical Centre	7	6	10	23	4	45	30	79	13	19	12	44	23	29	8	60	16	11	24	51
Box Hill Hospital	5	17	9	31	2	27	15	44	21	9	17	47	17	11	11	39	17	16	12	45
Dandenong Hospital	15	10	14	39	7	24	50	81	27	14	19	60	11	36	19	66	16	15	18	49
Frankston Hospital	37	37	51	125	24	77	68	169	50	40	20	110	18	28	39	85	17	31	8	56
Maroondah Hospital	7	10	7	24	9	40	44	93	13	23	42	78	17	18	23	58	22	21	33	76
Monash Medical Centre	75	38	46	159	10	42	59	111	53	43	15	111	47	64	12	123	27	36	48	111
Northern Hospital	2	1	1	4	9	75	60	144	24	13	8	45	42	34	32	108	32	6	30	68
Royal Melbourne Hospital	2	1	11	14	46	94	42	182	69	46	47	162	46	36	51	133	45	56	72	173
St Vincent's Hospital	14	5	3	22	12	31	21	64	7	15	16	38	15	11	13	39	28	20	14	62
The Alfred	17	8	9	34	15	39	23	77	38	46	29	113	16	42	16	74	13	12	5	30
Western Hospital	13	4	7	24	20	18	3	41	2	6	6	14	11	10	10	31	-	11	3	14
Total⁵	194	137	172	503	164	524	420	1,108	325	286	232	843	265	321	236	822	235	240	281	756

¹ Hospital emergency departments are bypassed by ambulances when the emergency department has reached maximum capacity and the treatment of patients already in the emergency department could be significantly compromised by the ambulance arrival of an additional patient requiring emergency treatment. Each individual period of ambulance bypass is for two hours or less.

² Data only for hospitals participating in the Emergency Services Enhancement Program / Hospital Access Program.

³ Metropolitan Ambulance Service (MAS) response times are now being reported in MAS Response Report: A Quarterly Statistical Review of MAS, Melbourne. Copies of the Response Report can be obtained from MAS, Corporate Planning and Corporate Communications Unit, phone (03) 9840 3648.

⁴ Major metropolitan hospitals contain the campuses listed in the Introduction.

⁵ Minor modifications to April and June 2000 figures resulted in an update to the total for June quarter 2000. This was due to a comprehensive review of bypass data.

Source: Metropolitan Ambulance Service

Due to ambulance industrial dispute in May and June 2001, the source included Metropolitan Health Services.

4. Access to Critical Care Services

How many hospital beds are available for patients who need intensive care?

Table 4.1 Average number of public hospital intensive care beds available and open at 9.00a.m., by Month^{1 2}

	Apr-00	May-00	Jun-00	Jul-00	Aug-00	Sep-00	Oct-00	Nov-00	Dec-00	Jan-01	Feb-01	Mar-01	Apr-01	May-01	Jun-01
Available ³	3.0	3.0	4.0	3.6	2.2	2.3	3.0	3.5	4.2	4.4	3.9	4.2	4.6	2.9	4.9
Total Open ⁴	92.0	93.0	94.0	92.0	92.5	97.0	98.9	100.4	98.4	103.1	104.7	105.9	105.8	107.8	105.6

¹ Based upon hospital census taken at 9.00a.m. daily.

² The data in this table represents an average for each month and varies from Table 4.3 which gives averages for the quarter.

³ Available beds are unoccupied beds which are staffed, functional and available to receive new patients.

⁴ Total open beds are all functioning and staffed beds, regardless of whether they are occupied.

Cardio thoracic beds at Royal Melbourne Hospital and The Alfred have been included in total open beds since November 2000.

Source: Office of the Coordinator of Emergency and Critical Care Services.

How many hospital beds are available for patients who need coronary care?

Table 4.2 Average number of public hospital coronary care beds available and open at 9.00a.m., by Month¹

	Apr-00	May-00	Jun-00	Jul-00	Aug-00	Sep-00	Oct-00	Nov-00	Dec-00	Jan-01	Feb-01	Mar-01	Apr-01	May-01	Jun-01
Available	6.0	5.0	5.0	4.0	3.1	4.5	4.6	3.7	7.1	7.0	7.7	7.8	7.4	6.4	6.5
Total Open	73.0	73.0	72.0	73.0	71.5	69.5	68.3	70.2	71.2	71.9	71.4	74.9	73.3	72.3	72.9

¹Notes under Table 4.1 apply.

Source: Office of the Coordinator of Emergency and Critical Care Services.

How many hospital beds are available for patients who need intensive care?

Table 4.3 Average number of public hospital intensive care beds available and open at 9.00a.m., by Hospital ¹

Hospital	June quarter 2001	
	Available ²	Total Open ³
Major metropolitan hospitals ⁴		
Austin and Repatriation Medical Centre	0.2	12.2
Box Hill Hospital	0.5	6.1
Dandenong Hospital	0.3	6.6
Frankston Hospital	0.7	6.0
Maroondah Hospital	0.6	3.8
Monash Medical Centre	0.4	9.5
Northern Hospital	0.2	6.1
Royal Melbourne Hospital	0.2	17.1
St Vincent's Hospital	0.2	8.7
The Alfred	0.7	22.3
Western Hospital	0.2	8.0
Total ⁵	4.1	106.4

¹ Based upon hospital census taken at 9.00a.m. daily.

² Available beds are unoccupied beds which are staffed, functional and available to receive new patients.

³ Total open beds are all functioning and staffed beds, regardless of whether they are occupied.
Cardio thoracic beds at Royal Melbourne Hospital and The Alfred have been included in total open beds since November 2000.

⁴ Major metropolitan hospitals contain the campuses listed in the Introduction.

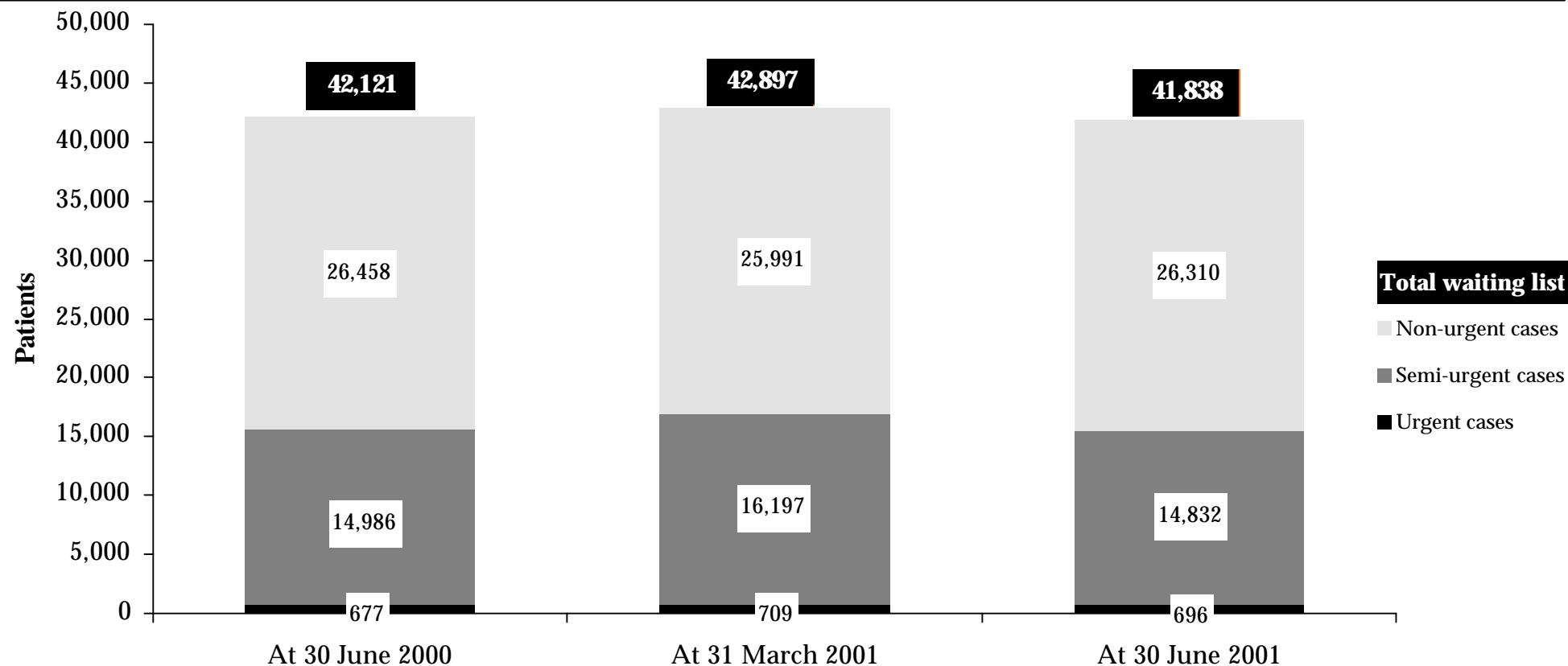
⁵ The data in this table represents an average for the quarter and varies from tables 4.1 and 4.2 which are averages for each month.

Source: Office of the Coordinator of Emergency and Critical Care Services.

5. Access To Elective Surgery

How many people are on hospital waiting lists for elective surgery?

Figure 5.1 Waiting list by urgency^{1 2 3 4}



¹ From 1 July 1999, Victoria adopted the national definition for waiting list numbers, which counts all patients on booking or waiting lists.

² The waiting list patient categories are:

- Urgent cases (waiting list category 1): Admission within 30 days desirable for a condition that has the potential to deteriorate quickly to the point that it may become an emergency.
- Semi-urgent cases (waiting list category 2): Admission within 90 days desirable for a condition causing some pain, dysfunction or disability but which is not likely to deteriorate quickly or become an emergency.
- Non-urgent cases (waiting list category 3): Admission at some time in the future acceptable for a condition causing minimal or no pain, dysfunction or disability which is very unlikely to deteriorate quickly and which does not have the potential to become an emergency.

³ March quarter 2001 data have been amended from the previous quarter's report.

⁴ June quarter 2001 data are provisional.

How many people are on hospital waiting lists for elective surgery?

Table 5.1 Waiting lists by Urgency, by Individual Hospital^{1 2 3 4}

Hospital	Urgent cases			Semi-urgent cases			Non-urgent cases		
	30 Jun 2000	31 Mar 2001	30 Jun 2001	30 Jun 2000	31 Mar 2001	30 Jun 2001	30 Jun 2000	31 Mar 2001	30 Jun 2001
Major metropolitan hospitals ⁵									
Angliss Health Services	25	8	21	176	140	191	235	272	229
Austin and Repatriation Medical Centre	43	78	51	912	1,115	1,219	1,373	1,409	1,400
Box Hill Hospital	17	34	25	383	588	507	664	774	712
Dandenong Hospital	37	34	29	510	649	704	1,662	1,876	1,730
Frankston Hospital	54	57	57	1,784	1,742	1,686	1,929	1,723	1,534
Maroondah Hospital	16	24	13	176	259	267	1,088	710	631
Monash Medical Centre	76	89	90	685	930	950	2,951	3,001	2,776
Royal Melbourne Hospital	63	65	55	846	837	908	2,026	1,882	1,787
St Vincent's Hospital	41	46	46	1,008	1,195	1,182	913	851	822
Sunshine Hospital	2	1	3	113	68	60	379	243	266
The Alfred	98	68	87	1,802	1,992	1,937	1,842	1,725	1,541
The Northern Hospital	25	32	26	864	982	950	2,315	2,047	2,092
Western Hospital	47	30	24	631	692	714	1,098	1,061	921
Other metropolitan hospitals									
Royal Children's Hospital	24	27	20	130	174	175	1,088	1,135	1,117
Royal Women's Hospital	32	18	29	278	237	190	544	487	461
Sandringham & District Memorial Hospital	10	8	6	188	242	199	866	605	539
The Royal Victorian Eye and Ear Hospital ⁶	0	12	21	2,773	2,614	1,164	120	553	1,999

¹ From 1 July 1999, Victoria has adopted the national definition for waiting list numbers. The new definition counts all patients on booking or waiting lists.

² The data involved may be small. Small absolute change may have a large impact on the percentage change.

³ March quarter 2001 data have been amended from the previous quarter's report.

⁴ June quarter 2001 data are provisional.

⁵ Major metropolitan hospitals contain the campuses listed in the Introduction.

Table 5.1 Waiting lists by Urgency, by Individual Hospital (continued)

Hospital	Urgent cases			Semi-urgent cases			Non-urgent cases		
	30 Jun 2000	31 Mar 2001	30 Jun 2001	30 Jun 2000	31 Mar 2001	30 Jun 2001	30 Jun 2000	31 Mar 2001	30 Jun 2001
Major regional hospitals									
Ballarat Health Services	5	4	0	363	318	304	1,370	1,323	1,174
Barwon Health	21	16	12	434	510	544	1,701	1,858	1,922
Bendigo Health Care Group	10	11	11	263	338	426	798	802	774
Goulburn Valley Health	20	18	18	183	169	162	336	287	320
New Latrobe Regional Hospital	4	17	22	94	165	139	637	666	656
Other rural hospitals									
Wangaratta District Base Hospital	2	11	11	279	163	98	84	214	274
West Gippsland Hospital ⁶	5	1	19	111	78	156	439	487	633
Total	677	709	696	14,986	16,197	14,832	26,458	25,991	26,310

⁶ March quarter 2001 data are provisional for The Royal Victorian Eye & Ear Hospital and West Gippsland Healthcare Group.

Source: Elective Surgery Information System.

What is the throughput of people waiting for elective surgery?

Table 5.2 Admissions and cancellations, by Individual Hospital 1 2 3

Hospital	Patients on Waiting Lists			Admissions from Waiting Lists			Patients Cancelled from Waiting Lists		
	at 30 Jun 2000	at 31 Mar 2001	at 30 Jun 2001	During the Quarter			During the Quarter		
				Jun-00	Mar-01	Jun-01	Jun-00	Mar-01	Jun-01
Major metropolitan hospitals ⁴									
Angliss Health Services	436	420	441	883	612	698	164	84	66
Austin and Repatriation Medical Centre	2,328	2,602	2,670	1,939	1,709	1,838	401	335	311
Box Hill Hospital	1,064	1,396	1,244	1,405	1,086	1,368	186	180	203
Dandenong Hospital	2,209	2,559	2,463	605	647	985	223	275	547
Frankston Hospital	3,767	3,522	3,277	1,181	1,222	1,373	379	799	615
Maroondah Hospital	1,280	993	911	1,000	793	832	213	207	145
Monash Medical Centre	3,712	4,020	3,816	2,075	1,941	2,388	541	589	709
Royal Melbourne Hospital	2,935	2,784	2,750	1,687	1,838	1,817	569	455	432
St Vincent's Hospital	1,962	2,092	2,050	1,283	1,163	1,365	228	176	278
Sunshine Hospital	494	312	329	601	702	684	106	127	122
The Alfred	3,742	3,785	3,565	1,376	1,396	1,690	405	633	415
The Northern Hospital	3,204	3,061	3,068	1,144	1,012	1,140	391	606	295
Western Hospital	1,776	1,783	1,659	1,419	1,250	1,323	336	159	391
Other metropolitan hospitals									
Royal Children's Hospital	1,242	1,336	1,312	2,389	2,178	2,558	333	273	237
Royal Women's Hospital	854	742	680	1,169	691	820	229	242	242
Sandringham & District Memorial Hospital	1,064	855	744	426	546	627	125	331	226
The Royal Victorian Eye and Ear Hospital ⁵	2,893	3,179	3,184	2,716	2,266	2,770	290	376	376

¹ From 1 July 1999, Victoria has adopted the national definition for waiting list numbers. The new definition counts all patients on either the former booking or waiting lists.

² March quarter 2001 data have been amended from the previous quarter's report.

³ June quarter 2001 data are provisional.

⁴ Major metropolitan hospitals contain the campuses listed in the Introduction.

Table 5.2 Admissions and cancellations, by Individual Hospital (continued)

Hospital	Patients on Waiting Lists			Admissions from Waiting Lists			Patients Cancelled from Waiting Lists		
	at 30 Jun 2000	at 31 Mar 2001	at 30 Jun 2001	During the Quarter			During the Quarter		
				Jun-00	Mar-01	Jun-01	Jun-00	Mar-01	Jun-01
Major regional hospitals									
Ballarat Health Services	1,738	1,645	1,478	677	581	683	299	108	249
Barwon Health	2,156	2,384	2,478	1,158	739	858	173	207	247
Bendigo Health Care Group	1,071	1,151	1,211	717	635	643	127	148	105
Goulburn Valley Health	539	474	500	698	610	628	96	154	86
New Latrobe Regional Hospital	735	848	817	1,099	1,070	1,092	186	203	82
Other rural hospitals									
Wangaratta District Base Hospital	365	388	383	559	563	618	69	81	51
West Gippsland Hospital ⁵	555	566	808	464	379	539	82	120	81
Total	42,121	42,897	41,838	28,670	25,629	29,337	6,151	6,868	6,511

⁵ March quarter 2001 data are provisional for The Royal Victorian Eye & Ear Hospital and West Gippsland Healthcare Group.

Source: Elective Surgery Information System.

How many people are on hospital waiting lists for longer than the ideal time?

Table 5.3 People on elective surgery waiting lists for longer than ideal time, by Individual Hospital^{1 2 3 4}

Hospital	Urgent cases waiting over 30 days			Semi-urgent cases waiting over 90 days		
	30 Jun 2000	31 Mar 2001	30 Jun 2001	30 Jun 2000	31 Mar 2001	30 Jun 2001
Major metropolitan hospitals ⁵						
Angliss Health Services	0	0	0	1	0	0
Austin & Repatriation Medical Centre	0	0	0	325	538	590
Box Hill Hospital	0	0	0	28	86	112
Dandenong Hospital	0	0	0	188	424	347
Frankston Hospital	0	0	0	736	1,060	892
Maroondah Hospital	0	0	0	8	63	59
Monash Medical Centre	0	0	0	206	395	356
Royal Melbourne Hospital	0	0	0	334	350	427
St Vincent's Hospital	0	0	0	509	612	636
Sunshine Hospital	0	0	0	14	6	11
The Alfred	0	0	0	1,088	1,457	1,350
The Northern Hospital	0	0	0	334	504	458
Western Hospital	0	0	0	211	293	286
Other metropolitan hospitals						
Royal Children's Hospital	0	0	0	1	0	0
Royal Women's Hospital	0	0	0	0	0	0
Sandringham & District Memorial Hospital	0	0	0	57	48	94
The Royal Victorian Eye and Ear Hospital ⁶	0	0	0	1,239	1,468	406

¹ From 1 July 1999, Victoria has adopted the national definition for waiting list numbers. The new definition counts all patients on either the former booking or waiting lists.

² The data involved may be small. Small absolute change may have a large impact on the percentage change.

³ March quarter 2001 data have been amended from the previous quarter's report.

⁴ June quarter 2001 data are provisional.

⁵ Major metropolitan hospitals contain the campuses listed in the Introduction.

Table 5.3 People on elective surgery waiting lists for longer than ideal time, by Individual Hospital (continued)

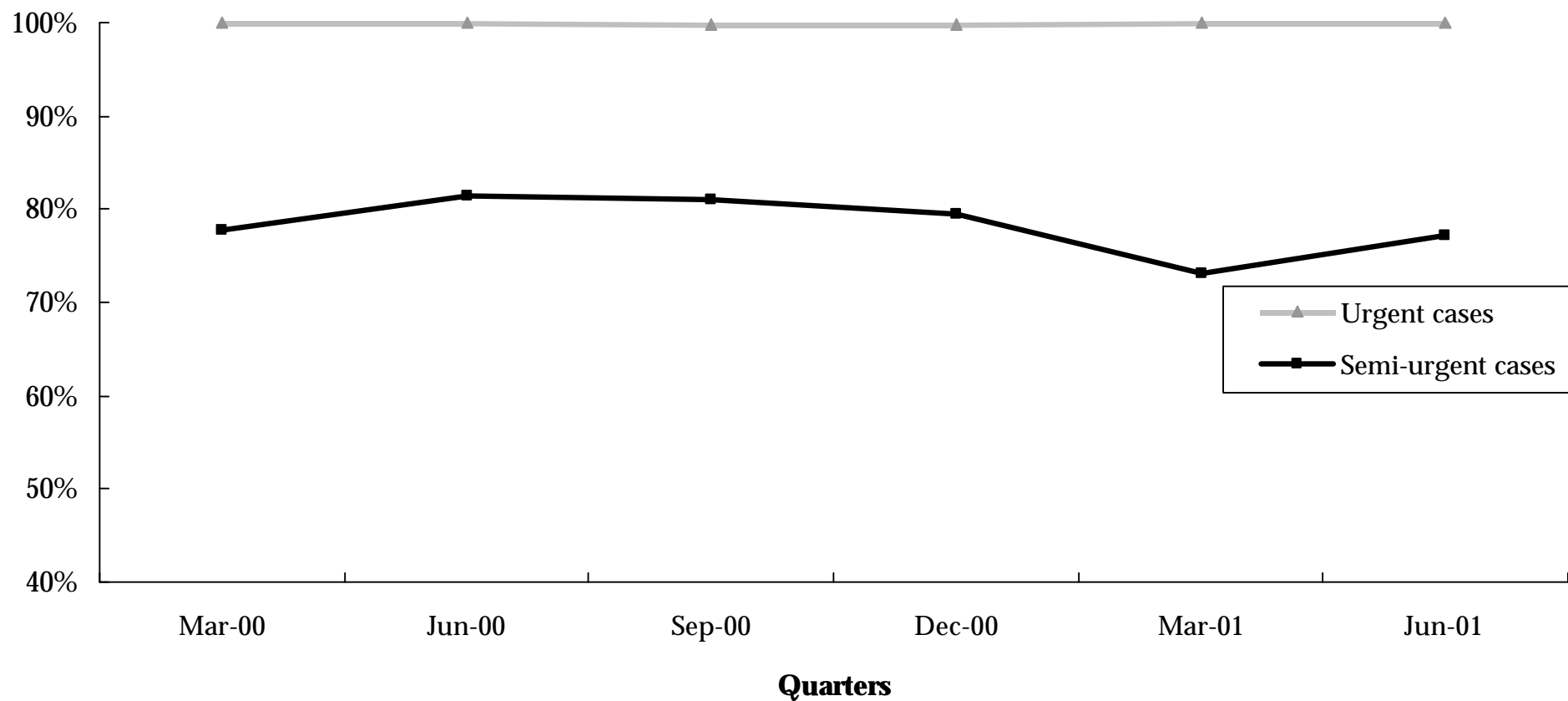
Hospital	Urgent cases waiting over 30 days			Semi-urgent cases waiting over 90 days		
	30 Jun 2000	31 Mar 2001	30 Jun 2001	30 Jun 2000	31 Mar 2001	30 Jun 2001
Major regional hospitals						
Ballarat Health Services	0	0		169	139	121
Barwon Health	0	0	0	70	188	180
Bendigo Health Care Group	0	0	0	84	155	191
Goulburn Valley Health	0	0	0	0	0	0
New Latrobe Regional Hospital	0	0	0	0	16	7
Other rural hospitals						
Wangaratta District Base Hospital	0	0	0	98	39	20
West Gippsland Hospital ⁶	0	0	0	4	1	16
Total	0	0	0	5,704	7,842	6,559

⁶ March quarter 2001 data are provisional for The Royal Victorian Eye & Ear Hospital and West Gippsland Healthcare Group.

Source: Elective Surgery Information System.

What percentage of patients are admitted within clinically ideal times?

Figure 5.4 Percentage of patients from elective surgery waiting lists who were admitted within the ideal time, by Urgency ^{1 2}



¹ March quarter 2001 data have been amended from the previous quarter's report.

² June quarter 2001 data are provisional.

What percentage of patients are admitted within clinically ideal times?

Table 5.4 Percentage of people from elective surgery waiting lists who were admitted within the ideal time, by Urgency, by Individual Hospital^{1 2 3}

Hospital	Urgent cases admitted within 30 days during the quarter				Semi-urgent cases admitted within 90 days during the quarter			
	March 2001		June 2001		March 2001		June 2001	
	Number	Percentage	Number	Percentage	Number	Percentage	Number	Percentage
Major metropolitan hospitals⁴								
Angliss Health Services	72	100.0%	87	100.0%	338	99.4%	325	99.7%
Austin & Repatriation Medical Centre	489	100.0%	528	100.0%	624	75.8%	684	76.0%
Box Hill Hospital	257	98.8%	243	100.0%	527	82.1%	690	83.3%
Dandenong Hospital	302	100.0%	315	100.0%	107	44.4%	183	49.3%
Frankston Hospital	263	100.0%	355	100.0%	222	35.6%	315	45.1%
Maroondah Hospital	137	100.0%	152	100.0%	196	72.3%	251	77.5%
Monash Medical Centre	528	100.0%	668	100.0%	466	75.4%	542	72.8%
Royal Melbourne Hospital	549	100.0%	588	100.0%	531	69.8%	536	79.1%
St Vincent's Hospital	300	100.0%	302	100.0%	521	71.6%	692	74.5%
Sunshine Hospital	34	100.0%	26	100.0%	166	97.6%	157	95.2%
The Alfred	545	100.0%	605	100.0%	430	60.6%	520	62.9%
The Northern Hospital	187	100.0%	221	100.0%	429	73.6%	494	72.9%
Western Hospital	197	100.0%	231	100.0%	489	71.0%	562	76.0%
Other metropolitan hospitals								
Royal Children's Hospital	316	100.0%	367	100.0%	404	100.0%	485	100.0%
Royal Women's Hospital	163	100.0%	178	100.0%	356	100.0%	414	100.0%
Sandringham & District Memorial Hospital	39	100.0%	75	100.0%	262	91.6%	292	90.7%
The Royal Victorian Eye and Ear Hospital ⁵	46	100.0%	131	100.0%	1,267	62.8%	1,439	72.6%

¹ The data involved may be small. Small absolute change may have a large impact on the percentage change.

² March quarter 2001 data have been amended from the previous quarter's report.

³ June quarter 2001 data are provisional.

⁴ Major metropolitan hospitals contain the campuses listed in the Introduction.

Table 5.4 Percentage of people from elective surgery waiting lists who were admitted within the ideal time, by Urgency, by Individual Hospital (continued)

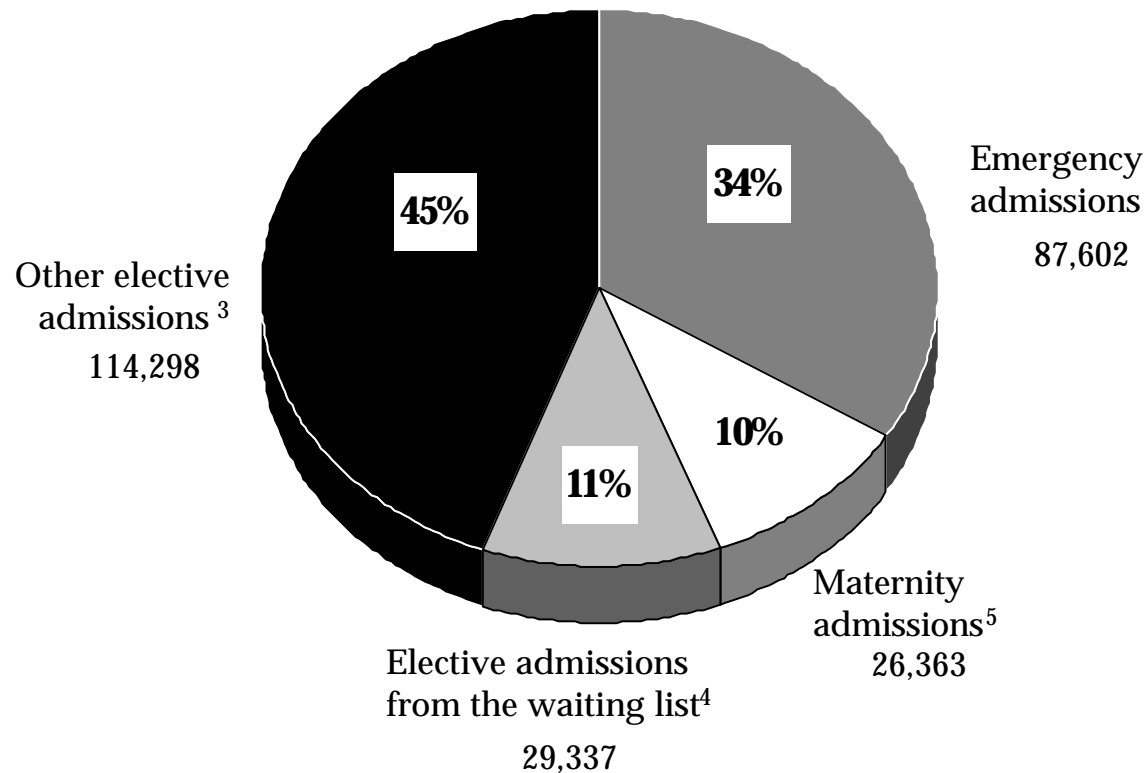
Hospital	Urgent cases admitted within 30 days during the quarter				Semi-urgent cases admitted within 90 days during the quarter			
	March 2001		June 2001		March 2001		June 2001	
	Number	Percentage	Number	Percentage	Number	Percentage	Number	Percentage
Major regional hospitals								
Ballarat Health Services	28	100.0%	21	100.0%	278	77.7%	313	82.4%
Barwon Health	50	100.0%	66	100.0%	328	70.8%	409	79.0%
Bendigo Health Care Group	129	100.0%	123	100.0%	151	58.1%	150	67.6%
Goulburn Valley Health	134	100.0%	149	100.0%	352	99.4%	333	100.0%
New Latrobe Regional Hospital	108	100.0%	126	100.0%	342	95.0%	357	96.7%
Other rural hospitals								
Wangaratta District Base Hospital	23	100.0%	79	100.0%	255	75.4%	270	90.0%
West Gippsland Hospital ⁵	66	100.0%	136	100.0%	123	95.3%	155	96.9%
Total	4,962	99.94%	5,772	100.00%	9,164	73.2%	10,568	77.2%

⁵ March quarter 2001 data are provisional for The Royal Victorian Eye & Ear Hospital and West Gippsland Healthcare Group.

Source: Elective Surgery Information System.

What is the admission source of total hospital activity?

Figure 5.6 Separations by admission type: June quarter 2001 ^{1 2}



¹ Percentages may not add due to rounding.

² June quarter 2001 data are provisional.

³ Includes statistical admissions, which refer to a change in patient care type.

⁴ Patients admitted from the Elective Surgery Information System waiting list during the quarter.

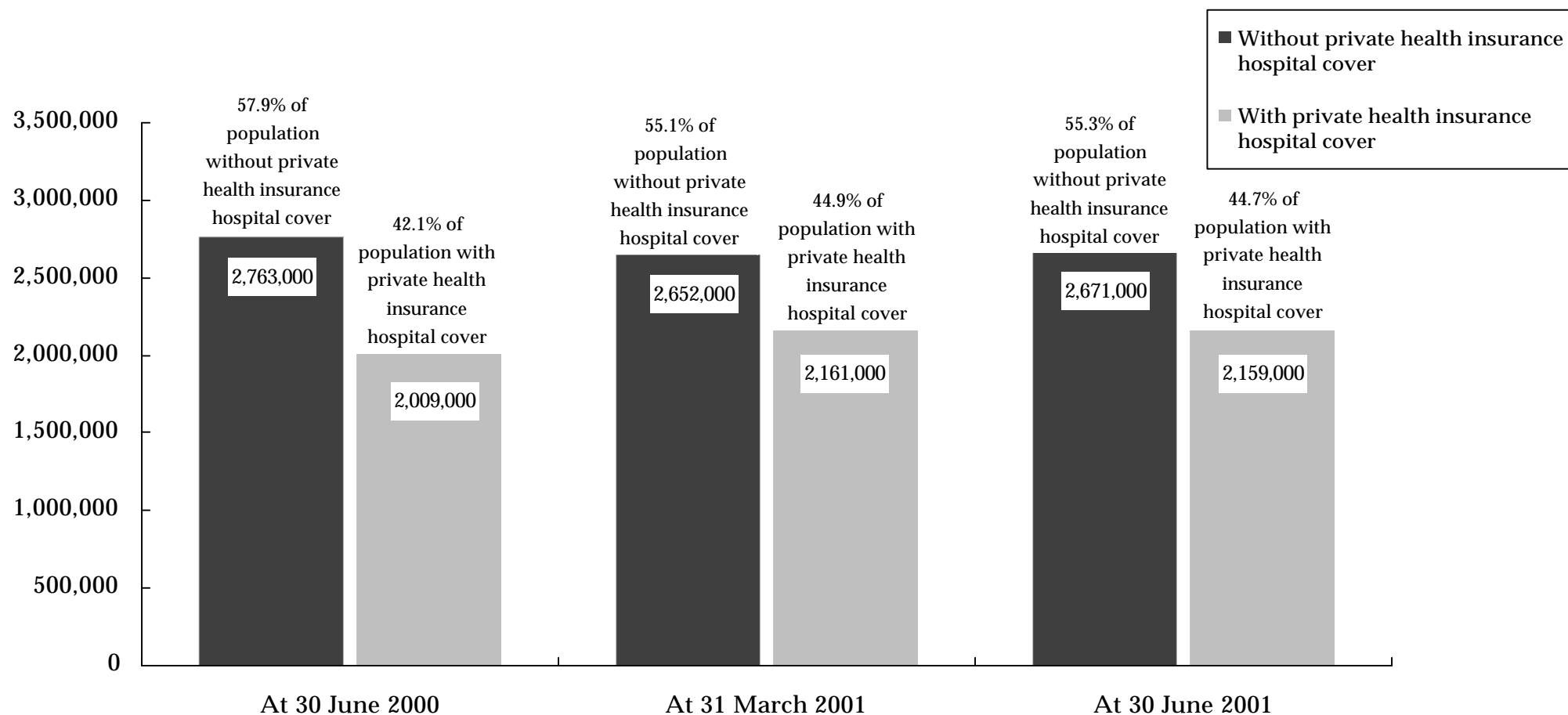
⁵ Includes maternity and newborn admissions.

Source: Victorian Admitted Episode Dataset (21 August 2001 update).

6. Private Health Insurance

How many Victorians have private health insurance hospital cover?

Figure 6.1 Health insurance status of Victorians ^{1 2 3}



¹ Data are for all people covered by insurance, that is, contributors, partners and dependants.

² Data for current and previous quarters are provisional.

³ Statistics reflect total persons covered by any level of hospital private health insurance.

Source: Private Health Insurance Administration Council (21 August 2001).

6. Accredited Victorian Public Hospitals

Which public hospitals are accredited?

Table 6.1 Accredited hospitals that are funded through the Acute Health Division, Department of Human Services as at 30 June 2001

Hospital	Accreditation expiry date	Accrediting organisation
Northern Health		
The Northern Hospital	19 January 2003	ACHS EQuIP
Eastern Health		
Angliss Health Services	7 December 2003	ACHS EQuIP
Box Hill Hospital	31 January 2005	ACHS EQuIP
Maroondah Hospital	5 August 2001	ACHS EQuIP
Yarra Ranges Health Service	3 August 2004	ACHS EQuIP
Melbourne Health		
Royal Melbourne Hospital	14 January 2003	ACHS EQuIP
Bayside Health		
Caulfield General Medical Centre	4 June 2002	ACHS EQuIP
The Alfred	30 April 2005	ACHS EQuIP
Sandringham & District Memorial Hospital	30 April 2002	ACHS EQuIP
Austin & Repatriation Medical Centre *		
Austin & Repatriation Medical Centre	4 January 2004	ACHS EQuIP
Royal Talbot Rehabilitation Centre	4 January 2004	ACHS EQuIP
Western Health		
Sunshine Hospital	9 May 2003	ACHS EQuIP
Western Hospital	25 January 2003	ACHS EQuIP
Williamstown Hospital	1 January 2003	ACHS EQuIP
Southern Health *		
Dandenong Hospital	25 January 2002	ACHS EQuIP
Hampton Rehabilitation Hospital	25 January 2002	ACHS EQuIP
Monash Medical Centre - Clayton	25 January 2002	ACHS EQuIP
Monash Medical Centre - Moorabbin	25 January 2002	ACHS EQuIP
Women's and Children's Health *		
Royal Children's Hospital	29 November 2002	ACHS EQuIP
Royal Women's Hospital	29 November 2002	ACHS EQuIP

* Health Service Accreditation

Table 6.1 Accredited hospitals that are funded through the Acute Health Division, Department of Human Services as at 30 June 2001 (continued)

Hospital	Accreditation expiry date	Accrediting organisation
Peninsula Health *		
Frankston Hospital	11 February 2003	ACHS EQuIP
Rosebud Hospital	11 February 2003	ACHS EQuIP
Individual and Denominational Health		
Peter MacCallum Cancer Institute	9 January 2002	ACHS EQuIP
The Royal Victorian Eye & Ear Hospital	26 February 2003	ACHS EQuIP
Mercy Public Hospital, East Melbourne Campus	6 May 2003	ACHS EQuIP
Mercy Public Hospitals Inc. Werribee Campus	26 July 2002	ACHS EQuIP
St Vincent's Hospital (Melbourne) Ltd	22 January 2005	ACHS EQuIP
Barwon South Western Region		
Barwon Health - The Geelong Hospital	1 March 2002	ACHS EQuIP
Casterton Memorial Hospital	7 August 2004	ACHS EQuIP
Colac Community Health Services	15 November 2002	ACHS EQuIP
Coleraine & District Hospital	25 October 2002	ACHS EQuIP
Hesse Rural Health Service	To undergo accreditation in November 2001	ACHS EQuIP
Heywood & District Memorial Hospital	10 July 1998 - To undergo survey in July 2001	ACHS EQuIP
Lorne Community Hospital	19 Feb 2000 - To undergo survey in November 2001	ACHS EQuIP
Moyne Health Services	6 April 2003	ACHS EQuIP
Otway Health & Community Services	April 2003	QICSA
Portland & District Hospital	19 July 2004	ACHS EQuIP
Southwest Healthcare, Corangamite Campus*	19 February 2002	ACHS EQuIP
Southwest Healthcare, Warrnambool Campus*	23 September 2002	ACHS EQuIP
Terang & Mortlake Health Service	6 December 2002	ACHS EQuIP
Timboon & District Health Care Service	17 November 2004	ACHS EQuIP
Western District Health Service	24 June 2005	ACHS EQuIP

¹ South West Healthcare will be surveyed for accreditation as a single entity in May 2002.

Table 6.1 Accredited hospitals that are funded through the Acute Health Division, Department of Human Services as at 30 June 2001 (continued)

Hospital	Accreditation expiry date	Accrediting organisation
Grampians Region		
Ballarat Health Services	22 March 2003	ACHS EQuIP
Beaufort & Skipton Health Service	27 September 2001	ACHS EQuIP
Djerriwarrh Health Services	24 July 2003	ACHS EQuIP
Dunmunkle Health Services	25 June 2003	ACHS EQuIP
East Grampians Health Service	17 January 2005	ACHS EQuIP
East Wimmera Health Service	22 November 2002	ACHS EQuIP
Edenhope & District Hospital	7 September 2002	ACHS EQuIP
Hepburn Health Service	2 February 2005	ACHS EQuIP
Stawell District Hospital	24 May 2002	ACHS EQuIP
Rural North West Health	To undergo survey in April 2002	ACHS EQuIP
Wimmera Health Care Group	8 October 2001	ACHS EQuIP
West Wimmera Health Service	17 January 2005	ACHS EQuIP
Gippsland Region		
Bairnsdale Regional Health Service	12 August 2002	ACHS EQuIP
Central Gippsland Health Service	6 January 2002	ACHS EQuIP
Far East Gippsland Health & Support Service	13 July 2002	ACHS EQuIP
Gippsland Southern Health Service	1 December 2001	ACHS EQuIP
LaTrobe Regional Hospital	6 April 2003	ACHS EQuIP
Kooweerup Regional Health Service	6 April 2002	ACHS EQuIP
Omeo District Hospital	21 February 2004	ACHS EQuIP
South Gippsland Hospital	31 March 2003	ISO 9002
Wonthaggi & District Hospital	26 April 2004	ISO 9002
West Gippsland Healthcare Group	18 December 2003	ACHS EQuIP
Yarram & District Health Service	29 July 2002	ACHS EQuIP

Table 6.1 Accredited hospitals that are funded through the Acute Health Division, Department of Human Services as at 30 June 2001 (continued)

Hospital	Accreditation expiry date	Accrediting organisation
Hume Region		
Alexandra District Hospital	3 December 2004	ACHS EQuIP
Alpine Health	23 August 2003	ACHS EQuIP
Beechworth Hospital, The	20 February 2005	ACHS EQuIP
Benalla & District Memorial Hospital	18 August 2002	ACHS EQuIP
Cobram District Hospital	18 August 2001	ACHS EQuIP
Goulburn Valley Health	9 December 2001	ACHS EQuIP
Kilmore & District Hospital, The	19 June 2003	ACHS EQuIP
Mansfield District Hospital	1 September 2002	ISO 9002
Numurkah & District Health Service	22 January 2005	ACHS EQuIP
Nathalia District Hospital	6 November 2003	ACHS EQuIP
Seymour District Memorial Hospital	24 July 2003	ACHS EQuIP
Tallangatta Health Service	25 August 2002	ACHS EQuIP
Upper Murray Health & Community Services	29 November 2002	QICSA
Wangaratta District Base Hospital	18 November 2001	ACHS EQuIP
Wodonga Regional Health Service	20 December 2002	ACHS EQuIP
Yarrawonga District Health Service	5 June 2002	ACHS EQuIP
Yea & District Memorial Hospital	9 November 2002	ACHS EQuIP
Loddon Mallee Region		
Bendigo Health Care Group	14 September 2002	ACHS EQuIP
Boort District Hospital	8 January 2005	ACHS EQuIP
Cohuna District Hospital	19 June 2004	ACHS EQuIP
Echuca Regional Health	31 May 2002	ACHS EQuIP
Inglewood & District Health Service	28 April 2002	ACHS EQuIP
Kerang & District Hospital	3 September 2002	ACHS EQuIP
Kyabram & District Memorial Community Hospital	15 December 2002	ACHS EQuIP
Kyneton District Health Service	2 July 2005	ACHS EQuIP
Maldon Hospital	18 September 2002	ACHS EQuIP
Mallee Track Health & Community Services	To undergo survey in June 2001	ISO 9002
Maryborough District Health Service	7 June 2002	ACHS EQuIP
Manangatang & District Hospital	21 June 2005	ACHS EQuIP
Mildura Base Hospital	To undergo survey in Feb 2002	ACHS EQuIP
McIvor Health & Community Services	28 October 2001	ACHS EQuIP
Mt Alexander Hospital	13 September 2004	ACHS EQuIP
Robinvale District Health Service	To undergo survey in June 2001	ISO 9002
Rochester & Elmore District Health Service	November 2002	ISO 9002
Swan Hill District Hospital	24 February 2002	ACHS EQuIP

8. Glossary

What do the terms used in this report mean?

Admitted Patient

Someone who is an inpatient in a hospital. Sameday patients who are admitted for less than 24 hours are also counted as inpatients but people who attend hospital for outpatient clinics are not.

Cancellation

The request for elective surgery has been withdrawn and the patient is removed from this hospital's Waiting List without admission for the awaited procedure. This can occur for clinical reasons, transfer of the patient to another hospital, or at the request of the patient.

Casemix Funded

A system of funding hospitals according to the actual number and type of services that they provide. Casemix funding was introduced for most Victorian public hospitals in July 1993.

Coronary Care

A hospital unit with specialised staff and equipment to care for patients with heart disease.

Elective Admission

A planned admission to hospital. Emergency admissions and transfers from other hospitals are not counted as elective admissions.

Elective Surgery

Planned surgery that is not an emergency requiring hospital admission within 24 hours.

Emergency Admission

An unplanned admission to hospital due to unexpected illness or injury that requires urgent care.

Emergency Department

A hospital department that specialises in providing emergency care for people who are in need of urgent care (ambulance cases for example) and people who choose to seek treatment in an emergency department.

Intensive Care

A hospital unit with specialised staff and equipment to provide continuous care for critically ill, injured or post-operative patients.

Non Sameday Patient

In the context of this report, a non sameday patient is an inpatient who leaves hospital on a later date than when they were admitted.

Separation

When an inpatient leaves a hospital. This is the technical way of counting the number of inpatients treated by a hospital.

Step Down Bed

Hospital beds with specialised staff and equipment to care for patients who no longer need coronary or intensive care but are not yet ready to move to a general hospital ward.

Transfer

When an inpatient is moved from one hospital to another. This might be in order to obtain a specialised treatment not available at the first hospital or because of the patient's preferences.

Waiting List Hospital

A major public hospital that performs elective surgery for public patients and uses a waiting list to properly keep track of people who require elective surgery.