

Hospital Services Report

March 1999 Quarter

Notes

This document contains the most up-to-date information available at the time of preparation.

This *Hospital Services Report* is available on the Department of Human Services Internet site located at:

<http://www.dhs.vic.gov.au/ahs/pub.htm>

Design and production by Department of Human Services, Melbourne, Victoria.

March 1999

© Copyright Department of Human Service 1999.

This publication is copyright. No part may be reproduced by any process except in accordance with the provisions of the *Copyright Act 1968*.

Contents

<i>Introduction</i>	1
1. Private Health Insurance - March 1999 Quarter	2
2. Hospital Admitted Patient Activity - March 1999 Quarter	3
3. Access to Emergency Services - March 1999 Quarter	6
4. Access to Critical Care Services - March 1999 Quarter	14
5. Access to Elective Surgery - March 1999 Quarter	15
6. Glossary	27

Introduction

Consumers, health care providers and government all need information on the quality of health services. Public access to information assists consumers to understand the health care system, it assists providers of health services in planning and increases the accountability of the Department of Human Services to the people in the state of Victoria, Australia.

The *Hospital Services Report* was introduced in 1995. This edition includes data for the March Quarter 1999, which covers the months of January, February and March.

The information included in this report is often requested from the Department. Since technical information of this nature is very difficult to interpret, each graph and table needs to be carefully considered in the context of the complexity of the health care system. Department staff, hospital staff, general practitioners and other health care professionals may be able to assist you to interpret this report.

Chest Pain Evaluation Areas

In accordance with a recommendation of the *Ministerial Review of Coronary Care Services*, the Department of Human Services has provided funding for the Monash Medical Centre, the Royal Melbourne Hospital and The Alfred to pilot Chest Pain Evaluation Areas (CPEAs).

These are dedicated areas within or adjacent to emergency departments in which selected low risk patients are systematically evaluated for the potential for heart attack or angina. This is an alternative to the traditional approach of

evaluating most of these patients in a coronary care unit, which is a consequence of the difficulty associated with diagnosing the causes of chest pain. The CPEA approach to patient care first evolved in the USA in the early 1980s.

The approach to the evaluation of patients in the Victorian CPEAs varies slightly from hospital to hospital. However, the evaluation generally occurs for up to a maximum of 12 hours and involves continuous ECG monitoring, serial blood tests and an exercise stress test. All patients evaluated within the CPEAs who are discharged without a definitive cardiac diagnosis are followed up at 30 days by telephone in order to assess their outcomes.

There are a range of benefits which may be gained from the CPEA model. Firstly it should result in enhanced clinical outcomes of patients due to improvements in the speed and accuracy of diagnosis of patients with chest pain. In addition, the CPEAs should also assist hospitals to meet demand through:

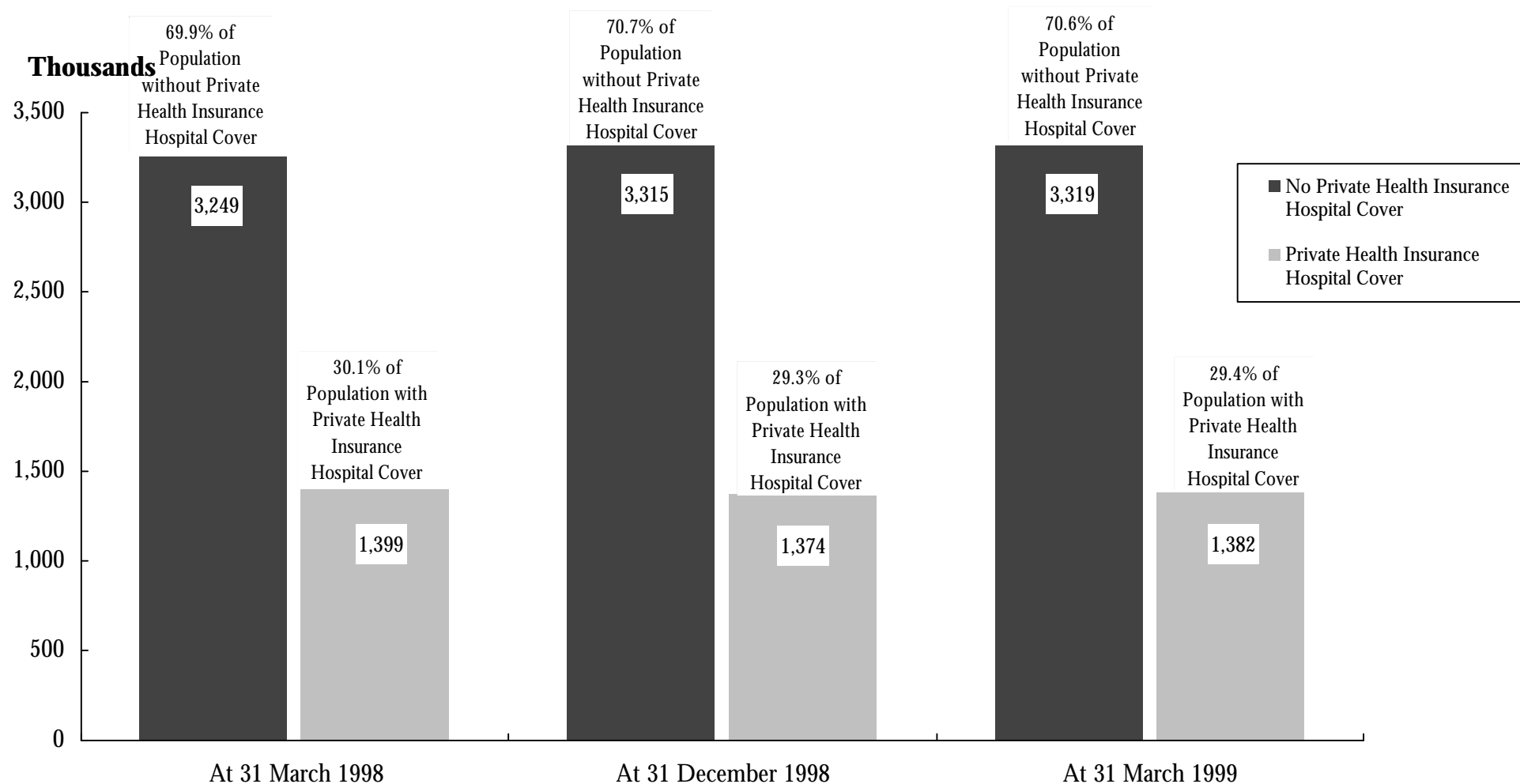
- a possible reduction in the pressure on Coronary Care Units (CCUs) and consequent reduction in coronary care transfers
- the targeting of emergency department and CCU resources to patients of appropriate levels of acuity as a result of a decrease in admission of patients to the CCU with chest pain of non cardiac origin
- reduction in the costs associated with evaluating and treating patients with chest pain.

The CPEAs commenced operation in late 1998/early 1999 and will conclude in mid 2000. A cost benefit analysis of the pilots will be undertaken in 2000–2001.

1. Private Health Insurance

How many Victorians have private health insurance hospital cover?

Figure 1.1 Health Insurance Status of Victorians ^{1 2 3}



¹ Data are for all people covered by insurance, that is, contributors, partners and dependants.

² Data for current and previous quarters are provisional.

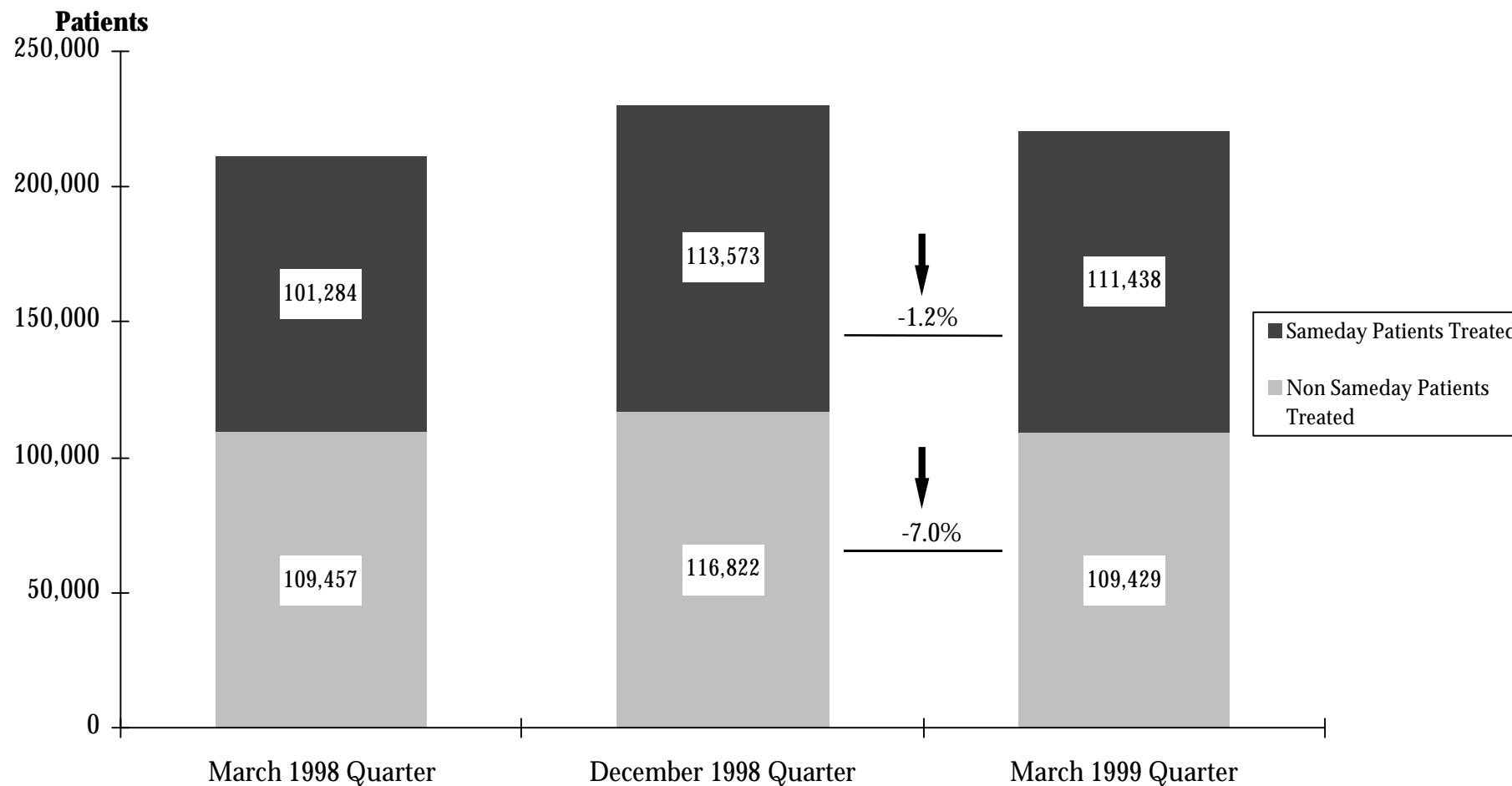
³ Statistics reflect total persons covered by any level of hospital private health insurance.

Source: Private Health Insurance Administration Council

2. Hospital Admitted Patient Activity

How many patients are admitted to hospital?

Figure 2.1 Admitted Patients in Public Hospitals^{1 2 3}



¹ Data are for casemix-funded acute public hospital patients. The data refer to the number of “separations” (ie. the number of patients that have been discharged from hospital).

² 1998/99 data are provisional.

³ “Sameday” patients are admitted and discharged on the same day.

Source: Victorian Inpatient Minimum Database (21 September update).

How many patients are admitted to hospital?

Table 2.1 Admitted Patients by Individual Hospital ^{1 2 3}

Hospital	March Quarter 1998		December Quarter 1998		March Quarter 1999		% Change December 1998 to March 1999		
	Non-sameday only	All	Non-sameday only	All	Non-sameday only	All	Non-sameday only	All	
North Western Health Care Network									
Royal Melbourne Hospital	5,952	14,618	5,695	14,292	5,435	13,755	-4.6%	-3.8%	
Western Hospital ⁴	6,439	12,873	4,633	8,172	4,401	7,900	N/A	N/A	
Northern Hospital ⁵	1,855	3,039	3,568	5,831	3,145	5,246	-11.9%	-10.0%	
Preston & Northcote Community Hospital ⁶	646	1,045	-	-	-	-	N/A	N/A	
Other North Western Health Care Network Hospitals ⁴	822	1,275	3,108	6,902	2,995	6,993	-3.6%	1.3%	
Inner and Eastern Health Care Network									
The Angliss Health Services	2,701	3,873	2,453	4,180	2,319	4,276	-5.5%	2.3%	
Box Hill Hospital	3,895	6,867	4,282	8,075	4,253	7,754	-0.7%	-4.0%	
Caulfield General Medical Centre	793	2,028	840	2,294	583	1,791	-30.6%	-21.9%	
Maroondah Hospital	1,769	3,386	2,005	3,760	1,731	3,328	-13.7%	-11.5%	
Peter MacCallum Cancer Institute	1,242	2,935	1,244	2,999	1,219	2,912	-2.0%	-2.9%	
The Royal Victorian Eye and Ear Hospital	1,499	2,684	1,607	2,933	1,371	2,691	-14.7%	-8.3%	
The Alfred	4,601	8,967	4,786	11,410	4,420	10,940	-7.6%	-4.1%	
Other Inner and Eastern Health Care Network Hospitals ⁷	889	1,591	338	526	156	333	N/A	N/A	
Southern Health Care Network									
Dandenong Hospital	4,088	6,035	4,461	6,570	4,320	6,475	-3.2%	-1.4%	
Monash Medical Centre, Clayton ⁸	7,003	16,150	6,137	11,026	5,803	10,677	-5.4%	-3.2%	
Sandringham & District Memorial Hospital	1,135	1,612	1,091	2,208	1,238	2,592	13.5%	17.4%	
Other Southern Health Care Network Hospitals ⁸	-	-	1,542	5,848	1,369	5,637	-11.2%	-3.6%	
Peninsula Health Care Network									
Frankston Hospital	4,091	8,433	4,353	8,745	4,119	8,586	-5.4%	-1.8%	
Other Peninsula Health Care Network Hospitals	680	1,013	758	1,110	711	1,100	-6.2%	-0.9%	

¹ Data relate to acute patients at casemix-funded public hospitals and refer to the number of 'separations' (ie. the number of patients that have been discharged from hospital).

² 1998/99 data are provisional.

³ Non Sameday patients remain in hospital overnight or longer.

⁴ Western Hospital disaggregated and Sunshine Hospital commenced reporting separately from 1 July 1998.

⁵ Northern Hospital opened on 2 February 1998.

⁶ Preston & Northcote Community Hospital (PANCH) closed on 2 February 1998.

⁷ St George's Health Services, included under this category, ceased to treat acute patients from 1 January 1999.

⁸ Monash Medical Centre commenced reporting by separate campuses, Clayton and Moorabbin, from 1 July 1998.

Table 2.1 Admitted Patients by Individual Hospital (cont'd)

Hospital	March Quarter 1998		December Quarter 1998		March Quarter 1999		% Change December 1998 to March 1999	
	Non-sameday only	All	Non-sameday only	All	Non-sameday only	All	Non-sameday only	All
Women's and Children's Health Care Network								
Royal Children's Hospital	3,988	6,872	4,541	7,473	3,804	6,547	-16.2%	-12.4%
Royal Women's Hospital	3,100	6,963	3,042	7,213	2,823	7,014	-7.2%	-2.8%
Other Metropolitan Hospitals								
Austin & Repatriation Medical Centre	5,877	15,187	6,352	16,603	5,691	15,723	-10.4%	-5.3%
Austin & Repatriation - Royal Talbot	101	102	170	170	198	199	16.5%	17.1%
Mercy Hospital for Women	2,147	3,346	2,249	3,723	2,058	3,498	-8.5%	-6.0%
St Vincent's Hospital	3,683	8,762	3,931	9,462	3,647	9,053	-7.2%	-4.3%
Other Metropolitan Hospitals	1,545	3,552	1,725	3,980	1,725	3,871	0.0%	-2.7%
Non Metropolitan Hospitals								
Ballarat Health Services	2,716	4,761	3,073	5,524	2,767	5,279	-10.0%	-4.4%
Barwon Health ⁹	4,861	8,653	5,069	9,582	4,863	9,262	-4.1%	-3.3%
Bendigo Health Care Group	2,434	4,173	2,878	5,023	2,565	4,577	-10.9%	-8.9%
Central Wellington Health Services	1,001	1,813	1,149	2,134	1,094	1,961	-4.8%	-8.1%
Goulburn Valley Health	2,046	2,998	2,414	4,099	2,339	3,915	-3.1%	-4.5%
Latrobe Regional Hospital ¹⁰	2,162	4,595	-	-	-	-	N/A	N/A
New Latrobe Regional Hospital ¹¹	-	-	2,214	4,978	2,172	4,917	-1.9%	-1.2%
Wangaratta District Base Hospital	1,464	2,456	1,491	2,396	1,498	2,434	0.5%	1.6%
Warrnambool & District Base Hospital	1,714	3,001	1,886	3,171	1,719	3,029	-8.9%	-4.5%
Wimmera Health Care Group	983	1,717	1,075	1,829	985	1,703	-8.4%	-6.9%
Wodonga Regional Health Service	1,235	2,782	1,516	3,332	1,404	3,125	-7.4%	-6.2%
Other Non Metropolitan Hospitals	18,300	30,584	19,146	32,822	18,489	31,774	-3.4%	-3.2%
Total	109,457	210,741	116,822	230,395	109,429	220,867	-6.3%	-4.1%

⁹ Barwon Health is formerly known as The Geelong Hospital.

¹⁰ The Latrobe Regional Hospital closed on 1 September 1998.

¹¹ The New Latrobe Regional Hospital opened on 1 September 1998.

Source: Victorian Inpatient Minimum Database (21 September update).

3. Access to Emergency Services

How many patients are treated in emergency departments?

Table 3.1: Patients Treated in Selected Public Hospital Emergency Departments ¹

	March Quarter 1998	December Quarter 1998	March Quarter 1999	% Change December 1998 to March 1999
Patients treated	157,225	158,680	154,600	-2.6%

¹ Data only for hospitals participating in the Emergency Services Enhancement Program / Hospital Access Program. A complete list of these hospitals is given in Table 3.2.

Source: Victorian Emergency Minimum Dataset

How many patients are treated in each hospital emergency department?

Table 3.2 Patients Treated in Hospital Emergency Departments, by Individual Hospitals ^{1 2}

Hospital	March Quarter 1998	December Quarter 1998	March Quarter 1999	% Change December 1998 to March 1999
North Western Health Care Network				
Northern Hospital	6,311	9,521	9,177	-3.6%
Royal Melbourne Hospital	10,674	10,470	10,512	0.4%
Western Hospital ³	15,130	9,188	9,413	2.4%
Inner and Eastern Health Care Network				
The Alfred	10,180	10,110	9,769	-3.4%
The Angliss Health Services	7,915	7,474	7,024	-6.0%
Box Hill Hospital	8,037	8,437	8,260	-2.1%
Maroondah Hospital	6,693	7,197	7,206	0.1%
Southern Health Care Network				
Dandenong Hospital	9,772	10,345	9,977	-3.6%
Monash Medical Centre	11,921	12,302	11,817	-3.9%
Peninsula Health Care Network				
Frankston Hospital	7,405	7,954	7,947	-0.1%

¹ Data only for hospitals participating in the Emergency Services Enhancement Program / Hospital Access Program.

² Data include all emergency department patients, that is, they include patients who are subsequently admitted to hospital and patients who are treated in the emergency department without being admitted to hospital.

³ Western Hospital, Footscray disaggregated in July 1998. Sunshine Hospital figures have been excluded from data prior to July 1998 to enable comparative interpretation of the data.

Table 3.2 Patients Treated in Hospital Emergency Departments, by Individual Hospitals (cont'd)

Hospital	March 1998 Quarter	December 1998 Quarter	March 1999 Quarter	% Change December 1998 to March 1999
Women's and Children's Health Care Network				
Royal Children's Hospital	12,248	13,129	11,778	-10.3%
Metropolitan Non-Network Hospitals				
Austin and Repatriation Medical Centre	8,753	8,829	8,576	-2.9%
St Vincent's Hospital	6,158	6,537	6,540	0.0%
Non Metropolitan Hospitals				
Ballarat Health Services	7,115	7,313	7,273	-0.5%
Barwon Health ⁴	8,769	8,963	9,041	0.9%
Bendigo Health Care Group	7,226	8,342	7,566	-9.3%
Goulburn Valley Health	5,484	5,991	5,927	-1.1%
New Latrobe Regional Hospital ⁵	7,434	6,578	6,797	3.3%
Total	157,225	158,680	154,600	-2.6%

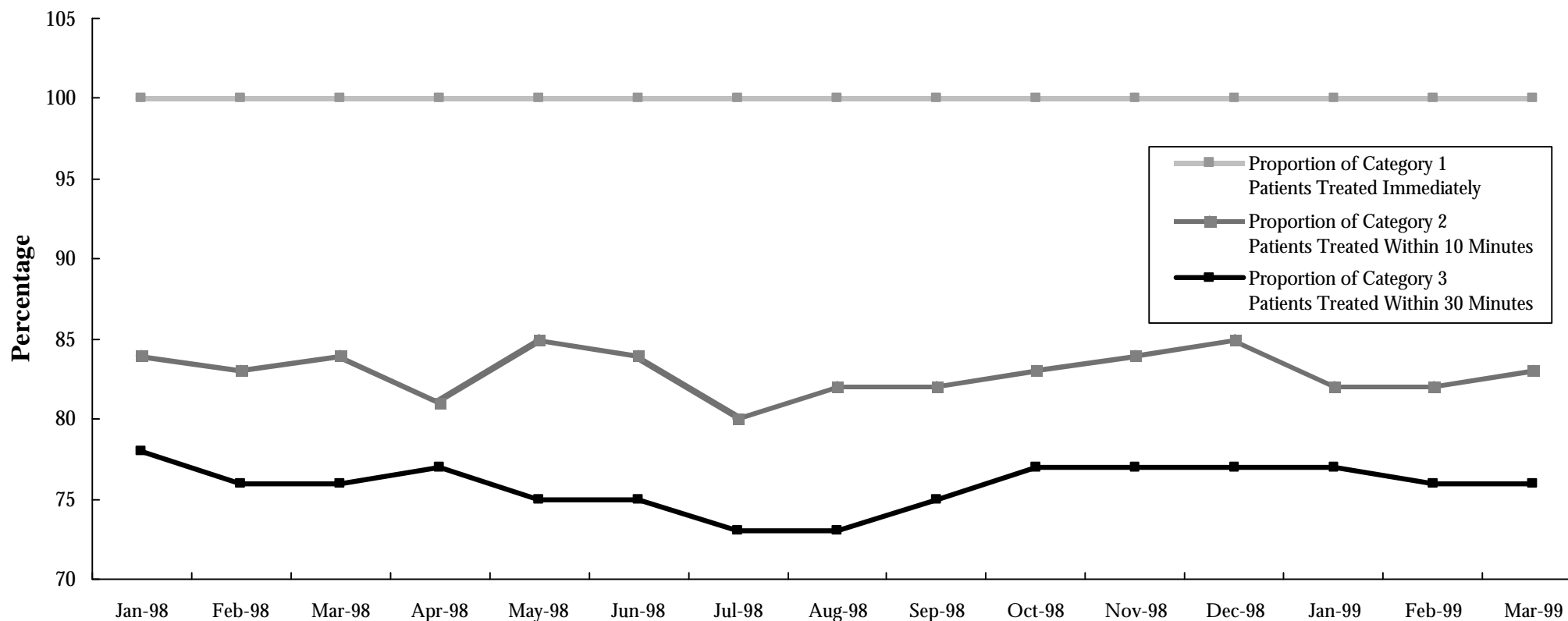
⁴ Barwon Health is formerly known as The Geelong Hospital.

⁵ The Latrobe Regional Hospital closed and the New Latrobe Regional Hospital opened on 1 September 1998.

Source: Victorian Emergency Minimum Dataset

How many emergency department patients are treated within ideal time?

Figure 3.1 Emergency Department Achievement of ACEM Waiting Times by Triage Category^{1,2}



¹ Waiting times are calculated as the time between presentation at the emergency department and commencement of treatment. The following Australasian College for Emergency Medicine (ACEM) patient categories and recommended treatment times are used:

Category 1: Resuscitation case requiring immediate treatment, for example, major trauma, cardiac arrest, unconsciousness, shock.

Category 2: Emergency case requiring treatment within 10 minutes, for example, severe trauma, chest pain, severe pain, severe breathing difficulty.

Category 3: Urgent case requiring treatment within 30 minutes, for example, moderate trauma, infection, breathing difficulty.

² Data only for hospitals participating in the Emergency Services Enhancement Program / Hospital Access Program.

How many emergency department patients are treated within ideal time?

Table 3.3 Patients treated in selected public hospital emergency departments in triage category 1, 2 or 3 by whether treated in ACEM recommended waiting time: March 1999 Quarter^{1 2}

Hospital	Triage Category 1		Triage Category 2		Triage Category 3	
	Total patients	Treated immediately	Total patients	Treated in 10 minutes	Total patients	Treated in 30 minutes
North Western Health Care Network						
Northern Hospital	39	100%	219	85%	1,845	81%
Royal Melbourne Hospital	143	100%	1,195	82%	3,322	83%
Western Hospital	102	100%	586	85%	2,468	84%
Inner and Eastern Health Care Network						
The Alfred	229	100%	813	83%	2,216	86%
The Angliss Health Services	4	100%	108	91%	1,396	84%
Box Hill Hospital	70	100%	367	89%	2,830	75%
Maroondah Hospital	29	100%	243	84%	1,389	83%
Southern Health Care Network						
Dandenong Hospital	219	100%	938	75%	4,200	69%
Monash Medical Centre	144	100%	1,035	77%	4,151	69%
Peninsula Health Care Network						
Frankston Hospital	61	100%	448	86%	3,395	70%

¹ Data only for hospitals participating in the Hospital Access Program.

² Australasian College for Emergency Medicine (ACEM).

Table 3.3 Patients treated in selected public hospital emergency departments in triage category 1, 2 or 3 by whether treated in ACEM recommended waiting time: March 1999 Quarter

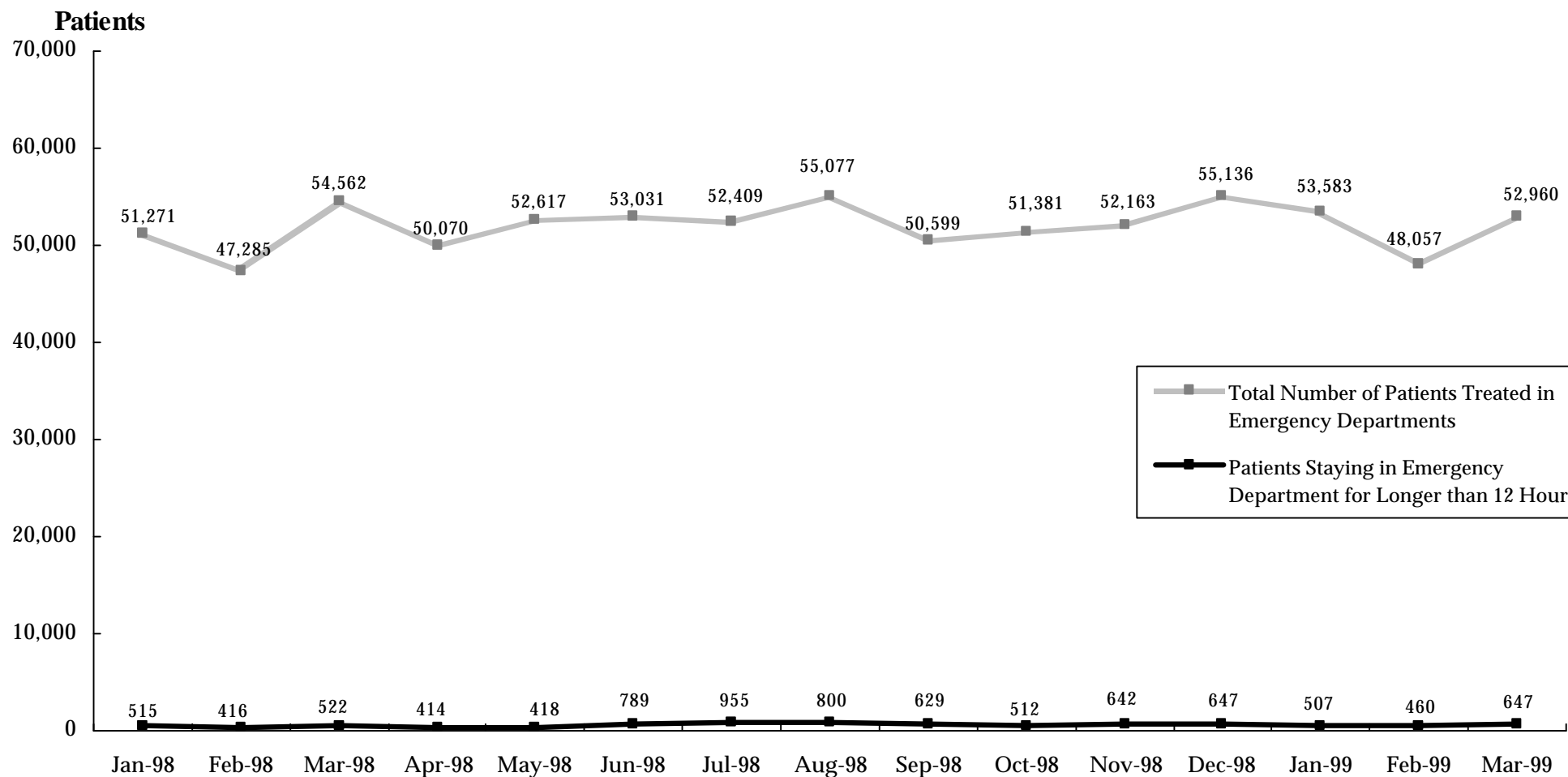
Hospital	Triage Category 1		Triage Category 2		Triage Category 3	
	Total patients	Treated immediately	Total patients	Treated in 10 minutes	Total patients	Treated in 30 minutes
Women's and Children's Health Care Network						
Royal Children's Hospital	19	100%	193	90%	2,469	80%
Metropolitan Non-Network Hospitals						
Austin and Repatriation Medical Centre	98	100%	638	82%	2,672	70%
St Vincent's Hospital	126	100%	446	73%	2,121	71%
Non Metropolitan Hospitals						
Ballarat Health Services	42	100%	172	86%	1,508	79%
Barwon Health ³	82	100%	538	87%	2,615	79%
Bendigo Health Care Group	28	100%	180	86%	1,021	77%
Goulburn Valley Health	23	100%	252	92%	1,614	79%
New Latrobe Regional Hospital	38	100%	395	94%	1,074	87%
Total	1,496	100%	8,766	83%	42,306	77%

³ Barwon Health is formerly known as The Geelong Hospital.

Source: Victorian Emergency Minimum Dataset

How many patients stay for an extended period in the emergency department?

Figure 3.2 Patients Staying in Emergency Departments for Over 12 Hours While Waiting for a Hospital Bed ^{1 2 3}



¹ The period of 'stay' is calculated from the time the patient arrives in the emergency department to the time when the patient leaves the emergency department.

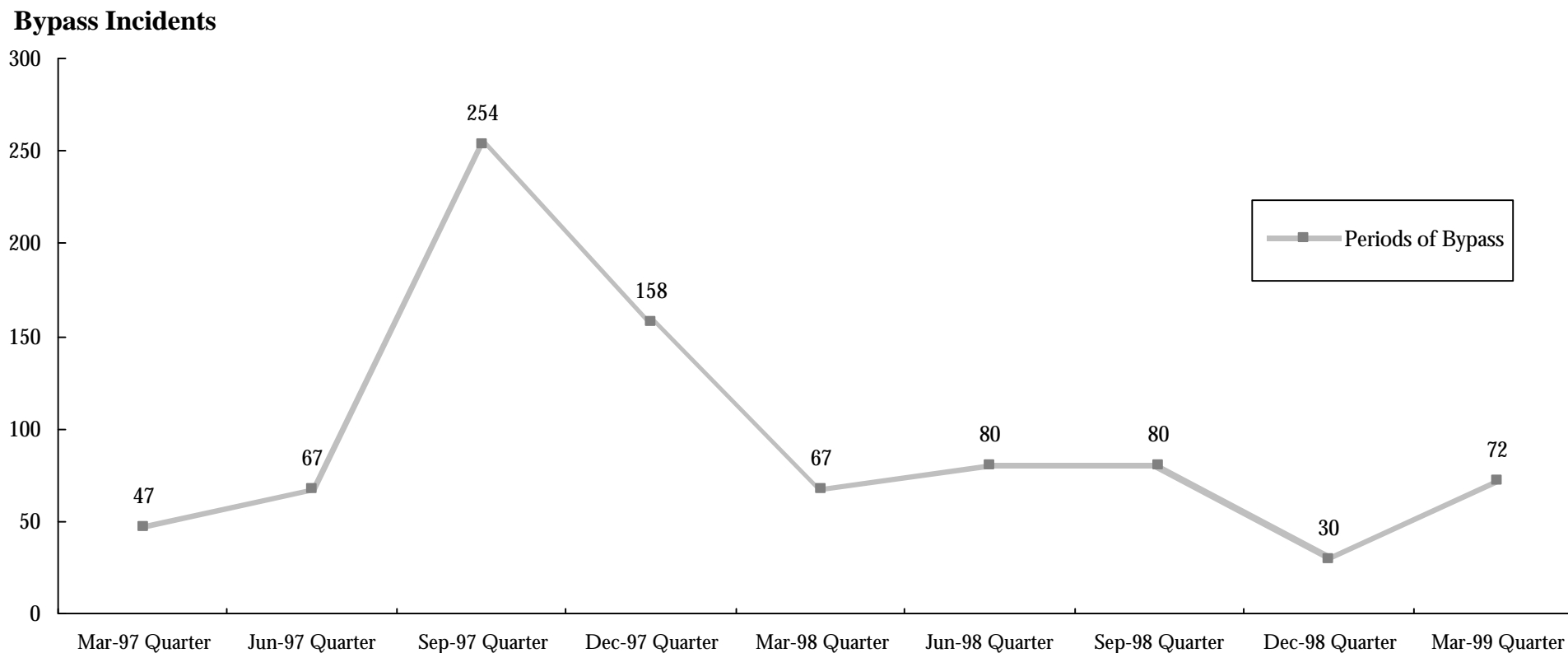
² Data only for hospitals participating in the Emergency Services Enhancement Program / Hospital Access Program.

³ Patients spending over 12 hours in the emergency department, due to being treated in Chest Pain Evaluation Areas, are excluded from these figures.

Source: Victorian Emergency Minimum Dataset.

How often are hospital emergency departments too busy, and consequently go on 'bypass'?

Figure 3.3 Periods of Ambulance Bypass of Public Hospitals^{1 2 3}



¹ Hospital emergency departments are bypassed by ambulances when the emergency department has reached maximum capacity and the treatment of patients already in the emergency department could be significantly compromised by the ambulance arrival of an additional patient requiring emergency treatment. Each individual period of ambulance bypass is for two hours or less.

² Data only for hospitals participating in the Emergency Services Enhancement Program / Hospital Access Program.

³ Metropolitan Ambulance Service (MAS) response times are now being reported in MAS Response Report: A Quarterly Statistical Review of MAS, Melbourne. The 1st Issue (Feb 1998) of the Response Report reported on MAS response times for the December 1997 quarter. Copies of the Response Report can be obtained from MAS, Corporate Planning and Corporate Communications Unit, phone (03) 9840 3648.

4. Access to Critical Care Services

How many hospital beds are available for patients who need intensive care?

Table 4.1 Average number of public hospital intensive care beds (excluding step-down beds) available and open at 9.00a.m., by month ¹

	Jan-98	Feb-98	Mar-98	Apr-98	May-98	Jun-98	Jul-98	Aug-98	Sep-98	Oct-98	Nov-98	Dec-98	Jan-99	Feb-99	Mar-99
Available ²	10.0	7.8	4.8	5.9	5.5	3.0	2.4	5.3	9.2	7.3	2.6	6.2	11.8	9.8	6.0
Total Open ³	81.3	85.9	86.5	88.6	89.2	89.6	91.7	91.8	90.4	90.6	93.9	93.5	88.9	92.0	94.0

¹ Based upon hospital census taken at 9.00a.m. daily.

² Available beds are unoccupied beds which are staffed, functional and available to receive new patients.

³ Total open beds are all functioning and staffed beds, regardless of whether they are occupied.

Source: Office of the Coordinator of Emergency and Critical Care Services.

How many hospital beds are available for patients who need coronary care?

Table 4.2 Average number of public hospital coronary care beds (excluding step-down beds) available and open at 9.00a.m., by month ¹

	Jan-98	Feb-98	Mar-98	Apr-98	May-98	Jun-98	Jul-98	Aug-98	Sep-98	Oct-98	Nov-98	Dec-98	Jan-99	Feb-99	Mar-99
Available	12.4	10.4	9.7	7.9	8.7	8.1	9.9	10.4	8.6	9.8	8.4	8.2	10.4	9.5	7.5
Total Open	76.5	78.8	80.3	75.8	76.5	74.8	75.3	75.4	73.4	74.0	73.3	72.3	73.5	74.0	73.0

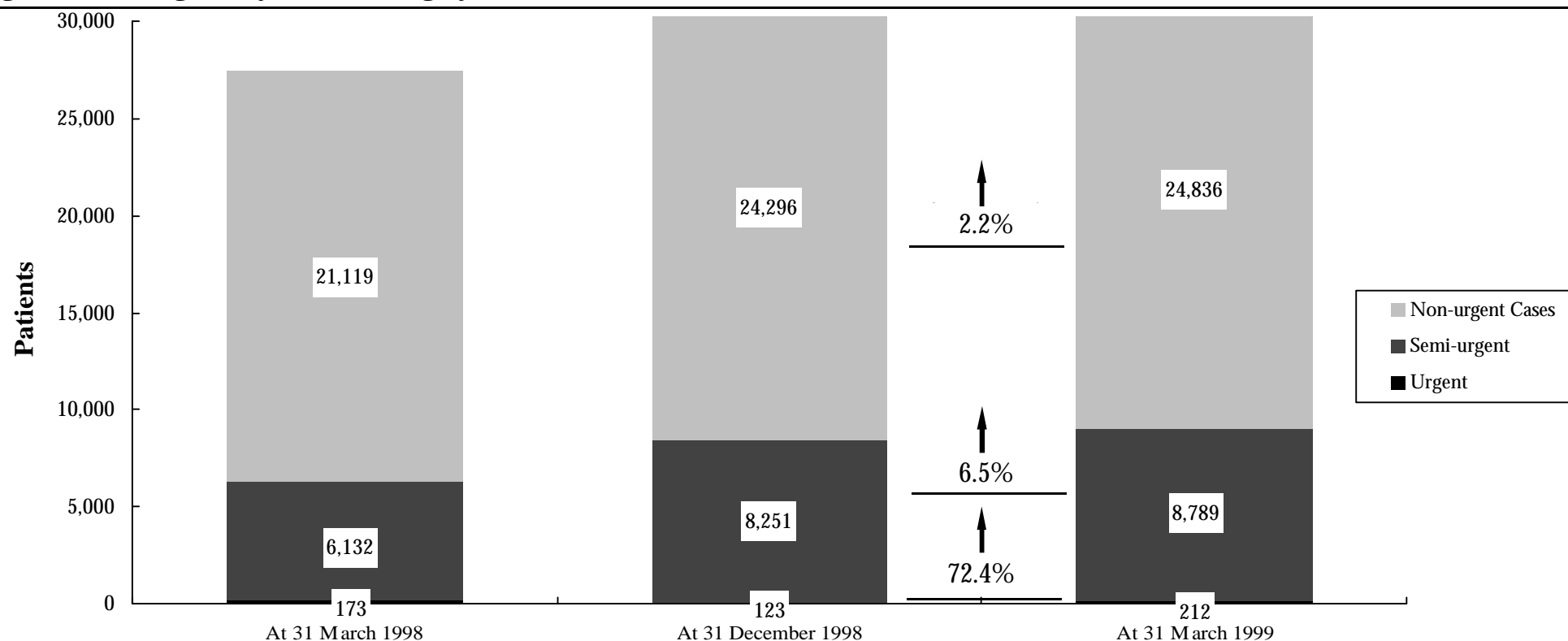
¹ Notes under Table 4.1 apply.

Source: Office of the Coordinator of Emergency and Critical Care Services

5. Access To Elective Surgery

How many people are on hospital waiting lists for elective surgery?

Figure 5.1 Waiting List by Patient Category^{1 2 3 4}



¹ The waiting list patient categories are:

- Urgent cases (waiting list category 1): Admission within 30 days desirable for a condition that has the potential to deteriorate quickly to the point that it may become an emergency.
- Semi-urgent cases (waiting list category 2): Admission within 90 days desirable for a condition causing some pain, dysfunction or disability but which is not likely to deteriorate quickly or become an emergency.
- Non-urgent cases (waiting list category 3): Admission at some time in the future acceptable for a condition causing minimal or no pain, dysfunction or disability which is very unlikely to deteriorate quickly and which does not have the potential to become an emergency.

² Note that for this and subsequent tables, the numbers involved may be small and therefore small absolute changes may result in large percentage changes.

³ Discrepancies between the total number of urgent, semi-urgent and non-urgent cases in Figure 5.1 & Table 5.1 and total waiting in Figure 5.2 & Table 5.2 are due to some hospitals not providing urgency categories for all patients.

⁴ December 1998 quarter waiting list data for Ballarat Health Services have been updated.

Source: Elective Surgery Information System.

How many people are on hospital waiting lists for elective surgery?

Table 5.1 Waiting List by Patient Category, by Individual Hospital ^{1 2 3}

Hospital	Urgent cases			Semi-urgent cases				Non-urgent cases				
	31 Mar 1998	31 Dec 1998	31 Mar 1999	31 Mar 1998	31 Dec 1998	31 Mar 1999	Change % Dec 1998 to Mar 1999	31 Mar 1998	31 Dec 1998	31 Mar 1999	Change % Dec 1998 to Mar 1999	
North Western Health Care Network												
Northern Hospital	13	2	4	264	328	462	41%	1450	2,076	2,192	5.6%	
Royal Melbourne Hospital	42	46	49	385	676	742	10%	1,510	1,935	2,004	3.6%	
Western Hospital	20	18	30	265	310	462	49%	2,144	1,722	1,611	-6.4%	
Sunshine Hospital ⁴	-	-	1	-	-	57	N/A	-	-	309	N/A	
Inner and Eastern Health Care Network												
The Alfred	7	17	7	241	605	802	33%	1,031	1,176	1,341	14.0%	
The Angliss Health Services	1	0	1	22	80	62	-23%	257	254	271	6.7%	
Box Hill Hospital	3	2	16	189	245	312	27%	431	431	557	29.2%	
Maroondah Hospital	13	3	13	133	123	142	15%	1,517	1,395	1,271	-8.9%	
The Royal Victorian Eye and Ear Hospital	1	0	0	1,522	1,830	1,638	-10%	21	4	3	-25.0%	
Southern Health Care Network												
Dandenong Hospital	4	2	7	123	119	122	3%	926	1,092	1,189	8.9%	
Monash Medical Centre	11	5	8	420	522	394	-25%	2,287	2,805	2,612	-6.9%	
Sandringham & District Memorial Hospital	2	0	2	19	25	60	140%	493	726	736	1.4%	
Peninsula Health Care Network												
Frankston Hospital	13	1	2	393	581	496	-15%	1,677	2,073	2,037	-1.7%	

¹ In Victoria, the waiting list is used to coordinate patients who have been recommended for elective surgery but who cannot be booked in for admission to hospital because the demand for elective surgery at that hospital exceeds the resources available at that time.

² Note that for this and subsequent tables, the numbers involved may be small and therefore small absolute changes may result in large percentage changes.

³ Note that ESIS data collection dates are the final day of the month. The previous system measured waiting lists as at the first day of the following month.

⁴ Western Hospital disaggregated and Sunshine Hospital commenced reporting separately from 1 July 1998.

Table 5.1 Waiting List by Patient Category, by Individual Hospital (cont'd)

Hospital	Urgent cases			Semi-urgent cases				Non-urgent cases			
	31 Mar 1998	31 Dec 1998	31 Mar 1999	31 Mar 1998	31 Dec 1998	31 Mar 1999	% Change Dec 1998 to Mar 1999	31 Mar 1998	31 Dec 1998	31 Mar 1999	% Change Dec 1998 to Mar 1999
Women's and Children's Health Care Network											
Royal Children's Hospital	1	1	2	44	55	74	35%	659	880	847	-3.8%
Royal Women's Hospital	3	0	19	188	192	257	34%	334	544	500	-8.1%
Metropolitan Non-Network Hospitals											
Austin and Repatriation Medical Centre	17	15	38	686	649	684	5%	1,487	1,053	1,092	3.7%
St Vincent's Hospital	6	4	5	431	659	754	14%	845	978	1,049	7.3%
Non Metropolitan Hospitals											
Ballarat Health Services ⁵	0	0	4	312	423	452	7%	1,069	1,403	1,567	11.7%
Barwon Health	0	0	0	100	429	350	-18%	902	1,726	1,808	4.8%
Bendigo Health Care Group	13	4	0	119	77	103	34%	890	758	782	3.2%
Goulburn Valley Health	1	0	0	180	105	96	-9%	626	394	303	-23.1%
New Latrobe Regional Hospital ⁶	1	1	1	30	49	46	-6%	226	432	395	-8.6%
Wangaratta District Base Hospital	1	2	3	56	112	192	71%	192	147	134	-8.8%
West Gippsland Hospital	0	0	0	10	57	30	-47%	145	292	226	-22.6%
Total	173	123	212	6,132	8,251	8,789	7%	21,119	24,296	24,836	2.2%

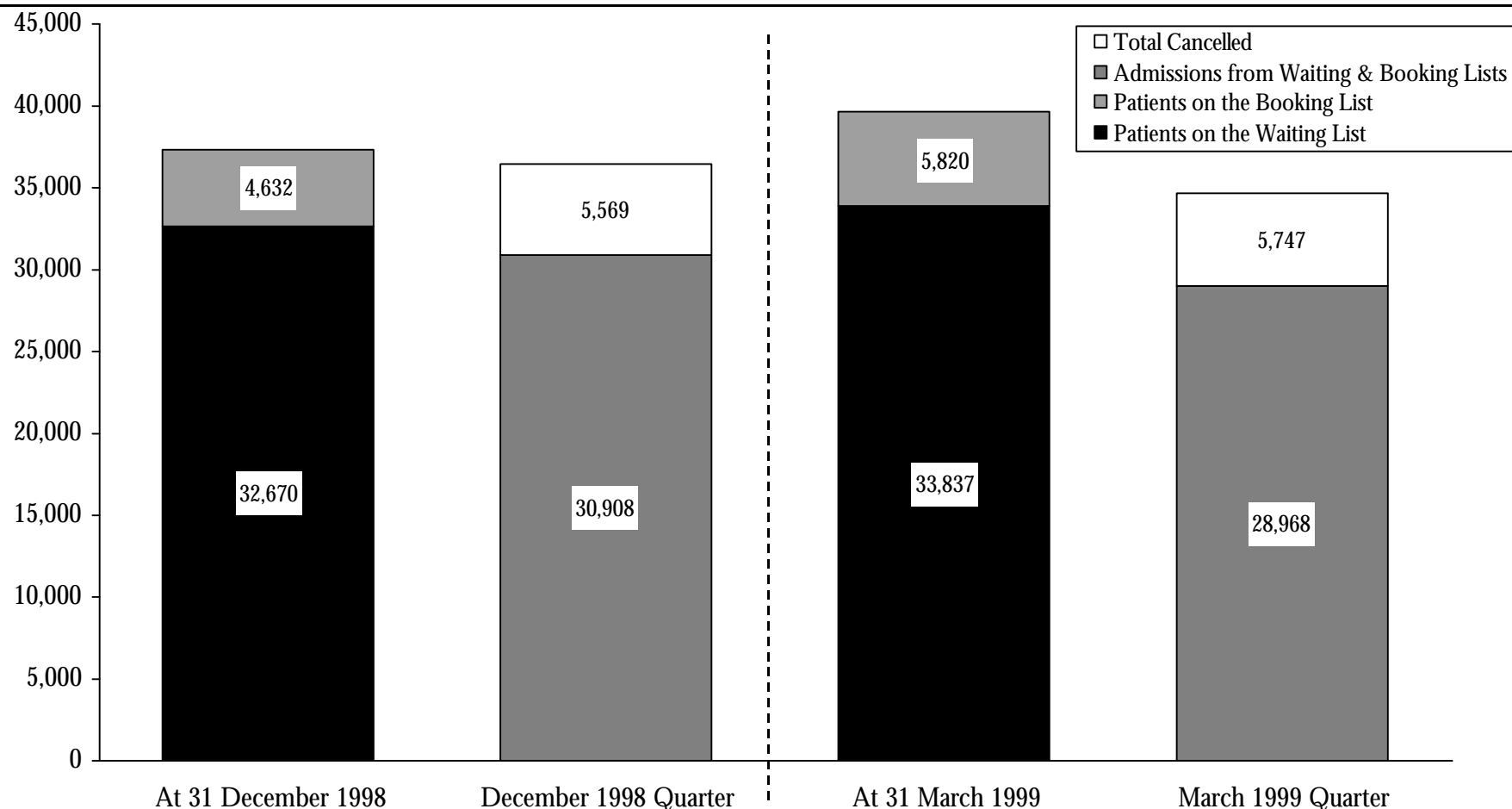
⁵ December data for Ballarat Health Services have been updated.

⁶ The Latrobe Regional Hospital closed and the New Latrobe Regional Hospital opened on 1 September 1998.

Source: Elective Surgery Information System.

What is the throughput of people waiting for elective surgery?

Figure 5.2 Admissions and Cancellations ^{1 2 3}



¹ In Victoria, the waiting list is used to coordinate patients who have been recommended for elective surgery but who cannot be booked in for admission to hospital because the demand for elective surgery at that hospital exceeds the resources available at that time. Patients are considered to be booked when they have been given a planned date within six weeks to be admitted for their elective surgery. Booked patients are separate to waiting list patients.

² December 1998 quarter data for Ballarat Health Services have been updated.

³ March 1999 quarter data for Ballarat Health Services include estimates.

What is the throughput of people waiting for elective surgery?

Table 5.2: Admissions and Cancellations, by Individual Hospital: March 1999 Quarter

Hospital	Patients on the Waiting List at 31 March 1999	Patients on the Booking List at 31 March 1999	Admissions from Waiting List & Booking List Quarter	Patients Cancelled from Waiting & Booking Lists Quarter	Total Permanent Removals from Waiting & Booking During the Quarter
North Western Health Care Network					
Northern Hospital	2,658	231	881	231	1,112
Royal Melbourne Hospital	2,795	285	1,646	423	2,069
Western Hospital	2,103	115	944	356	1,300
Sunshine Hospital ¹	367	19	687	109	796
Inner and Eastern Health Care Network					
The Alfred	2,150	345	1,283	338	1,621
The Angliss Health Services	334	260	564	113	677
Box Hill Hospital	885	239	1,321	174	1,495
Maroondah Hospital	1,426	219	836	228	1,064
The Royal Victorian Eye and Ear Hospital	1,641	479	2,254	213	2,467
Southern Health Care Network					
Dandenong Hospital	1,318	166	911	193	1,104
Monash Medical Centre	3,014	533	2,579	810	3,389
Sandringham & District Memorial Hospital	798	128	606	231	837
Peninsula Health Care Network					
Frankston Hospital	2,535	466	1,432	359	1,791

¹ Western Hospital disaggregated and Sunshine Hospital commenced reporting separately from 1 July 1998.

Table 5.2: Admissions and Cancellations, by Individual Hospital: March 1999 Quarter

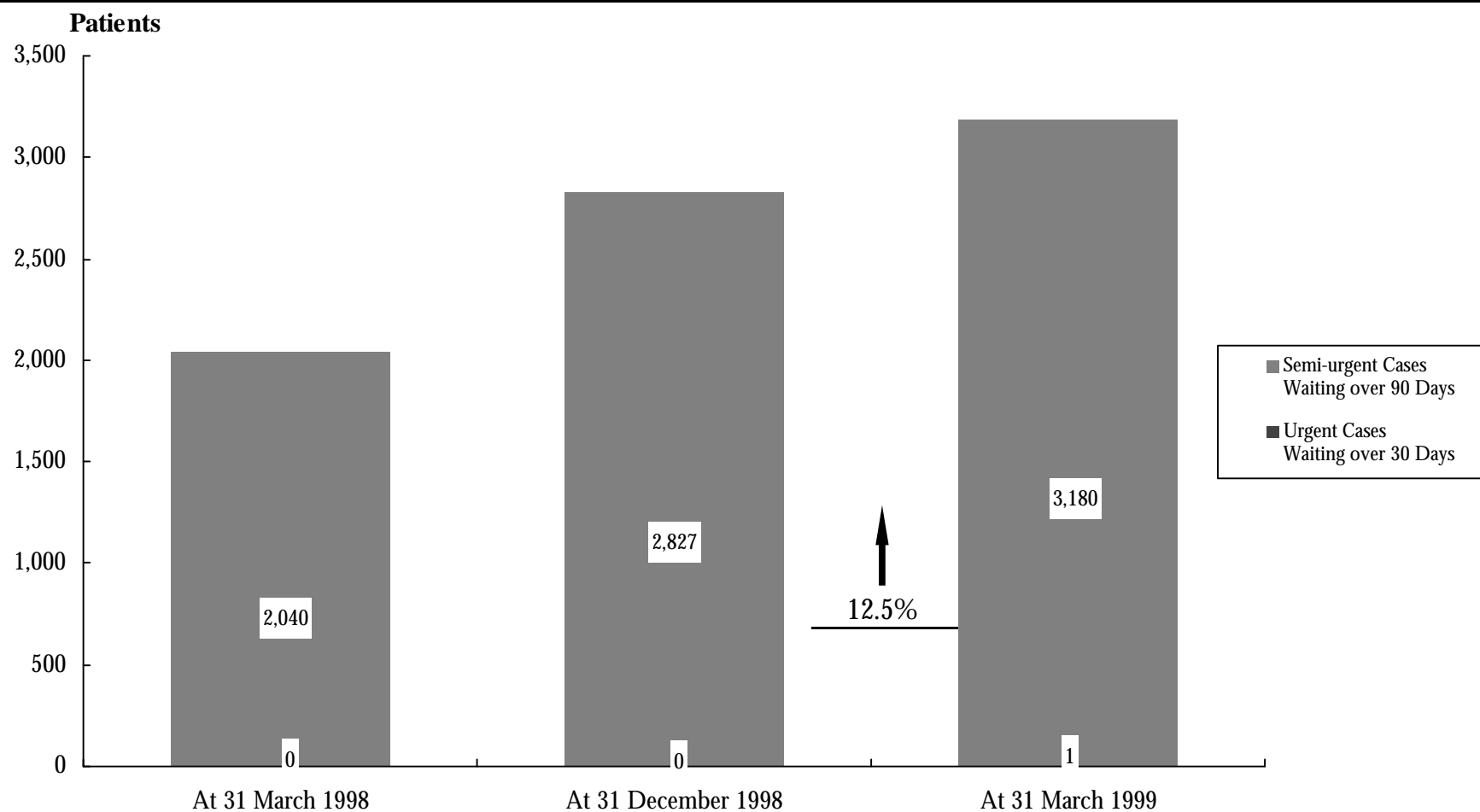
Hospital	Patients on the Waiting List at 31 March 1999	Patients on the Booking List at 31 March 1999	Admissions from Waiting List & Booking List During the	Patients Cancelled from Waiting & Booking Lists During the	Total Permanent Removals from Waiting & Booking During the Quarter
Women's and Children's Health Care Network					
Royal Children's Hospital	923	531	2,389	319	2,708
Royal Women's Hospital	776	352	2,145	286	2,431
Metropolitan Non-Network Hospitals					
Austin and Repatriation Medical Centre	1,814	153	2,095	342	2,437
St Vincent's Hospital	1,808	232	1,168	238	1,406
Non Metropolitan Hospitals					
Ballarat Health Services ²	2,023	115	691	258	949
Barwon Health	2,158	276	983	85	1,068
Bendigo Health Care Group	885	141	718	136	854
Goulburn Valley Health	399	140	645	102	747
New Latrobe Regional Hospital	442	259	1,080	127	1,207
Wangaratta District Base Hospital	329	54	504	35	539
West Gippsland Hospital	256	82	606	41	647
Total	33,837	5,820	28,968	5,747	34,715

² March 1999 data for Ballarat Health Services are based on estimates.

Source: Elective Surgery Information System.

How many people are on hospital waiting lists for longer than the ideal time?

Figure 5.3 Waiting List and Booking List Patients Exceeding Ideal Waiting Times, by Patient Category^{1 2 3 4}



¹ Waiting longer than ideal includes semi-urgent patients waiting over 90 days and urgent patients waiting over 30 days.

² Note that for this and subsequent tables, the numbers involved may be small and therefore small absolute changes may result in large percentage changes.

³ December 1998 quarter data for Ballarat Health Services have been updated.

⁴ March 1999 quarter data are based on an estimate.

How many people are on hospital waiting lists and booking lists for longer than the ideal time?

Table 5.3 People on elective surgery waiting lists and booking lists for longer than ideal time in selected public hospitals by urgency ¹

Hospital	Urgent cases waiting over 30 days				Semi-urgent cases waiting over 90 days			
	31 Mar 1998	31 Dec 1998	31 Mar 1999	% Change Dec 1998 to Mar 1999	31 Mar 1998	31 Dec 1998	31 Mar 1999	% Change Dec 1998 to Mar 1999
North Western Health Care Network								
Northern Hospital	0	0	0	-	40	58	114	96.6%
Royal Melbourne Hospital	0	0	1	N/A	114	300	359	19.7%
Western Hospital	0	0	0	-	70	51	121	137.3%
Sunshine Hospital ¹	-	-	-	N/A	-	-	1	N/A
Inner and Eastern Health Care Network								
The Alfred	0	0	0	-	118	226	370	63.7%
The Angliss Health Services	0	0	0	-	4	1	1	0.0%
Box Hill Hospital	0	0	0	-	6	22	23	4.5%
Maroondah Hospital	0	0	0	-	0	0	0	-
The Royal Victorian Eye and Ear Hospital	0	0	0	-	579	673	819	21.7%
Southern Health Care Network								
Dandenong Hospital	0	0	0	-	0	16	9	-43.8%
Monash Medical Centre	0	0	0	-	202	298	200	-32.9%
Sandringham & District Memorial Hospital	0	0	0	-	2	2	5	150.0%
Peninsula Health Care Network								
Frankston Hospital	0	0	0	-	92	144	125	-13.2%

¹ Western Hospital disaggregated and Sunshine Hospital commenced reporting separately from 1 July 1998.

Table 5.3 People on elective surgery waiting lists and booking lists for longer than ideal time in selected public hospitals by urgency (continued)

Hospital	Urgent cases waiting over 30 days				Semi-urgent cases waiting over 90 days			
	31 Mar 1998	31 Dec 1998	31 Mar 1999	% Change Dec 1998 to Mar 1999	31 Mar 1998	31 Dec 1998	31 Mar 1999	% Change Dec 1998 to Mar 1999
Women's and Children's Health Care Network								
Royal Children's Hospital	0	0	0	-	0	0	0	-
Royal Women's Hospital	0	0	0	-	8	1	14	1300.0%
Metropolitan Non-Network Hospitals								
Austin & Repatriation Medical Centre	0	0	0	-	293	204	228	11.8%
St Vincent's Hospital	0	0	0	-	120	286	346	21.0%
Non Metropolitan Hospitals								
Ballarat Health Services ^{2 3}	0	0	0	-	260	256	253	-1.2%
Barwon Health	0	0	0	-	41	213	150	-29.6%
Bendigo Health Care Group	0	0	0	-	24	28	7	-75.0%
Goulburn Valley Health	0	0	0	-	56	12	0	-100.0%
New Latrobe Regional Hospital ⁴	0	0	0	-	0	0	0	-
Wangaratta District Base Hospital	0	0	0	-	11	35	33	-5.7%
West Gippsland Hospital	0	0	0	-	0	1	2	100.0%
Total	0	0	1	N/A	2,040	2,827	3,180	12.5%

² December 1998 data for Ballarat Health Services have been updated.

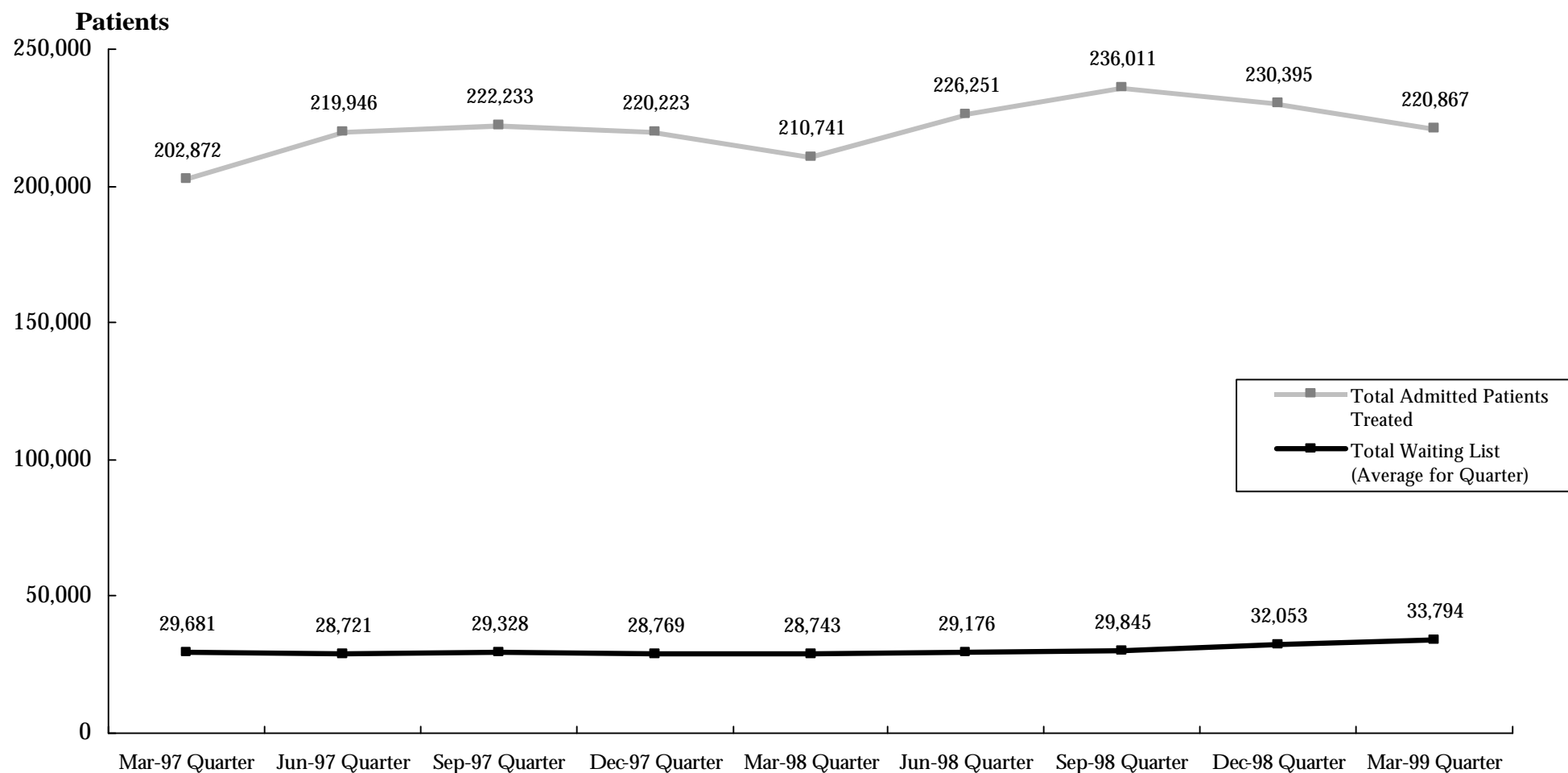
³ March 1999 data for Ballarat Health Services are based on an estimate.

⁴ The Latrobe Regional Hospital closed and the new Latrobe Regional Hospital opened on 1 September 1998.

Source: Elective Surgery Information System.

How does the waiting list compare to the total number of patients treated?

Figure 5.4 Waiting List Compared with Overall Admitted Patient Activity^{1 2 3}



¹ Data in the current quarter for Admitted Patients Treated is provisional.

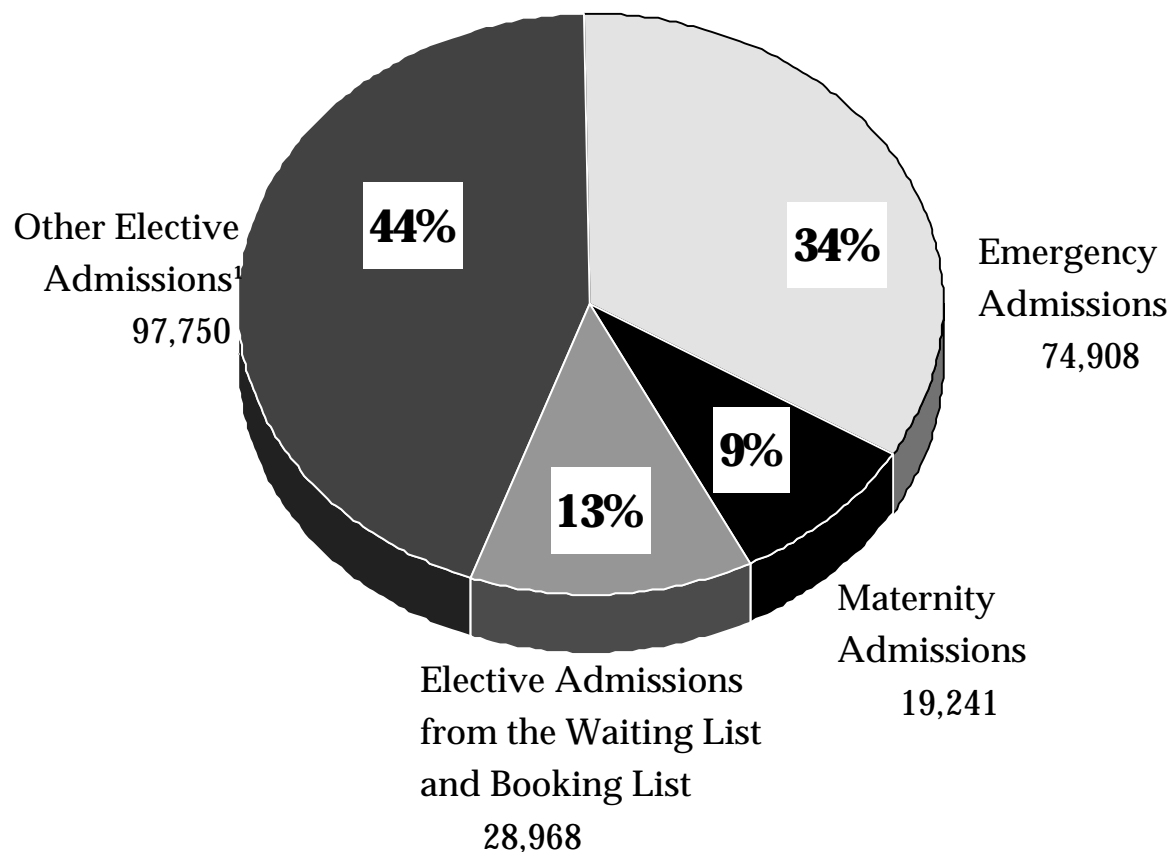
² December quarter 1998 waiting list data have been updated.

³ March quarter 1999 waiting list data include estimates.

Source: Victorian Inpatient Minimum Database (21 September update).
Elective Surgery Information System.

How much of total hospital activity comes from the waiting list and booking list?

Figure 5.5 Separations by Admission Type: March Quarter 1999 ^{2 3 4 5}



¹ Includes statistical admissions, which refer to a change in patient care type.

² Patients on the waiting list who are treated during the quarter: see definition of treated patients given in Figure 3.1.

³ Includes maternity and newborns admissions.

⁴ Percentages may not add due to rounding.

⁵ Elective Admissions data for Ballarat Health Services are based on an estimate.

Source: Victorian Inpatient Minimum Database (21 September update).
Elective Surgery Information System.

How many people are booked for elective surgery?

Table 5.4: Booked Patients at Waiting List Hospitals ^{1 2 3}

	At 31 March 1998	At 31 December 1998	At 31 March 1999	% Change At 31 December 1998 to At 31 March 1999
Booked Patients	6,003	4,632	5,820	25.6%

¹ In Victoria, the waiting list is used to coordinate patients who have been recommended for elective surgery but who cannot be booked in for admission to hospital because the demand for elective surgery at that hospital exceeds the resources available at that time. Patients are considered to be booked when they have been given a planned date within six weeks to be admitted for their elective surgery. Booked patients are separate to waiting list patients.

² The number of patients booked at 31 December 1998 has been revised after inclusion of updated data from Ballarat Health Services.

³ The number of patients booked at 31 March 1999 includes an estimate for Ballarat Health Services.

Note: Patients may be booked immediately at the time that they are referred for elective surgery or they may be booked after having waited on the waiting list. The ability of a hospital to offer bookings depends on a number of factors including (i) the urgency of the patient as determined by the treating surgeon, (ii) the suitability (fitness) of the patient to undergo surgery, and (iii) availability of resources, including appropriately skilled surgical staff, operating theatre facilities, recovery room facilities, and general ward accommodation.

Source: *Elective Surgery Information System*.

6. Glossary

What Do the Terms Used in this Report Mean?

Admitted Patient

Someone who is an inpatient in a hospital. Sameday patients who are admitted for less than 24 hours are also counted as inpatients but people who attend hospital for outpatient clinics are not.

Cancellation

The permanent removal of a waiting list patient from a booking list or waiting list without admission or booking for the awaited procedure

Casemix Funded

A system of funding hospitals according to the actual number and type of services that they provide. Casemix funding was introduced for most Victorian public hospitals in July 1993.

Coronary Care

A hospital unit with specialised staff and equipment to care for patients with heart disease.

Elective Admission

A planned admission to hospital. Emergency admissions and transfers from other hospitals are not counted as elective admissions.

Elective Surgery

Planned surgery that is not an emergency requiring hospital admission within 24 hours.

Emergency Admission

An unplanned admission to hospital due to unexpected illness or injury that requires urgent care.

Emergency Department

A hospital department that specialises in providing emergency care for people who are in need of urgent care (ambulance cases for example) and people who choose to seek treatment in an emergency department.

Health Care Network

A group of community acute hospitals, psychiatric services, tertiary acute hospitals and aged care services in the metropolitan area that is managed by a single board of directors.

Intensive Care

A hospital unit with specialised staff and equipment to provide continuous care for critically ill, injured or post-operative patients.

Non Sameday Patient

In the context of this report, a non sameday patient is an inpatient who leaves hospital on a later date than when they were admitted.

Separation

When an inpatient leaves a hospital. This is the technical way of counting the number of inpatients treated by a hospital.

Step Down Bed

Hospital beds with specialised staff and equipment to care for patients who no longer need coronary or intensive care but are not yet ready to move to a general hospital ward.

Transfer

When an inpatient is moved from one hospital to another. This might be in order to obtain a specialised treatment not available at the first hospital or because of the patient's preferences.

Waiting List Hospital

A major public hospital that performs elective surgery for public patients and uses a waiting list to properly keep track of people who require elective surgery