

Hospital services report

March quarter 2004

Notes

This document contains the most up-to-date information available at the time of preparation.

The *Hospital services report* is available on the Department of Human Services internet site located at:

<http://www.health.vic.gov.au/hsr/index.htm>

Design and production by Department of Human Services, Melbourne, Victoria.

June 2004

© Department of Human Services 2004

This publication is copyright. No part may be reproduced by any process except in accordance with the provisions of the *Copyright Act 1968*.

Contents

Introduction	1
1. Patients waiting for residential aged care placement	3
2. Hospital admitted patient activity	5
3. Access to emergency services	7
4. Access to critical care services	17
5. Access to elective surgery	19
6. Private health insurance	31
7. Glossary	33

This page has been left blank intentionally.

Introduction

Consumers, health care providers and government all need information relating to the quality of health services. Public access to information assists consumers to understand the health care system, assists providers of health services in planning, and increases the accountability of the Department of Human Services to the people in the state of Victoria, Australia.

The *Hospital services report* was introduced in 1995. This edition includes data for the March quarter 2004, which covers the months of January, February and March.

The information included in this report is often requested from the department. Since technical information of this nature is very difficult to interpret, each graph and table needs to be carefully considered in the context of the complexity of the health care system. Department staff, hospital staff, general practitioners and other health care professionals may be able to assist you to interpret this report.

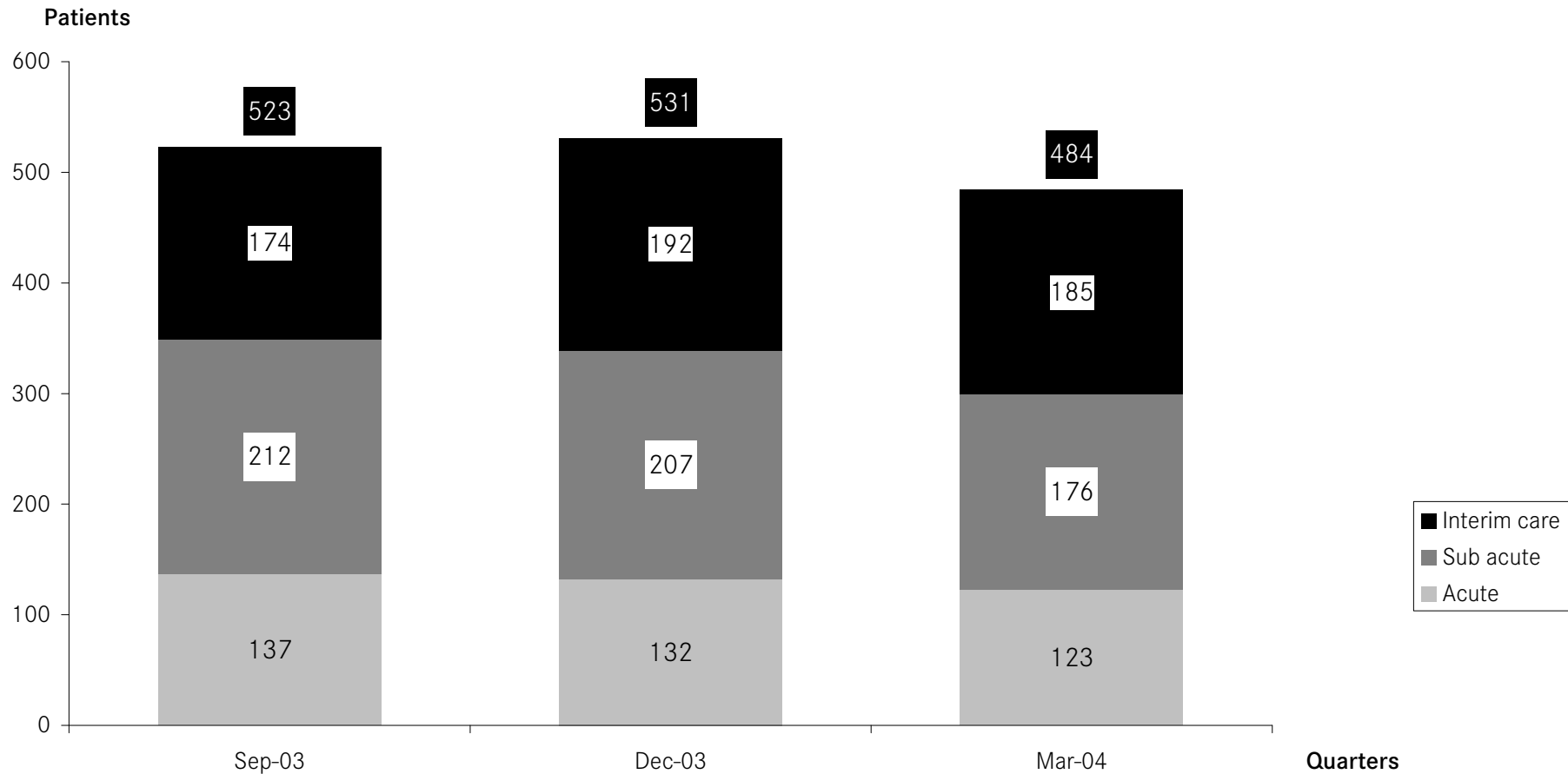
A number of graphs and tables refer to major metropolitan hospitals. A list of the major metropolitan hospitals can be found in the glossary.

This page has been left blank intentionally.

1. Patients waiting for residential aged care placement

How many patients are waiting for residential aged care placements?

Fig 1.1 Number of acute, subacute and interim care patients waiting for residential aged care placement ^{1 2 3 4}



¹ Hospitals reporting sub acute are Angliss, Anne Caudle, Bundoora Extended Care, Bethlehem, Broadmeadows, Caritas Christi, Caulfield General, Dandenong, Goulburn Valley, Grace McKellar, Kingston, Latrobe Regional, Maroondah, Mt Eliza, Melbourne Extended Care Rehabilitation Service, Peter James, Queen Elizabeth Centre, Royal Talbot, St George's, Sunshine and Williamstown.

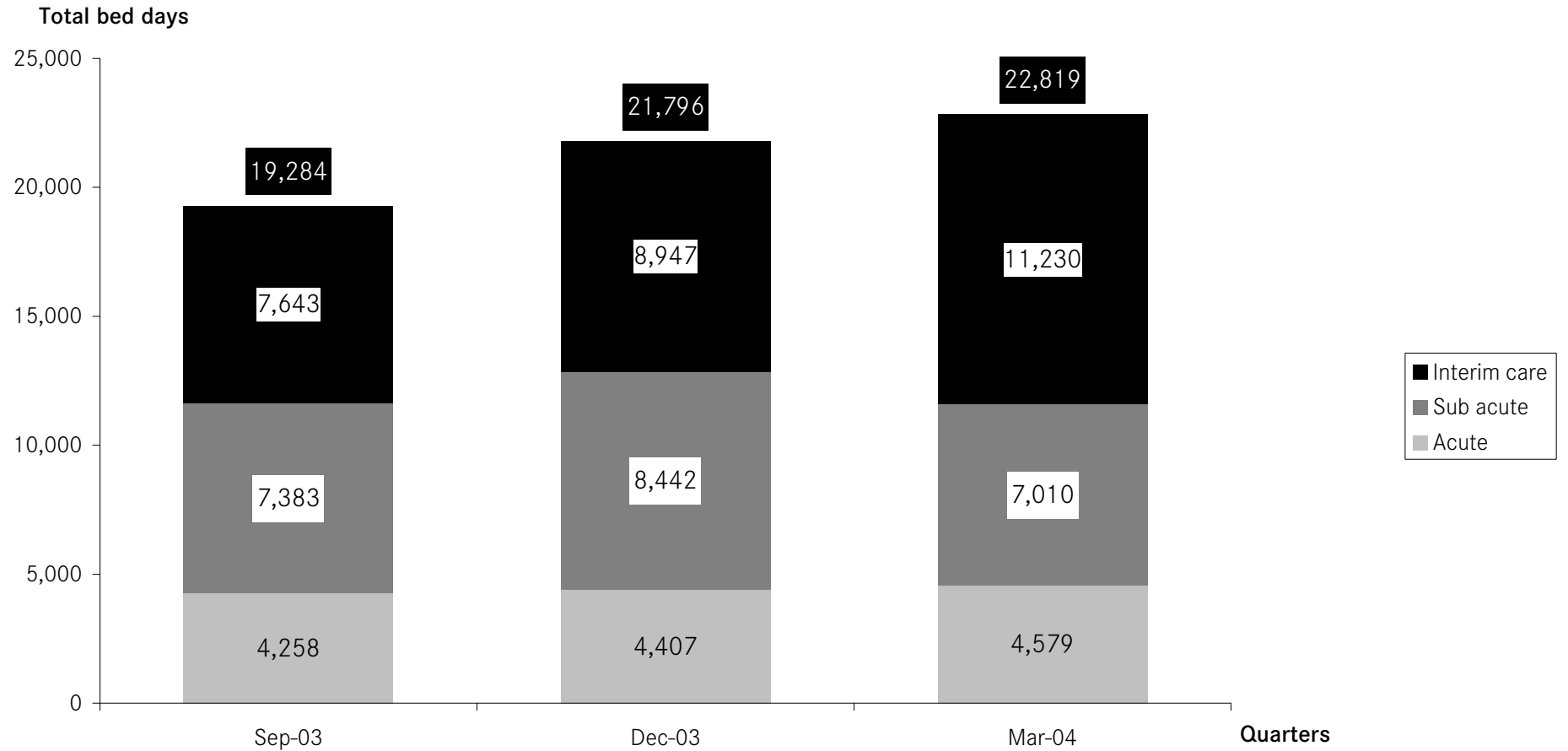
² Hospitals reporting acute are the Alfred, Angliss, Austin Hospital, Ballarat, Barwon Health, Bendigo, Box Hill, Dandenong, Frankston, Goulburn Valley, Latrobe Regional, Maroondah, Monash Medical Centre (Clayton & Moorabbin), The Northern, Rosebud, Royal Melbourne, Sandringham, St Vincent's, Sunshine, Western and Williamstown.

³ Hospitals reporting interim care are Eastern Health, Melbourne Health, Northern Health, Peninsula Health, St Vincent's Health, Southern Health and Western Health.

⁴ Data for March 2004 are provisional.

How many patients are waiting for residential aged care placements?

Fig 1.2 Number of bed days patients wait for residential aged care placement ¹



¹ Notes for figure 1.1 apply.

Source: Department of Human Services bed census.

2. Hospital admitted patient activity

How many patients are admitted to hospital?

Table 2.1 Admitted patients by individual hospital ^{1 2}

Hospital	March quarter 2003	December quarter 2003	March quarter 2004	% change March 2003 to March 2004
Major metropolitan hospitals ³				
Angliss Hospital	5,695	5,799	5,585	-1.9%
Austin Hospital	16,747	18,015	17,231	2.9%
Box Hill Hospital	9,684	10,855	10,218	5.5%
Dandenong Hospital	7,336	7,405	7,193	-1.9%
Frankston Hospital	10,554	11,569	11,321	7.3%
Maroondah Hospital	4,950	5,671	5,445	10.0%
Monash Medical Centre	19,648	21,977	21,540	9.6%
Royal Melbourne Hospital	20,031	21,598	21,034	5.0%
St Vincent's Hospital	10,956	11,504	11,137	1.7%
Sunshine Hospital	6,823	7,221	7,237	6.1%
The Alfred	13,946	12,517	12,570	-9.9%
The Northern Hospital	6,909	7,703	7,530	9.0%
Western Hospital	8,704	9,243	9,208	5.8%
Other metropolitan hospitals				
Caulfield General Medical Centre	494	543	395	-20.0%
Mercy Public Hospital, East Melbourne	4,544	4,898	4,677	2.9%
Peter MacCallum Cancer Institute	4,044	4,619	4,854	20.0%
Royal Children's Hospital	7,060	8,230	7,595	7.6%
Royal Women's Hospital	7,020	7,718	7,521	7.1%
Sandringham & District Memorial Hospital	3,920	4,163	3,996	1.9%
The Royal Victorian Eye & Ear Hospital	2,971	3,376	2,904	-2.3%
Other Metropolitan hospitals	12,551	13,067	12,899	2.8%

¹ Data refer to the number of WIES-fundable separations.

² 2003/2004 data are provisional

³ Major metropolitan hospitals contain the campuses listed in the glossary.

Table 2.1 Admitted patients by individual hospital (continued)

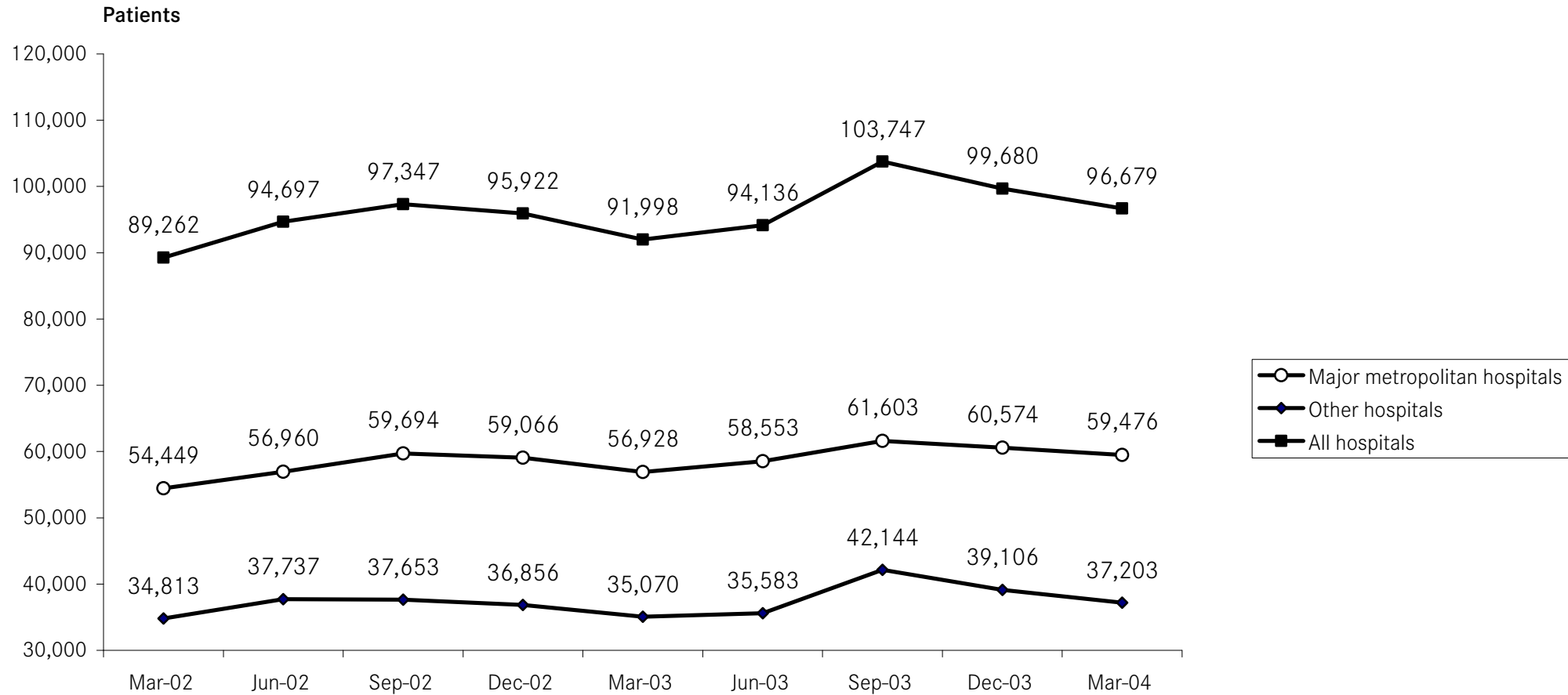
Hospital	March quarter 2003	December quarter 2003	March quarter 2004	% change March 2003 to March 2004
Major regional hospitals				
Ballarat Health Services	5,784	5,999	5,941	2.7%
Barwon Health	13,019	14,657	14,101	8.3%
Bendigo Health Care Group	5,980	6,095	5,912	-1.1%
Goulburn Valley Health	5,087	5,382	5,274	3.7%
Latrobe Regional Hospital	5,317	5,805	5,679	6.8%
Other rural hospitals				
Central Gippsland Health Service	2,515	2,769	2,774	10.3%
Northeast Health Wangaratta	3,127	3,402	3,170	1.4%
South West Healthcare	3,544	3,604	3,610	1.9%
Wimmera Health Care Group	2,142	2,336	2,230	4.1%
Wodonga Regional Health Service	3,871	4,072	4,279	10.5%
Other rural hospitals	35,238	37,201	35,882	1.8%
Grand total	270,211	289,013	280,942	4.0%

Source: Victorian admitted episode dataset (17 May 2004 update).

3. Access to emergency services

How many emergency patients are admitted to hospital?

Fig 3.1 Patients admitted to public hospitals requiring emergency care ^{1 2 3}



¹ Major metropolitan hospitals contain the campuses listed in the glossary.

² Data refer to the number of WIES-fundable separations.

³ 2003/2004 data are provisional.

Source: Victorian admitted episode dataset (17 May 2004 update).

How many emergency patients are admitted to hospital?

Table 3.1 Emergency admissions ^{1 2 3}

Hospital	March quarter 2003	December quarter 2003	March quarter 2004	% change December 2003 to March 2004	% change March 2003 to March 2004
Major metropolitan hospitals					
Angliss Hospital	2,165	2,217	2,089	-5.8%	-3.5%
Austin Hospital	5,211	5,802	5,338	-8.0%	2.4%
Box Hill Hospital	4,776	5,161	5,099	-1.2%	6.8%
Dandenong Hospital	4,731	4,620	4,350	-5.8%	-8.1%
Frankston Hospital	5,629	5,976	5,853	-2.1%	4.0%
Maroondah Hospital	2,895	3,544	3,511	-0.9%	21.3%
Monash Medical Centre	6,195	6,924	6,827	-1.4%	10.2%
Royal Melbourne Hospital	5,683	5,893	6,021	2.2%	5.9%
St Vincent's Hospital	3,652	4,240	4,183	-1.3%	14.5%
Sunshine Hospital	2,913	3,181	3,155	-0.8%	8.3%
The Alfred	4,598	4,360	4,674	7.2%	1.7%
The Northern Hospital	3,662	3,959	3,799	-4.0%	3.7%
Western Hospital	4,818	4,697	4,577	-2.6%	-5.0%
Major hospitals total	56,928	60,574	59,476	-1.8%	4.5%
Other hospitals total	35,070	39,106	37,203	-4.9%	6.1%
Grand total	91,998	99,680	96,679	-3.0%	5.1%

¹ 2003/2004 data are provisional

² Data exclude elective, maternity, newborn and statistical admissions.

³ Data refer to the number of WIES-fundable separations.

Source: Victorian admitted episode dataset (17 May 2004 update).

How many patients are treated in each hospital emergency department?

Table 3.2 Patients treated in hospital emergency departments by Individual Hospitals ^{1 2}

Hospital	March quarter 2003	December quarter 2003	March quarter 2004	% change March 2003 to March 2004
Major metropolitan hospitals				
Angliss Hospital	9,246	9,412	8,794	-4.9%
Austin Hospital	9,638	10,368	9,873	2.4%
Box Hill Hospital	9,218	9,421	9,559	3.7%
Dandenong Hospital	10,966	11,587	11,596	5.7%
Frankston Hospital	11,246	11,244	11,402	1.4%
Maroondah Hospital	8,318	9,154	9,324	12.1%
Monash Medical Centre	12,177	13,211	13,202	8.4%
Royal Melbourne Hospital	11,369	11,606	11,312	-0.5%
St Vincent's Hospital	7,814	7,732	7,380	-5.6%
Sunshine Hospital	13,081	14,345	13,547	3.6%
The Alfred	9,900	9,704	9,962	0.6%
The Northern Hospital	11,963	14,920	15,149	26.6%
Western Hospital	7,988	8,204	8,061	0.9%
Other metropolitan hospitals				
Royal Children's Hospital	11,741	13,134	12,113	3.2%
Major regional hospitals				
Ballarat Health Services	8,727	9,405	8,938	2.4%
Barwon Health	9,853	9,667	9,717	-1.4%
Bendigo Health Care Group	7,424	8,087	8,026	8.1%
Goulburn Valley Health	7,162	7,190	7,397	3.3%
Latrobe Regional Hospital	6,612	6,487	6,106	-7.7%
Grand total	184,443	194,878	191,458	3.8%

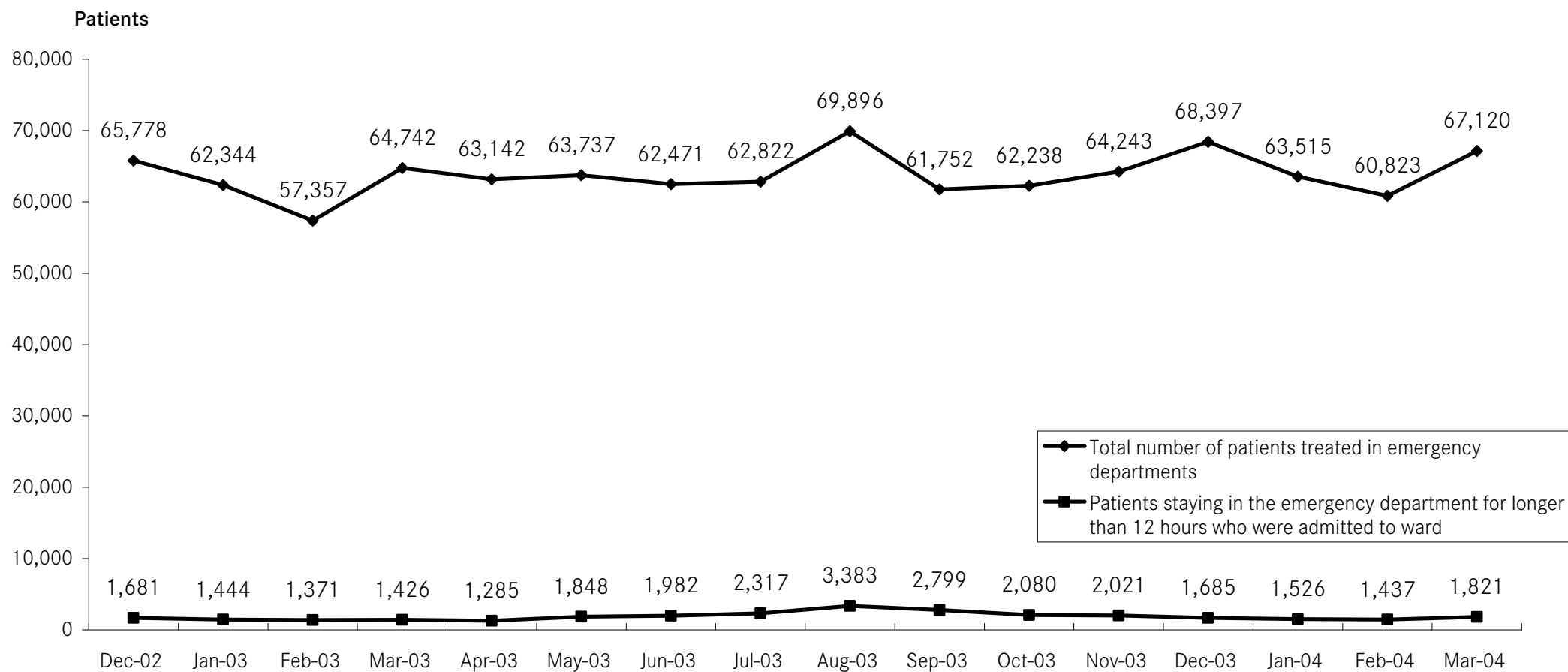
¹ Data include all emergency department patients, that is, they include patients who are subsequently admitted to hospital and patients who are treated in the emergency department without being admitted to hospital.

² 2003/2004 data are provisional

Source: Victorian emergency minimum dataset.

How many patients stay for an extended period in the emergency department?

Fig 3.2 Patients staying in emergency departments for over 12 hours while waiting for a hospital bed ^{1 2}



¹ The period of 'stay' is calculated from the time the patient arrives in the emergency department to the time when the patient leaves the emergency department.

² 2003/2004 data are provisional.

Source: Victorian emergency minimum dataset.

Table 3.3 Patients staying in selected public hospital emergency departments for over 12 hours while waiting for a hospital bed ^{1 2 3}

Hospital	March quarter 2003		December quarter 2003		March quarter 2004	
	Numbers	Percentage	Numbers	Percentage	Numbers	Percentage
Major metropolitan hospitals						
Angliss Hospital	85	7%	158	13%	103	9%
Austin Hospital	129	4%	285	8%	199	6%
Box Hill Hospital	282	10%	381	13%	236	8%
Dandenong Hospital	325	14%	617	25%	491	21%
Frankston Hospital	198	6%	306	9%	472	9%
Maroondah Hospital	257	14%	149	7%	218	11%
Monash Medical Centre	604	20%	899	27%	413	13%
Royal Melbourne Hospital	929	29%	939	27%	794	23%
St Vincent's Hospital	107	5%	58	4%	90	7%
Sunshine Hospital	35	3%	71	5%	55	4%
The Alfred	415	17%	822	36%	781	33%
The Northern Hospital	293	13%	156	6%	111	3%
Western Hospital	193	8%	254	11%	137	6%
Other metropolitan hospitals						
Royal Children's Hospital	13	1%	134	5%	52	2%
Major regional hospitals						
Ballarat Health Services	14	1%	12	1%	21	1%
Barwon Health	190	7%	179	5%	284	8%
Bendigo Health Care Group	120	8%	125	8%	107	7%
Goulburn Valley Health	0	0%	169	15%	200	14%
Latrobe Regional Hospital	52	5%	72	6%	20	2%
Grand total	4,241	10%	5,786	13%	4,784	10%

¹ The period of 'stay' is calculated from the time the patient arrives in the emergency department to the time when the patient leaves the emergency department.

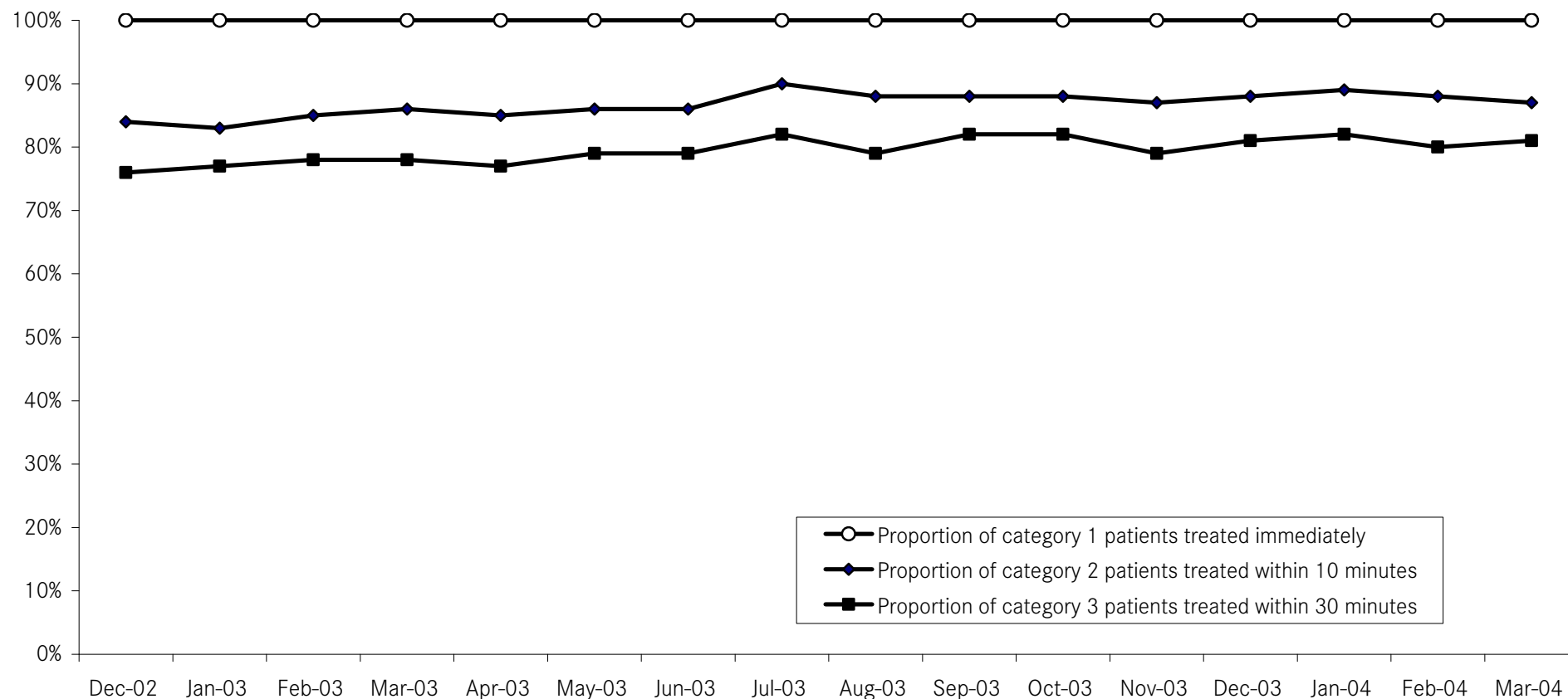
² Data represent the number of emergency department patients admitted to ward who spend more than 12 hours in the emergency department prior to being admitted as a proportion of all emergency patients being admitted to ward.

³ 2003/2004 data are provisional.

Source: Victorian emergency minimum dataset.

How many emergency patients are treated within ideal time?

Fig 3.3 Emergency department achievement of ACEM waiting times by triage category ^{1 2 3}



¹ Waiting times are calculated as the time between presentation at the emergency department and commencement of treatment. The following Australasian College for Emergency Medicine (ACEM) patient categories and recommended treatment times are used:

Category 1: Resuscitation case requiring immediate treatment, for example, major trauma, cardiac arrest, unconsciousness, shock.

Category 2: Emergency case requiring treatment within 10 minutes, for example, severe trauma, chest pain, severe pain, severe breathing difficulty.

Category 3: Urgent case requiring treatment within 30 minutes, for example, moderate trauma, infection, or breathing difficulty.

² The business rule for 'treatment time' changed in July 2002, now taking into account treatment by nurses.

³ 2003/2004 data are provisional.

How many emergency department patients are treated within ideal time?

Table 3.4 Patients treated in selected public hospital emergency departments in triage category 1, 2 or 3 within ACEM recommended waiting times: March quarter 2004 ^{1 2 3}

Hospital	Triage Category 1		Triage Category 2		Triage Category 3	
	Total patients	Treated within recommended time	Total patients	Treated within recommended time	Total patients	Treated within recommended time
Major metropolitan hospitals						
Angliss Hospital	21	100%	444	81%	2,032	77%
Austin Hospital	81	100%	780	88%	3,607	76%
Box Hill Hospital	102	100%	1,042	83%	3,573	64%
Dandenong Hospital	83	100%	1,016	96%	3,068	93%
Frankston Hospital	94	100%	2,782	96%	4,934	83%
Maroondah Hospital	51	100%	588	78%	2,667	74%
Monash Medical Centre	145	100%	1,556	87%	4,354	82%
Royal Melbourne Hospital	294	100%	1,340	78%	3,270	80%
St Vincent's Hospital	107	100%	665	70%	2,839	56%
Sunshine Hospital	26	100%	664	100%	4,031	79%
The Alfred	308	100%	1,255	80%	3,706	82%
The Northern Hospital	73	100%	787	99%	3,356	100%
Western Hospital	118	100%	790	96%	2,609	95%
Other metropolitan hospitals						
Royal Children's Hospital	39	100%	438	88%	3,110	76%
Major regional hospitals						
Ballarat Health Services	53	100%	262	81%	1,649	92%
Barwon Health	59	100%	822	98%	2,571	96%
Bendigo Health Care Group	54	100%	675	79%	2,241	76%
Goulburn Valley Health	30	100%	451	83%	1,777	85%
Latrobe Regional Hospital	34	100%	275	94%	1,449	92%
Grand total	1,772	100%	16,632	88%	56,843	81%

¹ Australian College for Emergency Medicine (ACEM).

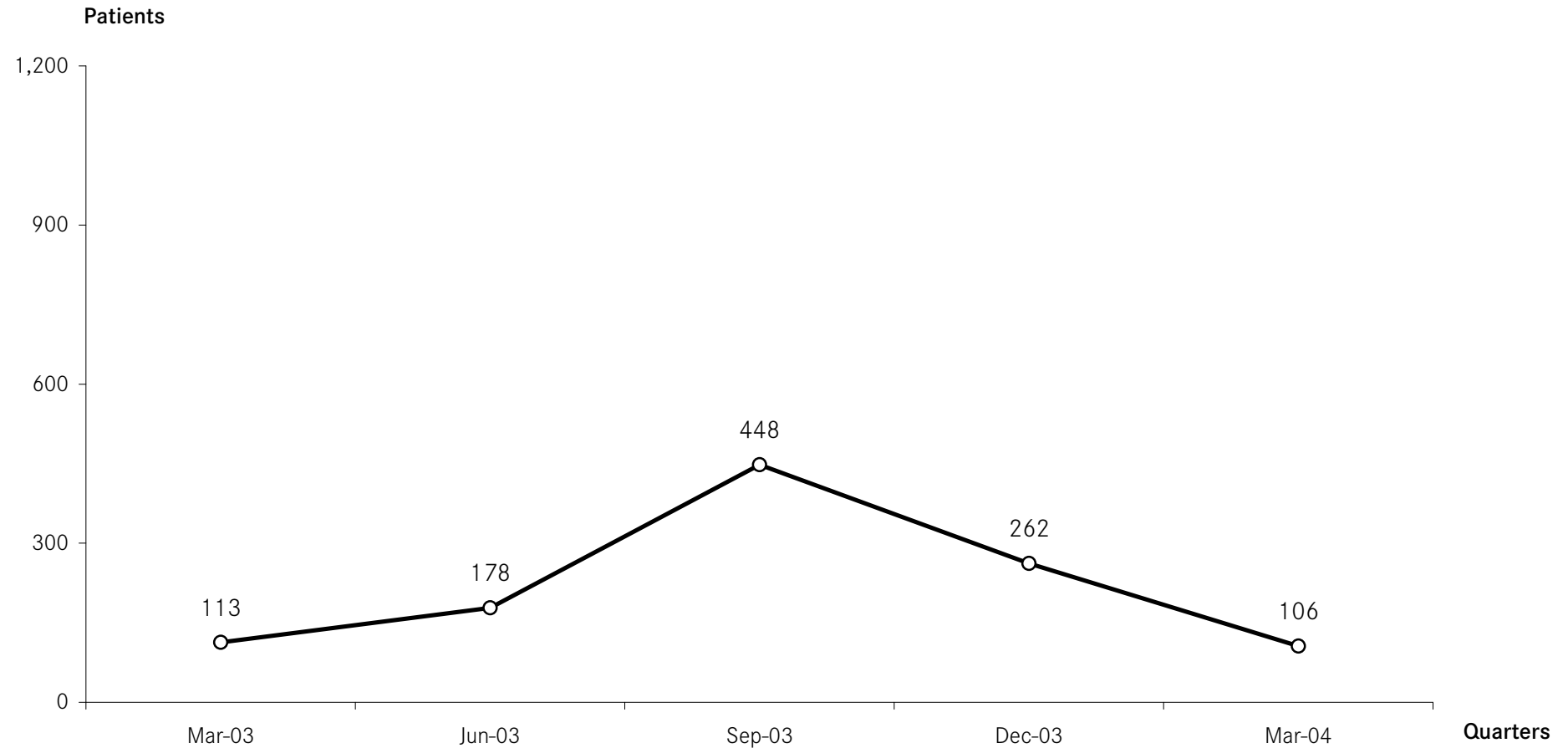
² The business rule for 'treatment time' changed in July 2002/03, now taking into account treatment from nurses.

³ 2003/2004 data are provisional.

Source: Victorian emergency minimum dataset.

How often do hospital emergency departments go on 'bypass'?

Fig 3.4 Periods of ambulance bypass of public hospitals ^{1 2}



¹ Hospital emergency departments can request to go on ambulance bypass when the emergency department has reached maximum capacity and the treatment of patients already in the emergency department could be significantly compromised with the arrival, by ambulance, of further patients. Each individual period of ambulance bypass is for two hours or less.

² Bypass policy allows for critically ill or injured patients to be taken to the nearest hospital emergency department regardless of bypass status.

³ Metropolitan Ambulance Service (MAS) response times are now being reported in the MAS Response Report: A Quarterly Statistical Review of MAS, Melbourne. Copies of the reponse report can be obtained from MAS, Corporate Planning and Corporate Communications Unit, phone (03) 9840 3648.

How often do hospital emergency departments go on bypass?

Table 3.5 Periods of ambulance bypass, by individual hospital ¹²

Hospital	Mar-03 qtr	Jun-03 qtr	Sep-03 qtr	Dec-03 qtr	Mar-04 qtr
Major metropolitan hospitals					
Angliss Hospital	6	9	20	11	3
Austin Hospital	6	11	27	16	5
Box Hill Hospital	8	13	34	25	7
Dandenong Hospital	7	30	78	31	30
Frankston Hospital	14	25	40	35	20
Maroondah Hospital	3	8	18	1	5
Monash Medical Centre	13	23	54	40	3
Royal Melbourne Hospital	30	8	40	35	12
St Vincent's Hospital	0	6	18	13	4
Sunshine Hospital	3	5	20	5	1
The Alfred	2	2	13	28	9
The Northern Hospital	3	11	16	0	0
Western Hospital	18	27	70	22	7
Total	113	178	448	262	106

¹ Hospital emergency departments can request to go on ambulance bypass when the emergency department has reached maximum capacity and the treatment of patients already in the emergency department could be significantly compromised with the arrival by ambulance, of further patients.

² Metropolitan Ambulance Service (MAS) response times are now being reported in the *MAS Response Report: A Quarterly Statistical Review of MAS, Melbourne*. Copies of the response report can be obtained from MAS, Corporate Planning and Corporate Communications Unit, phone (03) 9840 3648.

Source: Metropolitan Ambulance Service.

This page has been left blank intentionally.

4. Access to critical care services

How many hospital beds are available for patients who need intensive care?

Table 4.1 Average number of public hospital intensive care beds available and open at 9:00 a.m., by month ^{1 2}

	Jan-03	Feb-03	Mar-03	Apr-03	May-03	Jun-03	Jul-03	Aug-03	Sep-03	Oct-03	Nov-03	Dec-03	Jan-04	Feb-04	Mar-04
Available ³	5.2	4.7	4.3	4.5	2.3	1.5	2.9	1.7	1.4	3.1	3.0	4.6	5.4	3.5	2.3
Total open ⁴	95.0	103.2	103.1	99.9	107.3	109.6	107.8	106.6	104.6	103.9	104.0	102.3	97.1	105.5	105.3
Available (including Barwon Health)	5.9	5.6	4.9	4.8	2.8	1.9	3.2	2.2	1.9	3.8	3.5	5.0	6.8	4.2	2.8
Total open ICU (incl Barwon Health)	101.4	110.2	110.8	108.1	115.2	117.7	116.5	114.0	112.3	110.2	111.2	110.1	103.3	111.3	111.8
Total open ICU & HDU (incl Barwon Health)	129.0	135.5	138.2	134.9	142.5	141.7	142.0	141.3	139.8	139.1	142.0	140.7	133.6	140.2	144.0

¹ Based upon hospital census taken at 9:00 a.m. daily.

² The data in this table represents an average for each month and varies from table 4.3 which gives averages for the quarter.

³ Available beds are unoccupied beds which are staffed, functional and available to receive new patients.

⁴ Total open beds are all functioning and staffed beds, regardless of whether they are occupied.

Source: Office of the Coordinator of Emergency and Critical Care Services.

How many hospital beds are available for patients who need coronary care?

Table 4.2 Average number of public hospital coronary care beds available and open at 9:00 a.m., by month ¹

	Jan-03	Feb-03	Mar-03	Apr-03	May-03	Jun-03	Jul-03	Aug-03	Sep-03	Oct-03	Nov-03	Dec-03	Jan-04	Feb-04	Mar-04
Available	7.9	8.5	8.4	6.7	5.1	5.6	6.7	4.7	5.0	4.1	4.3	9.0	8.6	7.3	6.2
Total open	70.3	70.9	72.3	70.6	70.3	69.7	70.2	69.6	71.0	70.0	70.2	70.4	69.9	69.4	70.7
Available (including Barwon Health)	8.8	9.3	9.2	7.2	5.5	6.1	7.3	5.2	5.5	4.5	4.6	9.2	8.9	7.4	6.5
Total open ICU (incl Barwon Health)	76.3	76.9	78.3	76.6	76.3	75.7	76.2	75.6	77.0	76.0	76.2	76.4	75.9	75.4	76.7

¹ Notes under Table 4.1 apply.

Source: Office of the Coordinator of Emergency and Critical Care Services.

How many hospital beds are available for patients who need intensive care?

Table 4.3 Average number of public hospital intensive care beds available and open at 9:00 a.m.,
by hospital: March quarter 2004 ¹

Hospital	Available ²	Total open ICU ³	Total open ICU & HDU ³
Major metropolitan hospitals			
Angliss Hospital			
Austin Hospital	11.5	0.2	13.8
Box Hill Hospital	6.2	0.4	9.1
Dandenong Hospital	7.0	0.2	7.0
Frankston Hospital	5.7	0.2	7.9
Maroondah Hospital	3.9	0.7	6.1
Monash Medical Centre	10.9	0.7	10.9
Royal Melbourne Hospital	16.8	0.3	20.7
St Vincent's Hospital	9.2	0.3	9.2
The Alfred	21.5	0.2	27.7
The Northern Hospital	4.7	0.3	7.0
Western Hospital	5.3	0.4	8.2
Other hospitals			
Barwon Health	6.2	0.9	11.7
Total ⁴	108.8	4.6	139.3

¹ Based upon hospital census taken at 9:00 a.m. daily.

² Available beds are unoccupied beds which are staffed, functional and available to receive new patients.

³ Total open beds are all functioning and staffed beds, regardless of whether they are occupied.

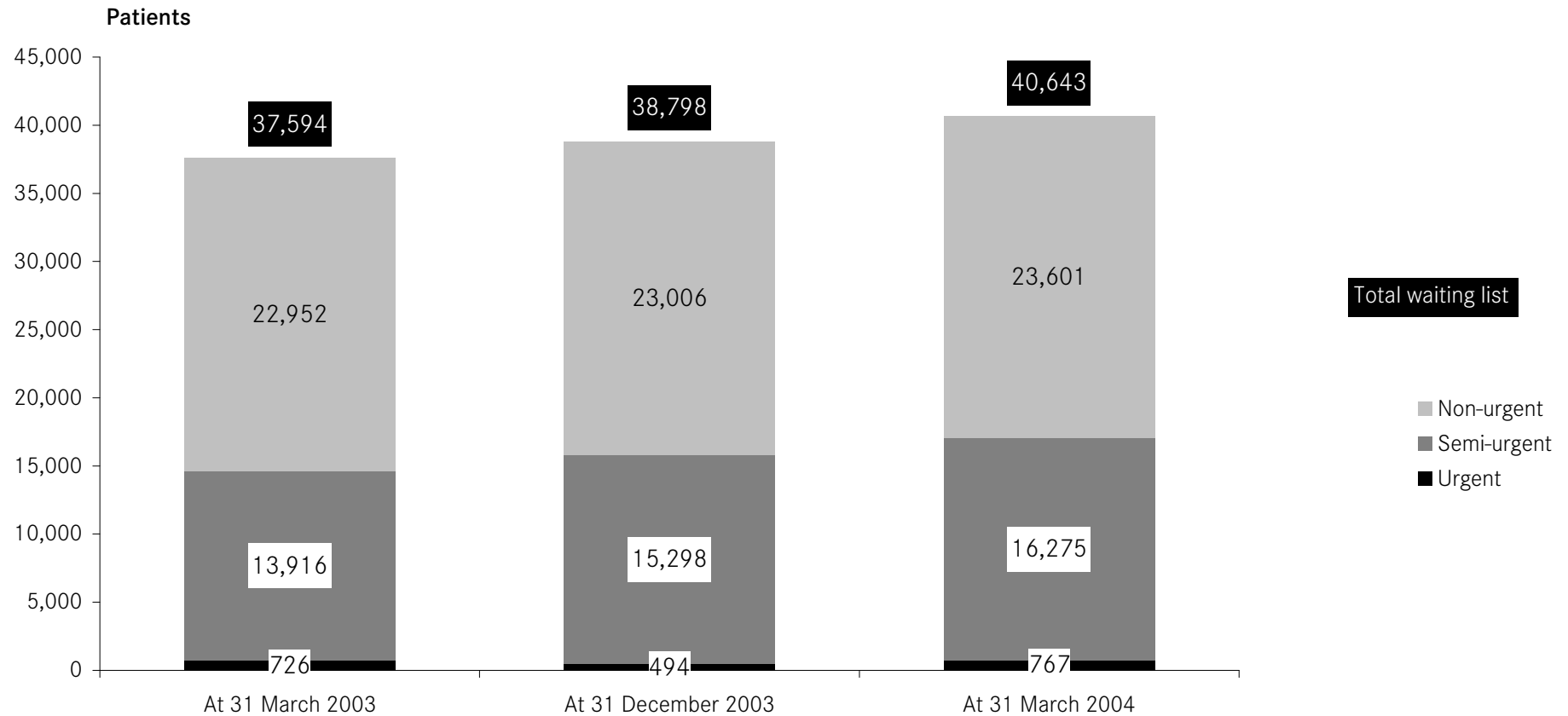
⁴ The data in this table represents an average for the quarter and varies from tables 4.1 and 4.2 which are averages for each month.

Source: Office of the Coordinator of Emergency and Critical Care Services

5. Access to elective surgery

How many people are on hospital waiting lists for elective surgery?

Fig 5.1 Waiting list by urgency ^{1 2 3}



¹ Waiting list numbers include all patients booked and waiting for elective surgery, in line with national definitions.

² The waiting list patient categories are:

- Urgent cases (waiting list category 1): Admission within 30 days desirable for a condition that has the potential to deteriorate quickly to the point it may become an emergency.
- Semi-urgent cases (waiting list category 2): Admission within 90 days desirable for a condition causing some pain, dysfunction or disability but which is not likely to deteriorate quickly or become an emergency.
- Non-urgent cases (waiting list category 3): Admission at some time in the future acceptable for a condition causing minimal or no pain, dysfunction or disability which is very unlikely to deteriorate quickly and which does not have the potential to become an emergency.

³ 2003/2004 data are provisional.

Source: Elective surgery information system.

How many people are on hospital waiting lists for elective surgery?

Table 5.1 Waiting lists by urgency, by individual hospital ^{1 2 3}

Hospital	Urgent cases			Semi-urgent cases			Non-urgent cases		
	31 Mar 03	31 Dec 03	31 Mar 04	31 Mar 03	31 Dec 03	31 Mar 04	31 Mar 03	31 Dec 03	31 Mar 04
Major metropolitan hospitals									
Angliss Hospital	20	15	16	188	210	207	121	192	200
Austin Hospital	70	19	36	1,000	1,178	1,410	1,230	1,075	1,139
Box Hill Hospital	47	18	46	675	522	767	864	793	930
Dandenong Hospital	40	16	43	1,219	1,470	1,466	2,063	1,852	1,886
Frankston Hospital	57	57	80	2,015	2,110	2,150	902	705	725
Maroondah Hospital	22	4	21	98	180	271	919	1,193	1,172
Monash Medical Centre	88	103	115	1,285	1,639	1,763	2,493	2,669	2,634
Royal Melbourne Hospital	32	16	37	1,003	1,045	1,002	1,624	1,494	1,499
St Vincent's Hospital	42	28	46	733	887	850	804	722	751
Sunshine Hospital	8	12	8	197	188	212	683	704	772
The Alfred	82	63	72	939	767	860	844	506	453
The Northern Hospital	22	27	29	964	872	890	1,809	1,617	1,516
Western Hospital	35	8	30	660	687	708	787	773	821
Other metropolitan hospitals									
Mercy Public Hospital, East Melbourne	-	9	15	-	84	67	-	194	172
Mercy Public Hospital, Werribee	-	0	0	-	129	170	-	65	116
Royal Children's Hospital	24	11	22	224	251	275	1,416	1,578	1,561
Royal Women's Hospital	6	16	10	155	305	219	155	244	282
Sandringham & District Memorial Hospital	12	10	16	178	155	184	337	224	254
The Royal Victorian Eye & Ear Hospital	19	7	16	385	310	365	1,321	1,560	1,827
Williamstown Hospital	-	3	8	-	282	252	-	435	414

¹ Waiting list numbers include all patients booked and waiting for elective surgery, in line with national definitions.

² 2003/2004 data are provisional

³ Elective surgery data for Mercy Hospitals Inc, East Melbourne; Mercy Hospitals Inc, Werribee; and Williamstown Hospital are only available for 2003/2004. No data were available for FY 2002/2003.

Table 5.1 Waiting lists by urgency, by individual hospital (continued)

Hospital	Urgent cases			Semi-urgent cases			Non-urgent cases		
	31 Mar 03	31 Dec 03	31 Mar 04	31 Mar 03	31 Dec 03	31 Mar 04	31 Mar 03	31 Dec 03	31 Mar 04
Major regional hospitals									
Ballarat Health Services	6	3	2	234	209	241	928	730	708
Barwon Health	11	2	11	679	784	815	1,436	1,323	1,389
Bendigo Health Care Group	32	28	38	408	401	468	669	678	736
Goulburn Valley Health	18	16	23	267	202	231	204	161	119
Latrobe Regional Hospital	16	3	13	164	136	140	508	545	535
Other rural hospitals									
Northeast Health Wangaratta	2	0	3	80	83	82	389	500	551
West Gippsland Healthcare Group	15	0	11	166	212	210	446	474	439
Grand total	726	494	767	13,916	15,298	16,275	22,952	23,006	23,601

Source: Elective surgery information system.

What is the throughput of people waiting for elective surgery?

Table 5.2 Admissions and cancellations, by individual hospital ^{1 2 3 4}

Hospital	Patients on waiting lists			Admissions from waiting lists			Patients cancelled ⁴ from waiting lists		
				During the quarter			During the quarter		
	at 31 Mar 03	at 31 Dec 03	at 31 Mar 04	31 Mar 03	31 Dec 03	31 Mar 04	31 Mar 03	31 Dec 03	31 Mar 04
Major metropolitan hospitals									
Angliss Hospital	329	417	423	727	782	781	75	95	69
Austin Hospital	2,300	2,272	2,585	1,942	1,794	1,645	373	361	301
Box Hill Hospital	1,586	1,333	1,743	1,128	1,215	810	282	223	152
Dandenong Hospital	3,322	3,338	3,395	1,366	1,394	1,423	265	309	268
Frankston Hospital	2,974	2,872	2,955	1,499	1,436	1,320	323	280	301
Maroondah Hospital	1,039	1,377	1,464	752	861	810	211	143	181
Monash Medical Centre	3,866	4,411	4,512	1,910	2,096	1,902	334	351	341
Royal Melbourne Hospital	2,659	2,555	2,538	1,401	1,570	1,585	379	314	393
St Vincent's Hospital	1,579	1,637	1,647	1,024	1,161	1,105	232	133	256
Sunshine Hospital	888	904	992	1,086	1,035	890	106	145	172
The Alfred	1,865	1,336	1,385	1,329	1,403	1,202	453	351	370
The Northern Hospital	2,795	2,516	2,435	1,224	1,498	1,482	180	440	191
Western Hospital	1,482	1,468	1,559	956	940	886	206	225	215
Other metropolitan hospitals									
Mercy Public Hospital, East Melbourne	-	287	254	-	395	390	-	49	54
Mercy Public Hospital, Werribee	-	194	286	-	979	972	-	17	18
Royal Children's Hospital	1,664	1,840	1,858	2,256	2,556	2,307	167	158	139
Royal Women's Hospital	316	565	511	734	718	608	134	132	103
Sandringham & District Memorial Hospital	527	389	454	483	543	508	122	83	125
The Royal Victorian Eye & Ear Hospital	1,725	1,877	2,208	2,553	2,833	2,456	259	249	223
Williamstown Hospital	-	720	674	-	1,127	1,083	-	107	180

¹ Waiting list numbers include all patients booked and waiting for elective surgery, in line with national definitions.

² 2003/2004 data are provisional.

³ Elective surgery data for Mercy Hospitals Inc, East Melbourne; Mercy Hospitals Inc, Werribee; and Williamstown Hospital are only available for 2003/2004. No data were available for FY 2002/2003.

⁴ Patients removed from the waiting list through a process other than admitted for surgery.

Table 5.2 Admissions and cancellations, by individual hospital (continued)

Hospital	Patients on waiting lists			Admissions from waiting lists			Patients cancelled 4 from waiting lists		
	at 31 Mar 03	at 31 Dec 03	at 31 Mar 04	During the quarter			During the quarter		
				31 Mar 03	31 Dec 03	31 Mar 04	31 Mar 03	31 Dec 03	31 Mar 04
Major regional hospitals									
Ballarat Health Services	1,168	942	951	555	635	592	93	164	85
Barwon Health	2,126	2,109	2,215	1,187	1,168	1,084	186	130	268
Bendigo Health Care Group	1,109	1,107	1,242	1,060	1,088	940	134	93	73
Goulburn Valley Health	489	379	373	697	762	705	91	84	87
Latrobe Regional Hospital	688	684	688	802	967	946	71	91	109
Other rural hospitals									
Northeast Health Wangaratta	471	583	636	490	527	494	36	39	54
West Gippsland Healthcare Group	627	686	660	522	597	462	52	43	68
Grand total	37,594	38,798	40,643	27,683	32,080	29,388	4,764	4,809	4,796

Source: Elective surgery information system.

How may people are on hospital waiting lists for longer than the ideal time?

Table 5.3 People on elective surgery waiting lists for longer than ideal time, by Individual Hospital ^{1 2 3}

Hospital	Urgent cases waiting over 30 days			Semi-urgent cases waiting over 90 days		
	31 Mar 03	31 Dec 03	31 Mar 04	31 Mar 03	31 Dec 03	31 Mar 04
Major metropolitan hospitals						
Angliss Hospital	0	0	0	0	4	0
Austin Hospital	0	0	0	395	486	704
Box Hill Hospital	0	0	0	97	135	210
Dandenong Hospital	0	0	0	757	920	1,024
Frankston Hospital	0	0	0	1,288	1,229	1,353
Maroondah Hospital	0	0	0	7	30	42
Monash Medical Centre	0	0	0	665	857	931
Royal Melbourne Hospital	0	0	0	426	530	490
St Vincent's Hospital	0	0	0	273	345	335
Sunshine Hospital	0	0	0	11	40	48
The Alfred	0	0	0	493	270	355
The Northern Hospital	0	0	0	386	292	270
Western Hospital	0	0	0	312	299	312
Other metropolitan hospitals						
Mercy Public Hospital, East Melbourne	-	0	0	-	0	0
Mercy Public Hospital, Werribee	-	0	0	-	40	65
Royal Children's Hospital	0	0	0	0	0	0
Royal Women's Hospital	0	0	0	0	0	0
Sandringham & District Memorial Hospital	0	0	0	19	40	15
The Royal Victorian Eye & Ear Hospital	0	0	0	31	25	25
Williamstown Hospital	-	0	0	-	102	38

¹ Waiting list numbers include all patients booked and waiting for elective surgery, in line with national definitions.

² 2003/2004 data are provisional.

³ Elective surgery data for Mercy Hospitals Inc, East Melbourne; Mercy Hospitals Inc, Werribee; and Williamstown Hospital are only available for 2003/2004. No data were available for FY 2002/2003.

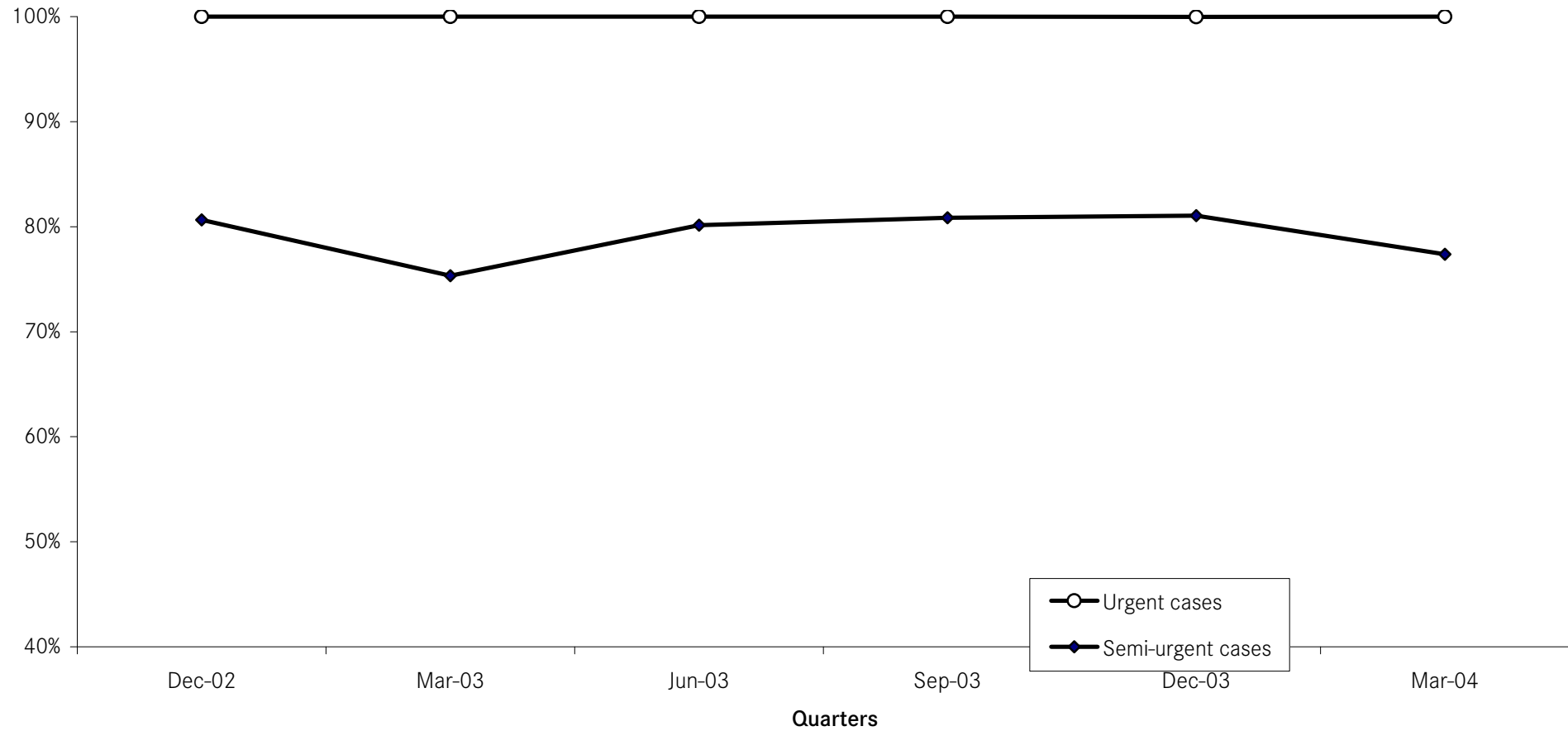
Table 5.3 People on elective surgery waiting lists for longer than ideal time, by individual hospital (continued)

Hospital	Urgent cases waiting over 30 days			Semi-urgent cases waiting over 90 days		
	31 Mar 03	31 Dec 03	31 Mar 04	31 Mar 03	31 Dec 03	31 Mar 04
Major regional hospitals						
Ballarat Health Services	0	0	0	85	71	74
Barwon Health	0	0	0	310	365	406
Bendigo Health Care Group	0	0	0	215	206	229
Goulburn Valley Health	0	0	0	44	22	21
Latrobe Regional Hospital	0	0	0	3	7	0
Other rural hospitals						
Northeast Health Wangaratta	0	0	0	3	8	4
West Gippsland Healthcare Group	0	0	0	36	53	64
Grand total	0	0	0	5,856	6,376	7,015

Source: Elective surgery information system.

What percentage of patients are admitted within clinically ideal times?

Fig 5.2 Percentage of patients from elective surgery waiting lists who were admitted within the ideal time, by urgency ¹



¹ 2003/2004 data are provisional.

Source: Elective surgery information system.

What percentage of patients are admitted within clinically ideal times?

Table 5.4 Percentage of people from elective surgery waiting lists who were admitted within the ideal time, by urgency, by individual hospital ^{1 2}

Hospital	Urgent cases admitted within 30 days during the quarter				Semi-urgent cases admitted within 90 days during the quarter			
	December 2003		March 2004		December 2003		March 2004	
	Numbers	Percentage	Numbers	Percentage	Numbers	Percentage	Numbers	Percentage
Major metropolitan hospitals								
Angliss Hospital	123	100.0%	111	100.0%	378	99.5%	396	99.5%
Austin Hospital	626	100.0%	630	100.0%	485	64.4%	428	59.3%
Box Hill Hospital	330	100.0%	258	100.0%	525	81.4%	287	67.8%
Dandenong Hospital	414	100.0%	324	100.0%	238	62.6%	274	59.1%
Frankston Hospital	337	100.0%	343	100.0%	437	54.3%	380	49.0%
Maroondah Hospital	195	100.0%	215	100.0%	298	83.5%	230	83.0%
Monash Medical Centre	662	100.0%	669	100.0%	712	72.1%	618	69.3%
Royal Melbourne Hospital	728	100.0%	666	100.0%	390	67.9%	369	58.0%
St Vincent's Hospital	314	100.0%	280	100.0%	539	73.4%	447	63.7%
Sunshine Hospital	99	100.0%	86	100.0%	268	87.3%	235	83.3%
The Alfred	545	100.0%	504	100.0%	490	70.8%	395	70.2%
The Northern Hospital	273	100.0%	273	100.0%	564	64.1%	512	63.4%
Western Hospital	203	100.0%	183	100.0%	385	71.4%	303	61.7%
Other metropolitan hospitals								
Mercy Public Hospital, East Melbourne	64	100.0%	83	100.0%	128	97.7%	136	96.5%
Mercy Public Hospital, Werribee	30	100.0%	13	100.0%	588	99.3%	527	99.4%
Royal Children's Hospital	441	100.0%	432	100.0%	622	100.0%	587	100.0%
Royal Women's Hospital	151	100.0%	98	100.0%	421	100.0%	398	100.0%
Sandringham & District Memorial Hospital	95	100.0%	99	100.0%	263	85.7%	258	90.5%
The Royal Victorian Eye & Ear Hospital	179	100.0%	161	100.0%	1,520	97.0%	1,337	95.1%
Williamstown Hospital	98	100.0%	70	100.0%	607	95.3%	601	96.0%

¹ 2003/2004 data are provisional.

² Elective surgery data for Mercy Hospitals Inc, East Melbourne; Mercy Hospitals Inc, Werribee; and Williamstown Hospital are only available for 2003/ 2004. No data were available for FY 2002 / 2003.

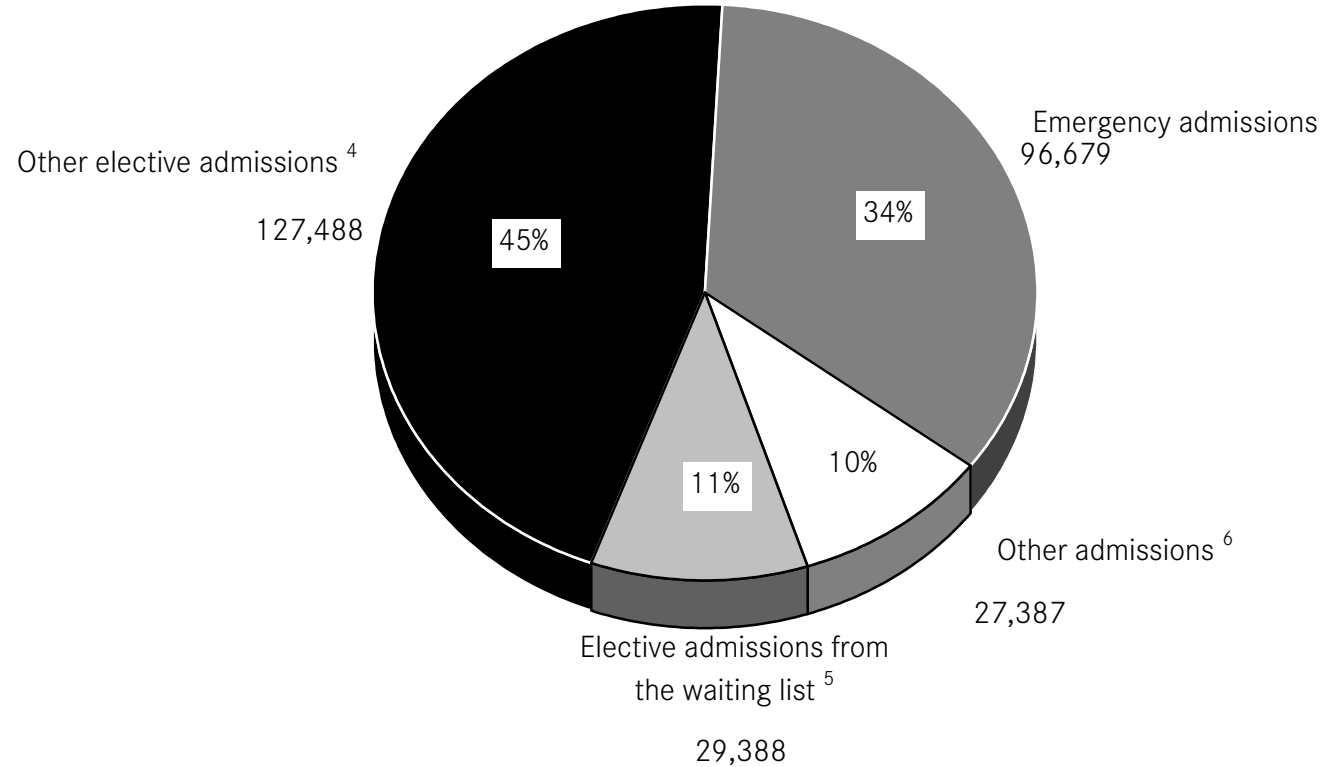
Table 5.4 Percentage of people from elective surgery waiting lists who were admitted within the ideal time, by urgency, by individual hospital (continued)

Hospital	Urgent cases admitted within 30 days during the quarter				Semi-urgent cases admitted within 90 days during the quarter			
	December 2003		March 2004		December 2003		March 2004	
	Numbers	Percentage	Numbers	Percentage	Numbers	Percentage	Numbers	Percentage
Major regional hospitals								
Ballarat Health Services	53	100.0%	60	100.0%	243	89.3%	228	82.0%
Barwon Health	88	100.0%	62	100.0%	521	82.8%	450	72.9%
Bendigo Health Care Group	184	100.0%	191	100.0%	254	72.2%	226	70.0%
Goulburn Valley Health	198	100.0%	194	100.0%	382	88.6%	337	86.6%
Latrobe Regional Hospital	112	100.0%	98	100.0%	314	94.9%	342	98.0%
Other rural hospitals								
Northeast Health Wangaratta	39	100.0%	27	100.0%	218	96.5%	189	93.1%
West Gippsland Healthcare Group	99	99.0%	96	100.0%	246	82.0%	176	80.0%
Grand total	6,680	100.0%	6,226	100.0%	12,036	81.0%	10,666	77.4%

Source: Elective surgery information system.

What is the admission source of total hospital activity?

Fig 5.3 Separations by admission type: March quarter 2003 ^{1 2 3}



¹ Percentages may not add to 100% due to rounding.

² 2003/04 data are provisional

³ Data refer to the number of WIES-fundable separations only.

⁴ Excludes patients admitted from the elective surgery waiting list.

⁵ Patients admitted from the elective surgery waiting list during the quarter (ESIS).

⁶ Includes maternity, newborn and statistical (change in patient care type) admissions.

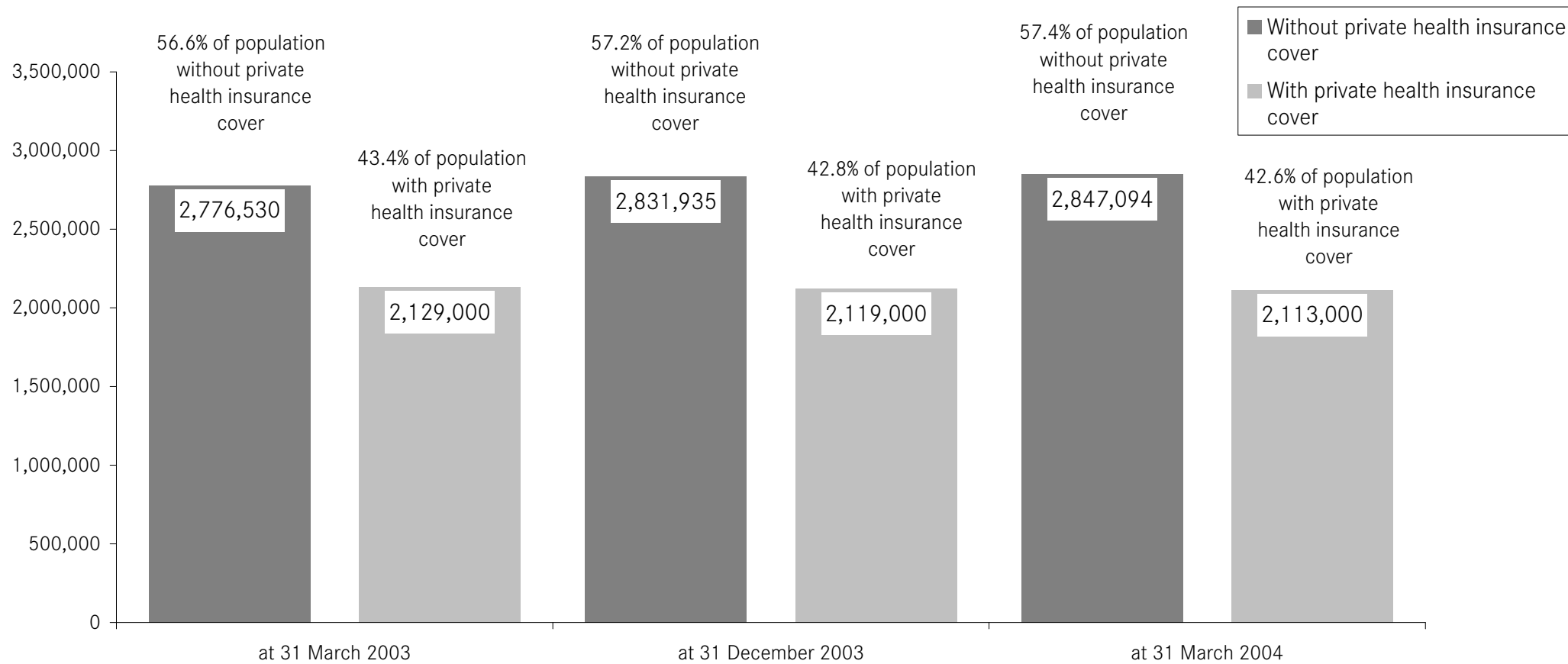
Source: Victorian admitted episode dataset (17 May 2004 update).
Elective surgery information system.

This page has been left blank intentionally.

6. Private health insurance

How many Victorians have private health insurance hospital cover?

Fig 5.1 Health insurance status of Victorians ^{1 2 3}



¹ Data are for all people covered by insurance, that is, contributors, partners and dependants.

² Data for current and previous quarters are provisional.

³ Statistics reflect total persons covered by any level of hospital private health insurance.

This page has been left blank intentionally.

7. Glossary

What do the terms used in this report mean?

Admitted patient

Someone who is an inpatient in a hospital. Sameday patients who are admitted for less than 24 hours are also counted as inpatients but people who attend hospital for outpatient clinics are not.

Cancellation

The request for elective surgery has been withdrawn and the patient is removed from this hospital's Waiting List without admission for the awaited procedure. This can occur for clinical reasons, transfer of the patient to another hospital, or at the request of the patient.

Casemix funded

A system of funding hospitals according to the actual number and type of services that they provide. Casemix funding was introduced for most Victorian public hospitals in July 1993.

Coronary care

A hospital unit with specialised staff and equipment to care for patients with heart disease.

Elective admission

A planned admission to hospital. Emergency admissions and transfers from other hospitals are not counted as elective admissions.

Elective surgery

Planned surgery that is not an emergency requiring hospital admission within 24 hours.

Emergency admission

An unplanned admission to hospital due to unexpected illness or injury that requires urgent care.

Emergency department

A hospital department that specialises in providing emergency care for people who are in need of urgent care (ambulance cases for example) and people who choose to seek treatment in an emergency department.

Intensive care

A hospital unit with specialised staff and equipment to provide continuous care for critically ill, injured or post-operative patients.

Major metropolitan hospitals

Include Angliss Hospital, Austin Hospital (Austin Hospital & Heidelberg Repatriation Hospital), Box Hill Hospital, Dandenong Hospital, Frankston Hospital, Maroondah Hospital, Monash Medical Centre (Clayton Campus & Moorabbin Campus), Royal Melbourne Hospital, St Vincent's Hospital, Sunshine Hospital, The Alfred, The Northern Hospital and Western Hospital.

Separation

When an admitted patient leaves a hospital. This is the technical way of counting the number of admitted patients treated by a hospital.

Step down bed

Hospitals with specialised staff and equipment to care for patients who no longer need coronary or intensive care but are not yet ready to move to a general hospital ward.

Transfer

When an inpatient is moved from one hospital to another. This might be in order to obtain a specialised treatment not available at the first hospital or because of the patient's preferences.

Waiting list hospital

A major public hospital that performs elective surgery for public patients and uses a waiting list to properly keep track of people who require elective surgery.