

# ***Hospital Services Report***

*March Quarter 2000*

## **Notes**

This document contains the most up-to-date information available at the time of preparation.

This *Hospital Services Report* is available on the Department of Human Services Internet site located at:

<http://www.dhs.vic.gov.au/ahs/pub.htm>

Design and production by Department of Human Services, Melbourne, Victoria.

March 2000

© Copyright Department of Human Services 2000.

This publication is copyright. No part may be reproduced by any process except in accordance with the provisions of the *Copyright Act 1968*.

# ***Contents***

<b><i>Introduction</i></b>	<b>1</b>
<b>1. Victorian State Budget - Acute Health Services</b>	<b>3</b>
<b>2. Private Health Insurance - March Quarter 2000</b>	<b>7</b>
<b>3. Hospital Admitted Patient Activity - March Quarter 2000</b>	<b>9</b>
<b>4. Access to Emergency Services - March Quarter 2000</b>	<b>13</b>
<b>5. Access to Critical Care Services - March Quarter 2000</b>	<b>23</b>
<b>6. Access to Elective Surgery - March Quarter 2000</b>	<b>25</b>
<b>7. Glossary</b>	<b>39</b>

# ***Introduction***

Consumers, health care providers and government all need information on the quality of health services. Public access to information assists consumers to understand the health care system, it assists providers of health services in planning and increases the accountability of the Department of Human Services to the people in the state of Victoria, Australia.

The *Hospital Services Report* was introduced in 1995. This edition includes data for the March Quarter 2000, which covers the months of January, February and March, 2000.

This edition includes a special feature covering the key elements of the 2000-2001 State Budget for Acute Health. This information has been taken from the Human Services Budget Information Kit

The information included in this report is often requested from the Department. Since technical information of this nature is very difficult to interpret, each graph and table needs to be carefully considered in the context of the complexity of the health care system. Department staff, hospital staff, general practitioners and other health care professionals may be able to assist you to interpret this report.

## **Admission Block and Ambulance Bypass**

Effective from this edition of the Hospital Services Report, individual hospital data will be published for admission block and ambulance bypass. Previously, only overall performance in these indicators had been published. The new table shows the number of blocked admissions and the proportion of blocked admissions as a percentage of all emergency department admissions for each hospital. The data will assist hospitals to compare their own performance with that of peer hospitals and with the State totals. In addition, data on admissions to ward have been added to Figure 4.2. This will enable comparison between the number of blocked admissions, the number of admissions to ward and the number of emergency department attendances for the State as a whole.

# 1. Victorian State Budget - Acute Health Services

This article provides a summary of the key elements of the 2000-2001 State Budget for Acute Health. This information has been taken from the Human Services Budget Information Kit which are available from Mr Peter Martin on 96168065.

## Introduction

In this budget the Government expands and enhances human services in accordance with the Government's key pillars of policy:

- Improving services for all Victorians
- Restoring democracy
- Growing the whole of Victoria and
- Responsible financial management.

The 2000-01 budget initiatives implement the Government's election commitments and substantially increase the State's investment in the health and social support system. Further funding has also been provided to enable existing programs to meet increasing demand from population growth and other factors.

In aggregate, the Department of Human Services output budget for 2000-2001 is \$7,253 million, an increase of \$576 million (8.6%) over the 1999-2000 Budget (\$6,677 million). This excludes Hospital and Community funded activities of \$302.5 million which are spent directly by those sectors.

## Budget highlights: Acute Health Services

- \$60.2 million in 2000-01 for the Integrated Elective and Emergency Services Strategy to open 360 beds in public hospitals and new initiatives to improve access to emergency care and elective surgery, starting this winter.
- \$23 million this year to improve the quality of hospital services through nurse retention and recruitment strategies (\$6.3 million), hospital cleaning and infection control (\$7.2 million), and hospital to home support (\$9.5 million).

- Changing direction from the previous Government's unsustainable demand that hospitals deliver more services each year with less funds, this budget provides a \$53 million injection of funds to the base operating budgets of acute hospitals.
- A total of \$44 million to increase inpatient activity by 2.2%, \$16 million as part of the Integrated Elective and Emergency Services Strategy and \$28 million from annual growth funds.
- Additional \$22 million for growth in non-inpatient care such as outpatients, sub-acute care and renal dialysis.

## Integrated Elective and Emergency Services Strategy

Significant new funds will be provided under the Integrated Elective and Emergency Service Strategy in the 2000-2001 Budget to enable Victorian public hospitals to reopen public hospital beds and address a range of emergency services pressures in the hospital sector. The strategy is designed to reduce waiting times for hospital emergency services, and reduce pressures on emergency departments. The strategy also aims to reduce waiting times for hospital admission for targeted elective cases and to reduce cancellation of surgery.

A package of initiatives under the strategy will ensure that the additional beds provide optimum service, including care co-ordinators to liaise with service providers, arrange appropriate patient care and prevent unnecessary admission to hospital. Key staff will be provided with immunisation to protect their health and maintain staffing levels.

Funds will enable an additional 360 hospital beds to be reopened.

## Winter Emergency Demand Strategy and Elective Surgery

The Winter Emergency Demand component of the Integrated Elective and Emergency Services Strategy encompasses a number of initiatives, including the re-opening of emergency beds, post-acute care beds, and additional sub-acute beds, as well as increasing funding to emergency departments. This strategy is

designed to enable Victoria's public hospitals to adequately meet the emergency demand pressures expected to be placed on it during winter 2000. The strategy has already commenced operation, with \$26.6 million already committed for six months across the 1999-2000 and 2000-2001 years.

\$60.2 million is committed in total for 2000-2001 for the Integrated Elective and Emergency Services Strategy. After the winter period, resources will be maintained in hospitals and beds may be reallocated to better meet needs for elective surgery.

Funds will also be allocated to improve the way the acute hospital system caters for the needs of patients with chronic illness. Patients who need extended lengths of stay will have access to a better mix of acute, sub-acute and post-acute services as they move through their episode of care.

The number of elective surgery patients from Category 1 (the most urgent) and Category 2 will be closely monitored to ensure that patients most in need receive care within clinically appropriate timeframes.

This initiative will be reviewed annually to ensure that funds can be targeted to particular patients (for example, those experiencing long waits) or specialties, procedures and locations where the greatest health benefits can be achieved for patients, and where timely intervention can prevent emerging demands in the acute health care sector.

Additional funds will be provided in this budget to establish a web site to make information available to patients and doctors on elective surgery waiting lists at different public hospitals.

The improved access to information will allow patients and doctors to make more informed decisions about their treatment and care options. This will provide the opportunity for patients to discuss with their doctors where they might receive treatment sooner than if they went to the hospital nearest their home.

Levels of use and satisfaction with the website will be monitored to ensure patients' and doctors' needs are met.

### **Funding**

Additional funding of \$60.2 million will be provided in 2000-01 to Victorian public hospitals to implement this initiative, including the \$5.5 million allocated for sub-acute care beds as part of the Older Victorians initiative.

The Government's election commitment of \$30 million is almost doubled through the allocation in this Budget, recognising the need to fund hospitals fully for the work they do, and not at the marginal rate.

### **Public Hospital Throughput funding**

Extra recurrent funding will be provided to public hospitals in 2000-2001 to meet the increasing demand for services associated with population growth and ageing, the increased use of new technology, and to redress past under-funding.

The Victorian population is growing at approximately 1% each year and is ageing. Older people have a much higher per capita use of hospitals, and tend to stay in hospital longer because of generally slower recovery and associated illnesses. The per capita use of hospital services is also growing in response to technology-related improvements in treatment, including new technology which enables previously untreated conditions to be treated and may substitute for current treatments (including drugs). Examples include stent procedures for cardiac and gastroenterology operations, and advances in the treatment of premature babies.

Additional funding will help public hospitals to meet and manage the continuing growth in demand for inpatient and outpatient services, 80% of which are now estimated to be emergency or non-discretionary. It will also enable hospitals to continue to invest in the equipment, information technology and management

systems needed to maintain Victoria's benchmark levels of hospital efficiency and to enhance the quality of services.

### **Funding**

In addition to funds allocated to implement the Government's election commitments, further funding totalling \$93.5 million in 2000-01 will be provided to hospitals for growth in inpatient and other services and to ease the financial pressures on hospitals.

This initiative represents a major break from the past when hospitals were asked to provide extra services with less funds. Funding will be provided for two purposes: to enable hospitals to manage demand growth, and to boost the price paid for hospital services.

### **Growth Funding**

First, funding is provided for 2.2% growth in additional inpatient activity to meet changes from the growing and ageing population. A total of \$44 million is provided to treat an extra 20,000 inpatients, \$28 million from growth funds and \$16 million from the extra beds opened under the Integrated Elective and Emergency Services Strategy. The balance of growth funds will provide \$22 million for 70,000 extra non-inpatient services, including hospital outpatients, subacute and renal dialysis services.

### **Funding to Boost Price**

Second, additional funding of \$53 million has been added to the base budget of hospitals by boosting the WIES price, increased sub-acute bedday rates, and extra funding for rural hospitals to maintain financial viability. This more than offsets the annual 1.5% productivity saving of \$33 million for acute health and provides public hospitals with the opportunity to establish a sound financial position after years of budget reductions.

### **New Capital Works 2000-2001 in Acute Health**

#### *Royal Women's Hospital Redevelopment*

A further \$37 million is allocated towards the major redevelopment of the Royal Women's Hospital. This will provide for the redevelopment of the Emergency, Operating and Day Procedures Unit, Birthing Suites and Complex Care and Neonatal Intensive Care Units. Creation of a common imaging area will enable the consolidation of the currently fragmented imaging services to a single location and a number of day services will be co-located into a new Integrated Care Centre.

#### *Frankston Hospital Expansion*

\$12 million of funding for expansion of the Frankston Hospital will provide a new 60 bed general adult ward (including 11 Coronary Care beds). A 16 bed Observation Ward will also be established in the Emergency Department.

#### *Sunshine Hospital Development*

\$8 million is allocated in this budget to complete the Acute Services development at the hospital including the fit out of medical and surgical wards (60 beds), construction of 2 operating theatres and completion of the imaging department. Completion of the Sunshine Hospital Redevelopment will enable a full range of acute services to be delivered to the local community and improve geographical access to acute health services to the outer western metropolitan areas.

### *Austin and Repatriation Medical Centre Redevelopment*

The Government is committed to a major redevelopment of the Austin and Repatriation Medical Centre to provide integrated health services appropriate for future provision of efficient and cost effective health services to the northern community. The redevelopment project will address all hospital and support facilities including operating theatres, emergency, intensive care and wards, and the redevelopment of mental health facilities. Associated research and training facilities will also be redeveloped. It is also intended to co-locate the Mercy Women's Hospital which provides specialist obstetric and gynaecology inpatient facilities. A review of options for the redevelopment is currently being considered by Government and a decision on the proposal including funding is expected shortly.

### *Neonatal Facilities*

This new funding addresses the capital component of a major commitment to improve maternity and neonatal care services in Victoria. The capital funding will total \$2 million and provide for the expansion and upgrading of nurseries at 5 metropolitan, and 1 country site. These sites are The Angliss, Dandenong Hospital, Monash Medical Centre, Ballarat Base Hospital, Werribee Mercy Hospital and Sunshine Hospital. Expenditure of \$0.2 million is expected in 2000-01.

### *Hospital Equipment Upgrades*

Additional funding of \$20 million is allocated in this budget to purchase new and replacement items of major medical and other hospital equipment for public hospitals and reference laboratory equipment across the State in 2000-2001.

### *Hospital Infection Control Program*

\$3 million has been provided in 2000-2001 for a grants scheme that will allocate funds to metropolitan, provincial and rural public hospitals for the purchase of medical and other equipment to ensure compliance with key Australian Standards and Infection Control Guidelines.

## **Rural Health**

### *Kyneton -New Hospital*

\$11 million is provided for the construction of a new facility on a "greenfield" site incorporating 32 acute bed and 20 aged care bed facilities together with provision of new accommodation for the range of allied health and other services. The new hospital will co-locate services, expand access to services and provide a significantly higher standard of facilities.

### *Colac Hospital Redevelopment*

\$13 million is provided in this budget for a major redevelopment of Colac Hospital. The redevelopment will provide for new labour delivery suites, theatres, accident and emergency services and wards. It will also include residential aged community nursing home, dental, allied health, primary health facilities and relocation of the ambulance station.

### *Ballarat Health Service Redevelopment*

Total funding of \$6 million is provided to complete the third and final stage of redevelopment of the Ballarat Base Hospital. This funding will provide for redevelopment of Emergency and Imaging facilities, Intensive Care, Day Surgery, Outpatients, Allied Health and Ancillary Services.

### *Swan Hill District Hospital*

An additional \$1 million is provided for the Swan Hill District Hospital for engineering, external works and infrastructure to consolidate the acute hospital and aged care services.

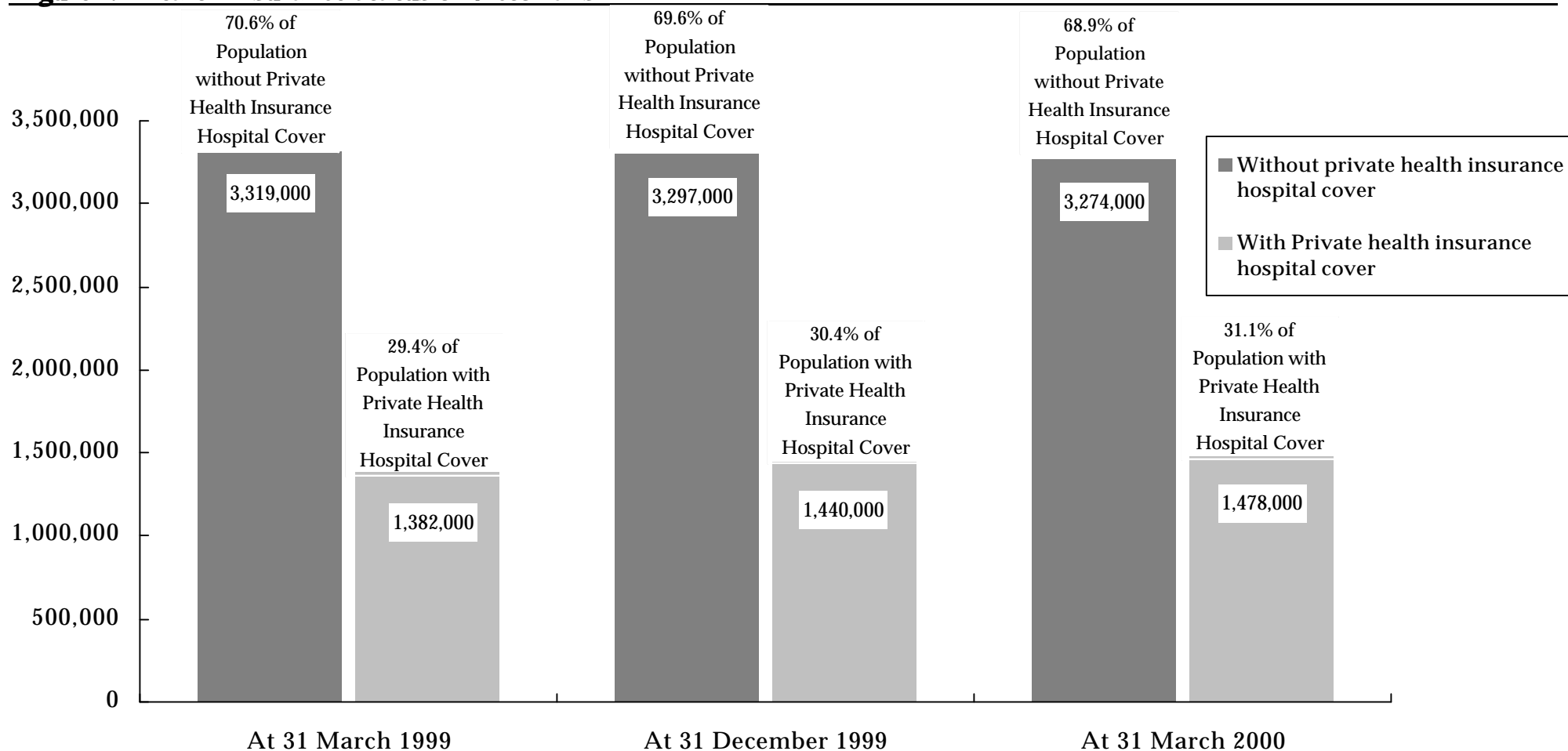
### *Radiotherapy SMU trial*

New radiotherapy facilities are to be established at Bendigo and Ballarat Base Hospitals and Latrobe Regional Hospital. A budget allocation of \$10 million has been provided to enable a radiotherapy facility, including Linac equipment, to be built at Bendigo Base Hospital. This new radiotherapy treatment service will provide the north western Victorian community with significantly improved access to radiotherapy services and reduce the number of people who have to travel to Melbourne for treatment.

## 2. Private Health Insurance

### How many Victorians have private health insurance hospital cover?

**Figure 2.1 Health Insurance Status of Victorians** <sup>1 2 3</sup>



<sup>1</sup> Data are for all people covered by insurance, that is, contributors, partners and dependants.

<sup>2</sup> Data for current and previous quarters are provisional.

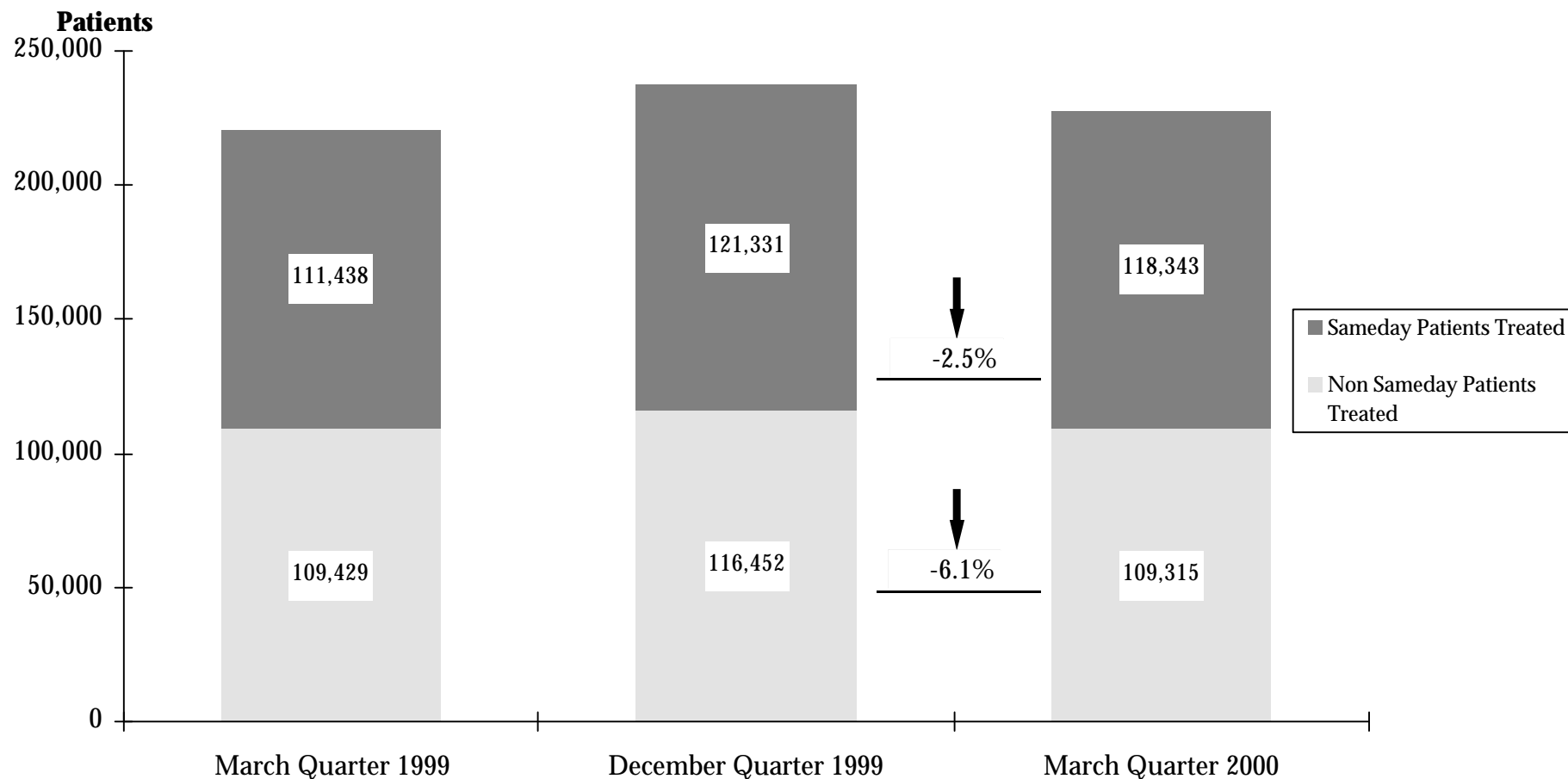
<sup>3</sup> Statistics reflect total persons covered by any level of hospital private health insurance.

Source: Private Health Insurance Administration Council.

### 3. Hospital Admitted Patient Activity

#### How many patients are admitted to hospital?

Figure 3.1 Admitted Patients in Public Hospitals <sup>1 2 3</sup>



<sup>1</sup> Data are for casemix-funded acute public hospital patients. The data refer to the number of “separations” (ie. the number of patients that have been discharged from hospital).

<sup>2</sup> The data are provisional.

<sup>3</sup> “Sameday” patients are admitted and discharged on the same day.

Source: Victorian Admitted Episode Dataset (21 May 2000 update).

# How many patients are admitted to hospital?

**Table 3.1 Admitted Patients by Individual Hospital** <sup>1 2 3</sup>

Hospital	March Quarter 1999		December Quarter 1999		March Quarter 2000		Change (%) December 1999 to March 2000		
	Non Sameday Only	All	Non Sameday Only	All	Non Sameday Only	All	Non Sameday Only	All	
<b>North Western Health Care Network</b>									
Royal Melbourne Hospital	5,435	13,755	5,500	14,581	5,410	14,686	-1.6%	0.7%	
Western Hospital	4,401	7,900	4,855	8,530	4,381	7,931	-9.8%	-7.0%	
The Northern Hospital	3,145	5,246	3,739	5,955	3,589	5,838	-4.0%	-2.0%	
Other North Western Health Care Network Hospitals	2,995	6,993	3,044	7,952	2,798	7,551	-8.1%	-5.0%	
<b>Inner and Eastern Health Care Network</b>									
The Alfred	4,420	10,940	4,921	11,538	4,657	11,188	-5.4%	-3.0%	
The Angliss Health Services	2,319	4,276	2,502	4,846	2,355	4,644	-5.9%	-4.2%	
Box Hill Hospital	4,253	7,754	4,539	8,164	4,448	8,204	-2.0%	0.5%	
Caulfield General Medical Centre	583	1,791	554	1,792	401	1,377	-27.6%	-23.2%	
Maroondah Hospital	1,731	3,328	1,872	3,416	1,857	3,653	-0.8%	6.9%	
Peter MacCallum Cancer Institute	1,219	2,912	1,300	3,153	1,183	3,034	-9.0%	-3.8%	
The Royal Victorian Eye and Ear Hospital	1,371	2,691	1,409	3,026	1,252	2,684	-11.1%	-11.3%	
Other Inner and Eastern Health Care Network Hospitals	156	333	147	378	141	348	-4.1%	-7.9%	
<b>Southern Health Care Network</b>									
Dandenong Hospital	4,320	6,475	4,356	6,534	4,312	6,555	-1.0%	0.3%	
Monash Medical Centre, Clayton	5,803	10,677	6,584	12,265	6,279	11,706	-4.6%	-4.6%	
Sandringham & District Memorial Hospital	1,238	2,592	1,327	2,968	1,186	2,891	-10.6%	-2.6%	
Other Southern Health Care Network Hospitals	1,369	5,637	1,438	5,861	1,341	5,576	-6.7%	-4.9%	
<b>Peninsula Health Care Network</b>									
Frankston Hospital	4,119	8,586	3,980	8,804	4,258	9,043	7.0%	2.7%	
Other Peninsula Health Care Network Hospitals	711	1,100	755	1,083	755	1,088	0.0%	0.5%	

<sup>1</sup> Data relate to acute patients at casemix-funded public hospitals and refer to the number of 'separations' (ie. the number of patients that have been discharged from hospital).

<sup>2</sup> 1999/2000 data are provisional.

<sup>3</sup> Non Sameday patients remain in hospital overnight or longer.

**Table 3.1 Admitted Patients by Individual Hospital (continued)**

Hospital	March Quarter 1999		December Quarter 1999		March Quarter 2000		Change (%) December 1999 to March 2000	
	Non Sameday Only	All	Non Sameday Only	All	Non Sameday Only	All	Non Sameday Only	All
<b>Women's and Children's Health Care Network</b>								
Royal Children's Hospital	3,804	6,547	4,215	7,311	3,669	6,483	-13.0%	-11.3%
Royal Women's Hospital	2,823	7,014	2,852	6,810	2,663	5,878	-6.6%	-13.7%
<b>Other Metropolitan Hospitals</b>								
Austin & Repatriation Medical Centre	5,691	15,723	6,106	16,944	5,529	15,893	-9.4%	-6.2%
Mercy Hospital for Women	2,058	3,498	2,180	3,475	2,155	3,526	-1.1%	1.5%
Royal Talbot Rehabilitation Centre	198	199	237	238	174	175	-26.6%	-26.5%
St Vincent's Hospital	3,647	9,053	4,133	9,905	3,942	10,022	-4.6%	1.2%
Other Metropolitan Non-network Hospitals	1,725	3,871	1,777	4,586	1,773	4,601	-0.2%	0.3%
<b>Non Metropolitan Hospitals</b>								
Ballarat Health Services	2,767	5,279	2,946	5,595	2,797	5,437	-5.1%	-2.8%
Barwon Health	4,863	9,262	5,325	10,434	4,995	9,913	-6.2%	-5.0%
Bendigo Health Care Group	2,565	4,577	2,970	5,319	2,670	4,884	-10.1%	-8.2%
Central Wellington Health Services	1,094	1,961	1,129	2,010	1,108	2,067	-1.9%	2.8%
Goulburn Valley Health	2,339	3,915	2,401	4,341	2,408	4,328	0.3%	-0.3%
New Latrobe Regional Hospital	2,172	4,917	2,115	4,987	1,933	4,512	-8.6%	-9.5%
Wangaratta District Base Hospital	1,498	2,434	1,622	2,696	1,375	2,546	-15.2%	-5.6%
South West Healthcare	1,719	3,029	1,835	3,133	1,747	3,033	-4.8%	-3.2%
Wimmera Health Care Group	985	1,703	1,008	1,876	1,062	1,993	5.4%	6.2%
Wodonga Regional Health Service	1,404	3,125	1,516	3,445	1,506	3,269	-0.7%	-5.1%
Other Non Metropolitan Hospitals	18,489	31,774	19,263	33,832	17,206	31,101	-10.7%	-8.1%
<b>Total All Public Hospitals</b>	<b>109,429</b>	<b>220,867</b>	<b>116,452</b>	<b>237,783</b>	<b>109,315</b>	<b>227,658</b>	<b>-6.1%</b>	<b>-4.3%</b>

Source: Victorian Admitted Episode Dataset (21 May 2000 update).

## 4. Access to Emergency Services

### How many patients are treated in emergency departments?

**Table 4.1: Patients Treated in Selected Public Hospital Emergency Departments** <sup>1 2</sup>

	March Quarter 1999	December Quarter 1999	March Quarter 2000	% Change December 1999 to March 2000
Patients Treated	154,600	159,850	158,714	-0.7%

<sup>1</sup> Data only for hospitals participating in the Emergency Services Enhancement Program / Hospital Access Program. A complete list of these hospitals is given in Table 4.2.

<sup>2</sup> March quarter 2000 data are provisional.

Source: Victorian Emergency Minimum Dataset.

## How many patients are treated in each hospital emergency department?

**Table 4.2 Patients treated in hospital emergency departments, by Individual Hospitals** <sup>1 2</sup>

Hospital	March Quarter 1999	December Quarter 1999	March Quarter 2000	% Change December 1999 to March 2000
<b>North Western Health Care Network</b>				
Northern Hospital	9,177	10,447	10,389	-0.6%
Royal Melbourne Hospital	10,512	11,072	11,317	2.2%
Western Hospital	9,413	9,487	9,365	-1.3%
<b>Inner and Eastern Health Care Network</b>				
The Alfred	9,769	9,243	9,150	-1.0%
The Angliss Health Services	7,024	7,376	7,359	-0.2%
Box Hill Hospital	8,260	8,447	8,358	-1.1%
Maroondah Hospital	7,206	7,278	7,268	-0.1%
<b>Southern Health Care Network</b>				
Dandenong Hospital	9,977	10,024	9,841	-1.8%
Monash Medical Centre	11,817	12,410	11,792	-5.0%
<b>Peninsula Health Care Network</b>				
Frankston Hospital	7,947	8,412	8,948	6.4%
<b>Women's and Children's Health Care Network</b>				
Royal Children's Hospital	11,778	12,579	11,966	-4.9%
<b>Metropolitan Non-Network Hospitals</b>				
Austin and Repatriation Medical Centre	8,576	8,851	8,465	-4.4%
St Vincent's Hospital	6,540	6,582	7,142	8.5%
<b>Non Metropolitan Hospitals</b>				
Ballarat Health Services <sup>3</sup>	7,273	7,458	7,184	-3.7%
Barwon Health <sup>3</sup>	7,566	9,353	9,444	1.0%
Bendigo Health Care Group	9,041	8,227	7,836	-4.8%
Goulburn Valley Health	5,927	5,830	6,335	8.7%
New Latrobe Regional Hospital	6,797	6,774	6,555	-3.2%
<b>Total</b>	<b>154,600</b>	<b>159,850</b>	<b>158,714</b>	<b>-0.7%</b>

<sup>1</sup> Data only for hospitals participating in the Emergency Services Enhancement Program / Hospital Access Program.

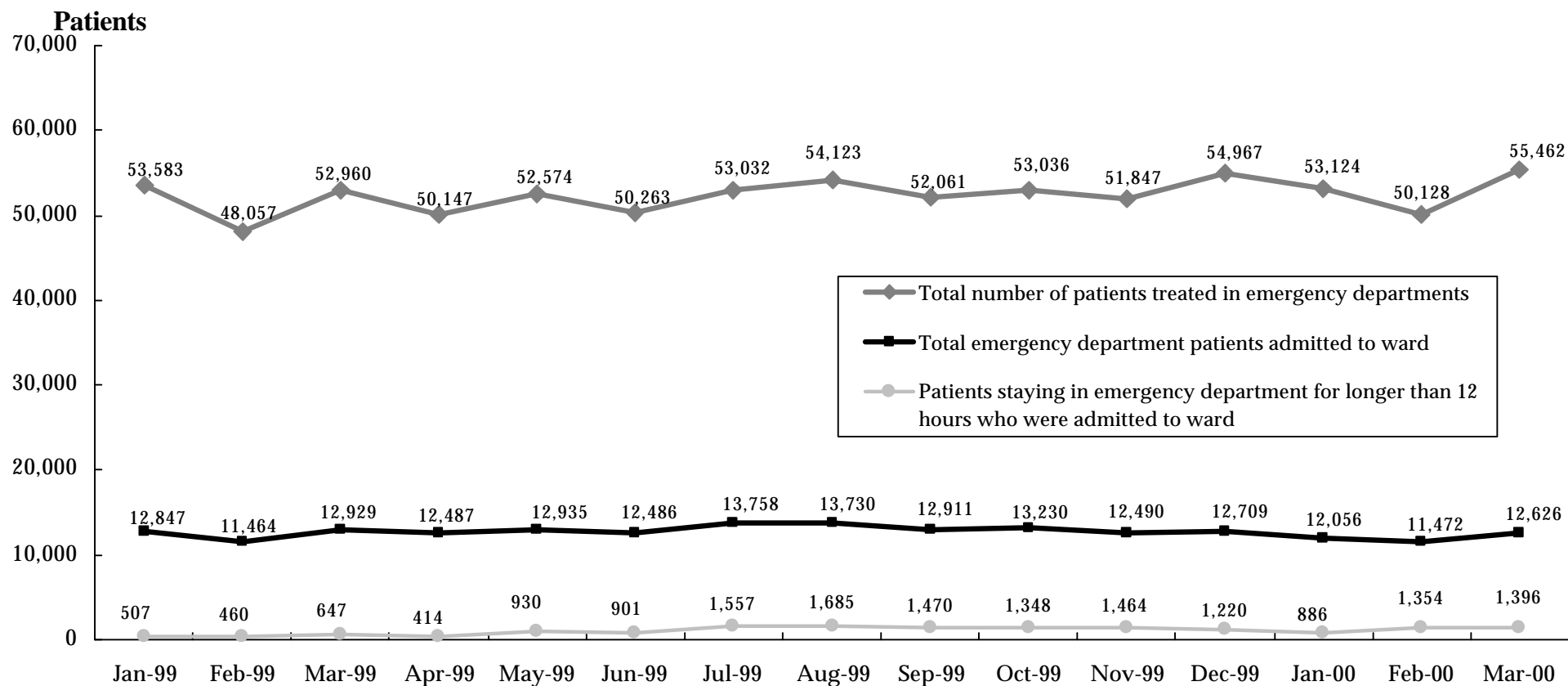
<sup>2</sup> Data include all emergency department patients, that is, they include patients who are subsequently admitted to hospital and patients who are treated in the emergency department without being admitted to hospital.

<sup>3</sup> March quarter 2000 data for Ballarat Health Services and Bendigo Health Care Group are provisional.

Source: Victorian Emergency Minimum Dataset.

## How many patients stay for an extended period in the emergency department?

**Figure 4.1 Patients Staying in Emergency Departments for Over 12 Hours While Waiting for a Hospital Bed** <sup>1 2 3 4</sup>



<sup>1</sup> The period of 'stay' is calculated from the time the patient arrives in the emergency department to the time when the patient leaves the emergency department.

<sup>2</sup> Data only for hospitals participating in the Emergency Services Enhancement Program / Hospital Access Program.

<sup>3</sup> Patients treated in DHS sponsored Chest Pain Evaluation Area Pilots are excluded from these figures.

<sup>4</sup> March quarter 2000 data are provisional.

Source: Victorian Emergency Minimum Dataset.

## How many patients stay in each hospital emergency department for longer than 12 hours?

**Table 4.3 Patients staying in selected public hospital emergency departments for over 12 hours while waiting for a hospital bed**<sup>1 2 3 4</sup>

Hospital	March Quarter 1999		December Quarter 1999		March Quarter 2000	
	Numbers	Percentage	Numbers	Percentage	Numbers	Percentage
<b>North Western Health Care Network</b>						
Northern Hospital	37	1.5%	96	3.6%	141	5.3%
Royal Melbourne Hospital	122	4.1%	754	25.0%	356	11.9%
Western Hospital	181	6.7%	304	10.9%	316	12.1%
<b>Inner and Eastern Health Care Network</b>						
The Alfred	69	2.8%	507	22.6%	547	26.0%
The Angliss Health Services	-	-	-	-	-	-
Box Hill Hospital	72	2.7%	200	7.8%	130	5.7%
Maroondah Hospital	26	2.3%	20	1.7%	25	2.2%
<b>Southern Health Care Network</b>						
Dandenong Hospital	199	9.5%	248	11.3%	394	18.0%
Monash Medical Centre	415	12.8%	653	21.6%	658	23.6%
<b>Peninsula Health Care Network</b>						
Frankston Hospital	87	3.1%	466	20.2%	445	14.6%
<b>Women's and Children's Health Care Network</b>						
Royal Children's Hospital	-	-	-	-	-	-
<b>Metropolitan Non-Network Hospitals</b>						
Austin and Repatriation Medical Centre	63	2.4%	249	9.2%	92	3.5%
St Vincent's Hospital	328	23.0%	530	34.2%	523	35.0%
<b>Non Metropolitan Hospitals</b>						
Ballarat Health Services <sup>5</sup>	-	-	-	-	-	-
Barwon Health <sup>5</sup>	2	0.1%	4	0.1%	8	0.3%
Bendigo Health Care Group	-	-	-	-	-	-
Goulburn Valley Health	3	0.2%	1	0.1%	-	-
New Latrobe Regional Hospital	10	0.9%	-	-	1	0.2%
<b>Total</b>	<b>1,614</b>	<b>4.2%</b>	<b>4,032</b>	<b>10.5%</b>	<b>3,636</b>	<b>10.1%</b>

<sup>1</sup> The period of 'stay' is calculated from the time the patient arrives in the emergency department to the time when the patient leaves the emergency department.

<sup>2</sup> Data only for hospitals participating in the Emergency Services Enhancement Program / Hospital Access Program

<sup>3</sup> Patients treated in DHS sponsored Chest Pain Evaluation Area Pilots are excluded from these figures.

<sup>4</sup> Percentage data represents the number of emergency department patients admitted to ward who spend more than 12 hours in the emergency department prior to being admitted as a proportion of all emergency department patients admitted to ward.

<sup>5</sup> March quarter 2000 data for Ballarat Health Services and Bendigo Health Care Group are incomplete.

Source: Victorian Emergency Minimum Dataset.

## How many emergency department patients are treated within ideal time?

**Table 4.4 Patients treated in selected public hospital emergency departments in triage category 1, 2 or 3 by whether treated in ACEM recommended waiting time: March quarter 2000<sup>1 2</sup>**

Hospital	Triage Category 1		Triage Category 2		Triage Category 3	
	Total patients	Treated immediately	Total patients	Treated in 10 minutes	Total patients	Treated in 30 minutes
<b>North Western Health Care Network</b>						
Northern Hospital	73	100%	401	82%	2,669	70%
Royal Melbourne Hospital	180	100%	1,133	85%	3,416	84%
Western Hospital	148	100%	887	83%	2,815	80%
<b>Inner and Eastern Health Care Network</b>						
The Alfred	276	100%	897	62%	2,664	56%
The Angliss Health Services	16	100%	341	82%	1,545	79%
Box Hill Hospital	92	100%	368	87%	2,977	73%
Maroondah Hospital	46	100%	316	80%	1,679	75%
<b>Southern Health Care Network</b>						
Dandenong Hospital	148	100%	928	79%	3,624	70%
Monash Medical Centre	209	100%	1,325	82%	3,997	71%
<b>Peninsula Health Care Network</b>						
Frankston Hospital	59	100%	492	95%	3,938	58%

<sup>1</sup> Data only for hospitals participating in the Hospital Access Program.

<sup>2</sup> Australasian College for Emergency Medicine (ACEM).

**Table 4.4 Patients treated in selected public hospital emergency departments in triage category 1, 2 or 3 by whether treated in ACEM recommended waiting time: March quarter 2000 (continued) <sup>1 2</sup>**

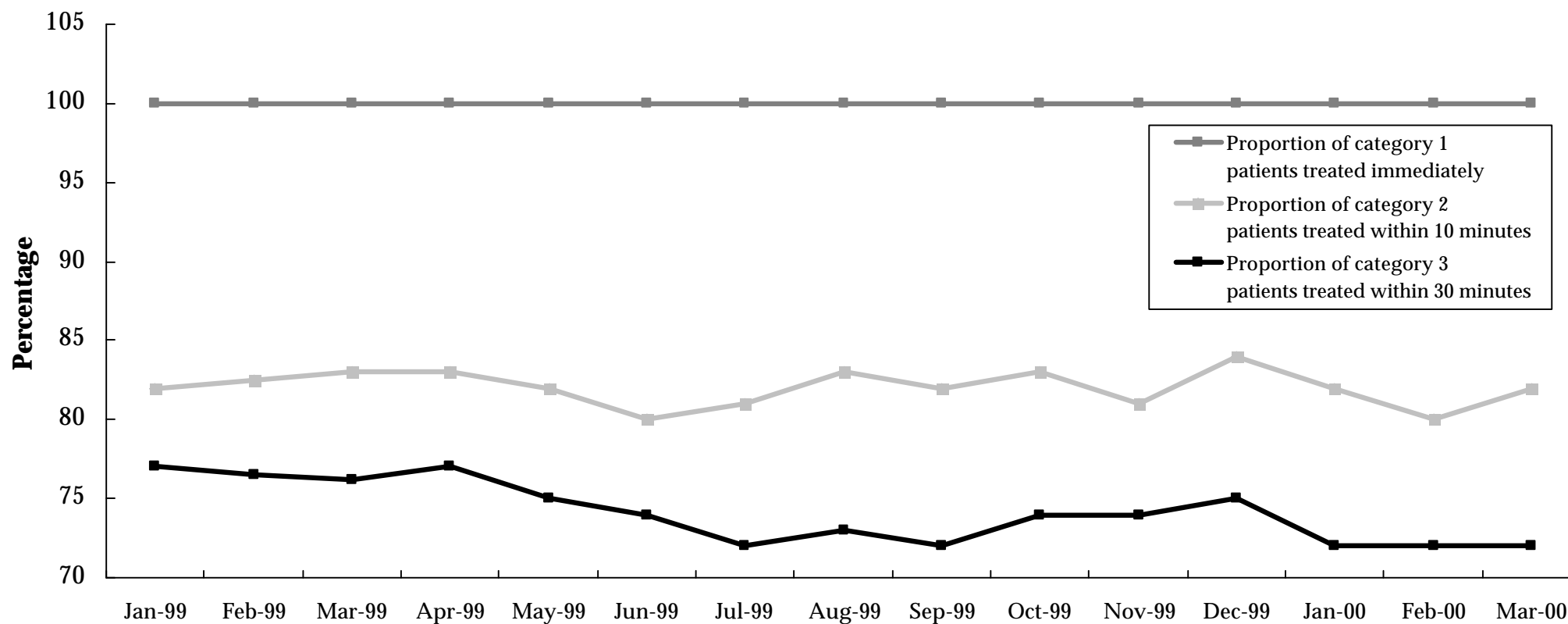
Hospital	Triage Category 1		Triage Category 2		Triage Category 3	
	Total patients	Treated immediately	Total patients	Treated in 10 minutes	Total patients	Treated in 30 minutes
<b>Women's and Children's Health Care Network</b>						
Royal Children's Hospital	21	100%	193	84%	2,564	76%
<b>Metropolitan Non-Network Hospitals</b>						
Austin and Repatriation Medical Centre	102	100%	660	77%	2,878	68%
St Vincent's Hospital	102	100%	489	76%	2,343	71%
<b>Non Metropolitan Hospitals</b>						
Ballarat Health Services <sup>3</sup>	16	100%	63	84%	436	78%
Barwon Health <sup>3</sup>	84	100%	763	83%	2,873	72%
Bendigo Health Care Group	17	100%	173	84%	926	81%
Goulburn Valley Health	17	100%	354	99%	1,668	90%
New Latrobe Regional Hospital	41	100%	370	92%	1,169	84%
<b>Total</b>	<b>1,620</b>	<b>100%</b>	<b>9,996</b>	<b>82%</b>	<b>43,300</b>	<b>72%</b>

<sup>3</sup> March quarter 2000 data for Ballarat Health Services and Bendigo Health Care Group are incomplete.

Source: Victorian Emergency Minimum Dataset.

## How many emergency department patients are treated within ideal time?

**Figure 4.2 Emergency Department Achievement of ACEM Waiting Times by Triage Category<sup>1 2 3</sup>**



<sup>1</sup> Waiting times are calculated as the time between presentation at the emergency department and commencement of treatment. The following Australasian College for Emergency Medicine (ACEM) patient categories and recommended treatment times are used:

Category 1: Resuscitation case requiring immediate treatment, for example, major trauma, cardiac arrest, unconsciousness, shock.

Category 2: Emergency case requiring treatment within 10 minutes, for example, severe trauma, chest pain, severe pain, severe breathing difficulty.

Category 3: Urgent case requiring treatment within 30 minutes, for example, moderate trauma, infection, breathing difficulty.

<sup>2</sup> Data only for hospitals participating in the Emergency Services Enhancement Program / Hospital Access Program.

<sup>3</sup> March quarter 2000 data are provisional.

## How often are hospital emergency departments too busy, and consequently go on 'bypass'?

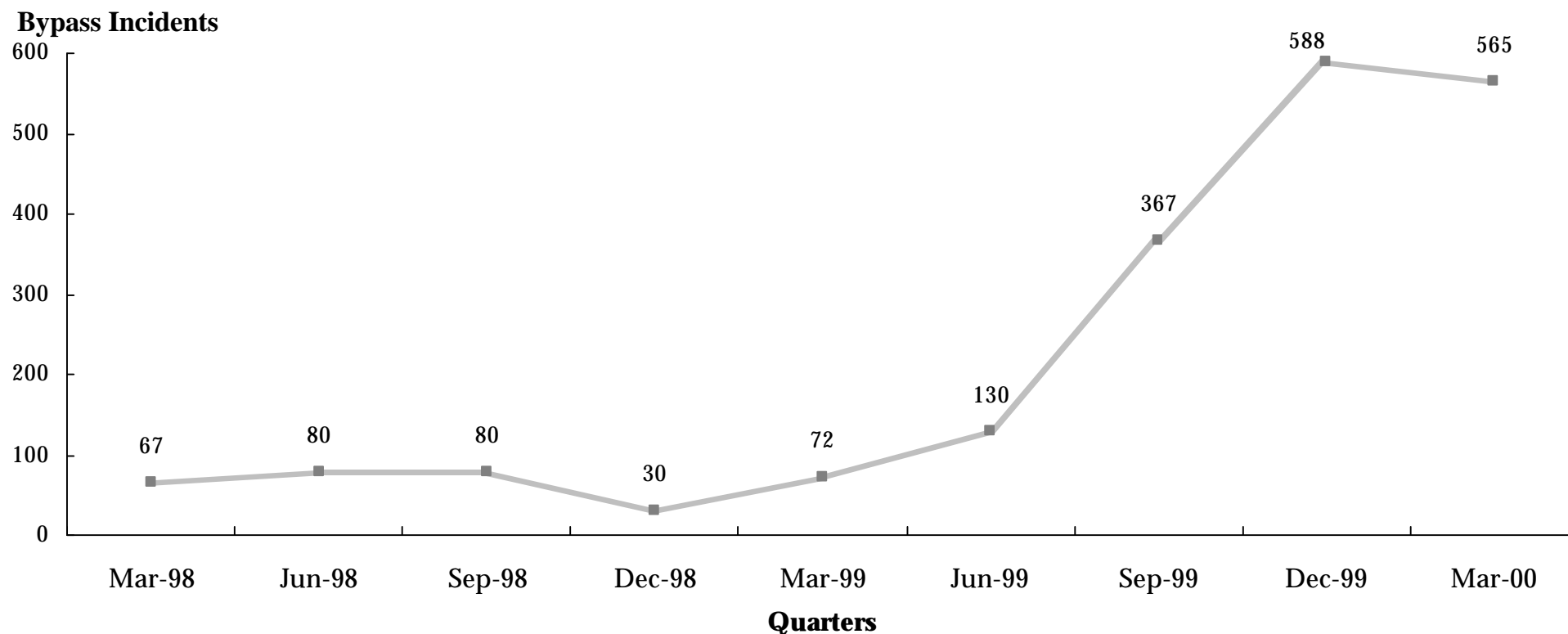
**Table 4.5 Periods of ambulance bypass, by Individual Hospital**

Hospital	March Quarter 1999	December Quarter 1999	March Quarter 2000	% Change December 1999 to March 2000
<b>North Western Health Care Network</b>				
Northern Hospital	5	6	6	0.0%
Royal Melbourne Hospital	-	14	16	14.3%
Western Hospital	17	27	36	33.3%
<b>Inner and Eastern Health Care Network</b>				
The Alfred	5	127	141	11.0%
The Angliss Health Services	1	1	1	0.0%
Box Hill Hospital	1	21	11	-47.6%
Maroondah Hospital	9	17	25	47.1%
<b>Southern Health Care Network</b>				
Dandenong Hospital	1	25	15	-40.0%
Monash Medical Centre	9	146	227	55.5%
<b>Peninsula Health Care Network</b>				
Frankston Hospital	14	176	56	-68.2%
<b>Metropolitan Non-Network Hospitals</b>				
Austin and Repatriation Medical Centre	3	13	10	-23.1%
St Vincent's Hospital	7	15	21	40.0%
<b>Total</b>	<b>72</b>	<b>588</b>	<b>565</b>	<b>-3.9%</b>

Source: Victorian Emergency Minimum Dataset.

## How often are hospital emergency departments too busy, and consequently go on 'bypass'?

**Figure 4.3 Periods of Ambulance Bypass of Public Hospitals**<sup>1 2 3</sup>



<sup>1</sup> Hospital emergency departments are bypassed by ambulances when the emergency department has reached maximum capacity and the treatment of patients already in the emergency department could be significantly compromised by the ambulance arrival of an additional patient requiring emergency treatment. Each individual period of ambulance bypass is for two hours or less.

<sup>2</sup> Data only for hospitals participating in the Emergency Services Enhancement Program / Hospital Access Program.

<sup>3</sup> Metropolitan Ambulance Service (MAS) response times are now being reported in MAS Response Report: A Quarterly Statistical Review of MAS, Melbourne. Copies of the Response Report can be obtained from MAS, Corporate Planning and Corporate Communications Unit, phone (03) 9840 3648.

Source: Metropolitan Ambulance Service.

## 5. Access to Critical Care Services

### How many hospital beds are available for patients who need intensive care?

**Table 5.1 Average Number of Public Hospital Intensive Care Beds (Excluding Step-down Beds) Available and Open at 9.00a.m., by Month<sup>1</sup>**

	Jan-99	Feb-99	Mar-99	Apr-99	May-99	Jun-99	Jul-99	Aug-99	Sep-99	Oct-99	Nov-99	Dec-99	Jan-00	Feb-00	Mar-00
Available <sup>2</sup>	11.8	9.8	6.0	4.2	4.0	4.2	3.5	2.0	2.0	5.0	5.0	3.5	5.0	5.9	5.2
Total Open <sup>3</sup>	88.9	92.0	94.0	92.4	92.0	94.0	94.0	95.0	90.0	89.0	90.0	89.0	88.0	91.3	93.7

<sup>1</sup> Based upon hospital census taken at 9.00a.m. daily.

<sup>2</sup> Available beds are unoccupied beds which are staffed, functional and available to receive new patients.

<sup>3</sup> Total open beds are all functioning and staffed beds, regardless of whether they are occupied.

Source: Office of the Coordinator of Emergency and Critical Care Services.

### How many hospital beds are available for patients who need coronary care?

**Table 5.2 Average Number of Public Hospital Coronary Care Beds (Excluding Step-down Beds) Available and Open at 9.00a.m., by Month<sup>1</sup>**

	Jan-99	Feb-99	Mar-99	Apr-99	May-99	Jun-99	Jul-99	Aug-99	Sep-99	Oct-99	Nov-99	Dec-99	Jan-00	Feb-00	Mar-00
Available	10.4	9.5	7.5	7.3	5.8	6.0	8.0	5.0	7.0	7.0	6.0	5.0	9.0	5.7	8.0
Total Open	73.5	74.0	73.0	72.0	74.0	72.0	73.0	73.0	72.0	74.0	70.0	70.0	74.0	74.3	73.1

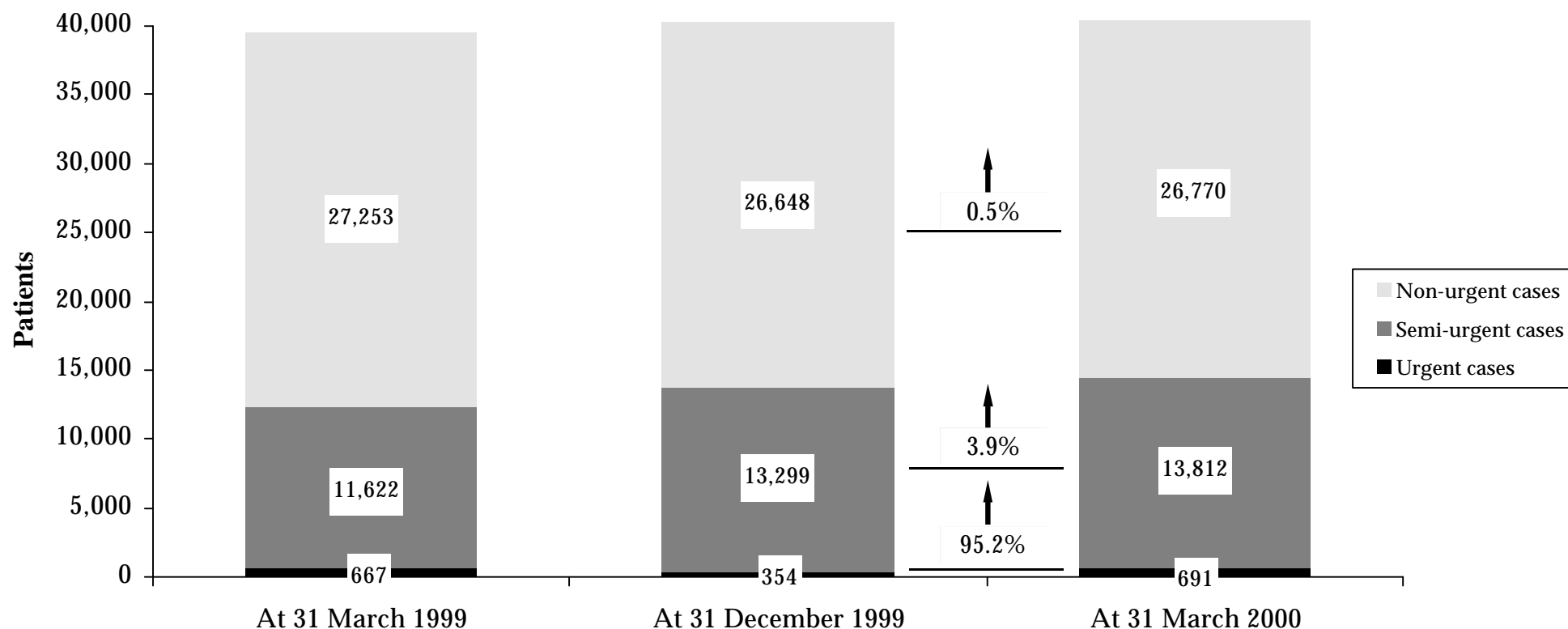
<sup>1</sup> Notes under Table 5.1 apply.

Source: Office of the Coordinator of Emergency and Critical Care Services.

## 6. Access To Elective Surgery

### How many people are on hospital waiting lists for elective surgery?

Figure 6.1 Waiting List by Urgency<sup>1 2 3</sup>



<sup>1</sup> From the 1 July 1999, Victoria has adopted the national definition for waiting list numbers. The new definition counts all patients on either the former booking or waiting lists. The time series information has been revised to reflect the new definition. Thus waiting list numbers in this issue of the HSR are different from issues prior to September 1999.

<sup>2</sup> The waiting list patient categories are:

- Urgent cases (waiting list category 1): Admission within 30 days desirable for a condition that has the potential to deteriorate quickly to the point that it may become an emergency.
- Semi-urgent cases (waiting list category 2): Admission within 90 days desirable for a condition causing some pain, dysfunction or disability but which is not likely to deteriorate quickly or become an emergency.
- Non-urgent cases (waiting list category 3): Admission at some time in the future acceptable for a condition causing minimal or no pain, dysfunction or disability which is very unlikely to deteriorate quickly and which does not have the potential to become an emergency.

<sup>3</sup> The data involved may be small. Small absolute change may have a large impact on the percentage change.

## How many people are on hospital waiting lists for elective surgery?

**Table 6.1 Waiting Lists by Urgency, by Individual Hospital** <sup>1 2</sup>

Hospital	Urgent cases			Semi-urgent cases				Non-urgent cases			
	31 Mar 1999	31 Dec 1999	31 Mar 2000	31 Mar 1999	31 Dec 1999	31 Mar 2000	% Change Dec 1999 to Mar 2000	31 Mar 1999	31 Dec 1999	31 Mar 2000	% Change Dec 1999 to Mar 2000
<b>North Western Health Care Network</b>											
Northern Hospital	32	13	39	596	741	769	4%	2,261	2,119	2,251	6.2%
Royal Melbourne Hospital	82	29	59	872	847	809	-4%	2,126	2,092	2,118	1.2%
Western Hospital <sup>3</sup>	41	10	33	530	556	582	5%	1,647	1,382	1,276	-7.7%
Sunshine Hospital <sup>3</sup>	1	2	0	64	44	59	34%	321	390	433	11.0%
<b>Inner and Eastern Health Care Network</b>											
The Alfred	59	59	79	1,023	1,556	1,609	3%	1,413	1,752	1,823	4.1%
The Angliss Health Services	9	9	21	236	235	184	-22%	349	287	270	-5.9%
Box Hill Hospital	36	3	24	430	421	431	2%	658	742	700	-5.7%
Maroondah Hospital	18	8	24	179	211	158	-25%	1,448	1,400	1,200	-14.3%
The Royal Victorian Eye and Ear Hospital	1	0	0	2,116	2,656	2,720	2%	3	41	81	97.6%
<b>Southern Health Care Network</b>											
Dandenong Hospital	20	14	28	173	262	333	27%	1,291	1,437	1,488	3.5%
Monash Medical Centre	46	38	76	633	510	585	15%	2,868	2,659	2,659	0.0%
Sandringham & District Memorial Hospital	9	4	7	89	116	124	7%	828	733	728	-0.7%
<b>Peninsula Health Care Network</b>											
Frankston Hospital	50	44	56	715	995	1,299	31%	2,236	2,292	2,185	-4.7%

<sup>1</sup> From the 1 July 1999, Victoria has adopted the national definition for waiting list numbers. The new definition counts all patients on either the former booking or waiting lists.

The time series information has been revised to reflect the new definition. Thus waiting list numbers in this issue of the HSR are different from issues prior to September 1999.

<sup>2</sup> The data involved may be small. Small absolute change may have a large impact on the percentage change.

<sup>3</sup> Western Hospital and Sunshine Hospital disaggregated on 4 May 1998 and commenced reporting separately to ESIS from 31 January 1999.

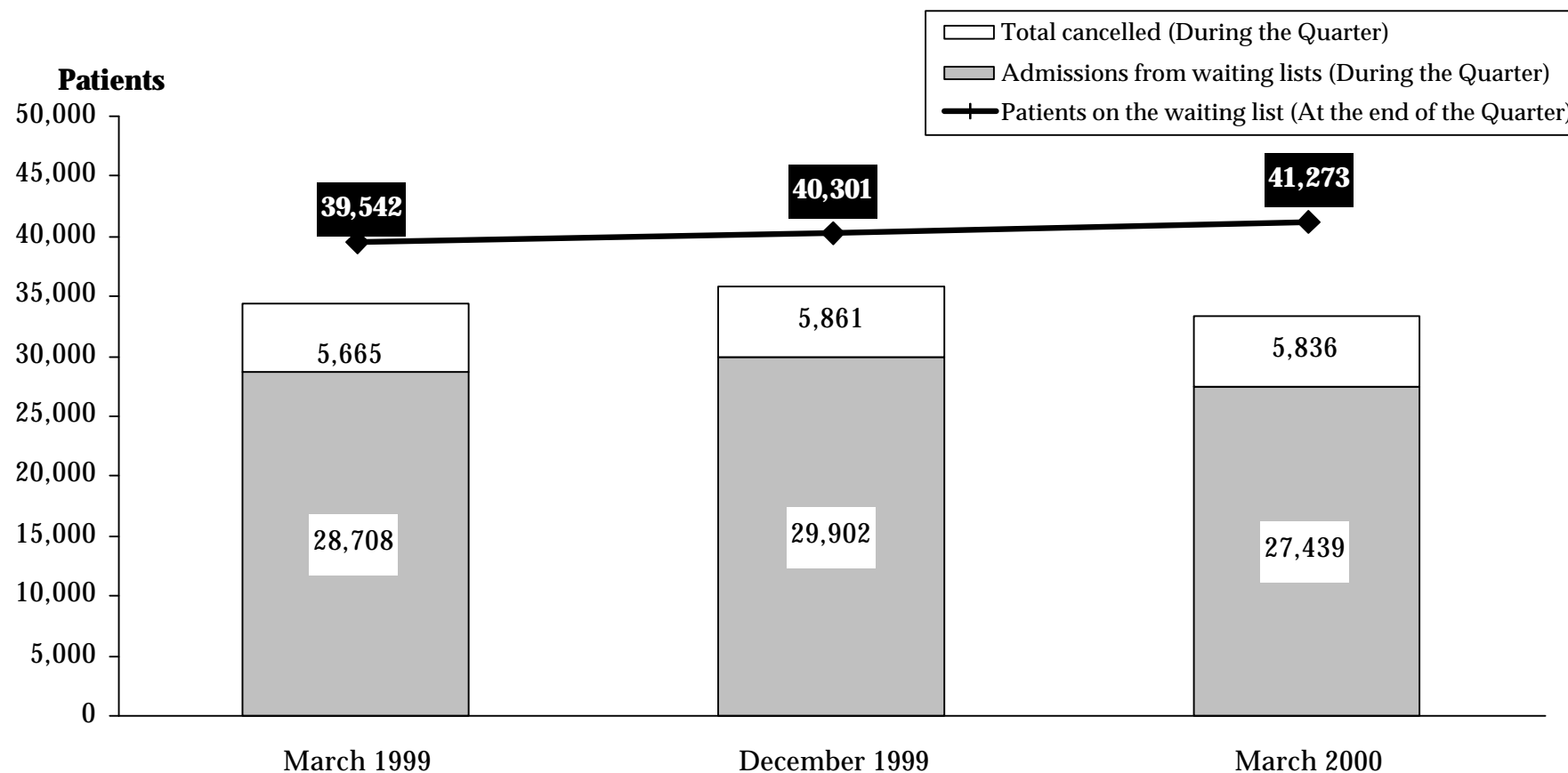
**Table 6.1 Waiting Lists by Urgency, by Individual Hospital (continued)**

Hospital	Urgent cases			Semi-urgent cases				Non-urgent cases			
	31 Mar 1999	31 Dec 1999	31 Mar 2000	31 Mar 1999	31 Dec 1999	31 Mar 2000	% Change Dec 1999 to Mar 2000	31 Mar 1999	31 Dec 1999	31 Mar 2000	% Change Dec 1999 to Mar 2000
<b>Women's and Children's Health Care Network</b>											
Royal Children's Hospital	28	6	29	232	110	142	29%	1,194	992	1,219	22.9%
Royal Women's Hospital	35	9	37	375	340	333	-2%	718	546	510	-6.6%
<b>Metropolitan Non-Network Hospitals</b>											
Austin and Repatriation Medical Centre	66	33	41	763	988	978	-1%	1,138	1,333	1,335	0.2%
St Vincent's Hospital	32	23	66	900	975	961	-1%	1,108	964	931	-3.4%
<b>Non Metropolitan Hospitals</b>											
Ballarat Health Services	4	6	1	452	366	420	15%	1,567	1,440	1,475	2.4%
Barwon Health	19	7	18	513	409	386	-6%	1,902	1,697	1,680	-1.0%
Bendigo Health Care Group	16	17	11	139	223	273	22%	871	844	817	-3.2%
Goulburn Valley Health	17	4	11	152	144	133	-8%	370	403	372	-7.7%
New Latrobe Regional Hospital	19	6	14	149	123	119	-3%	533	695	746	7.3%
Wangaratta District Base Hospital	4	0	5	228	362	290	-20%	151	65	109	67.7%
West Gippsland Hospital	23	10	12	63	109	115	6%	252	343	364	6.1%
<b>Total <sup>4</sup></b>	<b>667</b>	<b>354</b>	<b>691</b>	<b>11,622</b>	<b>13,299</b>	<b>13,812</b>	<b>4%</b>	<b>27,253</b>	<b>26,648</b>	<b>26,770</b>	<b>0.5%</b>

Source: Elective Surgery Information System.

## What is the throughput of people waiting for elective surgery?

**Figure 6.2 Admissions and Cancellations<sup>1 2</sup>**



<sup>1</sup> From the 1 July 1999, Victoria has adopted the national definition for waiting list numbers. The new definition counts all patients on either the former booking or waiting lists. The time series information has been revised to reflect the new definition. Thus waiting list numbers in this issue of the HSR are different from issues prior to September 1999.

<sup>4</sup> The data are provisional.

Source: Elective Surgery Information System.

## What is the throughput of people waiting for elective surgery?

**Table 6.2: Admissions and Cancellations, by Individual Hospital** <sup>1</sup>

Hospital	Patients on Waiting Lists				Admissions from Waiting Lists				Patients Cancelled from Waiting Lists			
	at 31 Mar 1999	at 31 Dec 1999	at 31 Mar 2000	% Change	During the Quarter			% Change	During the Quarter			% Change
				Dec 1999 to Mar 2000	Mar-99	Dec-99	Mar-00	Dec 1999 to Mar 2000	Mar-99	Dec-99	Mar-00	Dec 1999 to Mar 2000
<b>North Western Health Care Network</b>												
The Northern Hospital	2,889	2,873	3,059	6%	881	1,191	1,088	-9%	231	324	358	10%
Royal Melbourne Hospital	3,080	2,968	2,986	1%	1,646	1,528	1,547	1%	423	679	514	-24%
Western Hospital <sup>2</sup>	2,218	1,948	1,891	-3%	944	1,360	1,254	-8%	356	518	223	-57%
Sunshine Hospital <sup>2</sup>	386	436	492	13%	687	659	564	-14%	108	98	109	11%
<b>Inner and Eastern Health Care Network</b>												
The Alfred	2,495	3,367	3,511	4%	1,283	1,363	1,454	7%	338	291	384	32%
The Angliss Health Services	594	531	475	-11%	564	812	748	-8%	113	111	115	4%
Box Hill Hospital	1,124	1,166	1,155	-1%	1,321	1,313	1,198	-9%	174	158	276	75%
Maroondah Hospital	1,645	1,619	1,382	-15%	836	825	1,020	24%	228	182	264	45%
The Royal Victorian Eye and Ear Hospital	2,120	2,697	2,801	4%	2,254	2,612	2,333	-11%	213	238	303	27%
<b>Southern Health Care Network</b>												
Dandenong Hospital	1,484	1,713	1,849	8%	911	866	756	-13%	190	170	201	18%
Monash Medical Centre	3,547	3,207	3,320	4%	2,579	2,308	1,990	-14%	810	634	615	-3%
Sandringham & District Memorial Hospital	926	853	859	1%	606	567	569	0%	231	158	224	42%
<b>Peninsula Health Care Network</b>												
Frankston Hospital	3,001	3,331	3,540	6%	1,432	1,191	1,222	3%	359	314	395	26%

<sup>1</sup> From the 1 July 1999, Victoria has adopted the national definition for waiting list numbers. The new definition counts all patients on either the former booking or waiting lists.

The time series information has been revised to reflect the new definition. Thus waiting list numbers in this issue of the HSR are different from issues prior to September 1999.

<sup>2</sup> Western Hospital and Sunshine Hospital disaggregated on 4 May 1998 and commenced reporting separately to ESIS from 31 January 1999.

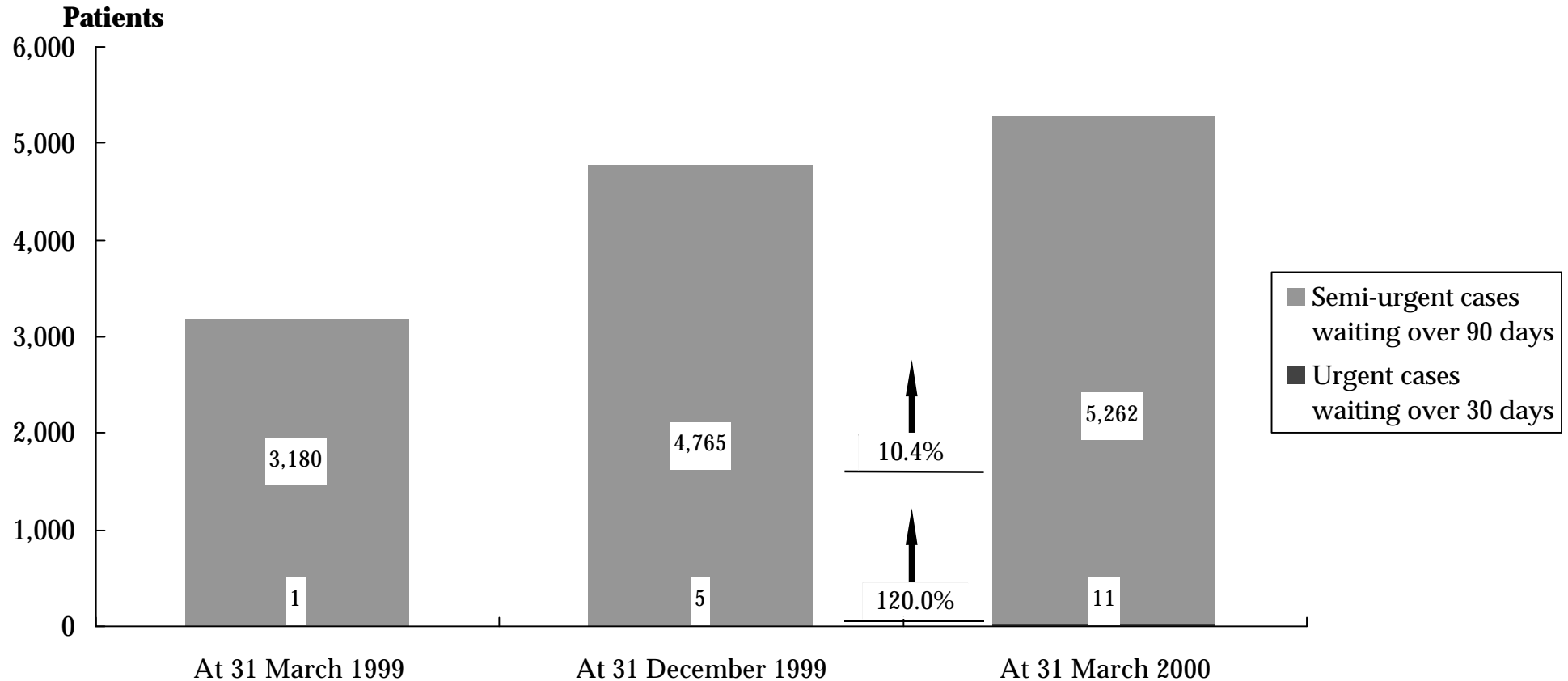
**Table 6.2: Admissions and Cancellations, by Individual Hospital (continued)**

Hospital	Patients on Waiting Lists				Admissions from Waiting Lists				Patients Cancelled from Waiting Lists			
	at 31 Mar 1999	at 31 Dec 1999	at 31 Mar 2000	% Change Dec 1999 to Mar 2000	During the Quarter		% Change Dec 1999 to Mar 2000		During the Quarter		% Change Dec 1999 to Mar 2000	
					Mar-99	Dec-99	Mar-00		Mar-99	Dec-99	Mar-00	
<b>Women's and Children's Health Care Network</b>												
Royal Children's Hospital	1,454	1,108	1,390	25%	2,389	2,561	2,291	-11%	319	257	229	-11%
Royal Women's Hospital	1,128	895	880	-2%	2,145	1,758	1,239	-30%	286	184	200	9%
<b>Metropolitan Non-Network Hospitals</b>												
Austin and Repatriation Medical Centre	1,967	2,354	2,354	-	2,095	2,044	1,977	-3%	342	404	350	-13%
St Vincent's Hospital	2,040	1,962	1,958	-0%	1,168	1,452	1,298	-11%	238	202	323	60%
<b>Non Metropolitan Hospitals</b>												
Ballarat Health Services	2,023	1,812	1,896	5%	433	727	636	-13%	177	158	100	-37%
Barwon Health	2,434	2,113	2,084	-1%	983	1,080	1,019	-6%	85	320	197	-38%
Bendigo Health Care Group	1,026	1,084	1,101	2%	718	822	652	-21%	136	161	122	-24%
Goulburn Valley Health	539	551	516	-6%	645	720	700	-3%	102	116	124	7%
New Latrobe Regional Hospital	701	824	879	7%	1,079	976	921	-6%	131	104	74	-29%
Wangaratta District Base Hospital	383	427	404	-5%	503	566	535	-5%	34	51	85	67%
West Gippsland Hospital	338	462	491	6%	606	601	428	-29%	41	29	51	76%
<b>Total</b>	<b>39,542</b>	<b>40,301</b>	<b>41,273</b>	<b>2%</b>	<b>28,708</b>	<b>29,902</b>	<b>27,439</b>	<b>-8%</b>	<b>5,665</b>	<b>5,861</b>	<b>5,836</b>	<b>-0%</b>

Source: Elective Surgery Information System.

## How many people are on hospital waiting list for longer than the ideal time?

Figure 6.3 People on elective surgery waiting lists for longer than ideal time by Urgency<sup>1 2 3 4</sup>



<sup>1</sup> Waiting longer than ideal includes semi-urgent patients waiting over 90 days and urgent patients waiting over 30 days.

<sup>2</sup> The data involved may be small. Small absolute change may have a large impact on the percentage change.

<sup>3</sup> From the 1 July 1999, Victoria has adopted the national definition for waiting list numbers. The new definition counts all patients on either the former booking or waiting lists. However, the number of people waiting more than the ideal time has always included patients on the former booking list as well as the former waiting list.

<sup>4</sup> The data are provisional.

## How many people are on hospital waiting lists for longer than the ideal time?

**Table 6.3 People on elective surgery waiting lists for longer than ideal time, by Individual Hospital** <sup>1 2</sup>

Hospital	Urgent cases waiting over 30 days				Semi-urgent cases waiting over 90 days			
	31 Mar 1999	31 Dec 1999	31 Mar 2000	% Change Dec 1999 to Mar 2000	31 Mar 1999	31 Dec 1999	31 Mar 2000	% Change Dec 1999 to Mar 2000
<b>North Western Health Care Network</b>								
Northern Hospital	0	0	0	-	114	298	300	0.7%
Royal Melbourne Hospital	1	0	0	-	359	349	312	-10.6%
Western Hospital <sup>3</sup>	0	0	1	n.a.	121	154	154	0.0%
Sunshine Hospital <sup>3</sup>	-	0	0	-	1	4	2	-50.0%
<b>Inner and Eastern Health Care Network</b>								
The Alfred	0	0	0	-	370	832	970	16.6%
The Angliss Health Services	0	0	0	-	1	2	6	200.0%
Box Hill Hospital	0	0	0	-	23	64	37	-42.2%
Maroondah Hospital	0	0	0	-	0	29	4	-86.2%
The Royal Victorian Eye and Ear Hospital	0	0	0	-	819	1182	1336	13.0%
<b>Southern Health Care Network</b>								
Dandenong Hospital	0	2	0	n.a.	9	90	116	28.9%
Monash Medical Centre	0	0	3	n.a.	200	94	133	41.5%
Sandringham & District Memorial Hospital	0	0	0	-	5	25	21	-16.0%
<b>Peninsula Health Care Network</b>								
Frankston Hospital	0	0	0	-	125	360	502	39.4%

<sup>1</sup> From the 1 July 1999, Victoria has adopted the national definition for waiting list numbers. The new definition counts all patients on either the former booking or waiting lists. However, the number of people waiting more than the ideal time has always included patients on the former booking list as well as the former waiting list.

<sup>2</sup> The data involved may be small. Small absolute change may have a large impact on the percentage change.

<sup>3</sup> Western Hospital and Sunshine Hospital disaggregated on 4 May 1998 and commenced reporting separately to ESIS from 31 January 1999.

**Table 6.3 People on elective surgery waiting lists for longer than ideal time, by Individual Hospital (continued)**

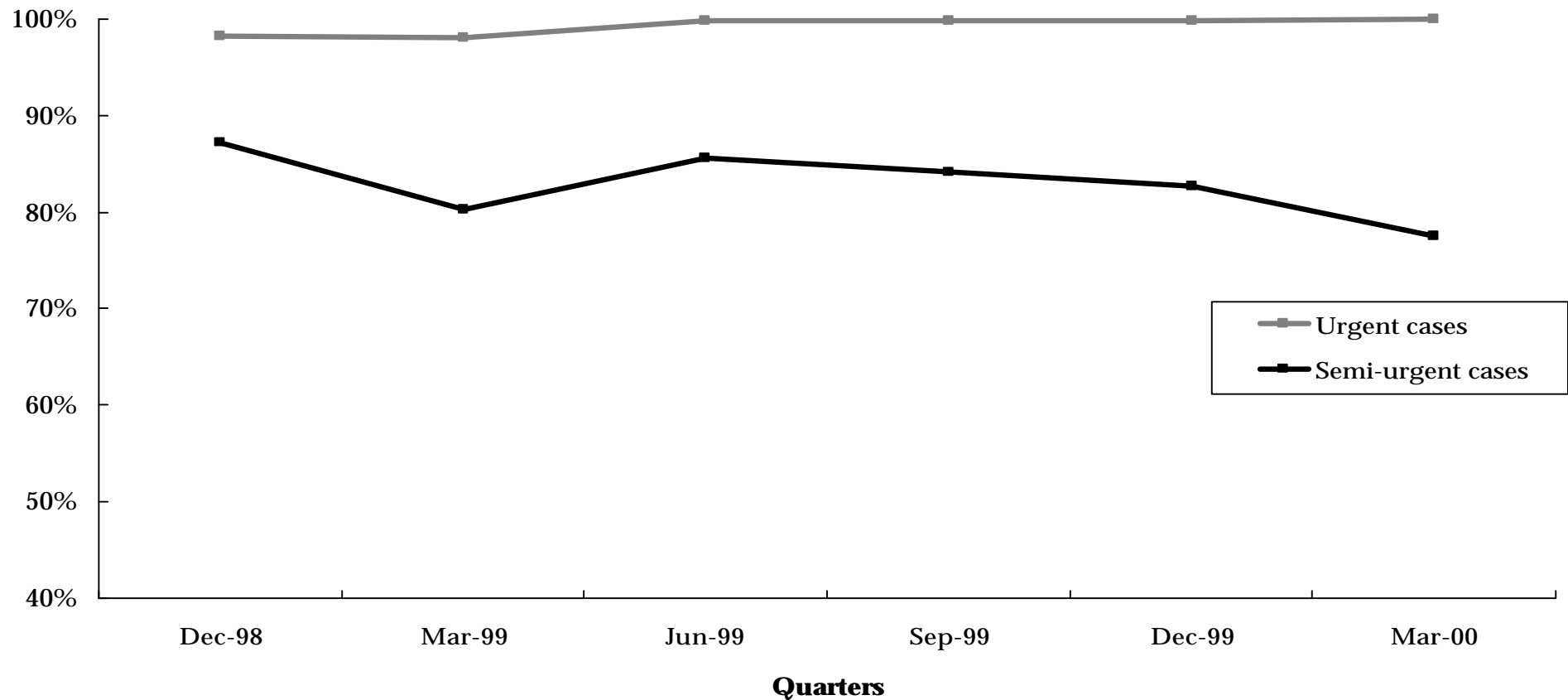
Hospital	Urgent cases waiting over 30 days				Semi-urgent cases waiting over 90 days			
	31 Mar 1999	31 Dec 1999	31 Mar 2000	% Change Dec 1999 to Mar 2000	31 Mar 1999	31 Dec 1999	31 Mar 2000	% Change Dec 1999 to Mar 2000
<b>Women's and Children's Health Care Network</b>								
Royal Children's Hospital	0	0	0	-	0	8	3	-62.5%
Royal Women's Hospital	0	0	0	-	14	2	0	-100.0%
<b>Metropolitan Non-Network Hospitals</b>								
Austin & Repatriation Medical Centre	0	0	0	-	228	397	400	0.8%
St Vincent's Hospital	0	0	0	-	346	420	491	16.9%
<b>Non Metropolitan Hospitals</b>								
Ballarat Health Services	0	0	0	-	253	173	203	17.3%
Barwon Health	0	0	1	n.a.	150	122	114	-6.6%
Bendigo Health Care Group	0	0	0	-	7	35	68	94.3%
Goulburn Valley Health	0	0	0	-	0	0	0	-
New Latrobe Regional Hospital	0	0	0	-	0	0	0	-
Wangaratta District Base Hospital	0	0	0	-	33	125	77	-38.4%
West Gippsland Hospital	0	3	6	100.0%	2	0	13	n.a.
<b>Total</b> <sup>4</sup>	1	5	11	120.0%	3,180	4,765	5,262	10.4%

<sup>4</sup> Royal Women's Hospital 31 December 1999 data for semi-urgent waiting over 90 days has been revised since the previous issue of the Hospital Services Report.

Source: Elective Surgery Information System.

## What percentage of patients are admitted within clinical ideal times?

Figure 6.4 Percentage of patients from elective surgery waiting lists who were admitted within the ideal time, by Urgency<sup>1,2</sup>



<sup>1</sup> Waiting longer than ideal includes semi-urgent patients waiting over 90 days and urgent patients waiting over 30 days.

<sup>2</sup> The data are provisional.

## What percentage of patients are admitted within clinical ideal times?

**Table 6.4 Percentage of people from elective surgery waiting lists who were admitted within the ideal time, by Urgency, by Individual Hospital**<sup>1 2</sup>

Hospital	Urgent cases admitted within 30 days during the quarter				Semi-urgent cases admitted within 90 days during the quarter			
	December 1999		March 2000		December 1999		March 2000	
	Numbers	Percentage	Numbers	Percentage	Numbers	Percentage	Numbers	Percentage
<b>North Western Health Care Network</b>								
The Northern Hospital	264	100.0%	211	100.0%	507	76.9%	445	70.0%
Royal Melbourne Hospital	522	100.0%	490	100.0%	542	77.8%	542	75.4%
Western Hospital	208	100.0%	182	100.0%	527	77.6%	488	76.0%
Sunshine Hospital	37	100.0%	33	100.0%	161	95.3%	114	95.8%
<b>Inner and Eastern Health Care Network</b>								
The Alfred	603	99.8%	544	100.0%	474	74.5%	558	72.8%
The Angliss Health Services	79	100.0%	64	100.0%	407	100.0%	385	98.7%
Box Hill Hospital	214	100.0%	219	100.0%	676	91.1%	556	83.1%
Maroondah Hospital	179	100.0%	161	100.0%	233	94.3%	285	79.2%
The Royal Victorian Eye and Ear Hospital	1	100.0%	1	100.0%	1918	73.8%	1497	64.7%
<b>Southern Health Care Network</b>								
Dandenong Hospital	330	100.0%	278	100.0%	194	78.9%	167	70.2%
Monash Medical Centre	618	100.0%	553	100.0%	762	91.5%	638	91.8%
Sandringham & District Memorial Hospital	89	100.0%	98	100.0%	190	92.2%	193	88.9%
<b>Peninsula Health Care Network</b>								
Frankston Hospital	290	99.7%	291	100.0%	290	58.2%	278	54.6%

<sup>1</sup> The data are provisional.

<sup>2</sup> The data involved may be small. Small absolute change may have a large impact on the percentage change.

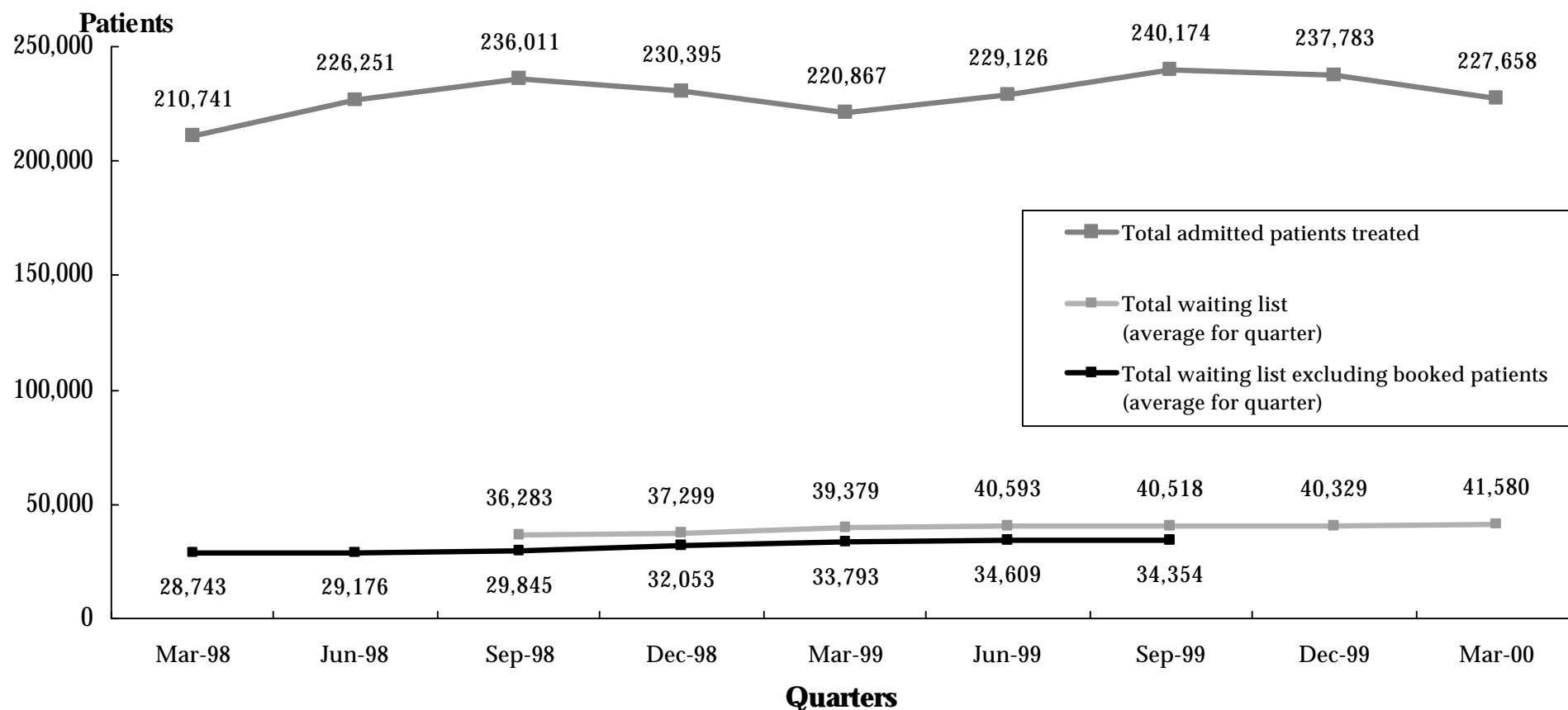
**Table 6.4 Percentage of people from elective surgery waiting lists who were admitted within the ideal time, by Urgency, by Individual Hospital (continued)**

Hospital	Urgent cases admitted within 30 days during the quarter				Semi-urgent cases admitted within 90 days during the quarter			
	December 1999		March 2000		December 1999		March 2000	
	Numbers	Percentage	Numbers	Percentage	Numbers	Percentage	Numbers	Percentage
<b>Women's and Children's Health Care Network</b>								
Royal Children's Hospital	223	100.0%	209	100.0%	404	94.4%	394	94.7%
Royal Women's Hospital	200	100.0%	153	100.0%	618	99.2%	472	99.4%
<b>Metropolitan Non-Network Hospitals</b>								
Austin & Repatriation Medical Centre	496	100.0%	470	100.0%	833	80.9%	758	74.1%
St Vincent's Hospital	316	100.0%	308	100.0%	701	81.7%	567	75.8%
<b>Non Metropolitan Hospitals</b>								
Ballarat Health Services	53	100.0%	66	100.0%	328	77.9%	286	80.8%
Barwon Health	87	100.0%	82	100.0%	484	86.9%	447	76.4%
Bendigo Health Care Group	127	100.0%	109	100.0%	181	72.7%	154	70.3%
Goulburn Valley Health	136	100.0%	126	100.0%	325	100.0%	335	99.4%
New Latrobe Regional Hospital	97	100.0%	82	100.0%	330	100.0%	323	100.0%
Wangaratta District Base Hospital	23	100.0%	12	100.0%	341	80.2%	318	73.6%
West Gippsland Hospital	175	100.0%	103	100.0%	217	98.2%	185	93.4%
<b>Total <sup>3</sup></b>	<b>5367</b>	<b>99.9%</b>	<b>4,845</b>	<b>100.0%</b>	<b>11,643</b>	<b>82.7%</b>	<b>10,385</b>	<b>77.6%</b>

Source: Elective Surgery Information System.

## How does the waiting list compare to the total number of patients treated?

**Figure 6.5 Waiting List Compared with Overall Admitted Patient Activity<sup>1 2 3</sup>**



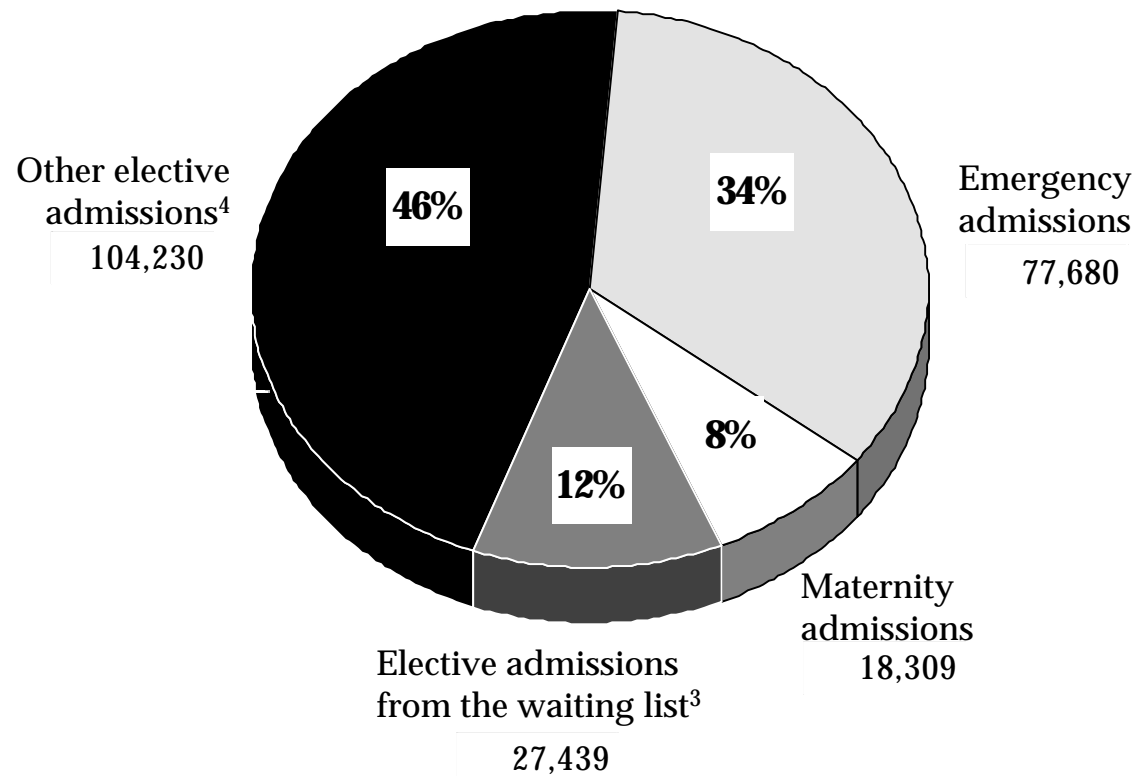
<sup>1</sup> The data are provisional.

<sup>2</sup> From the 1 July 1999, Victoria has adopted the national definition for waiting list numbers. The new definition counts all patients on either the former booking or waiting lists. For an interim period the numbers of patients according to the current (Total waiting list) and the former (Total waiting list excluding booked patients) definitions will be displayed.

## How much of total hospital activity comes from the waiting list?

**Figure 6.6 Separations by Admission Type: March Quarter 2000** <sup>1 2</sup>

---



<sup>1</sup> Percentages may not add due to rounding.

<sup>2</sup> Includes maternity and newborns admissions.

<sup>3</sup> Patients admitted from the Elective Surgery Information System waiting list during the quarter:  
The data are provisional.

<sup>4</sup> Includes statistical admissions, which refer to a change in patient care type.

Source: Victorian Admitted Episode Dataset (21 May 2000 update).  
Elective Surgery Information System.

# 7. Glossary

## *What Do the Terms Used in this Report Mean?*

### ***Admitted Patient***

Someone who is an inpatient in a hospital. Sameday patients who are admitted for less than 24 hours are also counted as inpatients but people who attend hospital for outpatient clinics are not.

### ***Cancellation***

The request for elective surgery has been withdrawn and the patient is removed from this hospital's Waiting List without admission for the awaited procedure. This can occur for clinical reasons, transfer of the patient to another hospital, or at the request of the patient.

### ***Casemix Funded***

A system of funding hospitals according to the actual number and type of services that they provide. Casemix funding was introduced for most Victorian public hospitals in July 1993.

### ***Coronary Care***

A hospital unit with specialised staff and equipment to care for patients with heart disease.

### ***Elective Admission***

A planned admission to hospital. Emergency admissions and transfers from other hospitals are not counted as elective admissions.

### ***Elective Surgery***

Planned surgery that is not an emergency requiring hospital admission within 24 hours.

### ***Emergency Admission***

An unplanned admission to hospital due to unexpected illness or injury that requires urgent care.

### ***Emergency Department***

A hospital department that specialises in providing emergency care for people who are in need of urgent care (ambulance cases for example) and people who choose to seek treatment in an emergency department.

### ***Health Care Network***

A group of community acute hospitals, psychiatric services, tertiary acute hospitals and aged care services in the metropolitan area that is managed by a single board of directors.

### ***Intensive Care***

A hospital unit with specialised staff and equipment to provide continuous care for critically ill, injured or post-operative patients.

### ***Non Sameday Patient***

In the context of this report, a non sameday patient is an inpatient who leaves hospital on a later date than when they were admitted.

### ***Separation***

When an inpatient leaves a hospital. This is the technical way of counting the number of inpatients treated by a hospital.

### ***Step Down Bed***

Hospital beds with specialised staff and equipment to care for patients who no longer need coronary or intensive care but are not yet ready to move to a general hospital ward.

### ***Transfer***

When an inpatient is moved from one hospital to another. This might be in order to obtain a specialised treatment not available at the first hospital or because of the patient's preferences.

### ***Waiting List Hospital***

A major public hospital that performs elective surgery for public patients and uses a waiting list to properly keep track of people who require elective surgery.