

Avoidable mortality (AM) in Victoria from 1997 to 2003 due to *colorectal cancer*

Definitions

Avoidable mortality (AM) refers to deaths classed as untimely and unnecessary – deaths from diseases for which effective public health and/or medical interventions currently exist – in those aged under 75 years.

Fifty-six conditions, including *colorectal cancer*, currently meet these requirements. All other deaths in people aged less than 75 years are considered unavoidable. Deaths in those aged 75 years and over are also considered unavoidable and not included in the analyses.

Colorectal cancer, often called bowel cancer, is the second most common cancer in men and women. Eighty percent of cases are sporadic with no known hereditary genetic associations.

Key AM findings on *colorectal cancer*

Colorectal cancer was the third leading cause of avoidable death in Victorians between 1997 and 2003.

Avoidable deaths from *colorectal cancer* increased sharply among Victorians aged between 30 and 34 years. The greatest number of avoidable deaths from *colorectal cancer* occurred in people aged between 70 and 74. See graph 1.

The avoidable death rate due to *colorectal cancer* was significantly higher in males than females. The avoidable death rate due to *colorectal cancer* significantly declined between 1997 and 2003. Rates are expected to further decline if this trend continues. See graph 2.

Disadvantage and location

There were no significant differences in avoidable *colorectal cancer* death rates in men by socio-economic status or in men in rural compared to metropolitan areas. See table 1.

There were no significant differences in avoidable *colorectal cancer* death rates in women by socio-economic status or in women in rural compared to metropolitan areas. One exception to the latter trend occurred in 2002 when the rate was significantly higher in women from rural areas. See table 2.

General information

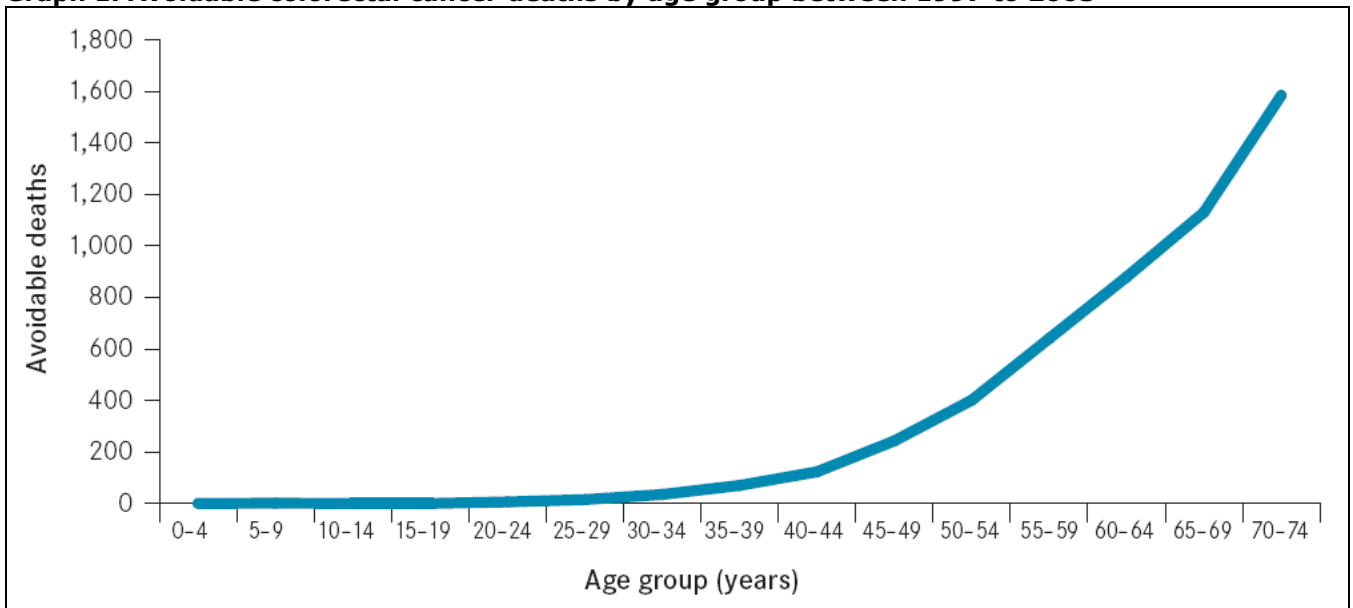
This fact sheet is an adjunct to *Avoidable Mortality in Victoria: Trends between 1997 and 2003*, the first comprehensive report on AM in Victoria which provides a detailed examination of the 10 most common causes of AM, which together account for 50% of deaths in the state during this period.

The report is compiled via a simple and practical Victoria-wide, population-based method of counting AM rates.

Declining trends in AM may indicate improvements in the healthcare system.

Increasing trends in AM may indicate shortcomings in the healthcare system, such as a lack of use of effective interventions.

Graph 1. Avoidable colorectal cancer deaths by age group between 1997 to 2003



Graph 2: AM rates in Victoria (1997 to 2003) due to colorectal cancer

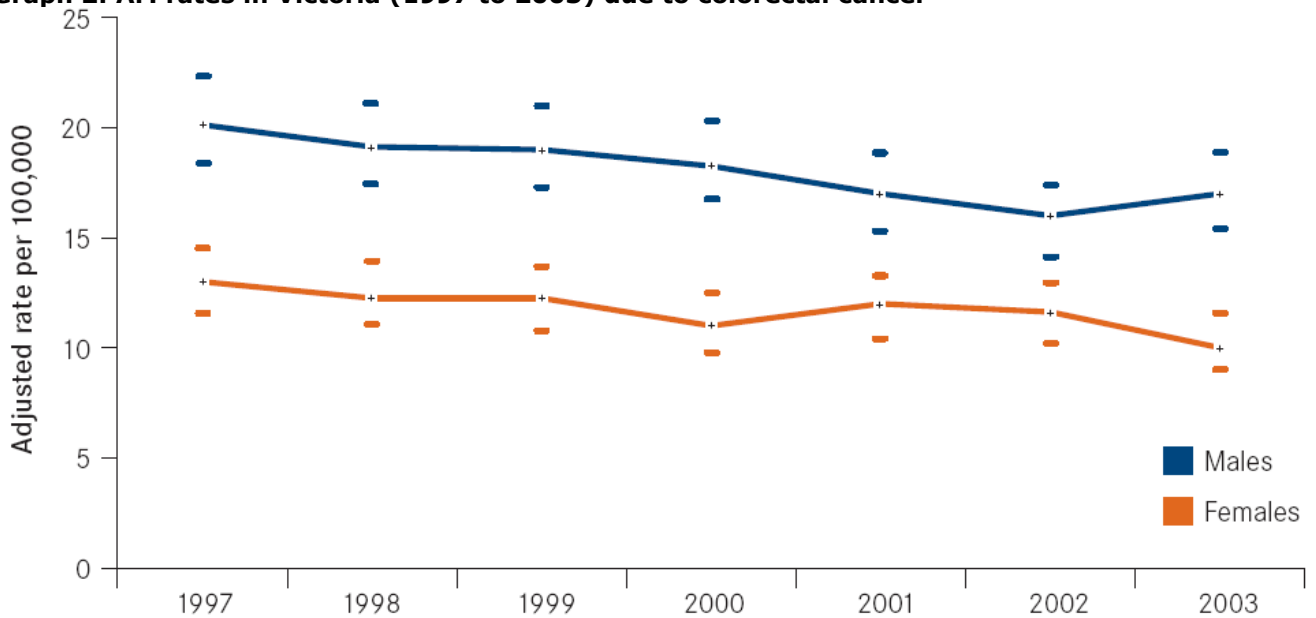


Table 1: Adjusted colorectal cancer AM rates (95% CI) in Victorian males (1997–2003)

		Males (rate per 100,000)																				
		1997			1998			1999			2000			2001			2002			2003		
Colorectal cancer		Adjusted	95%CI	Adjusted	95%CI	Adjusted	95%CI	Adjusted	95%CI	Adjusted	95%CI	Adjusted	95%CI	Adjusted	95%CI	Adjusted	95%CI	Adjusted	95%CI			
Victoria		20	18 22	19	17 21	19	17 21	18	17 20	17	15 19	16	14 17	17	15 19	16	14 17	17	15 19			
	Metropolitan	19	17 21	18	16 20	20	17 22	18	16 20	16	14 18	16	14 18	15	13 17	17	15 19	17	15 19			
	Rural	23	20 27	23	19 26	18	15 21	20	16 23	19	16 23	19	16 23	18	15 22	18	15 22	18	15 21			
IRSED category:																						
	Most disadvantaged	19	15 24	19	14 23	21	16 25	21	17 26	16	12 20	13	9 16	22	18 27	18	14 22	18	14 22			
	2	25	20 30	23	19 28	19	15 23	18	14 22	20	16 24	20	16 24	20	16 24	14	11 18	14	11 18			
	3	23	19 28	20	16 24	18	14 22	17	13 21	18	14 22	15	12 19	16	12 20	19	16 22	16	12 20			
	4	18	14 22	20	16 24	17	13 21	19	15 23	16	12 20	16	12 20	16	12 20	16	12 20	16	13 20			
	Least disadvantaged	16	12 20	15	11 18	22	17 26	18	14 22	14	10 18	16	12 20	17	13 21	14	10 18	17	13 21			
ARIA category:																						
	Accessible	23	16 31	26	18 34	12	7 18	20	14 27	18	12 24	21	14 27	18	12 25	14	27 18	12	25 18			
	Highly Accessible	20	18 22	19	17 21	20	18 22	18	16 20	16	15 18	15	13 17	17	15 18	15	13 17	17	15 18			
	Moderately accessible	25	14 36	16	8 25	17	8 26	16	7 24	32	19 46	22	12 33	25	14 36	25	14 36	25	14 36			
Rate ratios:																						
	Male:Female	1.57		1.56		1.57		1.67		1.44		1.37		1.68								
	Rural:Metro	1.24		1.27		0.91		1.12		1.21		1.26		1.08								
	Most:Least disadvantaged	1.18		1.28		0.97		1.19		1.16		0.81		1.34								
	Least:Most accessible	1.27		0.88		0.87		0.86		1.99		1.49		1.52								

Note: Adjusted rates are significantly different (P<0.05) when their 95% confidence intervals do not overlap
 Adjusted rates and rate ratios in RED are significantly greater (P<0.05) than the corresponding rate for Victoria or 1, respectively
 Adjusted rates and rate ratios in GREEN are significantly lower (P<0.05) than the corresponding rate for Victoria or 1, respectively

Table 2: Adjusted colorectal cancer AM rates (95% CI) in Victorian females (1997–2003)

		Females (rate per 100,000)																				
		1997			1998			1999			2000			2001			2002			2003		
Colorectal cancer		Adjusted	95%CI	Adjusted	95%CI	Adjusted	95%CI	Adjusted	95%CI	Adjusted	95%CI	Adjusted	95%CI	Adjusted	95%CI	Adjusted	95%CI	Adjusted	95%CI			
Victoria		13	11 14	12	11 14	12	11 14	11	10 12	12	10 13	12	10 13	12	10 13	10	9 11	10	9 11			
	Metropolitan	12	10 14	12	10 14	12	11 14	10	8 11	11	10 13	10	8 11	9	8 11	9	8 11	9	8 11			
	Rural	15	12 18	13	10 16	12	10 15	14	11 17	13	10 16	15	12 18	12	10 15	12	10 15	12	10 15			
IRSED category:																						
	Most disadvantaged	13	9 16	12	9 16	11	8 14	13	9 16	12	9 15	11	8 14	8	6 11	11	8 14	8	6 11			
	2	16	12 20	12	9 15	10	7 12	9	7 12	14	11 17	10	7 13	11	9 14	11	9 14	11	9 14			
	3	13	10 16	12	8 15	15	11 18	12	8 15	13	10 17	15	12 19	12	9 16	10	7 13	10	7 12			
	4	13	9 16	10	7 13	14	10 17	10	7 13	12	9 16	10	7 13	10	7 13	10	7 13	10	7 12			
	Least disadvantaged	10	7 13	16	12 19	12	9 16	12	9 15	7	5 9	11	8 14	9	6 11	11	8 14	9	6 11			
ARIA category:																						
	Accessible	14	8 19	17	11 24	15	9 21	12	7 17	13	8 19	18	12 25	10	5 14	14	10 19	10	5 14			
	Highly Accessible	13	11 14	12	11 14	12	10 13	10	9 12	12	10 13	11	9 12	10	9 11	10	9 11	10	9 11			
	Moderately accessible	18	8 27	8	2 15	18	8 27	30	17 44	2	0 6	15	7 24	14	5 22	22	14 30	14	5 22			
Rate ratios:																						
	Male:Female																					
	Rural:Metro	1.30		1.06		1.02		1.41		1.18		1.52		1.32								
	Most:Least disadvantaged	1.23		0.79		0.85		1.08		1.67		1.07		0.94								
	Least:Most accessible	1.41		0.70		1.48		2.93		0.20		1.42		1.37								

Note: Adjusted rates are significantly different (P<0.05) when their 95% confidence intervals do not overlap
 Adjusted rates and rate ratios in RED are significantly greater (P<0.05) than the corresponding rate for Victoria or 1, respectively
 Adjusted rates and rate ratios in GREEN are significantly lower (P<0.05) than the corresponding rate for Victoria or 1, respectively

Information in this fact sheet is taken from the report, *Avoidable Mortality in Victoria: Trends between 1997 and 2003*.