

Public Health



Jim Hyde
Director, Public Health

Definition

Definition: *Public Health* is the organised response by society to protect and promote health, and to prevent illness, injury and disability.

The starting point for identifying public health issues, problems and priorities, and for designing and implementing interventions, is the population as a whole, or population sub-groups.

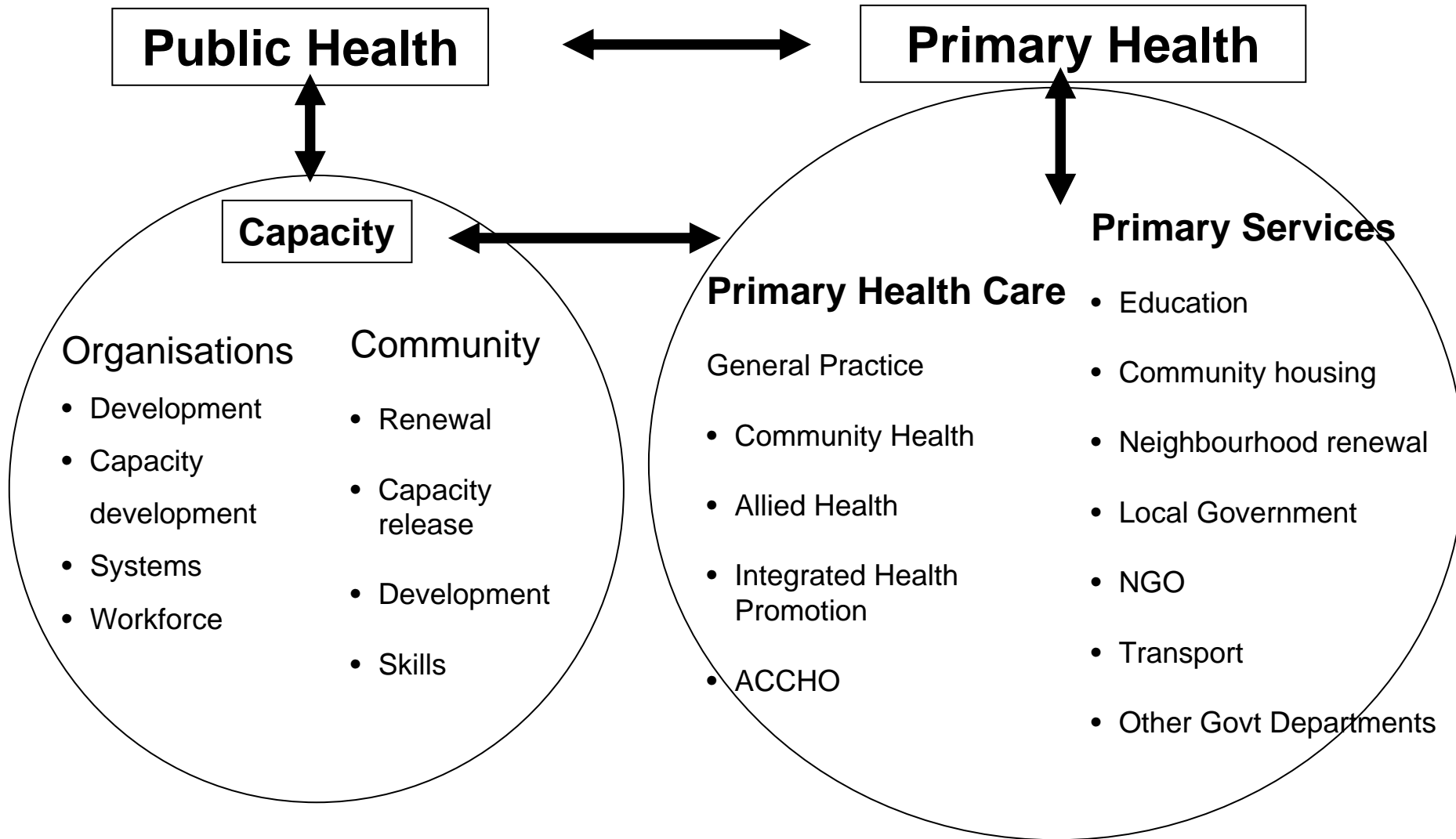
Source: National Public Health Partnership (1998), Public Health in Australia: The Public Health Landscape: person society environment (Melbourne, NPHP)

Public Health - interventions not services

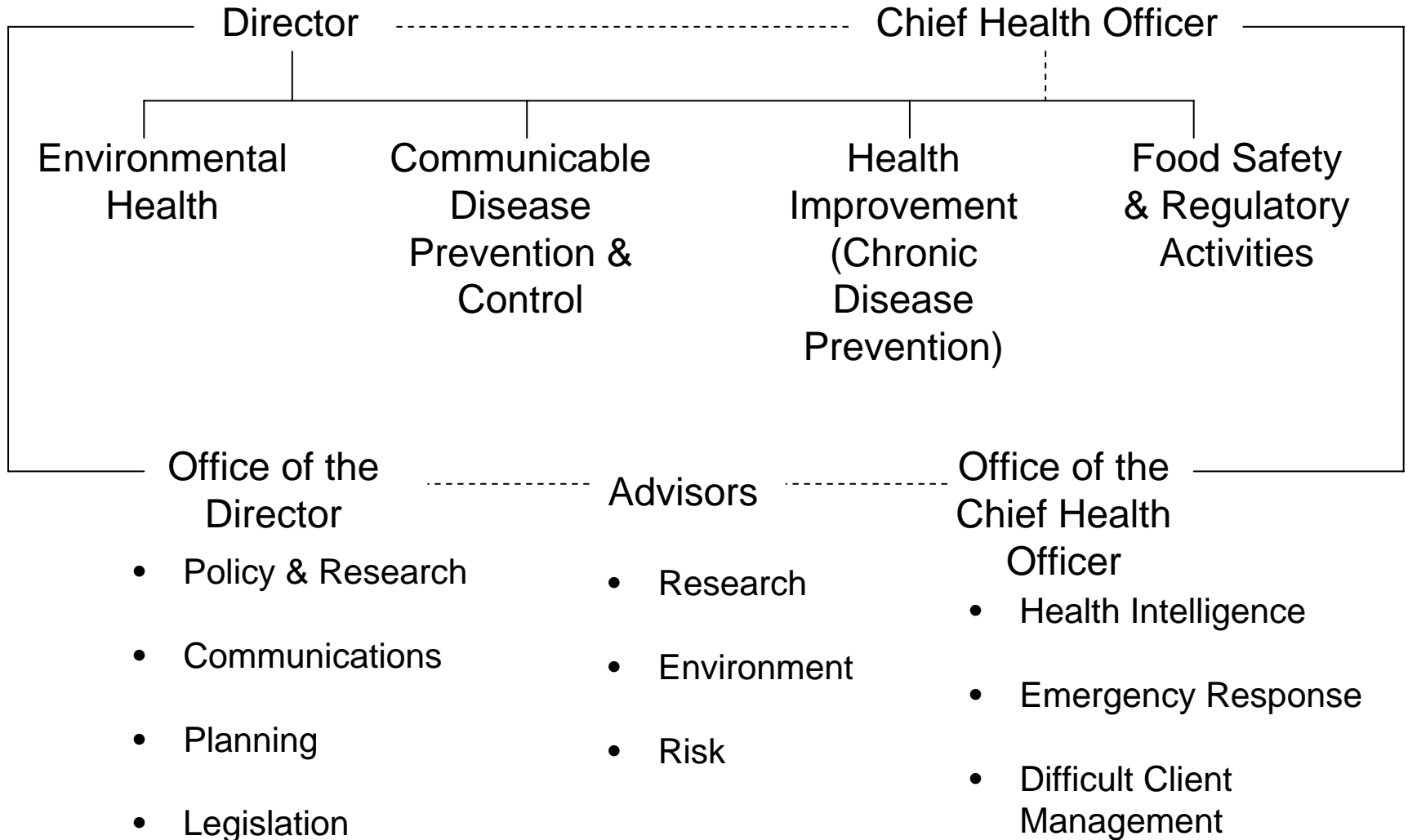
- Defining issues/problems
- Identifying and collecting evidence
- Developing hypotheses and theories
- Designing interventions
- Advocacy in whole-of-government context
- Gaining resources and undertaking program planning (in partnership with service providers)
- Evaluation

Examples: *Immunisation*
 Legionella
 Health Promotion

Public Health & Primary Healthcare



Public Health Branch



My Top 5

- **Building a primary prevention understanding in Victoria to achieve in chronic disease prevention and communicable disease control**
 - The research and evidence base
 - Communication strategies
 - Evaluation
- **Securing the relationships/partnerships needed to achieve Public Health outcomes**
 - DHS internal
 - Central agencies
 - Primary health sector
 - Local Government
- **Getting a regional Public Health capacity**
 - Workforce
 - Resources
- **Increasing the influence of Public Health in health planning eg using the evidence base of health intelligence for healthy public policy**
- **Getting health inequalities really understood as healthy public policy not a fad or targeted program idea**

Victorian Public Health Forum

Director

6 Convenors

6 Network Reps

2 Independents

**Evidence
&
Research
Network**

University
based

Researcher
convened

**Policy
Network**

Govt Dept
based

Policymaker
convened

**Local
Govt
Network**

Local Govt
based

Local Govt
convened

**Linkage
Network**

NGO/CHS
based

NGO
convened

**Regional
Network**

DHS
Regions
based

Regional
Director
convened

**Workforce
Network**

Workforce
& Training
focused

CHO
convened