

The 2007-2008 Victorian Public
Health Facilities External Cleaning
Audit

Published by the Victorian Government Department of Human Services
Melbourne, Victoria

© Copyright State of Victoria 2008

This publication is copyright, no part may be reproduced by any process
except in accordance with the provisions of the *Copyright Act 1968*.

This document may also be downloaded from the Department of Human
Services web site at:

www.dhs.vic.gov.au or

www.health.vic.gov.au

Authorised by the State Government of Victoria, 50 Lonsdale Street,
Melbourne.

Table of Contents

Introduction	4
Cleaning standards in Victorian health facilities	4
Internal and external cleaning audits	4
Categories used in reporting statewide external cleaning audit results	5
Health service categories	5
De-identifying data	5
Risk categories	5
Results of the 2007-2008 external cleaning audit	6
Results for health services across Victoria	6
Results for metropolitan health services	8
Results for rural health services	11
References	15
Appendix 1 Health service and risk categories	16
Table 1: Metropolitan Health Service Categories	16
Table 2a: Rural Health Service Categories	17
Table 2b: Small Rural Health Service (SRHS) Category	18
Appendix 2 Functional area risk categories	18
Table 3: Functional area risk categories	18

Introduction

Health care associated infection remains a major patient safety issue and a growing challenge for health care systems around the world. The World Health Organisation reports that between 5% and 10% of patients admitted to modern hospitals in the developed world acquire one or more infections (Allegranzi et al 2007). Whilst not all health care associated infection can be eliminated, we can minimise risks by ensuring that systems, such as environmental cleaning, are in place.

Cleaning standards in Victorian health facilities

Cleaning Standards for Victorian public hospitals (*The Cleaning Standards*) were originally prepared by the Melbourne Inner and Eastern Health Care Network and published in 2000. After an extensive review in 2003 *The Cleaning Standards (2005)* were released. *The Cleaning Standards* have been well received throughout Victoria and have been adopted by other states within Australia as well as by other countries including New Zealand and the United Kingdom.

In 2007 *The Cleaning Standards* underwent a further review by members of the Victorian Cleaning Standards User Group convening from across the state. The need for further clarification and standardisation in some areas was identified and some changes will accompany the updated *Cleaning Standards* due for release later this year. Public health services will be notified of any changes in writing prior to their implementation.

Further information about *The Cleaning Standards* can be found in the current edition at <http://www.health.vic.gov.au/ideas/infcon/cleaning> .

Internal and external cleaning audits

The Cleaning Standards can be applied to all Victorian health services and can be used to assist in developing and maintaining internal quality improvement processes. Acute public health services in Victoria are required to perform both internal and external cleaning audits.

Internal audits are usually undertaken by a suitable staff member on a regular basis, for example daily or weekly depending on the risk category of the area or department undergoing the audit.

External audits are performed by a person or persons not employed by the health service, i.e. from outside the health service. External audits are conducted at least once a year.

Acute public health services are required to submit the results of their internal and external cleaning audits and the results of external audits are reported on annually by the Department of Human Services.

Audit scores, for both internal and external audits, are based on a demerit system whereby a health facility begins with 100 points (100%) and points are deducted where cleaning requirements, as set out in *The Cleaning Standards*, are not met. A health facility either achieves or does not achieve the acceptable quality level (AQL) of 85%.

Categories used in reporting statewide external cleaning audit results

Two types of categories have been used in reporting the 2007-2008 external cleaning audit data: health service categories and risk categories.

Health service categories

For comparative purposes health services, hospitals and multi purpose services (MPS) have been grouped into categories that reflect their size and the complexity of their service provision. This enables those who submitted data for the 2007-2008 external cleaning audit to bench mark their own results against other similar health services. For example *GRAPH 1: 2007-2008 External Cleaning Audit Results by Health Service Category* (page 6 of this report) shows categories A1 through to SRHS (Small Rural Health Service). A list of health services in each of the health service categories can be found in Appendix 1.

De-identifying data

Data are de-identified for the purposes of public reporting. Individual health facilities within each category are given a coded letter from the alphabet. For example *GRAPH 4: 2007-2008 External Cleaning Audit Results for Metro Category A1 Health Services* (page 8 of this report) shows results for nine health facilities with coded letters A through to I. The number of SRHSs submitting data exceeded 26 (the available letters of the alphabet) and so double letters, i.e. AA, were added to the coding set. It was necessary to spread the results over two graphs for this category.

Risk categories

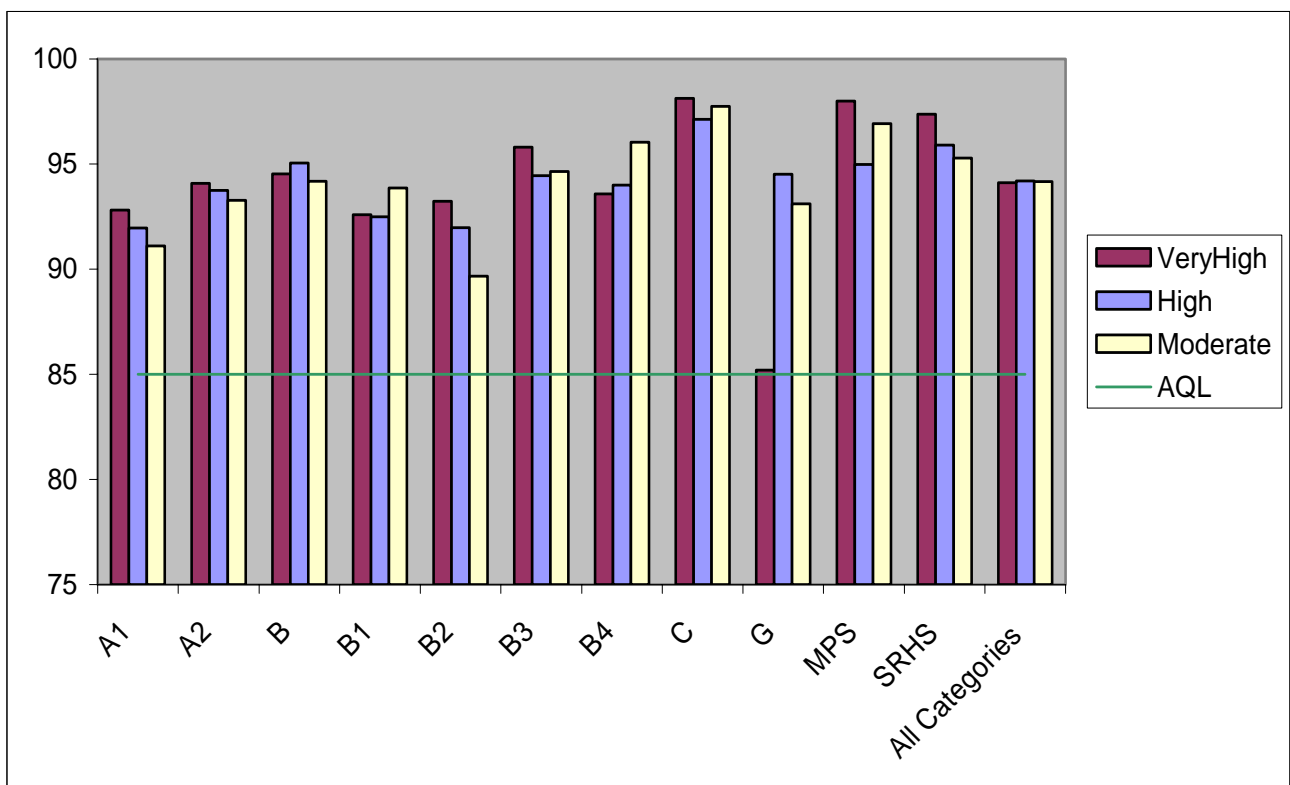
Results are also reported according to three risk categories: Very High, High and Moderate. These categories correspond with three of the four risk categories described in *The Cleaning Standards* and refer to the level of risk an area or department represents. For example an operating theatre falls under the Very High Risk category. Although cleaning in health facilities is important in all areas or categories, cleaning requirements and frequency reflect the level of risk associated with each category. For example cleaning requirements and the frequency of cleaning are much higher for an operating theatre than for an office in a hospital administration area. Risk categories are more fully described in *The Cleaning Standards*. A list of all areas or departments in each of the three reportable risk categories can be found in Appendix 2.

Results of the 2007-2008 external cleaning audit

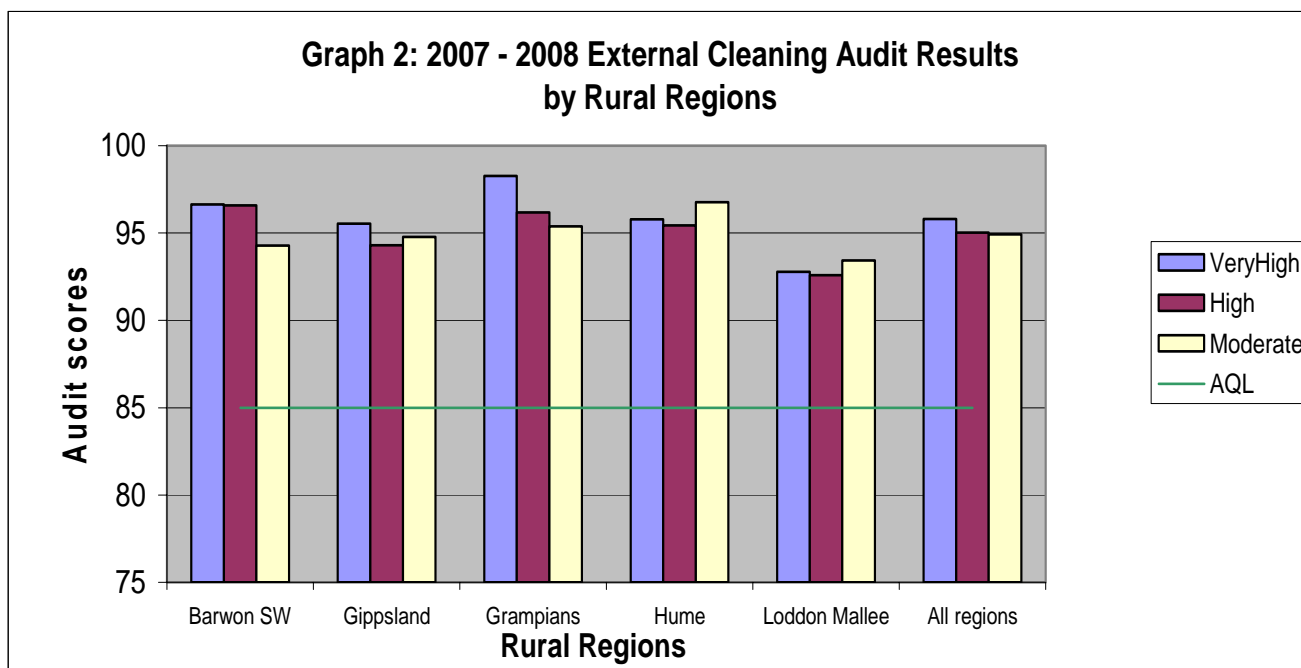
In April 2008 Victorian public health services reported on external cleaning audit results for the previous 12 month period. All reporting facilities achieved the AQL. In the following graphs the Very High risk category results are shown in blue, the High risk category results are shown in red and the Moderate risk category results are shown in yellow. Not all health services were required to reported on all three risk categories.

Results for health services across Victoria

Graph 1 shows results for health services by category across all of Victoria. MPS is the abbreviation for multi purpose service and SRHS is the abbreviation for small rural health service.

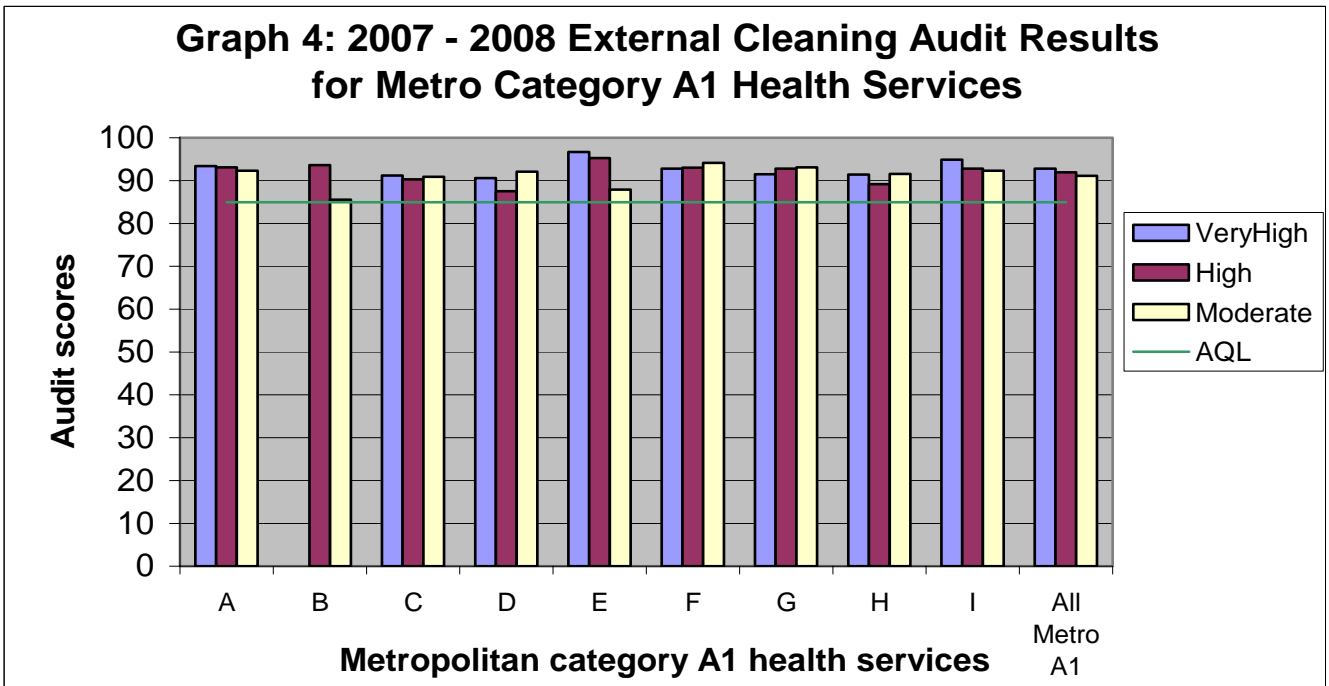
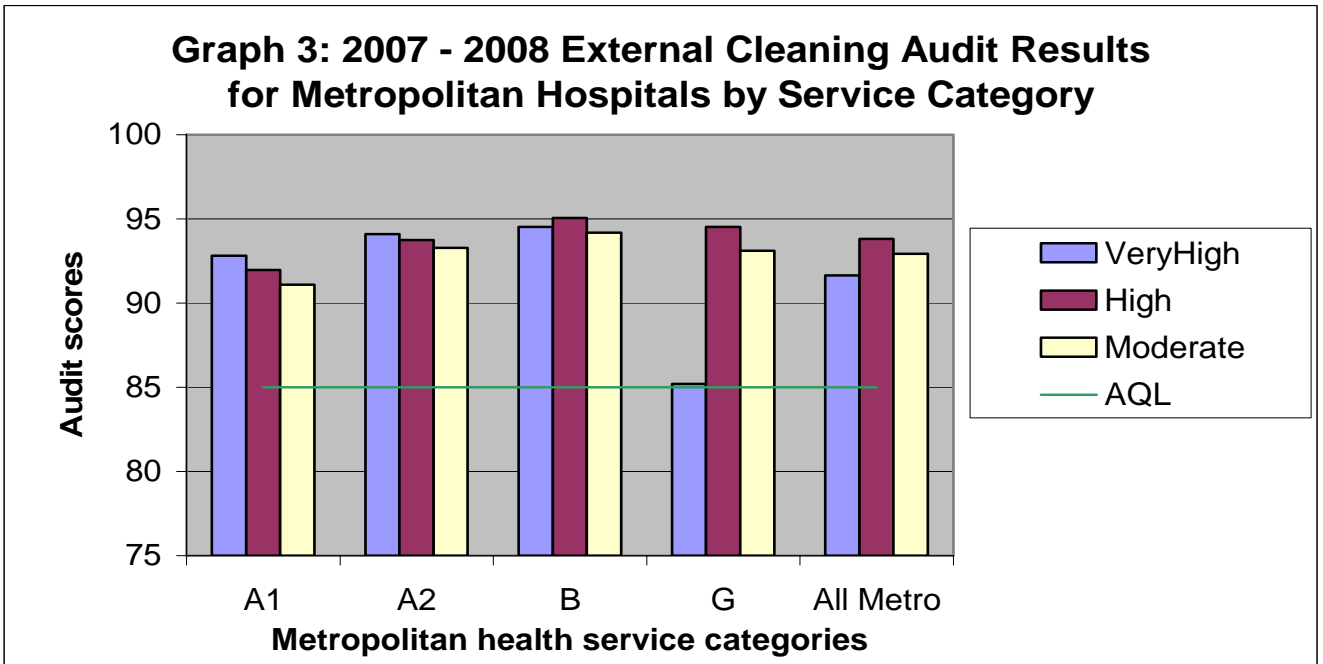


Graph 2 shows results for rural regions across Victoria.

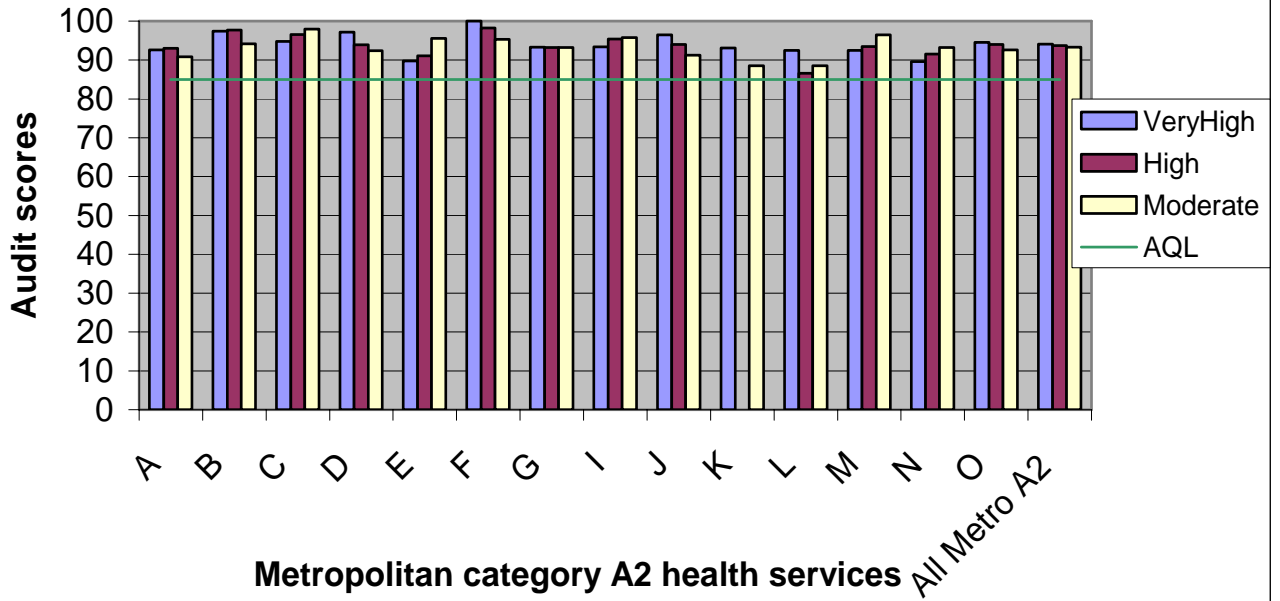


Results for metropolitan health services

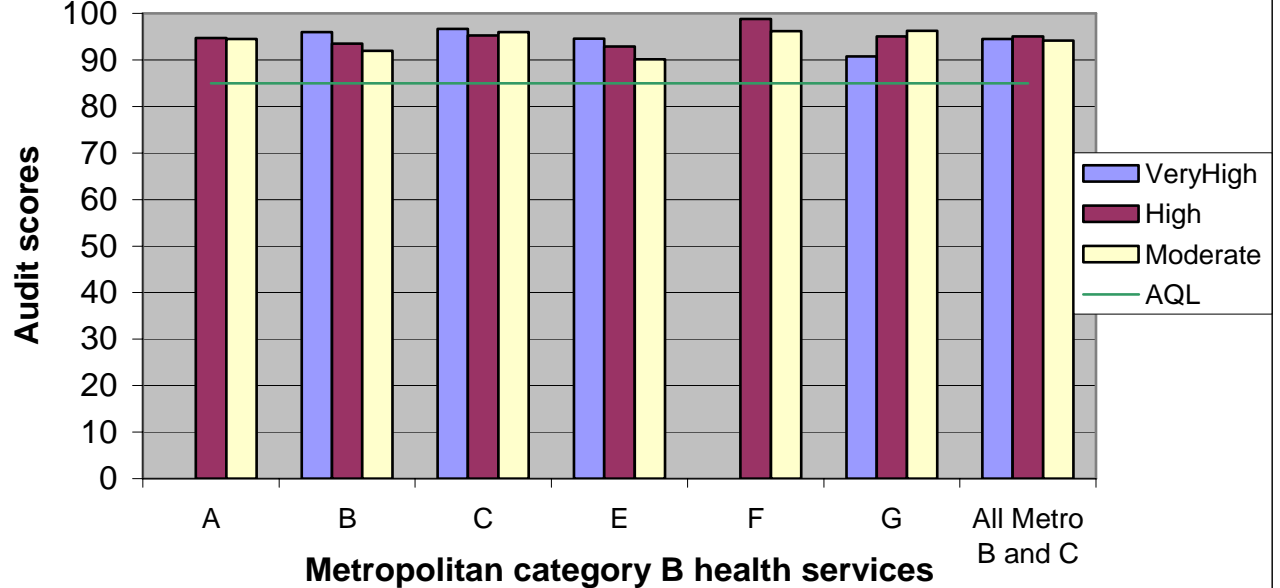
Graph 3 through to Graph 7 show results for metropolitan health services.



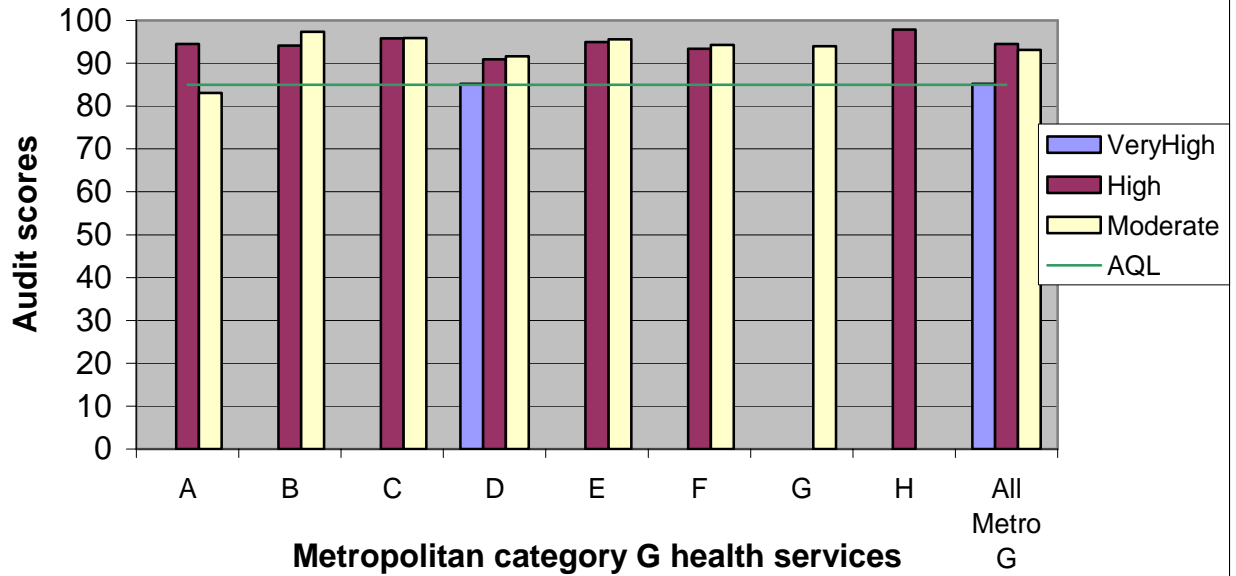
Graph 5: 2007 - 2008 External Cleaning Audit Results for Metro Category A2 Health Services



Graph 6: 2007 - 2008 External Cleaning Audit Results for Metro Category B Health Services

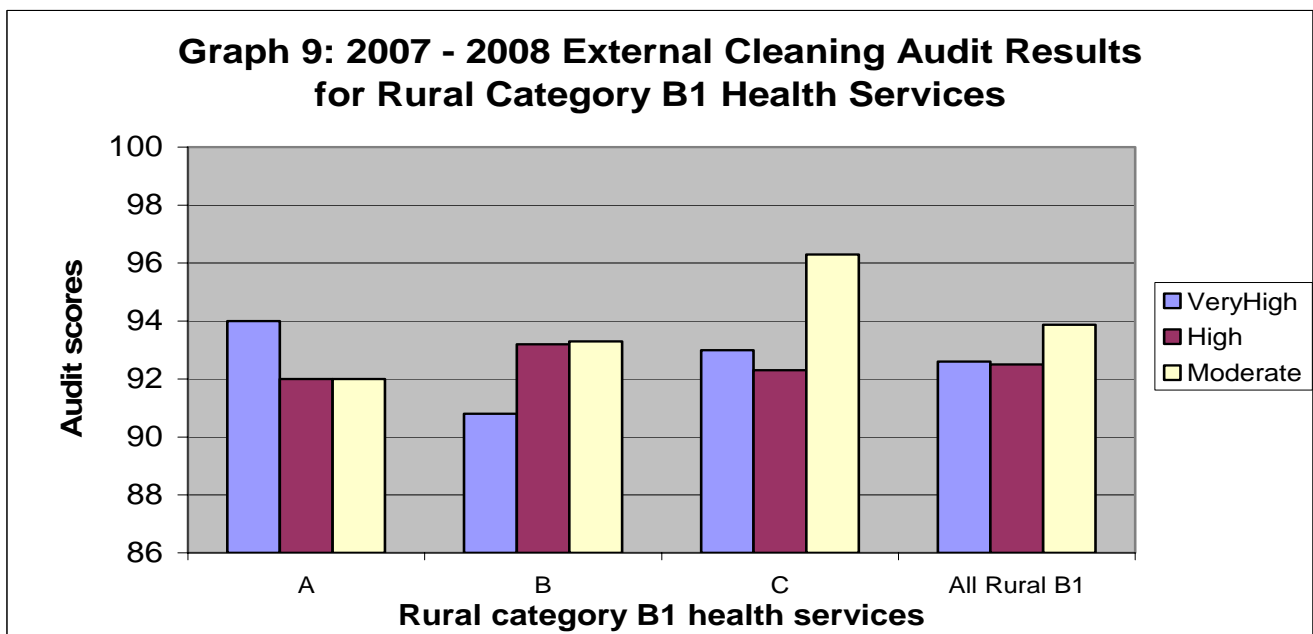
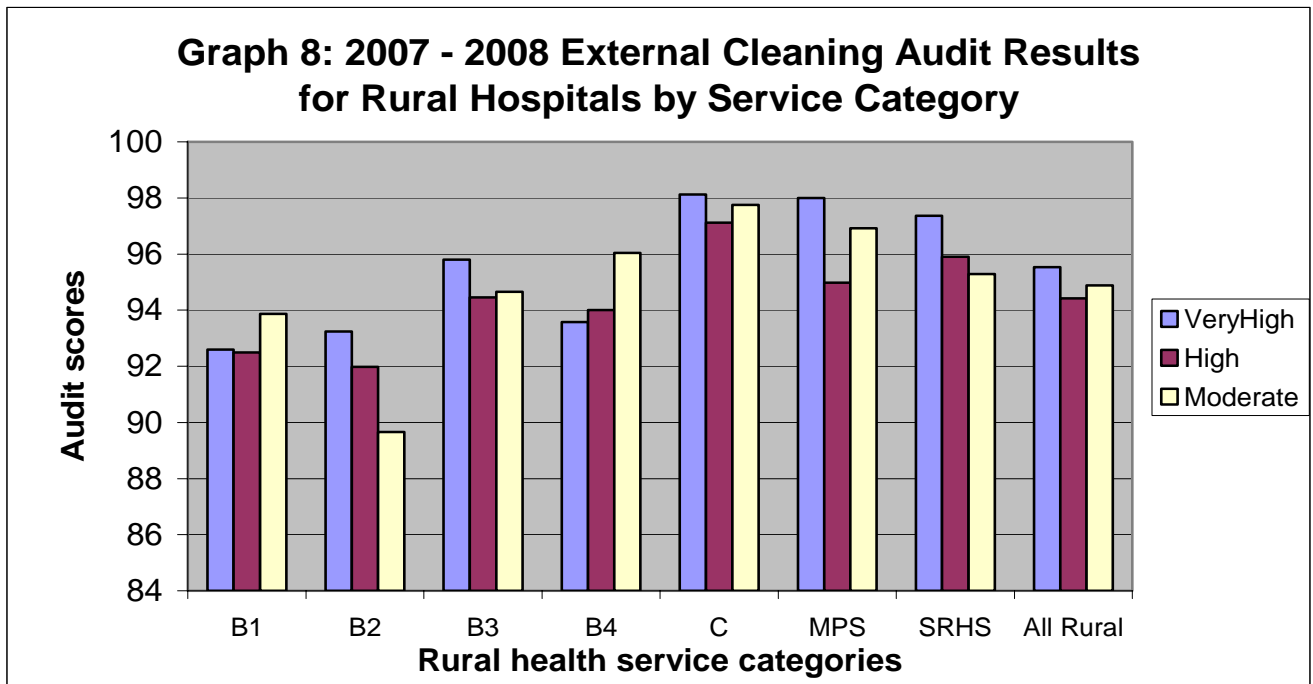


Graph 7: 2007 - 2008 External Cleaning Audit Results for Metro Category G Health Services

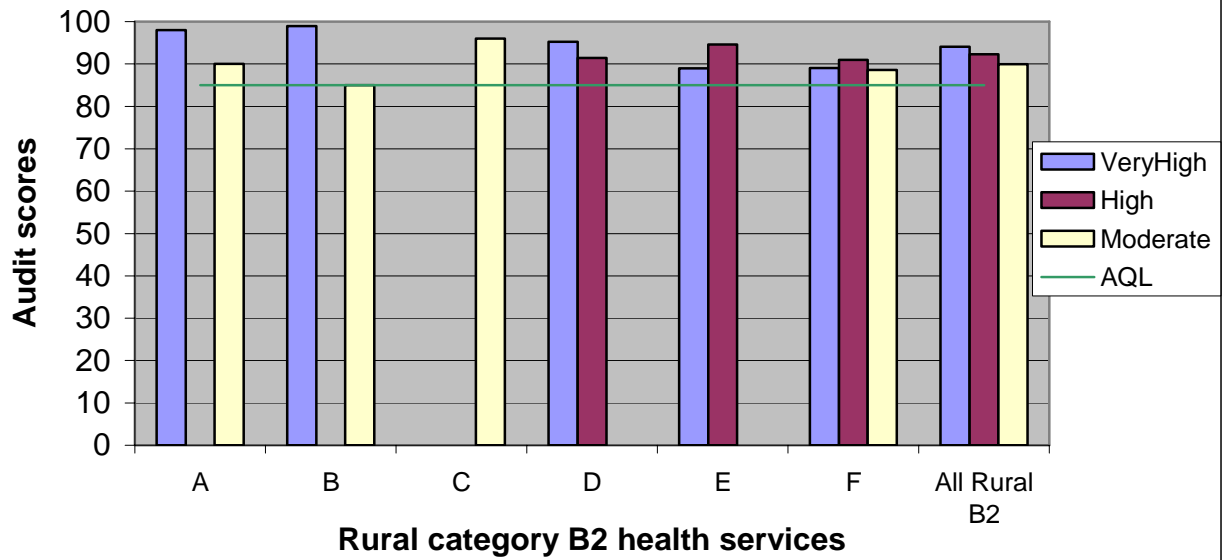


Results for rural health services

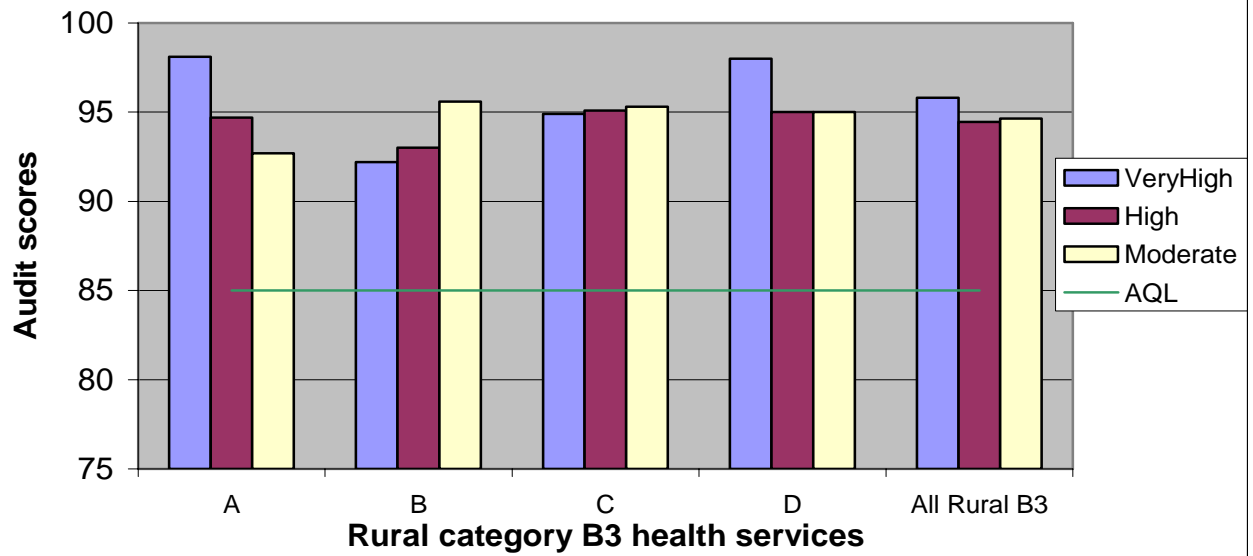
Graph 8 through to Graph 14b show results for rural health services.



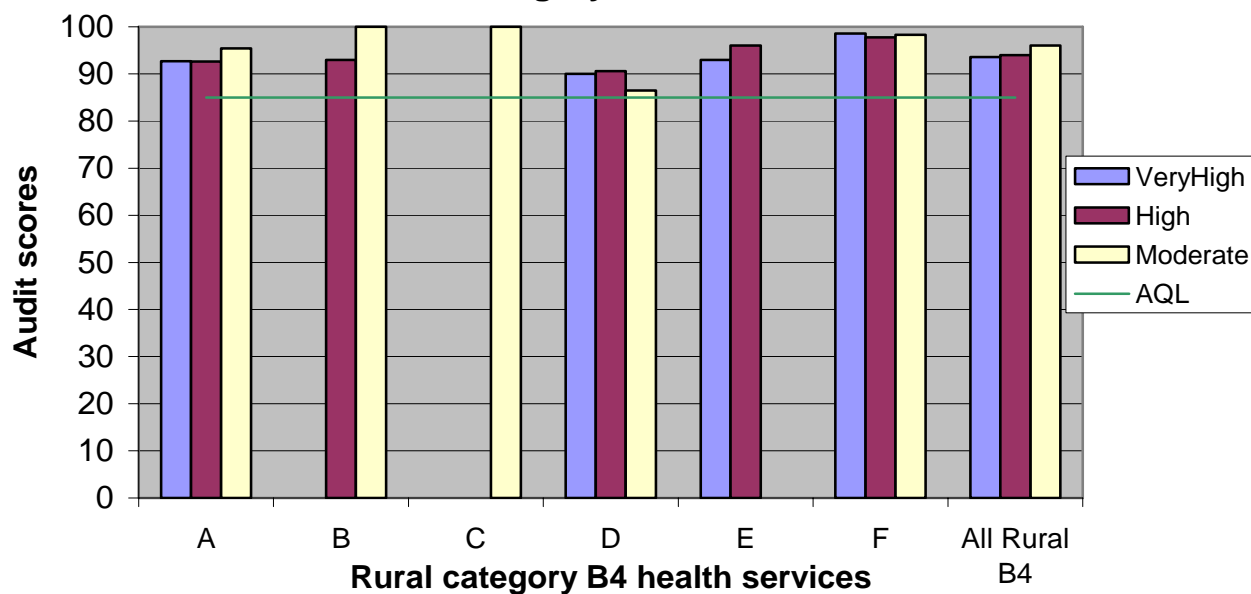
Graph 10: 2007 - 2008 External Cleaning Audit Results for Rural Category B2 Health Services



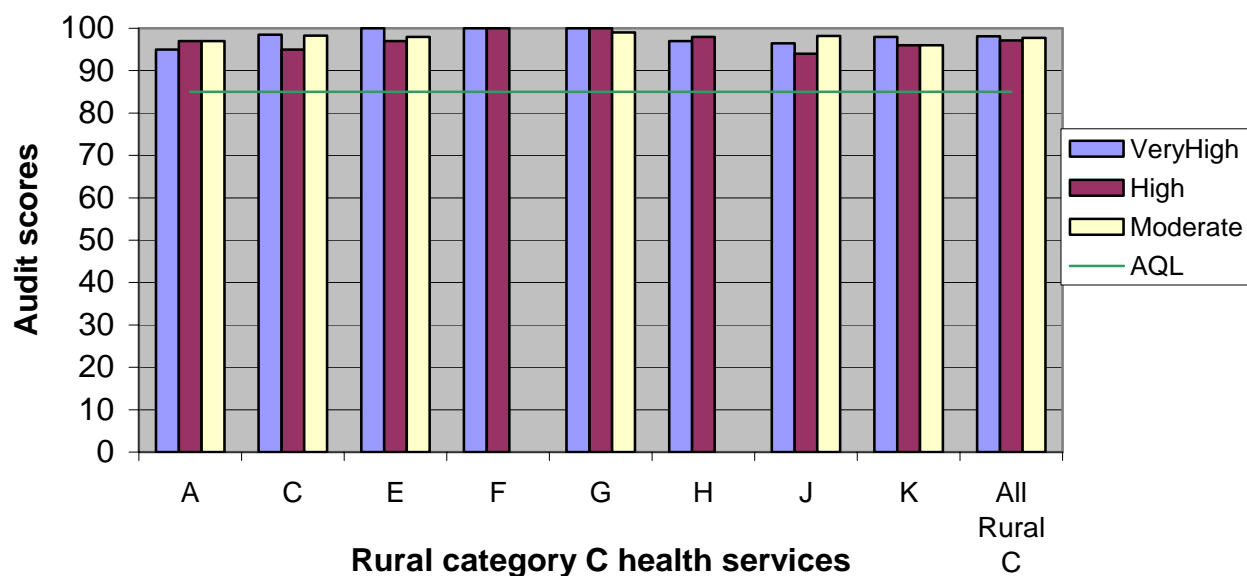
Graph 11: 2007 - 2008 External Cleaning Audit Results for Rural Category B3 Health Services



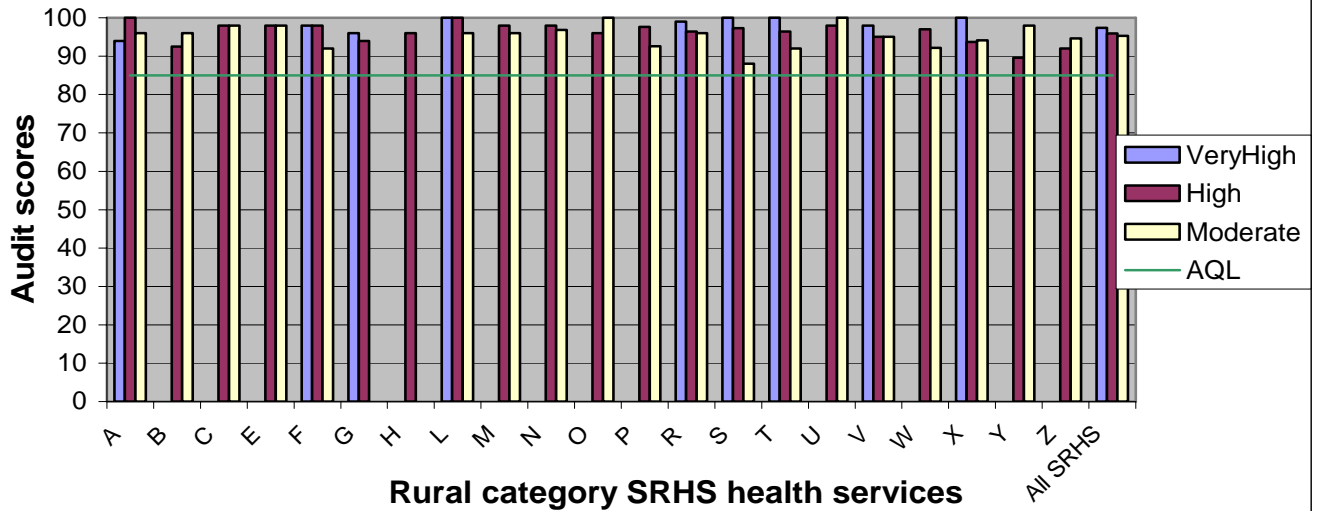
Graph 12: 2007 - 2008 External Cleaning Audit Results for Rural Category B4 Health Services



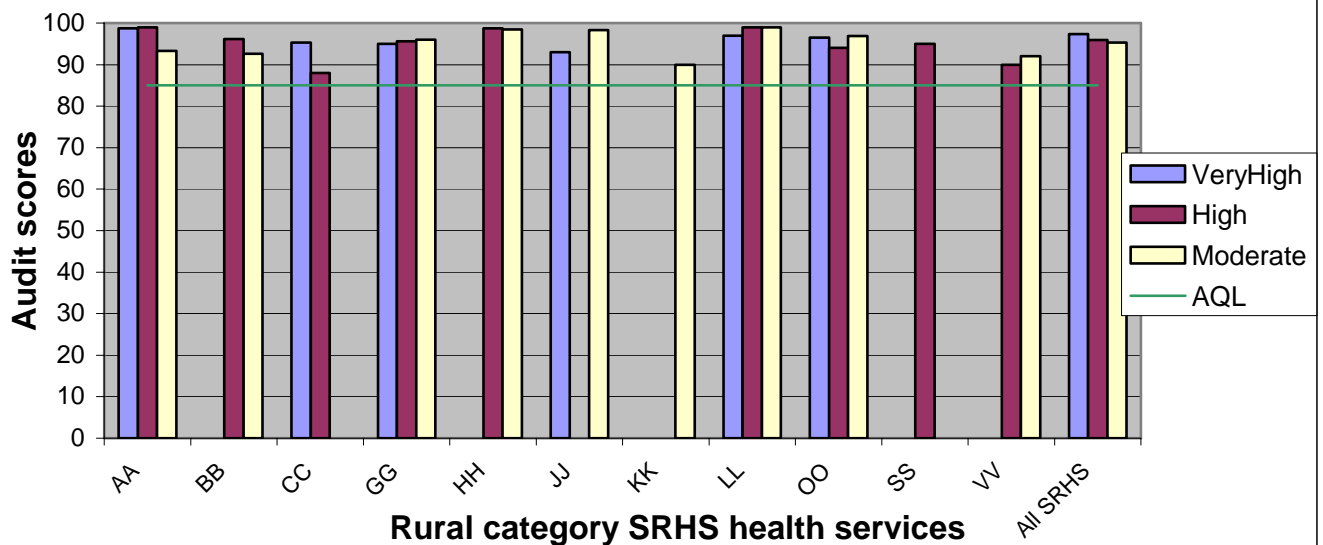
Graph 13: 2007 - 2008 External Cleaning Audit Results for Rural Category C Health Services



Graph 14: 2007 - 2008 External Cleaning Audit Results for Rural Category SRHS Health Services



Graph 14b: 2007 - 2008 External Cleaning Audit Results for Rural Category SRHS Health Services (cont.)



References

Allegranzi,B, Storr,J, Dziekan,G, Leotsakos,A, Donaldson,L, & Pittet,D (2007) The First Global Patient Safety Challenge "Clean Care is Safer Care": from launch to current progress and achievements. *Journal of Hospital Infection* 65(S2) pp 115-123

The Victorian Government Department of Human Services (2005) Cleaning standards for Victorian public hospitals 2000, revised February 2005. Melbourne. State Government of Victoria.

Appendix 1 Health service and risk categories

Table 1: Metropolitan Health Service Categories

Health Service Category	Health Service	Facility
Metro A1	Austin Health	Austin medical centre
	Austin Health	Austin Repatriation Medical centre
	Bayside Health	The Alfred
	Melbourne Health	The Royal Melbourne hospital
	Royal Children's Hospital	Royal Children's Hospital
	Southern Health	Casey Hospital
	Sothern Health	Monash Medical Centre: Clayton
	Southern Health	Monash Medical Centre: Moorabin
	St Vincent's Health	St Vincent's Hospital (Melbourne)
Metro A2	Eastern Health	Box Hill Hospital
	Mercy Hospital for Women	Mercy Hospital for Women
	Mercy Werribee Hospital	Mercy Werribee Hospital
	Northern Health	The Northern Hospital
	Peninsula Health	Frankston Hospital
	Peninsula Health	Rosebud Hospital
	Peter MacCallum	Peter MacCallum Canter Institute
	Royal Dental Hospital	Royal Dental Hospital
	Royal Victorian Eye & Ear Hospital, The	Royal Victorian Eye & Ear Hospital, The
	Royal Women's Hospital	Royal Women's Hospital
	Southern Health	Cranbourne Integrated Care Centre
	Southern Health	Dandenong Hospital
	Western Health	Sunshine Hospital
	Western Health	Western Hospital
Barwon SW	Barwon Health	
Metro B	Bayside Health	Caulfield general Medical Centre
	Bayside Health	Sandringham & district Memorial Hospital
	Eastern Health	Angliss Hospital
	Eastern health	Healesville & District Hospital
	Eastern health	Maroondah Hospital
	St Vincent's Health	St George's Health Service
	Western Health	Williamstown Hospital
Metro G	Austin Health	Royal Talbot rehabilitation Centre
	Eastern Health	Peter James Centre, The (Burwood)
	Melbourne Health	Royal Park City Campus
	Northern Health	Broadmeadows Health Services
	Northern Health	Bundoora Extended Care Centre
	Peninsula Health	Mount Eliza Rehabilitation, Aged and Palliative Care
	Southern Health	Kingston Centre
	St Vincent's Health	Caritas Christi Hospice Ltd

Table 2a: Rural Health Service Categories

Health Service Category	Health Service Region	Facility or Health Service
Rural B1	Gippsland	Latrobe Regional Hospital
	Grampians	Ballarat Health Service
	Loddon Mallee	Bendigo Health Care Group
Rural B2	Barwon SW	South West Healthcare
	Barwon SW	Barwon South West Healthcare: Camperdown
	Hume	Goulburn Valley Health: Rushworth
	Hume	Northeast Health Wangaratta
	Hume	Wodonga Regional Health Service
	Loddon Mallee	Mildura Base Hospital
Rural B3	Gippsland	Bairnsdale Regional Health Service
	Gippsland	Central Gippsland health Service
	Gippsland	West Gippsland Healthcare Group
	Hume	Goulburn Valley Health: Shepparton
Rural B4	Grampians	Wimmera Health Care Group: Horsham
	Grampians	Wimmera Health Care Group: Dimboola
	Hume	Goulburn Valley Health: Tatura
	Loddon Mallee	Echuca Regional Health
	Loddon Mallee	Swan Hill District Hospital
	Barwon SW	Western District Health Service
Rural C	Barwon SW	Colac Area Health
	Barwon SW	Portland & District Hospital
	Gippsland	Bass Coast Regional Health
	Gippsland	Gippsland Southern Health Service
	Grampians	Djerriwarrh Health Service
	Grampians	East Grampians Health Service
	Grampians	Stawell Regional Health
	Hume	Benalla & District Memorial Hospital
	Loddon Mallee	Kyabram & District Health Service
	Loddon Mallee	Maryborough District Health Service
	Loddon Mallee	Mt Alexander Hospital
Rural MPS	Barwon SW	Otway Health & Community Services
	Barwon SW	Timboon & District Health Care Service
	Gippsland	Orbost Regional Health
	Hume	A19Alpine Health: Bright
	Hume	Alpine: Mt Beauty
	Hume	Alpine Health: Myrtleford
	Hume	Upper Murray Health & Community Services
	Loddon Mallee	Mallee Track Health & Community Services
	Loddon Mallee	Robinvale District Health Services

Table 2b: Small Rural Health Service (SRHS) Category

SRHS: Health Service Region	Facility or Health Service
Barwon SW	Casterton Memorial Hospital
	Coleraine District Health Service
	Hesse Rural Health Service
	Heywood Rural Health
	Lorne Community Hospital
	Moyne Health Service
	Terang & Mortlake Health Service
Gippsland	Kooweerup Regional Health Service
	Omeo District Hospital
	South Gippsland Hospital
	Yarram & District Health Service
Grampians	Beaufort & Skipton Health Service
	Dunmunkle Health Service
	East Wimmera Health Service: Bichip
	East Wimmera Health Service: Charlton
	East Wimmera Health Service: Donald
	East Wimmera Health Service: St Arnaud
	East Wimmera Health Service: Wycheproof
	Edenhope & District Hospital
	Hepburn Health Service: Creswick
	Hepburn Health Service: Daylesford
	Rural Northwest Health: Hopetoun
	Rural Northwest Health: Warracknabeal
	West Wimmera Health Service: Jeparit
	West Wimmera Health Service: Kaniva
West Wimmera Health Service: Nhill	
West Wimmera Health Service: Rainbow	
Hume	Alexandra District Hospital
	Beechworth Health Service
	Cobram District Hospital
	Kilmore & District Hospital
	Mansfield District hospital
	Nathalia District Hospital
	Numurkah District Health Service
	Seymour District Memorial Hospital
	Tallangatta Health Service
	Yarrowonga District Health Service
	Yea & District Memorial Hospital
Loddon Mallee	Boort District Hospital
	Cohuna District Hospital
	Inglewood & District Health Service
	Kerang District Health
	Kyneton District Health Service
	Maldon Hospital
	Manangatang & District Hospital
	Mclvor Health & n Community Services
	Rochester & Elmore District Health Service

Appendix 2: Risk categories

Table 3: Functional area risk categories

Very High	High	Moderate
Operating theatres Invasive procedure area Intensive care unit Level 1 & level 2 nursery Special needs patient or area Central sterile supply unit	Sterile stock storage Emergency department Pharmacy clean area General wards: This includes Level 1 nursery and CCU, oncology And dialysis units, delivery and birthing suites, and Non invasive treatment and procedure rooms	Day activity area Rehabilitation area Residential accommodation Pathology General pharmacy Kitchenette/pantry Laboratories Mortuary Medical imaging: non invasive Outpatient clinic Cleaning equipment room Waiting room Cafeteria Public area